

Oakland General Plan Update 2045 Town Hall #2

Safe, Equitable
Neighborhoods



OAKLAND 2045
GENERAL PLAN

April 7, 2022



Welcome!

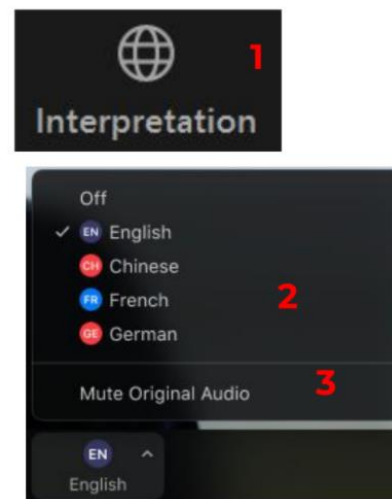
INTERPRETATION

1. In your meeting/webinar controls, click Interpretation.
2. Select the language that you would like to hear: English.

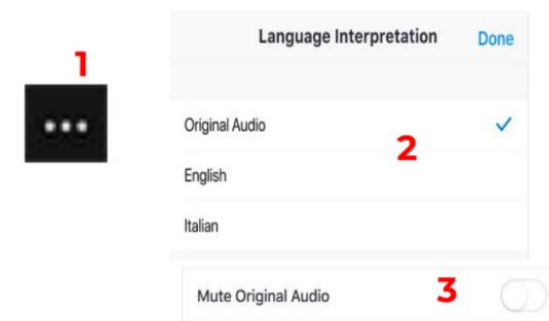
1. En los controles de la reunión o el seminario web, haga clic en Interpretación.
2. Haga clic en el idioma que desee escuchar: español (Spanish).
3. (Opcional) Para escuchar solo el idioma interpretado, haga clic en Silenciar audio original.

1. 在會議/網路研討會控制項中,按一下口譯。
2. 按一下您想要聽的語言:中文 (Chinese)。
3. (非必要步驟) 若只想聽口譯內容, 請按一下關閉原始音頻。

Windows | macOS

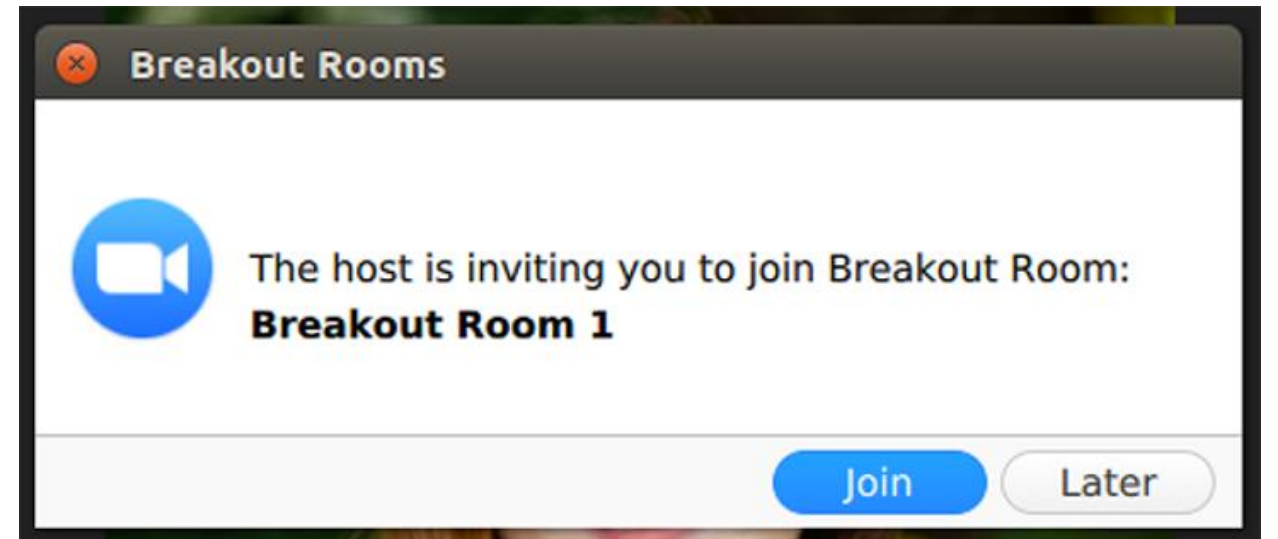
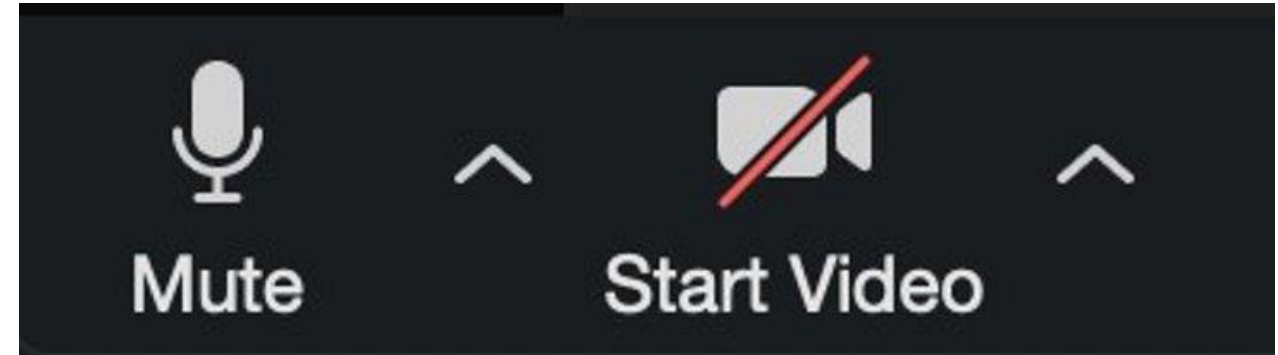


Android | iOS



ZOOM PROTOCOL

1. Please be respectful. There will be zero tolerance for inappropriate behavior or language
 2. Please mute yourself if you are not actively speaking
 3. Discussion will be in breakout rooms. Look for the invite to move to your room. If there are any problems, you can “Ask For Help” by clicking on the button at the bottom of your screen
- La traducción en español está disponible en una sala de grupos. Por favor “levante la mano” (marque *9 por teléfono.)
 - 翻译将在分组讨论室进行。如果需要翻译，请举手。如果您正在使用电话，请按 *9



If on phone:
*6 to unmute
*9 to raise hand

Agenda

- Welcome!
- General Plan Update Overview
- Equity and Environmental Justice
- Safety from Hazards
- Discussion
- Next steps



General Plan Background

What is a General Plan?



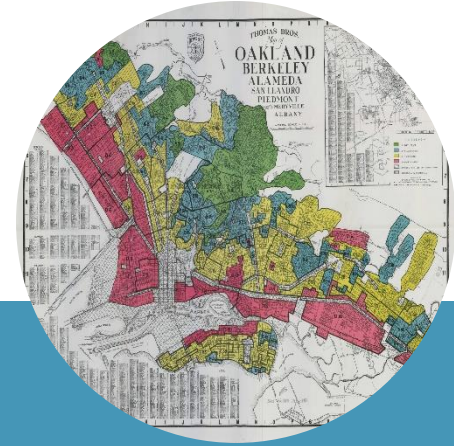
"Constitution" for development and conservation.

Establishes citywide vision and supporting goals, policies, and implementation measures.



Opportunity to look back to identify past challenges and accomplishments.

Provides consistent direction for future development.



Opportunity to Reduce Racial Inequities & Promote Inclusive Engagement

Engage our community in the planning and decision-making process.

Elements required to be updated by early 2023



HOUSING
Adopted 2014



SAFETY
Adopted 2004
(Last amended 2021)



**ENVIRONMENTAL
JUSTICE**
New Requirement
May be stand-alone
or integrated



**INDUSTRIAL
LANDS POLICY**
New

Elements required to be updated by early 2023



Housing

- Addresses Oaklander's **housing needs, at all income levels** (2023-2031)
 - Housing Production
 - Tenant Protections
 - Affordable housing preservation
- Where housing should go



Safety

- Identifies **natural and human-made hazards** (wildfire, earthquake, climate change, flooding, evacuation, hazardous materials) and **ways to reduce impacts**

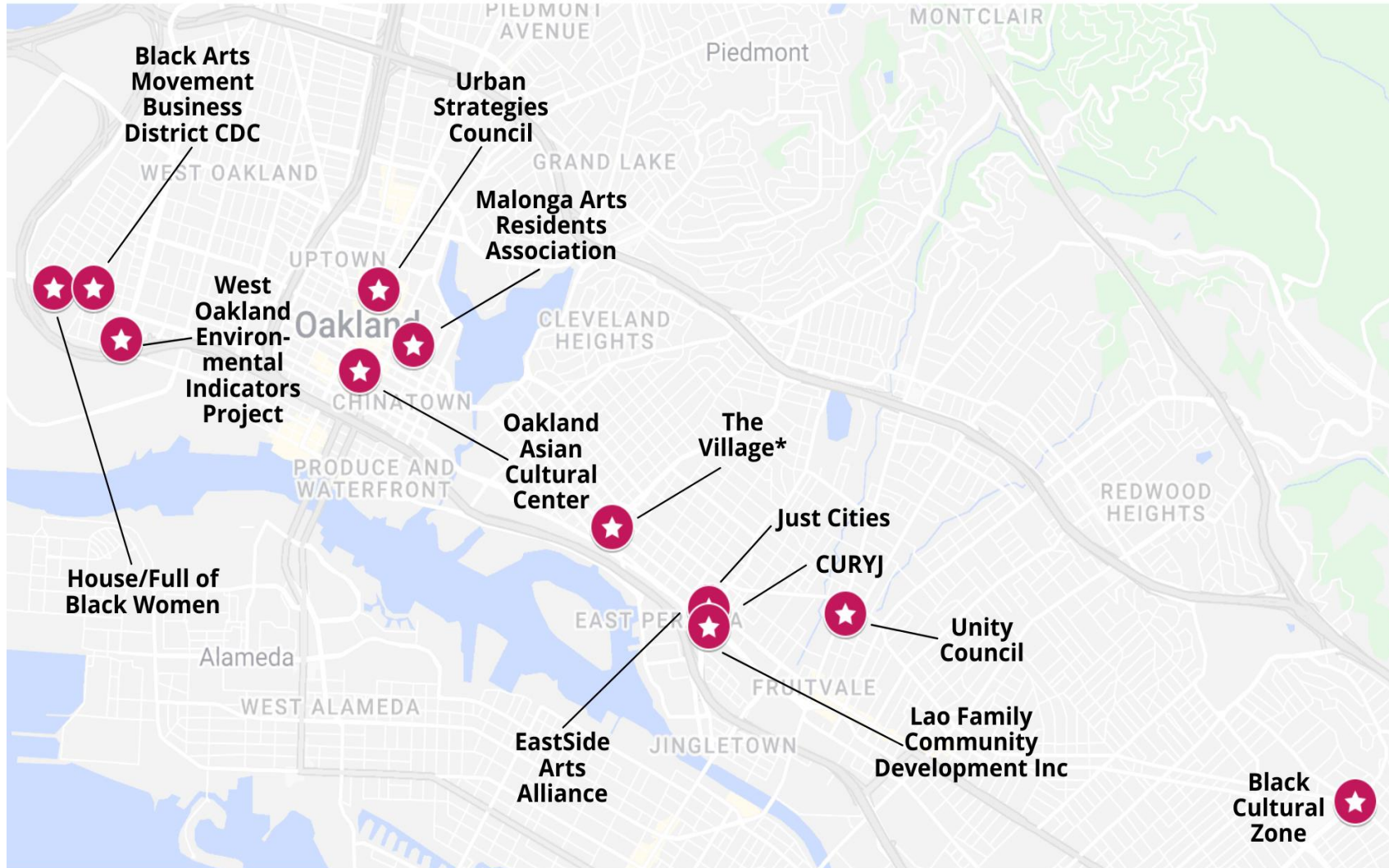


Environmental Justice

- Addresses needs of **most impacted and vulnerable** communities
- Includes air quality and pollution; safe and sanitary housing; healthy food access; physical activity; investment prioritization; civic engagement

These issues overlap!

Community Engagement



Community engagement for Oakland's most impacted residents

- Working class communities
- Communities of color
- Unhoused
- Formerly incarcerated
- Youth
- Communities experiencing environmental injustices

*The Village operates as a network of encampments across Oakland without one address.

Community Engagement Events



A. "Karriem" Khan, @ak2webd3, and Jessica Lee, @jessicazylee, discuss their vision for Oakland's future @oaklandasiancc.

Pop-up and Community Hub Events

- Fruitvale, Chinatown Eastmont, San Antonio, Hoover Elementary
- Lunar New Year, Black Joy Parade
- Over 900 people reached in-person

Neighborhood and Townhall Workshops

- 3 Housing Element Focused Workshops
- >200 participants

Discussion Groups Decisionmaker Meetings Online Engagement

Upcoming Opportunities

- **Housing and Environmental Justice Grounding Workshop (Apr 8&9, 9am-10:30am)**
 - **How can we focus more on equity across all issues?**
 - Community Education Workshops
 - Hear from community leaders
- **Neighborhood Workshops, Discussion Groups, Pop-Ups, Community Events**
 - **What are my top priorities and ideas for my neighborhood? Where can I talk even more in-depth about the issues I care about?**



Equity and Environmental Justice

What is equity?

- In Oakland, equity means **all people have full and equal access to opportunities that enable them to attain their full potential**. It means that identity—such as race, ethnicity, gender, age, disability, sexual orientation or expression—has no detrimental effect on the distribution of resources, opportunities, and outcomes for Oakland’s residents.
- Equity differs from equality, which focuses on giving everyone the same thing, regardless of outcomes.

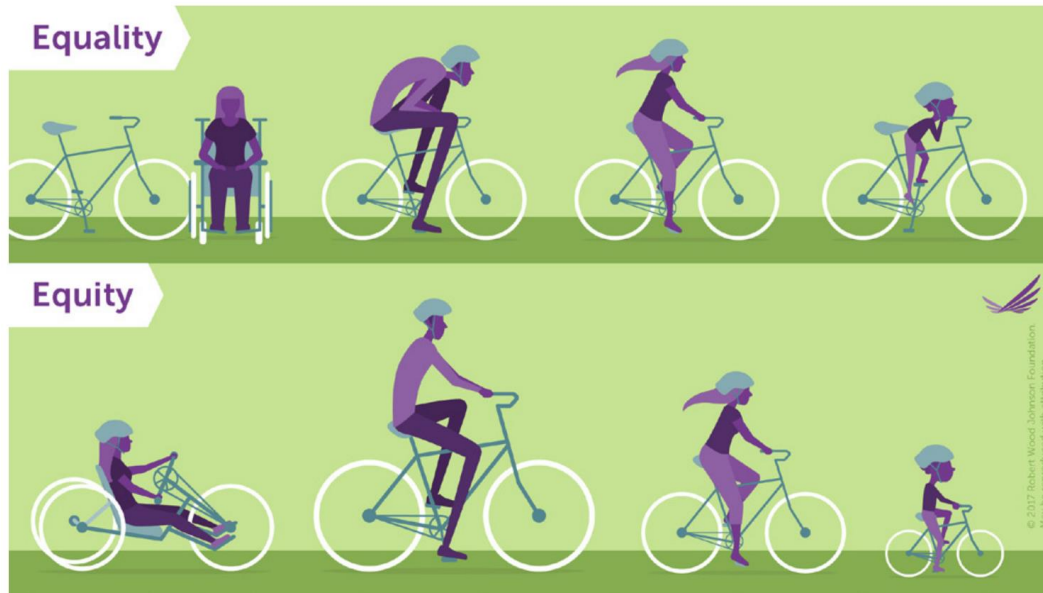


Image source: Robert Wood Johnson Foundation, 2017 [via Oakland 2030 ECAP]

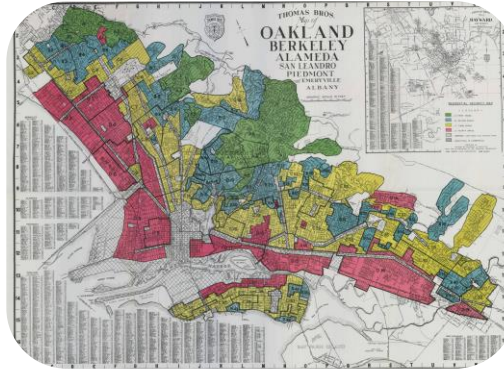
“...the City of Oakland will intentionally integrate, on a Citywide basis, the principle of '**fair and just**' in all the City does in order to achieve equitable opportunities for all people and communities.”

Oakland Municipal Code 2.29.170.1

Addressing an inequitable past



Colonization



Discriminatory policies- redlining, zoning, covenants



Urban renewal

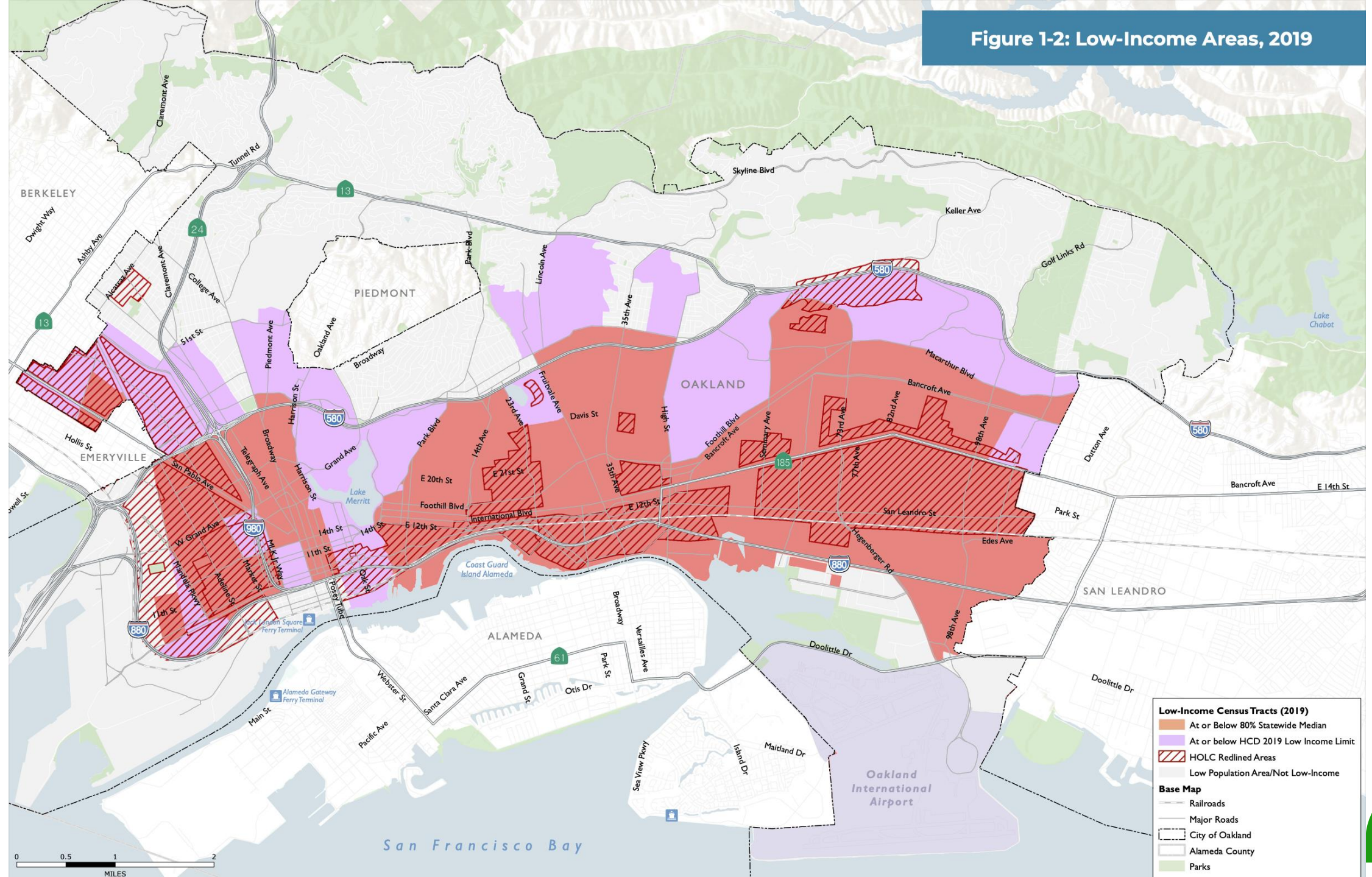


Disinvestment

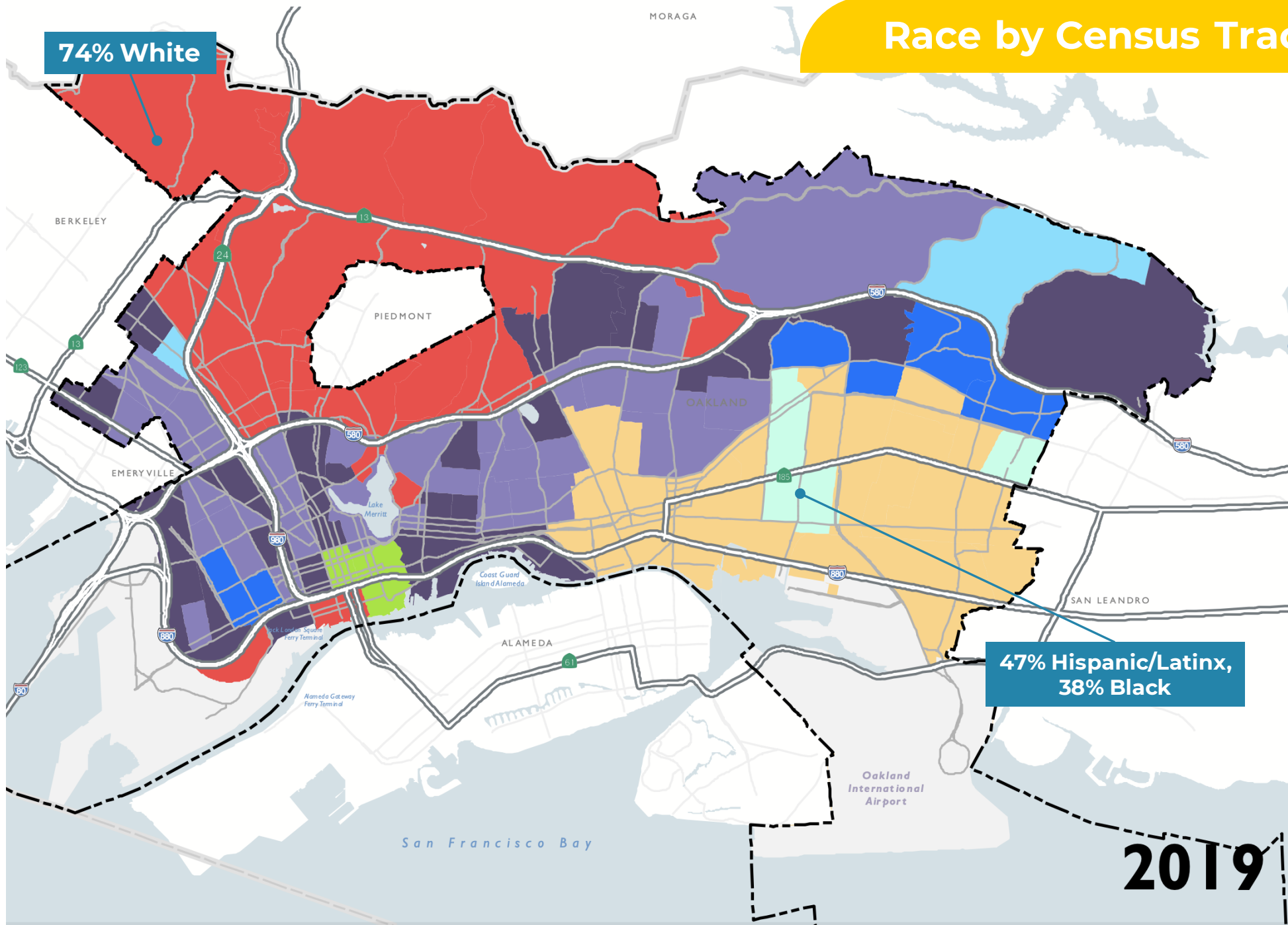


Predatory lending/ foreclosure crisis

Figure 1-2: Low-Income Areas, 2019



Race by Census Tract Majority

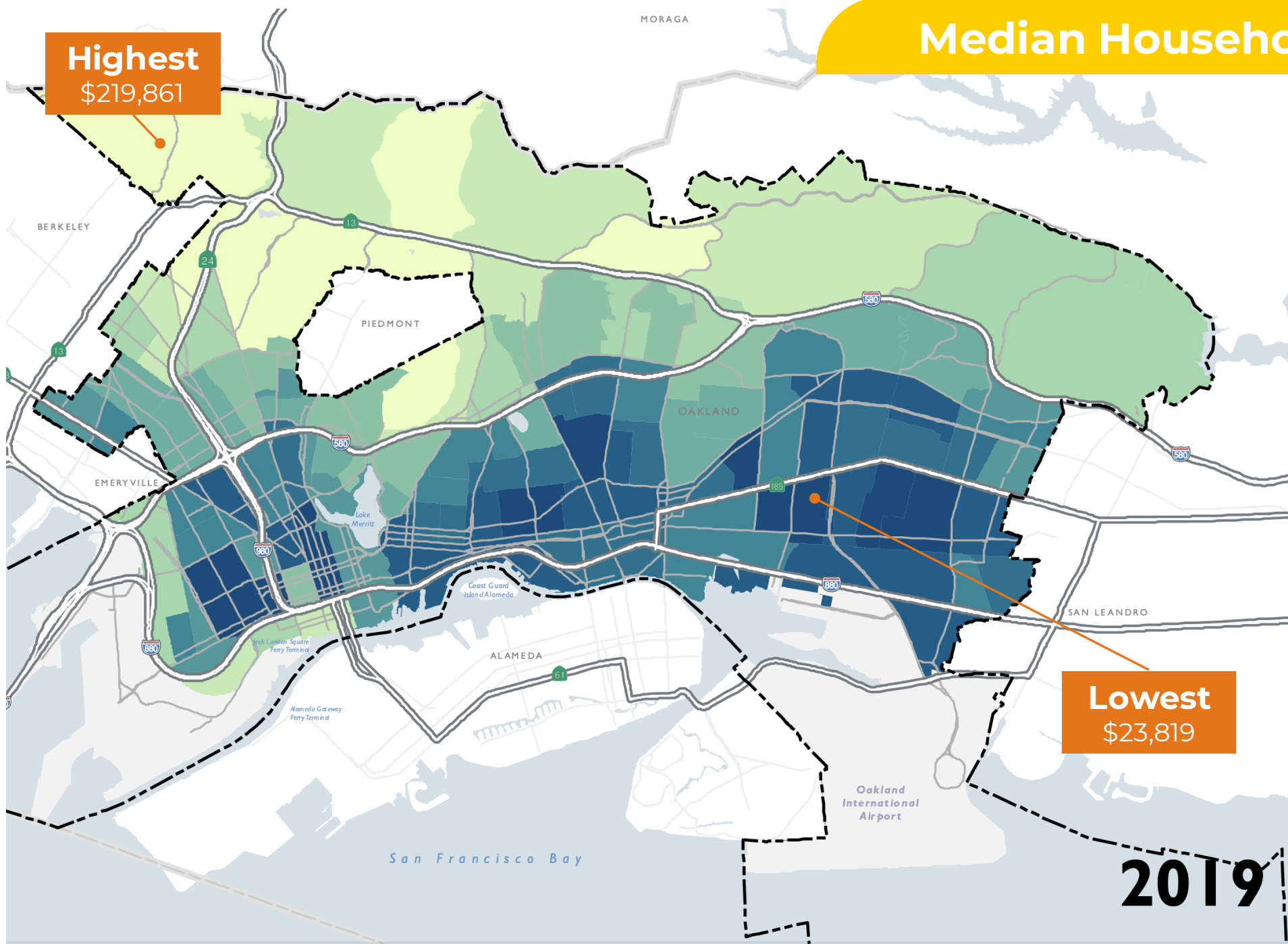


Racial Plurality

- Majority White
- Majority Hispanic/Latinx
- Majority Black
- Black & White
- Black & Hispanic/Latinx
- Asian/Pacific Islander & Black
- Majority Asian*
- Asian & Hispanic/Latinx
- 3 Group Mixed
- Mixed (Diverse)
- No Data/Low Pop. Area

*Includes Pacific Islander 1980-90.

Median Household Income

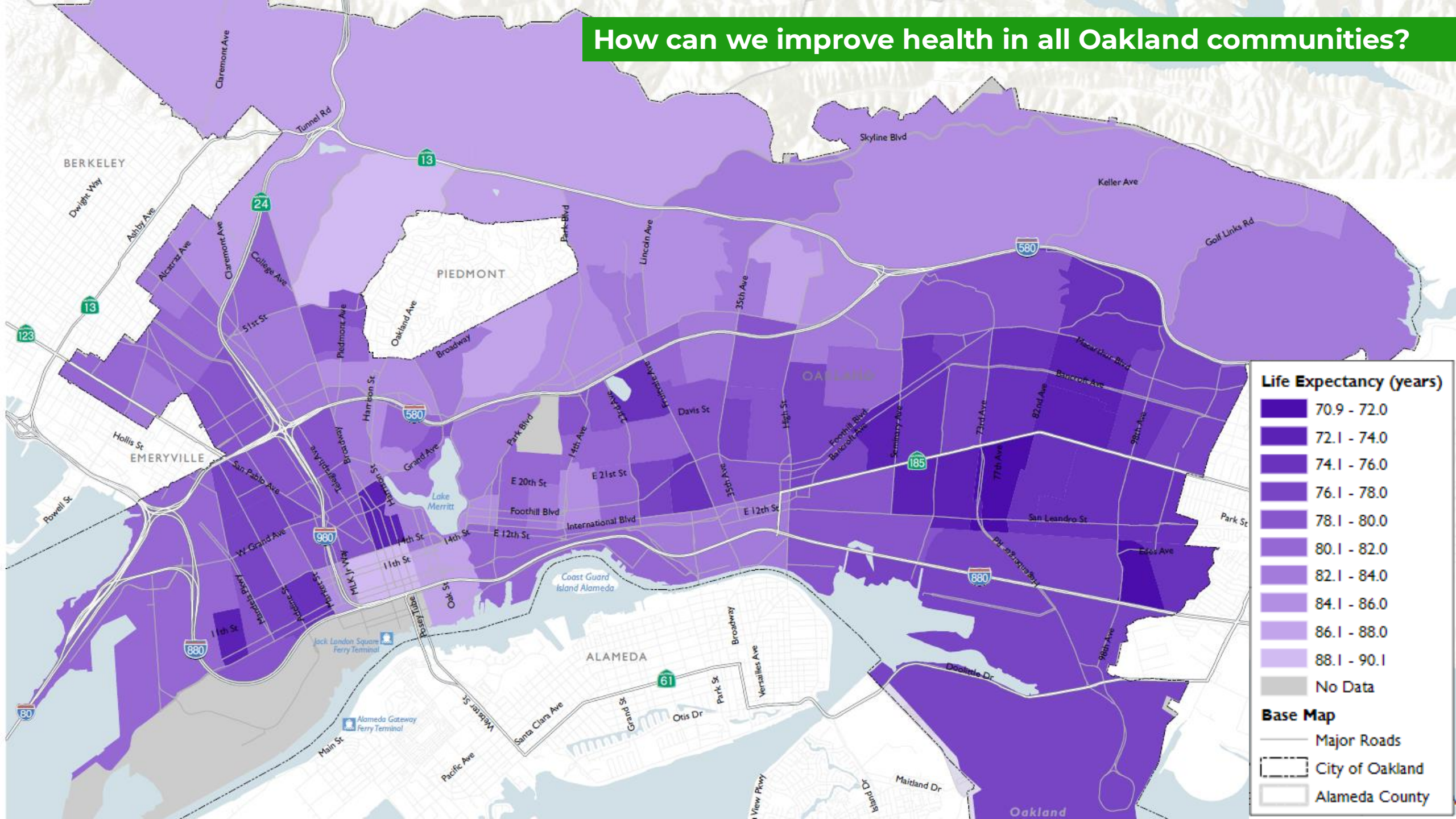


Lowest
\$23,819

Highest
\$219,861

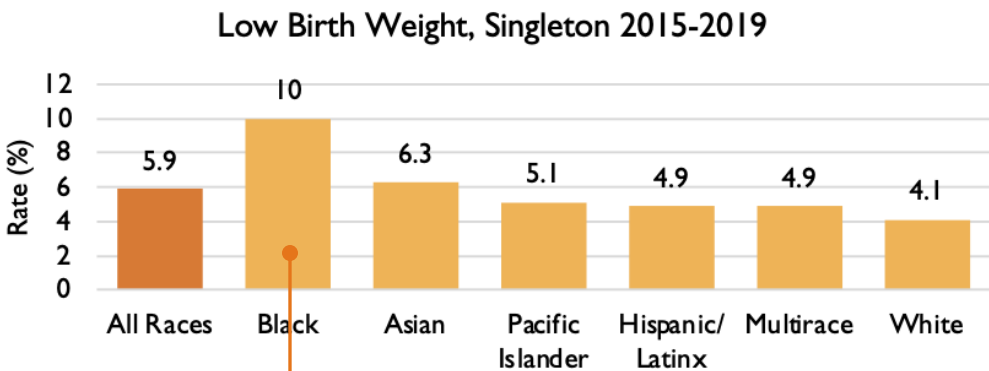
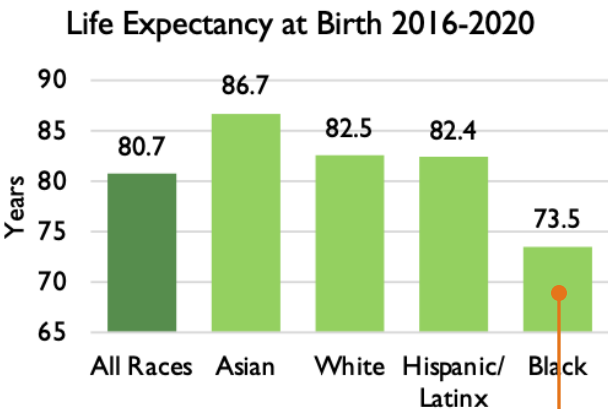
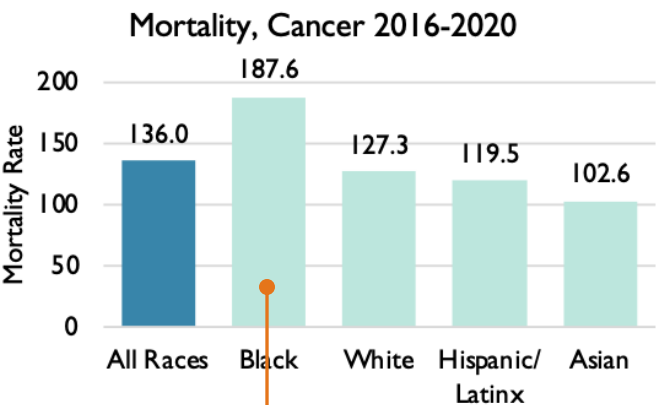
2019

How can we improve health in all Oakland communities?



Health Inequities

Chart 2-3: Difference in Health Outcomes by Race



Note: Pacific Islander, Native American/Alaskan, and Multirace populations are included in "All Race" but are not disaggregated due to the small size (less than 10 people) of these groups.
Sources: Alameda County Public Health department, 2021; Dyett & Bhatia, 2022

Most Impacted

Most Impacted
2018 Equity Score: 77
(Data above would result in 76 = worse)

Most Impacted

What's the City doing now?

- **Racial equity indicators**

- Update to 2018 Oakland Equity Indicators Report (by end of 2022)
- Environmental Justice Communities screening indicators

- **Environmental Justice and Racial Equity baseline**

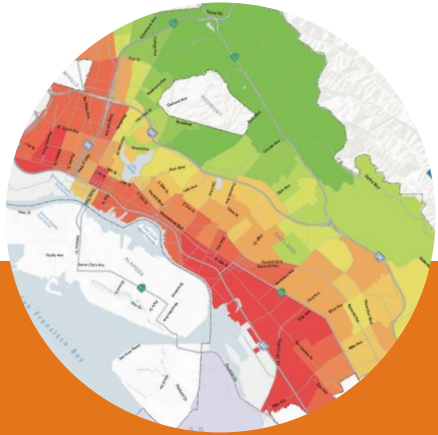
- Documents recent City and community efforts
 - Builds on Department of Race & Equity's Oakland Equity Indicators (2018) and OakDOT's Geographic Equity Toolbox
 - *Geographic and racially disaggregated analysis*
- Findings to inform environmental justice policies in EJ Element and across General Plan
- Data to ground-truth with the community in upcoming engagement
 - Continue to refine locations and priorities of Environmental Justice Communities

EJ Requirements

- SB 1000 (Healthy Communities Act): Cities and Counties must adopt an Environmental Justice Element, or other related goals, policies, and objectives if they have "disadvantaged communities"
- Environmental justice element or set of goals, policies and objectives must:
- Reduce health risks in these communities
- Promote community engagement in the public decision-making process
- Prioritize improvements and programs that address needs of "disadvantaged communities"



SB 1000 Process

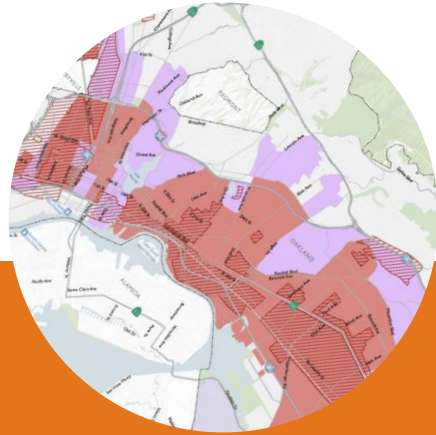


CalEnviroScreen
4.0 (2021)

Environmental Pollution
Burdens

Sensitive/Vulnerable
Populations

Especially Top 25% of
scores (SB 535)



Low-Income Areas

At or below:
80% of statewide median
or

State HCD Low-Income
limit (80% Alameda
County Area Median
Income)



SB 1000 Topic Areas

Pollution Exposure & Air Quality
Unique/Compounded Health Risks

Safe & Sanitary Homes

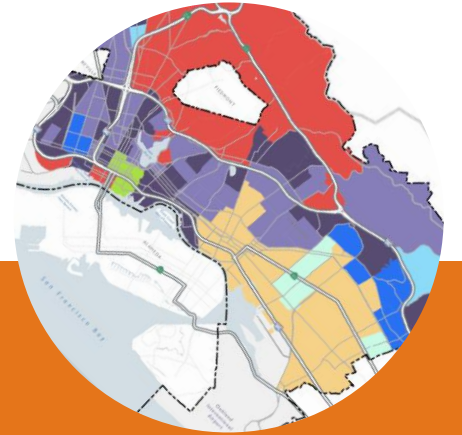
Public Facilities Access

Physical Activity

Healthy Food Access

Civic Engagement

Investment Prioritization



Local Indicators

Race

Redlining

Oakland Equity Indicators
(DRE 2018)

and more...

How can we make Oakland more environmentally just?

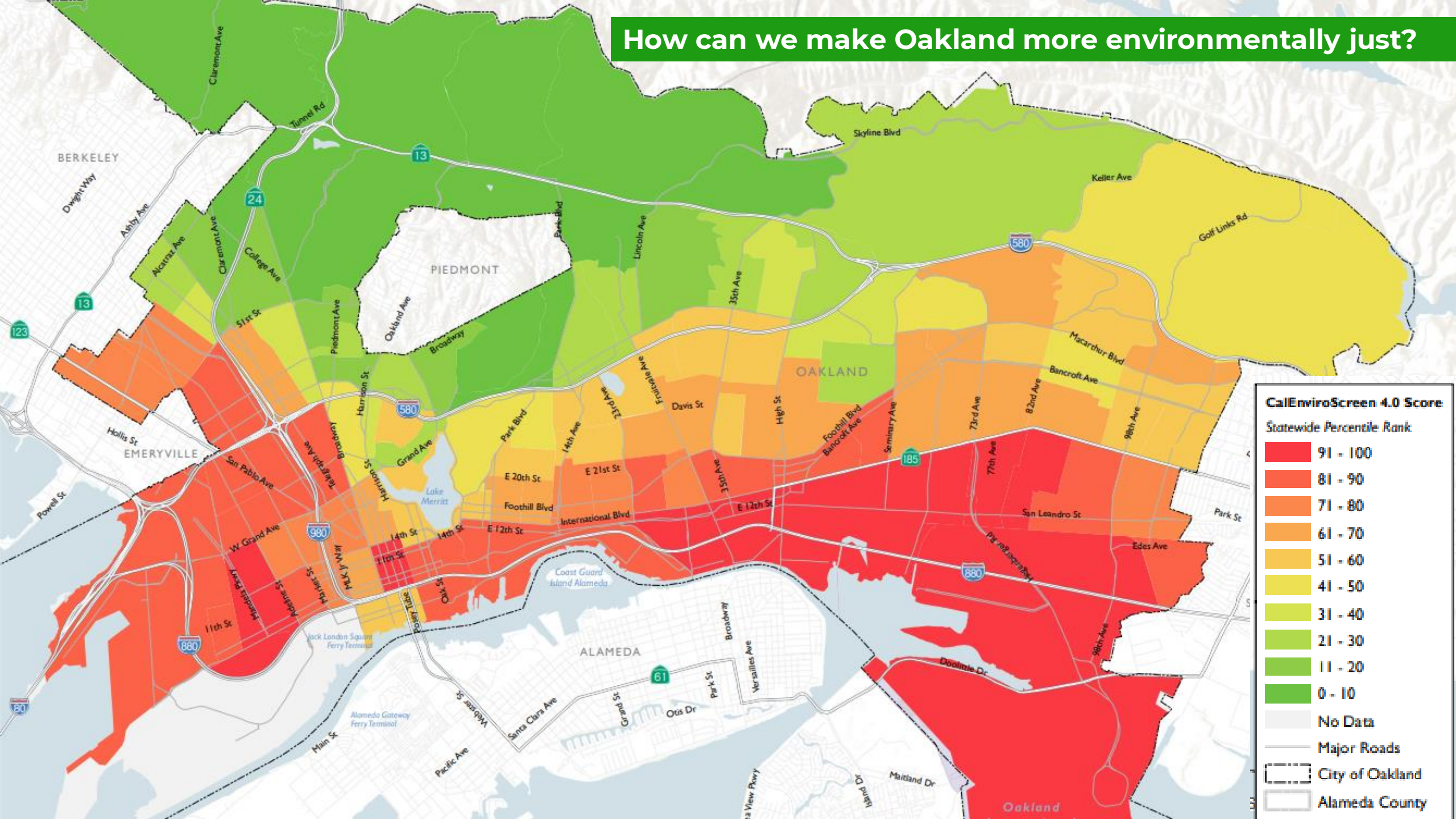
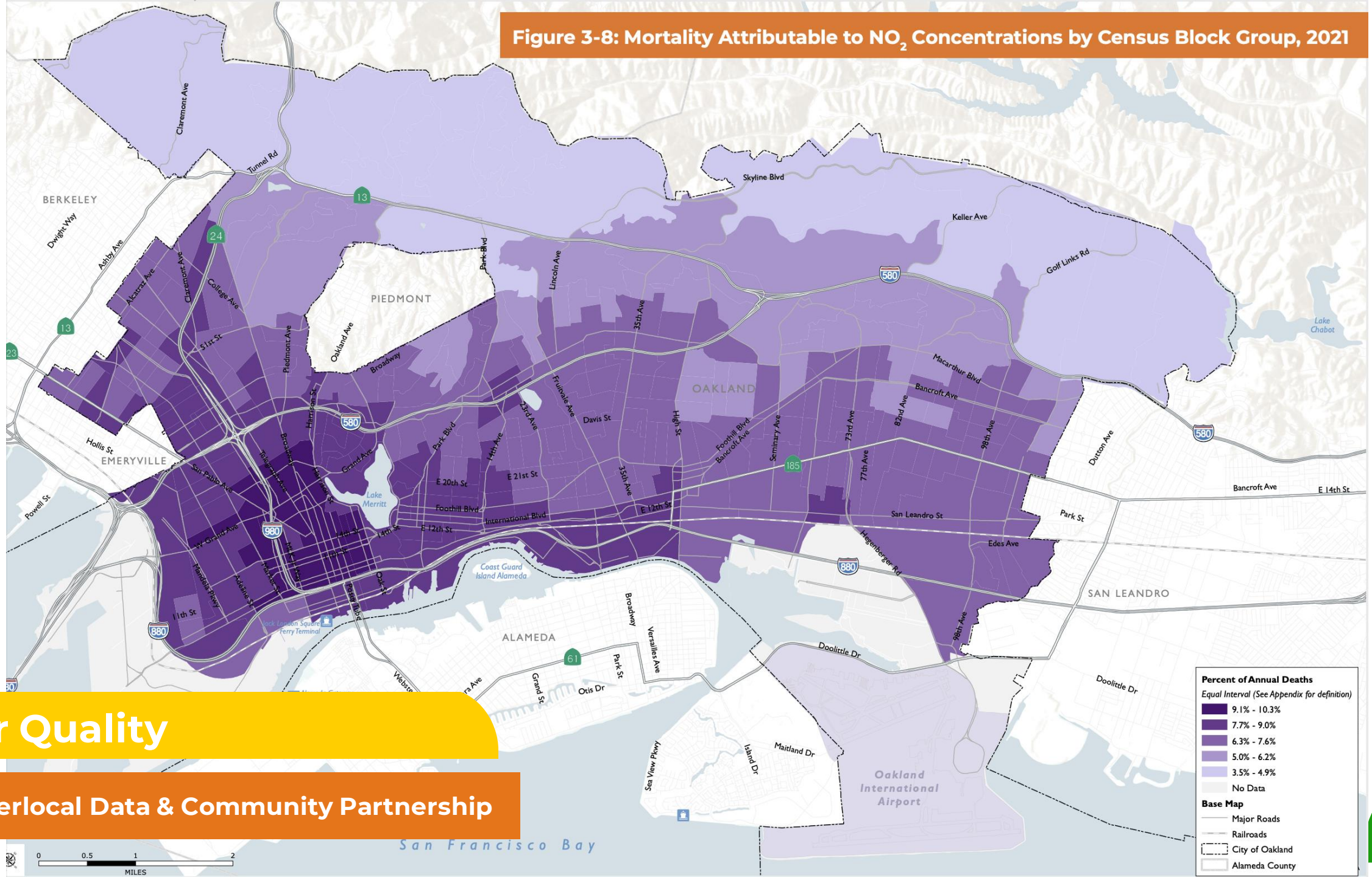


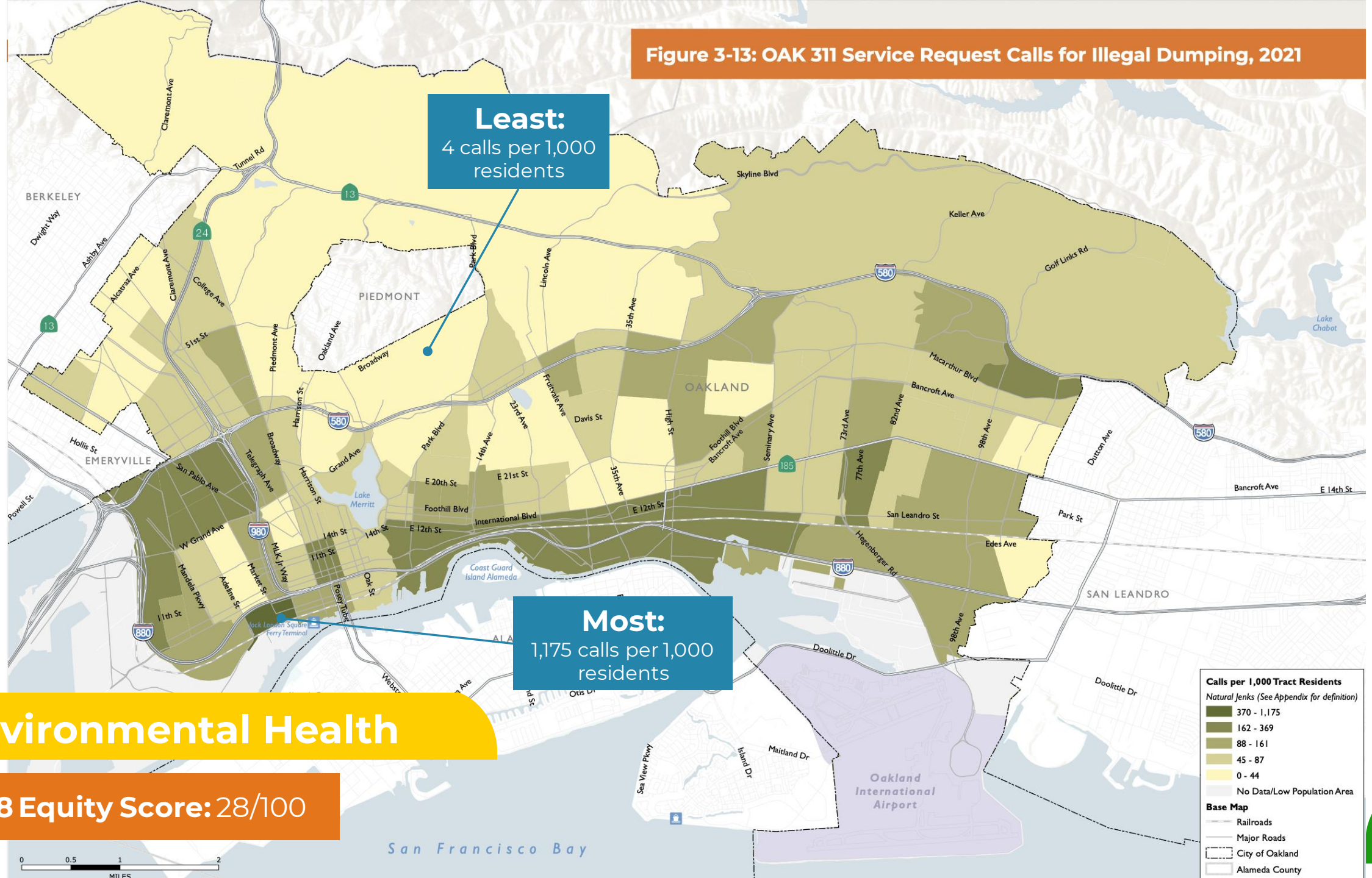
Figure 3-8: Mortality Attributable to NO₂ Concentrations by Census Block Group, 2021



Air Quality

Hyperlocal Data & Community Partnership

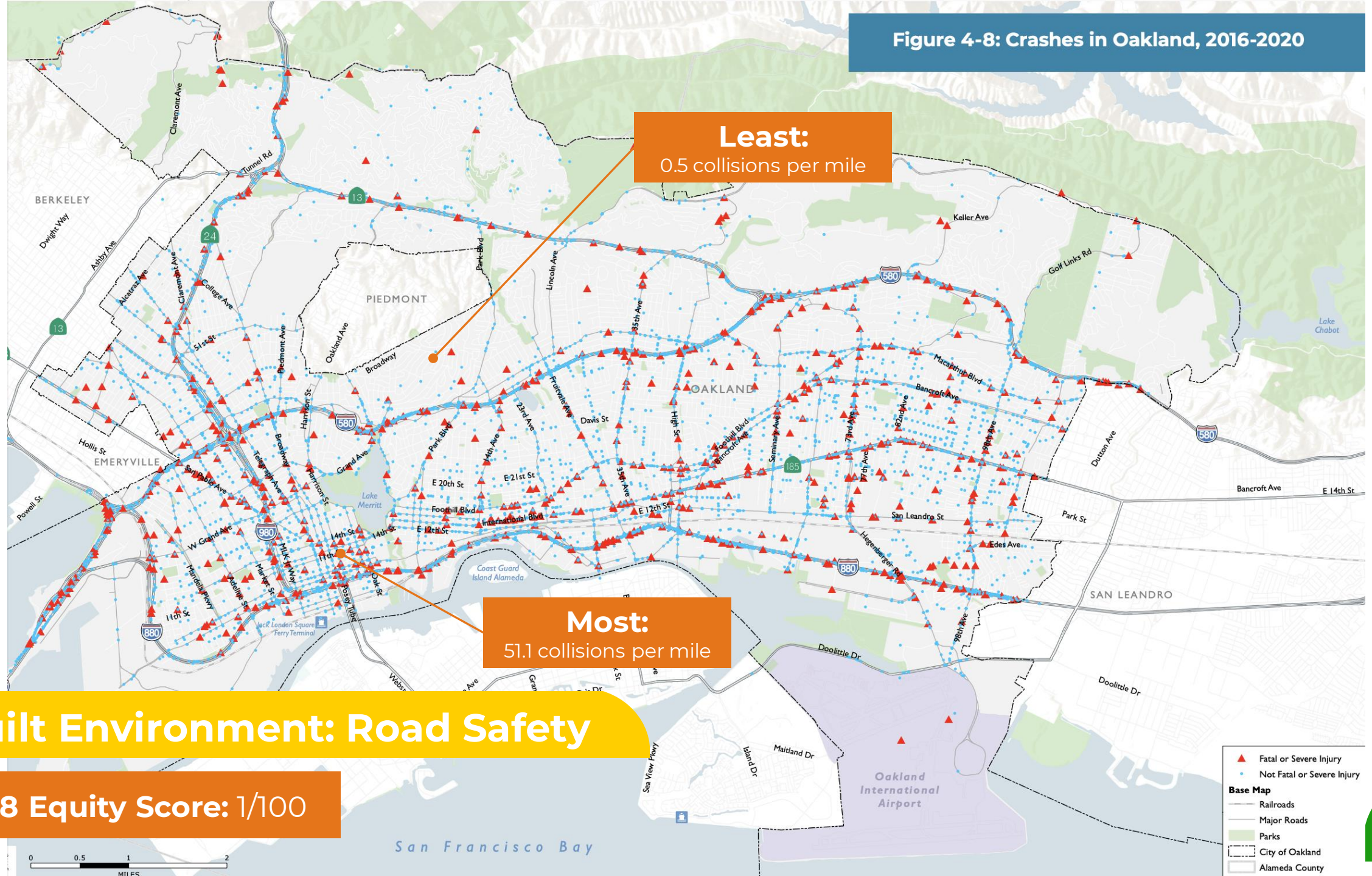
Figure 3-13: OAK 311 Service Request Calls for Illegal Dumping, 2021



Environmental Health

2018 Equity Score: 28/100

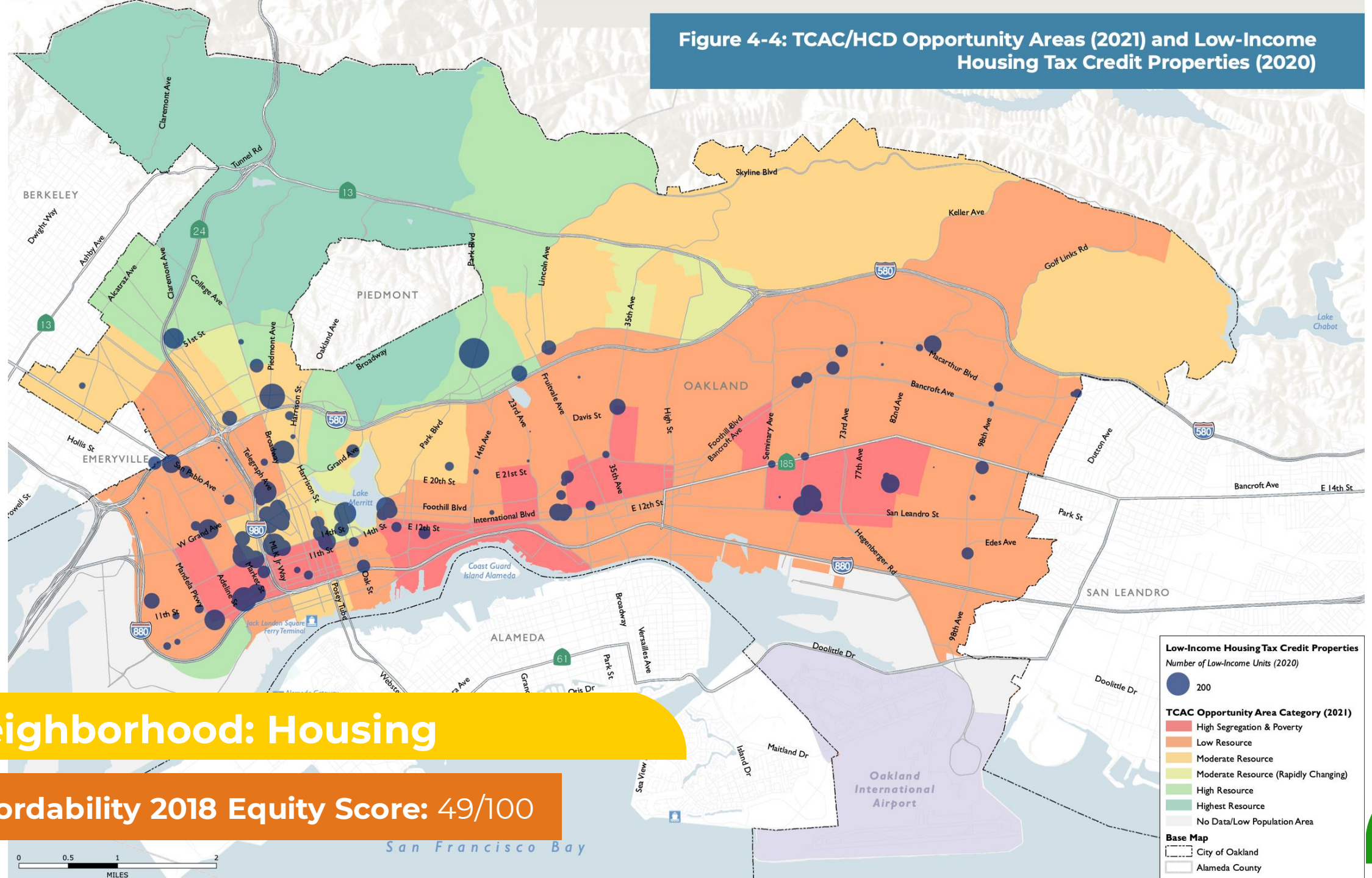
Figure 4-8: Crashes in Oakland, 2016-2020



Built Environment: Road Safety

2018 Equity Score: 1/100

Figure 4-4: TCAC/HCD Opportunity Areas (2021) and Low-Income Housing Tax Credit Properties (2020)

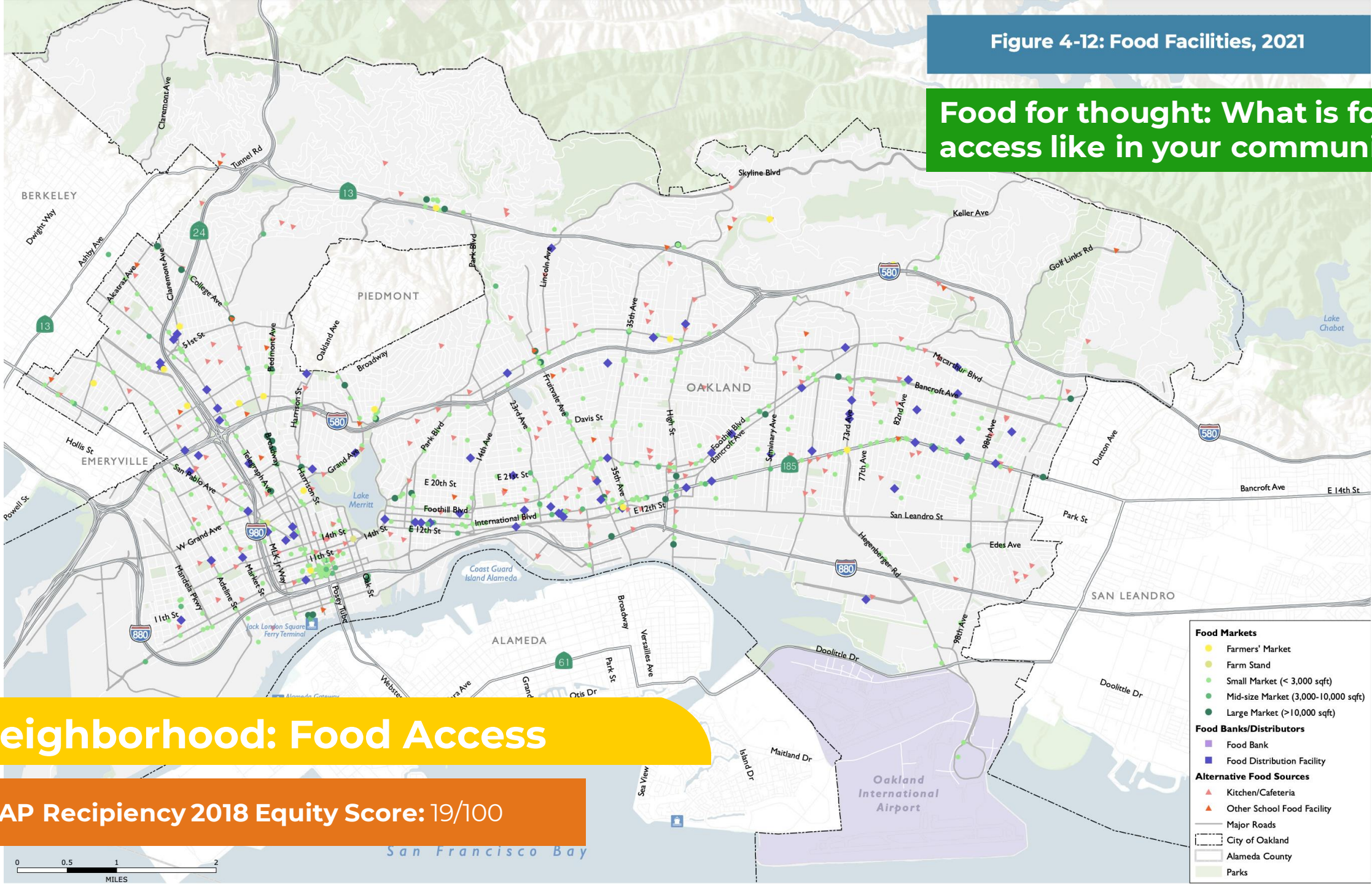


Neighborhood: Housing

Affordability 2018 Equity Score: 49/100

Figure 4-12: Food Facilities, 2021

Food for thought: What is food access like in your community?



Neighborhood: Food Access

SNAP Reciprocity 2018 Equity Score: 19/100

Figure 5-4: Lack of Internet Access at Home, 2019

2nd Least: 0.6%
Population: 1,802

Least: 0%
Population: 805

Most: 36%
Population: 1,484

Social/Community Environment

2018 Equity Score: 35/100

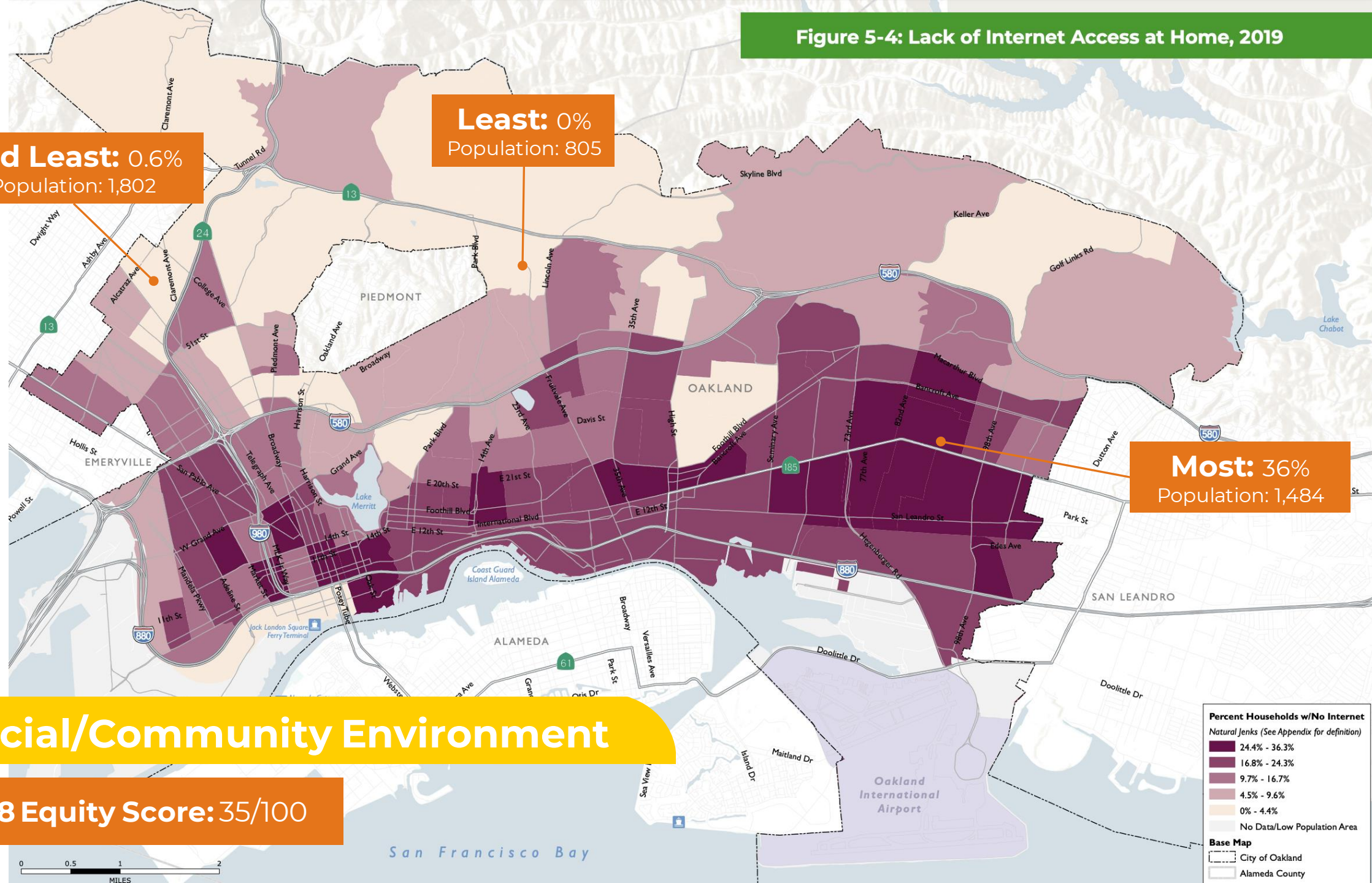
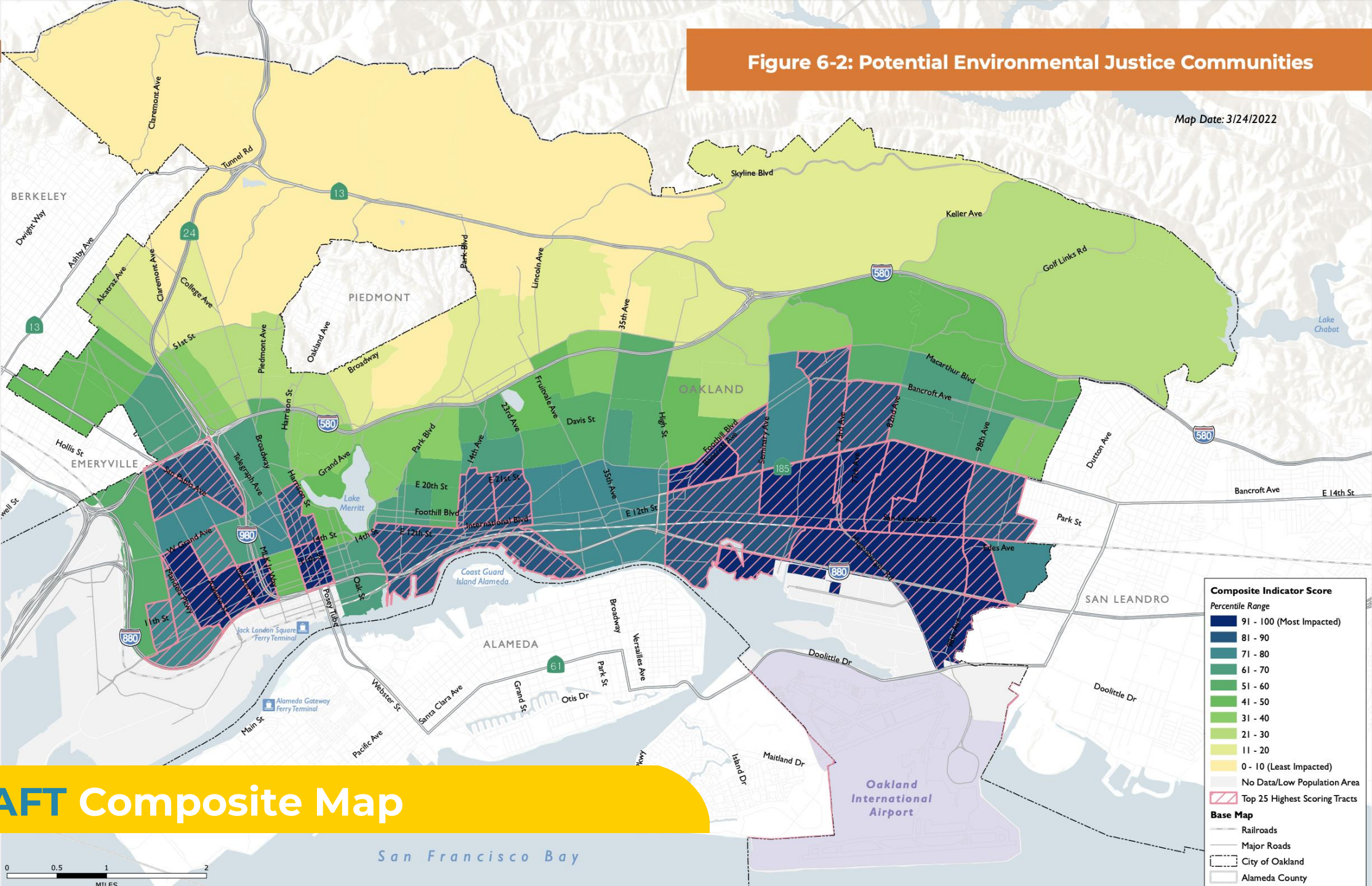


Figure 6-2: Potential Environmental Justice Communities

Map Date: 3/24/2022

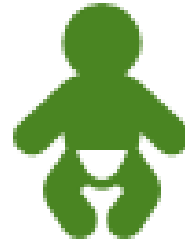


DRAFT Composite Map

Safety

How is safety related to equity and EJ?

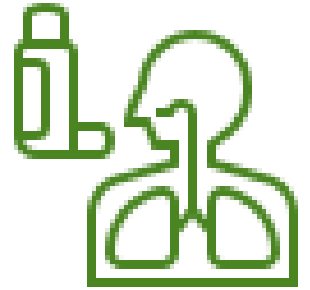
- Oakland faces many hazards, including:
 - **Environmental:** wildfire, earthquakes/seismic hazards, flooding, extreme weather, climate change
 - **Humanmade:** hazardous materials
- Certain populations may be more vulnerable to hazards



Infants and youth



Communities of color



Pre-existing conditions



Older populations or mobility impairments



Low-income communities

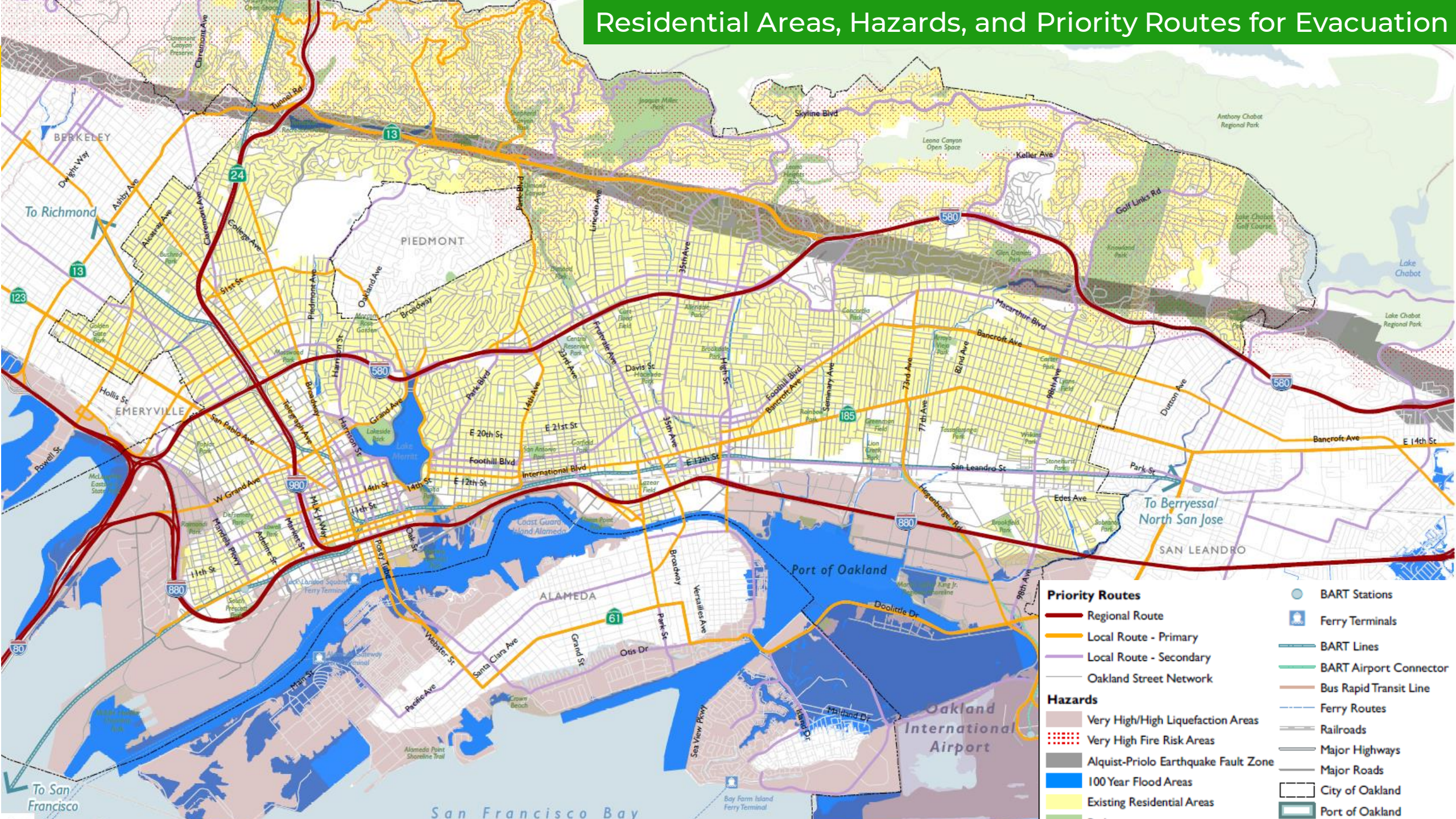


People who work outside

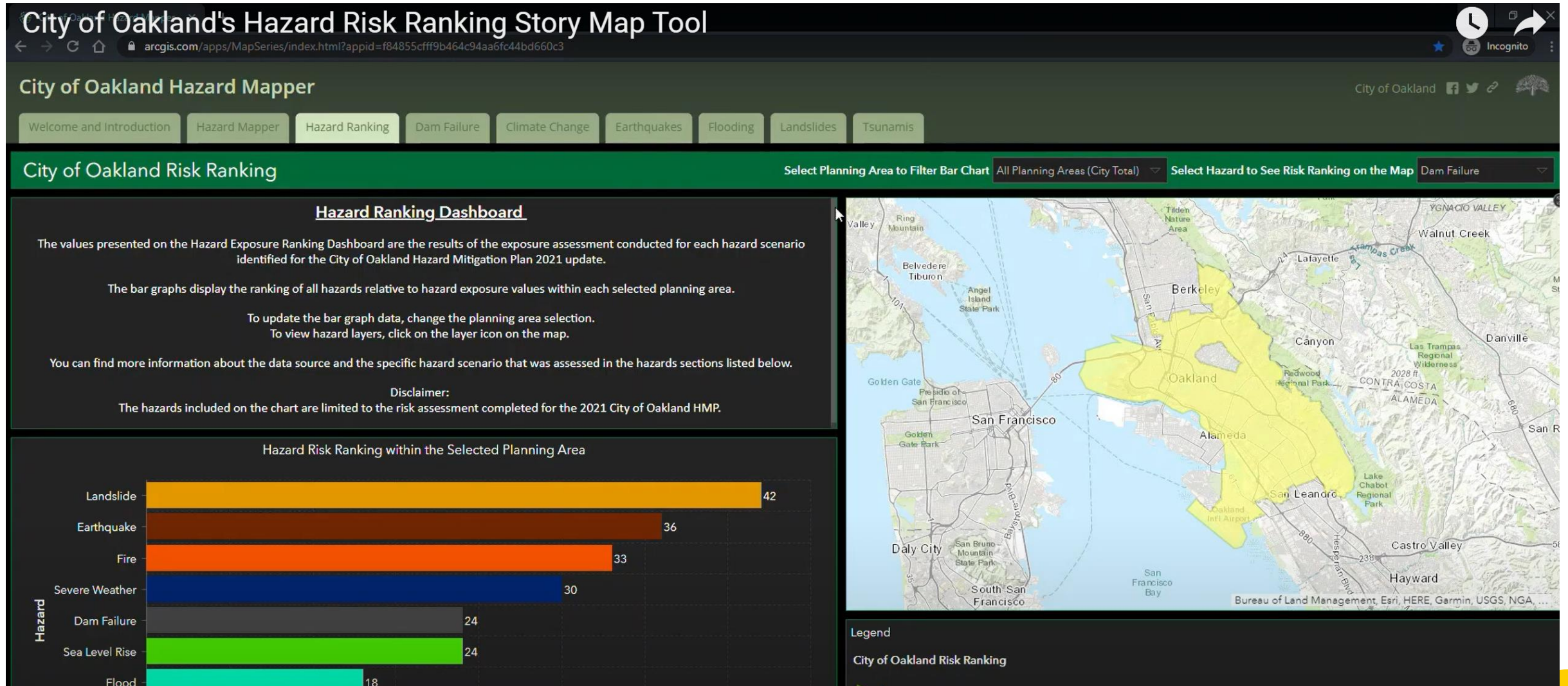


No vehicle/accessible transit

Residential Areas, Hazards, and Priority Routes for Evacuation



OAKLAND'S LHMP



Select the planning area of interest on the filter bar on the top right



Questions?

Discussion

Discussion

- What are the biggest **environmental justice** issues in your community?
 - Safe and sanitary housing
 - Physical activity
 - Community facilities
 - Healthy food access
 - Civic engagement and investment
 - Pollution and air quality
 - Others?
- How should the City address these issues?
- What are the biggest **safety** issues (environmental or human-made hazards) in your community?
 - How should the City address these issues?

Calendar of Events



FOR EVENT DETAILS - VISIT OUR WEBSITE:
<https://www.oaklandca.gov/topics/general-plan-update>

Exit Poll

Take a minute to answer a few other questions about yourself, what topics you want to see at future workshops, and how we can improve outreach moving forward!

- <https://forms.gle/4SorUZiepw2td1Tv8> English
- <https://forms.gle/e2oCGB8U8sA8Jwq66> Spanish
- <https://forms.gle/dMWccCYz1iWLxbKz6> Cantonese



Visit the general Plan Update website for more information and to sign-up for regular updates:

www.oaklandca.gov/topics/general-plan-update