

Oakland General Plan Update 2045 Town Hall #1



OAKLAND 2045
GENERAL PLAN

March 26, 2022

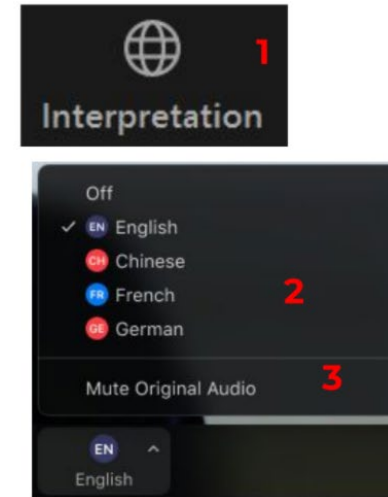
INTERPRETATION

1. In your meeting/webinar controls, click Interpretation.
2. **Select the language that you would like to hear: English.**

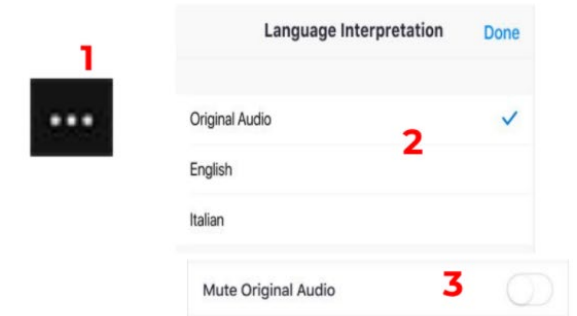
1. En los controles de la reunión o el seminario web, haga clic en Interpretación.
2. Haga clic en el idioma que desee escuchar: español (Spanish).
3. (Opcional) Para escuchar solo el idioma interpretado, haga clic en Silenciar audio original.

1. 在會議/網路研討會控制項中,按一下口譯。
2. 按一下您想要聽的語言:中文 (Chinese)。
3. (非必要步驟) 若只想聽口譯內容, 請按一下關閉原始音頻。

Windows | macOS

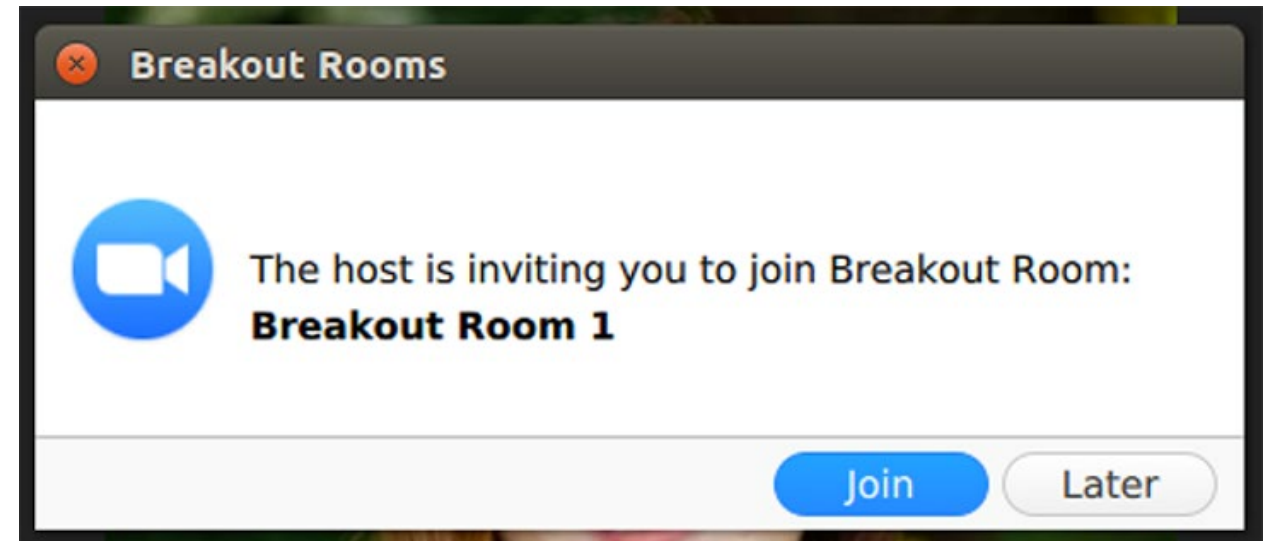
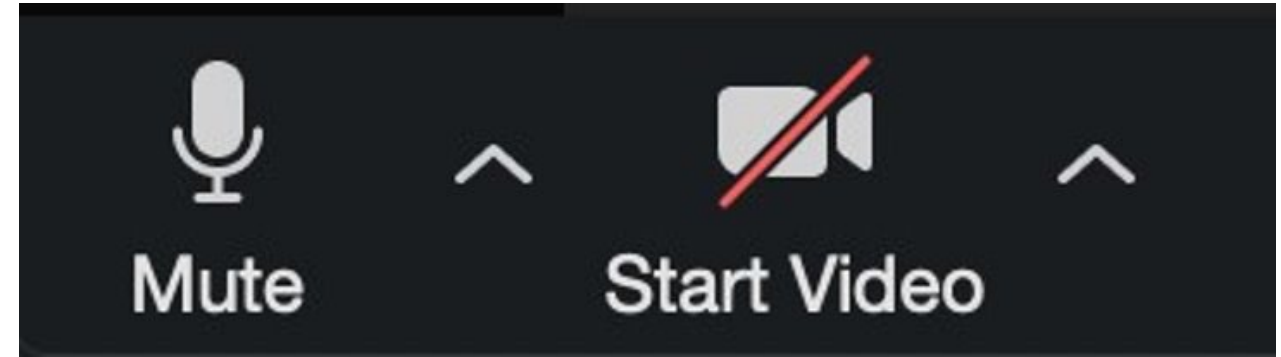


Android | iOS



ZOOM PROTOCOL

1. Please be respectful. There will be zero tolerance for inappropriate behavior or language
 2. Please mute yourself if you are not actively speaking
 3. Discussion will be in breakout rooms. Look for the invite to move to your room. If there are any problems, you can “Ask For Help” by clicking on the button at the bottom of your screen
- La traducción en español está disponible en una sala de grupos. Por favor “levante la mano” (marque *9 por teléfono.)
 - 翻译将在分组讨论室进行。如果需要翻译，请举手。如果您正在使用电话，请按 *9



If on phone:
*6 to unmute
*9 to raise hand

Agenda

- Welcome!
 - Trivia
- General Plan Update Overview
- Big Questions
- Q&A
- Discussion Groups
- Next steps



The background of the slide is a vibrant yellow, filled with a complex, organic pattern of white, curved, and wavy lines that resemble stylized waves or a marbled texture. In the center of this pattern is a solid orange rectangular box.

Welcome!

Trivia



What famous resident did NOT live at 1200 Lakeshore?

- Candice Bergen, title character on the CBS sitcom Murphy Brown
- Huey Newton, founder of the Black Panther Party
- Zendaya, Emmy-award-winning actress and former Disney star
- Stephen "Steph" Curry, a six-time NBA All-Star and player for the Golden State Warriors
- Stephen Kerr, eight-time NBA champion and coach for the Golden State Warriors

Trivia

Oakland currently has 183 miles of bikeways. Approximately how many miles of bikeways has Oakland built since 2000?

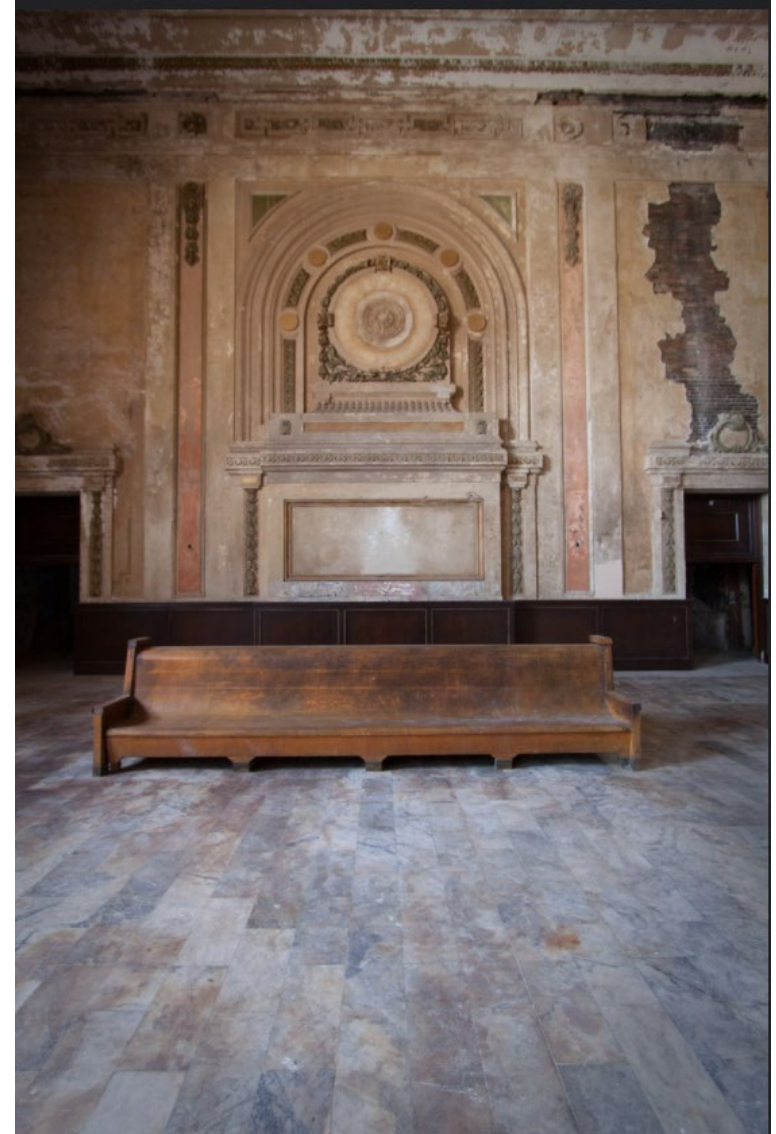
- 27 (15% of current trails)
- 50 (27% of current trails)
- 64 (35% of current trails)
- 98 (54% of current trails)
- 115 (63% of current trails)
- 130 (71% of current trails)



Trivia

What is this building?

- An Oakland church
- A local museum
- An old train station
- A historic home
- BONUS: What is it used for now?





General Plan Background

What is a General Plan?



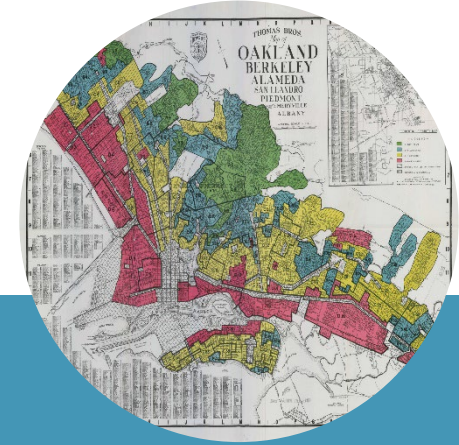
"Constitution" for development and conservation.

Establishes citywide vision and supporting goals, policies, and implementation measures.



Opportunity to look back to identify past challenges and accomplishments.

Provides consistent direction for future development.



Opportunity to Reduce Racial Inequities & Promote Inclusive Engagement

Engage our community in the planning and decision-making process.

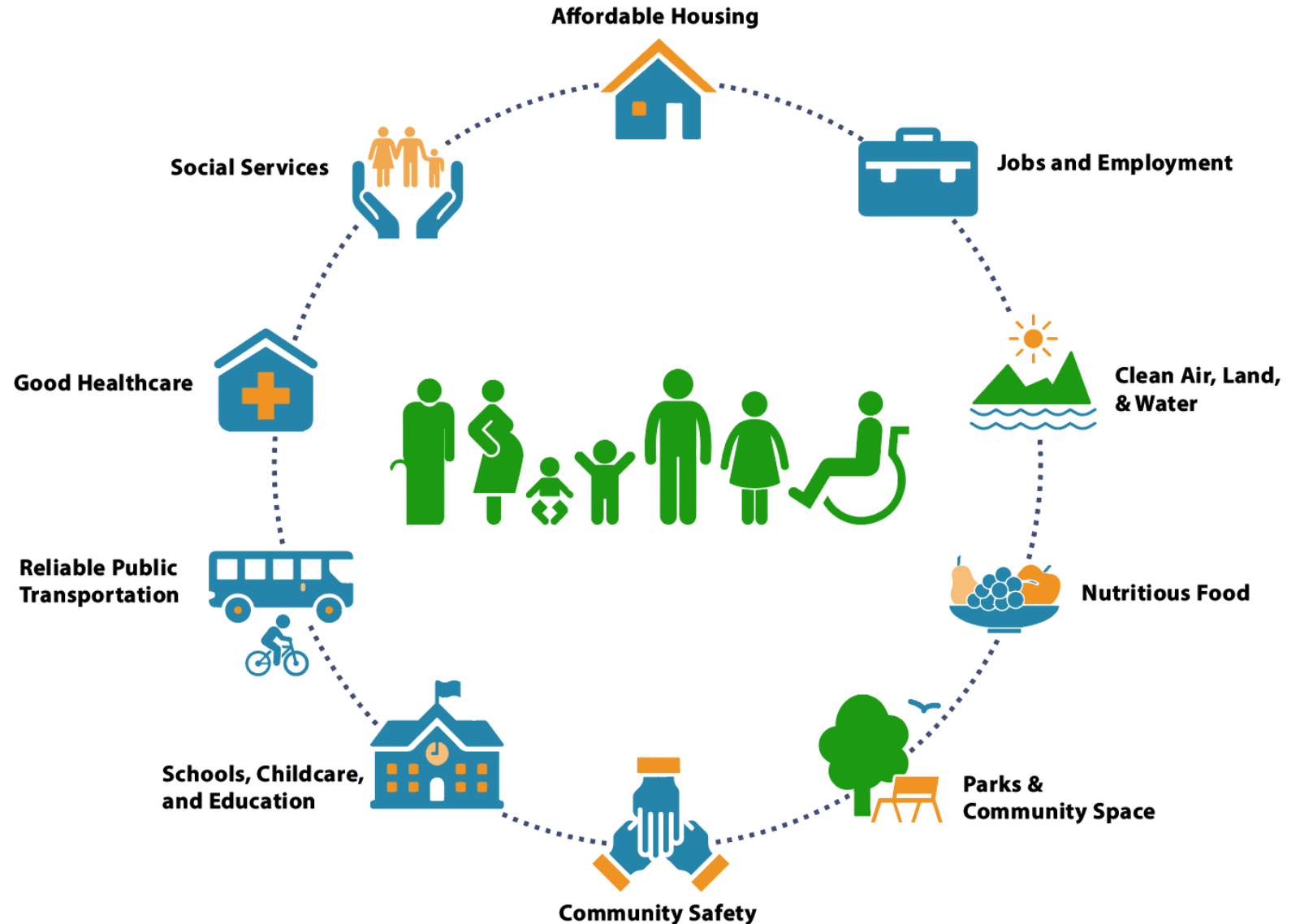
HOW DOES THE GENERAL PLAN AFFECT OAKLAND?

- Development and use of property (zoning)
- Location and types of housing
- Number and types of jobs
- How people get around
- Number and quality of parks
- Risks from hazards
- Nurture cultural and natural resources



How does this affect me?

- What does my community need right now?
- How will things change in the future? What do I want Oakland to be like?
- How might my community's needs be different in the future?



Elements required to be updated by early 2023



HOUSING
Adopted 2014



SAFETY
Adopted 2004
(Last amended 2021)



ENVIRONMENTAL
JUSTICE
****New Requirement****
May be stand-alone or
integrated



INDUSTRIAL LANDS
POLICY
****New****

What do they cover?



Housing

- Addresses Oaklander's **housing needs, at all income levels** (2023-2031)
 - Housing Production
 - Tenant Protections
 - Affordable housing preservation
- Where housing should go



Safety

- Identifies **natural** and **human-made hazards** (wildfire, earthquake, climate change, flooding, evacuation, hazardous materials) and **ways to reduce impacts**



Environmental Justice

- Addresses needs of **most impacted and vulnerable** communities
- Includes air quality and pollution; safe and sanitary housing; healthy food access; physical activity; investment prioritization; civic engagement

These issues overlap!

Other required elements



OPEN SPACE,
CONSERVATION &
RECREATION (OSCAR)

Adopted 1996



NOISE
Adopted 2005



LAND USE
& TRANSPORTATION

Adopted 1998

Includes Estuary Policy
Plan for areas below
Interstate 880
(Adopted 1999)

Optional elements



INFRASTRUCTURE AND FACILITIES ELEMENT

****New Element****

Overarching goals and policies for city infrastructure over the long term.

Reflects capital improvements identified in the LUTE, OSCAR, Safety, and other General Plan elements.



HISTORIC PRESERVATION ELEMENT

Adopted 1994

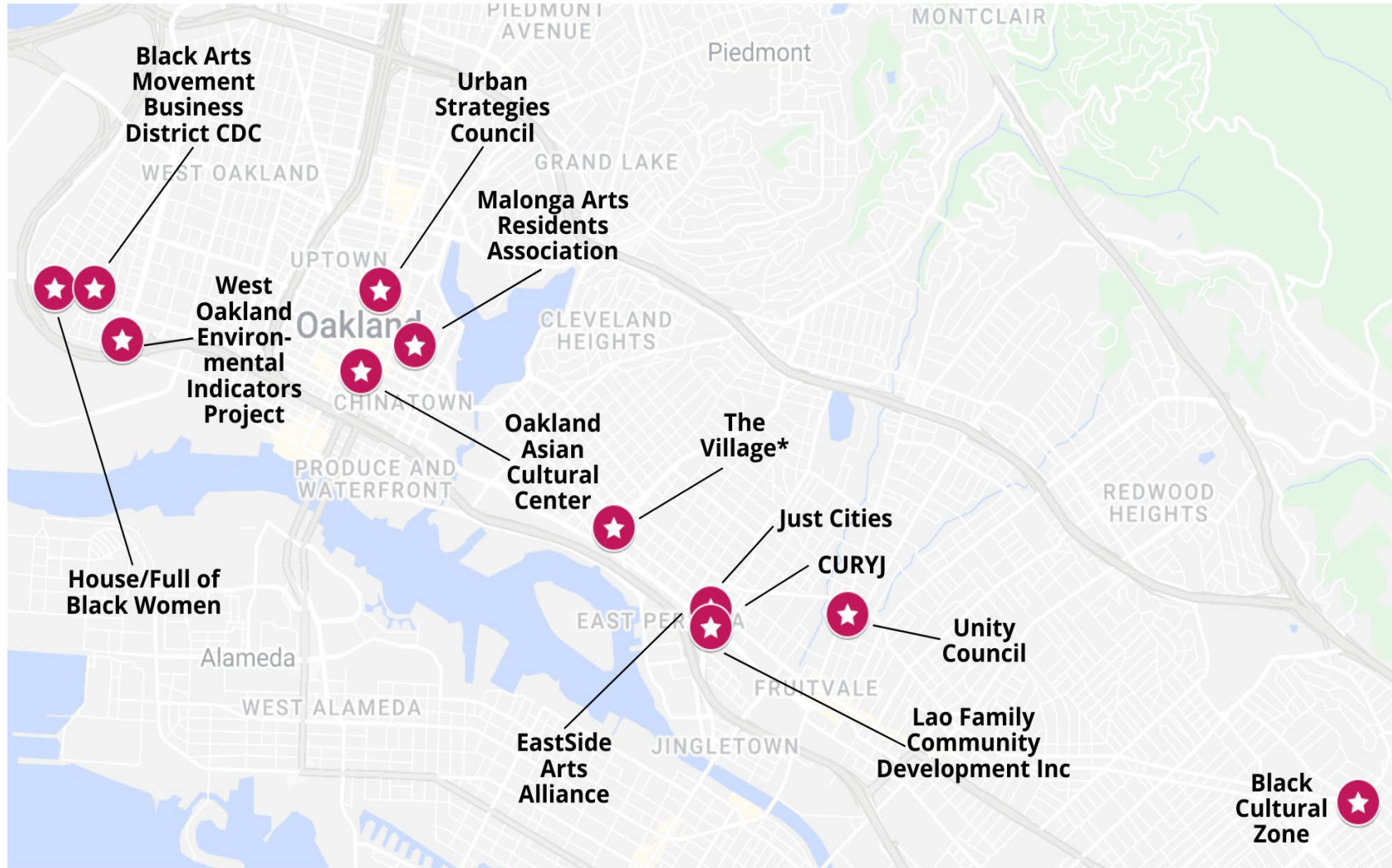
Amended 1998



SCENIC HIGHWAYS ELEMENT

Adopted 1974

Community Engagement



Community engagement for Oakland's most impacted residents

- Working class communities
- Communities of color
- Unhoused
- Formerly incarcerated
- Youth
- Communities experiencing environmental injustices

*The Village operates as a network of encampments across Oakland without one address.

Community Engagement Events



A. "Karriem" Khan, @ak2webd3, and Jessica Lee, @jessicazylee, discuss their vision for Oakland's future @oaklandasiancc.

Pop-up and Community Hub Events

- Fruitvale, Chinatown Eastmont, San Antonio, Hoover Elementary
- Lunar New Year, Black Joy Parade
- Over 900 people reached in-person

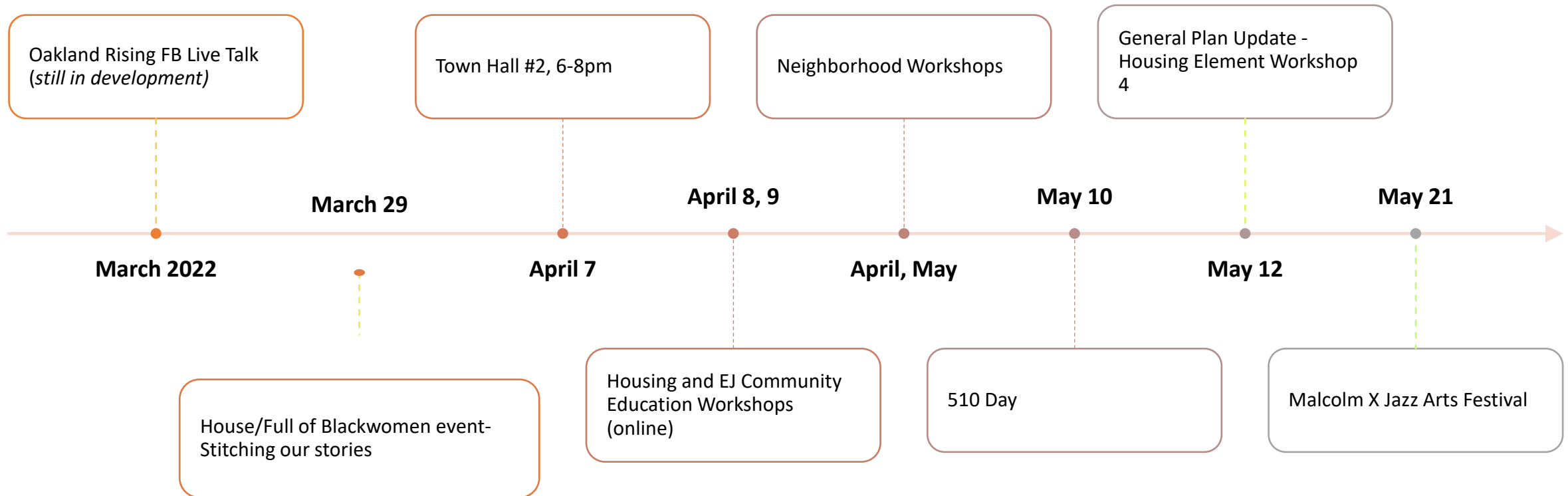
Neighborhood and Townhall Workshops

- 3 Housing Element Focused Workshops
- >200 participants
- **Discussion Groups**
- **Decisionmaker Meetings**
- **Online Engagement**

Upcoming Opportunities

- **Town Hall 1 (today)**
 - What should Oakland look like in the future?
 - What are the big issues?
 - What are your big ideas?
- **Town Hall 2 (Apr 7)**
 - How can we focus more on equity across all issues?
 - Deep Dive into Environmental Justice
- **Housing and Environmental Justice Grounding Workshop (April 8 and 9)**
 - **Community education workshop**
 - Review the past and present policies that led to today's conditions in housing and environmental justice
- **Neighborhood Workshops, Discussion Groups, Pop-Ups, Community Events**
 - What are my top priorities and ideas for my neighborhood? Where can I talk even more in-depth about the issues I care about?

Calendar of Events



FOR EVENT DETAILS - VISIT OUR WEBSITE:

<https://www.oaklandca.gov/topics/general-plan-update>

Big Questions

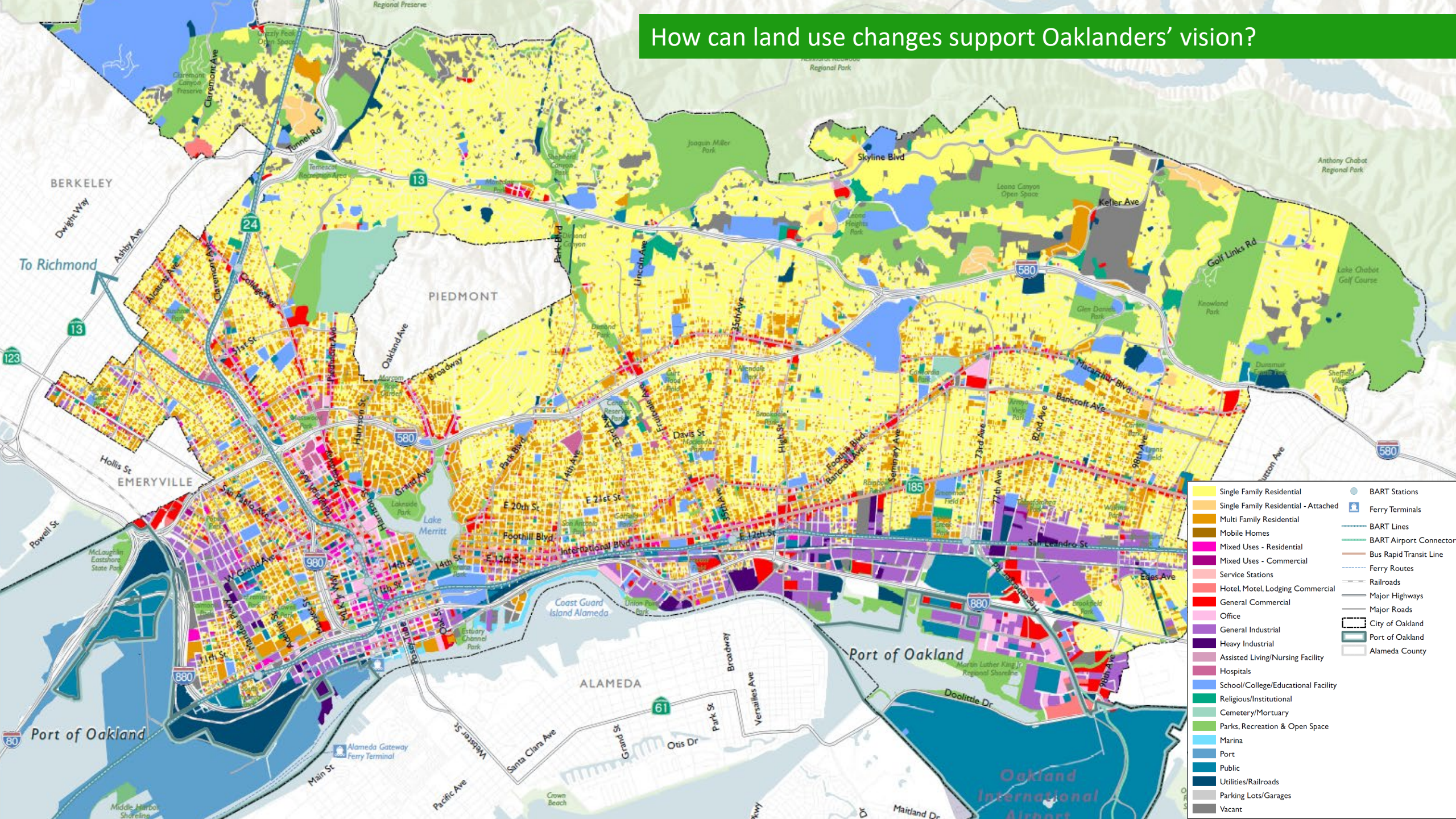
What's your headline for Oakland in 2045?

Imagine you're a journalist writing a headline about Oakland in 2045.

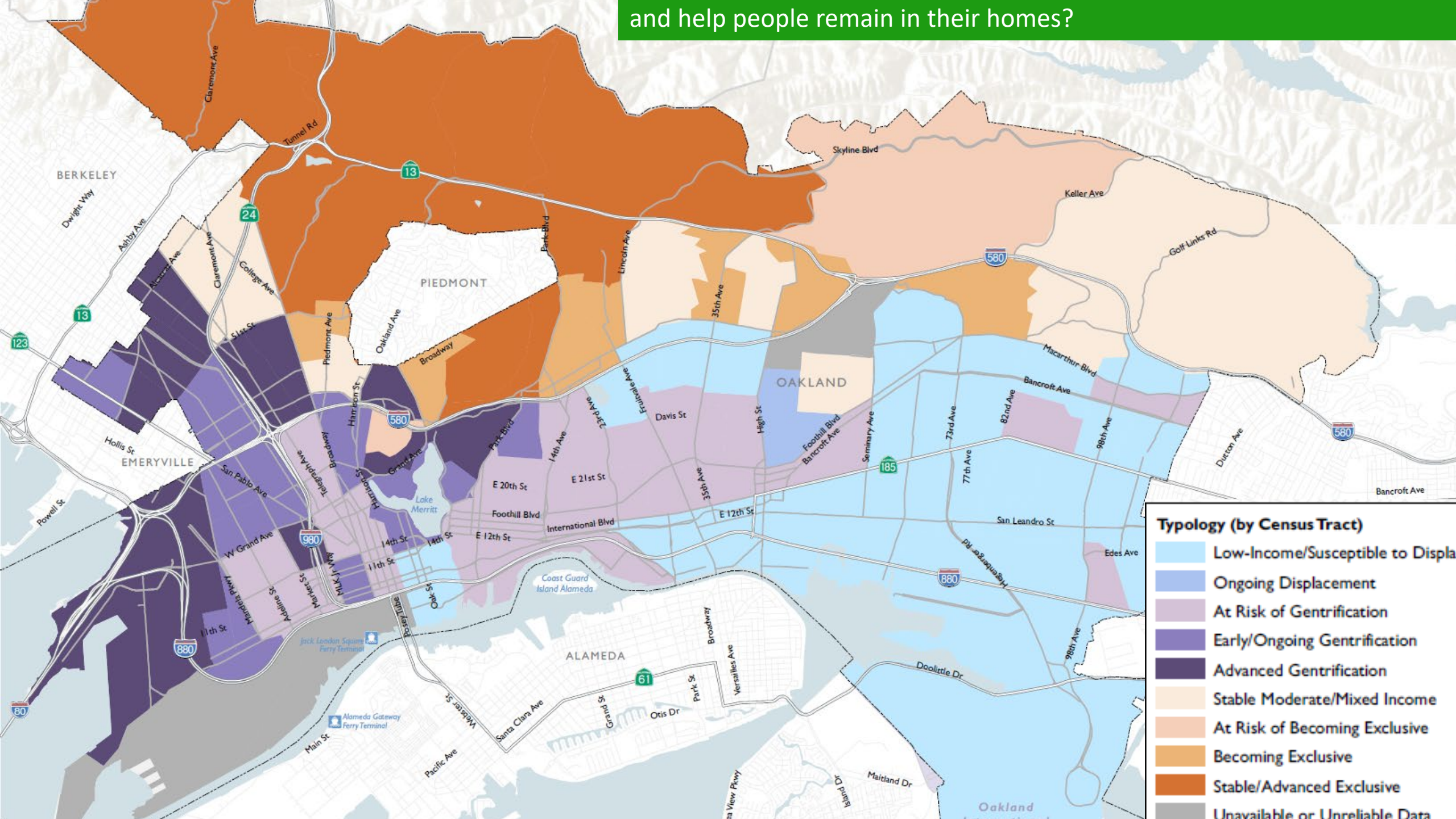
What's the accomplishment you're highlighting in your article?

Please try to keep to 6 words!

How can land use changes support Oaklanders' vision?



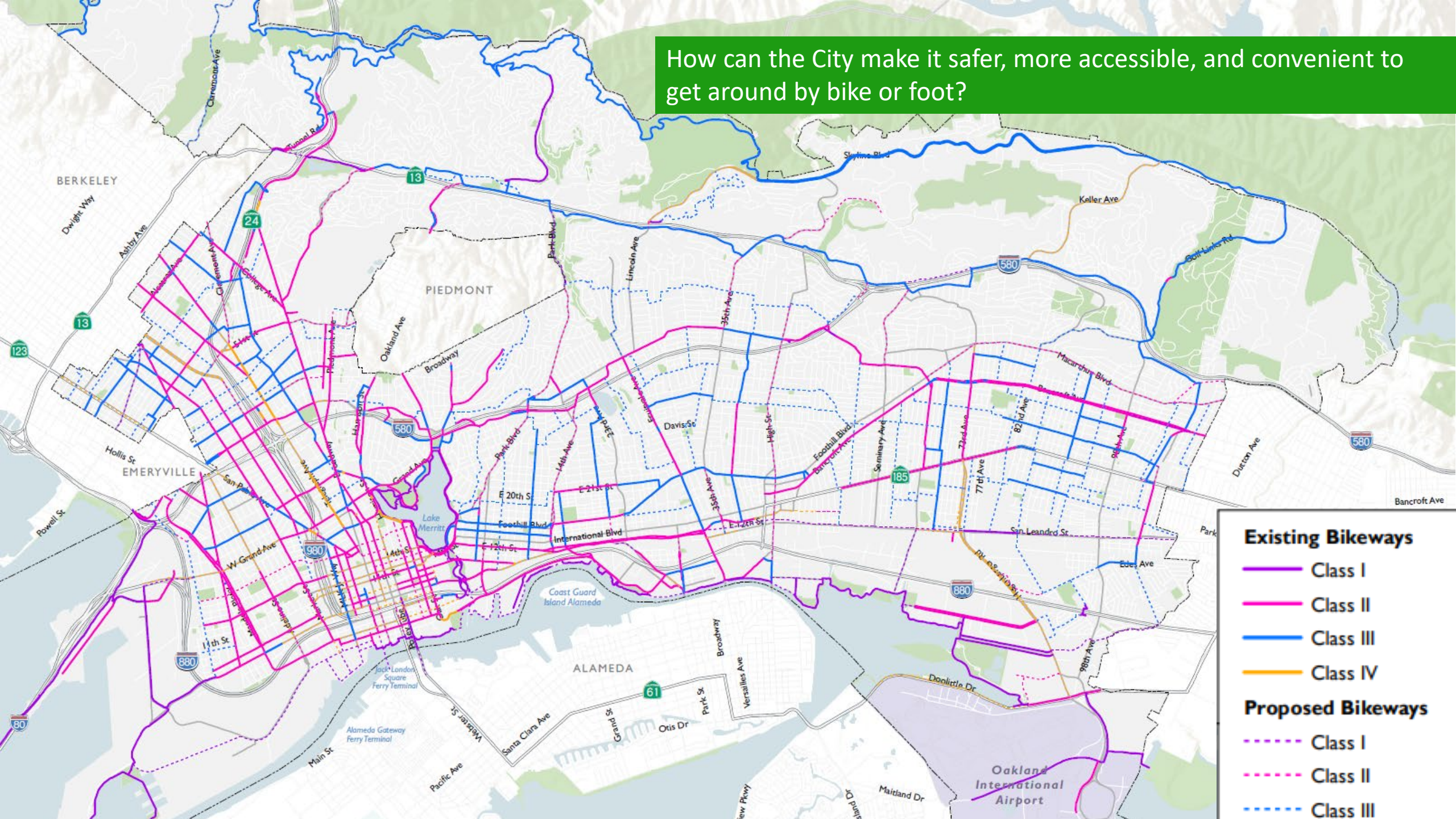
and help people remain in their homes?



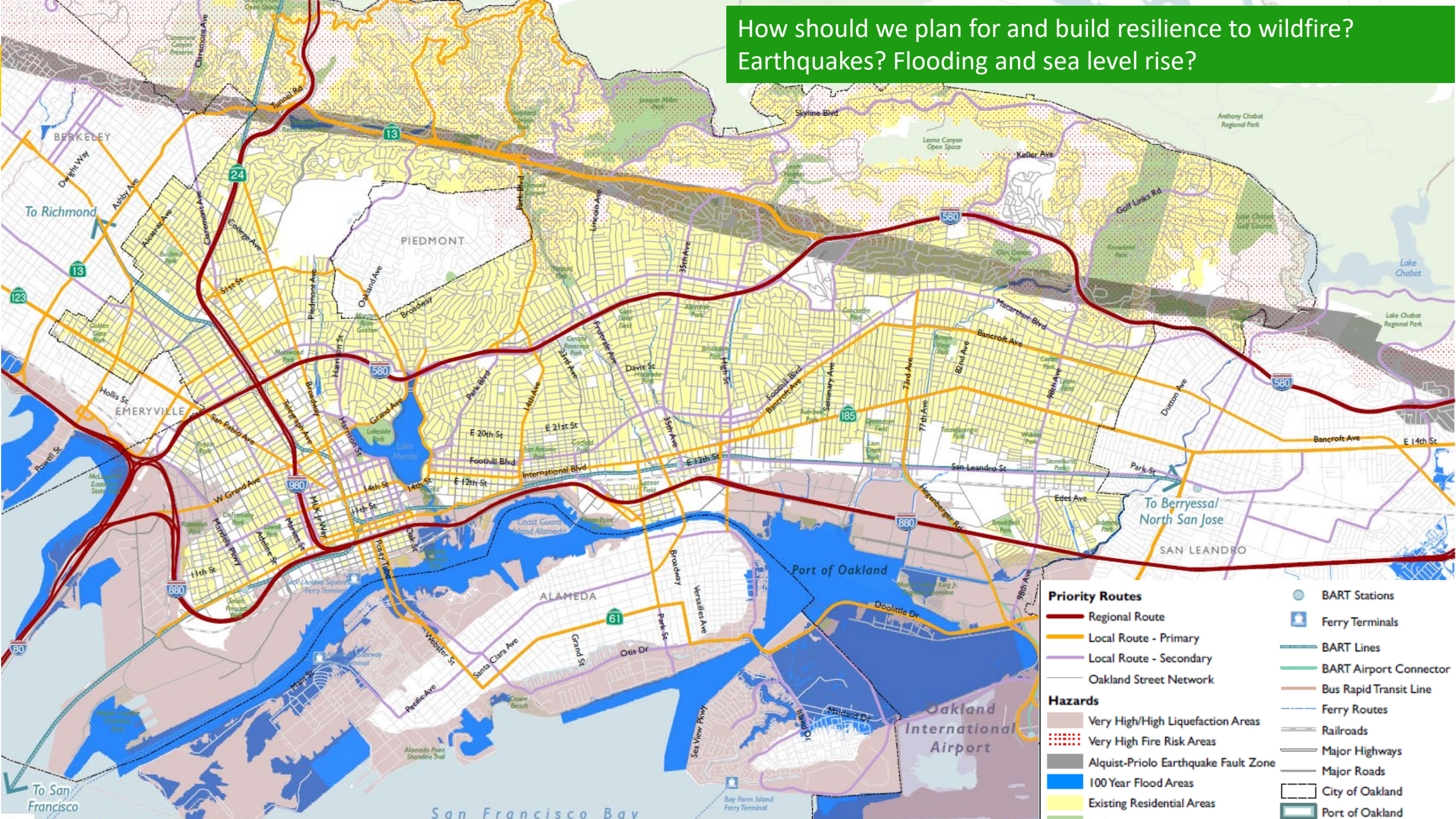
What big transportation improvements will help people and goods get around?



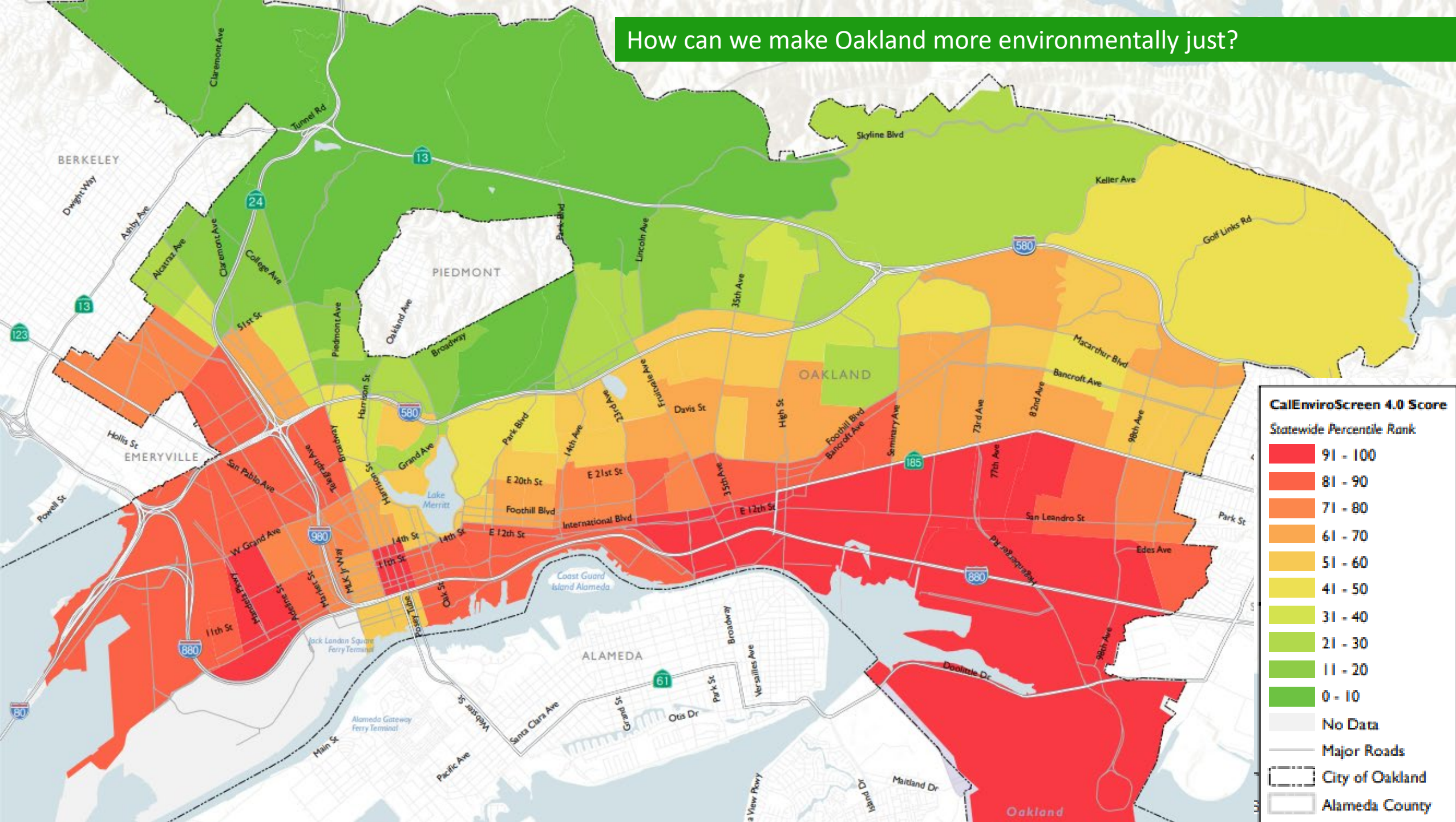
How can the City make it safer, more accessible, and convenient to get around by bike or foot?



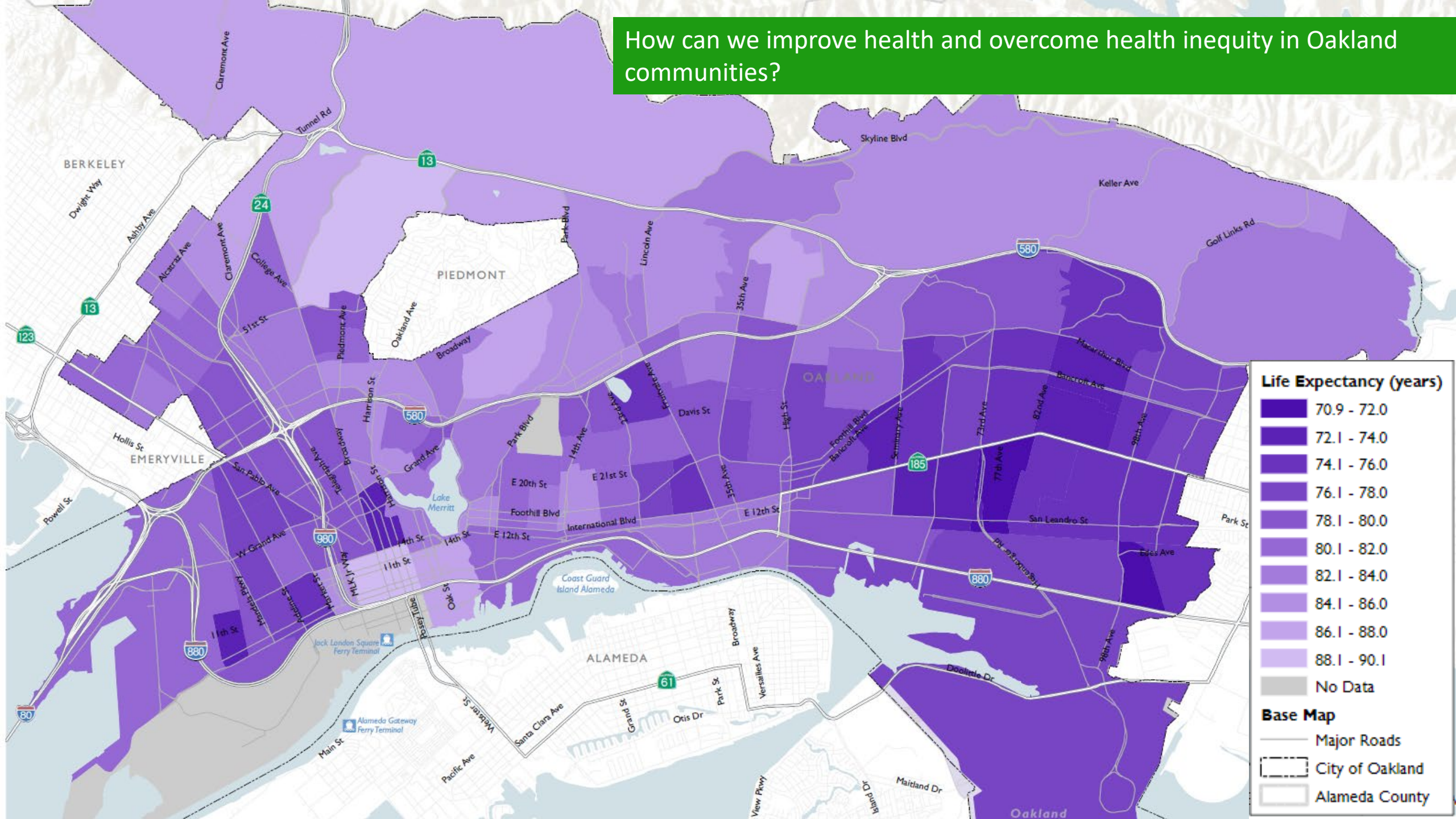
How should we plan for and build resilience to wildfire?
Earthquakes? Flooding and sea level rise?



How can we make Oakland more environmentally just?



How can we improve health and overcome health inequity in Oakland communities?



The background of the slide is a vibrant yellow, filled with a complex, organic pattern of white, curved, and wavy lines that resemble stylized waves or a marbled texture. In the center of the slide, there is a solid orange rectangular box.

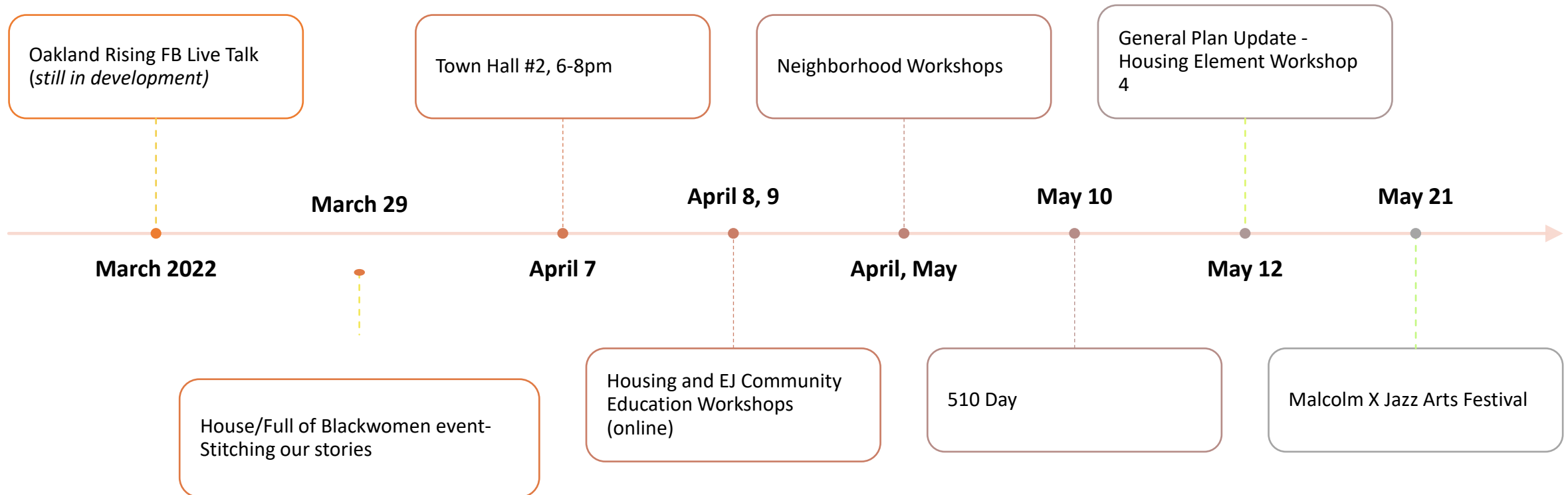
Questions?

Discussion

Discussion

- **What do you love most about Oakland?**
 - What about your neighborhood?
 - What would you change?
 - What should stay the same?
- **What issues is your community working on right now?**
 - What issues are the biggest priority?
 - Tell us about your proudest accomplishment in your community.
- **What are your big ideas for the future of Oakland?**
 - What do you think are the biggest challenges? What about the biggest opportunities?
- **What does Oakland look like and feel like in 20 years?**

Calendar of Events



FOR EVENT DETAILS - VISIT OUR WEBSITE:

<https://www.oaklandca.gov/topics/general-plan-update>

Exit Poll

Take a minute to answer a few other questions about yourself, what topics you want to see at future workshops, and how we can improve outreach moving forward!

- <https://forms.gle/GAno8KAw9qXyTcch8> English
- <https://forms.gle/9sbbxzPSdQ2tWWNp9> Spanish
- <https://forms.gle/XAYULBaMm1WS82wW8> Chinese



Visit the general Plan Update website for more information and to sign-up for regular updates:

www.oaklandca.gov/topics/general-plan-update