

Have You Taken Advantage of Your Bulky Junk Services?

Curbside and Drop Off Appointments Available to All Oakland Renters and Owners.



Schedule your bulky services:

1. Annual bulky junk drop off.
2. Annual curbside bulk pick up.*

*A second appointment is available to qualifying residents.

Call
1-888-WM-Bulky
or visit
OaklandRecycles.com
/Bulky

Look for more information:

- New collection rates effective July 1, 2024
- Recycle, compost, trash, & hazardous waste sorting guides and services

Single-family Home Trash and Recycle Collection Rates Effective July 1, 2024

Minimum trash service capacity is 20 gallons per unit.

1 Unit Home: Rates include trash, compost, recycle, and bulky drop off/ pickup services*.

	20 gal	32 gal	64 gal	96 gal
Monthly	\$53.36	\$60.57	\$106.71	\$160.27
Quarterly	\$160.08	\$181.71	\$320.13	\$480.81

Rate discount available for qualifying low-income seniors. Contact WM at 510-613-8710 to apply.

2-4 Unit Homes: Rates cover trash, compost, and bulky service* but do not include recycling which is billed separately at \$18.51 per unit.

	20 gal	32 gal	64 gal	96 gal
Monthly	\$34.85	\$42.06	\$88.20	\$141.76
Quarterly	\$104.55	\$126.18	\$264.60	\$425.28

* Bulky drop off service includes up to 4 cubic yards of bulky junk at the Davis Street Resource Recovery Complex in San Leandro.

Bulky pickup service includes up to 4 cubic yards of bulky junk and a limited number of large items for curbside pickup.

Call 1-888-WM-Bulky or visit OaklandRecycles.com/Bulky for more details and to make an appointment.



250 Frank Ogawa Plaza, Suite 5301
Oakland, CA 94612

Para obtener una copia de este folleto, visita OaklandRecycles.com

Để lấy bản sao của tài liệu này, xin truy cập OaklandRecycles.com

有關此副本宣傳冊，請訪問
OaklandRecycles.com

Recycle Right - It's the Law

To slow the impacts of climate change, State law (SB 1383) requires everyone (including businesses) to sort their discards correctly.

Surcharges may apply to a compost or recycling cart found with the wrong materials. Additionally, the City may require households with repeat contamination and overflowing trash carts to increase trash service. Visit OaklandRecycles.com/laws for more information about mandatory sorting.



Trash, Compost & Bulky Drop Off & Collection Services, Low Income Discount Information

Waste Management of Alameda County, Inc. (WM)
510-613-8710



Recycling Service

California Waste Solutions
510-OAKLAND (625-5263)

Report Illegal Dumping

OAK311 - 510-615-5566
www.oaklandca.gov/services/oak311



City of Oakland

Recycling Hotline
510-238-SAVE (7283), recycling@oaklandca.gov

RECYCLE

回收 REICLAR TÁI CHẾ



COMPOST

堆肥 ABONO PHÂN HỮU CƠ



TRASH

垃圾 BASURA RÁC



New colored carts and bins are slowly being delivered in Oakland for SB 1383 compliance.

How do I recycle right?

- Empty out all food and liquid.
- Keep recyclables loose, do not bag.
- Only place the following items in recycle:



Recycle #1 (bottles), #2 (jugs), and #5 (tubs)



Empty Glass, Aluminum, Metal & Plastic Containers, Beverage & Soup Boxes, Clean Paper & Cardboard

How do I compost right?

- Do not place in plastic bags, including those labeled bioplastic or compostable.
- Only place the following items in compost:



Food Scraps, Non-coated/lined Food-Soiled Paper, Plant Debris, Untreated Wood

What goes into trash?

- State law prohibits compostables from being placed in trash.
- Only place non-recyclable and non-compostable items in trash.



Including compostable plastic bags.



Non-Recyclable, Non-Compostable, Non-Hazardous Materials

What do I do with extra recycling?

- Ask for an extra recycle cart for no additional cost by calling CWS at 510-625-5263.
- Break down and bundle extra cardboard (under 3'x3') and place neatly next to recycle cart.
- Extra plastic, glass, or metal bottles and cans can be placed in a paper bag next to your recycle cart.



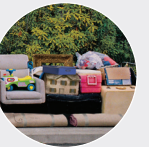
What do I do with extra plant debris?

- Tie or bundle branches (must be less than 4' long and 6" across).
- Use large paper gardening bags or use your own extra container (cannot exceed 75 pounds or contain dirt).
- Set out neatly next to compost cart for pickup.
- Note: Plant debris set out in a plastic bag will be charged as extra trash collection.



What do I do with extra trash?

- Use the Bulky Junk Drop Off and Pickup Service at no extra cost. Call WM at 1-888-WM-Bulky or visit OaklandRecycles.com/Bulky to make an appointment.
- Purchase a \$12.75 waste tag to place on your 32-gallon trash bag. Call WM at 510-613-8710 to order your extra waste tag.
- Increase trash cart size if you have regular overflow in your trash cart.



Follow these instructions to dispose of items that do not fit or belong in any cart or bin.

Household Toxic Waste

- Take hazardous waste to the Household Hazardous Waste (HHW) Facility at 2100 East 7th Street, Oakland. Limit is 15 gallons/125 pounds per vehicle.
- Call (800) 606-6606 or visit stopwaste.org/hhw for days and hours of operation.



Household Batteries & Used Motor Oil

- Put old household batteries in a sealed plastic bag on top of the recycle cart or bin.*
*Tape off all coin batteries.
- Put your Motor Oil Recycling Kit next to the recycle cart. Contact CWS for a free kit.



Fats, Oils, and Grease (FOG)

- Do not pour cooking oils, shortening, dairy products, sauces or salad dressings down the drain - it blocks sewer lines and may cause overflows. You can place small amounts into your compost cart.
- Visit www.oaklandnet.com/FOG or call the EBMUD Environmental Services Hotline at (510) 287-1651.



Visit resource.stopwaste.org for questions about reuse, repair, recycling and safe disposal options.