

Have You Taken Advantage of Your Bulky Junk Services?

Curbside and Drop Off Appointments Available to All Oakland Renters.



Schedule your bulky services:

1. Annual bulky junk drop off
2. Annual curbside bulk pick up

Residents can schedule bulky service directly with WM and do not need landlord approval..

Call
1-888-WM-Bulky
or visit
OaklandRecycles.com/Bulky

Look for more information:

Recycle, compost, trash, & hazardous waste sorting guides and services

Oakland residents who live in apartments can directly schedule a drop off and a curbside pickup appointment without property manager approval at no additional cost.*

DROP OFF

Schedule an appointment to bring up to 4 cubic yards of bulky waste to the Davis Street Resource Recovery Complex in San Leandro.

CURBSIDE PICKUP

Schedule a convenient bulky curbside appointment, where you can set out up to 4 cubic yards of bulky waste plus a limited number of larger items like mattresses, TVs, and tires.

Call 1-888-WM-Bulky or visit OaklandRecycles.com/Bulky for more details and to make an appointment.

**Bulky pickup and drop off service are included in your property's trash rates.*



YOUR RECYCLING TEAM
WASTE MANAGEMENT
CALIFORNIA WASTE SOLUTIONS

250 Frank Ogawa Plaza, Suite 5301
Oakland, CA 94612

Para obtener una copia de este folleto, visita OaklandRecycles.com

Để lấy bản sao của tài liệu này, xin truy cập OaklandRecycles.com

有關此副本宣傳冊，請訪問
OaklandRecycles.com

Recycle Right - It's the Law

To slow the impacts of climate change, State law (SB 1383) requires everyone (including businesses) to sort their discards correctly.

Oakland Recycles offers a convenient reusable tote bag to collect your recycling in your unit and transport to the building's recycle cart or bin.



Don't throw those food scraps away, use a kitchen pail to collect them and just empty into the compost cart or bin. Request tote bags or kitchen pails for your whole building at www.oaklandrecycles.com/resources.



Trash, Compost & Bulky Drop Off & Collection Services

Waste Management of Alameda County, Inc. (WM)
510-613-8710



CALIFORNIA WASTE SOLUTIONS
Zero Waste Specialists

Recycling Service

California Waste Solutions
510-OAKLAND (625-5263)

Report Illegal Dumping

OAK311 - 510-615-5566
www.oaklandca.gov/services/oak311



City of Oakland

Recycling Hotline
510-238-SAVE (7283), recycling@oaklandca.gov

RECYCLE

回收 REICLAR TÁI CHẾ



COMPOST

堆肥 ABONO PHÂN HỮU CƠ



TRASH

垃圾 BASURA RÁC



New colored carts and bins are slowly being delivered in Oakland for SB 1383 compliance.

How do I recycle right?

- Empty out all food and liquid.
- Keep recyclables loose, do not bag.
- Only place the following items in recycle:



Recycle #1 (bottles), #2 (jugs), and #5 (tubs)



Empty Glass, Aluminum, Metal & Plastic Containers, Beverage & Soup Boxes, Clean Paper & Cardboard

How do I compost right?

- Do not place in plastic bags, including those labeled bioplastic or compostable.
- Only place the following items in compost:



Food Scraps, Non-coated/lined Food-Soiled Paper, Plant Debris, Untreated Wood

What goes into trash?

- State law prohibits compostables from being placed in trash.
- Only place non-recyclable and non-compostable items in trash.



Including compostable plastic bags.



Non-Recyclable, Non-Compostable, Non-Hazardous Materials

What do I do with extra recycling?

- Break down and bundle extra cardboard (under 3'x3') and place neatly next to recycle cart or bin.



Visit resource.stopwaste.org for questions about reuse, repair, recycling and safe disposal options.

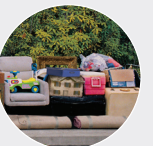
Reducing the 'ick' factor in sorting compost

- Place shredded paper or cardboard at bottom of containers
- Place food scraps in a paper bag first, then toss into green compost cart or bin
- Reduce food waste, only buy what you eat. Visit <https://stopfoodwaste.org> for tips.
- Request a kitchen pail for free! You may pick one up at WM's office at 172 98th Ave., Oakland, 8 am - 6 pm M-F.



What do I do with extra trash?

- Use the Bulky Junk Drop Off and Pickup Service at no extra cost. Call WM at 1-888-WM-Bulky or visit OaklandRecycles.com/Bulky to make an appointment.
- Contact your property manager to increase trash cart size if you have regular overflow in your trash cart or bin.



Follow these instructions to dispose of items that do not fit or belong in any cart or bin.

Household Toxic Waste

- Take hazardous waste to the Household Hazardous Waste (HHW) Facility at 2100 East 7th Street, Oakland. Limit is 15 gallons/125 pounds per vehicle.
- Call (800) 606-6606 or visit stopwaste.org/hhw for days and hours of operation.



Household Batteries & Used Motor Oil

- Put old household batteries in a sealed plastic bag on top of the recycle cart or bin.*
*Tape off all coin batteries.
- Put your Motor Oil Recycling Kit next to the recycle cart. Contact CWS for a free kit.



Fats, Oils, and Grease (FOG)

- Do not pour cooking oils, shortening, dairy products, sauces or salad dressings down the drain - it blocks sewer lines and may cause overflows. You can place small amounts into your compost cart.
- Visit www.oaklandnet.com/FOG or call the EBMUD Environmental Services Hotline at (510) 287-1651.

