

**Bicycle and Pedestrian Advisory Committee, Monthly Meeting****January 15, 2009, 5:30-7:30 p.m.*****Oakland City Hall: Hearing Room 4, Second Floor*****AGENDA**

Time	Item #	Topic	Topic Type *
5:30	1	Introductions, Appointment of Note Taker (5 minutes)	Ad
5:35	2	Approval of Meeting Minutes (consent item) (5 minutes) Vote on motion to adopt December 2008 minutes.	A
5:40	3	Oakland's Walkway Rehabilitation Program (25 minutes)—Eric Uddenberg, Architect with the City's Engineering Design and Right of Way Management Division, will talk about Oakland's existing walkway network, the backlog of maintenance, and recent rehabilitation projects.	I
6:05	4	Bikeway Projects Status Attachment (20 minutes)—Staff will update the committee on the status of bikeway projects under development and request input on which projects should be scheduled for design review.	A
6:25	5	Projects for FY 2009-10 TDA Article 3 Bike/Ped Funding Attachment (25 minutes)—The committee will review a long list of possible projects and provide input on the prioritization of projects for funding.	A
6:50	6	27th Street / Bay Place, Broadway to Grand Avenue, Bikeway Design Review Attachment (30 minutes)—The committee will review the striping plan and provide input.	A
7:20	7	Announcements, suggestions for next meeting topics	Ad

*** Topic Types:**

I=informational; A=action item; Ad=administrative

TSD Bikeway Projects Tracking

BIKEWAY PROJECT	Design	Feasibility	BPAC Review	AC Transit review	Community Outreach	Environmental clearance	Funded	City Council approval	Implementation
ACTIVE									
105th Ave, San Leandro to International	95%	✓	✓				✓	✓	2009
14th Street, Wood to Mandela	95%	✓	✓				✓	✓	2009
27th Street, MLK to Broadway	90%	✓		n/a	✓	✓		✓	2010
27th Street/Bay Place, Broadway to Grand	90%	✓	prelim	n/a	✓	✓	✓	✓	2009
38th Ave (MacArthur Blvd to E 12th St)	80%			n/a					tbd
40th Street, Emeryville border to MLK & Telegraph to Webster,	15%	✓	prelim	prelim	prelim				tbd
55th Street, Adeline to Telegraph	70%	✓						✓	2009
5th Ave, E10th to Embarcadero	70%	✓						✓	2009
Adeline St (Stanford Ave to Market St)	60%								tbd
Alcatraz Ave (Dover to College)	30%	✓					✓	✓	tbd
Broadway, 40th St to College Ave	70%	prelim							tbd
Broadway, College Ave to Keith	70%	✓			prelim				tbd
Camden St (Seminary Ave to Bancroft Ave)	95%	✓	✓	✓	prelim			✓	tbd
E12th, 2nd to 38th Ave	35%	in progress	prelim		prelim				tbd
Fruitvale, E12th to MacArthur	100%	✓	✓				✓		2010
Havenscourt (International to Bancroft)	30%	✓	✓	n/a	prelim		✓	✓	2009
MacArthur, Broadway to BART frontage road	35%	✓	prelim	prelim	prelim				2010
MacArthur, Park to Lincoln / Excelsior, Ardley to Kingsley	100%	✓	✓	✓	✓		✓		2009
Oakland Ave, I-580 to 29th Street	100%	✓	✓		✓		✓	✓	2009
Piedmont Ave (Broadway to Pleasant Valley Ave)	30%	✓						✓	tbd
San Leandro St (66th Ave to 73rd Ave)	90%	✓						✓	tbd
Stanford median crossing	90%	✓	✓	n/a	n/a	✓	✓	✓	2009
Telegraph, 20th to 16th (Uptown)	95%	✓	✓	n/a	✓	✓	✓	✓	tbd
Telegraph, 20th to Aileen	20%	in progress	prelim	prelim	prelim				tbd
W Grand Ave (Mandela Pkwy to Market St)	70%								tbd
Webster/Franklin, 14th St to 25th St	70%	✓							tbd

KEY

Design = % completed | [checkmark] = completed | n/a = not applicable
tbd = to be determined | BPAC = Bicycle Pedestrian Advisory Committee

TSD Bikeway Projects Tracking

BIKEWAY PROJECT	Design	Feasibility	BPAC Review	AC Transit review	Community Outreach	Environmental clearance	Funded	City Council approval	Implementation
RESTRIPING									
16th Ave Overpass (Embarcadero to E12th)	90%	n/a	n/a	n/a	n/a	n/a	✓	n/a	tbd
3rd Street (Brush to Mandela/7th St)	50%	n/a	n/a	n/a	n/a	n/a	✓	n/a	tbd
73rd Ave (MacArthur to International)	75%	n/a	n/a	n/a	n/a	n/a	✓	n/a	tbd
8th Street (Broadway to Jefferson)	90%	n/a	n/a	n/a	n/a	n/a	✓	n/a	2009
Bancroft, 42nd-66th	75%	n/a	n/a	n/a	n/a	n/a	✓	n/a	tbd
Bancroft, 82nd-98th	75%	n/a	n/a	n/a	n/a	n/a	✓	n/a	tbd
Broadway (MacArthur to 25th)	75%	n/a	n/a	n/a	n/a	n/a	✓	n/a	tbd
Embarcadero Bay Trail (Oak/2nd to E7th/Fruitvale)	35%	n/a	n/a	n/a	n/a	n/a	✓	n/a	tbd
Fruitvale, E12th to city of Alameda	0%	n/a	n/a	n/a	n/a	n/a	✓	n/a	tbd
Grand Ave (Market to San Pablo)	0%	n/a	n/a	n/a	n/a	n/a	✓	n/a	2009
Grand Ave (San Pablo to Telegraph)	0%	n/a	n/a	n/a	n/a	n/a	✓	n/a	tbd
Grand Ave (Telegraph to Webster)	90%	n/a	n/a	n/a	n/a	n/a	✓	n/a	2009
Grand Ave (Webster to El Embarcadero)	75%	n/a	n/a	n/a	n/a	n/a	✓	n/a	tbd
MacArthur Blvd (Lincoln to Midvale)	95%	n/a	n/a	n/a	n/a	n/a	✓	n/a	2009
MacArthur Blvd (Lakeshore to Park)	100%	n/a	n/a	n/a	n/a	n/a	✓	n/a	2009
Mandela Parkway (3rd St to Horton)	0%	n/a	n/a	n/a	n/a	n/a	✓	n/a	tbd
Market, W MacArthur to 57th St	40%	n/a	n/a	n/a	n/a	n/a	✓	n/a	tbd
Santa Clara (Lake Park to Vernon)	80%	n/a	n/a	n/a	n/a	n/a	✓	n/a	2009
Telegraph Ave (Aileen to Woolsey)	75%	n/a	n/a	n/a	n/a	n/a	✓	n/a	tbd
West Street (MacArthur to Grand)	75%	n/a	n/a	n/a	n/a	n/a	✓	n/a	tbd

KEY

Design = % completed | [checkmark] = completed | n/a = not applicable
tbd = to be determined | BPAC = Bicycle Pedestrian Advisory Committee

**Potential projects to be submitted for
FY 09-10 Transportation Development Act (TDA) Article 3 funding**

(in alphabetical order)

12th Street, bike lanes and trails under the new bridge (Measure DD match)

27th St / Bay Place bikeway (Grand Ave to Broadway) (shortfall)

40th Street bikeway (Webster St to Yerba Buena) civil engineering / design

Bike actuation at traffic signals

Citywide Curb Ramp Program

E12th Street bikeway (2nd Ave to Fruitvale Ave) civil engineering / design

Mountain Blvd pedestrian path construction (Park Blvd to Ascot Dr)

On-call contract for bike network striping plans

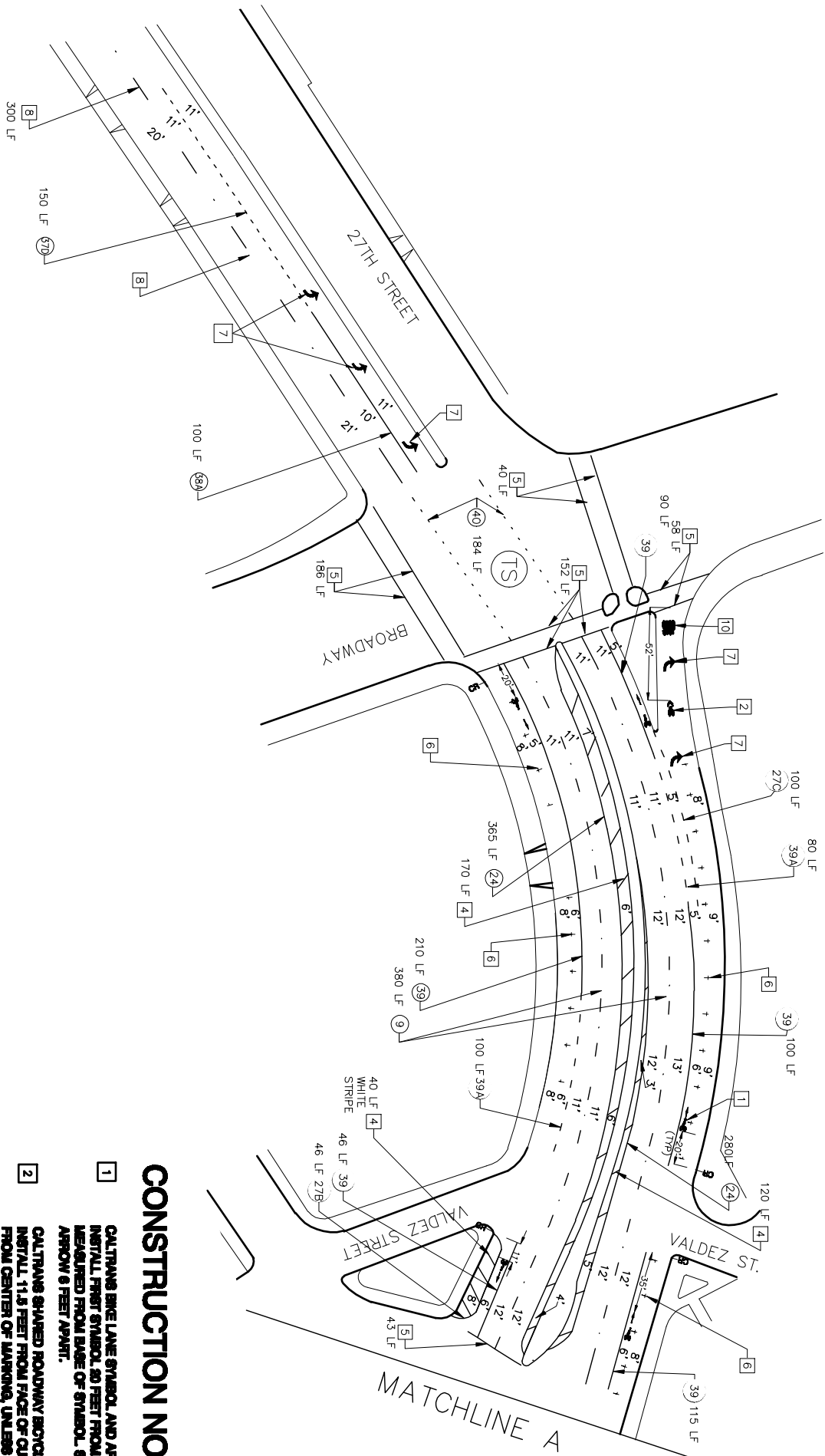
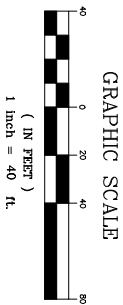
Park Blvd path design (Leimert to Monterey Ave)

Pedestrian countdown signal heads

Streetscape projects match

Walkway rehabilitation

Waterfront Trail (tbd)



CONSTRUCTION NOTES

- 1 CALTRANS BIKE LANE SYMBOL AND ARROW.
INSTALL FIRST SYMBOL 20 FEET FROM CURB RETURN
MEASURED FROM BASE OF SYMBOL. SPACE SYMBOL AND
ARROW 6 FEET APART.
- 2 CALTRANS SHARED ROADWAY BIKE LANE.
INSTALL 11.5 FEET FROM FACE OF CURB, AS MEASURED
FROM CENTER OF MARKING, UNLESS OTHERWISE NOTED.
INSTALL FIRST SYMBOL 20 FEET FROM CURB RETURN, AS
MEASURED FROM BASE OF MARKING, UNLESS OTHERWISE
NOTED.
- 3 INSTALL CA MUTCD BIKE DETECTOR PAVEMENT
MARKING 1 FOOT FROM CROSSWALK.
- 4 INSTALL 4" STRIPING EVERY 10 AT 155 DEGREE ANGLE.
YELLOW UNLESS OTHERWISE SPECIFIED.
- 5 INSTALL 12" WHITE CROSSWALK LIMIT LINE.
- 6 RESTRATE PARKING TEE AT 7 FEET FROM CURB UNLESS OTHERWISE
NOTED. CONSULT RESIDENT ENGINEER FOR SPACING.
- 7 INSTALL TYPE IV ARROW.
- 8 REMOVE CONFLICTING STRIPING BY SAND BLASTING.
- 9 REMOVE CONVENED LEFT AND RIGHT TYPE IV ARROW.
- 10 INSTALL PAVEMENT MARKINGS AS SHOWN

100% DESIGN
FOR REVIEW ONLY
LINE 2807

PROJECT NOTES

DETAILS 8, 24, 27B, 27C, 37D, 38A, 39, 39A, BIKE LANE SYMBOL WITH ARROW, SHARPPOWS,
CROSSWALKS, LIMIT LINES AND ALL PAVEMENT MARKINGS AND LEGENDS SHALL BE
THERMOPLASTIC.

ALL CROSSWALK (W) AND LIMIT LINES (WLL) SHALL BE 12" WIDE WHITE STRIPES EXCEPT AS
NOTED. CROSSWALK WIDTH SHALL BE 10' ON CENTER UNLESS OTHERWISE SHOWN ON PLANS
OR AS DIRECTED BY THE ENGINEER.

ALL STRIPING DETAILS AND PAVEMENT MARKINGS SHALL CONFORM TO CALTRANS STANDARDS
OR AS DIRECTED BY THE ENGINEER.

REMOVE CONFLICTING STRIPING.

STRIPING TO BE REPLACED IN PLACE DOES NOT NEED TO BE REMOVED, AS DIRECTED BY
ENGINEER.



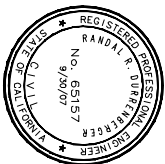
555 12th Street, Suite 1230
Oakland, California 94607

Kimley-Horn
and Associates, Inc.
Tel. No. (510) 825-0712 © 2009
Fax No. (510) 825-0714



CITY OF OAKLAND
27TH STREET

SUPERVISING TRANSPORTATION ENGINEER



CIVIL ENGINEER	No.	DATE	BY	REFERENCE
Randall R. Durnberger				
PCE NO. 65157 EXP. 09/30/07				
CHECKED BY: RDD				
DESIGNED BY: EKC				
DRAWN BY: RJD				

BROADWAY TO
GRAND AVE.
27th STREET/BAV PLACE
BIKEWAY SIGNING AND STRIPING PLAN

SCALE: 1" = 40'
HOR.
VERT.
DATE: NOV.18, 2008

SHEET NO.
01
OF 02

