



**Oakland City Hall: Hearing Room 4, Second Floor
August 21, 2008**

AGENDA: Bicycle and Pedestrian Advisory Committee, Monthly Meeting, 5:30-6:30 p.m.

Time	Item #	Topic	Topic Type *
5:30	1	Introductions, Appointment of Note Taker (5 minutes)	Ad
5:35	2	Approval of Meeting Minutes (consent item) (5 minutes) Vote on motion to adopt last month's minutes.	A
5:40	3	TLC-Funded Fruitvale Streetscape Project (30 minutes)—David Ralston from CEDA's Redevelopment Division will share drawings of the proposed design for the Fruitvale Avenue Streetscape Project and take comments from the committee.	A
6:10	4	Downtown eLocker Usage Report Attachment (10 minutes)—Jennifer Stanley will share information on the use, since installation, of the two sets of electronic bicycle lockers installed adjacent to the 12 th and 19 th Street BART stations.	I
6:20	5	Announcements, suggestions for next meeting topics (10 minutes)	Ad

AGENDA: Special Joint Meeting, 6:30-8:30 p.m.

Tri-City Bicycle and Pedestrian Advisory Committee (Cities of Berkeley, Emeryville, and Oakland)

Time	Item #	Topic	Topic Type *
6:30	1	Welcome (5 minutes)—Jonathan Bair, Oakland BPAC Chair	Ad
6:35	2	Introductions (10 minutes)	Ad
6:45	3	Review and update items developed at February Tri-City BPAC meeting (30 minutes): Each of the represented committees to provide an update on their part of the items.	I
7:15	4	Priority items common to the Tri-City BPAC (30 minutes) <ul style="list-style-type: none"> • Bay Bridge Path Approach—Peter Schultze-Allen, Emeryville • Tunnel Road/Hwy 13 access—Jason Patton, Oakland • AC Transit Bus Rapid Transit—Eric Anderson, Berkeley 	I
7:45	5	Develop path forward for key priority items (20 minutes)	A
8:05	6	Next steps and next meeting	A

* **Topic Types:** I=informational; A=action item; Ad=administrative

**City of Oakland
Final eLocker Usage Report
April-June 2008**

The tables below summarize usage data for both sets of eight, TFCA-funded electronic bicycle lockers (eLockers) installed adjacent to the 12th & 19th Street BART Stations in downtown Oakland. (The eLockers serving the 12th Street Station are installed on 14th Street and those serving the 19th Street Station are installed on 20th Street.)

Usage at both locations is now fairly equal, a change from the last reporting period where the usage at 20th Street was significantly higher. Usage at both locations was, with a spike in April probably attributable to the sunny weather and rising gas prices.

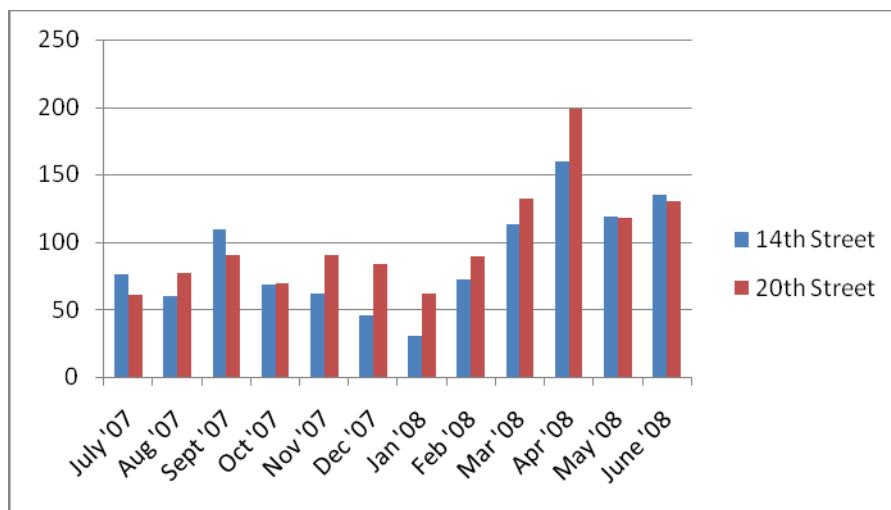
Table 1: Locker Usage Summary, April 1-June 30, 2008

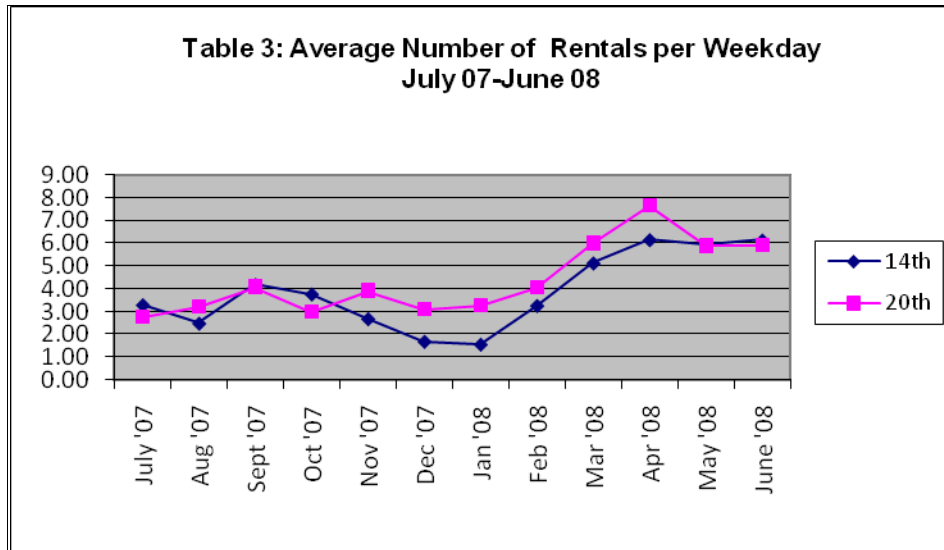
	14th Street	20th Street
Number of days in time period	91	91
Total number of rentals	414	447
Total revenue collected	\$61.70	\$96.04
Average revenue per rental	\$0.15	\$0.21
Average number of rentals/day	4.6	4.9
Average rental length	6.8 hours	8.6 hours
Average number of rentals/day excluding weekends	6.1	6.5

Rental Duration

At 14th Street, 75% of rentals lasted between 5 minutes and 10 hours, with 17% of rentals lasting 10 hours or more, similar to the last reporting period. At 20th Street, 62% of rentals lasted between 5 minutes and 10 hours, with 34% of rentals lasting 10 hours or more, slightly higher than in the last reporting period. These durations continue to suggest that the eLockers are being used, principally, to support commuting for work purposes rather than running errands locally, which would be expected to occupy fewer hours.

Table 2: Number of Rentals by Month, July 2007-June 2008





As shown in Tables 2 and 3 above, the increase in the number of rentals at 20th Street has tapered off from the steady increase seen previously. Table 3 shows that, for weekdays in April the facility at 20th Street was operating at near capacity for the first time since the lockers were installed. Table 4 below illustrates the general increase in usage at both locations and gives an overview of usage over time.

Table 4: Average Locker Usage Summary Comparison by Reporting Period

Average Type	June 2006-May 2007	June-September 2007	October 2007-January 7,	January 7-2008-March 31, 2008	April 1-June 30, 2008
14th Street					
Average number of rentals/day	1.7	2.6	1.8	2.5	4.6
Average number of rentals/day excluding weekends	n/a	3.7	2.7	3.4	6.1
Average rental duration (overall)	8.5 hours	7.25 hours	6.75 hours	7.5 hours	6.8 hours
20th Street					
Average number of rentals per day	n/a	2.4	2.5	3.3	4.9
Average number of rentals/day excluding weekends	n/a	3.0	3.6	4.6	6.5
Average rental duration (overall)	n/a	9.5 hours	10 hours	8.75 hours	8.6 hours

Locker Security Issues

One of the lockers at 20th Street was broken into over the weekend of May 17. This is the first time any eLock Technologies manufactured locker had been compromised since their initial deployment six years ago. A bike and some bike gear that had been left in the locker for several days were stolen. As described by eLock in an email to the East Bay Bicycle Coalition

listserv (which was also sent to current BikeLink cardholders in the area): “The vulnerability is isolated to a specific component within lockers produced during a single manufacturing cycle. Within an hour of when the breach was reported, we worked closely with the cardholder, BART, and the City of Oakland. Our crew was dispatched immediately to reinforce lockers to resist this method of attack.”

Though not required to do so—eLocker users assume risk when they purchase a BikeLink card—eLock gave the locker user \$400 to remunerate her for the loss of her bike and gear. The company takes the security of the locker system very seriously, and is continuously working to improve the design and functionality of the lockers and card interface. This break-in provided some good feedback to the company as to a vulnerability that needed to be addressed. Fortunately, it was not difficult to address and all 16 lockers were upgraded to prevent the same method of entry.

This is the last usage report to be submitted to TFCA, pursuant to Project #04R26. For questions about this report, please contact Jennifer Stanley, Bicycle & Pedestrian Facilities Coordinator, at jstanley@oaklandnet.com or (510) 238-3983.

*Submitted to Avra Goldman, TFCA, via email only
July 2, 2008*