

Oakland Measure DD Public Art Program 2011

Public Art Program, Cultural Arts and Marketing, City
Administrator, Office of Economic and Workforce
Development

Staff:

- Kristen Zaremba, Senior Public Art Project Manager
- Steven Huss, Cultural Arts Manager



**City of Oakland Cultural Arts & Marketing
Public Art Program**

Completed Projects: Measure DD Program

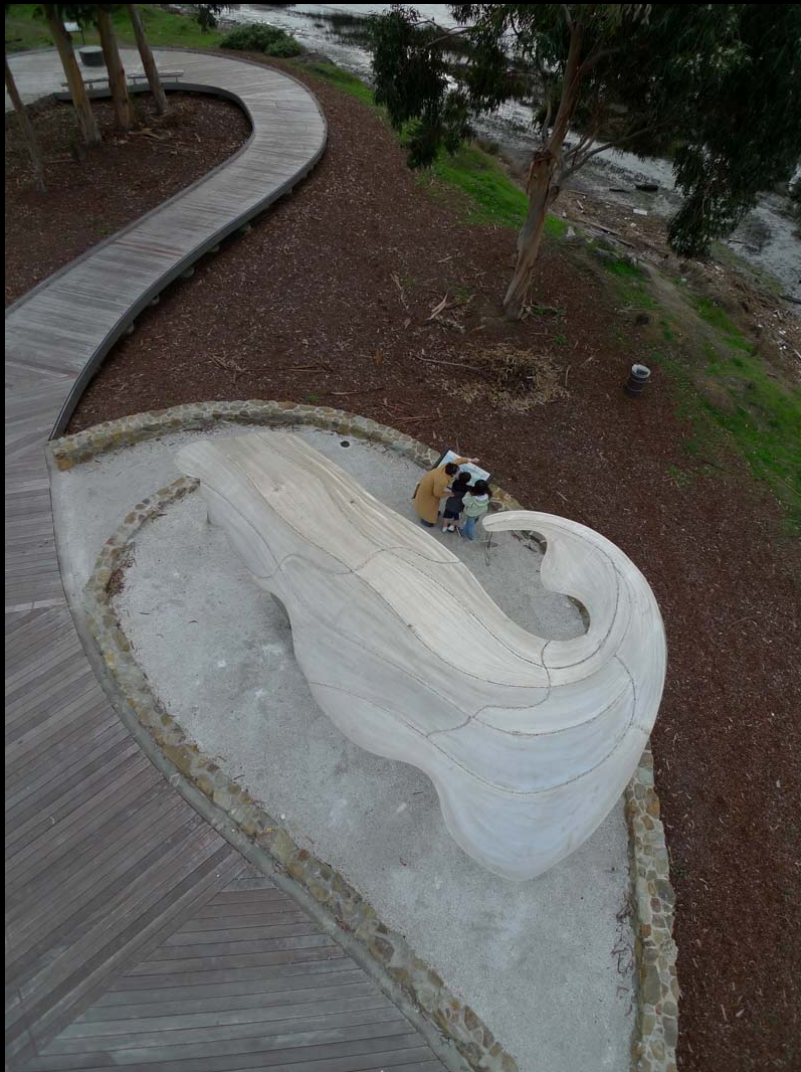
Studio One: Cork Marcheschi



Union Point Park: Ned Kahn



66th Avenue Gateway: Fernanda D'Agostino and Valerie Otani



Waterfront Trail Marker (Prototype): Mildred Howard



Fairyland: L. Altman, R. Jennings, D. Schmitt, B. Stremaska



East Oakland Sports Center: Dan Galvez and Jos Sances



Watershed Markers: Wowhaus (Scott Constable and Ene Osteraas Constable)



Rockridge Temescal Greenbelt: Mark Brest van Kempen – Partially funded by Measure DD; separate from % for art allocation



Rockridge-Temescal Greenbelt Public Art Dedication & Walking Tour

Sunday, December 13, 2009
11:00 am – 12:30 pm

Celebrate the work of Oakland
artist Mark Brest van Kempen at
the community dedication of
VIEWS OF THE GREENBELT.

The dedication event starts at the art sculpture podium adjacent to the DMV parking lot (5300 Claremont Avenue) at 11:00 AM.

Enjoy a brief walking tour of select sculptures with the artist, ending in light refreshments at Hardy Park.

This public art project, commissioned by the City of Oakland's Public Art Program, uses a combination of sculptural viewing devices, strategically placed sculptures of native flora and fauna, and interpretive signage to focus viewers' attention on the history and ecology of the Rockridge-Temescal Greenbelt and Temescal Creek. The work is designed to visually and conceptually unify the different sections of the Greenbelt.

Funding for this project comes from a variety of sources including Measure DD, the Oakland Trust for Clean Water & Safe Parks, the Oakland Public Art Program, the Oakland ADA Programs Division, and Friends of the Rockridge-Temescal Greenbelt. This project is authorized by the City of Oakland's Public Art Ordinance, commonly referred to as the "Percent for Art" Ordinance, which requires the allocation of 1.5 percent of municipal capital improvement project costs for public art.



CITY OF OAKLAND
PUBLIC ART
PROGRAM



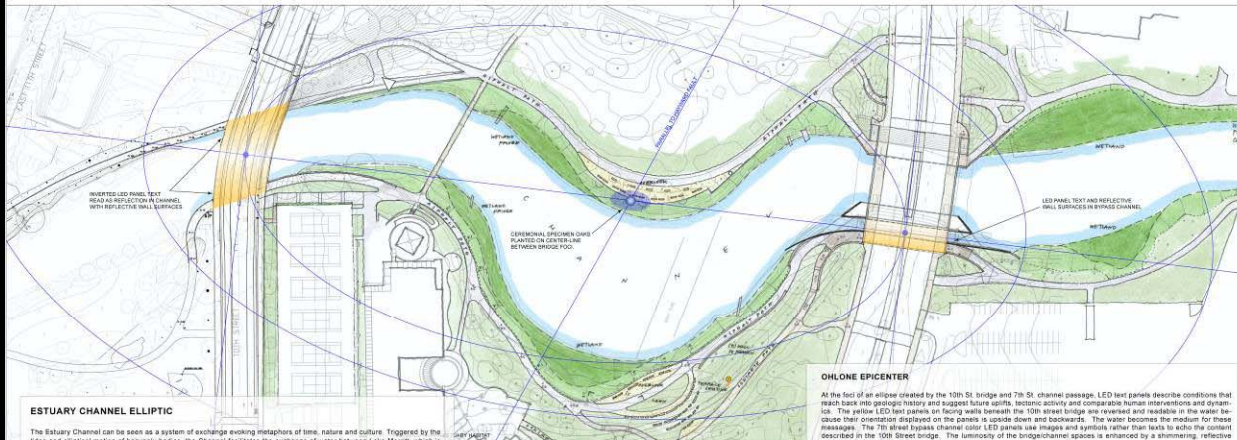
For more information on the project, please contact Kristen Zarembo, Public Art Program, City of Oakland @ 238-2155 / kzarembo@oaklandnet.com / 1 Frank H. Ogawa Plaza, 9th floor, Oakland, CA 94612, Public Art Program (510) 238-2155 or (510) 238-4949, (fax) 238-6341. For more information about the Oakland Public Art Program, go to www.oaklandculture.org

Measure DD Projects in Progress: Series B

Planning+ Design Team Collaboration

LM-Estuary Channel- John Roloff + Lewis De Soto

ESTUARY CHANNEL ELLIPTIC - OHLONE EPICENTER



ESTUARY CHANNEL ELLIPTIC

The Estuary Channel can be seen as a system of exchange evoking metaphors of time, nature and culture. Triggered by the tide and elliptical motion of heavenly bodies, the Channel facilitates the exchange of water between Lake Merritt, which is a collection basin for the ground water and aquifers of much of Oakland's terrain, and the San Francisco Bay, and by extension the Pacific Ocean; the channel itself can be seen as a gigantic stock that evokes both local and global dynamics of nature and culture. After reemerged by geologic forces deep below the site. These dynamics are watermarked by the tide, a cycle of ebb and flow, commensurate with the Ohlone creation myths, and references to larger cycles of change in this way these projects harness to privilege and push towards the future. These metaphors are introduced in the concepts and proportions of each element which are seen historically as creating a synergistic whole.



10TH ST. BRIDGE - INVERTED YELLOW LED PANELS/LUMINOUS WALLS

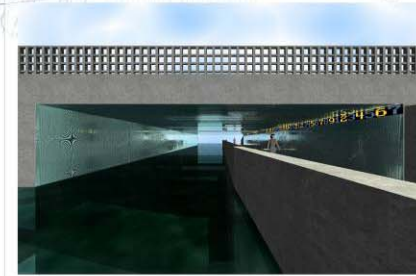


CEREMONIAL OAKS - ELLIPTICAL PLANTER

OHLONE EPICENTER

At the foot of an epicenter created by the 10th St bridge and 7th St channel passage, LED text panels describe the conditions that reach back into geologic history and suggest future uplifts, tectonic activity and comparable human interventions and dynamics. The yellow LED text panels on facing walls beneath the 10th street bridge are reversed and readable in the water because their orientations displayed on the panels is upside down and backwards. The water becomes the medium for these messages. The 7th street bypass channel color LED panels use images and symbols rather than text to echo the content described in the 10th Street bridge. The luminosity of the bridge/channel spaces is enhanced by a shimmering, reflective coating of glass micro-shards in a transparent matrix.

Along the centerline between the two bridge foot are planted two unadorned ceremonial Oaks that speak to the human origins of Oakland. Around the circumference of the elliptical planter is an ancient Ohlone story, a shadow of a tale about a great flood and the arrival of humanity in this area. These central oaks, like the foot of the atypical play of the tides and the dynamism of an earthquake, relate to the story of an ancient flood and to one that may return, as a result of global warming.

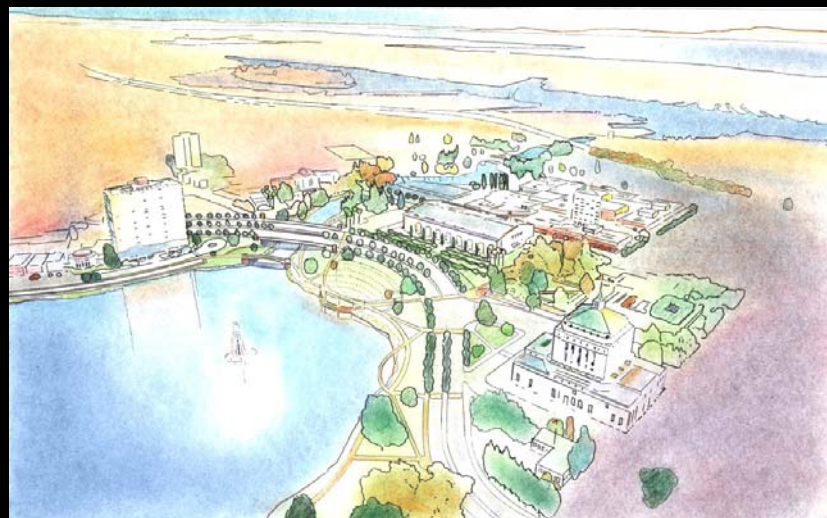
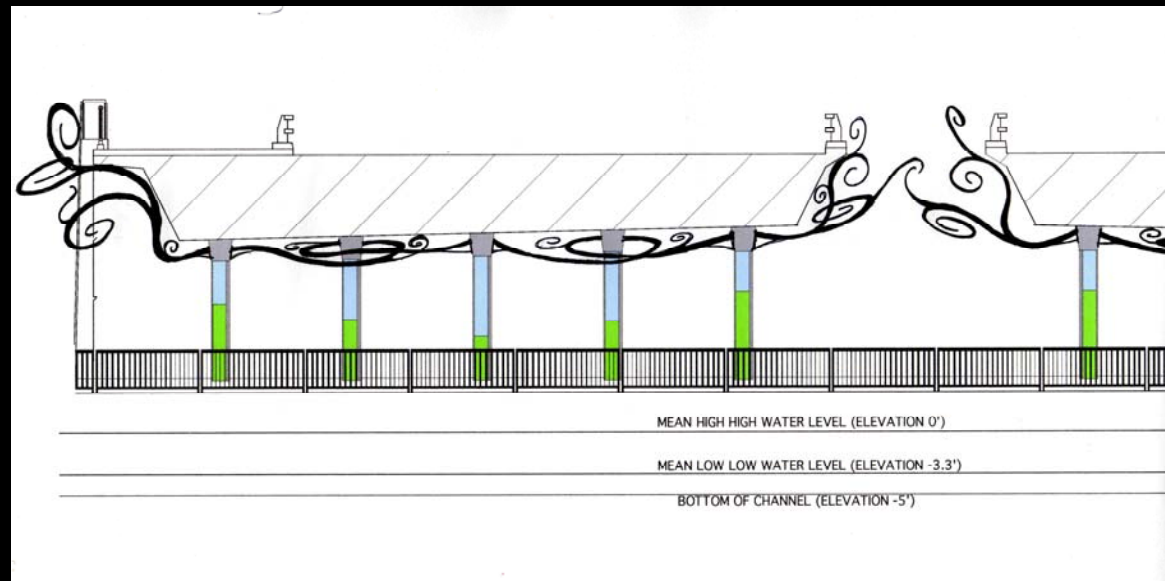


7TH ST. BYPASS CHANNEL PASSAGE - COLOR LED PANEL/LUMINOUS WALLS & CEILING



Projects in Progress: Series B

12th Street Improvements- Todd Blair, Alex Ismerio + John C. Rogers



Projects in Progress: Series B

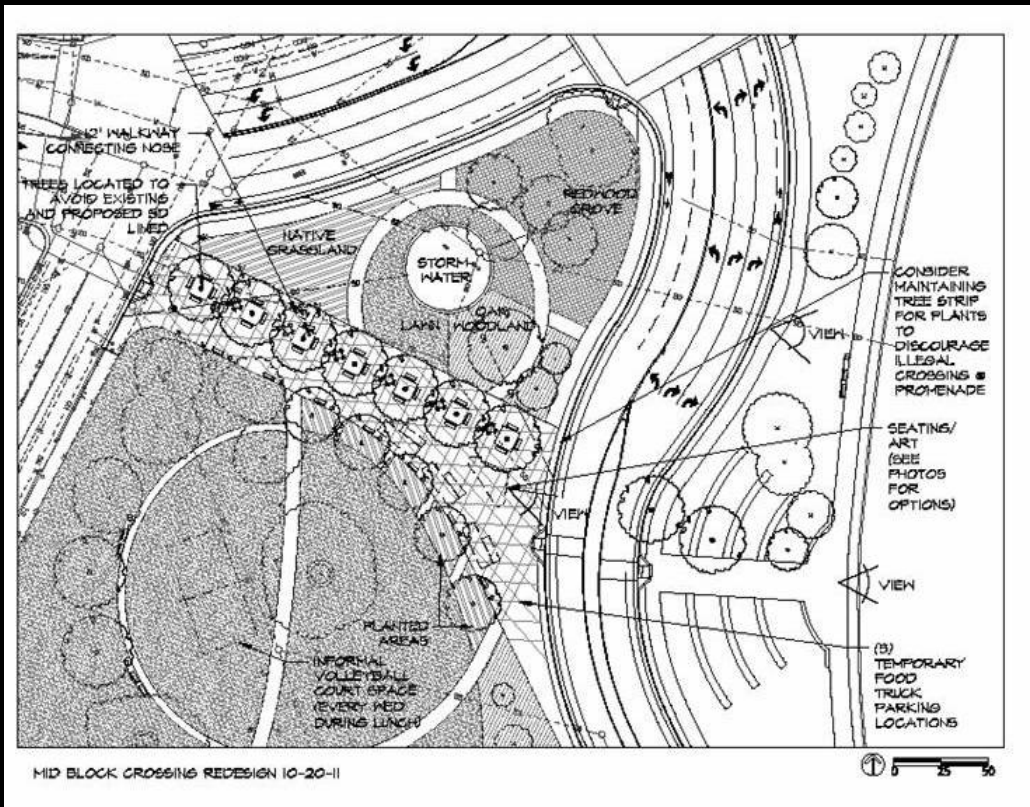
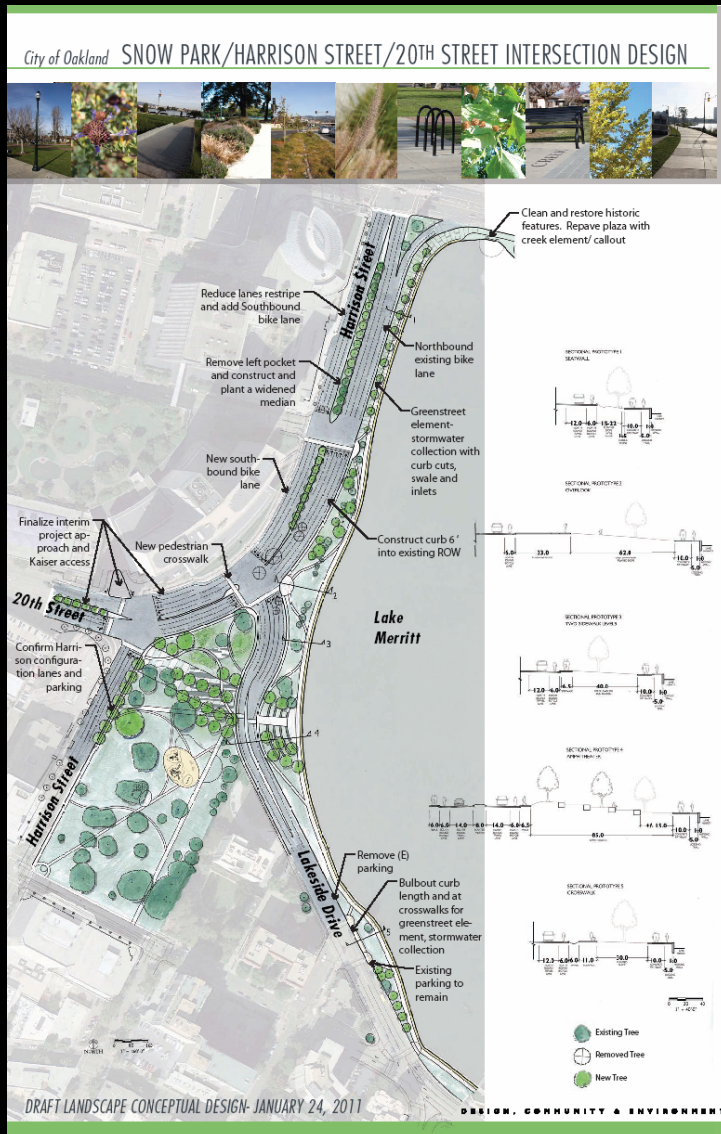
Gates for the Gardens at Lake Merritt, artist Shawn Lovell



Measure DD Planned Projects: Series B

20th/Harrison/ Lakeside (Snow Park)

Artist Selection Spring 2012



Measure DD Planned Projects: Series C

Lake Merritt Earthwork and 1 Additional Project TBD



Measure DD Planned Projects: Series C

Estuary Park

