

2" x 2" x 14 GAUGE SIGN POST
(SIZE POST TO MEET
SPECIFIED SIGN HEIGHT)



7' MIN.

SECURE POST TO BASE USING 3/8"
ZINC PLATED DRIVE RIVETS ON TWO
ADJACENT SIDES. SECURE BASE TO
SIDEWALK USING FOUR 1/2" ZINC
PLATED ANCHOR BOLTS. SEE
SURFACE MOUNTED BASE DETAIL.

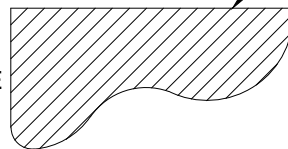
EMBED POST
INTO FULL
LENGTH OF
BASE SLEEVE

FACE OF CURB

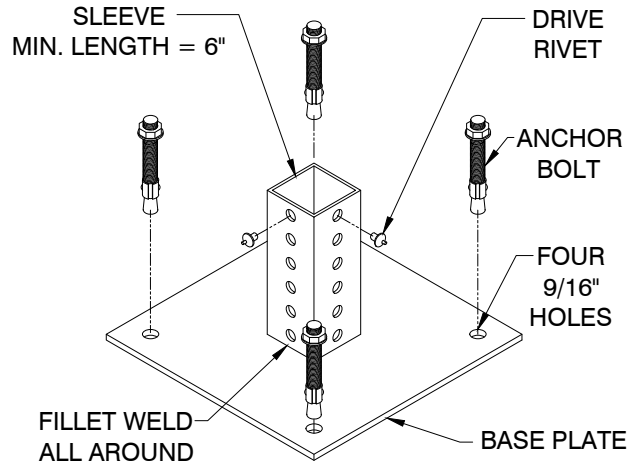
18" MIN.

TOP OF
SIDEWALK

SQUARE BASE WITH
2-1/4" x 2-1/4" x 12 GAUGE SLEEVE
WELDED TO 10" x 10" x 1/4" BASE PLATE
SEE SURFACE MOUNTED BASE DETAIL



UNDERGROUND
OBSTRUCTION.
SEE NOTE 1



SURFACE MOUNTED BASE DETAIL

NOTES:

1. Surface mounted sign post bases may be installed where there are underground obstructions that are incompatible with standard sign post anchors (e.g. non-compliant basements or shallow utilities) and where these obstructions cannot be avoided by adjusting the sign post location.
2. Surface mounted sign post bases may only be mounted to rigid pavement (i.e. portland cement concrete).
3. The standard sign post detail (SD-1) should be used instead for cases not mentioned above.

NOT TO SCALE



CITY OF OAKLAND

DEPARTMENT OF TRANSPORTATION | SAFE STREETS DIVISION
BICYCLE & PEDESTRIAN PROGRAM
250 FRANK H. OGAWA PLAZA, SUITE 4344 * OAKLAND CA, 94612
(510) 238-3466 * FAX (510) 238-7415

**SURFACE MOUNTED
SIGN POST DETAIL**

SIGNAGE DETAILS

SCALE: NTS

DWG. NO.

DATE: MAR 2024

SD-2