

# Verdese Carter Park Notes

## Virtual Community Meeting 1: Vision

October 9, 3:00 – 4:30 pm

### EVENT DESCRIPTION:

A virtual community meeting was hosted through Zoom in the afternoon with the following goals:

- Inform the community of the project understanding.
- Review an analysis of the site.
- Understand the project goals and vision from the voice of the community.
- Break out into focus groups to understand the communities needs based on four key topics of discussion:
  - Access and circulation
    - Are all areas of the park easy to access? *For example, the baseball field, club house, community garden, playground, picnic area, basketball court, park entry points.* What are the issues and how can we improve them?
    - If you could make one change to improve access to the park what would it be? Please locate it on the map.
  - Site elements
    - Which site elements are important to incorporate in the site plan? *For Example, planting, trees, tables, chairs, lighting, gardens*
  - Active experience
    - What activities do you enjoying doing the most at the park? How can the design improve or enhance your experience?
    - What activities would you like to do at the park that you cannot currently do?
  - Passive experience
    - What type of events would you like to see hosted at the park?
    - What opportunities of community expression would you like to see at the park? Ex: mural, art sculpture, pavement patterns, etc.

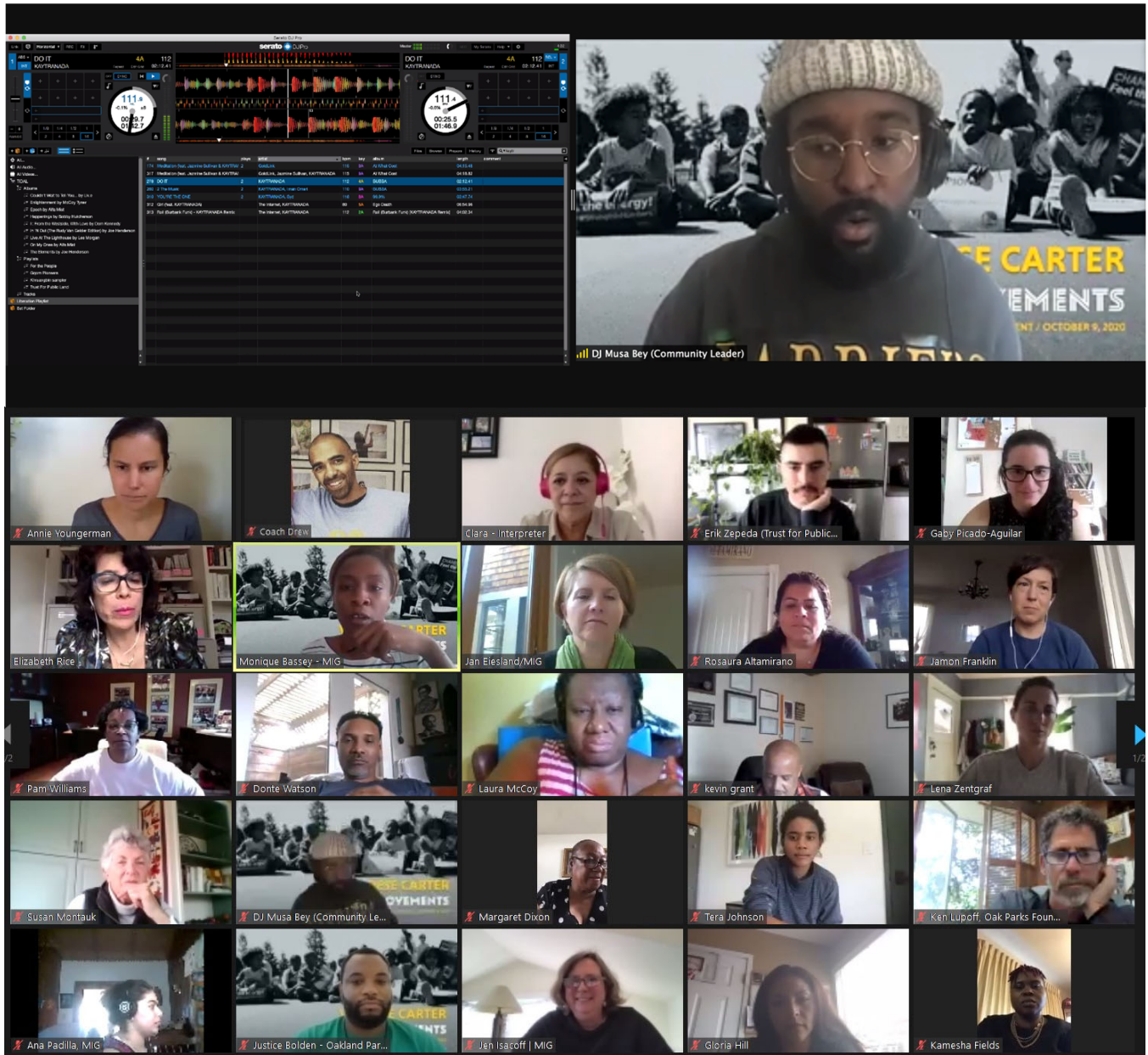
### TEAM:

Oakland PAL	City of Oakland Parks and Recreation and Youth Development	Oakland Parks and Recreation Foundation	Community Leaders	The Trust For Public Land	MIG	Interpreter
Officer Hill	Justice Bolden	Ken Lupoff	Kevin Grant, Laura McCoy, Marquita Price, DJ Musa Bey	Annie Youngerman, Erik Zepeda-Flores	Monique Bassey, Jan Eiesland, Jen Isacoff, Ana Padilla*	Clare and Elizabeth

## AGENDA:

- DJ Musa Bey // Zoom Polling
- Welcome and Introductions // Large Group
- Vision Together // Mentimeter
- Let's Design Together // Mural // Breakout Groups
- What we heard...Next Steps? // Large Group

TOTAL: 44 Participants



## COMMUNITY RESULTS

The Staff started the interactive portion of the meeting asking the community questions related to vision and how they use the park.

## VISION TOGETHER

### Here is what we heard:

- Providing community programming related to sports and arts
- Remaining a safe and clean park
- Embrace the village
- Being accessible to all especially those living here for years.
- Continuing to support the Police Activities League visions and efforts.
- More activities! Multi generational activities
- Provide programing for kids and seniors
- Having fun education games at the park, there are many kids in the neighborhood.

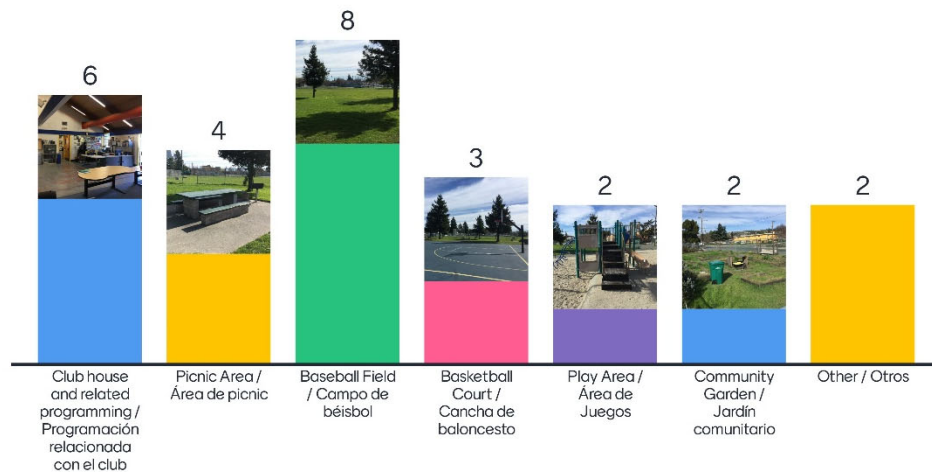
**Verdese Carter Park will remain true and authentic to the community by // Verdese Carter Park seguirá auténtico si:**



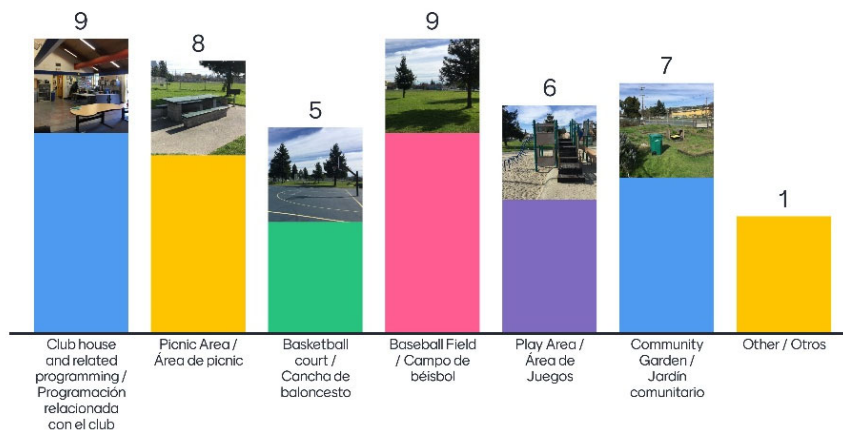
**Park Use:**

- General feedback:** The community gathers the most at the clubhouse, basketball court, grass field, and picnic area. Generally, the community responded with all of the areas within the park need the most improvement. Areas include: Clubhouse, Picnic, Basketball courts, grass field, play area, and garden. The community desired all improvements but the one that had the most votes was to enhance the site furnishings within the park.

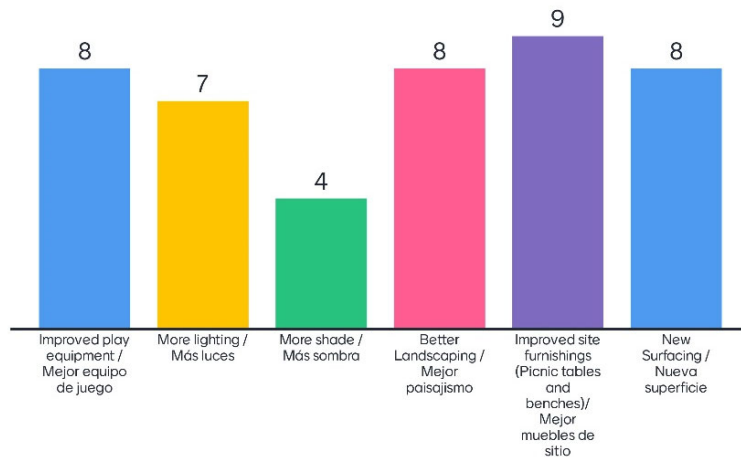
**Where do you play/gather most at the park? // ¿Dónde juegas o pasas tiempo más en el parque?**



**What areas within the park need the most improvement? // ¿Qué áreas dentro del parque necesita mejoramiento?**



## What design ideas would most improve the park experience? // ¿Qué ideas de diseño mejorarían la experiencia del parque?



## What would make you want to use the park more often? (please be specific) // ¿Qué te haría querer usar el parque con más frecuencia?

Lights	Safer field surface to play on (grass or artificial).	Safety is a big issue. We have cars and big wheelers go into the park and do donuts. People gather to drink and smoke. More trash cans and need to be kept clean. Need a barrier in the main entrance to avoid car entrance and lock big entrance gates.
Chess Tables	A track for walking , the field should be removed	Building a new recreation center presents an opportunity to provide an indoor space for various types of users including; youth, teens, adults, and seniors. A gym, game room, computer lab, multi-purpose room, kitchen, & outdoor sports field is needed
lights especially during daylight savings, park cleaned more often		



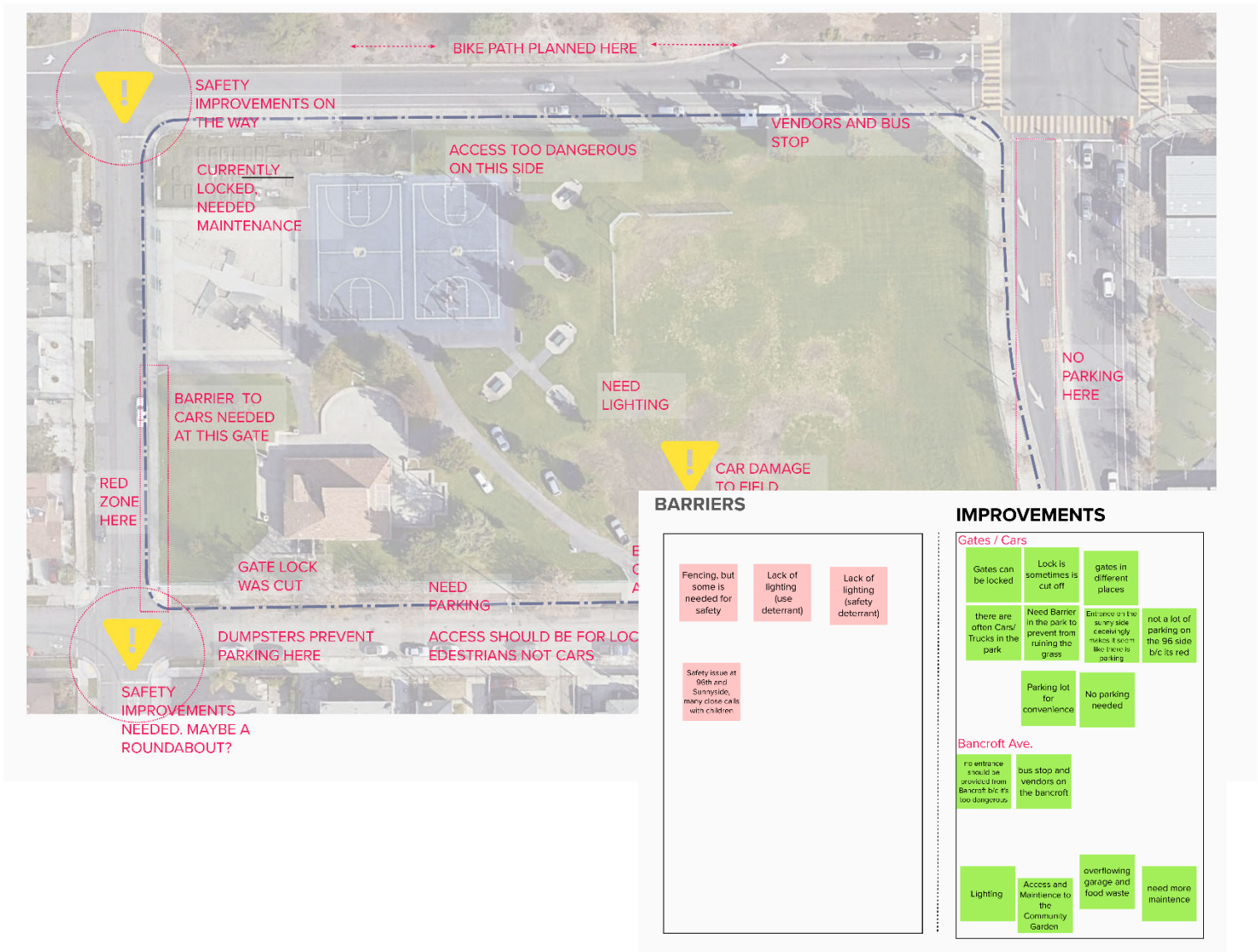
## LET'S DESIGN TOGETHER (BREAK OUT GROUPS)

Staff transitioned the meeting into three zoom breakout rooms. Each room was supported by staff and assigned community leaders led the discussion together. There was a total of 40 minutes spent on the following topics: access and circulation, site elements, active experiences, and passive experiences.

Here is what we heard:

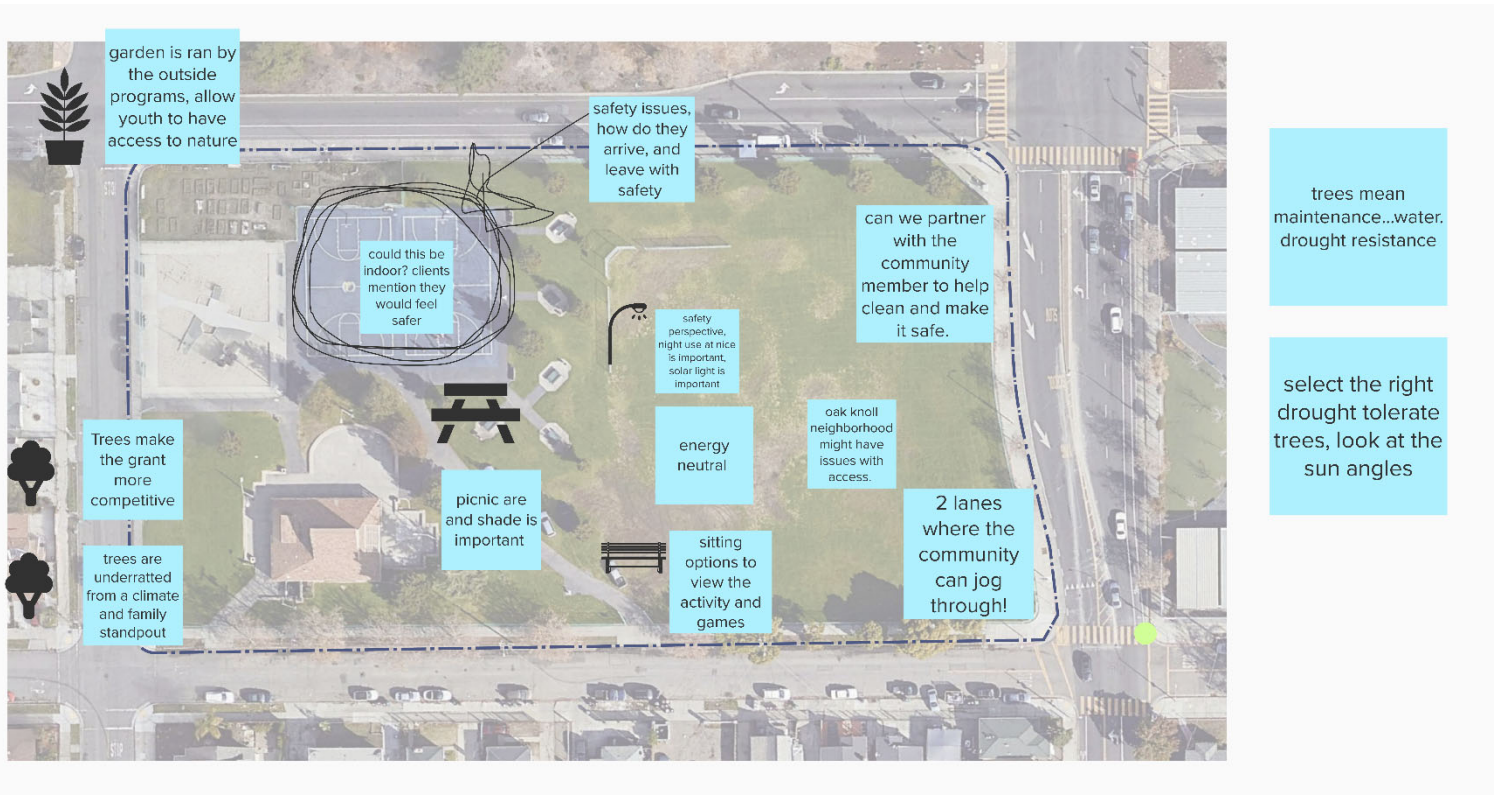
### Access and circulation

- **Barriers:** lack of lighting within the park, fencing with holes, no parking, limited entries, cars driving and parking in the park, reckless driving on Bancroft & 96<sup>th</sup>, safety at night, and unlevelled sports field.
- **Improvement/Opportunity Areas:** additional entrances into park, cross walk improvements, add lighting, secure fence and gates, extend park hours.



## Site elements

- **Improvements Needed:** seating options to view activity and games, picnic area with shade, it is too hot, trees and landscaping – native and drought tolerant, trash/waste bins and management, drinking fountain, walking and jogging path, lighting, mural and art, new surfacing, better play equipment, and restroom.

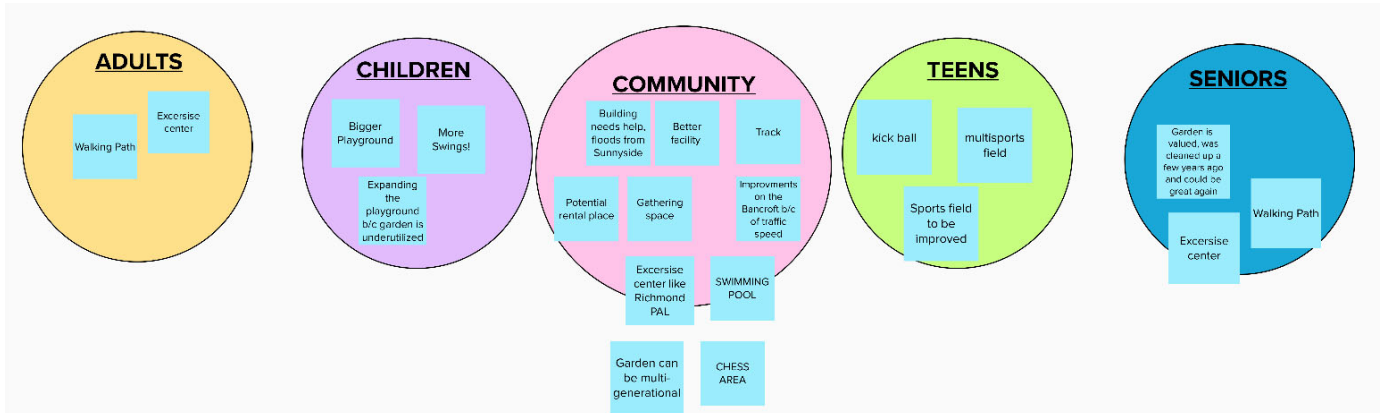


## Active and Passive Experiences:

- **Adults:** walking path, exercise center, indoor gym, place to gather and meet, arts and craft, cooking class, exercise class
- **Adults:** community garden, walking path, exercise center/fitness equipment, play chess, garden seating for seniors, place to gather and meet, arts and craft, cooking class, exercise class
- **Children:** expand playground, more swings, ride bikes and scooters, more games and equipment for toddlers, indoor gym
- **Teen:** multi-sports field, kickball, skateboarding ramp



- **Community:** track / walking path, traffic improvements, gathering spaces, exercise center, better facility, host a gathering, special events indoor and outdoor, multi-sports field, mobile community market, picnic area, computer hub





# Verde Carter Park Visioning Event Notes:

In-person tabling event 1 with TPL/PAL

Verde Carter Park, October 20, 2-5pm

Three boards were displayed in the park, and staffed with one TPL staff member, two UC Berkeley students helping with outreach, and one PAL staff member. The tabling event was timed to occur during a youth job training at the center, as well as sports practice times and general after-school park activities.

Approximately 50 community members stopped to provide input.

## 1. Board 1: WHY ARE WE HERE AND CONTEXT



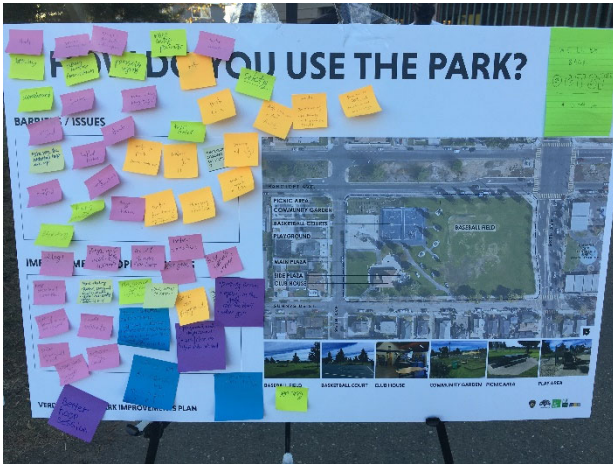
Staff explained why we are seeking community input on the park, by stating that we have an opportunity seek State grant funding for park improvements and we need the community's ideas for long-term success of the project and so that improvements implemented are what the community wants.

People commented on how they get to the park and surrounding context. Here is what we heard:

**Context:** This is a place the community respects, a safe, neutral place for everyone; I get to the park by walking, by biking, by driving; the park is a great location because it is central and located along heavily used streets; this is one of the only parks in the area that currently has basketball hoops.

**Site Analysis:** A safe space; parking is not usually a problem (x2); park access points are OK as they are, because Bancroft and 98<sup>th</sup> entries would open the park to busy vehicular streets; Visit the park every other day by car; I get to the park by walking, by walking, by driving;

## 2. Board 2: HOW DO YOU USE THE PARK?



Staff asked the community how they currently use the park and encouraged people to consider any barriers or issues they have with the park as well as general opportunities for improvements. This will inform the design team on what park elements people use and want to be sure to keep, but also what areas are points of concern for the community and ways in which this issues can be improved.

Here is what we heard:

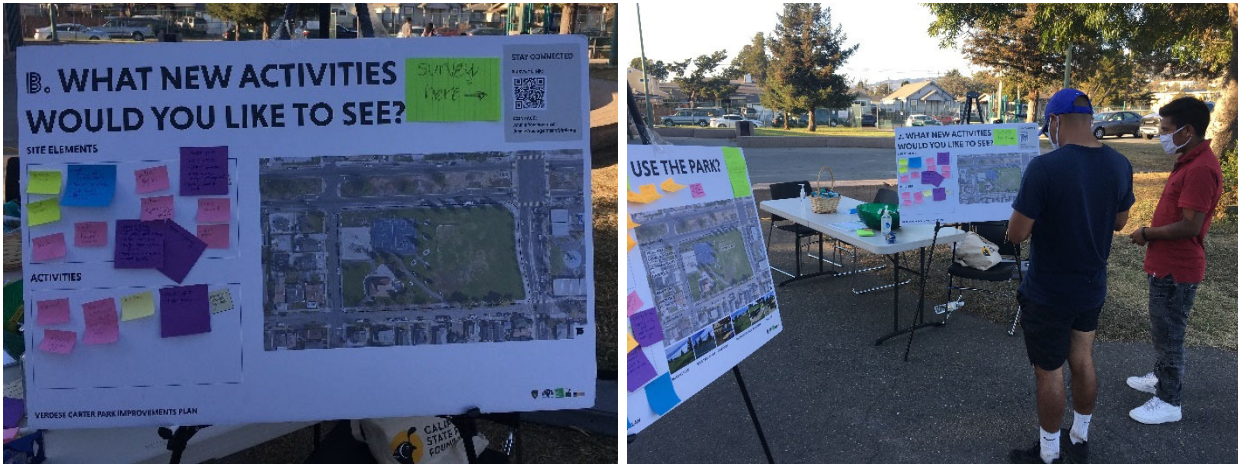
**General feedback on use:** I come to the park every day (x3); meet friends here; play basketball (x10); use the park for training people in sports/basketball and depend on this space for my job; sit and relax; use the community center; lay on the grass; play football (x4); play soccer

**Barriers/Issues:** Security at night; safety; potholes on the field cause injuries (x2); parking is sometimes an issue; playground is not nice; when it is hot during summer, programming seeks activities inside, but building is not big enough; trash is a problem; the park is too hot (x3); not enough places to enter the park; playground sand is not safe because of needles and other trash

**Improvement/Opportunity Areas:** A place to park bikes; fix the playground (x7) particularly by using mulch not sand (x4) and adding swings (x2) and better slide; keep all of the basketball courts and make sure the hoop is fixed (x3); higher fence for baseball field to keep balls in; better baseball field, create more entry points (x3), maybe one along Bancroft near the basketball courts; create more shade (x2); provide more parking areas; more places for people to sit; a general park upgrade (x2)



### 3. Board 3: WHAT WOULD YOU LIKE TO SEE AT THE PARK?



Staff asked the community what they would like to see at the park, including specific park elements and general activities.

Here is what we heard:

**Site Elements:** Garbage cans (x4); benches (x3); water fountains (x4), specifically a water purifying station; lighting (x7); soccer goals (x4) bigger kitchen in the community center; indoor gym (x11); trees; place to lock up or leave sports gear; parking lot (x2); score board; shade trellis or umbrellas (x3); artificial turf field; sports stands; public restrooms; better fencing; security cameras; track (x2)

**Activities:** More educational activities and a place for it in the center (x3); senior exercise; tennis; dog park or enclosed area for dogs to run off-leash; skateboarding;



# Verdese Carter Park Notes

## Virtual Community Meeting 2 : Alternatives

October 29, 6-7:30pm

### EVENT DESCRIPTION:

A virtual community meeting was hosted through Zoom on a weekday evening with the following goals:

- Inform the community/review the project understanding and site analysis
- Report back what we'd heard from the community during the Visioning events
- Seek community input on two design alternatives to guide development of a draft final concept plan that meets the needs of the community.

### TEAM:

Oakland PAL	City of Oakland Parks and Recreation and Youth Development	Oakland Parks and Recreation Foundation	Community Leaders	The Trust For Public Land	MIG	Interpreter
Officer Hill	Justice Bolden	n/a	Marquita Price	Annie Youngerman, Erik Zepeda-Flores	Monique Basse, Jan Eiesland, Jen Isacoff, Ana Padilla	Yaya Bravo and Djohra Chaboub

### AGENDA:

- Welcome and Introductions // Large Group
- Community Feedback Summary from Visioning Events // Large Group
- Design Discussion // Mural // Breakout Groups
- What we heard...Next Steps? // Large Group

TOTAL: 41 PARTICIPANTS

### COMMUNITY FEEDBACK SUMMARY FROM VISIONING EVENTS

Previous visioning input was shared in a zoom slideshow, including these lists summarizing community desires:

## Access and Circulation:

### BARRIERS

- Lack of lighting
- Fencing with holes
- No parking
- Limited entries
- Cars driving and parking in the park
- Reckless driving on Bancroft & 96th
- Safety at night
- Unleveled sports field

### IMPROVEMENTS

- Additional entrances into park
- Cross walk improvements
- Add lighting
- Secure fence and gates
- Extend park hours

## Site Elements:

### OPPORTUNITIES

- Seating options to view activity and games
- Picnic area with shade, it is too hot
- Trees and landscaping – native and drought tolerant
- Trash and waste bins and management
- Drinking fountain
- Walking and jogging path
- Lighting
- Mural and Art
- New surfacing
- Better play equipment
- Restroom

**New Activities:**

**ADULTS**

- Walking path
- Exercise center
- Indoor gym
- Place to gather and meet
- Arts and craft, cooking class, exercise class

**SENIORS**

- Community garden
- Walking path
- Exercise center/fitness equipment
- Play chess
- Garden seating for seniors
- Place to gather and meet
- Arts and craft, cooking class, exercise class

**CHILDREN**

- Expand playground
- More swings
- Ride bikes and scooters
- More games and equipment for toddlers
- Indoor gym

**TEENS**

- Multi-sports field
- Kickball
- Skateboarding ramp

**COMMUNITY**

- Track / walking path
- Traffic improvements
- Gathering spaces
- Exercise center
- Better facility
- Host a gathering
- Special events indoor and outdoor
- Multi-sports field
- Mobile community market
- Picnic area
- Computer hub



## **DESIGN DISCUSSION (BREAK OUT GROUPS)**

In two zoom breakout groups, team and community leaders took turns asking the group discussion questions for each of the two park design alternatives. A third group was available in Spanish, but all chose to participate in English. Comments were then recorded on virtual post-its on the Mural board that was shared in each breakout room.

The following four topics and questions were chosen to draw out community input to help guide development of a final concept plan:

- **Program Placement and Location**
  - Are the programmed spaces in the correct location? (access, adjacent uses, and program)
  - Does the design/program have a balance of multigenerational play? Are the design recommendations authentic to the community? How can it be improved?
- **Recreational Activities**
  - Identify which program areas can enhance your current and future recreational activities. What additional activities would you like to see?
- **Safety and Landscape Improvements**
  - Which alternative provides the appropriate solutions for safety? What can be improved?
  - Which alternative provides the appropriate solutions for Landscape Improvements? What can be improved?
- **Discuss your Preferred Alternative**
  - Which alternative works the best for your use of the park?
  - What do you like and dislike from each alternative?
  - Does the design/program have a balance of multigenerational play? Are the design recommendations authentic to the community? How can it be improved?

## **SUMMARY OF THE COMMUNITY'S KEY IDEAS:**

### **Program Placement and Location**

- Fields and lawn areas should be multi-purpose (soccer, kickball,...)
- Stage needs to be closer to the building for ease of use
- Play area needs to be visible, not tucked out of sight
- Some like the mobile community market idea for special events, but the everyday food trucks are at Bancroft because of visibility and they may not want to switch to a smaller, less visible street
- Provide entry at 98th and Bancroft, not mid-block on Bancroft.

### **Recreational Activities**

- Like the elements – Walking Loop, Central Community Space, Seating/Gathering, Fitness Area
- Seniors and kids are top priorities

- Clubhouse Remodel/Expansion desires: Indoor event/multi-purpose space, open to groups, computer room, kitchen/cooking class, dividers/movable walls
- Inclusive gym/rec center needed in East Oakland
- Exterior Clubhouse desires: Outdoor classes, dancing (20-30 people), shade area, hard surface with grass around it for overflow
- Some like the garden, although currently it's underutilized. Perhaps at corner of 98th/Sunnyside where school kids could also use.
- Fencing needed at field for balls

### **Safety and Landscape Improvements:**

- Dangerous intersections at both corners of the park on 96<sup>th</sup>
- Negative activities along 96<sup>th</sup>, need more supervision/policing
- Shade trees needed
- Sustainable design, recycled materials, recycle water
- Fencing needs to keep motor bikes and vehicles off lawn
- Fencing that locks at night?...discuss best options with park operations staff that are more safe than current situation (1-2 entries that are unlocked at night)

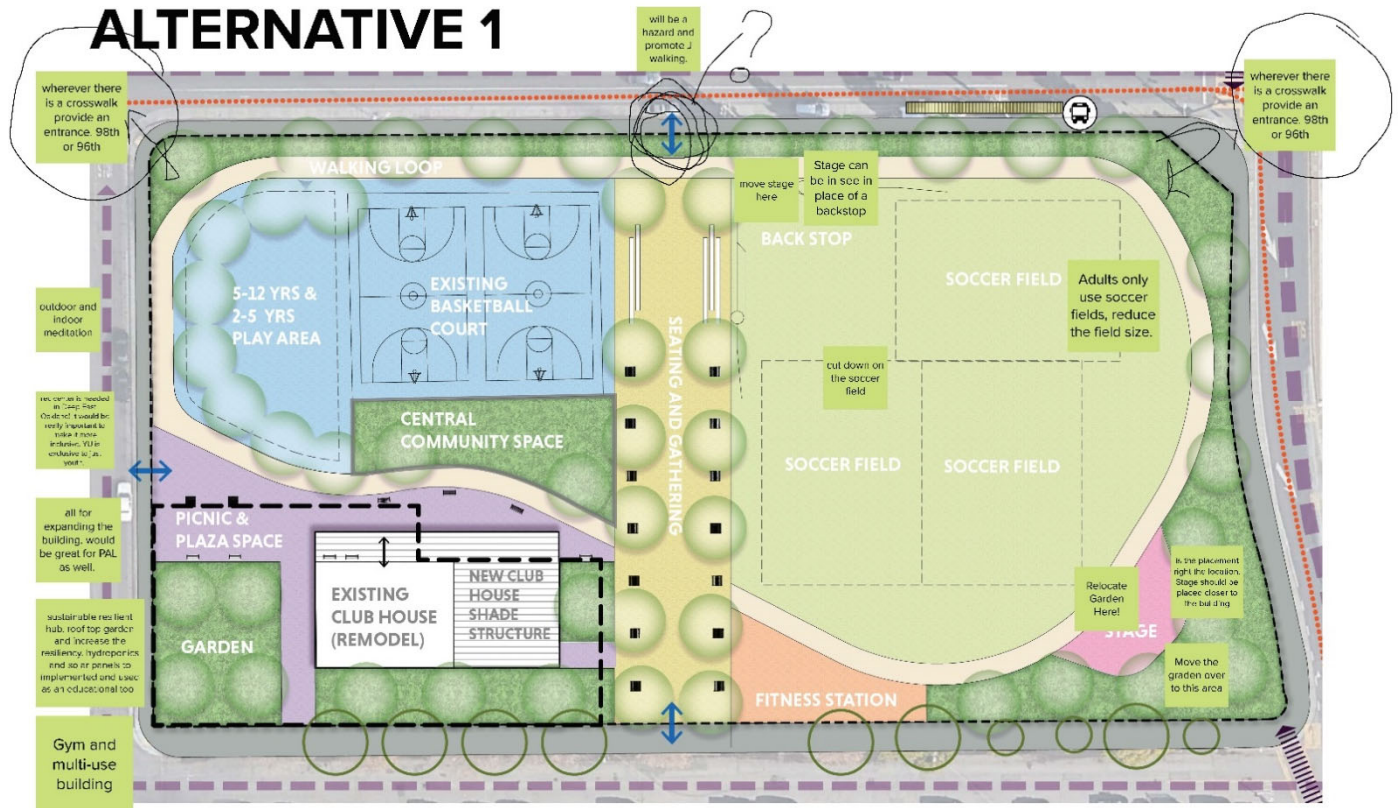
### **Alternative Preference:**

Both schemes had pros and cons and the community was split on their favorite. The majority of Group 1 preferred Alternative 1, while Group 2 preferred Alt 2 with some caveats. The team will draw on the desired individual elements and preferred adjacencies to drive the final concept plan.

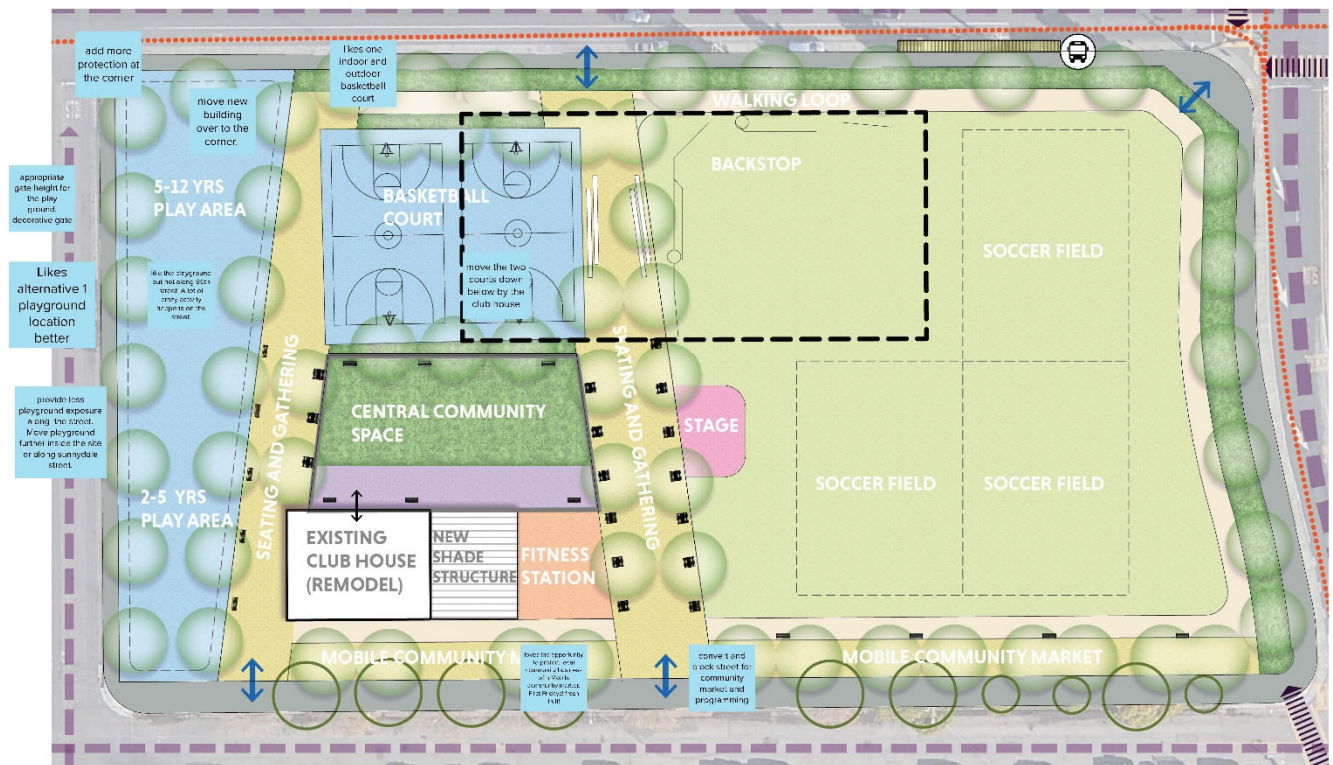
The boards are shown in entirety below as a record.

**Breakout Group 1 Full Comments:**

**ALTERNATIVE 1**



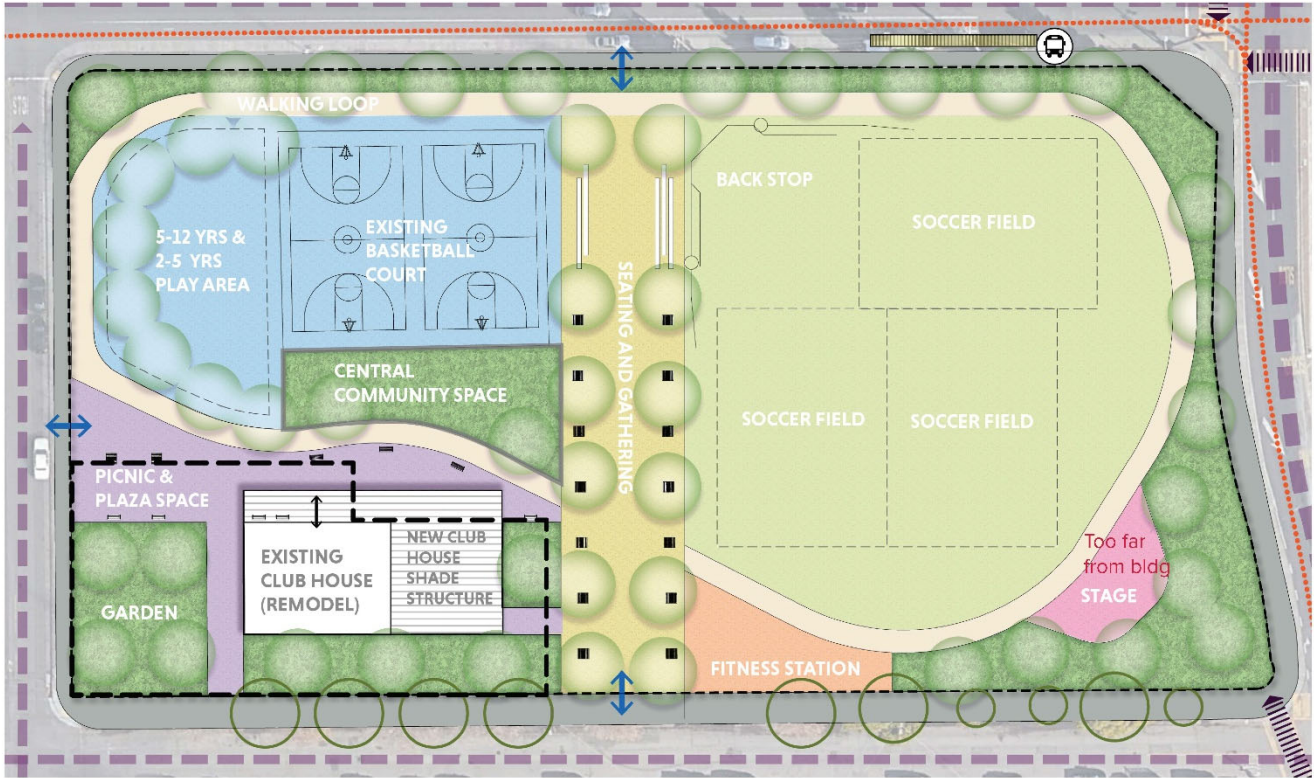
**ALTERNATIVE 2**





Breakout Group 2 Full Comments:

# ALTERNATIVE 1



**A** Program Placement and Location

<ul style="list-style-type: none"> <li>5-12 yrs play area</li> <li>2-5 yrs play area</li> <li>picnic &amp; plaza space</li> <li>garden</li> <li>existing club house (remodel)</li> <li>new club house shade structure</li> <li>seating and gathering</li> <li>fitness station</li> </ul>	<ul style="list-style-type: none"> <li>walking loop</li> <li>existing basketball court</li> <li>central community space</li> </ul>	<ul style="list-style-type: none"> <li>back stop</li> <li>sooccer field</li> <li>sooccer field</li> <li>sooccer field</li> </ul>	<ul style="list-style-type: none"> <li>Too far from bldg STAGE</li> </ul>
--	--	--	---

**B** Recreational Activities

<ul style="list-style-type: none"> <li>5-12 yrs play area</li> <li>2-5 yrs play area</li> <li>picnic &amp; plaza space</li> <li>garden</li> <li>existing club house (remodel)</li> <li>new club house shade structure</li> <li>seating and gathering</li> <li>fitness station</li> </ul>	<ul style="list-style-type: none"> <li>walking loop</li> <li>existing basketball court</li> <li>central community space</li> </ul>	<ul style="list-style-type: none"> <li>back stop</li> <li>sooccer field</li> <li>sooccer field</li> <li>sooccer field</li> </ul>	<ul style="list-style-type: none"> <li>Too far from bldg STAGE</li> </ul>
--	--	--	---

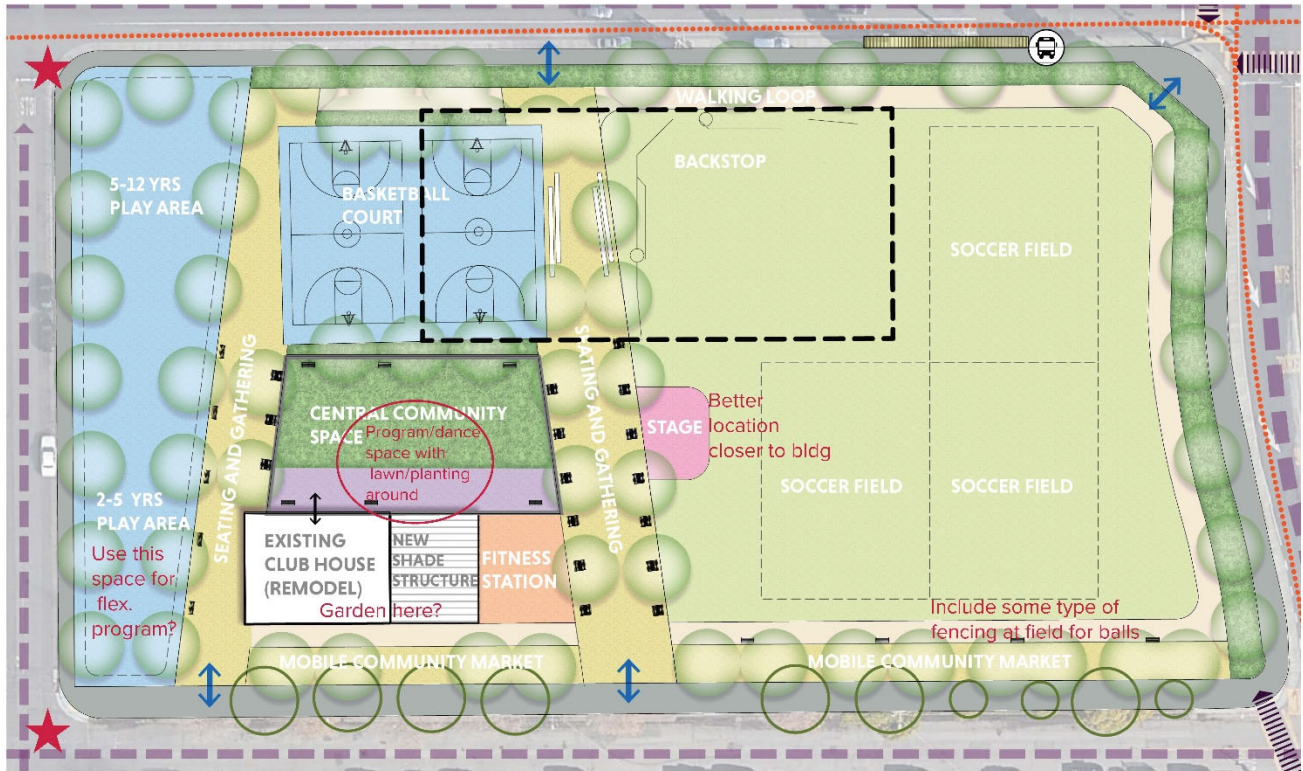
**C** Safety and Landscape Improvements

<ul style="list-style-type: none"> <li>5-12 yrs play area</li> <li>2-5 yrs play area</li> <li>picnic &amp; plaza space</li> <li>garden</li> <li>existing club house (remodel)</li> <li>new club house shade structure</li> <li>seating and gathering</li> <li>fitness station</li> </ul>	<ul style="list-style-type: none"> <li>walking loop</li> <li>existing basketball court</li> <li>central community space</li> </ul>	<ul style="list-style-type: none"> <li>back stop</li> <li>sooccer field</li> <li>sooccer field</li> <li>sooccer field</li> </ul>	<ul style="list-style-type: none"> <li>Too far from bldg STAGE</li> </ul>
--	--	--	---

**D** Alternative Preference

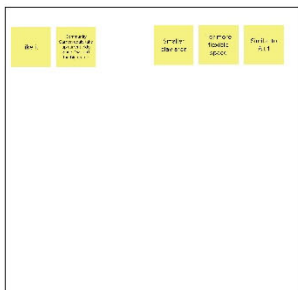
<ul style="list-style-type: none"> <li>5-12 yrs play area</li> <li>2-5 yrs play area</li> <li>picnic &amp; plaza space</li> <li>garden</li> <li>existing club house (remodel)</li> <li>new club house shade structure</li> <li>seating and gathering</li> <li>fitness station</li> </ul>	<ul style="list-style-type: none"> <li>walking loop</li> <li>existing basketball court</li> <li>central community space</li> </ul>	<ul style="list-style-type: none"> <li>back stop</li> <li>sooccer field</li> <li>sooccer field</li> <li>sooccer field</li> </ul>	<ul style="list-style-type: none"> <li>Too far from bldg STAGE</li> </ul>
--	--	--	---

# ALTERNATIVE 2

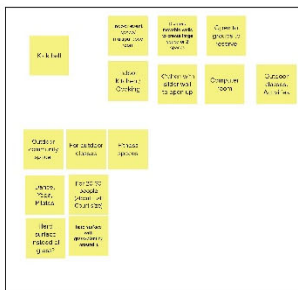


Need safety measure at intersection. Roundabout?

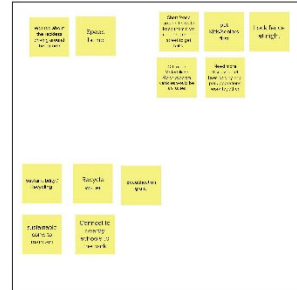
## A Program Placement and Location



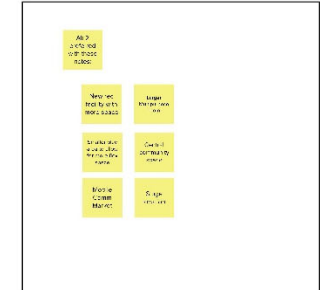
## B Recreational Activities



## C Safety and Landscape Improvements



## D Alternative Preference





# Verde Carter Park Visioning Event Notes:

In-person tabling - Event 3

Verde Carter Park, Saturday, October 31, 2-4pm

Four boards were displayed in the park, and staffed with one TPL staff member, three UC Berkeley students helping with outreach, one PAL staff member, and one OPRF staff member. The tabling event was timed to occur on a Saturday afternoon to get feedback from the community using the park on the weekend and community members who could not attend other events but heard about this tabling through advertisement. Goals for the tabling were to report back what we'd heard from the community during events 1 and 2, and to get input on design alternatives.

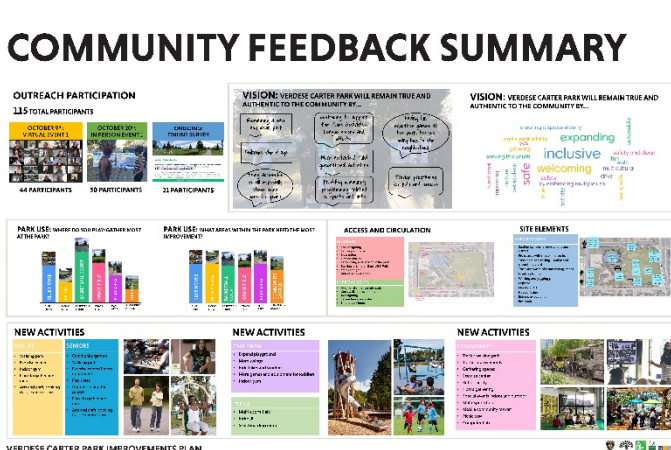
Approximately 25 community members stopped to provide input.

## 1. Board 1: WHY ARE WE HERE AND CONTEXT



Staff explained why we are seeking community input on the park, by stating that we have an opportunity seek State grant funding for park improvements and we need the community's ideas for long-term success of the project and so that improvements implemented are what the community wants.

## 2. Board 2: COMMUNITY FEEDBACK SUMMARY



People were invited to review what other community members have provided as feedback, and to give their input on how they use the park, and what areas might need the most improvement.



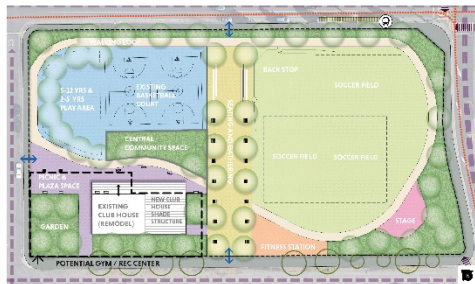
Here is what we heard:

**General feedback on use:** I walk to the park to play and get air outside; to be social.

**Improvement/Opportunity Areas:** Trash cans; water fountains (x3); more shade or more seating in the shade; safety surfacing for playground and not sand; cleaner playground; lighting (x3), more outdoor programming and activities (x2); indoor recreation center (x2); separate spaces to be in small groups

### 3. Board 3: DESIGN PLAN ALTERNATIVE 1

## ALTERNATIVE 1



Staff asked the community what they thought of park plan alternative 1, specifically what people thought of the layout of programmed spaces, if the spaces provided areas for multi-generational use, if the program areas enhanced people’s recreation activities, how they addressed safety and beautification, and if people had a preference in the park plan alternatives. would like to see at the park, including specific park elements and general activities.

Here is what we heard:

**Layout:** A dumpster area/access area will be needed for the existing clubhouse; I like the recreation center in this alternative because it keeps with where the existing clubhouse is.

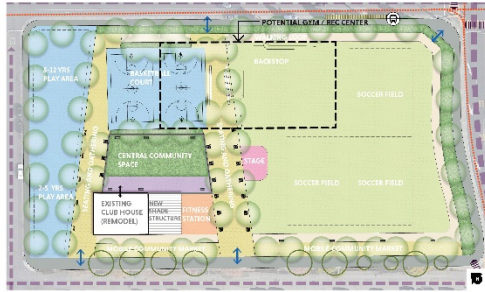
**Recreation Activities:** I like the stage; Maybe we don’t need a garden in this park, but we do keep the garden it would need to be stewarded and managed;

**Safety and Beautification:** The garden does not need to be as formal as it is now, and maybe more flowing and less about vegetable gardening, more a sensory garden.

**Preference:** I like the layout of Alternative 1; I like Alternative 1 because it keeps the same park integrity and look; additional 4 votes (6 total)

### 4. Board 4: DESIGN PLAN ALTERNATIVE 2

# ALTERNATIVE 2



VERDESSE CARTER PARK IMPROVEMENTS PLAN



PLAY AREA
FITNESS STATION
LARGE GROUP AND SPECIAL EVENTS
SPORTS FIELD
SEATING AND GATHERING
ENTERTAINMENT



Staff asked the community the same questions for Alternative 2 as for Alternative 1.

Here is what we heard:

**Layout:** I like the recreation center along Bancroft Street; Keep mobile food vending on Bancroft, not on Sunnyside because that is where it is naturally happening and Sunnyside is too quiet (x2); I like the central community space and/or if it were a garden.

**Recreation Activities:** Removing one basketball court would be OK to accommodate the new rec center; Limit food trucks because the park would get crowded.

**Safety and Beautification:** A gate along Bancroft would be good; The 2-5 year play area would have poor visibility and not be safe because it is behind the clubhouse. People staffing the after-school program would not be able to see kids in that part of the park; The proposed entrance next to the play area on Sunnyside has the same poor visibility and safety concerns;

**Preference:** 2 total



## Verdese Carter Park – Turkey Drive

### Engagement Notes

---

#### Date & Time

November 21<sup>st</sup>  
9am – 12:30pm

#### Attendees

- TPL: Erik Zepeda-Flores
- UC Berkeley: Gaby,
- # of engaged: ~40-50

#### Location

Verdese Carter Park

---

#### Notes:

##### Inspiration Board Votes

- Walking - 5
- Fitness Zone - 5
- Seating/Picnic Area - 5
- Nature Play - 10
- Traditional Play – 3

##### Comments:

- Fitness Zone
  - Good use of fitness zone
  - Exercise is important for folks
  - Fitness zone group classes
- Playground
  - Mulch or rubber surfacing is highly preferred over sand
  - Playground separation of ages is good for safety of younger kids
- General Notes
  - More gathering / meeting locations
  - Parking?
  - Lighting & Visibility
    - specifically in the basketball courts
  - Supervision and stewardship of the site
  - After-school programming
  - Walking loop is valued

#### Overall Notes:

In general, there was no clear consensus on alternative preferences, but a reinforcement of the need for site elements that have been discussed in prior engagement events. A strong majority of community members are hoping for an expanded/renovated club house, renovated playground with separation of



age groups, and basketball court. Lighting and access points were also mentioned several times as issues concerning the general safety of the park.

See photos attached