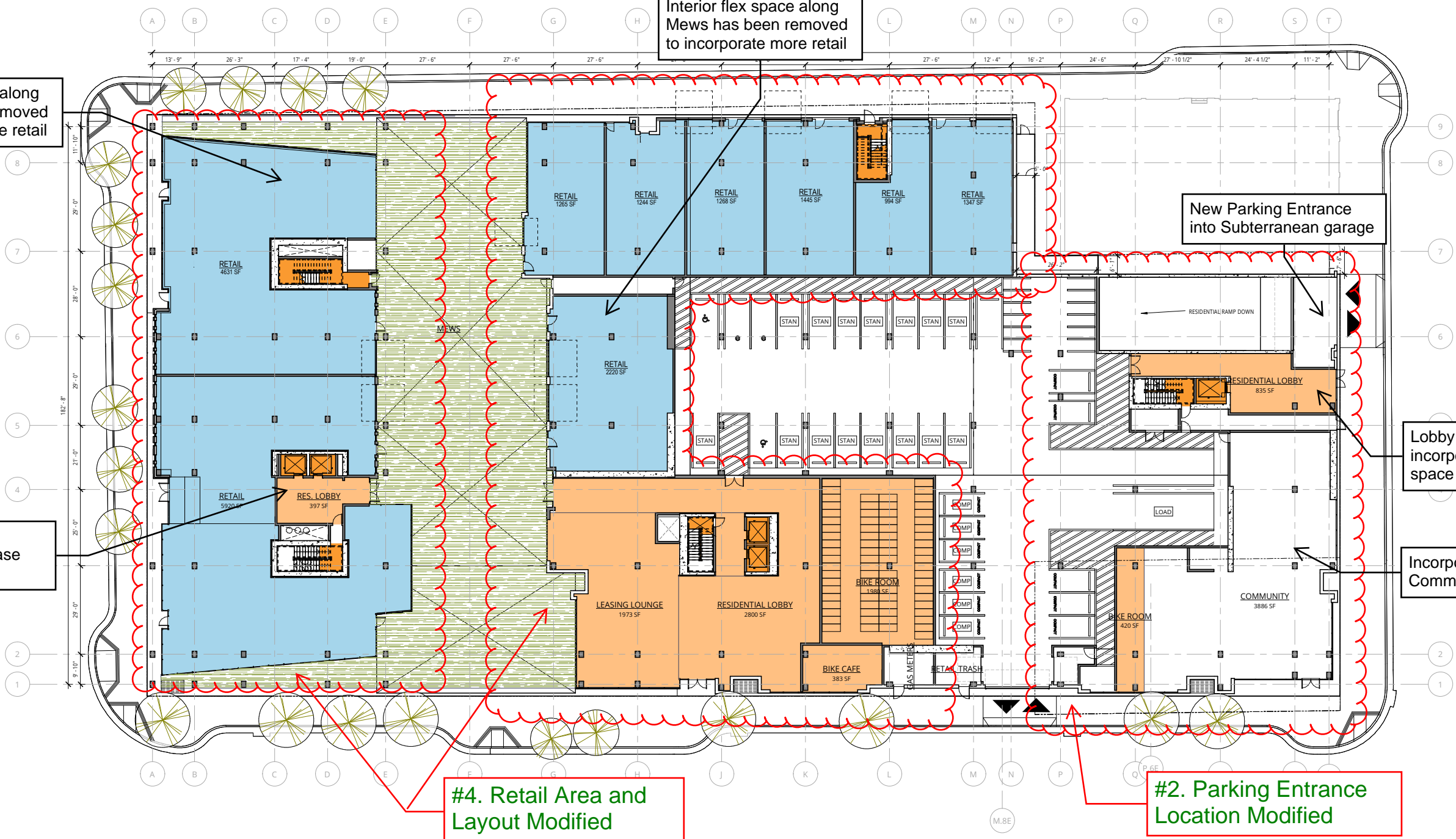


8/22/2016 5:57:55 PM
C:\Revit\Projects\MacArthur Station - Parcel A1\42010-15-MacArthur Station-Parcel A_sheets.rvt



1 PARCEL A LEVEL 1
A.2.01 | 1/16" = 1'-0"

Ankrom Moisan
6720 SW MACADAM AVENUE, SUITE 100
PORTLAND, OR 97219
T 503.245.7100
117 SOUTH MAIN STREET, SUITE 400
SEATTLE, WA 98104
T 206.576.1600
© ANKROM MOISAN ARCHITECTS, INC.

TIPPING MAR
STRUCTURAL
1906 SHATTUCK AVE
BERKELEY, CA 94704
T 510.549.1906

SANDIS
CIVIL
636 9TH ST
OAKLAND, CA 94607
T 510.590.3415

MILLER COMPANY LANDSCAPE
LANDSCAPE
1585 FOLSOM ST
SAN FRANCISCO, CA 94103
T 415.252.7288

MACARTHUR STATION PARCEL A
40TH STREET AND TELEGRAPH AVENUE, OAKLAND, CA
BRIDGE HOUSING

PARCEL A GROUND LEVEL

HINES DEVELOPMENT SET

DATE	REVISION
04.20.2016	

PROJECT NUMBER	SHEET NUMBER
142010	A 2.01

SCALE 1/16" = 1'-0"

4/9/2015 10:24:12 AM

C:\Revit\Projects\MacArthur Station - FPP - 142010-15\MacArthur Station\FPP Set A_SRF.dwg



1 LEVEL 1 OVERVIEW
 A 1.00 | 1" = 30'-0"



Ankrom Moisan
 6720 SW MACADAM AVENUE, SUITE 100
 PORTLAND, OR 97219
 T 503.245.7100
 117 SOUTH MAIN STREET, SUITE 400
 SEATTLE, WA 98104
 T 206.576.1600
 © ANKROM MOISAN ARCHITECTS, INC.

TIPPING MAR
 STRUCTURAL
 1906 SHATTUCK AVE
 BERKELEY, CA 94704
 T 510.549.1906

SANDIS
 CIVIL
 635 9TH ST
 OAKLAND, CA 94607
 T 510.590.3415

MILLER COMPANY LANDSCAPE
 LANDSCAPE
 1585 FOLSOM ST
 SAN FRANCISCO, CA 94103
 T 415.252.7288

MACARTHUR STATION BLOCKS A & C1
 40TH AND TELEGRAPH OAKLAND, CA
 BRIDGE HOUSING

OVERVIEW PARCELS A & C1

FINAL DEVELOPMENT PACKAGE

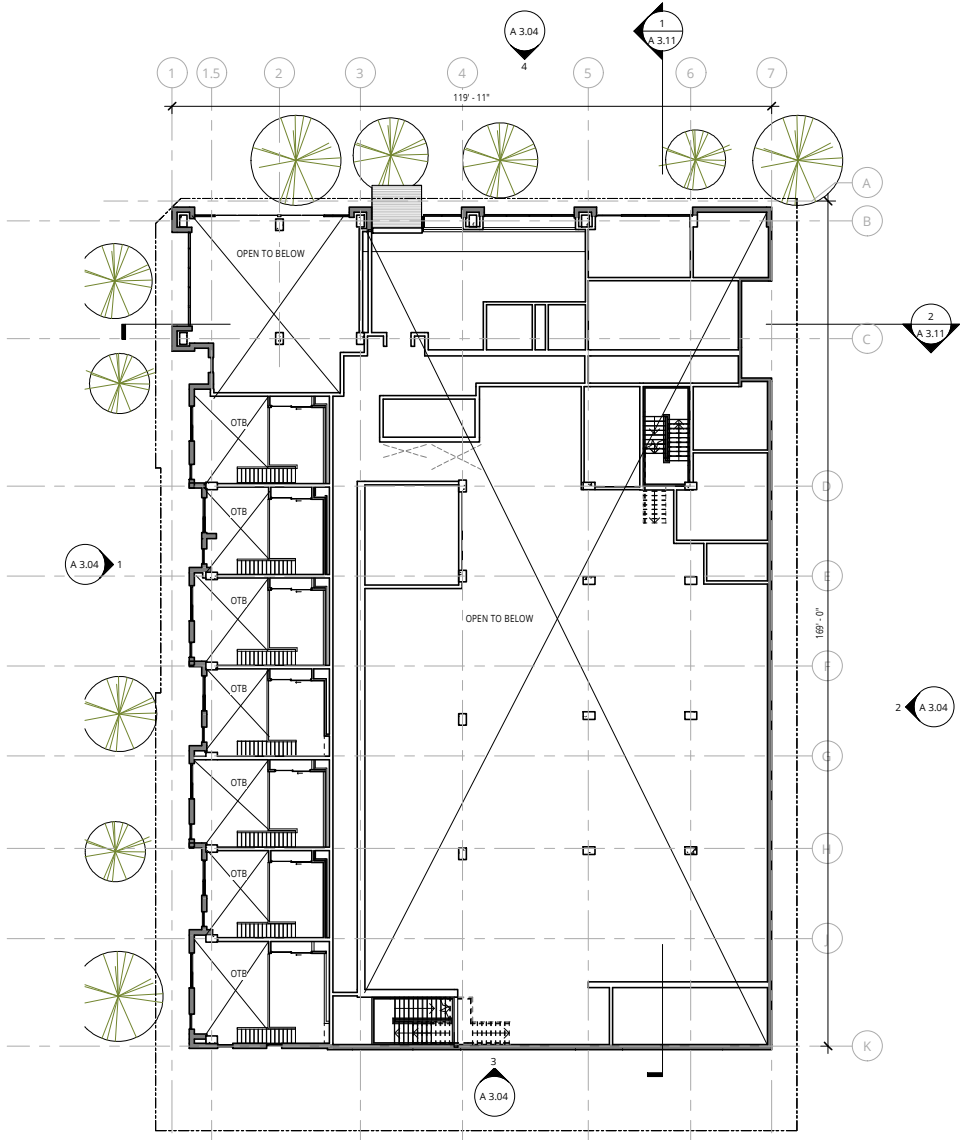
DATE 04.09.2015	REVISION
PROJECT NUMBER 142010	SHEET NUMBER A 1.00
SCALE 1" = 30'-0"	

4/9/2015 10:24:50 AM

C:\Revit\Projects\MacArthur Station - FDP - 381142010-15\MacArthur Station\FDP_Sht-A_SitePlan.rvt

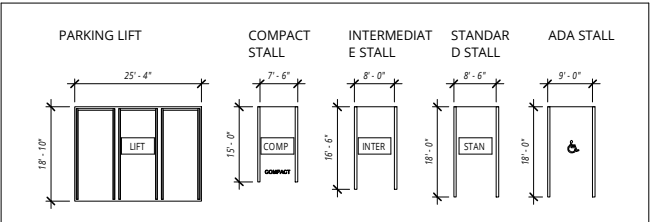


1 PARCEL C1 LEVEL 1
A 2.20 | 1/16" = 1'-0"




2 BLOCK C1 LOFT LEVEL
A 2.20 | 1/16" = 1'-0"

PARKING LEGEND



No Changes to Site Plan from FDP



Ankrom Moisan

6720 SW MACADAM AVENUE, SUITE 100
PORTLAND, OR 97219
T 503.245.7100

117 SOUTH MAIN STREET, SUITE 400
SEATTLE, WA 98104
T 206.576.1600

© ANKROM MOISAN ARCHITECTS, INC.

TIPPING MAR

STRUCTURAL
1906 SHATTUCK AVE
BERKELEY, CA 94704
T 510.549.1906

SANDIS

CIVIL
636 9TH ST
OAKLAND, CA 94607
T 510.590.3415

MILLER COMPANY LANDSCAPE

LANDSCAPE
1585 FOLSOM ST
SAN FRANCISCO, CA 94103
T 415.252.7288

MACARTHUR STATION BLOCKS A & C1
40TH AND TELEGRAPH OAKLAND, CA

BRIDGE HOUSING

PARCEL C1 GROUND & MEZZANINE LEVELS

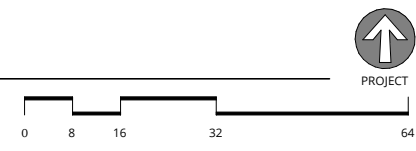
FINAL DEVELOPMENT PACKAGE

DATE 04.09.2015	REVISION
PROJECT NUMBER 142010	SHEET NUMBER
SCALE 1/16" = 1'-0"	A 2.20

C:\Revit\Projects\MacArthur Station - Parcel C\1142010-15-MacArthur Station-Parcel C1_sarah.rvt 4/20/2016 5:19:36 PM



1 PARCEL C LEVEL 1
 A 2.20 | 1/16" = 1'-0"



6720 SW MACADAM AVENUE, SUITE 100
 PORTLAND, OR 97219
 T 503.245.7100

117 SOUTH MAIN STREET, SUITE 400
 SEATTLE, WA 98104
 T 206.576.1600

© ANKROM MOISAN ARCHITECTS, INC.

STRUCTURAL CONSULTANT NAME

STRUCTURAL
 7434 E McDONALD DR
 SCOTTSDALE, AZ 85250
 T 480.922.8854

CIVIL CONSULTANT NAME

CIVIL
 3561 E SUNRISE DR, SUITE 225
 TUCSON, AZ 85718
 T 520.318.1950

MACARTHUR STATION - BLOCK C1
 39TH STREET AND TELEGRAPH AVENUE, OAKLAND, CA

BRIDGE HOUSING

REVISION	DATE	REASON FOR ISSUE

PARCEL C1
 GROUND & MEZZ

HINES
 DEVELOPMENT SET

DATE 04.20.2016	REVISION
PROJECT NUMBER 142010	SHEET NUMBER A 2.20
SCALE 1/16" = 1'-0"	