

**Cultural Affairs Division
Economic & Workforce Development Department**



**Public Art Advisory Committee
Regular Meeting
Monday, July 1, 2019**

**Oakland City Hall
Hearing Room 4
1 Frank Ogawa Plaza
5:30 - 7:30 pm**

2019 JUN 28 PM 1:15
OFFICE OF THE CITY CLERK
OAKLAND

AGENDA

- I. **Welcome/Call to Order**
- II. **Open Forum**
- III. **Approval of Minutes: June 3, 2019 meeting**
- IV. **Action Item: Review and Make a Recommendation: Council District 1 Anti-Graffiti Mural Proposal for the St. Columbia Church Social Hall at 6401 San Pablo Avenue, by Artists Debbie Koppman and Laurie Polster**
- V. **Action Item: Review and Make a Recommendation: Artist Initiated Public Art Mural Proposal for the Dimond Branch Library, by Artist Debbie Koppman**
- VI. **Informational Item: Oak Knoll Development Public Art Plan**
- VII. **Informational Item: Cultural Affairs and Public Art Legislation Update**
- VIII. **Informational Item: Staff Updates on Pending Projects and Program Activity**
 - a. **Measure DD Bond Projects- Lakeside Green Streets Dedication; Garden Gates**
 - b. **MacArthur Gateway Arches Public Art Update**
 - c. **Public Art in Private Development: Update on Various Projects**
 - d. **Artist and Community Initiated Projects**
- IX. **Announcements**
- X. **Agenda Building: Outline agenda for August 2019 meeting**
Next regular meeting: August 5, 2019, Hearing Room 4, Oakland City Hall
- XI. **Adjourn**

Oakland Cultural Affairs - Public Art Program, 1 Frank H. Ogawa Plaza, 9th fl. Oakland, CA 94612
www.oaklandculturalarts.org

This meeting is wheelchair accessible. To request materials in alternative formats, an ASL interpreter, or an assistive listening device, please call the Planning Department at 510-238-3941 or TDD 510-238-3254 at least three working days before the meeting. Please refrain from wearing scented products to this meeting so that persons who may experience chemical sensitivities may attend. Thank you.

Cultural Affairs Division
Economic & Workforce Development Department



**Public Art Advisory Committee
(PAAC)
June 3, 2019
Minutes**

Members Present: Bryan Cain (co-chair), Jennifer Correia, Michele Ramirez, Charmin Roundtree-Baaqee
Excused: Jennifer Kessler, Yulia Pinkusevich, Patricia Cariño Valdez, Chris Treggiari
Absent:
Staff Present: Kristen Zarembo, Public Art Coordinator; Roberto Bedoya, Cultural Affairs Manager*; Neha Balram, Cultural Affairs Program Analyst
Guests: Natalia Mount, Jakub Kalousek, Ravi Patel

Meeting Chair: B. Cain

*Indicates partial attendance

1. Meeting called to order at 5:36 p.m.
2. **Open Forum**
3. **Minutes: J. Correia moved to approve the minutes of the March 4, 2019 Public Art Advisory Committee meeting. C. Roundtree-Baaqee seconded. Motion passed unanimously.**
4. **Informational Item: Staff and Committee Introductions.** Public Art Coordinator Kristen Zarembo introduced two new committee members, Jennifer Correia and Michele Ramirez. Zarembo reported that three new committee members, including Eric Murphy, had convened for a committee orientation prior to the May meeting, for which there was no quorum.
5. **Action Item: Receive an introduction to the “Pro Arts @ the commons,” a series of Public Art Installations and Performances for Frank Ogawa Plaza, and first project review: “Cultivating Complacency” by artist Jakub Kalousek, for June 22, 2019.** K. Zarembo provided context for the PAAC review of public art installations for city property and City Hall / Frank Ogawa Plaza. Pro Arts Executive Director Natalia Mount provided background on the public programs provided by Pro Arts Gallery, located across the plaza from City Hall. Mount described the gallery’s intent to prioritize marginalized voices through their public programs, including film and video screenings, performances and temporary installations in the plaza. Pro Arts is now launching “Pro Arts 2 the commons” with support from a National Endowment for the Arts Artworks grant and in collaboration with Oakland Public Art Program staff. Programming will include temporary initiatives such as the Black and Brown Film Screening and work by local artist Praba Pilar, as well as brown bag talks to augment programming and gallery installations. The first project in the series is a temporary inflatable

PAAC 7-1-19 Item III

sculpture and performance work by Jakub Kalousek, “Cultivating Complacency,” intended to prompt responses to the tendency toward complacency we encounter in society. Committee members requested clarification on technical details and suggested the artist consider explicit ways to engage and reflect the surrounding community in artwork designed for Oakland public space. **Motion: C. Roundtree-Baaqee moved to approve the temporary installation of “Cultivating Complacency” for Frank Ogawa Plaza. J. Correia seconded. Motion passed unanimously.**

6. **Action Item: Appoint New Committee Co-Chair.** With the departure of Allison Cummings, Charmin Roundtree-Baaqee has agreed to be the new co-chair. **Motion: J. Correia moved to appoint Charmin Roundtree-Baaqee as the new Public Art Advisory Committee co-chair. M. Ramirez seconded. Motion passed unanimously.**
7. **Informational Item: Cultural Affairs Commission and Public Art Program Legislation.**
The legislation with proposed revisions is tentatively scheduled to be presented to the Life Enrichment Committee on June 25th. If the item is not heard on the 25th it will be postponed until September, due to an extended summer recess for City Council committee meetings July- August. PAAC members will be apprised of the legislative schedule and are encouraged to attend the meetings. Once adopted, staff and the committee will review and update the program guidelines as well as plan for additional programming needs including maintenance and temporary initiatives.
8. **Informational Item: Staff Updates on Pending Projects and Program Activity**
 - a. **Measure KK Bond Program: Rainbow Recreation Center.** As previously reported, the artwork has been installed. A well-attended celebratory project dedication was held on May 18th. K. Zaremba noted that the project represents a model capital improvement project serving East Oakland residents, with contributions from multiple artists successfully coordinated with the building designers and general contractors for the project. This project will serve the City well in seeking out future funding for community investment in Oakland.
 - b. **Measure DD: Gardens Gates Project; Lakeside Green Streets; Estuary Park.** The Wowhaus project has been successfully installed at Snow Park. The Lakeside Green Streets Project dedication is scheduled for Monday, July 10, at 10:00 a.m. Speakers will include the Mayor, Measure DD Coalition representatives, Public Works, Department of Transportation representatives and Roberto Bedoya, speaking on behalf of the public art. Committee members are encouraged to attend.
 - c. **Public Art in Private Development.** The HYBYCOZO project team is planning an informal dedication gathering during First Fridays on June 7th. Other project funders, include Signature Development, are currently installing work. Staff will bring an update on specific projects to an upcoming meeting.
9. **PAAC Field Trip Planning:** Committee members and staff discussed a possible summer meeting in the field, to visit some project sites. Staff will send a doodle poll to determine possible dates.
10. **Announcements:**
11. **Agenda Building: D. Koppman will present a proposal for the Dimond Library.**
12. **Adjournment: C. Roundtree-Baaqee moved to adjourn the meeting at 7:29. M. Ramirez seconded. Motion passed unanimously.**

PAAC 7-1-19 Item III

Cultural Affairs Division

Economic & Workforce Development



Public Art Advisory Committee Proposal Review Form

Date June 19, 2019

Artist(s) Laurie Polster and Debbie Koppman

Project Contact Laurie Polster

Organization (if applicable) _____

Phone # 510-595-0434 Email lapolster@earthlink.net

Street Address 657 Alcatraz Avenue

City Oakland State CA Zip 94609

Proposed Site of Project (Address/Cross St. with physical details) 6401 San Pablo Ave @ Alcatraz Ave, St. Columba Church social hall facade on San Pablo Ave.

Name of Property Owner, Proposed Location Roman Catholic Bishop of Oakland Corp. Sole (Fr. Aidan McAleenan, St. Columba Church)

City Council District of Proposed Location District 4

Attachments Checklist Attach a separate document to address the following items, bundled together in a single electronic file:

1. Review Form (this page)
2. Project Narrative
3. Artist Resume
4. Examples of Past Work
5. Visual Proposal
6. Materials and Methods Description
7. Photos of Site
8. In-Situ Mockup
9. Timeline
10. Budget
11. Maintenance Plan
12. Community Outreach / Support Documentation
13. Insurance Documentation
14. Permission(s)- Private Property Owner or City (Fr. Aidan letter, plus Mural Authorization Agreement)
15. N/A Waiver of Proprietary Rights for Artwork Placed on City Property (if applicable)

Project Narrative

The Fabric of St. Columba, proposed by Oakland artists Debbie Koppman and Laurie Polster, sits directly on San Pablo Avenue, a highly visible location at the corner of Alcatraz. The wall is the front façade of the social hall of St. Columba Church. We met with the priest and the Pastoral Council, to come up with an image which we hope will simultaneously honor the vision of the members of this faith-based, environmental and social justice community, mitigate the ongoing blight, and offer the larger community of passersby an uplifting sense of energy, light, movement, and connectedness, with no specific religious references. We hope this project, close to the Oakland/Berkeley border, will contribute to the overall improvement of the aesthetic landscape of this difficult and well-traveled corridor, resulting in emotional benefits for the walking, cycling, and driving public.

The image makes abstracted connections to West African Adinkra symbols found on the church doors and website – symbols whose meaning include friendship, interdependence, unity, nurturing, and resourcefulness – and to enormous interwoven plant, pod, and root structures. Images created through layering and transparency overlap, move back and forth in space, and suggest literal movement down the street, and metaphorical movement through time and place. Layering and overlapping also reference fabric, visually suggesting the interweaving of all life forms in the creation and sustenance of community.

Manifesting this spirit of community, we plan to invite Father Aidan, along with children and youth together with their families, to help with the preliminary priming and painting of the mural.

Debbie Koppman has created over 30 public murals over the last 13 years, both in paint and in mosaic tile, in the cities of Oakland, Hayward, and San Pablo. Laurie Polster is an interdisciplinary artist, designer, and educator whose collaborative projects throughout the Bay Area include public art, scenic design, murals, and performance. Both artists live in Oakland, Laurie lives in District 1 not far from the mural site.

The Church is very active in the community with strong connections through social justice and environmental issues. Given this history, they are very excited about having the artists paint a green wall mural that represents their roots and the fabric of their connection to the community.

EDUCATION:

DOCTOR OF ARTS, Studio Arts, New York University, 1993
Emphasis in painting, printmaking, criticism, aesthetics

MASTER OF ARTS, Fine Arts, University of California, Berkeley 1982

BACHELOR OF ARTS, Fine Arts, University of California, Berkeley 1980

SELECTED MURALS

- 2018 JAZZIN' IT UP AT SOON'S LOUNGE, Oakland, California
- 2018 TRAVELING ON INTERNATIONAL BOULEVARD, Oakland, California.
- 2017 PALMA CEIA'S MAGIC GARDEN, Hayward, California.
- 2017 FIESTA EN LA FINCA! La Finca Tortilleria, Oakland, California.
- 2017 PLANTS ON PLANTERS, Laurel District, Oakland, California.
- 2016 SAUSAL CREEK TO THAILAND, Dimond Café, Dimond District, Oakland
- 2016 SEQUOIA'S RAINBOW ROAD, Sequoia Elementary School, Dimond District, Oakland
- 2016 ENCHANIMALS! In collaboration with Sequoia Elementary School students, Dimond District, Oakland
- 2016 THREADS OF SAN PABLO, City of San Pablo, California (3 panels)
- 2015 WELCOME TO SAN PABLO! City of San Pablo, California (2 panels)
- 2015 DIMOND RIVER, Dimond District, Oakland, California
- 2014 THE BUDDHA'S 8 FOLD PATH, (directed 62 6th grade English/History students) Bret Harte Middle School.
- 2014 I LOVE DIMOND, MacArthur and Lincoln, Dimond District, Oakland, California
- 2013 YOU'RE HUNGRY, EAT HEALTHY, (directed Advanced Art Students, 6th – 8th grade) Bret Harte Middle School.
- 2012 RAINBOW FISH, (directed 90 3rd graders) Glenview Elementary.
- 2012 SEQUOIA'S HIDDEN JEWELS, Mosaic Mural, in collaboration with the Sequoia Elementary school community. Lincoln and Scenic, Dimond District, Oakland, California.
- 2011 WELCOME TO FRUITVALE, 880 & Fruitvale, 12 Pillars. Commissioned by The Unity Council.
- 2011 DIMOND'S HIDDEN JEWELS, in collaboration with Amanda Lockwood and Sequoia Elementary School students. Fruitvale Avenue and MacArthur, Dimond District, Oakland, California.
- 2008 WHAT'S COOKIN', GOOD LOOKIN'? Designed and facilitated, in collaboration with Amanda Lockwood. Healthy Start After-School Program, Sequoia Elementary. (Painted by 4th and 5th graders.)
- 2008 IMAGINE, (with 6th, 7th, and 8th grade art students) Bret Harte Middle School, Oakland, California
- 2007 PLANTS AND HOPES RISING, Sequoia Elementary, Oakland, California
- 2006 PHOENIX RISING, BRET HARTE RISING, Bret Harte Middle School, Oakland, California
- 2006 QUETZALCOATL, (with 6th, 7th, and 8th grade art students) Bret Harte Middle School, Oakland, California
- 2005 THE FOUR ELEMENTS (with 6th, 7th, and 8th grade art students) Bret Harte Middle School, Oakland, California

SELECTED TEACHING EXPERIENCE:

1998 - 2016 ARTIST-IN-RESIDENCE
Sequoia Elementary School, Oakland, California

2012 - 2013 ADJUNCT PROFESSOR, SCHOOL OF ARTS AND SCIENCES: Teaching Visual Art
Brandman University, Walnut Creek, California

2007 - 2009 FACULTY, DEPARTMENT OF ART AND PATHWAYS PROGRAM
Dominican University, San Rafael, California

1999 - 2005 INSTRUCTOR
University of California, Berkeley, Extension

1995 VISITING PROFESSOR, DEPARTMENT OF ART
Universidad Católica, Lima, Peru

1993 - 1997 PROFESSOR, DEPARTMENT OF GRADUATE STUDIES
Academy of Art College, San Francisco, California

1993 INSTRUCTOR, DEPARTMENT OF ART
Los Medanos College, Pittsburg, California

1991 VISITING PROFESSOR
Escuela Nacional de Bellas Artes, Managua, Nicaragua

1987-1989 PROFESSOR, DEPARTMENT OF ART AND DESIGN
Universidad de Las Américas, Puebla, México

SELECTED SOLO/2-PERSON EXHIBITIONS:

2013 SCULPTURE AND FURNITURE
Union Bank, San Francisco, California

2012 A CHANCE TO PLAY (with Luz Marina Ruiz)
San Pablo Arts Center, San Pablo, California

2009 I SAW THE STRANGEST THINGS
Humanities Center Gallery, Cal State Chico, Chico, California

2008 13 WISHES FOR 13 WITCHES
1870 Gallery, Belmont, California

2006 WERNER GLINKA & DEBRA KOPPMAN (2-person) Crockett Contemporary Art, Crockett, CA

2005-2006 IN THE SANCTUARY
San Jose Museum of Quilts and Textiles, San Jose, California

1998 SUEÑOS SUREÑOS (SOUTHERN DREAMS): WORKS ON PAPER
Peruvian/North American Cultural Institute, Lima, Peru

1998 TO THE PACHA MAMA: WORKS ON PAPER
Fulbright Commission, Lima, Peru

1995 MIXED MEDIA PAINTINGS AND SCULPTURES
Banaker Gallery, San Francisco, California

SELECTED FELLOWSHIPS/GRANTS/AWARDS:

FULBRIGHT SCHOLAR LECTURING AWARD IN PERU
CALIFORNIA ARTS COUNCIL, ARTIST-IN-RESIDENCE
OUTSTANDING OAKLAND ARTS EDUCATOR, CALIFORNIA STATE SENATE
WOMEN'S STUDIES COMMISSION DOCTORAL DISSERTATION AWARD, New York University

LANGUAGES: Native-level fluency in Spanish, conversational in Portuguese, Hebrew.

LAURIE POLSTER

studio: 510.595.0434 • mobile: 510-393-0421 • email: lapolster@earthlink.net • website: polsterprojects.com

Laurie Polster is an inter-disciplinary artist, visual designer, and educator working in public art, video, sound, installation, sculpture, and performance. Along with solo projects, she has collaborated on numerous public art projects, created murals with students, and been an award-winning scenic designer who also worked as a scenic artist at SF Opera. Her projects reflect her engagement in social justice, ecological issues and arts education.

EDUCATION

- 2011 M.F.A., Electronic Music and Recording Media, Mills College, Oakland, CA
 1977 M.F.A., Visual Art (Printmaking / Ceramics), Massachusetts College of Art, Boston, MA
 1973 B.F.A., cum laude, Visual Art (Printmaking / Painting) University of Michigan, Ann Arbor, MI

VIDEO and ANIMATION PROJECTS

- 2015 *Dreamtime*, a meditation on time, and an homage to Muybridge and the perceptual effect of phasing 5:10 video
 2014 *InterSections: The Spaces In Between*, interactive video installation, presented at The Milk Bar, Oakland, CA.
 2011 *re/living • home/land*, video and sound project; a reflection on culture, identity, and place – on image and language, and the less apparent spaces in between; presented at *Signal Flow*, Mills College, Oakland, CA.
 2009 *The Elements of Art | Form | Line | Color | Shape |Space | Texture*; animation and sound design project, 6 animations created for SFMOMA's Education Department based on images in the museum's collection

PUBLIC ART

- 2012 *Do Trees Have Nationality?* The Olive Oil Tasting / Gift Exchange Picnic on Jesse Square, SF. DoTreesHaveNationality.org
 2008 *The Line of Questioning*. Addison Street Windows Gallery, City of Berkeley, CA public project.

LIGHTING DESIGN in PUBLIC ART

- 2015 *Crossing Signal Mosaic*, light symphony composer and LED programmer for Therese Lahaie's light sculpture installation, Parc on Powell Apartments, 1333 Powell Street, Emeryville, CA

MURAL FACILITATION & PAINTING

- 2018 *Dragon*. The Crowden School, Berkeley, CA. Facilitated 8th students in designing and painting large mural
 2007 *Gateway to Fruitvale*. 880 underpass at Fruitvale Avenue, Oakland. Mural painting with Debbie Koppman

INSTALLATIONS + SOLO EXHIBITIONS

- 2009 *Drawers*. Mills College Lisser Hall, Oakland, CA.
 2005 *Vessels*. "In the Round," San Jose Institute of Contemporary Art, San Jose, CA.
 2001 *Fossil Topographies*. "Unearthed," Sanchez Art Center, Pacifica, CA.
 1999 *The Falling*. "Spaces of Nature," Armory Center For The Arts, Pasadena, CA. Richmond Art Center, Richmond, CA.
 1998 *She Held Close the Essential*. Berkeley-Richmond Jewish Community Center, Berkeley, CA.
 1996 *Markings II*. Anderson Ranch Arts Center, Snowmass Village, CO.
 1994 *Reflections in Stone*. Pro Arts, Oakland, CA.
 Braunstein/Quay Gallery, San Francisco, CA. "Introductions 1994 — Spoons"
 Works, Sonoma, CA. *The Still Life/Shelf Series*
 1993 *In Search of My Grandmother's Bread Bowl*. Judah L. Magnes Museum, Berkeley, CA.

SELECTED GROUP EXHIBITIONS

- 2017 Sanchez Art Center, Pacifica, CA "What Becomes Home," installation by G.L.U.E.
 2016 BridgeMaker Arts, Richmond, CA. "What Becomes Home," installation by G.L.U.E.
 2010 Kala Institute, Oakland, CA. *Kala Artists Annual*
 2009 Pence Gallery, Davis, CA. "The Uncommon Object"
 Doug Adams Gallery at the Bade Museum, Berkeley, CA. "Mapping Sacred Ground"
 2008 Seattle Art Museum Gallery, Seattle, WA. *Innovation and Imagination: Work from the Kala Art Institute*
 2005 San Jose Institute of Contemporary Art, San Jose, CA. "In the Round"
 2005 Gallery at Thoreau, The Presidio, San Francisco, CA. "Ecovisions"
 2004 Grounds for Sculpture, Hamilton, NJ. *Fossil Topographies* in "Off the Rim"
 2003 Bedford Gallery, Walnut Creek, CA. "The Big Tree Project"

- 2001 Don Soker Gallery, San Francisco, CA. "Summer Group Show" & "Fall Group Show"
Anderson Ranch Arts Center, Snowmass Village, CO. "Faculty Exhibition"
Sanchez Art Center, Pacifica, CA "Unearthed"
Don Soker Gallery, San Francisco, CA. "Winter Group Show, Part 2"
Bedford Gallery, Walnut Creek, CA. "Objects Considered"
600 Townsend Street, San Francisco, CA. "Natural Selections"
- 1999 The Jewish Museum of San Francisco, San Francisco, CA. "Making Change"
Armory Center For The Arts, Pasadena, CA. "Spaces of Nature"
- 1999 Richmond Art Center, Richmond, CA. "Spaces of Nature"
- 1998 SFMOMA Artists Gallery, San Francisco, CA. "Pacific Rim Sculptors Group"

THEATRICAL PERFORMANCE and DESIGN (selected)

- 1986 *Bad Buys, Good Byes*, (in Kala's, "Seeing Time '86") Addison Stage, Berkeley, CA
Deer Rose, play by Tony Pellegrino. Theatre on the Square and Theatre Artaud, San Francisco, CA

RESIDENCIES

- 2001 Visiting Artist Residency, Anderson Ranch Arts Center, Snowmass Village, CO
1998 & 1996 Visiting Artist Residency, Anderson Ranch Arts Center, Snowmass Village, CO
1989 Jerome Foundation Fellowship, Kalà Institute, Berkeley, CA

GRANTS and AWARDS (selected)

- 2002 Creative Work Fund (awarded)
Eureka Fellowship (nomination)
- 1996 Visiting Artist Project Grant, Anderson Ranch Arts Center
- 1993 Guest Artist, California Arts Council, Artist in Community
- 1989 Jerome Foundation Fellowship Award
- 1986 Seeing Time '86, Kalà Institute
- 1986 Critics Circle Award, Scenic Design, Deer Rose

SELECTED PUBLIC COLLECTIONS

- Cleveland Museum of Art. Cleveland, OH
Cleveland Art Association. Cleveland, OH
Decordova Museum. Lincoln, MA

TEACHING APPOINTMENTS AND ARTS EDUCATION EXPERIENCE (selected)

- 1990-2018 **Art Specialist, Grades K-8, Independent Schools**
The Crowden School, Berkeley, CA. Grades 4-8. 2017-2018
Marin Horizon School, Mill Valley, CA. Grades 6-8. 2013-2015
Archway School, Oakland and Berkeley, CA. Grades K-8, 2012-2013
The Head-Royce School, Oakland, CA. Grades 1-6. 1992-1997
École Bilingue de Berkeley (East Bay French-American School) Berkeley, CA. Grades 2-8. 1990-1992
- 2005-2018 **Professional Development Coach, Visual Arts and Digital Arts Integration**
École Bilingue de Berkeley (2015)
Paul Robeson College Preparatory, OUSD-HS (2006-10)
Urban Promise Academy OUSD-MS (2006-07)
- 2006-2009 **Consultant and Animation Designer** for SFMOMA's web-based, multimedia curriculum project, "ArtThink"
- 2005-2006 **Lecturer in Art Education:** California College of the Arts (Spring 2005), Mills College (Spring 2006)
- 1998-2008 **Artist in Residency Teaching K-12**
Oxford School, K-5 BUSD (2001-2008). Jefferson School, Grades 3-5, BUSD. (1998-2005)

SELECTED PUBLICATIONS

- 2011 "The Shape of Sound," *Deep Listening Anthology, Volume Two, Scores from the Community of Deep Listeners*, Deep Listening Publications
- 2010 "What is Art?" in *Artful Teaching: Integrating the Arts for Understanding Across The Curriculum, K-8*, ed. by David Donahue, Jennifer Stuart, Teachers College Press



Artist: Debbie Koppman
Title: Traveling Down International Boulevard
Year: 2018
Location: 39th and International, Fruitvale District, Oakland

Story: Designed in collaboration with Maria Sanchez of the Business Improvement District at the Unity Council, and the owner of Transmatic Transmission. Five of the cars in the historical "timeline" of transportation on International were cars built by the owner, of which he is very proud. Funded by Visit Oakland, with support from the Unity Council.



Artist: Debbie Koppman
Title: Palma Ceia's Magic Gardens
Year: 2018
Location: Palma Ceia Park, Hayward

Story: Designed in collaboration with the City of Hayward, and Hayward Parks and Recreation. This image is one wall of the entire structure; the entire building is covered in the murals. The building sits in a park, in front of an elementary school, and was badly and repeatedly tagged. Neighborhood folks came out one day to help with the preliminary painting. Funded by the City of Hayward.



Artist: Debbie Koppman
Title: Fiesta at La Finca!
Year: 2017
Location: 38th and Foothill, Fruitvale District, Oakland

Story: Designed in collaboration with Maria Sanchez of the Business Improvement District at the Unity Council, and the owners of La Finca, the local tortilla factory. Funded by District 5, Green Wall



Artist: Laurie Polster

Title: *Dragon*

8' x 70'

2018

Medium: Mural facilitation with students

Crowden School, Berkeley, CA

Mural created by 8th grade students facilitated by Laurie Polster, Art Teacher

Description: Dragon snaking through earth, water, fire and wind

PAAC 7-1-19 Item IV



Artist: Laurie Polster
 Photographer: Janet Delaney
The Line of Questioning
 Public Art Installation: sculpture, poem text, photographs
 8' x 20' x 3'
 2012
 Addison Street Windows Gallery, City of Berkeley, CA

Description: Juxtaposing evocative visuals with disparate stories of destruction and regeneration, *The Line of Questioning* focuses on the primordial nature of trees as a metaphor for ecological and social sustainability. Project created in collaboration with photographer Janet Delaney. Design concept, sculpture, text poem by Laurie Polster.



Visual Proposal of Mural Design

Title: "Fabric of St. Columba"

Artists: Debbie Koppman & Laurie Polster

Location: 6401 San Pablo Avenue

Materials and Methods Description

Power wash and prime wall.

Grid wall.

Enlarge gridded drawing of mural design to scale it up onto the wall.

Paint mural, with many sections painted in layers.

When finished, seal wall carefully with several coats of anti-graffiti sealer.



Existing wall of proposed mural site at 6401 San Pablo Avenue, Oakland, CA 94608

Wall dimensions: 10' high x 86.5' long

This wall is in a highly visible location on San Pablo at the intersection with Alcatraz. The long wall gets tagged periodically with graffiti, necessitating ongoing maintenance. As the Church has been pro-active in re-painting the wall to discourage further graffiti, we do not currently have photos of the wall in it's defaced state.



Mural Proposal: "Fabric of St. Columba"

Artists: Debbie Koppman & Laurie Polster

Location: 6401 San Pablo Avenue

Size: 10' x 86.5'

Timeline

The project has already been designed with input from Church community members. We've done community outreach to gather support for the project. As soon as funds are awarded and received, painting can be scheduled, preferably to occur no later than fall of 2019. Once painting is scheduled, we will coordinate with the Church to invite community members for a day of community painting. We anticipate the project would be completed within 3 months of receiving funding.

Preliminary Budget: *Fabric of St. Columba*

Expenses

Artist time = @ 260 hours @ \$50/hr (labor for prepping wall, priming, painting, sealing mural)	\$13,000
Materials	
Primer	150
Power Washer	100
Paint (acrylic)	350
Sealer (anti-graffiti)	700
Insurance (amortized)	<u>200</u>
TOTAL	\$14,500

Income

Green Walls funding from District 1 (committed)	\$ 9,000
Cultural Funding: Individual Artist Project	
Debbie Koppman for our collaborative project (pending)	5,000
St. Columba Church	<u>500</u>
TOTAL	\$14,500

Budget Notes:

Please note: this budget reflects the true costs of this project. We are grateful for the support of \$9000 of Green Walls funding through District 1 Councilmember Dan Kalb. We have submitted an additional grant request through Cultural Arts Individual Artist Project to support this collaborative project. The Church has committed \$500 of support along with volunteer help. They are also committed to helping us raise additional funds in the event that we fall short in our collective grant requests.

Maintenance Plan

Anticipated lifespan of project is 5-10 years. The Church is very proactive in maintaining it's property and will value having the mural sited there and care for it. Artists have agreed to maintain the project for 5 years, or for as long as they reside in the area, in the event that it needs repairing.

We, the people/businesses/community signed below, fully support Debbie Koppman and Laurie Polster's mural project at 6401 San Pablo Avenue:

NAME, ADDRESS

Hamie Porter 622 Alcatraz Oakland 94609
SUTRIF 1412 Alabama St Vallejo 94590
Megaly Krolli 6401 San Pablo Ave Oakland
Mary Amora 6400 San Pablo Ave Okla CA 94608
Kevin Peters 2112 Baker rd Castro Valley Ca 94516
Florence Blackburn 2325 Adeline, Oakland Ca 94607
Jandia Christian 1043 ce 2 St Berkeley Ca 94703
Dolores Maudet 5157 Heavenly Heights Blvd Santa Ca 94803
Joan Davis 1115 ~~Camille~~ St Berkeley ca 94702
Bernardige Joseph 1194 63rd St. Oak 94608
Christa Santet 67 124 Jade Ct. Hercules 94541
Carolyn White 555 Pierce St #306 Albany 94706
Maria Elena Sandoval 4852 Knollcrest Dr. Antioch 94531
Judy Luce 1515 Fairview St. Berkeley 94703
Michiko H. Murillo 3112 Mabel St. Berkeley, CA 94702
J. Taylor Branche 1633 Harrison St. #205 Oakland, CA 94612
Cheryl L. Walker 689 29th St. Oakland, CA 94609
Francine Peters 2112 Baker Rd., Castro Valley, CA 94546
Richard Slevin 1645 Hammon St. Berkeley 94703

We, the people/businesses/community signed below, fully support Debbie Koppman and Laurie Polster's mural project at 6401 San Pablo Avenue:

NAME, ADDRESS

Alexis Johnson 3100 San Pablo Ave #30, Berkeley

Benny Pulcin

Sam Taylor 1340 Las Sainas Way, Unit F, Walnut Creek CA 94597

Brittany Williams " " " "

Luz Marina Ruiz 5824 Occidental Oakland

Laurentien Bizil 2589 Rebecca Dr Pinole 94564

Joan Seyler 6012 BRANN ST. Oakland CA 94605

GJ Pineda ^{Member of} _{St Columba} 8811 Terrace Dr El Cerrito, CA 94530

Joyce Scotland 1901 Oak View Dr Oakland CA 94602

Juan Anderson 165 Wildberry Ct. Vallejo, CA 94591

Meg Bowerman 2476 Burlington St Oakland CA 94602

Susan Wiley 1207 101st Ave Oakland 94603

Ted & Myra Rudolph 1144 54th St Oakland 94608

Ted Rossini 813 26th St Oakland 94607

Femici Robles 1721 Corte Vista St. Brentwood, CA 94513

Kyle Allen 991 60th St. Oak CA 94608

HARRIETT DUNN 4650 BENEVIDES, CA 94602

Coronah Agui 115 Donna Ct. Vallejo CA. 94589

Ketara McNally 2635 Napa St #1339 Vjo ca 94590

We, the people/businesses/community signed below, fully support Debbie Koppman and Laurie Polster's mural project at 6401 San Pablo Avenue:

Abigail Jones
Dwayne McClan
Debra
Jo McFadden
Susan Arzango Bey
Gansa Tchitongbe
Gwen Evans
James Evans
Valli James
Barbara Neal
Louis Lebat
Christina Sells
Lynn S. Lee
Benny Lee
Miss Fannie Pollock
Debra R
Mary Anna
Jodi Henderson
Craig Barton
Stacylary Jorgensen
Khashell Jorgensen

[Signature]
Enacio Galderoz
Alexis Nekey
Sister Eileen Johnson
Alberta Woods
Marian Castelluccio, D.P.
James Scott
Lynn Power
Dorothy Bayzle
Nicola Santoro
[Signature]
Linda Bayzle
Marta Ergo
Mabel [Signature]
Judy House
Dadisi Najib.
Jaden
[Signature]
[Signature]

State Farm General Insurance Company

Businessowners Policy

Prepared: March 1, 2019

Prepared for: POLSTER, LAURIE
657 ALCATRAZ AVE
OAKLAND, CA 94609-1005
Phone: (510) 595-0434 (Home)

Prepared by: Stephanie Canessa
License #: 0C25369
6228 Merced Ave
Oakland, CA 94611-2938
Mailing address: PO Box 13206
Oakland, CA 94661-0206
Phone: (510)339-4444
Email: stephanie.canessa.jtmb@statefarm.com

Quote Effective Date: 03/01/2019

<u>Quote Results</u>	<u>Limit</u>	<u>Premium</u>
Coverages		
Coverage B - Business Personal Property Loss Of Income And Extra Expense	1,000 - Replacement Cost Actual Loss Sustained - 12 Months	267.00
Coverage L - Business Liability - Per Occurrence	1,000,000	134.00
Coverage L - Business Liability - Annual Aggregate Limit	2,000,000	
Products / Completed Operations Liability - Annual Aggregate	2,000,000	
Damage to Premises Rented to You	300,000	
Coverage M - Medical Expenses	5,000	
Policy Deductibles		
Basic Deductible	1,000	
Equipment Breakdown	1,000	
Inland Marine Computer Property Form	500	
Money and Securities	250	
Discounts and Charges		
Business In Residence Premises		(51.00)
Years in Business Discount		(25.00)
Extensions of Coverage		
Accounts Receivable (Off Premises)	5,000	
Accounts Receivable (On Premises)	10,000	
Arson Reward	5,000	
Collapse	Included	
Damage To Non-Owned Buildings From Theft, Burglary Or Robbery	Coverage B Limit	
Debris Removal	25% of covered loss	
Equipment Breakdown	Included	
Fire Department Service Charge	2,500	
Fire Extinguisher Systems Recharge Expense	5,000	
Forgery Or Alteration	10,000	
Glass Expenses	Included	
Increased Cost Of Construction And Demolition Costs (applies only when buildings are insured on a replacement cost basis)	10%	
Inland Marine Computer Property Form	25,000	
Inland Marine Computer Property Loss of Income / Extra Expense	25,000	

This is a sample quote that contains only a general description of some available coverages and limits with an approximate premium, subject to eligibility. It is not a contract, binder of coverage or coverage recommendation. All coverages are subject to the terms, provisions, exclusions, and conditions in the policy and its endorsements. If information used for rating changes or different rates are effective at the time of policy issuance, this rate quote may be revised. If you have any questions, please contact my office.

Quote Results	Limit	Premium
Money And Securities (Off Premises)	2,000	
Money And Securities (On Premises)	5,000	
Money Orders And Counterfeit Money	1,000	
Newly Acquired Business Personal Property (applies only if this policy provides Coverage B - Business Personal Property)	100,000	
Newly Acquired Or Constructed Buildings (applies only if this policy provides Coverage A - Buildings)	250,000	
Ordinance Or Law - Equipment Coverage	Included	
Outdoor Property	5,000	
Personal Effects (applies only to those premises provided Coverage B - Business Personal Property)	2,500	
Personal Property Off Premises	15,000	
Pollutant Clean Up And Removal	10,000	
Preservation Of Property	30 Days	
Property Of Others (applies only to those premises provided Coverage B - Business Personal Property)	2,500	
Seasonal Increase - Business Personal Property	25%	
Signs	2,500	
Valuable Papers and Records (Off Premises)	5,000	
Valuable Papers and Records (On Premises)	10,000	
Total Annual Premium (Minimum premium applies)		325.00
Monthly Premium (Service charge not included)		27.08

Rating Information

Location 1 - 1

Address: 657 Alcatraz Ave
Oakland, CA 94609-1005

County: Alameda

Is this address inside the city limits: Yes

Earthquake zone: 06

Occupancy / Ownership: Business in Residence

Type of business: 403 - Art Galleries & Dealers (including artists)

Year built: 1923

Number of years the applicant has owned and operated the same type of insured business: 20
Construction: Frame

Territory Zone: 68

Subzone: 01

Personal Property: 1000

This is a sample quote that contains only a general description of some available coverages and limits with an approximate premium, subject to eligibility. It is not a contract, binder of coverage or coverage recommendation. All coverages are subject to the terms, provisions, exclusions, and conditions in the policy and its endorsements. If information used for rating changes or different rates are effective at the time of policy issuance, this rate quote may be revised. If you have any questions, please contact my office.



St. Columba Catholic Church

6401 San Pablo Avenue
Oakland, CA 94608

Father Aidan McAleenan
St. Columba Church
6401 San Pablo Avenue
Oakland, CA 94608
510/550-4026

March 1, 2019

To Councilmember Dan Kalb, and to the Public Art Committee,

On behalf of myself and of the larger community directly and indirectly connected to St. Columba, I would like to offer my wholehearted support and enthusiasm for this project, "The Fabric of St. Columba," proposed by Oakland artists Debbie Koppman and Laurie Polster.

The artists met with myself and members of our Pastoral Council, to come up with a design which reflects our vision of ourselves as a faith-based social justice community. We feel the design also offers the larger community a wonderful image of hope, inclusion, and connectedness, values which we feel can be shared by everyone, regardless of faith or lack thereof.

The wall on which the mural will be painted is the exterior of our social hall, sitting directly on San Pablo, highly visible to all passersby, whether on foot, on bike, in cars, or on the bus. Due to its easy access, it has been tagged on numerous occasions. I myself have repainted over the graffiti many times, and look forward to this wonderful visual enhancement which will hopefully deter further activity of this kind.

As the Priest of St. Columba, I have complete authority to approve and give permission for this project; I have signed the Mural Authorization Agreement to this effect. We have also spoken with numerous other members of our surrounding community, and have gathered signatures of support.

We urge you to fund and support this project, and we heartily look forward to working with Debbie and Laurie.

Thank you very much.

Sincerely,

Father Aidan McAleenan

Father Aidan McAleenan
Pastor

(Call 650-248-8355)

MURAL AUTHORIZATION AGREEMENT

This Mural Authorization Agreement ("Agreement") is entered into effective 6-18-19 by and between Laurie Polster & Debbie Koppman (the "Artist") and ROMAN CATHOLIC BISHOP OF OAKLAND COOP. SOLE (the "Property Owner"); (the Artist and the Property Owner together constitute the "Parties").

The Artist wishes to create a public mural (the "Mural") on the ST. COLUMBA HALL exterior wall of the property at 6401 San Pablo Ave., Oakland, California (the "Premises").

The Property Owner owns and controls the Premises, and wishes to authorize the Artist to create the Mural.

Therefore, in consideration of the mutual obligations set forth herein, and intending to be legally bound, the Parties agree as follows:

1. Property Owner hereby authorizes the Artist to create the Mural.
2. Property Owner hereby grants the Artist and its authorized agents all access to and use of the Premises as necessary to create the Mural, including any access and use necessary for the erection and maintenance of scaffolding.
3. Property Owner shall bear no responsibility for any bodily or personal injury to the Artist or Artist team occurring in the course of the creation, repair, alteration, restoration or removal of the Mural, so long as Property Owner takes reasonable care to warn the Artist of any non-obvious risks of personal injury arising from the nature or condition of the Premises.
4. The Artist shall bear no responsibility for any property damage to the Premises occurring in the course of the creation, repair, alteration, restoration or removal of the Mural, so long as the Artist takes reasonable care to avoid causing such damage.
5. The Artist shall use its best efforts to exercise its rights hereunder in such a way as to allow Property Owner, its tenants, invitees and guests, and any other assignees of rights in the Premises, unimpeded use and enjoyment of the Premises.
6. Upon the completion of the Mural, the Artist shall leave the Premises as it found it, except for the addition of the Mural and any improvements incidental to the creation of the Mural.
7. The Artist shall monitor the condition of the completed Mural from time to time, and may repair, alter, restore or remove the Mural at the Artist's sole discretion and to the Artist's sole satisfaction. The Artist shall provide reasonable notice to Property Owner, and shall honor any reasonable request by Property Owner to delay or reschedule work,

before re-entering the Premises for the purposes of repairing, altering, restoring or removing the Mural.

8. The Property Owner shall not repair, alter, restore or remove any portion of the Mural, except if (i) the Property Owner has determined that repair or removal of the Mural is necessary to eliminate an imminent threat of physical injury to persons or property, the Property Owner has notified the Artist of the situation, and the Artist has failed to remedy the situation within a reasonable period after receiving such notice, or (ii) the Property Owner has determined that the wall is to be removed or physically altered in such a way that the Mural cannot remain in place, the Property Owner has notified the Artist of the situation, and the Artist has failed to remove the Mural within 100 days of receiving such notice. The Artist shall bear reasonable costs of any work performed on or in connection with the Mural by the Property Owner pursuant to this paragraph.

9. If either party shall desire or be required to give notice to the other, such notice shall be given in writing, via prepaid U.S. certified or registered postage address to recipient as follows:

Property Owner
Name: ROMAN CATHOLIC BISHOP OF OAKLAND CORP. SOLE.
Address: FR. ARDAN McALEEVAN
6401 SAN PABLO AVE, OAKLAND CA 94608.
Telephone: (510) 654-7600

Grantee
Name: Debbie Keppman
Address: 2307 Hamata St. Oakland 94602
Telephone: 510/482-1818
Laurie Polster
657 Alcatraz Ave. Oakland 94609
510/595-0434

10. This Agreement is governed by and construed in accordance with the laws of the State of California.

The Parties are executing this Agreement as of the date stated in the introductory clause above.

ARTIST

Debbie Keppman 6-18-19
Signature Date
Debbie Keppman
Print Name:

PROPERTY OWNER

Fr. Ardan McAleevan
Signature Date
6/18/19
Print Name:

Laurie Polster 6-18-19
Laurie Polster



Cultural Arts Programs

Economic & Workforce Development

Public Art Advisory Committee Proposal Review Form

Date 6-12-19
 Artist(s) Debra Koppman
 Project Contact Debra Koppman
 Organization (if applicable) Diamond Library (Sarah Hodgson, branch manager)
 Phone # 510/462-1818 Email debkoppman@gmail.com
 Street Address 2307 Damuth St.
 City Oakland State CA Zip 94602
 Proposed Site of Project (Address/Cross St. with physical details) DIMOND LIBRARY, 3565 FRUITVALE AVE
 Name of Property Owner, Proposed Location OAKLAND PUBLIC LIBRARY
 City Council District of Proposed Location DISTRICT 4

Attachments Checklist

Attach a separate document to address the following items, bundled together in a single electronic file:

1. Review Form (this page)
2. Project Narrative
3. Artist Resume
4. Examples of Past Work
5. Visual Proposal
6. Materials and Methods Description
7. Photos of Site
8. In-Situ Mockup
9. Timeline
10. Budget
11. Maintenance Plan
12. Community Outreach / Support Documentation
13. Insurance Documentation
14. Permission(s)- Private Property Owner or City
15. Waiver of Proprietary Rights for Artwork Placed on City Property (if applicable)

Project Narrative

Through this project, tentatively titled: ***Dimond's Magic Carpet***, I hope to contribute to the revitalization of the Dimond Library, and help to convert it from an unremarkable, white box, into a visually dynamic destination unto itself. Through the collaborative creation of two murals on either side of a now nondescript 10'x 10' cement support panel, the project will help to improve the overall visual appearance and economic viability of the Dimond neighborhood, and will create a connection between several existing murals, on the Fruitvale wall of Farmer Joe's, on the PG& E Substation wall on MacArthur at Lincoln, and on the Champion Street strip, next to our relatively recently-installed transit plaza.

The Dimond Library sits at the far end of the Dimond Business District, and already functions as a valuable community magnet, in spite of its dull architecture. This project will help animate the building itself, and project energy, color, and possibility outward towards the community, drawing visitors and residents to the site, and to the rich world within. The library recently underwent an internal "facelift," reopening last July 2018, with brand new carpets, furniture, and interior design. The building was also repainted on the outside, and now has one intense orange wall, similar to the façade of the Oakland Museum. This project will additionally contribute to the overall revitalization of the library, visually suggesting the internal richness within, while highlighting its importance to the life of the neighborhood.

The project will be undertaken on the large blank cement support wall directly in front of the library, up to the point where it connects to a much higher second-story flat wall. The dimensions of this space are 10'3" high x 10'5" wide. Both the surface facing outward towards Fruitvale, as well as the library-facing walls will be painted, to mimic mosaic tile. The design was created in collaboration with Dimond Library staff, using a children's book, *Zorah's Magic Carpet* as the point of inspiration. As Zorah, a poor farmer's wife, learns to travel to marvelous places with the help of her magic carpet and the strength of her imagination, Dimond Library's staff has pointed me to the images from books which have helped their imaginations soar. ***Dimond's Magic Carpet*** will hopefully function as a non-literal invitation to enter the magic world of shared experiences the books within this building offer.

As with previous projects I have completed, it is anticipated that there will be a great deal of community participation, in the ongoing dialogue I maintain with interested passers-by. This will contribute to the building of community and overall goodwill between residents, merchants, passersby, patrons of the library, and library staff. At the same time, the finished murals' presence then also helps to mitigate blight, and to improve the economic possibilities for the business district as a whole.

DEBRA KOPPMAN, Doctor of Arts

2307 Damuth St. Oakland, CA 94602, 510/482-1818 debkoppman@gmail.com

www.debrakoppman.com

EDUCATION:

DOCTOR OF ARTS, Studio Arts, New York University, 1993
Emphasis in painting, printmaking, criticism, aesthetics

MASTER OF ARTS, Fine Arts, University of California, Berkeley 1982

BACHELOR OF ARTS, Fine Arts, University of California, Berkeley 1980

SELECTED MURALS

- 2019 DIMOND RIVER FLOWS TO MAPLE, Oakland, California
- 2019 GRAND LAKE'S HIDDEN TREASURES, Oakland, California
- 2018 JAZZIN' IT UP AT SOON'S LOUNGE, Oakland, California
- 2018 TRAVELING ON INTERNATIONAL BOULEVARD, Oakland, California.
- 2017 PALMA CEIA'S MAGIC GARDEN, Hayward, California.
- 2017 FIESTA EN LA FINCA! La Finca Tortilleria, Oakland, California.
- 2017 PLANTS ON PLANTERS, Laurel District, Oakland, California.
- 2016 SAUSAL CREEK TO THAILAND, Dimond Café, Dimond District, Oakland
- 2016 SEQUOIA'S RAINBOW ROAD, Sequoia Elementary School, Dimond District, Oakland
- 2016 ENCHANIMALS! In collaboration with Sequoia Elementary School students, Dimond District, Oakland
- 2016 THREADS OF SAN PABLO, City of San Pablo, California (3 panels)
- 2015 WELCOME TO SAN PABLO! City of San Pablo, California (2 panels)
- 2015 DIMOND RIVER, Dimond District, Oakland, California
- 2014 THE BUDDHA'S 8 FOLD PATH, (directed 62 6th grade English/History students) Bret Harte Middle School.
- 2014 I LOVE DIMOND, MacArthur and Lincoln, Dimond District, Oakland, California
- 2013 YOU'RE HUNGRY, EAT HEALTHY, (directed Advanced Art Students, 6th – 8th grade) Bret Harte Middle School.
- 2012 RAINBOW FISH, (directed 90 3rd graders) Glenview Elementary.
- 2012 SEQUOIA'S HIDDEN JEWELS, Mosaic Mural, in collaboration with the Sequoia Elementary school community. Lincoln and Scenic, Dimond District, Oakland, California.
- 2011 WELCOME TO FRUITVALE, 880 & Fruitvale, 12 Pillars. Commissioned by The Unity Council.
- 2011 DIMOND'S HIDDEN JEWELS, in collaboration with Amanda Lockwood and Sequoia Elementary School students. Fruitvale Avenue and MacArthur, Dimond District, Oakland, California.
- 2008 WHAT'S COOKIN', GOOD LOOKIN'? Designed and facilitated, in collaboration with Amanda Lockwood. Healthy Start After-School Program, Sequoia Elementary. (Painted by 4th and 5th graders.)
- 2008 IMAGINE, (with 6th, 7th, and 8th grade art students) Bret Harte Middle School, Oakland, California
- 2007 PLANTS AND HOPES RISING, Sequoia Elementary, Oakland, California
- 2006 PHOENIX RISING, BRET HARTE RISING, Bret Harte Middle School, Oakland, California
- 2006 QUETZALCOATL, (with 6th, 7th, and 8th grade art students) Bret Harte Middle School, Oakland, California
- 2005 THE FOUR ELEMENTS (with 6th, 7th, and 8th grade art students) Bret Harte Middle School, Oakland, California

SELECTED TEACHING EXPERIENCE:

1998 - 2016 ARTIST-IN-RESIDENCE
Sequoia Elementary School, Oakland, California

2012 - 2013 ADJUNCT PROFESSOR, SCHOOL OF ARTS AND SCIENCES: Teaching Visual Art
Brandman University, Walnut Creek, California

2007 - 2009 FACULTY, DEPARTMENT OF ART AND PATHWAYS PROGRAM
Dominican University, San Rafael, California

1999 - 2005 INSTRUCTOR
University of California, Berkeley, Extension

1995 VISITING PROFESSOR, DEPARTMENT OF ART
Universidad Católica, Lima, Peru

1993 - 1997 PROFESSOR, DEPARTMENT OF GRADUATE STUDIES
Academy of Art College, San Francisco, California

1993 INSTRUCTOR, DEPARTMENT OF ART
Los Medanos College, Pittsburg, California

1991 VISITING PROFESSOR
Escuela Nacional de Bellas Artes, Managua, Nicaragua

1987-1989 PROFESSOR, DEPARTMENT OF ART AND DESIGN
Universidad de Las Américas, Puebla, México

SELECTED SOLO/2-PERSON EXHIBITIONS:

2013 SCULPTURE AND FURNITURE
Union Bank, San Francisco, California

2012 A CHANCE TO PLAY (with Luz Marina Ruiz)
San Pablo Arts Center, San Pablo, California

2009 I SAW THE STRANGEST THINGS
Humanities Center Gallery, Cal State Chico, Chico, California

2008 13 WISHES FOR 13 WITCHES
1870 Gallery, Belmont, California

2006 WERNER GLINKA & DEBRA KOPPMAN Crockett Contemporary Art, Crockett, CA

2005-2006 IN THE SANCTUARY
San Jose Museum of Quilts and Textiles, San Jose, California

1998 SUEÑOS SUREÑOS (SOUTHERN DREAMS): WORKS ON PAPER
Peruvian/North American Cultural Institute, Lima, Peru

1998 TO THE PACHA MAMA: WORKS ON PAPER Fulbright Commission, Lima, Peru

1995 MIXED MEDIA PAINTINGS AND SCULPTURES Banaker Gallery, SF , California

SELECTED FELLOWSHIPS/GRANTS/AWARDS:

FULBRIGHT SCHOLAR LECTURING AWARD IN PERU
CALIFORNIA ARTS COUNCIL, ARTIST-IN-RESIDENCE
OUTSTANDING OAKLAND ARTS EDUCATOR, CALIFORNIA STATE SENATE
WOMEN'S STUDIES COMMISSION DOCTORAL DISSERTATION AWARD, NewYork University

LANGUAGES:

Native-level fluency in Spanish, conversational in Portuguese, Hebrew.

Examples of Past Work



I Love Dimond MacArthur & Lincoln, Oakland



Palma Ceia's Magic Gardens

Hayward, California



Fiesta en La Finca!

38th and Foothill

Fruitvale, Oakland



Traveling on International

39th and International

Fruitvale, Oakland



Grand Lake's Hidden Treasures

Grand Lake, Oakland

Visual Proposal



Dimond Library - 3565 Fruitvale Avenue, Dimond District, Oakland, 94602

Materials and Methods

This project will be painted, using high quality NovaColor acrylic paint. The walls will be prepped, primed, and then sealed with 4 coats of Sheercoat Varnish to protect against UV light, pollution, and graffiti damage.

Photos of Site



In-Situ Mockup





Timeline

The project is budgeted to take approximately 100 hours. If I were able to work 40 hours/week on the project, it would take approximately 3 weeks to complete. However, this timeline is weather and schedule dependent, and will vary depending on other projects I am currently negotiating. I would like to promise to complete the project within 3 months of receiving the licensing agreement.

Budget

Artist's Hours: 100 hours @ \$42/hour	\$ 4200
Materials	\$ 350
Maintenance	\$ 450
Total	\$ 5,000

Funding Sources:

Friends of Dimond Library promised	\$ 5,000
Total	\$ 5,000

Maintenance Plan

Debra Koppman promises to jointly work together with the Friends of the Dimond Library to insure that the mural is well-maintained. Other murals of mine in the neighborhood, including painted and mosaic tiled murals, have not had any serious tagging problems. The longest-standing mural on the wall of Farmer Joe's Marketplace, has been in good shape for 8 years, with only the slightest maintenance needed. Other murals have not been tagged, even when the neighboring spaces and sidewalks have been severely tagged.

Letter Regarding Maintenance of Diamond's Magic Carpets:

For 2 murals to be painted on the back-to-back walls of the non-structural 10' x 10' in front of Diamond Public Library.

Murals to be painted by artist Debra Koppman.

Maintenance for these murals with special regard for removal of graffiti, will be undertaken for a minimal period of (5) years after completion by Debra Koppman, in collaboration with the Friends of the Diamond Library. (It is expected that the life of the murals will be closer to 25 years; assuming Debra Koppman remains alive, she will continue to maintain these murals.)

Members of the Friends of the Diamond Library are frequently on the premises. We will promise to be vigilant over the murals. In the case of graffiti, we will first inform Debra Koppman of the problem. If she is unavailable or unable for some reason to continue the maintenance of the murals, we will promise to keep them clean.

The murals will be sealed with (4) coats of a highly protective varnish. We will be in possession of the matching product which removes graffiti, in the case that this becomes necessary. We understand that instructions for removal of graffiti is printed on the outside of said container.

Signed:

Debra Koppman 11-14-18 6-14-19

Debra Koppman, Artist

Karen P. Long 5/11/19

For Friends of the Diamond Library



June 14, 2019

To the Public Art Commission:

I have been working with local artist Debbie Koppman to bring a double-sided mural to the front of the Dimond Branch of the Oakland Public Library since March 2015.

Debbie met with my staff, solicited ideas and created two images incorporating all of the suggestions made at that meeting. We presented these images in the branch display case for one month and asked for public comment. The drawings were well received and we have the full support of the Friends of the Dimond Branch Library.

We are very pleased with the designs and excited to have these images adorn our building. Dimond branch was remodeled in 2017 with new carpet, paint, updated furniture and technology. The addition of two beautiful murals outside the branch will brighten the building and draw attention to this neighborhood gem.

I am committed to making this project happen and ask the Public Art Commission to give their wholehearted support. Thank you.

Sincerely,

A handwritten signature in black ink that reads "Sarah Hodgson". The signature is fluid and cursive, with a long horizontal line extending to the right.

Sarah Hodgson
Dimond Branch Library Manager
3565 Fruitvale Ave.
Oakland, CA 94602
shodgson@oaklandlibrary.org



DIMOND IMPROVEMENT ASSOCIATION

Involvement Builds Community

P.O. Box 27355
Oakland, CA 94602
dia@dimondnews.org
www.dimondnews.org

January 19, 2017

To the Public Art Commission:

We understand local artist Debbie Koppman is working with the Dimond Library to create a new mural project on the front of the Dimond Library.

We are very excited to work with Debbie on this new project, and are especially pleased at the opportunity she will offer for community members to participate in the creation of some of the tiles.

Debbie has successfully completed several mural projects in our neighborhood, and completed several more at our local elementary school. We are happy to offer our strong support for this project, which will contribute to our ongoing Dimond neighborhood improvement.

We ask the Public Art Commission to give their strong support to this project as well.

Thank you so much.

Sincerely,

Julie Johnson
Dimond Public Art
Dimond Improvement Association



May 21, 2019

The Oakland Public supports the proposal put forth by Debra Koppman, to paint a mural on the Dimond Library, and grants permission per the following:

Permission is hereby granted to Debra Koppman and their employees, contractors, and agents to enter upon certain property owned by the City located at 3565 Fruitvale Ave, Oakland, California, for the sole purpose of painting a mural on the exterior facing wall. The mural shall substantially conform to the rendering in the Final Artwork Proposal as reviewed and approved by the Public Art Advisory Commission. Licensee and Artist shall perform the Artwork in accordance with the Project Specifications. In order to respect the residents in the neighborhood, Licensee shall, at all times, minimize noise and bright lights from the movement of trucks, trailers, and any equipment on the site, especially during the hours of 9 p.m. and 7 a.m. No generators may be operated on this site.

The Friends of the Dimond Library are responsible for maintaining the mural.

Changes, alterations, modifications, and removal of the mural must be made in collaboration with the Oakland Public Library and the City of Oakland.

A handwritten signature in dark ink, appearing to read "Jamie Turbak".

Jamie Turbak

Library Director



CERTIFICATE OF LIABILITY INSURANCE

DATE (MM/DD/YYYY)
06/17/2019

THIS CERTIFICATE IS ISSUED AS A MATTER OF INFORMATION ONLY AND CONFERS NO RIGHTS UPON THE CERTIFICATE HOLDER. THIS CERTIFICATE DOES NOT AFFIRMATIVELY OR NEGATIVELY AMEND, EXTEND OR ALTER THE COVERAGE AFFORDED BY THE POLICIES BELOW. THIS CERTIFICATE OF INSURANCE DOES NOT CONSTITUTE A CONTRACT BETWEEN THE ISSUING INSURER(S), AUTHORIZED REPRESENTATIVE OR PRODUCER, AND THE CERTIFICATE HOLDER.

IMPORTANT: If the certificate holder is an ADDITIONAL INSURED, the policy(ies) must have ADDITIONAL INSURED provisions or be endorsed. If SUBROGATION IS WAIVED, subject to the terms and conditions of the policy, certain policies may require an endorsement. A statement on this certificate does not confer rights to the certificate holder in lieu of such endorsement(s).

PRODUCER Khoe & Associates 328 15th St Oakland CA 94612 Phone: 510-465-3093 Fax: 510-580-9470	CONTACT NAME: PHONE (A/C, No, Ext): _____ FAX (A/C, No): _____ E-MAIL ADDRESS: _____ INSURER(S) AFFORDING COVERAGE INSURER A: THE HARTFORD INSURANCE INSURER B: _____ INSURER C: _____ INSURER D: _____ INSURER E: _____ INSURER F: _____
----------------------------------------------------------------------------------------------------------------------	------------------------------------------------------------------------------------------------------------------------------------------------------------------------------------------------------------------------------------------------------------------------------------

COVERAGES **CERTIFICATE NUMBER:** **REVISION NUMBER:**

THIS IS TO CERTIFY THAT THE POLICIES OF INSURANCE LISTED BELOW HAVE BEEN ISSUED TO THE INSURED NAMED ABOVE FOR THE POLICY PERIOD INDICATED. NOTWITHSTANDING ANY REQUIREMENT, TERM OR CONDITION OF ANY CONTRACT OR OTHER DOCUMENT WITH RESPECT TO WHICH THIS CERTIFICATE MAY BE ISSUED OR MAY PERTAIN, THE INSURANCE AFFORDED BY THE POLICIES DESCRIBED HEREIN IS SUBJECT TO ALL THE TERMS, EXCLUSIONS AND CONDITIONS OF SUCH POLICIES. LIMITS SHOWN MAY HAVE BEEN REDUCED BY PAID CLAIMS.

INSR LTR	TYPE OF INSURANCE	ADDITIONAL INSURED	INSURER	POLICY NUMBER	POLICY EFF (MM/DD/YYYY)	POLICY EXP (MM/DD/YYYY)	LIMITS
A	<input checked="" type="checkbox"/> COMMERCIAL GENERAL LIABILITY <input type="checkbox"/> CLAIMS-MADE <input checked="" type="checkbox"/> OCCUR GEN'L AGGREGATE LIMIT APPLIES PER: <input type="checkbox"/> POLICY <input type="checkbox"/> PRO-JECT <input type="checkbox"/> LOC <input type="checkbox"/> OTHER: _____	X		57SBMDO5846	05/11/2019	05/11/2020	EACH OCCURRENCE \$ 1,000,000 DAMAGE TO RENTED PREMISES (Ea occurrence) \$ 1,000,000 MED EXP (Any one person) \$ 10,000 PERSONAL & ADV INJURY \$ 1,000,000 GENERAL AGGREGATE \$ 2,000,000 PRODUCTS - COMPOP AGG \$ 2,000,000
	AUTOMOBILE LIABILITY <input type="checkbox"/> ANY AUTO <input type="checkbox"/> OWNED AUTOS ONLY <input type="checkbox"/> SCHEDULED AUTOS <input type="checkbox"/> HIRED AUTOS ONLY <input type="checkbox"/> NON-OWNED AUTOS ONLY						COMBINED SINGLE LIMIT (Ea accident) \$ BODILY INJURY (Per person) \$ BODILY INJURY (Per accident) \$ PROPERTY DAMAGE (Per accident) \$
	<input type="checkbox"/> UMBRELLA LIAB <input type="checkbox"/> OCCUR <input type="checkbox"/> EXCESS LIAB <input type="checkbox"/> CLAIMS-MADE DED: _____ RETENTION \$: _____						EACH OCCURRENCE \$ AGGREGATE \$
	WORKERS COMPENSATION AND EMPLOYERS' LIABILITY ANY PROPRIETOR/PARTNER/EXECUTIVE OFFICER/MEMBER EXCLUDED? (Mandatory in NH) If yes, describe under DESCRIPTION OF OPERATIONS below	N/A					PER STATUTE OTH-ER E.L. EACH ACCIDENT \$ E.L. DISEASE - EA EMPLOYEE \$ E.L. DISEASE - POLICY LIMIT \$

DESCRIPTION OF OPERATIONS / LOCATIONS / VEHICLES (ACORD 101, Additional Remarks Schedule, may be attached if more space is required)

The City of Oakland, their respective City Council Members, Officers, Directors, Employees, and Volunteers are named as Additional Insured.

CERTIFICATE HOLDER City of Oakland, City Council Offices, Frank H. Ogawa Plaza, 2nd Floor, Oakland, CA 94612	CANCELLATION SHOULD ANY OF THE ABOVE DESCRIBED POLICIES BE CANCELLED BEFORE THE EXPIRATION DATE THEREOF, NOTICE WILL BE DELIVERED IN ACCORDANCE WITH THE POLICY PROVISIONS. AUTHORIZED REPRESENTATIVE
----------------------------------------------------------------------------------------------------------------------------------	----------------------------------------------------------------------------------------------------------------------------------------------------------------------------------------------------------------------------

© 1988-2015 ACORD CORPORATION. All rights reserved.

ACORD 25 (2016/03)

The ACORD name and logo are registered marks of ACORD

Cultural Affairs Division
Economic & Workforce Development



Waiver of Proprietary Rights for Artwork Placed upon City Property

The provisions of this paragraph shall apply to modify Artist's rights of attribution and integrity as set out in the Visual Artists Rights Act, 17 U.S.C. §§ 1074A and 1074(d) ("VARA"), the California Art Preservation Act, Cal. Civil Code §§ 987 and 989 ("CAPA"), and any rights arising under United States Federal or state law or under the laws of another country, that convey rights of the same nature as those conveyed under VARA and CAPA, as against the City or (insert) "City" and its agents.

The City has the absolute right to change, modify, destroy, remove, relocate, move, replace, transport, repair or restore the (describe artwork/project: mural, sculpture, etc., and medium):

2 MURALS - EXTERIOR NOT STRUCTURAL WALL
DOUBLE-SIDED (one on each side of 10'x10' Wall)

Entitled (title of work):

Diamond's Magic Carpets

and located at (insert city site, including interior location if applicable):

Diamond Branch, Oakland Public Library
3565 Fruitvale Ave, Oakland CA 94602

In whole or in part, in City's sole discretion.

Artist's Address for Notice (insert artist's name and complete address): DEBRA KOPPMAN

2307 Damuth St,
Oakland CA 94602

Artist bears the sole responsibility for providing the City with any changes to the Artist's address for Notice. Notice of changes must be mailed to the Public Art Program, Cultural Arts & Marketing, 1 Frank E. Oguwa Plaza, 9th Floor, Oakland, CA 94612 and the Client Department with jurisdiction over property. (insert Address of Client Department with jurisdiction over property)

Oakland Public Library, 125 14th St, Oakland

Debra Koppman - 11-14-2018, 6-19-19

Artist Signature / Date

City Administrator Designated Client Department Representative (Printed Name / Signature / Date)

This document is posted online at:

<https://www2.oaklandnet.com/Government/city-administration/6/EconomicDevelopment/PublicArt/index.htm>

ITEM VI AGENDA REPORT

To: Public Art Advisory Committee
Attn: Bryan Cain and Charmin Roundtree-Baaqee, Co-chairs
From: Kristen Zaremba, Public Art Program
Date: July 1, 2019
RE: Oak Knoll Public Art in Private Development Program Plan Introduction

SUMMARY

Staff requests the Public Art Advisory Committee (PAAC) receive a report on the Oak Knoll Development Public Art Plan, and provide preliminary comments for the artworks proposed for placement in the public right of way, in accordance with Oakland Municipal Code Chapter 15.78 Public Art for Private Development.

BACKGROUND

In 2016, Oak Knoll Venture Acquisitions commissioned a public art master plan to comply with the municipal code requirement for nonresidential development to contribute 1.0 percent and residential development to contribute 0.5 percent of building development costs for public art at the Oak Knoll development site, located in council district 7. The public art program for Oak Knoll includes a five public art installations throughout the site. Artists were selected through a competitive selection process for each opportunity. The applicant has submitted preliminary conceptual designs for each artwork on schedule, and will submit final documents for each project on private property, as plans are finalized. Additionally, the City requires that public art projects intended for placement on City property or within the public right of way be reviewed and approved by the Public Art Program and Public Art Advisory Committee prior to proceeding with all other City permitting requirements.

Staff have determined that two of the five projects reviewed will ultimately reside on City property and therefore will require review by the PAAC. The first project to be constructed, designed by artist Bruce Tomb as part of the Rifle Range Creek Bridge development, will commence construction shortly. Due to time constraints, a full presentation regarding that project will be scheduled for a future PAAC meeting. The second project requiring PAAC review and approval is by artist Yoshikawa Wright, for the Oak Knoll Creekside Entry Park, which will be visible from Mountain Boulevard. Review of that artwork proposal will be presented at a later date. These artworks to be placed on City property will be documented through permits for improvements in the public right of way, and are anticipated to remain the property of and be maintained by either the Home Owners Association or Community Facilities District established to support the development. Agreements for ongoing maintenance for the artwork placed in the Public Right of Way will be developed after design approval, prior to installation.

If any project cannot be realized to comply with the all the Oakland Public Art Ordinance and Oakland building codes, the applicants have the option to propose an alternate artwork and/or location, or to make an in-lieu contribution to the Public Art Project Account, prior to issuance of a Certificate of Occupancy from the City for each project.

**Cultural Affairs Division
Economic & Workforce Development Department**



ACTION REQUESTED

Staff requests the Public Art Advisory Committee (PAAC) receive a report on the Oak Knoll Development Public Art Plan, provide preliminary comments for the artworks proposed for placement in the public right of way, in accordance with Oakland Municipal Code Chapter 15.78 Public Art for Private Development; and authorize staff to proceed with facilitation of the development of a draft agreement for ownership responsibilities and ongoing maintenance of all artwork placed in the Public Right of Way.

Respectfully submitted,

A handwritten signature in blue ink, appearing to read "K. Zaremba".

Kristen Zaremba, Public Art Coordinator



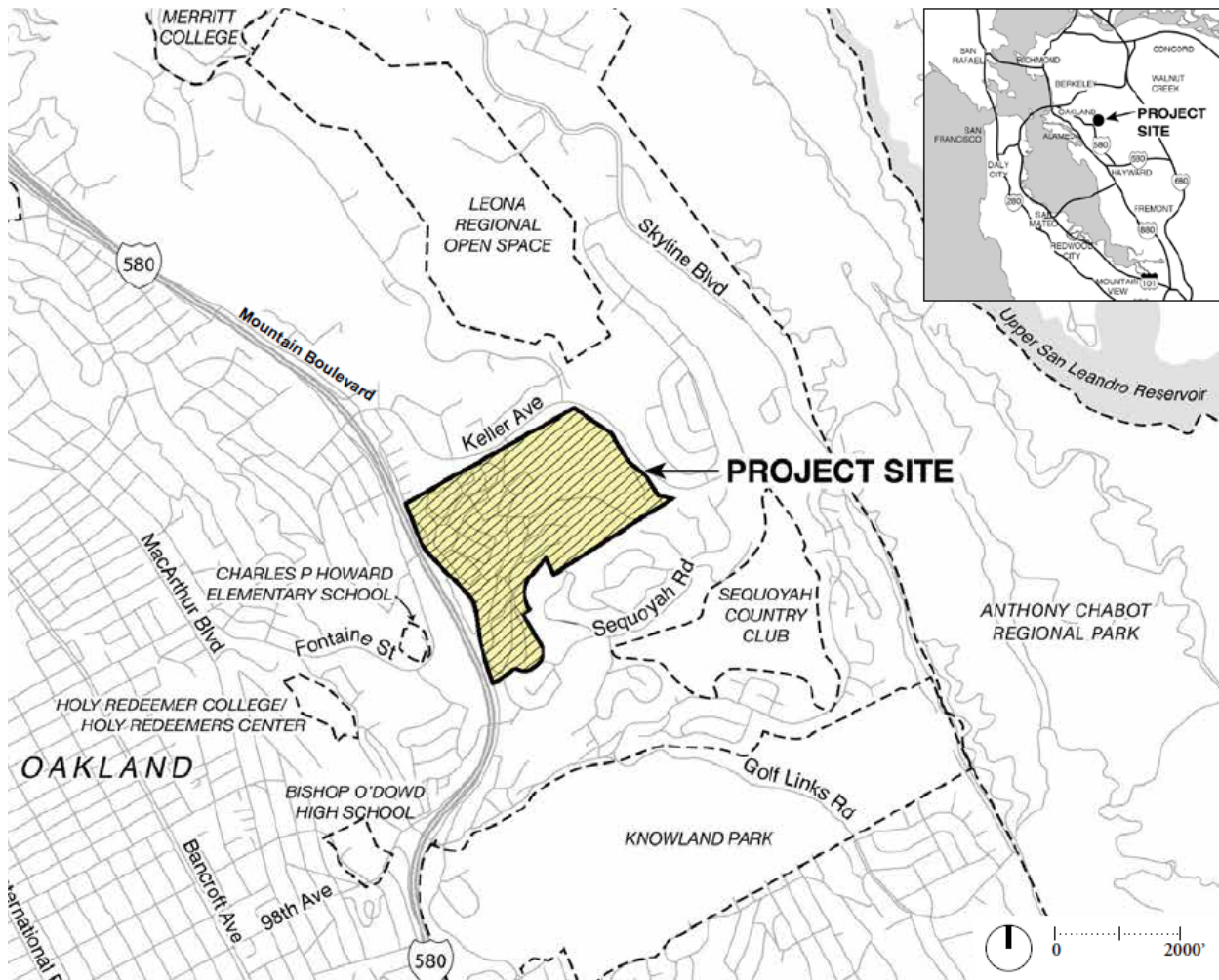
INTRODUCTION

AND

PUBLIC ART SUMMARY

Project Site

Oak Knoll is located in a largely residential setting in the East Oakland hills, east of I-580, nine miles from downtown Oakland, and twelve miles from the Bay Bridge. It is bounded by Mountain Blvd. on the west, Keller Avenue to the north and east, and Sequoyah Road to the south. The site consists of 186 acres of the former Naval Medical Center Oakland, which was decommissioned in 1992. It is surrounded by multi-family residential complexes on the west, north, and east, with upland hillside single family homes on the east and south.



Project Features

The community is planned as a walkable collection of neighborhoods anchored by a village commercial center, parks, the relocated and rehabilitated Club Knoll, and natural accessible open space. The primary landscape features around which the land plan is shaped is the Rifle Range Creek and the surrounding upland areas to the north, south, and east of the Creek. Neighborhoods are woven together through an extensive system of trails and carefully designed streetscapes.

The project is an integrated community plan of 918 residential units of varying types, 72,000 square feet of neighborhood commercial, a 14,000-square-foot community center, and approximately 85 acres of open space parks, including the Oak Woodland adjacent to the daylighted and restored Rifle Range Creek.





OAK KNOLL COMMUNITY PUBLIC ART SUMMARY

In April 2016, Oak Knoll Venture Acquisitions commissioned the creation of a public art master plan for the proposed Oak Knoll Community, located at the former Naval Medical Center, Oakland, California. The stakeholders discussed budget obligations, potential sites, public access, and the artist selection process. The public art master plan and accompanying website were launched in August 2016, identifying five sites that would employ the call for entry process to seek qualified artists.

Requests for qualifications (RFQs), with supporting documentation, were published on a variety of nonprofit websites such as the California Arts Council, San Francisco Arts Commission, Berkeley Art Center, and Pro Arts. They were also published on for-profit sites such as the Public Artist and Artlist and mailed to arts organizations throughout the Bay Area.

CaFE, an online service that provides a repository for artists' RFQ application materials, facilitates selection panel review and scoring, and distributes RFQs to artists who have previously used their services was used for all Oak Knoll Community sites. The artist selection process was conducted from September 2016 to June 2017.

Site1: Oak Knoll Oak Woodland

The Oak Woodland is a 120-foot-wide by 930-foot-long natural area adjacent to Rifle Range Creek that will be preserved during development. A footpath of decomposed granite will be installed through the length of the woodland parallel with the creek. The footpath will connect to a pedestrian bridge at the south and a community center at the north.

The RFQ, open to professional artists residing in California, sought people who would create permanent art that respects and takes advantage of the natural setting of the woodland using materials that would be permanent, durable, weather resistant, and low maintenance. Art value: \$255,000; art budget: \$230,000.

David Duskin from Petaluma, Yoshikawa Wright from Los Angeles, and a team of Jeanine Centuori and Russell Rock from Los Angeles were selected to create proposals for the Oak Woodland.

Oak Woodland Selection Panel:

Pamela Baker—community representative, Eastmont Hills

Barbara Foster—artist and community representative, Oak Knoll

Philip Linhares—independent curator, retired curator of art, Oakland Museum

Nancy Selvin—sculptor, lecturer, public art artist, member of the Alameda County Public Art Advisory Committee.

Chris Hall—principal architect for Hart Howerton

David Soyka—Oak Knoll Venture Acquisitions/Suncal

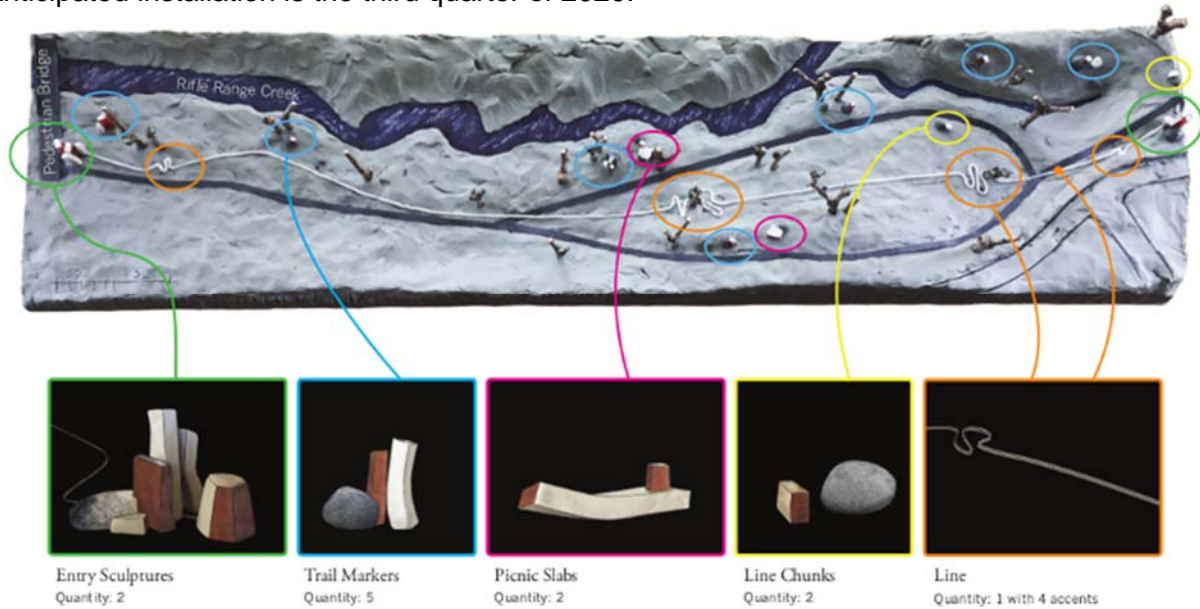
Philip Dow—public art consultant, sculptor, community representative, Oak Knoll

David Duskin was awarded the commission. David was trained as an artist, blacksmith, and metal fabricator. Currently he works on both public and private commissions and teaches once a week at Academy of Art University in San Francisco. While his work includes both traditional sculpture and architectural metalwork, his focus is on conceptually driven art in which the work and the site collaborate. He has installed large-scale work in upstate New York and floating

work in the San Francisco Bay, establishing successful relationships with architects, engineers, and city and county officials.

David's contract was signed in August 2017 and activated in April 2018. He is currently revising his initial design to accommodate changes in the woodland trail and considering expanding it to include additional opportunities along an adjacent multi-use pathway. A final design, embedded into WRA Environmental Consultants' construction documents, should be submitted to Oak Knoll Venture Acquisitions in June of 2018. Once it's approved, the City of Oakland Public Art Checklist can be completed and submitted for staff review.

Anticipated installation is the third quarter of 2020.



Duskin, Oak Woodland Site Proposal



Duskin, Oak Woodland Entry Sculpture

Site 2: Oak Knoll Creekside Entry Park

The two-acre park is at the primary entrance to the Oak Knoll Community, between Mountain Blvd, Creekside Parkway and Rifle Range Creek. The new park will adjoin the restored creek and will be landscaped with a native California palette.

The RFQ, open to professional artists residing in California, sought people who would create permanent art inspired by the experiences of those who practiced healing arts at the Naval Medical Center. The art could be composed of landscape, hardscape, and/or three-dimensional forms, using materials that would be permanent, durable, weather resistant, and low maintenance. Art value: \$222,000; art budget: \$200,000.

Yoshikawa Wright of Los Angeles, James Dinh of Los Angeles, and a team of Steve Gillman and Debra Singer of Oakland were selected to create proposals for the park.

Creekside Entry Park Panel:

Sandi Lotter—two tours of duty in the Navy Nurses Corp at the Oak Knoll Hospital

Tamara Thompson—community representative, King Estate

Jack Stone—artist and community representative, Oak Knoll

Diane Zuliani—fine art curator, art faculty member at Chabot College

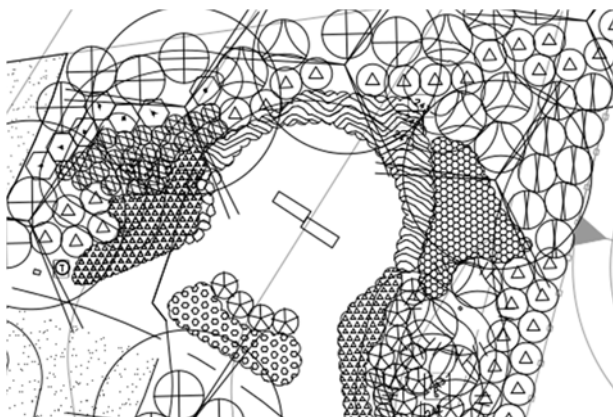
Chris Hall—principal architect for Hart Howerton

David Soyka—Oak Knoll Venture Acquisitions/Suncal

Philip Dow—public art consultant, sculptor, community representative, Oak Knoll

Yoshikawa Wright was awarded the commission. Yoshikawa is the recipient of numerous national sculpture awards. After graduating from the University of Colorado, Boulder, he apprenticed as a stone sculptor in the stone quarries of Shodoshima, Japan. Some highlights of his career include creating a Memorial Arch for the Los Angeles Fallen Firefighters Memorial, large travertine water walls for the five-star Pelican Hill Resort in Newport Beach, and water sculptures for Wolfgang Puck's Spago in Beverly Hills and his Chinois restaurant in Las Vegas.

Yoshikawa's contract was signed in September 2017 and activated in April of 2108. However, he has already been working closely with PGA Landscape Architects of Oakland on how to integrate his design with their landscape ideas. The drawings below reflect that collaboration. Refinements to his design should be completed by June 2018 and submitted to Oak Knoll Venture Acquisitions for final approval. The City of Oakland Public Art Checklist should be completed by late 2019. Installation is anticipated for late 2020.



Creekside Entry Park Sculpture Site 3



Yoshikawa, Connection 3 maquette



Site 3: Oak Knoll Retail Village Plaza

The Oak Knoll Retail Village will be comprised of a full-service grocery, restaurants, and retail shops providing services to the Oak Knoll Community and surrounding neighborhoods. At the heart of the Retail Village is an intimately scaled pedestrian plaza featuring a landscape of mature oaks. The plaza will provide expanded frontage for retail and restaurant facades, outdoor dining, and a place for neighbors to meet and socialize. Main Street, adjacent to the plaza, will be designed to allow the plaza to expand for events such as farmers' markets.

The RFQ, open to professional artists residing in the nine Bay Area counties, sought people who would create sculptural overhead elements, light environments, or designs incorporated into the plaza hardscape and landscape. Materials would have to be appropriate for a high-use environment, weather resistant, and low maintenance. Art value: \$188,000; art budget: \$170,000.

Johanna Poethig of Oakland, Brian Goggin of San Francisco, and a team of Sheila Gihidini of San Francisco and Laurie Polster of Oakland were selected to create proposals for the Plaza.

Oak Knoll Retail Plaza Panel:

Art Clark—Architect, community representative, Eastmont Hills

Sam McGeehan—principal architect for Lowney Architects

David Duskin—sculptor, public art artist, graduate instructor at the Academy of Art, San Francisco

Chris Hall—principal architect for Hart Howerton

David Soyka—Oak Knoll Venture Acquisitions/Suncal

Philip Dow—public art consultant, sculptor, community representative, Oak Knoll

Johanna Poethig was awarded the Retail Village Plaza commission. Johanna is known for her monumentally scaled murals and architecturally integrated public art, socially engaged collaborations, multimedia installations, and performance. She is currently lead artist for a 1.5 million-dollar project to create public art for 34 AC Transit bus stations along a 9-mile transit corridor from downtown Oakland to San Leandro. Other projects include the Bernal Library in San Francisco, a historic building in downtown Chicago, and San Francisco's Juvenile Justice Center. She received her MFA at Mills College and is a professor of painting and public art at California State University, Monterey Bay.

Johanna's contract was signed in December 2017 and activated in April 2018. Lowney Architects, which is responsible for the commercial design, anticipates that Johanna's services will be needed early this summer. The final design should be ready for Oak Knoll Venture Acquisitions approval in the fall of 2019. Installation date is yet to be determined.



▲ **ENTRANCE FACADE: Signature Installation of glass pixel mosaic**

INTRODUCTION - Pictorial rendering of the natural and mathematical beauty of plants emerging from California landscape. Oak tree leaves, succulents, flowers composed with phyllotaxis spiral patterns. Fabricated out of sparkling glass pixels to resonate with computer modeling systems that generate visualizations and models of plant development.

▼ Sunflower phyllotaxis pattern etched on glass.



Poethig, Retail Village Plaza, proposed glass mosaic

Site 4: Oak Knoll Public Amenities

Throughout the Oak Knoll Community there will be opportunities for the placement of bicycle racks and benches. Bicycle racks will be required by the City of Oakland to be placed in the Village Retail Center and at the Community Center to encourage bicycle transportation. Benches may be located at common areas such as adjacent to the Creekside Parkway multi-use path, in the Creekside Village pocket park, or at the Retail Center.

The RFQ, open to professional artists residing in Oakland, sought people who would create six unique benches and six unique bicycle racks. The project would require materials that are permanent, durable, weather resistant, and low maintenance. Art value: \$68,000; art budget: \$60,000.

Mark Bulwinkle, David Marcoullier, and Sean Orlando were selected to create proposals for the public amenities.

Oak Knoll Public Amenities Selection Panel:

Pamela Baker—community representative, Eastmont Hills

Diane Zuliani—fine art curator, art faculty member at Chabot College

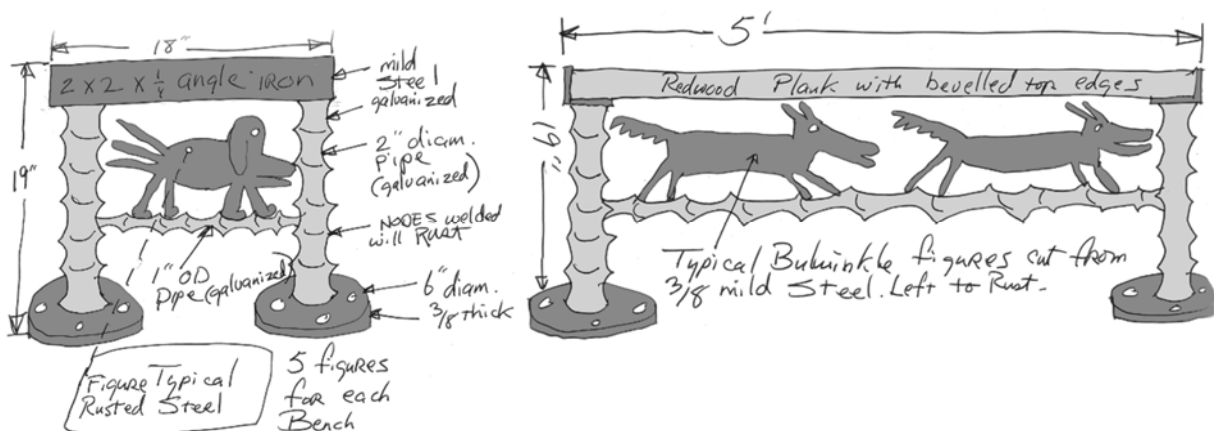
Chris Hall—principal architect for Hart Howerton

David Soyka—Oak Knoll Venture Acquisitions/Suncal

Philip Dow—public art consultant, community representative, Oak Knoll

Mark Bulwinkle was awarded the commission. After getting an MFA from the San Francisco Art Institute in 1973 and working locally as a ceramist, Mark attended John O'Connell Technical School, becoming an industrial welder—a move he deems central to his education as a craftsman and artist. While working as a union boilermaker, he still found time to create the “Thrillah on Manilla,” enveloping his small Oakland bungalow with thousands of rusted steel figures. Through the '80s he exhibited nationwide in numerous galleries (among them the John Berggruen Gallery) and currently takes on private commissions, including 28 sculptures at the East Bay Plaza in Oakland/Emeryville and a gateway at the Lou Harrison estate in Joshua Tree.

Mark's contract was signed in July 2017 and activated in March of 2018. He will be working with PGA Landscape Architects to place benches at a variety of locations throughout the site. They will be providing design guidelines so the benches meet standard dimensions. Mark will also be working with Lowney Architects and Architectural Dimensions on bicycle rack locations to help satisfy the City of Oakland Bicycle ordinance. Final designs, as well as site drawings, will not be completed until later this year. Installation date is yet to be determined.



Bulwinkle, steel bamboo park benches.

Site 5: Oak Knoll Vehicle Bridge

A 120-foot-long corten steel, gusset-truss vehicle and pedestrian bridge, anchored by 30-foot-long stone-clad abutments, will span the Rifle Range Creek. The bridge serves as the primary access to a majority of the Oak Knoll Community housing. It will be viewed by pedestrians hiking a 10-foot-wide trail along the Creekside Parkway, motorists entering the residential neighborhoods, and residents and visitors walking across the bridge, as well as visitors to an adjacent community center.

The RFQ, open to professional artists residing in the nine Bay Area counties, sought people who would create permanent art integrated into the bridge design in areas such as pedestrian railing, structural components, and stone abutments. Materials would have to be appropriate for a high-use environment, weather resistant, and low maintenance. Art value: \$167,000; art budget: \$150,000.

Bruce Tomb of San Francisco, Ben Trautman of Oakland, and Gordon Heather of Napa were selected to make proposals for the bridge.

Rifle Range Creek Bridge Selection Panel:

Jeannette Yusko—community representative, Sequoyah

David Duskin—sculptor, public art artist, graduate instructor at the Academy of Art, San Francisco

Chris Hall—principal architect for Hart Howerton

David Soyka—Oak Knoll Venture Acquisitions/Suncal

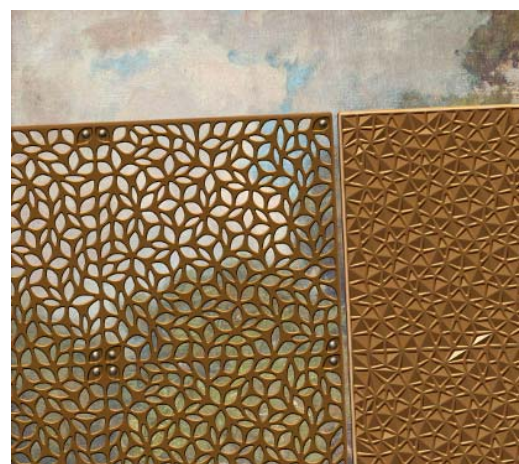
Philip Dow—public art consultant, sculptor, community representative, Oak Knoll

Bruce Tomb was awarded the commission. Bruce established the interdisciplinary practice, BRUCE TOMB, <http://www.bruceomb.com>, in 1998. He has taught at UC Berkeley, Cal Poly, San Luis Obispo, and is a senior adjunct professor at California College of Arts in San Francisco/Oakland, teaching Architectural Design and Sculpture Studios since 1989. Through both commissioned and experimental projects, he has investigated dynamic relationships between people, sites, buildings, technology, and our environment. Recent endeavors include the *(de)Appropriation Parklet*, a memorial to free speech, supported by the San Francisco Arts Commission through an Individual Artist Commissions grant, and a collaboration with Chip Lord and Curtis Schreier on the *Ant Farm Media Van v.08 [Time Capsule]* and the *Time Capsule Triptych*, both the subject of the new book, *The Present Is the Form of All Life*.

Bruce's contract was signed in July 2017 and activated in March 2018. However, because completing the bridge engineering was a priority, Tomb provided design input in 2017. Engineering required for his design is now embedded into the construction documents. Refinement of his design will be ready for submittal to Oak Knoll Venture Acquisitions by November of 2018 and, once it's approved, the City of Oakland Public Art Checklist can be prepared for staff review. Installation is anticipated for late 2020.



Tomb, Rifle Range Creek Bridge, section of proposed rail



Detail



Vehicle Bridge and Rifle Range Creek in relation to conceptual development plan.



Vehicle Bridge and Rifle Range Creek in relation to existing conditions.