

Oakland, CA

Urban Forest

Council District Summary:

Supplemental Materials

2021



Table of Contents

Introduction and Guide	1
Tree Canopy and Land Cover	3
Historic Change.....	6
Zoning.....	7
CalEnviroScreen 3.0.....	10
CalEnviroScreen Indicators.....	28
CDC 500 Cities.....	29
Redlining	32
Public versus Private	39
Distribution of Community Urban Forest Assets	39
Population Characteristics	40
References.....	54

Maps

Map 1: Land Cover by Council District.....	4
Map 2: Oakland Zoning.....	8
Map 3: CalEnviroScreen Scores by Census Tract.....	26
Map 4: Historic redlining grades within Oakland’s current boundaries.....	36

Figures

Figure 1: Oakland Land Cover Summary.....	3
Figure 2: Prevalence of Poor Mental Health by Canopy Cove	31
Figure 3: Commercial Redlining and Canopy Cover by Census Tracts.....	35
Figure 4: Grade A Redlining and Canopy Cover by Census Tracts.....	38
Figure 5: Grade B Redlining and Canopy Cover by Census Tracts	38
Figure 6: Grade C Redlining and Canopy Cover by Census Tracts.....	38
Figure 7: Grade D Redlining and Canopy Cover by Census Tracts.....	39
Figure 8: White and Canopy Cover by Census Tracts.....	46
Figure 9: Black or African American and Canopy Cover by Census Tracts.....	46
Figure 10: Native Hawaiian or Other Pacific Islander and Canopy Cover by Census Tracts.....	46
Figure 11: Other Race and Canopy Cover by Census Tracts.....	47
Figure 12: Two or more Races and Canopy Cover by Census Tracts	47
Figure 13: Ownership and Canopy Cover by Census Tracts	50
Figure 14: Rentership and Canopy Cover by Census Tracts	50
Figure 15: Vacant Properties and Canopy Cover by Census Tracts	50

Tables

Table 1: Land Cover by Council District.....	3
Table 2: Historic Change by Council District.....	6
Table 3: Existing and Potential Canopy Cover by Zoning Designation	7
Table 4: Distribution of Zoning by Council District.....	7
Table 5: Land Cover in Residential Zoning by Council District	7
Table 6: CalEnviroScreen Cumulative Score and Canopy Cover by Census Tract	10
Table 7: CalEnviroScreen Environmental Indicators and Canopy Cover by Census Tracts	14
Table 8: CalEnviroScreen Population Indicators and Canopy Cover by Census Tract.....	20
Table 9: CDC 500 Cities and Canopy Cover by Census Tracts	29
Table 10: Redlining by Census Tracts.....	32
Table 11: Private and Public Property by Council District.....	39
Table 12: Population Characteristics and Urban Forest Assets by Council District.....	39
Table 13: Race by Census Tracts.....	40
Table 14: Homeownership by Census Tracts.....	47
Table 15: Educational Attainment by Census Tracts.....	51

Introduction and Guide

The following data tables, figures, and maps have been provided to support the finding reported in the *Urban Forest Council District Summary* (2021). Additionally, a detailed methodology has been included to assist readers in understanding the analysis.

Methodology

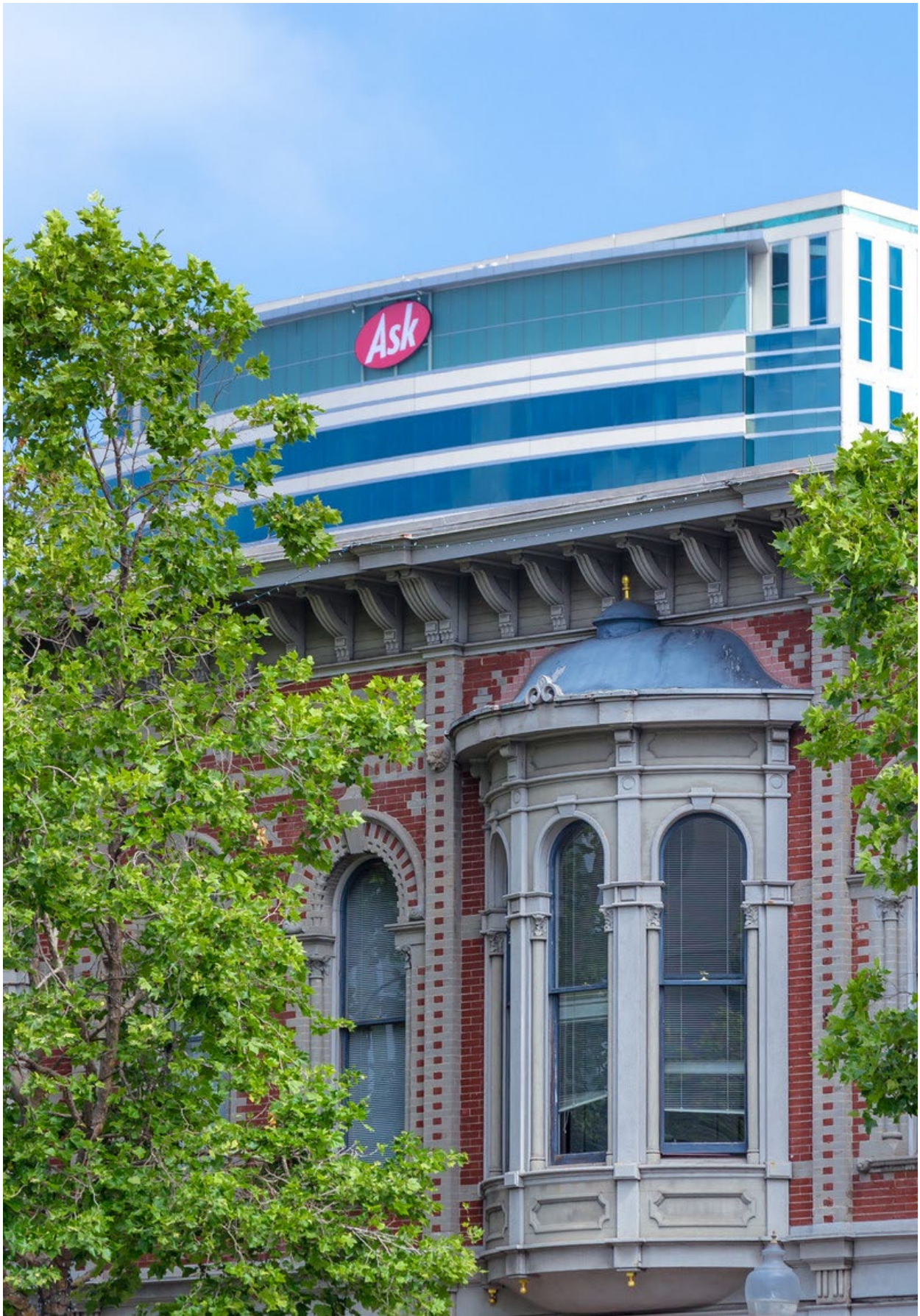
Davey Resource Group, Inc. utilized an object-based image analysis (OBIA) semi-automated feature extraction method to process and analyze current high-resolution color infrared (CIR) aerial imagery and remotely-sensed data to identify tree canopy cover and land cover classifications.¹ This data combined with socioeconomic data from the U.S. Census, CalEnviroScreen 3.0, CDC 500 Cities, and historic redlining data was used to draw comparisons with tree canopy cover.

Within Oakland there are 380 census tracts (a geographic region defined for the purpose of taking a census, generally encompass a population between 2,500 and 8,000 people). Socioeconomic data for each census tract was compared with canopy cover using a scatterplot. For each scatterplot, a trend line was added with the corresponding R-squared value. These R-squared values can be interpreted as the proportion of the variance in y attributable to the variance in x. In other words, the R-squared value measures the “goodness of fit” or how much of the data can be explained by the trend line. For example, if a trend line is aligned exactly with the plotted values for x and y, the R-squared value would be 1, or 100% of the data can be explained by the trend line. This analysis only evaluated the models using R-squared. While R-squared values are handy and intuitive for estimating the strength of relationships between variables, further analysis would be required to formally test these relationships and determine statistical significance.

Social science experiments deal with humans, and humans are difficult to predict, so it is not uncommon to see studies in this field that consider an R-squared of .15 acceptable. In applied sciences, where variables are predictable, generally an R-squared of .3 is considered acceptable, although many studies use a higher threshold. For the purposes of this analysis, because humans are a variable, an R-squared value of .15 was used as the minimum threshold.

Many comparisons revealed R-squared values that exceeded the minimum thresholds. Yet, only a few variables were selected for greater discussion, as this study primarily focused on exploring inequities in canopy cover that could potentially be addressed through urban forestry management. For example, while census tracts with high rentership tended to have lower canopy cover and vice versa, areas with high ownership tended to have higher canopy cover, these variables and others were not discussed because these inequities likely cannot be resolved through changes in urban forestry practices and canopy expansion alone. However, the data for several of these other comparisons have been included in these supplemental materials for further exploration.

¹ For a complete methodology for the extraction and accuracy assessment of land cover data see the *Oakland, CA Tree Canopy & Land Cover Assessment* (2020).



Tree Canopy and Land Cover

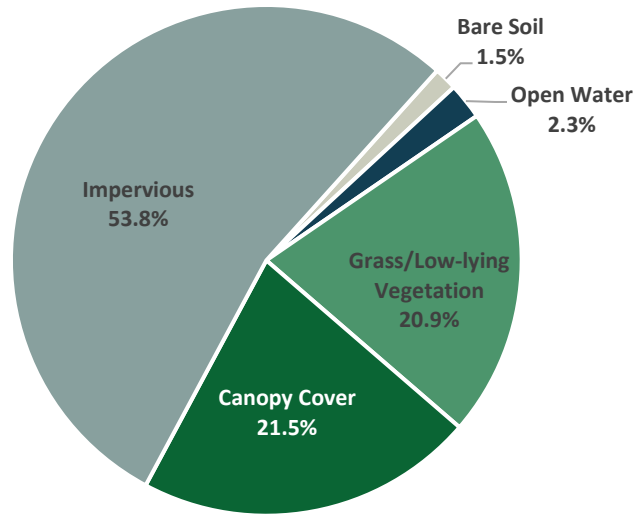
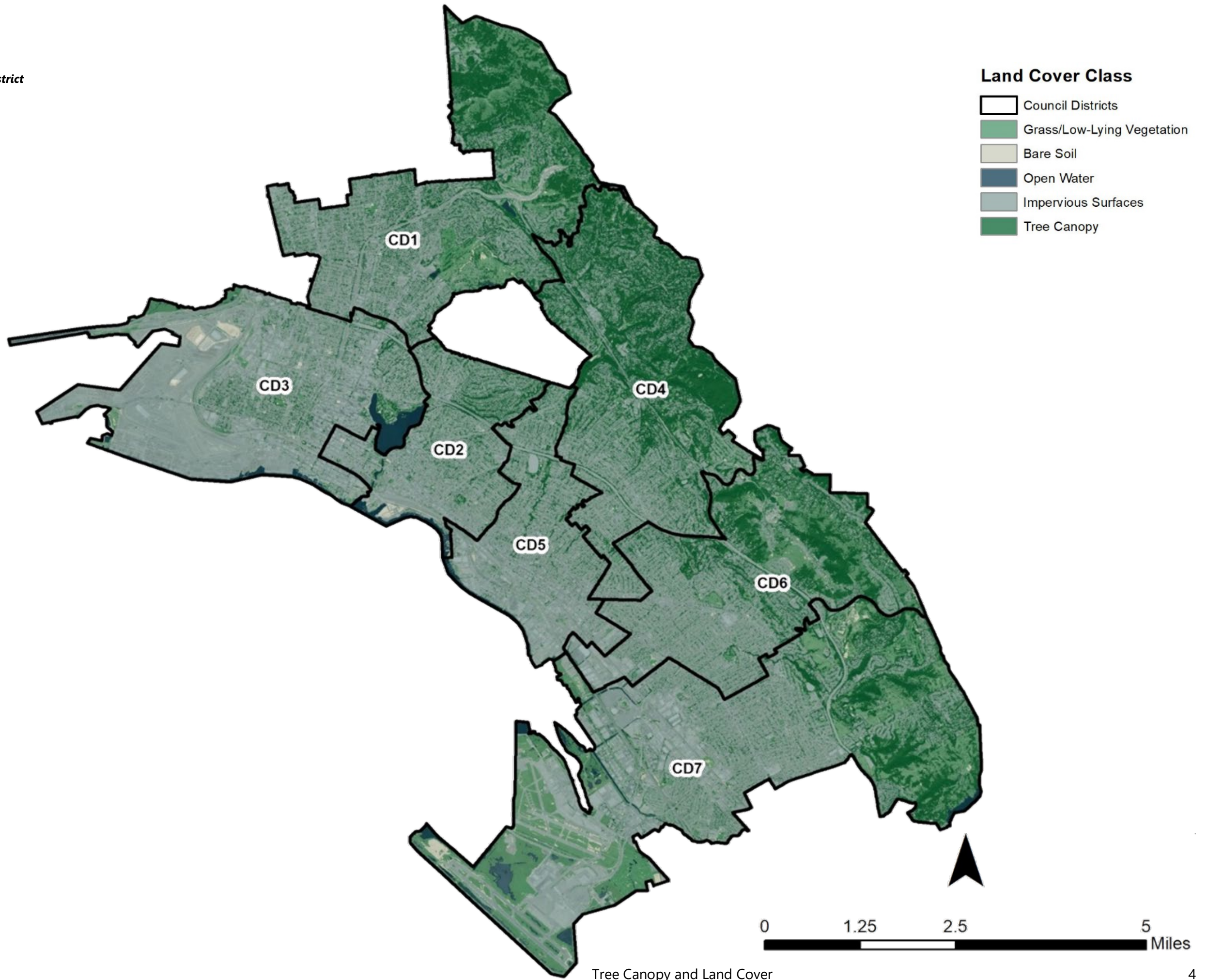


Figure 1: Oakland Land Cover Summary

Table 1: Land Cover by Council District

	Overall Oakland	Council District 1	Council District 2	Council District 3	Council District 4	Council District 5	Council District 6	Council District 7
Total Acres	36,367.13	5,619.65	9,708.04	4,929.88	5,503.81	2,504.86	2,650.88	5,450.00
Canopy Acres	7,817.62	1,745.16	1,484.76	1,382.92	288.80	327.11	238.70	2,350.18
Canopy Cover %	21.50	31.05	13.06	5.25	43.12	9.00	28.05	15.29
Impervious Acres	19,576.33	2,374.96	4,661.88	2,326.18	4,329.87	1,735.21	2,060.97	2,087.26
Impervious %	53.83	42.26	69.27	78.67	38.30	77.75	47.19	48.02
Grass/Low-lying Vegetation Acres	7,606.55	1,421.98	2,994.14	1,169.74	424.40	319.03	292.29	984.99
Grass/Low-lying Vegetation %	20.92	25.30	12.74	7.71	18.07	11.03	23.73	30.84
Bare Soil Acres	533.40	59.58	222.40	47.17	133.85	35.94	7.94	26.51
Bare Soil %	1.47	1.06	2.29	0.96	2.43	1.43	0.30	0.49
Open Water Acres	833.22	17.97	344.86	3.87	326.89	87.57	50.98	1.07
Open Water %	2.29	0.32	3.50	5.94	0.02	1.92	0.08	3.55

Map 1: Land Cover by Council District



Historic Change

Table 2: Historic Change by Council District

	Overall Oakland	Council District 1	Council District 2	Council District 3	Council District 4	Council District 5	Council District 6	Council District 7
Total Acres	36,367.13	5,619.65	2,504.86	5,503.81	5,450.00	2,650.88	4,929.88	9,708.04
Acres Canopy Cover 2020	7,819.62	1,745.16	327.11	288.80	2,350.18	238.70	1,382.92	1,484.76
% Canopy Cover 2020	21.50	31.05	13.06	5.25	43.12	9.00	28.05	15.29
Acres Impervious Surface 2020	19,576.33	2,374.96	1,735.21	4,329.87	2,087.26	2,060.97	2,326.18	4,661.88
% Impervious Surface 2020	53.83	42.26	69.27	78.67	38.30	77.75	47.19	48.02
Acres Canopy Cover 2014	8,094.18	1,704.44	398.24	300.28	2,468.38	295.53	1,396.99	1,530.32
% Canopy Cover 2014	22.26	30.33	15.90	5.46	45.29	11.15	28.34	15.76
Acres Impervious Surface 2014	18,280.24	2,144.52	1,614.38	4,115.96	1,828.55	1,822.05	2,197.83	4,556.94
% Impervious Surface 2014	50.27	38.16	64.45	74.78	33.55	68.73	44.58	46.94
% Change in Canopy Cover 2014-2020	-3.39	2.39	-17.86	-3.83	-4.79	-19.23	-1.01	-2.98
% Change in Impervious Surface 2014-2020	7.09	10.75	7.48	5.20	14.15	13.11	5.84	2.30

Zoning

Table 3: Existing and Potential Canopy Cover by Zoning Designation

Zone	Zone Acres	Canopy Ares	Canopy Cover %	Preferred Plantable Acres	Potential Canopy Cover %
Residential	21,440.31	5,781.26	26.96	4,600.63	48.42
Industrial	6,589.46	55.20	0.84	1,587.22	24.92
Open Space	3,976.84	1,751.18	44.03	1,543.61	82.85
Commercial	1,921.35	117.38	6.11	134.75	13.12
Coliseum Area District	743.30	33.40	4.49	102.95	18.34
Special and Combining	557.67	24.43	4.38	107.71	23.70
Central Estuary District	440.37	10.02	2.28	20.10	6.84
Business District	408.35	23.66	5.79	19.50	10.57
Lake Merritt District	251.70	14.60	5.80	14.00	11.36

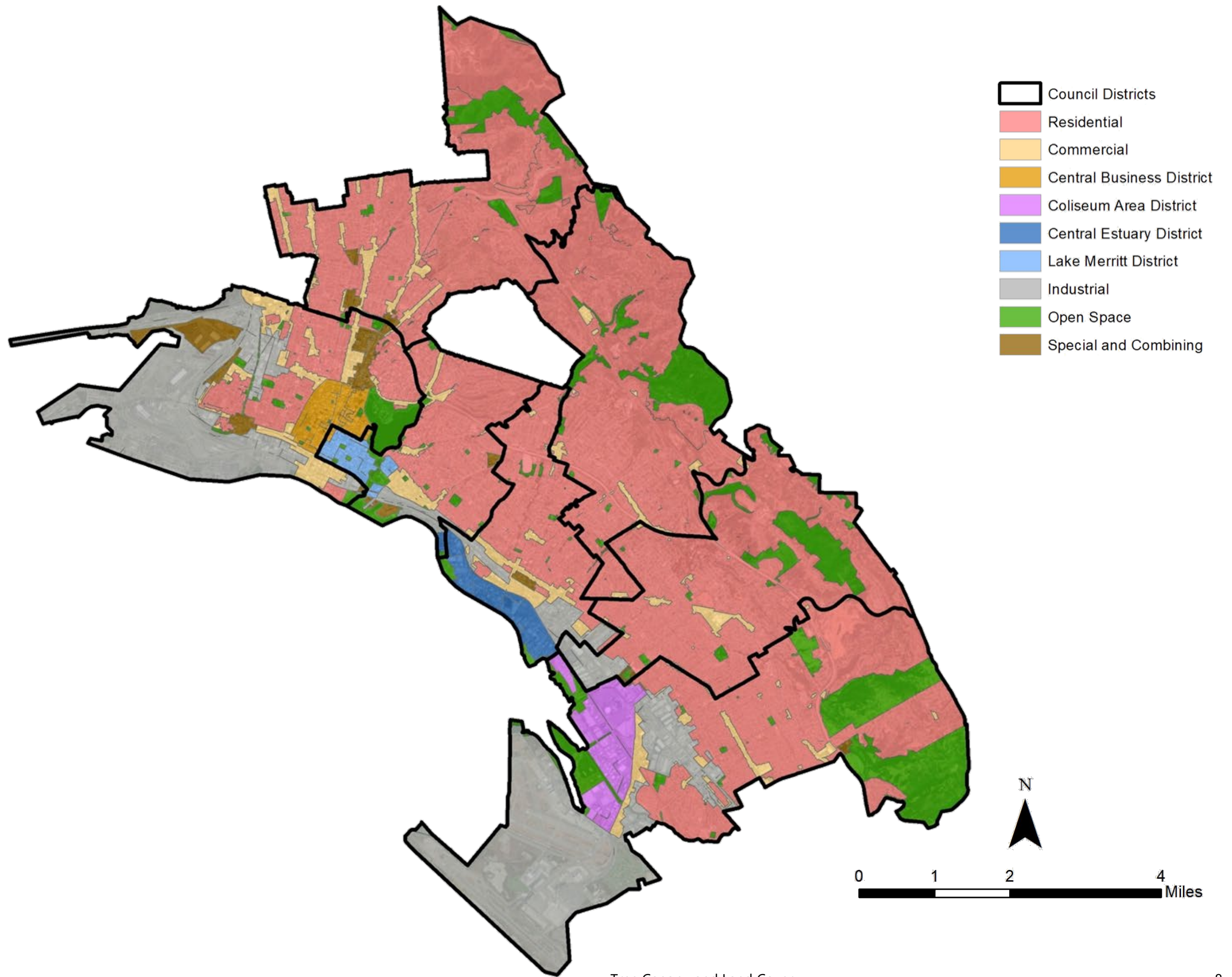
Table 4: Distribution of Zoning by Council District

	Overall Oakland	Council District 1	Council District 2	Council District 3	Council District 4	Council District 5	Council District 6	Council District 7
Residential	21,440.31	4,731.17	1,654.94	1,169.03	4,635.47	1,550.01	4,000.16	3,699.54
Industrial	6,589.46	0.00	141.73	2,641.69	0.00	306.27	217.30	3,282.48
Open Space	3,976.84	468.89	190.85	329.75	683.18	82.38	563.07	1,658.72
Commercial	1,921.35	344.04	191.99	548.46	130.60	268.50	130.61	307.14
Coliseum Area District	743.30	0.00	0.00	0.00	0.00	0.00	3.85	739.45
Special and Combining	571.86	61.07	48.15	407.66	0.00	23.03	14.20	17.76
Central Estuary District	440.37	0.00	20.89	0.00	0.00	419.20	0.29	0.00
Central Business District	408.35	0.00	18.26	390.09	0.00	0.00	0.00	0.00
Lake Merritt District	251.70	0.00	237.31	14.39	0.00	0.00	0.00	0.00

Table 5: Land Cover in Residential Zoning by Council District

	Overall Oakland	Council District 1	Council District 2	Council District 3	Council District 4	Council District 5	Council District 6	Council District 7
Total Residential Acres	21,441.89	4,731.68	1,654.97	1,169.01	4,635.78	1,550.01	4,000.51	3,699.93
Residential Canopy Acres	5,781.00	1,487.58	278.37	153.42	1,805.77	194.77	1,052.19	808.90
Canopy Cover %	26.96	31.44	16.82	13.12	38.95	12.57	26.30	21.86
Residential Impervious Acres	11,041.64	2,001.42	1,119.18	868.70	1,949.15	1,133.73	1,968.77	2,000.68
Impervious %	51.50	42.30	67.63	74.31	42.05	73.14	49.21	54.07

Map 4: Oakland Zoning



CalEnviroScreen 3.0

Table 6: CalEnviroScreen Cumulative Score and Canopy Cover by Census Tract

Census Tracts	Canopy Cover %	Cumulative 3.0 Score	Cumulative 3.0 Percentile	Cumulative Score Range
G0600010400100	51.09	4	2.00	1-5% (lowest scores)
G0600010400200	28.31	2	0.00	1-5% (lowest scores)
G0600010400300	17.70	12	18.00	15-20%
G0600010400400	26.53	11	15.00	15-20%
G0600010400500	13.55	19	35.00	30-35%
G0600010400600	15.36	18	34.00	30-35%
G0600010400700	10.89	36	70.00	65-70%
G0600010400800	9.64	34	67.00	65-70%
G0600010400900	14.13	34	67.00	65-70%
G0600010401000	10.10	42	79.00	75-80%
G0600010401100	12.17	30	59.00	55-60%
G0600010401200	16.10	18	33.00	30-35%
G0600010401300	8.07	37	71.00	70-75%
G0600010401400	6.47	47	85.00	85-90%
G0600010401500	6.74	45	82.00	80-85%
G0600010401600	4.19	41	78.00	75-80%
G0600010401700	1.61	46	85.00	80-85%
G0600010401800	15.12	48	86.00	85-90%
G0600010402200	8.86	49	88.00	85-90%
G0600010402400	12.33	43	80.00	75-80%
G0600010402500	12.21	44	82.00	80-85%
G0600010402600	14.26	35	68.00	65-70%
G0600010402700	10.07	40	76.00	75-80%
G0600010402800	4.34	38	73.00	70-75%
G0600010402900	4.25	27	53.00	50-55%
G0600010403000	3.95	47	85.00	80-85%
G0600010403100	6.13	34	67.00	65-70%
G0600010403300	6.73	44	82.00	80-85%
G0600010403400	9.95	30	59.00	55-60%
G0600010403501	16.07	25	50.00	45-50%
G0600010403502	18.32	16	27.00	25-30%
G0600010403600	16.67	19	36.00	35-40%
G0600010403701	14.62	9	11.00	10-15%
G0600010403702	14.18	13	19.00	15-20%
G0600010403800	13.83	12	17.00	15-20%
G0600010403900	19.88	17	31.00	30-35%
G0600010404000	17.99	8	8.00	5-10%
G0600010404101	14.55	8	9.00	5-10%

Census Tracts	Canopy Cover %	Cumulative 3.0 Score	Cumulative 3.0 Percentile	Cumulative Score Range
G0600010404102	20.20	12	17.00	15-20%
G0600010404200	25.24	6	4.00	1-5% (lowest scores)
G0600010404300	28.77	5	3.00	1-5% (lowest scores)
G0600010404400	47.42	6	4.00	1-5% (lowest scores)
G0600010404501	44.32	4	2.00	1-5% (lowest scores)
G0600010404502	52.39	4	2.00	1-5% (lowest scores)
G0600010404600	68.39	2	0.00	1-5% (lowest scores)
G0600010404700	49.02	8	9.00	5-10%
G0600010404800	30.11	17	31.00	30-35%
G0600010404900	20.50	18	32.00	30-35%
G0600010405000	29.13	10	12.00	10-15%
G0600010405100	31.20	6	5.00	5-10%
G0600010405200	14.03	22	43.00	40-45%
G0600010405301	10.02	24	47.00	45-50%
G0600010405302	6.99	33	66.00	65-70%
G0600010405401	8.24	40	76.00	75-80%
G0600010405402	6.86	30	60.00	55-60%
G0600010405500	12.03	27	55.00	50-55%
G0600010405600	14.37	25	51.00	50-55%
G0600010405700	11.41	30	60.00	60-65%
G0600010405800	11.48	24	48.00	45-50%
G0600010405901	6.22	35	68.00	65-70%
G0600010405902	9.47	34	67.00	65-70%
G0600010406000	3.44	50	89.00	85-90%
G0600010406100	3.31	47	86.00	85-90%
G0600010406201	6.44	40	75.00	75-80%
G0600010406202	10.16	37	71.00	70-75%
G0600010406300	13.39	28	55.00	50-55%
G0600010406400	20.26	30	60.00	55-60%
G0600010406500	13.11	35	68.00	65-70%
G0600010406601	12.80	26	52.00	50-55%
G0600010406602	12.36	25	49.00	45-50%
G0600010406700	30.13	15	26.00	25-30%
G0600010406800	23.67	13	20.00	15-20%
G0600010406900	22.19	16	28.00	25-30%
G0600010407000	10.13	27	54.00	50-55%
G0600010407101	11.76	27	54.00	50-55%
G0600010407102	10.71	33	65.00	60-65%
G0600010407200	7.11	42	78.00	75-80%
G0600010407300	1.25	53	91.00	90-95%
G0600010407400	5.09	41	77.00	75-80%

Census Tracts	Canopy Cover %	Cumulative 3.0 Score	Cumulative 3.0 Percentile	Cumulative Score Range
G0600010407500	6.51	38	73.00	70-75%
G0600010407600	12.86	30	60.00	60-65%
G0600010407700	11.03	13	20.00	20-25%
G0600010407800	35.46	15	26.00	25-30%
G0600010407900	28.95	13	20.00	15-20%
G0600010408000	39.30	6	5.00	1-5% (lowest scores)
G0600010408100	43.87	12	18.00	15-20%
G0600010408200	23.93	16	29.00	25-30%
G0600010408300	25.19	25	49.00	45-50%
G0600010408400	8.99	21	41.00	40-45%
G0600010408500	9.24	26	52.00	50-55%
G0600010408600	6.92	27	54.00	50-55%
G0600010408700	7.63	31	61.00	60-65%
G0600010408800	5.36	60	96.00	95-100% (highest scores)
G0600010408900	5.37	48	87.00	85-90%
G0600010409000	1.91	62	97.00	95-100% (highest scores)
G0600010409100	6.63	60	96.00	95-100% (highest scores)
G0600010409200	11.25	55	93.00	90-95%
G0600010409300	6.27	45	83.00	80-85%
G0600010409400	4.87	49	88.00	85-90%
G0600010409500	5.31	51	90.00	90-95%
G0600010409600	8.88	32	64.00	60-65%
G0600010409700	11.64	21	40.00	40-45%
G0600010409800	27.35	27	55.00	50-55%
G0600010409900	37.38	24	48.00	45-50%
G0600010410000	42.92	23	46.00	45-50%
G0600010410100	12.51	33	66.00	65-70%
G0600010410200	8.40	27	53.00	50-55%
G0600010410300	8.05	29	58.00	55-60%
G0600010410400	7.45	26	52.00	50-55%
G0600010410500	9.85	44	81.00	80-85%
G0600010421600	80.00	2	0.00	1-5% (lowest scores)
G0600010422000	0.00	40	76.00	75-80%
G0600010422600	66.20			
G0600010422700	44.44	14	22.00	20-25%
G0600010423700	31.82	10	13.00	10-15%
G0600010423800	43.88	4	2.00	1-5% (lowest scores)
G0600010423901	18.97	14	23.00	20-25%
G0600010423902	42.92	14	22.00	20-25%
G0600010424001	17.02	20	38.00	35-40%
G0600010424002	3.21	31	61.00	60-65%

Census Tracts	Canopy Cover %	Cumulative 3.0 Score	Cumulative 3.0 Percentile	Cumulative Score Range
G0600010425103	1.04	25	51.00	50-55%
G0600010425104	11.73	41	77.00	75-80%
G0600010426100	17.28	3	1.00	1-5% (lowest scores)
G0600010426200	28.75	6	4.00	1-5% (lowest scores)
G0600010428301	3.39	10	13.00	10-15%
G0600010430102	52.16	4	2.00	1-5% (lowest scores)
G0600010430400	37.21	7	7.00	5-10%
G0600010432100	7.49	18	32.00	30-35%
G0600010432200	5.05	21	41.00	40-45%
G0600010432300	10.07	32	62.00	60-65%
G0600010432400	0.33	45	84.00	80-85%
G0600010432502	79.41	32	63.00	60-65%
G0600010432700	0.00	23	46.00	45-50%
G0600010432800	94.15	17	30.00	30-35%
G0600010981900	0.36			
G0600010982000	1.08			
G0600010983200	6.21			
G0600130352202	53.36	3	1.00	1-5% (lowest scores)
G0600130353001	49.13	3	1.00	1-5% (lowest scores)
G0600130354001	47.37	12	10-15%	0.03

Table 7: CalEnviroScreen Environmental Indicators and Canopy Cover by Census Tracts

Census Tracts	Canopy Cover %	CalEnviroScreen Environmental Indicators													
		Ozone Score	PM2.5 Score	Diesel PM Score	Drinking Water Score	Pesticides Score	Toxic Release Score	Traffic Score	Cleanup Sites Score	Groundwater Threats Score	Hazard Waste Score	Imp Water Score	Solid Waste Score	Pollution Burden	Pollution Burden Score
G0600010400100	51.09	0.03	8.70	27.44	70.60	0.00	485.31	929.74	4.50	4.05	6.00	2.00	1.00	37.94	4.67
G0600010400200	28.31	0.03	8.70	42.19	70.60	0.00	442.47	1,392.34	0.00	20.55	0.00	0.00	0.00	30.17	3.72
G0600010400300	17.70	0.03	8.70	42.19	70.60	0.00	426.13	1,207.30	0.90	35.25	0.00	0.00	0.00	31.38	3.87
G0600010400400	26.53	0.03	8.70	42.19	70.60	0.00	444.96	1,153.54	0.00	38.75	0.00	0.00	0.00	30.54	3.76
G0600010400500	13.55	0.03	8.70	42.19	70.60	0.00	448.93	668.28	3.50	21.60	0.00	0.00	0.00	29.47	3.63
G0600010400600	15.36	0.03	8.70	42.19	70.60	0.00	426.72	1,743.09	1.75	20.50	0.00	0.00	0.00	32.39	3.99
G0600010400700	10.89	0.03	8.70	42.08	70.60	0.00	428.21	646.61	10.05	41.55	0.48	10.00	0.00	42.81	5.27
G0600010400800	9.64	0.03	8.70	33.75	70.60	0.00	437.69	384.87	67.40	157.40	1.86	10.00	0.00	43.99	5.42
G0600010400900	14.13	0.03	8.70	34.28	70.60	0.00	410.92	378.29	39.15	97.90	2.50	10.00	0.20	44.18	5.44
G0600010401000	10.10	0.03	8.70	52.18	70.60	0.00	392.01	1,720.02	17.35	119.30	0.74	10.00	0.20	49.78	6.13
G0600010401100	12.17	0.03	8.70	50.62	70.60	0.00	394.91	1,537.35	7.40	93.30	0.01	0.00	0.00	36.24	4.46
G0600010401200	16.10	0.03	8.70	50.64	70.60	0.00	399.33	758.13	4.50	76.05	0.00	0.00	0.00	32.06	3.95
G0600010401300	8.07	0.03	8.70	54.34	70.60	0.00	362.48	1,341.83	30.70	180.35	0.15	11.00	0.00	47.38	5.84
G0600010401400	6.47	0.03	8.70	56.12	70.60	0.00	364.56	1,639.88	55.35	153.70	0.20	11.00	0.70	50.32	6.20
G0600010401500	6.74	0.03	8.70	76.11	70.60	0.00	362.54	916.65	85.45	136.75	0.74	10.00	5.50	53.32	6.57
G0600010401600	4.19	0.03	8.70	73.42	70.60	0.00	350.01	385.52	95.80	159.85	0.40	10.00	5.50	48.43	5.97
G0600010401700	1.61	0.03	8.70	75.69	70.60	0.00	342.76	2,080.53	323.75	335.35	5.08	10.00	14.70	58.23	7.17
G0600010401800	15.12	0.03	8.70	76.11	70.60	0.00	330.98	180.13	87.45	70.30	2.69	10.00	10.50	48.99	6.03
G0600010402200	8.86	0.03	8.70	76.11	70.60	0.00	325.56	769.38	174.30	137.25	2.88	10.00	11.75	54.20	6.68
G0600010402400	12.33	0.03	8.70	76.11	70.60	0.00	340.46	186.30	35.20	91.10	0.30	10.00	1.95	43.82	5.40
G0600010402500	12.21	0.03	8.70	76.11	70.60	0.00	330.70	531.54	56.80	106.90	0.38	10.00	0.50	45.72	5.63
G0600010402600	14.26	0.03	8.70	76.11	70.60	0.00	330.33	765.85	38.75	87.60	0.40	10.00	0.00	46.10	5.68
G0600010402700	10.07	0.03	8.70	68.36	70.60	0.00	341.04	609.13	22.40	113.00	0.40	11.00	0.50	46.11	5.68
G0600010402800	4.34	0.03	8.70	54.34	70.60	0.00	341.91	459.86	17.50	101.05	0.58	11.00	0.25	43.86	5.40
G0600010402900	4.25	0.03	8.70	54.34	70.60	0.00	342.88	294.20	13.15	63.10	0.56	11.00	0.50	42.34	5.21
G0600010403000	3.95	0.03	8.70	54.34	70.60	0.00	330.26	1,220.70	32.50	100.55	0.54	11.00	1.00	50.60	6.23
G0600010403100	6.13	0.03	8.70	65.29	70.60	0.00	330.49	1,052.40	33.95	93.00	0.53	11.00	0.25	48.65	5.99
G0600010403300	6.73	0.03	8.70	48.07	70.60	0.00	325.16	1,600.10	45.55	110.85	2.30	11.00	1.00	52.58	6.48
G0600010403400	9.95	0.03	8.70	54.34	70.60	0.00	341.87	430.14	13.75	114.40	0.85	11.00	1.00	45.05	5.55
G0600010403501	16.07	0.03	8.70	54.34	70.60	0.00	365.41	1,142.45	12.25	136.05	0.18	2.00	0.00	41.56	5.12
G0600010403502	18.32	0.03	8.70	54.34	70.60	0.00	363.22	2,935.47	3.50	63.75	0.08	2.00	0.00	39.43	4.86
G0600010403600	16.67	0.03	8.70	54.34	70.60	0.00	362.08	2,123.53	1.75	47.75	0.04	2.00	0.00	37.16	4.58
G0600010403701	14.62	0.03	8.70	54.34	70.60	0.00	357.03	537.97	3.50	62.50	0.15	2.00	0.00	35.01	4.31
G0600010403702	14.18	0.03	8.70	54.34	70.60	0.00	352.55	1,418.49	0.00	27.75	0.05	11.00	0.00	38.27	4.71
G0600010403800	13.83	0.03	8.70	54.34	70.60	0.00	373.16	945.68	0.00	20.00	0.00	2.00	0.00	30.52	3.76
G0600010403900	19.88	0.03	8.70	54.34	70.60	0.00	372.42	1,896.48	0.90	25.00	0.00	2.00	0.00	34.15	4.21
G0600010404000	17.99	0.03	8.70	54.34	70.60	0.00	384.87	1,104.41	4.50	47.25	0.00	0.00	0.00	33.39	4.11
G0600010404101	14.55	0.03	8.70	53.94	70.60	0.00	401.55	464.40	9.00	39.80	0.00	0.00	0.00	30.17	3.72
G0600010404102	20.20	0.03	8.70	54.34	70.60	0.00	391.20	421.88	9.00	40.75	0.00	0.00	0.00	29.80	3.67
G0600010404200	25.24	0.03	8.70	37.70	70.60	0.00	415.53	547.40	4.50	20.30	0.00	0.00	2.00	31.71	3.91
G0600010404300	28.77	0.03	8.70	40.35	70.60	0.00	433.37	1,089.96	0.00	11.00	0.00	0.00	0.00	27.86	3.43
G0600010404400	47.42	0.03	8.70	23.84	233.99	0.00	429.03	1,273.83	0.00	0.00	0.00	0.00	1.00	26.97	3.32
G0600010404501	44.32	0.03	8.70	22.17	70.60	0.00	395.62	723.50	0.00	0.00	0.00	1.00	0.60	22.33	2.75
G0600010404502	52.39	0.03	8.70	23.13	238.66	0.00	406.81	586.44	0.00	0.00	0.00	1.00	1.00	24.22	2.98
G0600010404600	68.39	0.03	8.70	18.99	236.66	0.00	386.56	423.60	0.00	2.00	0.00	1.00	1.00	22.21	2.74
G0600010404700	49.02	0.03	8.70	22.17	70.60	0.00	379.06	611.54	0.00	3.50	0.00	1.00	0.10	21.64	2.67
G0600010404800	30.11	0.03	8.70	22.17	70.60	0.00	367.39	394.52	0.00	15.00	0.10	1.00	0.00	24.77	3.05
G0600010404900	20.50	0.03	8.70	22.72	70.60	0.00	362.34	1,306.63	0.00	18.00	0.15	1.00	0.00	31.56	3.89
G0600010405000	29.13	0.03	8.70	33.96	70.60	0.00	364.83	1,329.47	0.00	15.50	0.06	3.00	0.00	33.19	4.09
G0600010405100	31.20	0.03	8.70	44.40	70.60	0.00	369.52	1,228.36	0.00	5.50	0.01	3.00	0.00	30.24	3.73

Census Tracts	Canopy Cover %	CalEnviroScreen Environmental Indicators													
		Ozone Score	PM2.5 Score	Diesel PM Score	Drinking Water Score	Pesticides Score	Toxic Release Score	Traffic Score	Cleanup Sites Score	Groundwater Threats Score	Hazard Waste Score	Imp Water Score	Solid Waste Score	Pollution Burden	Pollution Burden Score
G0600010405200	14.03	0.03	8.70	54.34	70.60	0.00	352.45	1,364.82	1.40	27.80	0.02	11.00	0.00	38.90	4.79
G0600010405301	10.02	0.03	8.70	54.34	70.60	0.00	339.69	404.09	2.45	28.30	0.22	11.00	0.00	36.92	4.55
G0600010405302	6.99	0.03	8.70	54.14	70.60	0.00	335.56	326.99	9.70	31.90	0.57	11.00	0.25	40.36	4.97
G0600010405401	8.24	0.03	8.70	49.33	70.60	0.00	334.97	295.33	11.40	25.30	0.55	15.00	0.00	39.70	4.89
G0600010405402	6.86	0.03	8.70	44.31	70.60	0.00	332.17	280.89	6.15	18.50	0.02	15.00	0.00	33.48	4.12
G0600010405500	12.03	0.03	8.70	52.05	70.60	0.00	341.31	264.60	1.40	16.35	0.02	15.00	0.00	31.47	3.88
G0600010405600	14.37	0.03	8.70	54.33	70.60	0.00	348.69	997.19	0.00	5.50	0.05	11.00	0.00	33.85	4.17
G0600010405700	11.41	0.03	8.70	40.53	70.60	0.00	347.02	1,284.52	0.00	9.50	0.12	11.00	0.00	37.04	4.56
G0600010405800	11.48	0.03	8.70	44.79	70.60	0.00	340.05	207.52	0.00	3.95	0.12	11.00	0.00	28.64	3.53
G0600010405901	6.22	0.03	8.70	44.27	70.60	0.00	330.57	235.29	4.15	25.95	0.14	15.00	0.00	35.55	4.38
G0600010405902	9.47	0.03	8.70	44.27	70.60	0.00	333.13	276.41	2.85	19.55	0.10	14.00	0.00	34.17	4.21
G0600010406000	3.44	0.03	8.70	44.58	70.60	0.00	324.06	1,732.58	67.00	144.80	3.15	17.00	0.45	52.30	6.44
G0600010406100	3.31	0.03	8.70	41.03	70.60	0.00	342.79	1,573.20	66.45	202.80	1.12	17.00	8.00	56.47	6.96
G0600010406201	6.44	0.03	8.70	43.22	70.60	0.00	330.71	236.09	8.60	29.30	0.18	11.00	0.00	36.86	4.54
G0600010406202	10.16	0.03	8.70	39.47	70.60	0.00	328.58	410.99	14.75	45.55	0.08	11.00	0.20	38.84	4.78
G0600010406300	13.39	0.03	8.70	38.78	70.60	0.00	338.07	468.88	1.00	6.80	0.04	11.00	0.00	30.69	3.78
G0600010406400	20.26	0.03	8.70	34.77	70.60	0.00	348.55	1,789.36	0.00	12.50	0.12	11.00	0.00	38.19	4.70
G0600010406500	13.11	0.03	8.70	38.37	70.60	0.00	342.12	598.83	2.45	18.00	0.02	11.00	0.20	35.09	4.32
G0600010406601	12.80	0.03	8.70	37.27	70.60	0.00	354.89	1,476.80	0.00	19.50	0.02	1.00	0.00	31.62	3.90
G0600010406602	12.36	0.03	8.70	32.00	70.60	0.00	356.25	1,762.85	0.00	16.50	0.10	1.00	0.00	33.27	4.10
G0600010406700	30.13	0.03	8.70	22.32	70.60	0.00	367.92	564.71	0.00	9.50	0.05	1.00	0.00	24.34	3.00
G0600010406800	23.67	0.03	8.70	29.93	70.60	0.00	363.79	548.79	0.00	5.00	0.00	0.00	0.00	22.11	2.72
G0600010406900	22.19	0.03	8.70	36.57	70.60	0.00	362.93	704.15	0.00	9.60	0.00	0.00	0.00	24.99	3.08
G0600010407000	10.13	0.03	8.70	38.37	70.60	0.00	352.53	1,393.73	0.00	27.30	0.00	1.00	0.00	31.09	3.83
G0600010407101	11.76	0.03	8.70	38.37	70.60	0.00	340.50	392.75	2.05	8.05	0.00	11.00	0.20	30.26	3.73
G0600010407102	10.71	0.03	8.70	38.37	70.60	0.00	345.97	441.53	6.80	14.20	0.00	11.00	1.75	35.42	4.36
G0600010407200	7.11	0.03	8.70	38.37	70.60	0.00	338.79	388.04	28.15	58.25	0.10	11.00	3.00	43.35	5.34
G0600010407300	1.25	0.03	8.70	38.35	70.60	0.00	364.46	1,406.60	79.45	183.05	0.86	16.00	30.50	56.83	7.00
G0600010407400	5.09	0.03	8.70	38.37	70.60	0.00	372.98	256.10	26.40	50.10	0.08	10.00	3.90	42.18	5.20
G0600010407500	6.51	0.03	8.70	38.37	70.60	0.00	361.93	208.82	11.25	25.00	0.08	10.00	0.80	36.58	4.51
G0600010407600	12.86	0.03	8.70	38.37	70.60	0.00	353.92	345.52	7.15	18.95	0.00	10.00	1.75	35.20	4.34
G0600010407700	11.03	0.03	8.70	38.37	70.60	0.00	358.56	325.10	0.00	4.30	0.00	0.00	0.00	20.33	2.50
G0600010407800	35.46	0.03	8.70	33.88	70.60	0.00	361.58	2,143.41	0.00	16.50	0.00	0.00	0.00	29.96	3.69
G0600010407900	28.95	0.03	8.70	33.45	70.60	0.00	364.20	1,650.74	0.00	18.30	0.00	0.00	0.00	29.57	3.64
G0600010408000	39.30	0.03	8.70	15.05	243.54	0.00	372.27	387.92	0.00	5.60	0.00	0.00	0.00	18.83	2.32
G0600010408100	43.87	0.03	8.70	17.64	325.32	0.03	373.92	783.57	5.50	9.00	0.05	0.00	0.00	30.76	3.79
G0600010408200	23.93	0.03	8.70	19.83	70.60	0.00	372.91	362.81	0.00	6.60	0.02	0.00	0.00	19.50	2.40
G0600010408300	25.19	0.03	8.70	19.11	70.60	0.00	381.77	2,584.77	2.90	5.90	0.10	0.00	0.00	30.44	3.75
G0600010408400	8.99	0.03	8.70	19.25	70.60	0.00	388.18	268.99	0.00	16.00	0.01	0.00	0.00	19.91	2.45
G0600010408500	9.24	0.03	8.70	27.64	70.60	0.00	396.93	399.03	2.25	15.10	0.05	0.00	0.00	26.02	3.21
G0600010408600	6.92	0.03	8.70	29.60	70.60	0.00	386.36	348.72	4.00	14.80	0.02	0.00	0.00	25.36	3.12
G0600010408700	7.63	0.03	8.70	37.96	70.60	0.00	373.50	267.33	8.20	17.80	0.06	0.00	0.50	29.52	3.64
G0600010408800	5.36	0.03	8.70	38.32	70.60	0.00	548.09	411.44	46.05	37.65	0.81	15.00	14.00	50.36	6.20
G0600010408900	5.37	0.03	8.70	38.05	70.60	0.00	796.60	469.47	37.00	31.30	2.08	1.00	7.00	45.36	5.59
G0600010409000	1.91	0.03	8.70	38.28	70.60	0.00	596.17	1,419.88	63.15	118.50	2.70	15.00	11.45	57.41	7.07
G0600010409100	6.63	0.03	8.70	37.55	70.60	0.00	611.93	2,145.76	45.70	25.10	0.34	11.00	6.00	54.14	6.67
G0600010409200	11.25	0.03	8.70	31.08	70.60	0.00	665.69	4,291.67	57.60	28.00	0.55	11.00	5.00	54.96	6.77
G0600010409300	6.27	0.03	8.70	29.22	70.60	0.00	493.23	329.65	54.80	60.75	0.65	2.00	7.50	43.96	5.41
G0600010409400	4.87	0.03	8.70	31.21	70.60	0.00	478.60	318.86	37.35	56.05	3.29	1.00	12.50	44.35	5.46

Census Tracts	Canopy Cover %	CalEnviroScreen Environmental Indicators													
		Ozone Score	PM2.5 Score	Diesel PM Score	Drinking Water Score	Pesticides Score	Toxic Release Score	Traffic Score	Cleanup Sites Score	Groundwater Threats Score	Hazard Waste Score	Imp Water Score	Solid Waste Score	Pollution Burden	Pollution Burden Score
G0600010409500	5.31	0.03	8.70	35.08	70.60	0.00	532.09	346.51	25.85	40.85	3.56	1.00	12.50	44.37	5.46
G0600010409600	8.88	0.03	8.70	29.22	70.60	0.00	417.82	348.57	3.20	15.30	0.05	0.00	0.50	27.61	3.40
G0600010409700	11.64	0.03	8.70	28.63	70.60	0.00	403.56	200.83	0.00	3.25	0.05	0.00	0.00	20.19	2.49
G0600010409800	27.35	0.03	8.70	25.07	70.60	0.00	390.22	2,232.32	4.25	0.00	0.52	0.00	0.00	32.51	4.00
G0600010409900	37.38	0.03	8.70	10.70	70.60	0.00	382.33	1,089.35	11.00	0.00	0.52	5.00	4.00	35.96	4.43
G0600010410000	42.92	0.03	8.70	15.55	70.60	0.00	391.08	1,576.47	0.00	17.50	0.50	7.00	4.00	39.97	4.92
G0600010410100	12.51	0.03	8.70	29.22	70.60	0.00	407.44	1,500.07	0.00	25.00	0.25	0.00	0.00	34.00	4.19
G0600010410200	8.40	0.03	8.70	29.22	70.60	0.00	414.59	242.09	0.00	28.50	0.06	0.00	0.00	24.59	3.03
G0600010410300	8.05	0.03	8.70	29.22	70.60	0.00	429.78	226.27	1.60	22.00	0.02	0.00	0.50	26.16	3.22
G0600010410400	7.45	0.03	8.70	29.22	70.60	0.00	442.92	212.59	0.00	42.05	0.15	0.00	0.00	26.80	3.30
G0600010410500	9.85	0.03	8.70	76.11	70.60	0.00	334.08	331.90	116.10	155.10	1.44	10.00	5.20	48.94	6.03
G0600010421600	80.00	0.03	8.70	13.01	70.60	0.00	547.83	84.78	6.20	3.30	6.05	2.00	0.00	26.07	3.21
G0600010422000	0.00	0.03	8.70	32.52	70.60	0.00	783.51	2,443.10	58.30	236.00	4.59	12.00	10.20	58.52	7.21
G0600010422600	66.20	0.03	8.70	13.68	70.60	0.00	520.20	413.04	13.50	24.45	6.53	1.00	0.00	32.61	4.02
G0600010422700	44.44	0.03	8.70	42.03	70.60	0.00	492.85	123.64	4.00	9.30	6.00	1.00	0.00	31.30	3.86
G0600010423700	31.82	0.03	8.70	42.19	70.60	0.00	477.43	592.50	0.70	9.50	1.50	1.00	0.00	32.58	4.01
G0600010423800	43.88	0.03	8.70	42.19	70.60	0.00	455.15	618.76	0.00	17.80	0.00	0.00	0.00	26.36	3.25
G0600010423901	18.97	0.03	8.70	42.19	70.60	0.00	470.03	650.98	7.00	16.60	0.00	0.00	0.00	30.03	3.70
G0600010423902	42.92	0.03	8.70	42.19	70.60	0.00	467.33	635.10	0.00	32.30	0.00	0.00	0.00	27.63	3.40
G0600010424001	17.02	0.03	8.70	41.02	70.60	0.00	464.67	539.73	11.30	7.25	0.00	10.00	0.00	33.81	4.16
G0600010424002	3.21	0.03	8.70	33.75	70.60	0.00	468.96	551.54	29.85	49.30	0.66	10.00	0.00	44.04	5.42
G0600010425103	1.04	0.03	8.70	33.75	70.60	0.00	422.79	494.11	128.95	269.95	4.52	10.00	0.90	47.04	5.79
G0600010425104	11.73	0.03	8.70	50.00	70.60	0.00	388.08	1,122.24	102.30	196.95	5.83	10.00	1.00	52.22	6.43
G0600010426100	17.28	0.03	8.70	31.25	70.60	0.00	389.48	273.38	0.00	10.00	0.00	1.00	2.00	25.45	3.13
G0600010426200	28.75	0.03	8.70	54.34	70.60	0.00	393.76	685.96	4.50	18.50	0.00	0.00	1.00	31.96	3.94
G0600010428301	3.39	0.03	8.70	16.68	70.60	0.00	371.20	301.30	0.25	27.80	0.25	14.00	10.00	36.67	4.52
G0600010430102	52.16	0.03	8.28	3.20	319.57	0.00	377.69	272.88	6.00	9.00	0.00	2.00	0.40	21.51	2.65
G0600010430400	37.21	0.03	8.70	28.52	70.60	0.00	375.00	146.60	0.00	1.50	0.00	7.00	0.00	22.31	2.75
G0600010432100	7.49	0.03	8.70	29.22	70.60	0.00	415.28	1,466.65	0.00	25.30	0.01	2.00	0.00	32.13	3.96
G0600010432200	5.05	0.03	8.70	29.22	70.60	0.00	453.63	311.70	3.60	37.25	0.05	2.00	0.00	29.76	3.67
G0600010432300	10.07	0.03	8.70	29.22	70.60	0.00	521.29	387.16	39.60	66.50	0.60	2.00	2.50	42.53	5.24
G0600010432400	0.33	0.03	8.70	18.37	70.60	0.00	1,090.18	2,087.33	40.30	87.65	1.53	11.00	35.50	55.34	6.82
G0600010432502	79.41	0.03	8.70	34.08	70.60	0.00	686.02	2,197.95	26.25	25.30	0.16	11.00	1.00	49.61	6.11
G0600010432700	0.00	0.03	8.70	30.67	70.60	0.00	420.00	1,838.97	2.50	13.25	0.00	2.00	0.00	33.05	4.07
G0600010432800	94.15	0.03	8.70	23.28	70.60	0.00	393.96	1,208.61	2.00	12.60	0.00	7.00	0.00	32.80	4.04
G0600010981900	0.36	0.03	8.70	76.11	70.60	0.00	306.44	906.35	49.25	45.50	0.30	10.00	0.50	47.62	5.87
G0600010982000	1.08	0.03	8.70	72.77	70.60	0.00	315.29	811.54	96.20	191.35	0.33	10.00	0.00	46.68	5.75
G0600010983200	6.21	0.03	8.70	57.30	70.60	0.00	320.99	1,537.88	68.65	140.30	0.34	11.00	0.25	49.86	6.14
G0600130352202	53.36	0.03	8.28	2.89	464.39	0.00	412.66	145.05	0.00	3.00	0.00	0.00	0.00	14.59	1.80
G0600130353001	49.13	0.03	8.28	13.17	248.88	0.00	455.50	1,625.02	1.00	0.00	0.00	0.00	2.00	26.51	3.27
G0600130354001	47.37	8.00	31.00	24.00	4.00	0.00	52.00	82.00	0.00	0.00	90.00	76.00	50.00	4.13	28.00

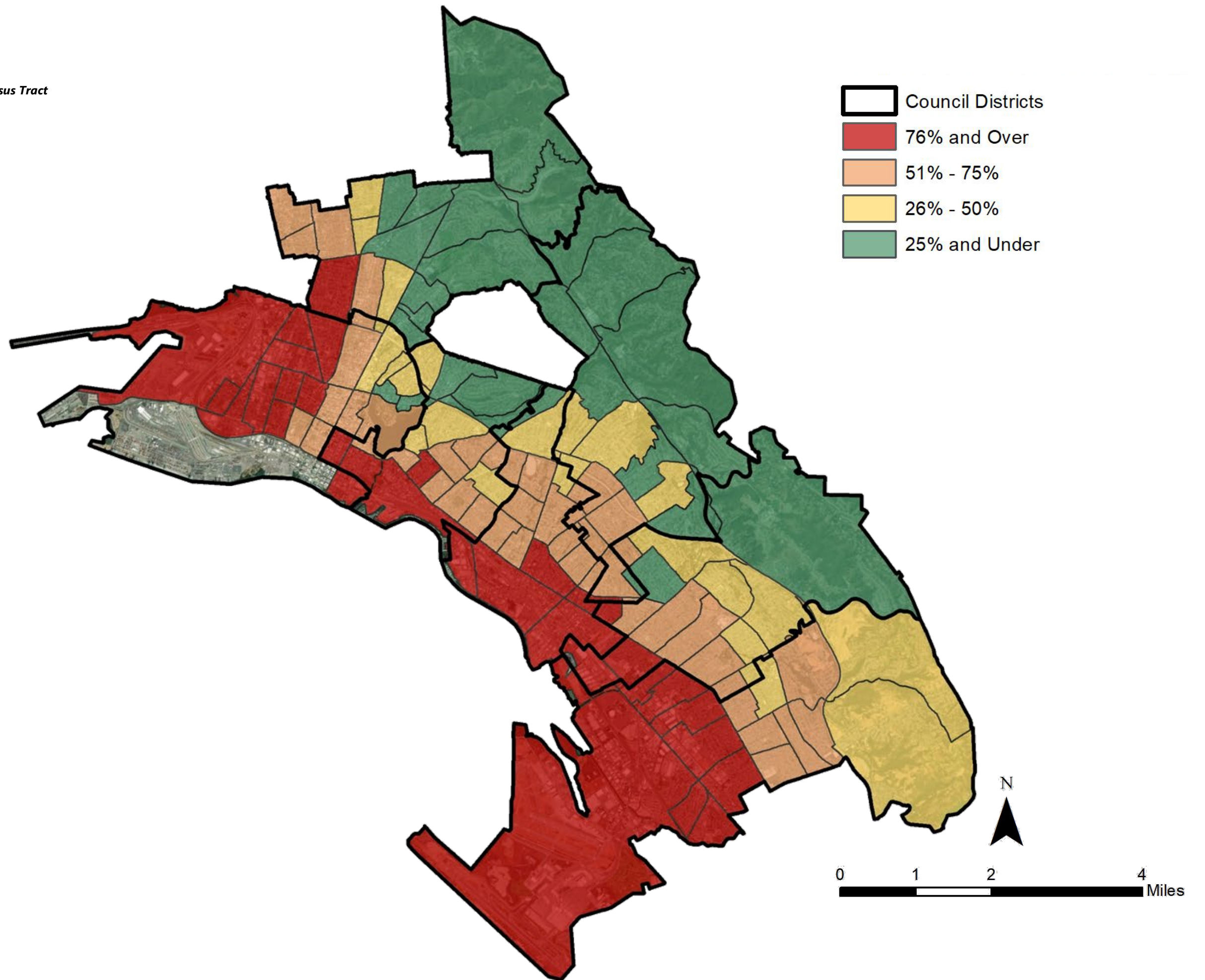
Table 8: CalEnviroScreen Population Indicators and Canopy Cover by Census Tract

Census Tracts	CalEnviroScreen Population Characteristics										
	Canopy Cover %	Asthma Score	Low Birth Weight Score	Cardiovascular Disease Score	Education Score	Linguistic Isolation Score	Poverty Score	Unemployment Score	Housing Burden Score	Population Characteristics	Population Characteristics Score
G0600010400100	51.09	18.50	2.99	3.01	1.70	3.80	7.60		8.50	8.19	0.85
G0600010400200	28.31	24.27	1.24	3.98	1.50	0.00	11.20	2.20	4.00	4.70	0.49
G0600010400300	17.70	37.93	4.13	4.42	5.00	8.90	14.30	8.80	16.00	30.04	3.12
G0600010400400	26.53	60.86	3.98	4.89	6.10	2.30	16.80	3.30	15.30	27.97	2.90
G0600010400500	13.55	110.37	5.59	7.55	3.20	2.30	25.10	6.50	19.90	49.27	5.11
G0600010400600	15.36	122.34	1.43	8.32	7.80	1.30	25.70	14.90	13.10	44.18	4.58
G0600010400700	10.89	141.49	5.76	7.65	9.40	4.50	50.50	10.50	32.40	65.59	6.80
G0600010400800	9.64	146.75	9.51	7.46	9.80	0.00	32.40	11.10	19.10	60.85	6.31
G0600010400900	14.13	165.16	7.39	8.32	6.90	3.00	32.50	5.30	24.90	60.28	6.25
G0600010401000	10.10	129.47	7.26	7.02	13.60	3.30	42.10	9.20	32.40	65.76	6.82
G0600010401100	12.17	122.26	8.28	8.32	3.20	1.80	32.90	12.80	24.10	63.72	6.61
G0600010401200	16.10	114.55	3.27	7.85	5.90	4.10	23.00	11.80	12.40	44.04	4.57
G0600010401300	8.07	101.64	4.28	5.31	17.90	15.50	56.20	15.50	22.90	60.62	6.29
G0600010401400	6.47	105.74	7.86	5.55	21.10	6.70	67.10	16.20	35.60	73.00	7.57
G0600010401500	6.74	134.76	8.14	6.61	12.30	6.20	45.00	9.70	22.60	65.60	6.80
G0600010401600	4.19	147.98	8.09	5.79	12.80	7.50	48.20	8.40	41.10	66.84	6.93
G0600010401700	1.61	159.24	6.22	6.88	15.80	6.40	37.80	6.70	27.20	62.14	6.44
G0600010401800	15.12	165.52	8.30	6.44	17.90	6.60	61.70	20.00	39.90	75.96	7.88
G0600010402200	8.86	165.52	6.27	6.44	19.10	9.30	56.80	13.80	29.30	71.44	7.41
G0600010402400	12.33	165.52	6.70	6.44	22.20	22.70	49.70	16.20	30.50	76.40	7.92
G0600010402500	12.21	165.52	7.30	6.44	18.40	12.40	75.50	25.50	20.50	75.26	7.81
G0600010402600	14.26	117.49	3.51	4.63	26.50	39.40	66.50	16.70	16.20	59.43	6.16
G0600010402700	10.07	102.28	10.84	4.13	28.00		51.00	8.30	32.30	68.30	7.08
G0600010402800	4.34	123.88	5.52	5.26	21.30	14.80	60.40	14.90	25.30	68.13	7.07
G0600010402900	4.25	124.10	0.00	5.27	21.40	20.60	49.00	7.90	17.20	49.27	5.11
G0600010403000	3.95	133.35	5.43	5.29	42.30	67.90	65.70	12.60	24.00	72.14	7.48
G0600010403100	6.13	165.44	3.95	6.44	27.20	28.10	40.90	7.00	15.20	54.85	5.69
G0600010403300	6.73	162.39	5.36	6.32	26.40	28.20	40.20	8.90	23.80	66.06	6.85
G0600010403400	9.95	122.15	5.09	5.18	9.90	13.40	35.70	5.30	22.00	52.12	5.41
G0600010403501	16.07	46.61	4.94	3.81	14.20	20.10	50.20	6.30	20.70	47.02	4.88
G0600010403502	18.32	26.00	5.19	2.45	6.30	2.60	21.10	9.40	20.80	31.29	3.25
G0600010403600	16.67	56.26	5.68	5.98	3.50	3.70	25.40	7.00	14.70	40.34	4.18
G0600010403701	14.62	49.77	2.10	4.14	4.00	4.30	23.30	1.60	9.60	19.88	2.06
G0600010403702	14.18	53.34	3.94	5.15	0.60	3.20	14.80	3.50	17.70	25.92	2.69
G0600010403800	13.83	56.26	4.75	5.98	3.60	3.90	12.70	5.00	9.60	30.06	3.12
G0600010403900	19.88	43.06	4.78	4.75	3.60	8.70	24.20	9.00	23.30	39.27	4.07
G0600010404000	17.99	32.64	1.95	5.10	0.40	4.00	20.20	6.60	12.50	18.16	1.88
G0600010404101	14.55	30.93	3.95	4.58	0.30	2.30	16.50	8.10	14.80	21.07	2.19
G0600010404102	20.20	34.14	3.75	5.42	5.90	13.70	19.70	8.30	13.80	30.79	3.19
G0600010404200	25.24	20.18	4.36	3.47	2.90	2.70	6.60	7.10	5.90	13.97	1.45
G0600010404300	28.77	25.23	4.12	4.40	2.80	1.80	6.80	5.40	4.80	12.96	1.34
G0600010404400	47.42	23.28	5.63	3.73	0.70	1.70	8.90	1.20	6.50	16.31	1.69
G0600010404501	44.32	28.07	3.60	4.50	2.70	3.00	2.90	8.80	2.90	15.74	1.63
G0600010404502	52.39	31.98	4.28	5.13	1.30	0.00	5.30	3.90	6.90	13.97	1.45
G0600010404600	68.39	28.37	2.42	4.24	2.00	0.60	7.70	3.60	4.90	7.24	0.75
G0600010404700	49.02	65.06	4.79	6.76	2.20	0.80	6.60	6.40	5.80	29.75	3.09
G0600010404800	30.11	80.31	5.39	8.16	6.10	4.40	32.40	10.50	15.60	53.92	5.59
G0600010404900	20.50	74.94	4.79	7.62	7.20	7.30	21.10	4.40	14.80	43.80	4.54
G0600010405000	29.13	46.34	3.57	4.80	4.10	4.40	17.20	5.70	7.90	22.70	2.35

CalEnviroScreen Population Characteristics											
Census Tracts	Canopy Cover %	Asthma Score	Low Birth Weight Score	Cardiovascular Disease Score	Education Score	Linguistic Isolation Score	Poverty Score	Unemployment Score	Housing Burden Score	Population Characteristics	Population Characteristics Score
G0600010405100	31.20	49.59	3.30	5.29	1.70	0.80	3.10	4.50	7.60	16.42	1.70
G0600010405200	14.03	53.98	5.80	4.59	9.10	7.30	19.70	8.30	17.80	43.90	4.55
G0600010405301	10.02	97.00	5.63	7.21	7.40	8.50	19.50	6.60	15.00	50.47	5.23
G0600010405302	6.99	73.61	5.43	5.00	21.80	29.70	47.40	12.90	26.60	64.86	6.73
G0600010405401	8.24	97.00	6.77	7.21	33.40	22.30	58.60	12.90	30.70	78.23	8.11
G0600010405402	6.86	97.00	4.46	7.21	25.90	21.90	67.60	17.30	26.10	70.35	7.30
G0600010405500	12.03	97.00	6.57	7.21	23.90	17.10	43.00	7.30	23.70	68.01	7.05
G0600010405600	14.37	58.65	7.80	4.93	18.10	9.40	38.90	10.10	21.90	58.82	6.10
G0600010405700	11.41	52.69	5.98	4.62	26.90	16.20	51.60	17.70	28.60	64.39	6.68
G0600010405800	11.48	86.89	5.33	6.50	30.80	19.50	48.80	9.10	26.10	66.14	6.86
G0600010405901	6.22	95.23	4.97	7.09	47.40	40.50	67.50	17.90	32.40	76.84	7.97
G0600010405902	9.47	97.00	6.65	7.21	46.50	37.20	59.00	13.40	24.20	79.03	8.20
G0600010406000	3.44	93.80	5.92	6.98	32.10	42.30	61.90	10.80	31.00	75.26	7.81
G0600010406100	3.31	105.75	3.97	8.54	35.80	24.40	50.10	10.10	20.00	65.59	6.80
G0600010406201	6.44	110.47	6.20	8.93	33.30	28.90	59.50	18.70	35.50	84.19	8.73
G0600010406202	10.16	110.47	3.42	8.93	42.20	42.10	70.80	14.20	29.60	73.70	7.64
G0600010406300	13.39	110.47	4.78	8.93	35.10	29.30	53.20	7.30	25.90	70.36	7.30
G0600010406400	20.26	58.55	8.98	5.06	16.00	8.00	44.20	10.30	32.20	62.03	6.43
G0600010406500	13.11	88.63	6.97	7.36	34.50	21.70	54.30	13.70	26.50	77.53	8.04
G0600010406601	12.80	66.48	5.24	6.53	26.90	11.30	47.30	15.40	23.70	64.06	6.64
G0600010406602	12.36	80.31	2.27	8.16	26.70	18.10	54.80	8.50	21.60	57.70	5.98
G0600010406700	30.13	80.31	3.89	8.16	13.40	9.90	22.60	9.60	13.60	49.03	5.08
G0600010406800	23.67	72.72	4.32	6.45	11.80	9.00	15.40	9.30	16.90	45.20	4.69
G0600010406900	22.19	84.37	6.87	6.30	7.50	1.70	29.40	8.30	15.20	50.27	5.21
G0600010407000	10.13	64.52	7.30	4.94	34.20	15.00	56.10	11.30	29.00	68.53	7.11
G0600010407101	11.76	110.47	3.96	8.93	39.20	26.90	64.10	10.60	23.40	70.32	7.29
G0600010407102	10.71	107.51	4.85	8.68	28.90	27.40	37.80	12.60	34.10	72.78	7.55
G0600010407200	7.11	110.47	4.67	8.93	49.50	30.00	66.80	10.80	26.00	75.42	7.82
G0600010407300	1.25	99.49	5.92	7.73	38.10	19.00	56.30	9.60	21.40	72.37	7.51
G0600010407400	5.09	110.47	4.23	8.93	51.20	24.50	55.10	16.70	28.80	75.38	7.82
G0600010407500	6.51	103.08	7.10	7.04	46.10	13.20	68.40	16.90	31.00	80.43	8.34
G0600010407600	12.86	97.97	6.01	7.83	28.00	11.00	47.20	8.30	21.70	67.58	7.01
G0600010407700	11.03	77.14	8.20	5.14	6.90	0.50	26.90	12.70	15.60	50.49	5.24
G0600010407800	35.46	59.07	4.49	4.09	10.40	1.90	26.10	9.60	21.60	39.64	4.11
G0600010407900	28.95	82.49	3.42	6.06	9.80	5.50	10.50	7.90	8.30	34.13	3.54
G0600010408000	39.30	48.25	4.49	4.27	5.10	1.10	10.60	8.40	6.90	24.72	2.56
G0600010408100	43.87	82.10	5.19	4.82	5.10	1.90	9.70	4.50	6.20	31.02	3.22
G0600010408200	23.93	170.91	8.16	8.64	12.00	1.70	38.20	9.80	21.60	65.90	6.83
G0600010408300	25.19	170.91	6.15	8.64	12.00	2.30	29.30	11.40	21.10	63.05	6.54
G0600010408400	8.99	170.91	8.33	8.64	28.40	7.20	64.00	16.80	39.40	82.43	8.55
G0600010408500	9.24	132.77	7.39	8.77	31.10	12.40	53.70	8.00	41.60	77.88	8.08
G0600010408600	6.92	131.31	9.57	8.08	43.30	10.00	69.40	14.20	36.20	83.27	8.64
G0600010408700	7.63	137.45	7.13	8.16	32.20	14.60	59.00	15.20	30.60	81.39	8.44
G0600010408800	5.36	161.73	8.75	11.56	46.80	18.10	66.50	20.10	35.20	92.72	9.62
G0600010408900	5.37	161.73	4.64	11.56	34.90	18.00	73.50	17.70	41.60	82.79	8.59
G0600010409000	1.91	147.84	6.15	11.34	28.30	18.30	52.50	13.30	32.50	83.94	8.71
G0600010409100	6.63	189.95	8.03	14.44	40.00	7.70	55.80	12.60	29.50	86.56	8.98

Census Tracts	CalEnviroScreen Population Characteristics										
	Canopy Cover %	Asthma Score	Low Birth Weight Score	Cardiovascular Disease Score	Education Score	Linguistic Isolation Score	Poverty Score	Unemployment Score	Housing Burden Score	Population Characteristics	Population Characteristics Score
G0600010409200	11.25	106.59	8.38	8.79	30.50	11.10	44.40	13.40	27.40	78.76	8.17
G0600010409300	6.27	166.10	4.52	12.82	35.10	17.90	60.60	16.10	25.40	79.84	8.28
G0600010409400	4.87	160.69	5.71	12.12	39.90	18.20	65.70	15.10	35.90	86.89	9.01
G0600010409500	5.31	161.73	7.93	11.56	42.90	21.20	64.20	17.30	27.60	90.77	9.41
G0600010409600	8.88	160.42	7.58	11.67	45.60	21.80	70.20	14.60	42.30	92.03	9.54
G0600010409700	11.64	137.04	6.85	8.46	36.00	12.40	54.70	14.60	32.10	80.94	8.39
G0600010409800	27.35	170.91	8.71	8.64	19.20	4.90	29.90	6.50	21.70	65.94	6.84
G0600010409900	37.38	153.91	9.26	7.91	3.50	0.90	15.80	9.60	12.00	52.23	5.42
G0600010410000	42.92	135.08	6.94	7.21	5.60	1.20	12.50	6.60	9.70	45.81	4.75
G0600010410100	12.51	149.26	8.70	7.85	16.30	7.60	46.80	16.30	37.60	76.86	7.97
G0600010410200	8.40	172.25	9.97	13.14	21.60	9.20	44.70	17.20	27.50	84.87	8.80
G0600010410300	8.05	189.95	5.38	14.44	41.90	22.50	52.10	18.40	43.00	87.63	9.09
G0600010410400	7.45	185.65	5.08	14.15	27.20	12.90	33.20	15.90	22.80	76.69	7.95
G0600010410500	9.85	165.52	6.39	6.44	17.00	5.40	64.40	23.50	21.20	69.99	7.26
G0600010421600	80.00	14.23	2.09	3.45	1.00	1.30	15.00	4.70	10.20	6.12	0.63
G0600010422000	0.00	81.29	6.82	7.03	10.00	0.00	41.50	12.10	8.80	53.45	5.54
G0600010422600	66.20	14.34		3.23							
G0600010422700	44.44	17.21	3.95	4.22	1.20	0.80	68.20	16.90	32.80	34.12	3.54
G0600010423700	31.82	22.91	1.83	4.25	2.30	1.90	45.60	7.80	24.40	23.32	2.42
G0600010423800	43.88	32.73	2.01	4.77	2.10	3.50	6.70	4.60	4.30	11.60	1.20
G0600010423901	18.97	51.81	5.43	4.31	1.60	1.80	25.30	7.00	23.40	36.92	3.83
G0600010423902	42.92	32.80	9.88	4.26	1.90	3.30	15.60	11.30	18.70	39.29	4.07
G0600010424001	17.02	66.19	4.23	4.15	13.20	2.80	46.00	10.00	24.50	45.63	4.73
G0600010424002	3.21	85.49	6.03	5.33	9.60	5.40	37.10	7.90	23.70	54.31	5.63
G0600010425103	1.04	165.16	5.06	8.32	2.80	0.90	16.60	4.30	14.90	42.31	4.39
G0600010425104	11.73	165.16	5.93	8.32	5.90	7.70	25.10	10.00	21.80	61.39	6.37
G0600010426100	17.28	27.80	1.79	3.89	1.20	2.60	7.50	4.20	4.70	7.76	0.80
G0600010426200	28.75	33.32	3.54	4.69	1.90	2.90	7.10	4.20	5.00	13.52	1.40
G0600010428301	3.39	33.09	3.50	4.67	5.40	9.10	8.50	5.00	13.10	21.46	2.23
G0600010430102	52.16	21.98	3.16	6.58	3.80	5.60	5.60	2.70	6.80	15.02	1.56
G0600010430400	37.21	52.50	2.04	7.11	8.90	4.70	13.10	4.40	1.90	25.92	2.69
G0600010432100	7.49	71.14	4.55	8.23	7.30	5.30	21.80	5.10	14.10	43.14	4.47
G0600010432200	5.05	73.43	5.12	9.09	13.00	9.20	24.40	5.30	22.50	55.75	5.78
G0600010432300	10.07	72.37	5.22	8.64	18.00	19.20	22.00	7.20	17.50	57.97	6.01
G0600010432400	0.33	73.56	5.04	9.28	14.30	13.20	39.20	14.30	17.60	64.33	6.67
G0600010432502	79.41	70.59	3.77	7.89	25.90	17.60	30.10	6.00	16.30	50.82	5.27
G0600010432700	0.00	75.08	5.36	9.79	15.70	7.60	24.40	6.00	15.10	55.61	5.77
G0600010432800	94.15	76.19	3.80	8.68	6.40	7.40	9.50	7.30	11.50	40.39	4.19
G0600010981900	0.36	165.52		6.44							
G0600010982000	1.08	165.52		6.44							
G0600010983200	6.21	165.52		6.44	4.10	2.80					
G0600130352202	53.36	10.91	4.69	3.58	2.80	2.70	6.70	5.60	11.20	14.49	1.50
G0600130353001	49.13	19.40	2.92	4.70	1.20	0.00	5.10	8.60	6.60	9.31	0.97
G0600130354001	47.37	7.00	83.00	10.00	2.00	0.00	1.00	49.00	7.00	2.34	11.00

Map 5: CalEnviroScreen Scores by Census Tract



CalEnviroScreen Indicators

Pollution Burden

Exposures – People may be exposed to a pollutant if they come in direct contact with it.

- Ozone Concentrations
- PM_{2.5} Concentrations
- Diesel PM Emissions
- Drinking Water Contaminants
- Pesticide Use
- Toxic Releases from Facilities
- Traffic Density

Environmental Effects – Environmental effects are adverse environmental conditions caused by pollutants.

- Toxic cleanup sites
- Groundwater threats from leaking underground storage sites and cleanups
- Hazardous waste facilities and generators
- Impaired water bodies
- Solid waste sites and facilities

Population Characteristics

Sensitive Populations – Sensitive population are populations with biological traits that result in increased vulnerability to pollutants.

- Asthma Emergency Department Visits
- Cardiovascular Disease (Emergency Department visits for Heart Attacks)
- Low Birth-Weight Infants

Socioeconomic Factors – Socioeconomic factors are community characteristics that result in increased vulnerability to pollutants.

- Educational Attainment
- Housing Burdened Low Income Households
- Linguistic Isolation
- Poverty
- Unemployment

CDC 500 Cities

Table 9: CDC 500 Cities and Canopy Cover by Census Tracts

Census Tracts	Canopy Cover %	CDC 500 Cities Data	
		Asthma Crude Prevalence	Poor Mental Health Prevalence
G0600010400100	51.09	7.90	7.60
G0600010400200	28.31	8.20	8.30
G0600010400300	17.70	9.00	10.00
G0600010400400	26.53	8.80	9.40
G0600010400500	13.55	9.30	10.20
G0600010400600	15.36	9.70	10.40
G0600010400700	10.89	10.60	12.70
G0600010400800	9.64	9.80	11.30
G0600010400900	14.13	10.40	12.30
G0600010401000	10.10	11.10	14.10
G0600010401100	12.17	9.10	10.50
G0600010401200	16.10	9.20	10.30
G0600010401300	8.07	9.80	12.90
G0600010401400	6.47	11.10	15.60
G0600010401500	6.74	10.50	13.60
G0600010401600	4.19	10.40	13.30
G0600010401700	1.61	9.60	12.30
G0600010401800	15.12	11.40	14.90
G0600010402200	8.86	10.30	14.50
G0600010402400	12.33	10.60	12.20
G0600010402500	12.21	13.30	19.30
G0600010402600	14.26	9.40	13.80
G0600010402700	10.07	11.10	13.90
G0600010402800	4.34	9.90	12.80
G0600010402900	4.25	8.90	12.10
G0600010403000	3.95	7.30	10.40
G0600010403100	6.13	8.60	12.90
G0600010403300	6.73	8.60	12.60
G0600010403400	9.95	8.20	9.40
G0600010403501	16.07	9.30	11.30
G0600010403502	18.32	9.50	11.00
G0600010403600	16.67	9.50	10.60
G0600010403701	14.62	9.20	10.40
G0600010403702	14.18	9.10	10.20
G0600010403800	13.83	8.50	8.90
G0600010403900	19.88	8.90	9.60
G0600010404000	17.99	8.90	9.90
G0600010404101	14.55	8.30	8.60
G0600010404102	20.20	8.40	8.70
G0600010404200	25.24	8.40	8.40
G0600010404300	28.77	8.10	7.80
G0600010404400	47.42	8.00	7.90
G0600010404501	44.32	8.00	7.50
G0600010404502	52.39	8.10	7.70
G0600010404600	68.39	8.20	8.00
G0600010404700	49.02	8.30	7.90
G0600010404800	30.11	9.10	10.00
G0600010404900	20.50	8.40	8.80
G0600010405000	29.13	8.60	8.90
G0600010405100	31.20	8.10	7.40
G0600010405200	14.03	8.60	10.00

Census Tracts	Canopy Cover %	CDC 500 Cities Data	
		Asthma Crude Prevalence	Poor Mental Health Prevalence
G0600010405301	10.02	9.10	10.40
G0600010405302	6.99	9.20	11.90
G0600010405401	8.24	9.30	13.80
G0600010405402	6.86	9.30	14.20
G0600010405500	12.03	9.00	12.30
G0600010405600	14.37	8.80	10.60
G0600010405700	11.41	10.00	13.90
G0600010405800	11.48	9.40	14.70
G0600010405901	6.22	9.60	16.40
G0600010405902	9.47	9.20	14.40
G0600010406000	3.44	9.10	14.40
G0600010406100	3.31	9.70	15.60
G0600010406201	6.44	9.10	14.30
G0600010406202	10.16	9.60	16.30
G0600010406300	13.39	9.40	14.30
G0600010406400	20.26	8.70	10.00
G0600010406500	13.11	9.70	14.40
G0600010406601	12.80	10.00	14.40
G0600010406602	12.36	9.70	13.30
G0600010406700	30.13	8.90	9.90
G0600010406800	23.67	9.10	10.90
G0600010406900	22.19	9.30	11.00
G0600010407000	10.13	10.00	14.20
G0600010407101	11.76	9.50	14.70
G0600010407102	10.71	9.40	13.00
G0600010407200	7.11	9.60	16.40
G0600010407300	1.25	9.60	15.10
G0600010407400	5.09	10.20	15.80
G0600010407500	6.51	11.90	18.40
G0600010407600	12.86	10.70	14.10
G0600010407700	11.03	10.30	10.90
G0600010407800	35.46	10.80	12.80
G0600010407900	28.95	9.10	9.80
G0600010408000	39.30	8.50	8.90
G0600010408100	43.87	8.80	8.70
G0600010408200	23.93	10.80	12.70
G0600010408300	25.19	10.50	12.10
G0600010408400	8.99	11.80	16.90
G0600010408500	9.24	11.70	16.30
G0600010408600	6.92	12.10	17.70
G0600010408700	7.63	11.50	15.70
G0600010408800	5.36	12.30	19.10
G0600010408900	5.37	11.00	17.20
G0600010409000	1.91	11.00	14.90
G0600010409100	6.63	11.00	15.00
G0600010409200	11.25	11.20	15.70
G0600010409300	6.27	11.10	16.60
G0600010409400	4.87	10.60	16.90
G0600010409500	5.31	11.00	18.10
G0600010409600	8.88	11.40	16.60
G0600010409700	11.64	12.00	16.90
G0600010409800	27.35	11.40	12.10
G0600010409900	37.38	9.70	9.00
G0600010410000	42.92	9.60	9.30
G0600010410100	12.51	11.30	13.50
G0600010410200	8.40	11.30	14.50

Census Tracts	Canopy Cover %	CDC 500 Cities Data	
		Asthma Crude Prevalence	Poor Mental Health Prevalence
G0600010410300	8.05	10.90	16.30
G0600010410400	7.45	10.70	13.70
G0600010410500	9.85	12.40	16.90
G0600010421600	80.00	7.90	7.50
G0600010422000	0.00	9.40	11.00
G0600010422600	66.20	8.50	10.90
G0600010422700	44.44	10.10	17.90
G0600010423700	31.82	9.20	12.40
G0600010423800	43.88	8.10	7.50
G0600010423901	18.97	9.00	10.00
G0600010423902	42.92	8.40	8.70
G0600010424001	17.02	9.90	12.20
G0600010424002	3.21	9.90	11.20
G0600010425103	1.04		
G0600010425104	11.73		
G0600010426100	17.28		
G0600010426200	28.75		
G0600010428301	3.39	7.70	8.60
G0600010430102	52.16		
G0600010430400	37.21		
G0600010432100	7.49	8.80	9.90
G0600010432200	5.05	9.20	11.00
G0600010432300	10.07	8.40	10.60
G0600010432400	0.33	9.10	13.10
G0600010432502	79.41	8.80	12.30
G0600010432700	0.00	8.90	10.40
G0600010432800	94.15	8.30	9.10
G0600010981900	0.36		
G0600010982000	1.08	8.60	10.90
G0600010983200	6.21	8.20	9.30
G0600130352202	53.36		
G0600130353001	49.13		
G0600130354001	47.37		

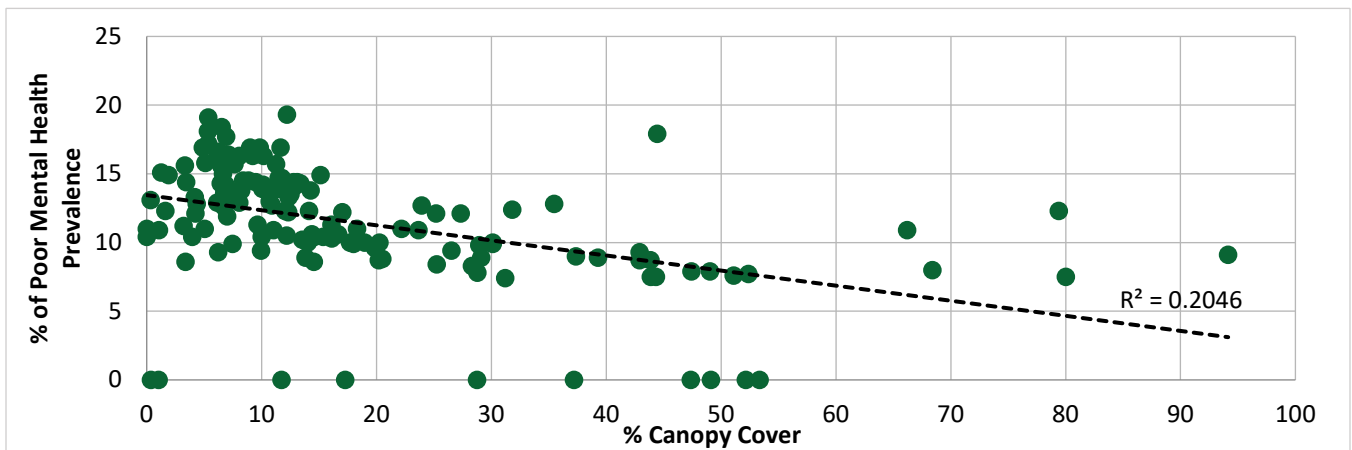


Figure 2: Prevalence of Poor Mental Health by Canopy Cove

Redlining

Table 10: Redlining by Census Tracts

Census Tracts	Canopy Cover %	% of Acreage				
		Grade Commercial	Grade A	Grade B	Grade C	Grade D
G0600010400100	51.09	0.00	27.83	15.47	0.00	0.00
G0600010400200	28.31	15.33	0.08	60.15	23.52	0.00
G0600010400300	17.70	17.89	0.00	0.54	79.50	0.00
G0600010400400	26.53	5.84	0.00	39.09	41.15	11.97
G0600010400500	13.55	18.43	0.00	0.00	47.15	21.31
G0600010400600	15.36	19.23	0.00	29.88	50.74	0.00
G0600010400700	10.89	26.63	0.00	0.00	20.05	53.02
G0600010400800	9.64	19.80	0.00	0.00	0.00	80.10
G0600010400900	14.13	17.94	0.00	0.00	8.61	73.28
G0600010401000	10.10	17.77	0.00	0.00	11.48	70.63
G0600010401100	12.17	32.21	0.00	0.00	67.01	0.00
G0600010401200	16.10	0.00	0.00	0.00	66.88	0.00
G0600010401300	8.07	39.46	0.00	0.00	59.61	0.00
G0600010401400	6.47	36.53	0.00	0.00	12.21	51.06
G0600010401500	6.74	12.93	0.00	0.00	0.00	85.07
G0600010401600	4.19	6.08	0.00	0.00	0.00	93.77
G0600010401700	1.61	59.84	0.00	0.00	0.00	28.66
G0600010401800	15.12	1.84	0.00	0.00	0.00	98.13
G0600010402200	8.86	13.81	0.00	0.00	0.00	85.80
G0600010402400	12.33	0.00	0.00	0.00	0.00	99.39
G0600010402500	12.21	17.17	0.00	0.00	0.00	82.35
G0600010402600	14.26	37.24	0.00	0.00	0.00	62.05
G0600010402700	10.07	14.80	0.00	0.00	0.00	84.05
G0600010402800	4.34	100.00	0.00	0.00	0.00	0.00
G0600010402900	4.25	99.98	0.00	0.00	0.00	0.00
G0600010403000	3.95	89.41	0.00	0.00	0.00	8.20
G0600010403100	6.13	99.99	0.00	0.00	0.00	0.00
G0600010403300	6.73	25.78	0.00	0.00	0.00	60.30
G0600010403400	9.95	21.61	0.00	0.00	4.67	0.00
G0600010403501	16.07	26.59	0.00	14.92	45.07	0.00
G0600010403502	18.32	0.07	0.00	9.46	90.47	0.00
G0600010403600	16.67	1.05	0.00	78.68	17.88	0.00
G0600010403701	14.62	5.04	0.00	0.20	85.35	0.00
G0600010403702	14.18	0.00	0.00	8.46	77.57	0.00
G0600010403800	13.83	13.44	0.00	82.60	0.00	0.00
G0600010403900	19.88	3.62	0.00	91.75	4.62	0.00
G0600010404000	17.99	0.00	0.00	39.49	41.19	0.00

Census Tracts	Canopy Cover %	% of Acreage				
		Grade Commercial	Grade A	Grade B	Grade C	Grade D
G0600010404101	14.55	0.00	0.00	0.00	77.06	0.00
G0600010404102	20.20	0.00	0.00	11.05	69.68	0.00
G0600010404200	25.24	0.00	0.15	45.09	2.78	0.00
G0600010404300	28.77	0.06	26.69	43.91	22.33	0.00
G0600010404400	47.42	0.00	4.04	21.54	31.62	0.00
G0600010404501	44.32	0.00	94.64	5.27	0.00	0.00
G0600010404502	52.39	0.00	58.06	39.32	2.63	0.00
G0600010404600	68.39	0.00	70.93	0.00	0.00	0.00
G0600010404700	49.02	0.00	84.32	14.01	0.22	0.00
G0600010404800	30.11	0.00	1.33	62.46	17.39	0.00
G0600010404900	20.50	0.00	0.97	96.88	2.06	0.00
G0600010405000	29.13	0.00	4.98	87.39	5.13	0.00
G0600010405100	31.20	0.00	53.61	45.64	0.00	0.00
G0600010405200	14.03	0.00	20.17	38.43	32.46	0.00
G0600010405301	10.02	0.00	0.00	0.00	88.95	0.00
G0600010405302	6.99	26.31	0.00	0.00	55.51	0.00
G0600010405401	8.24	15.08	0.00	0.00	84.92	0.00
G0600010405402	6.86	17.56	0.00	0.00	82.44	0.00
G0600010405500	12.03	0.00	0.00	5.07	94.93	0.00
G0600010405600	14.37	0.00	0.00	17.85	71.03	0.00
G0600010405700	11.41	0.00	0.00	15.44	72.91	0.00
G0600010405800	11.48	0.00	0.00	0.00	80.02	17.76
G0600010405901	6.22	5.13	0.00	0.00	0.40	94.33
G0600010405902	9.47	9.47	0.00	0.00	50.46	29.71
G0600010406000	3.44	34.82	0.00	0.00	0.00	60.19
G0600010406100	3.31	25.76	0.00	0.00	0.00	73.98
G0600010406201	6.44	17.67	0.00	0.00	36.36	45.71
G0600010406202	10.16	26.86	0.00	0.00	73.14	0.00
G0600010406300	13.39	0.00	0.00	8.03	76.06	15.85
G0600010406400	20.26	0.00	0.00	56.65	31.83	11.28
G0600010406500	13.11	23.25	0.00	3.54	73.21	0.00
G0600010406601	12.80	0.61	0.00	27.23	69.50	0.00
G0600010406602	12.36	18.45	0.00	14.85	62.07	0.00
G0600010406700	30.13	0.00	3.31	37.67	41.99	0.00
G0600010406800	23.67	3.50	0.00	45.20	50.25	0.00
G0600010406900	22.19	6.82	0.00	22.15	70.93	0.00
G0600010407000	10.13	15.61	0.00	0.00	84.39	0.00
G0600010407101	11.76	5.55	0.00	0.00	81.63	12.49
G0600010407102	10.71	6.55	0.00	0.00	88.12	5.31

Census Tracts	Canopy Cover %	% of Acreage				
		Grade Commercial	Grade A	Grade B	Grade C	Grade D
G0600010407200	7.11	23.62	0.00	0.00	30.50	40.69
G0600010407300	1.25	36.82	0.00	0.00	0.00	36.49
G0600010407400	5.09	39.36	0.00	0.00	58.82	1.66
G0600010407500	6.51	32.91	0.00	1.16	46.13	19.75
G0600010407600	12.86	2.62	0.00	13.50	83.87	0.00
G0600010407700	11.03	1.98	0.00	95.60	2.42	0.00
G0600010407800	35.46	0.00	0.00	27.81	27.96	0.56
G0600010407900	28.95	1.73	0.00	0.00	94.83	0.00
G0600010408000	39.30	0.00	44.12	4.64	6.49	0.00
G0600010408100	43.87	0.00	0.00	0.07	16.28	3.70
G0600010408200	23.93	1.67	0.00	36.91	31.58	13.24
G0600010408300	25.19	9.04	0.00	10.72	37.07	42.43
G0600010408400	8.99	17.69	0.00	18.10	64.20	0.00
G0600010408500	9.24	3.60	0.00	15.79	59.59	20.75
G0600010408600	6.92	17.09	0.00	39.70	21.38	11.57
G0600010408700	7.63	18.38	0.00	23.49	40.45	16.65
G0600010408800	5.36	15.67	0.00	0.00	0.00	84.32
G0600010408900	5.37	11.23	0.00	0.00	0.00	88.67
G0600010409000	1.91	0.00	0.00	0.00	0.00	1.35
G0600010409100	6.63	0.00	0.00	0.00	0.00	0.00
G0600010409200	11.25	0.00	0.00	0.00	0.00	0.00
G0600010409300	6.27	0.00	0.00	0.00	0.00	92.56
G0600010409400	4.87	0.00	0.00	0.00	0.00	97.90
G0600010409500	5.31	2.47	0.00	0.00	0.00	97.45
G0600010409600	8.88	17.82	0.00	0.00	41.00	40.60
G0600010409700	11.64	0.09	0.00	20.41	64.13	7.24
G0600010409800	27.35	8.41	0.00	22.84	15.85	4.09
G0600010409900	37.38	0.00	0.00	33.65	13.91	2.02
G0600010410000	42.92	0.00	0.00	8.68	28.44	0.00
G0600010410100	12.51	5.17	0.00	5.66	82.69	0.00
G0600010410200	8.40	0.00	0.00	0.00	99.99	0.00
G0600010410300	8.05	13.93	0.00	0.00	65.49	20.26
G0600010410400	7.45	14.69	0.00	7.93	49.81	19.96
G0600010410500	9.85	8.89	0.00	0.00	0.00	83.26
G0600010421600	80.00	0.00	0.00	0.00	0.00	0.00
G0600010422000	0.00	2.36	0.00	0.00	0.00	96.89
G0600010422600	66.20	0.00	0.00	88.04	0.00	0.00
G0600010422700	44.44	0.00	0.00	91.36	0.00	0.00
G0600010423700	31.82	0.00	17.51	0.00	0.00	0.00

Census Tracts	Canopy Cover %	% of Acreage				
		Grade Commercial	Grade A	Grade B	Grade C	Grade D
G0600010423800	43.88	0.00	60.62	0.75	0.00	0.00
G0600010423901	18.97	6.82	0.00	0.00	45.73	0.00
G0600010423902	42.92	1.17	0.00	83.56	2.19	0.00
G0600010424001	17.02	29.39	0.00	0.00	0.00	83.27
G0600010424002	3.21	0.00	0.00	0.00	0.00	9.65
G0600010425103	1.04	0.00	0.00	0.00	0.00	100.09
G0600010425104	11.73	22.16	0.00	0.00	0.60	46.10
G0600010426100	17.28	0.00	67.39	4.36	0.00	0.00
G0600010426200	28.75	0.00	0.00	2.75	1.27	0.00
G0600010428301	3.39	0.00	0.00	0.00	0.00	0.00
G0600010430102	52.16	0.00	0.04	0.25	0.57	0.00
G0600010430400	37.21	0.00	0.00	0.00	0.00	0.00
G0600010432100	7.49	0.00	0.00	0.00	49.08	0.00
G0600010432200	5.05	0.12	0.00	0.23	0.00	9.13
G0600010432300	10.07	0.00	0.00	0.00	0.00	94.13
G0600010432400	0.33	0.00	0.00	0.00	0.00	0.00
G0600010432502	79.41	0.00	0.00	0.00	0.00	0.00
G0600010432700	0.00	0.00	0.00	0.00	0.00	0.00
G0600010432800	94.15	0.00	0.00	5.25	0.00	0.00
G0600010981900	0.36	48.09	0.00	0.00	0.00	5.17
G0600010982000	1.08	69.05	0.00	0.00	0.00	14.75
G0600010983200	6.21	90.38	0.00	0.00	0.00	8.25
G0600130352202	53.36	0.00	88.39	0.00	0.00	0.00
G0600130353001	49.13	0.00	30.00	31.64	0.00	0.00
G0600130354001	47.37	0.00	0.00	0.00	0.00	0.00

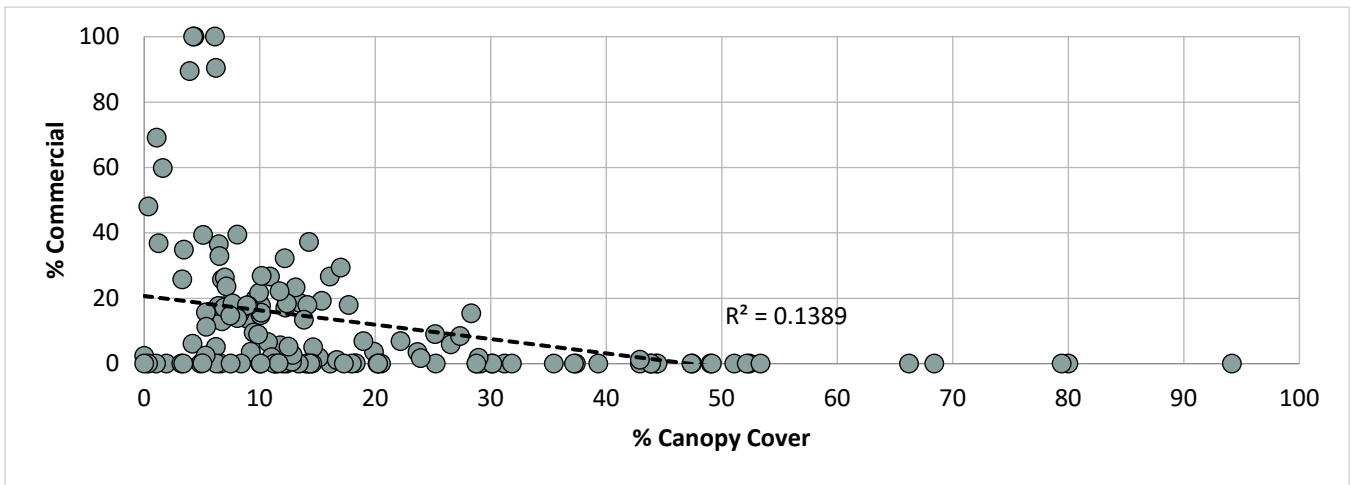


Figure 3: Commercial Redlining and Canopy Cover by Census Tracts

Map 4: Historic Redlining Grades within Oakland's Current Boundaries



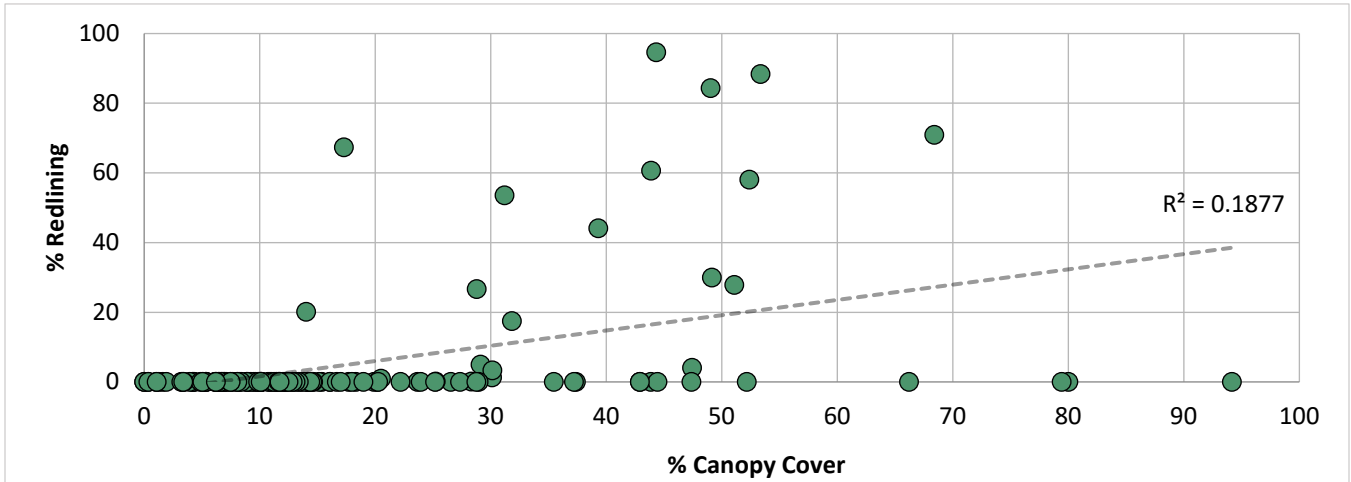


Figure 4: Grade A Redlining and Canopy Cover by Census Tracts

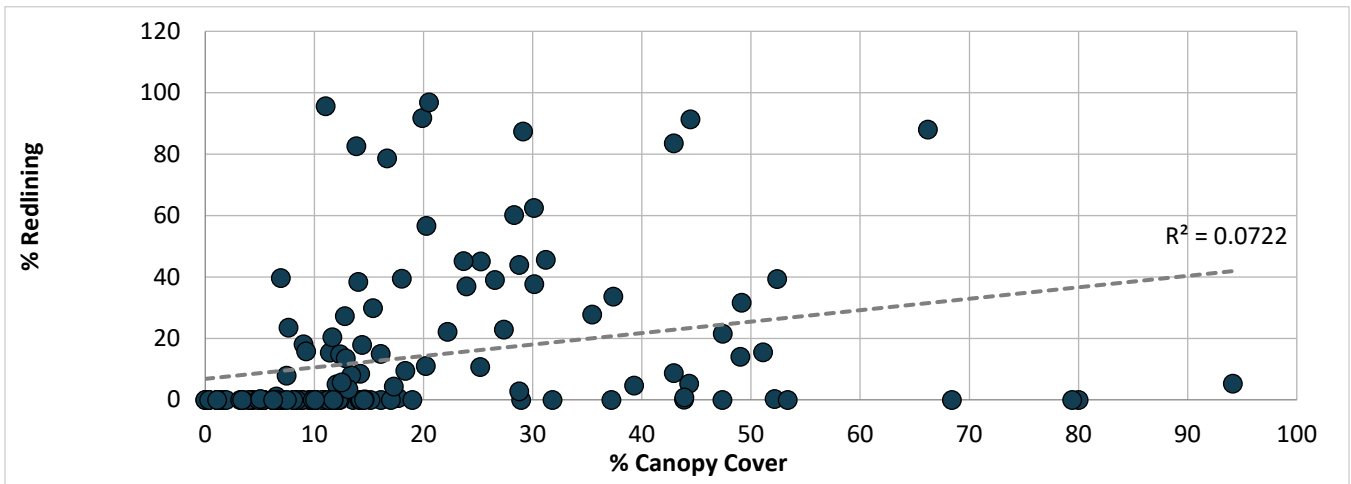


Figure 5: Grade B Redlining and Canopy Cover by Census Tracts

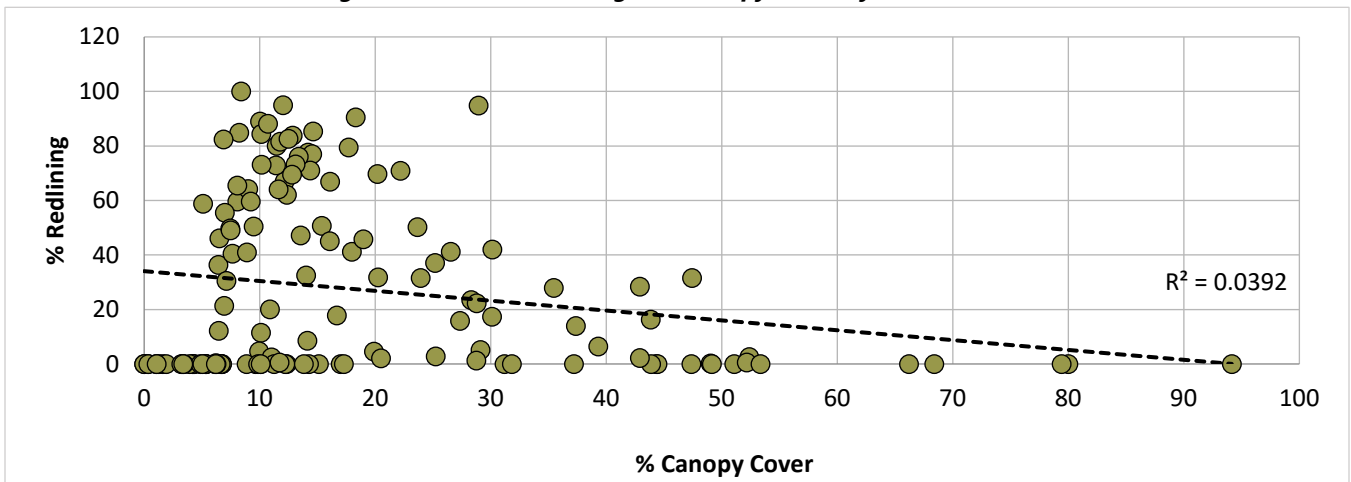


Figure 6: Grade C Redlining and Canopy Cover by Census Tracts

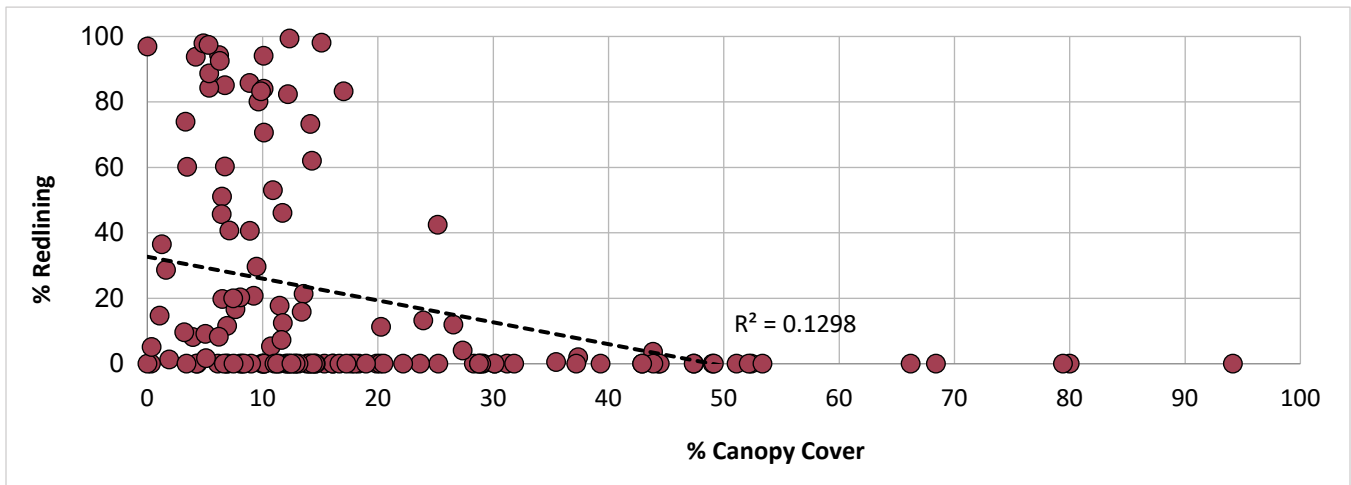


Figure 7: Grade D Redlining and Canopy Cover by Census Tracts

Public versus Private

Table 11: Private and Public Property by Council District

	Overall Oakland	Council District 1	Council District 2	Council District 3	Council District 4	Council District 5	Council District 6	Council District 7
Private Property Acres	23,255.2	4,046.7	1,551.6	3,771.2	1,905.7	852.3	3,729.4	7,398.2
Private Property Canopy Acres	4,856.3	1,342.0	218.04	135.8	877.6	73.2	1,138.7	1,070.9
Public Property Acres	10,525.7	1,572.5	953.2	1,732.8	1,905.7	852.3	1,200.2	2,308.9
Public Property Canopy Acres	2,274.0	402.9	109.12	153.1	877.6	73.2	244.2	413.9

Distribution of Community Urban Forest Assets

Table 12: Population Characteristics and Urban Forest Assets by Council District

	Overall Oakland	Council District 1	Council District 2	Council District 3	Council District 4	Council District 5	Council District 6	Council District 7
Total Acres	36,367.13	5,619.65	2,504.86	5,503.81	5,450.00	2,650.88	4,929.88	9,708.04
Population 2019	426,242	65,103	61,884	61,308	52,675	57,197	61,917	65,008
Population Density (Residents/miile ²)	7,502	7,415	15,827	7,129	6,185	13,816	8,041	4,286
Canopy Acres	1,484.76	1,745.16	327.11	288.80	2,350.18	238.70	1,382.92	1,484.76
Canopy Cover %	15.29	31.05	13.06	5.25	43.12	9.00	28.05	15.29
# Community Trees	68,664	12,805	9,192	13,422	9,496	6,930	7,067	9,752
Vacant planting sites ²	31,137	4,219	4,750	4,106	4,184	4,430	5,267	4,181
Community Trees per 1,000 Residents	161	197	149	219	180	121	114	150
# of Parks	380	42	75	99	47	39	28	50
Park Acres	2,277.70	134.65	96.51	386.62	640.26	45.65	143.63	830.38
Park Acres per 1,000 Residents	5.34	2.07	1.56	6.31	12.15	0.80	2.32	12.77

² Includes some sites where there is an existing tree stump

Population Characteristics

Table 13: Race by Census Tracts

Census Tracts	Canopy Cover %	Race													
		White	% White	Black or African American	% Black or African American	American Indian or Native Alaskan	% American Indian or Native Alaskan	Asian	% Asian	Native Hawaiian or Other Pacific Islander	% Native Hawaiian or Other Pacific Islander	Other Race	% Other Race	Two or More Races	% Two or More Races
G0600010409000	1.91	440	11.27	1,636	41.96	48	1.23	221	5.66	6	0.15	2,124	54.46	208	5.33
G0600010408800	5.36	727	10.31	2,718	38.53	36	0.51	308	4.37	361	5.12	2,866	40.63	133	1.89
G0600010409100	6.63	927	17.06	1,315	24.20	0	0.00	148	2.72	27	0.50	2,688	49.49	197	3.63
G0600010409200	11.25	1,019	20.29	800	15.93	0	0.00	443	8.82	15	0.30	2,335	46.50	168	3.35
G0600010407300	1.25	1,065	43.65	266	10.90	3	0.12	236	9.67	12	0.49	753	30.86	85	3.48
G0600010409500	5.31	836	16.13	1,598	30.83	0	0.00	94	1.81	26	0.50	2,107	40.65	330	6.37
G0600010406000	3.44	1,148	34.33	525	15.70	6	0.18	1,590	47.55	3	0.09	444	13.28	80	2.39
G0600010402200	8.86	829	32.81	798	31.58	40	1.58	405	16.03	0	0.00	212	8.39	193	7.64
G0600010409400	4.87	517	9.97	1,653	31.86	13	0.25	233	4.49	36	0.69	2,432	46.88	94	1.81
G0600010408900	5.37	506	16.24	853	27.38	0	0.00	162	5.20	35	1.12	1,832	58.81	158	5.07
G0600010401800	15.12	654	36.45	693	38.63	12	0.67	99	5.52	0	0.00	262	14.60	81	4.52
G0600010406100	3.31	1,664	35.72	432	9.27	161	3.46	855	18.35	28	0.60	1,509	32.39	84	1.80
G0600010401400	6.47	1,510	34.86	1,511	34.89	73	1.69	570	13.16	15	0.35	580	13.39	473	10.92
G0600010401700	1.61	1,426	47.63	513	17.12	0	0.00	366	12.23	17	0.57	413	13.79	275	9.19
G0600010403000	3.95	226	7.61	127	4.28	10	0.34	2,366	79.69	72	2.43	43	1.45	61	2.05
G0600010432400	0.33	9	73.61	0	2.63	0	0.00	2	20.13	0	0.00	0	0.23	1	6.70
G0600010409300	6.27	910	21.30	1,050	24.58	105	2.46	69	1.62	83	1.94	1,801	42.16	110	2.57
G0600010401500	6.74	1,108	41.61	1,065	39.99	12	0.45	129	4.84	24	0.90	272	10.21	229	8.60
G0600010402500	12.21	211	11.81	1,065	59.63	0	0.00	237	13.27	0	0.00	113	6.33	155	8.68
G0600010403300	6.73	1,250	29.48	312	7.36	121	2.85	2,182	51.46	0	0.00	74	1.75	239	5.64
G0600010410500	9.85	0	38.13	0	2.53	0	0.00	0	36.31	0	0.00	0	3.96	0	1.58
G0600010402400	12.33	786	28.20	1,453	52.13	1	0.04	362	12.99	10	0.36	78	2.80	176	6.32
G0600010401000	10.10	2,503	41.55	1,978	32.84	10	0.17	412	6.84	95	1.58	542	9.00	593	9.84
G0600010401600	4.19	816	35.96	822	36.23	0	0.00	245	10.80	21	0.93	233	10.27	152	6.70
G0600010407200	7.11	2,001	29.03	598	8.67	136	1.97	968	14.04	3	0.04	3,037	44.05	242	3.51
G0600010407400	5.09	478	10.87	844	19.19	33	0.75	337	7.66	9	0.20	2,518	57.24	312	7.09
G0600010425104	11.73	0	67.03	0	1.71	0	0.21	0	19.60	0	0.71	0	3.30	0	8.73
G0600010402700	10.07	540	29.32	811	44.03	12	0.65	205	11.13	0	0.00	261	14.17	61	3.31
G0600010405401	8.24	887	22.80	643	16.53	0	0.00	1,277	32.83	0	0.00	625	16.07	216	5.55
G0600010422000	0.00	1	65.06	0	2.16	0	0.66	0	19.03	0	0.50	0	1.61	0	5.27
G0600010406201	6.44	567	11.67	1,056	21.74	79	1.63	1,424	29.31	18	0.37	1,681	34.60	170	3.50
G0600010402800	4.34	1,348	29.06	1,706	36.78	26	0.56	832	17.93	0	0.00	126	2.72	442	9.53
G0600010407500	6.51	558	12.24	1,254	27.50	46	1.01	278	6.10	5	0.11	1,796	39.39	362	7.94
G0600010401300	8.07	1,637	42.46	1,149	29.81	34	0.88	663	17.20	0	0.00	136	3.53	302	7.83
G0600010406202	10.16	1,508	31.74	696	14.65	323	6.80	622	13.09	0	0.00	1,488	31.32	180	3.79
G0600010400700	10.89	2,183	42.67	1,459	28.52	14	0.27	329	6.43	0	0.00	572	11.18	571	11.16
G0600010402600	14.26	288	24.08	322	26.92	6	0.50	481	40.22	0	0.00	59	4.93	87	7.27
G0600010405901	6.22	813	18.70	716	16.47	61	1.40	1,618	37.21	37	0.85	1,111	25.55	70	1.61
G0600010406500	13.11	1,315	21.72	1,255	20.73	410	6.77	947	15.64	185	3.06	2,073	34.24	401	6.62
G0600010400800	9.64	1,821	48.18	1,004	26.56	29	0.76	616	16.30	0	0.00	203	5.38	383	10.13
G0600010400900	14.13	1,236	50.10	710	28.77	61	2.47	101	4.09	0	0.00	207	8.38	153	6.19
G0600010403100	6.13	698	41.85	376	22.54	6	0.36	807	48.38	12	0.72	104	6.24	98	5.88
G0600010405902	9.47	390	13.09	358	12.02	26	0.87	1,459	48.98	0	0.00	536	17.99	173	5.81
G0600010405302	6.99	861	35.09	312	12.71	8	0.33	1,004	40.91	0	0.00	53	2.16	135	5.50

Census Tracts	Canopy Cover %	Race													
		White	% White	Black or African American	% Black or African American	American Indian or Native Alaskan	% American Indian or Native Alaskan	Asian	% Asian	Native Hawaiian or Other Pacific Islander	% Native Hawaiian or Other Pacific Islander	Other Race	% Other Race	Two or More Races	% Two or More Races
G0600010410100	12.51	996	25.86	966	25.08	38	0.99	133	3.45	51	1.32	1,441	37.42	232	6.02
G0600010407102	10.71	611	13.84	1,143	25.88	121	2.74	628	14.22	10	0.23	1,471	33.31	403	9.13
G0600010409600	8.88	925	26.29	1,975	56.12	11	0.31	285	8.10	0	0.00	120	3.41	200	5.68
G0600010432502	79.41	721	30.98	726	31.20	126	5.41	109	4.68	0	0.00	609	26.17	199	8.55
G0600010432300	10.07	7	70.96	0	0.28	0	0.04	2	18.43	0	0.35	0	1.06	1	6.10
G0600010408700	7.63	1,299	17.03	3,312	43.42	21	0.28	181	2.37	0	0.00	2,398	31.44	698	9.15
G0600010424002	3.21	3	76.78	0	0.70	0	0.00	1	20.27	0	0.00	0	0.00	0	4.08
G0600010405402	6.86	679	20.73	894	27.30	45	1.37	938	28.64	102	3.11	542	16.55	157	4.79
G0600010405700	11.41	620	18.05	747	21.75	17	0.50	1,625	47.32	0	0.00	303	8.82	219	6.38
G0600010406400	20.26	1,037	42.05	536	21.74	29	1.18	483	19.59	16	0.65	223	9.04	221	8.96
G0600010407600	12.86	1,317	19.94	2,496	37.78	0	0.00	526	7.96	0	0.00	1,309	19.82	679	10.28
G0600010401100	12.17	2,487	56.96	361	8.27	0	0.00	849	19.45	12	0.27	260	5.96	318	7.28
G0600010403400	9.95	1,821	39.44	864	18.71	19	0.41	1,128	24.43	35	0.76	206	4.46	267	5.78
G0600010410300	8.05	547	23.05	1,663	70.08	7	0.29	294	12.39	24	1.01	110	4.64	60	2.53
G0600010405500	12.03	1,062	26.14	879	21.63	55	1.35	1,619	39.85	41	1.01	56	1.38	168	4.13
G0600010406300	13.39	1,014	22.92	1,161	26.24	19	0.43	1,061	23.98	0	0.00	815	18.42	313	7.07
G0600010409800	27.35	1,053	31.30	1,310	38.94	8	0.24	158	4.69	29	0.86	111	3.30	570	16.96
G0600010407000	10.13	1,156	19.51	1,234	20.83	119	2.01	1,453	24.53	0	0.00	1,132	19.11	775	13.08
G0600010407101	11.76	621	16.62	571	15.28	8	0.21	956	25.58	0	0.00	1,586	42.44	79	2.11
G0600010408600	6.92	949	13.66	2,526	36.36	28	0.40	302	4.35	0	0.00	2,857	41.13	434	6.25
G0600010402900	4.25	348	24.39	259	18.15	3	0.21	534	37.42	0	0.00	178	12.47	84	5.89
G0600010410200	8.40	814	19.45	1,505	35.96	123	2.94	486	11.61	23	0.55	1,376	32.88	150	3.58
G0600010406601	12.80	976	19.36	1,042	20.67	107	2.12	1,089	21.60	0	0.00	1,182	23.44	559	11.09
G0600010408500	9.24	271	4.52	2,236	37.29	2	0.03	132	2.20	113	1.88	2,920	48.69	303	5.05
G0600010410400	7.45	0	70.64	0	11.49	0	0.10	0	8.50	0	0.00	0	1.50	0	11.88
G0600010405600	14.37	1,292	39.25	602	18.29	96	2.92	727	22.08	0	0.00	325	9.87	227	6.90
G0600010425103	1.04	12	71.64	0	2.24	0	0.08	2	14.72	0	0.14	0	0.39	1	8.58
G0600010403501	16.07	1,879	40.46	1,096	23.60	54	1.16	835	17.98	39	0.84	58	1.25	531	11.43
G0600010406602	12.36	530	18.96	485	17.35	62	2.22	973	34.81	5	0.18	474	16.96	169	6.05
G0600010408300	25.19	1,427	26.81	1,900	35.69	20	0.38	589	11.07	123	2.31	622	11.69	366	6.88
G0600010405800	11.48	1,074	23.12	962	20.71	108	2.33	1,871	40.28	25	0.54	224	4.82	106	2.28
G0600010409900	37.38	387	14.47	1,513	56.58	0	0.00	129	4.82	14	0.52	266	9.95	358	13.39
G0600010405301	10.02	1,679	56.82	352	11.91	0	0.00	322	10.90	13	0.44	329	11.13	259	8.76
G0600010410000	42.92	215	6.33	2,179	64.11	31	0.91	104	3.06	86	2.53	913	26.86	102	3.00
G0600010432700	0.00	367	10.40	1,154	32.74	26	0.73	242	6.88	0	0.00	1,512	42.89	318	9.03
G0600010405200	14.03	2,341	45.12	604	11.64	36	0.69	1,635	31.52	25	0.48	151	2.91	391	7.54
G0600010408400	8.99	502	16.25	1,620	52.44	0	0.00	52	1.68	21	0.68	851	27.55	155	5.02
G0600010432200	5.05	341	54.82	53	8.52	9	1.45	138	22.19	3	0.48	19	3.05	20	3.22
G0600010409700	11.64	1,208	32.83	1,715	46.60	11	0.30	265	7.20	0	0.00	72	1.96	371	10.08
G0600010424001	17.02	7	38.63	4	25.72	0	0.63	3	17.47	0	0.38	1	5.58	1	8.34
G0600010403600	16.67	1,916	36.48	2,396	45.62	13	0.25	613	11.67	0	0.00	224	4.27	408	7.77
G0600010400500	13.55	2,035	53.78	882	23.30	0	0.00	446	11.78	22	0.58	110	2.91	628	16.59
G0600010400600	15.36	936	57.14	375	22.89	3	0.18	193	11.78	15	0.92	39	2.38	184	11.23
G0600010401200	16.10	1,772	68.76	300	11.64	8	0.31	301	11.68	0	0.00	119	4.62	119	4.62
G0600010404900	20.50	2,689	67.68	403	10.14	43	1.08	674	16.96	31	0.78	34	0.86	323	8.13
G0600010432100	7.49	14	22.22	23	36.51	2	3.17	20	31.75	0	0.00	0	0.00	4	6.35
G0600010403900	19.88	2,474	61.54	549	13.66	9	0.22	655	16.29	0	0.00	77	1.92	287	7.14
G0600010404800	30.11	1,517	56.04	423	15.63	92	3.40	293	10.82	0	0.00	52	1.92	270	9.97
G0600010432800	94.15	0	74.53	0	3.03	0	0.00	0	12.60	0	0.54	0	0.87	0	6.25
G0600010408200	23.93	1,104	24.78	2,375	53.31	57	1.28	238	5.34	30	0.67	303	6.80	463	10.39
G0600010406900	22.19	1,854	50.00	670	18.07	15	0.40	593	15.99	12	0.32	118	3.18	346	9.33
G0600010403502	18.32	963	47.32	530	26.04	0	0.00	254	12.48	0	0.00	76	3.73	221	10.86

Census Tracts	Canopy Cover %	Race													
		White	% White	Black or African American	% Black or African American	American Indian or Native Alaskan	% American Indian or Native Alaskan	Asian	% Asian	Native Hawaiian or Other Pacific Islander	% Native Hawaiian or Other Pacific Islander	Other Race	% Other Race	Two or More Races	% Two or More Races
G0600010406700	30.13	2,754	55.17	765	15.32	34	0.68	1,059	21.21	0	0.00	258	5.17	289	5.79
G0600010407800	35.46	1,105	40.42	645	23.59	5	0.18	557	20.37	3	0.11	188	6.88	225	8.23
G0600010423901	18.97	1	31.83	1	35.38	0	0.84	0	10.85	0	0.00	1	16.31	0	7.82
G0600010422700	44.44	6	72.88	1	11.77	0	0.97	1	9.57	0	0.00	0	2.87	1	7.06
G0600010423902	42.92	2	48.62	1	16.46	0	0.07	1	27.39	0	0.00	0	0.00	0	7.67
G0600010406800	23.67	1,513	43.11	412	11.74	16	0.46	761	21.68	0	0.00	568	16.18	341	9.72
G0600010407700	11.03	1,532	35.73	1,784	41.60	0	0.00	210	4.90	17	0.40	253	5.90	326	7.60
G0600010407900	28.95	1,508	49.06	530	17.24	0	0.00	456	14.83	2	0.07	186	6.05	191	6.21
G0600010403702	14.18	1,056	55.64	298	15.70	0	0.00	341	17.97	0	0.00	120	6.32	115	6.06
G0600010400300	17.70	3,748	74.96	459	9.18	0	0.00	590	11.80	23	0.46	134	2.68	97	1.94
G0600010408100	43.87	2,702	44.24	1,506	24.66	0	0.00	1,303	21.33	0	0.00	296	4.85	513	8.40
G0600010403800	13.83	2,340	70.03	435	13.01	0	0.00	392	11.73	4	0.12	10	0.30	169	5.06
G0600010404102	20.20	1,888	72.48	130	4.99	36	1.38	335	12.86	20	0.77	93	3.57	151	5.80
G0600010400400	26.53	2,747	71.51	291	7.57	44	1.14	420	10.93	0	0.00	199	5.18	305	7.94
G0600010423700	31.82	3	73.57	0	3.52	0	0.00	1	15.57	0	0.00	0	1.00	0	7.09
G0600010428301	3.39	2	33.91	1	12.14	0	1.17	2	27.87	0	2.54	1	15.47	1	7.44
G0600010405000	29.13	2,200	67.30	407	12.45	10	0.31	389	11.90	0	0.00	64	1.96	324	9.91
G0600130354001	47.37	11	75.44	0	0.00	0	0.00	2	15.65	0	2.88	0	0.28	1	6.46
G0600010403701	14.62	1,461	52.27	800	28.62	0	0.00	381	13.63	0	0.00	170	6.08	156	5.58
G0600010404101	14.55	2,004	64.90	237	7.67	11	0.36	380	12.31	0	0.00	115	3.72	270	8.74
G0600010404700	49.02	1,616	77.73	128	6.16	0	0.00	286	13.76	9	0.43	27	1.30	71	3.42
G0600010404000	17.99	1,853	61.81	244	8.14	29	0.97	295	9.84	71	2.37	117	3.90	286	9.54
G0600010430400	37.21	58	96.67	0	0.00	0	0.00	0	0.00	0	0.00	0	0.00	0	0.00
G0600010405100	31.20	2,816	65.12	589	13.62	0	0.00	435	10.06	0	0.00	78	1.80	367	8.49
G0600010408000	39.30	1,651	60.78	255	9.38	12	0.44	499	18.36	2	0.07	143	5.26	137	5.04
G0600010404200	25.24	2,531	65.76	256	6.65	8	0.21	736	19.12	33	0.86	72	1.87	241	6.26
G0600010404400	47.42	4,030	73.72	131	2.39	40	0.73	728	13.32	0	0.00	0	0.00	691	12.64
G0600010426200	28.75	2	40.51	1	20.28	0	1.58	0	11.07	0	0.92	0	11.25	0	6.17
G0600010404300	28.77	2,315	67.36	57	1.66	0	0.00	467	13.59	0	0.00	176	5.12	428	12.45
G0600010400100	51.09	2,383	76.85	106	3.43	0	0.00	396	12.78	0	0.00	34	1.09	186	6.00
G0600010404501	44.32	1,317	73.37	122	6.80	0	0.00	209	11.64	9	0.50	18	1.00	134	7.47
G0600010404502	52.39	4,679	77.13	104	1.71	13	0.21	624	10.28	0	0.00	74	1.22	394	6.49
G0600010423800	43.88	0	48.16	0	21.99	0	0.60	0	8.34	0	0.29	0	12.24	0	5.40
G0600010430102	52.16	1	40.03	0	13.27	0	1.93	1	35.59	0	0.96	0	5.74	0	6.23
G0600010426100	17.28	3	48.92	1	11.05	0	0.43	1	17.81	0	1.68	1	8.08	1	7.62
G0600130352202	53.36	0	31.89	0	13.98	0	0.06	0	40.52	0	0.17	0	7.21	0	4.40
G0600130353001	49.13	0	60.80	0	5.89	0	0.42	0	16.55	0	0.74	0	6.94	0	7.40
G0600010400200	28.31	1,576	77.88	52	2.57	4	0.20	171	8.44	0	0.00	17	0.84	186	9.19
G0600010404600	68.39	3,350	71.54	178	3.80	8	0.17	640	13.67	106	2.26	95	2.03	243	5.18
G0600010421600	80.00	0	57.53	0	2.57	0	0.93	0	31.15	0	0.20	0	5.15	0	6.69
G0600010422600	66.20	5	84.95	0	2.35	0	0.00	0	7.00	0	0.00	0	0.30	0	4.41
G0600010981900	0.36	0	36.64	0	4.75	0	0.31	0	47.02	0	0.84	0	2.98	0	9.69
G0600010982000	1.08	0	61.79	0	1.48	0	0.18	0	21.46	0	0.42	0	3.74	0	8.17
G0600010983200	6.21	1	47.97	0	7.58	0	0.38	1	31.72	0	1.91	0	9.69	0	7.12

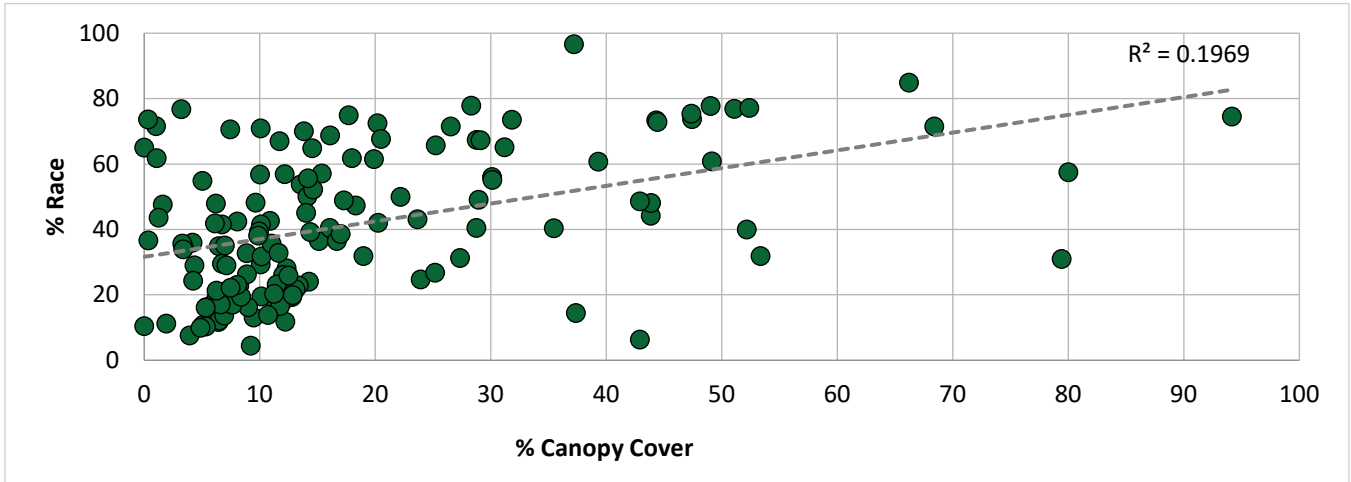


Figure 8: White and Canopy Cover by Census Tracts

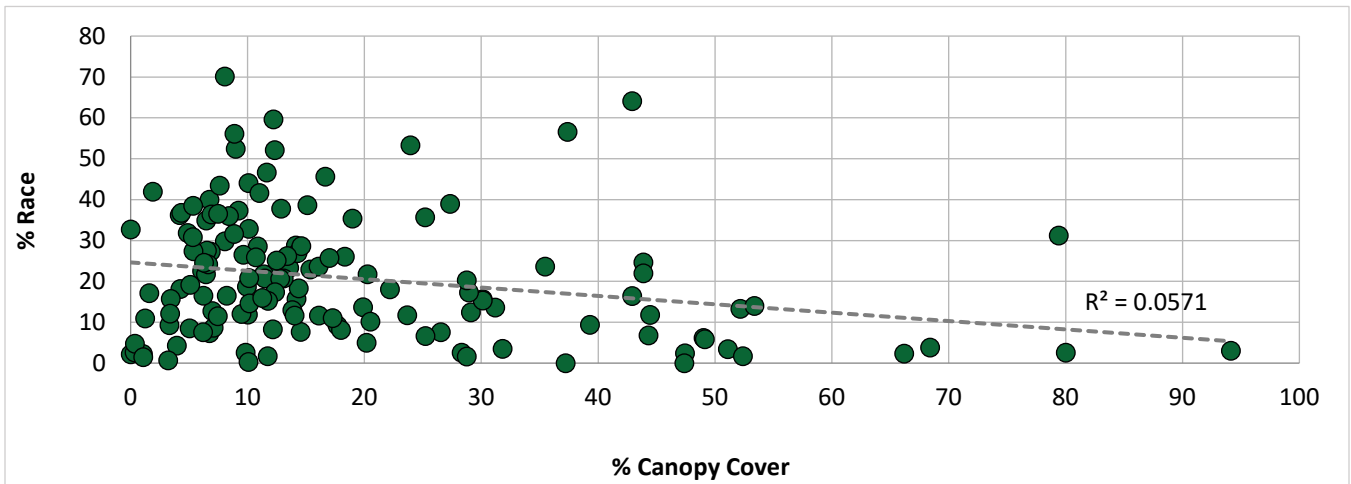


Figure 9: Black or African American and Canopy Cover by Census Tracts

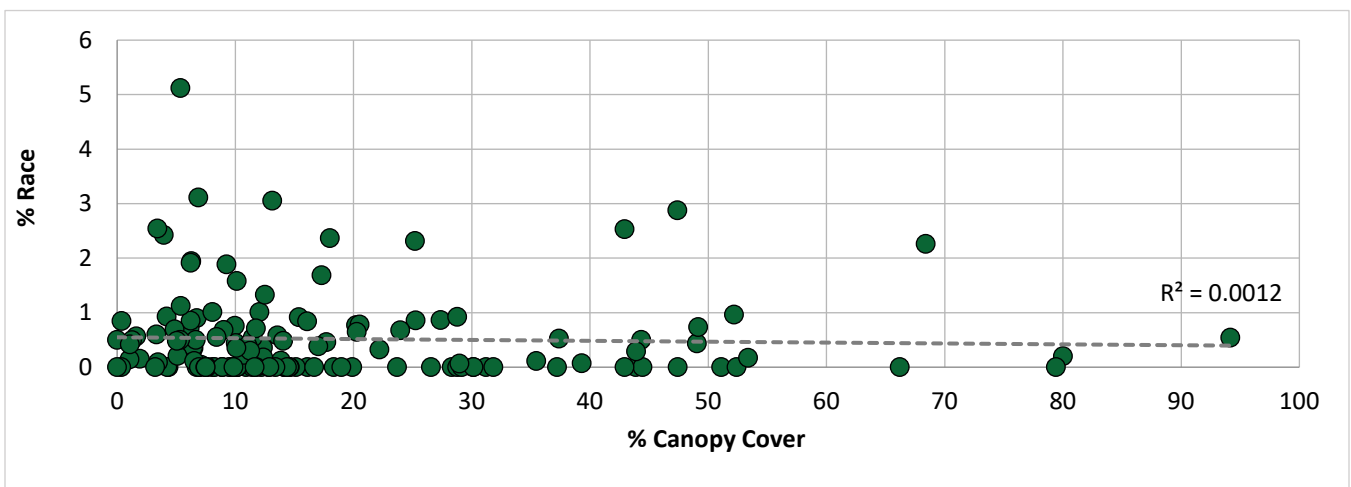


Figure 10: Native Hawaiian or Other Pacific Islander and Canopy Cover by Census Tracts

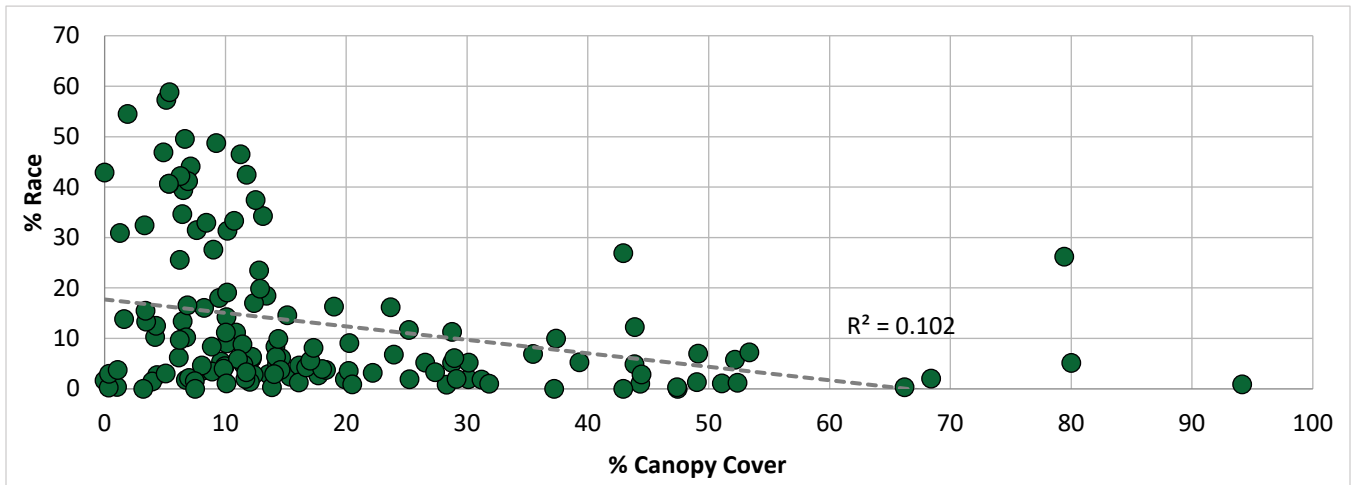


Figure 11: Other Race and Canopy Cover by Census Tracts

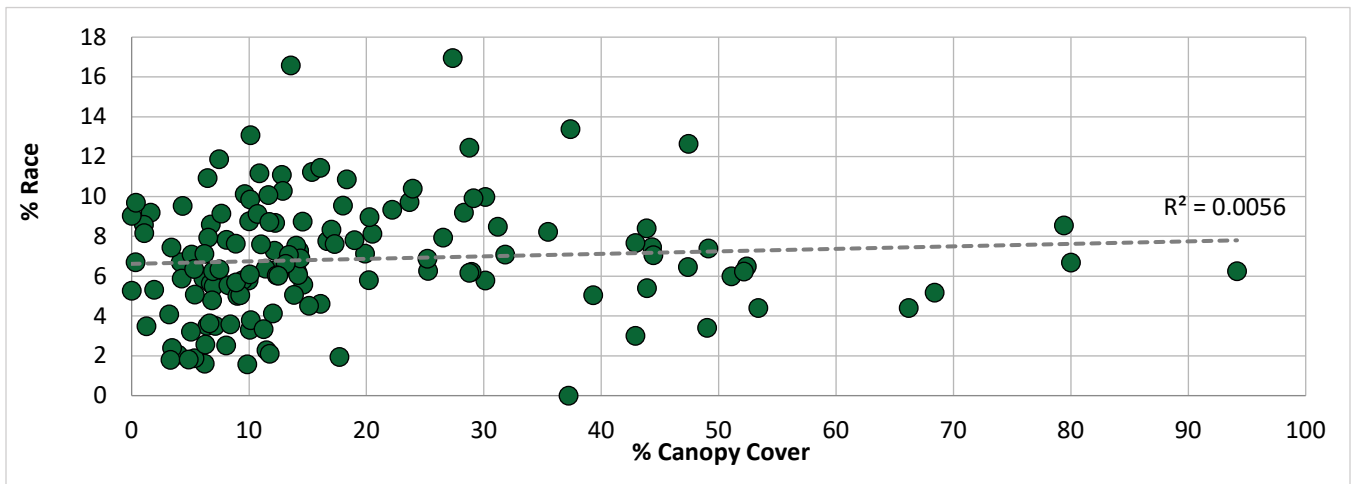


Figure 12: Two or more Races and Canopy Cover by Census Tracts

Table 14: Homeownership by Census Tracts

Census Tracts	Canopy Cover %	Total Housing Units	Ownership					
			Owned	% Owned	Renter	% Rented	Vacant	% Vacant
G0600010409000	1.91	1,128	538	47.65	547	48.54	43	3.81
G0600010408800	5.36	2,180	494	22.66	1,587	72.80	99	4.54
G0600010409100	6.63	709	405	57.12	266	37.52	38	5.36
G0600010409200	11.25	988	454	46.01	481	48.70	52	5.29
G0600010407300	1.25	798	176	22.06	598	74.94	24	3.01
G0600010409500	5.31	1,207	331	27.42	816	67.61	60	4.97
G0600010406000	3.44	1,577	179	11.35	1,286	81.55	112	7.10
G0600010402200	8.86	973	306	31.45	549	56.42	118	12.13
G0600010409400	4.87	1,350	467	34.59	785	58.15	98	7.26
G0600010408900	5.37	1,104	300	27.17	648	58.70	156	14.13
G0600010401800	15.12	768	164	21.35	548	71.35	56	7.29
G0600010406100	3.31	1,626	475	29.21	980	60.27	171	10.52
G0600010401400	6.47	1,722	298	17.31	1,278	74.22	146	8.48
G0600010401700	1.61	1,402	708	50.50	578	41.18	117	8.32
G0600010403000	3.95	1,698	460	27.09	1,003	59.07	235	13.84
G0600010432400	0.33	1	0	43.50	0	52.34	0	4.16
G0600010409300	6.27	1,668	639	38.29	1,008	60.40	22	1.32
G0600010401500	6.74	1,235	377	30.53	703	56.92	155	12.55
G0600010402500	12.21	762	76	9.97	632	82.94	54	7.09
G0600010403300	6.73	2,332	670	28.73	1,471	63.08	191	8.19

Census Tracts	Canopy Cover %	Ownership						
		Total Housing Units	Owned	% Owned	Renter	% Rented	Vacant	% Vacant
G0600010410500	9.85	992	119	12.00	817	82.36	56	5.65
G0600010402400	12.33	1,260	303	24.05	906	71.90	51	4.05
G0600010401000	10.10	2,663	849	31.88	1,590	59.71	224	8.41
G0600010401600	4.19	939	196	20.87	672	71.57	71	7.56
G0600010407200	7.11	2,000	418	20.90	1,477	73.85	105	5.25
G0600010407400	5.09	1,230	404	32.85	748	60.81	78	6.34
G0600010425104	11.73	10	3	29.60	6	61.87	1	8.53
G0600010402700	10.07	782	193	24.68	489	62.53	100	12.79
G0600010405401	8.24	1,792	254	14.17	1,476	82.37	62	3.46
G0600010422000	0.00	0	0	23.46	0	67.73	0	8.81
G0600010406201	6.44	1,559	294	18.86	1,199	76.91	66	4.23
G0600010402800	4.34	2,750	166	6.04	2,441	88.76	143	5.20
G0600010407500	6.51	1,416	291	20.55	1,036	73.16	89	6.29
G0600010401300	8.07	1,894	288	15.21	1,516	80.04	90	4.75
G0600010406202	10.16	1,404	128	9.12	1,198	85.33	78	5.56
G0600010400700	10.89	2,036	770	37.82	1,177	57.81	89	4.37
G0600010402600	14.26	645	78	12.09	540	83.72	27	4.19
G0600010405901	6.22	1,207	331	27.42	758	62.80	118	9.78
G0600010406500	13.11	2,043	619	30.30	1,286	62.95	138	6.75
G0600010400800	9.64	1,746	598	34.25	1,022	58.56	126	7.19
G0600010400900	14.13	1,144	304	26.61	738	64.49	102	8.90
G0600010403100	6.13	697	197	28.26	441	63.27	59	8.46
G0600010405902	9.47	1,007	300	29.79	623	61.87	84	8.34
G0600010405302	6.99	1,572	86	5.47	1,315	83.65	171	10.88
G0600010410100	12.51	1,111	662	59.59	391	35.19	58	5.22
G0600010407102	10.71	1,428	639	44.75	661	46.29	128	8.96
G0600010409600	8.88	1,630	524	32.15	922	56.56	184	11.29
G0600010432502	79.41	0	0	56.08	0	43.92	0	0.00
G0600010432300	10.07	3	2	55.46	1	38.20	0	6.34
G0600010408700	7.63	2,618	948	36.21	1,417	54.13	253	9.66
G0600010424002	3.21	1	1	43.09	1	46.00	0	10.91
G0600010405402	6.86	1,223	122	9.98	1,045	85.45	56	4.58
G0600010405700	11.41	1,466	325	22.17	1,015	69.24	126	8.59
G0600010406400	20.26	774	343	44.32	403	52.07	28	3.62
G0600010407600	12.86	2,322	1,134	48.84	1,066	45.91	122	5.25
G0600010401100	12.17	2,096	495	23.62	1,548	73.85	53	2.53
G0600010403400	9.95	2,977	264	8.87	2,593	87.10	120	4.03
G0600010410300	8.05	1,063	388	36.50	610	57.38	65	6.11
G0600010405500	12.03	1,693	372	21.97	1,185	69.99	136	8.03
G0600010406300	13.39	1,311	450	34.32	789	60.18	72	5.49
G0600010409800	27.35	1,376	704	51.16	604	43.90	68	4.94
G0600010407000	10.13	2,233	812	36.36	1,134	50.78	287	12.85
G0600010407101	11.76	1,082	337	31.15	698	64.51	47	4.34
G0600010408600	6.92	1,964	742	37.78	1,109	56.47	113	5.75
G0600010402900	4.25	947	7	0.74	892	94.19	48	5.07
G0600010410200	8.40	1,199	567	47.29	584	48.71	48	4.00
G0600010406601	12.80	1,829	599	32.75	1,095	59.87	135	7.38
G0600010408500	9.24	1,746	540	30.93	1,033	59.16	173	9.91
G0600010410400	7.45	1,393	792	56.86	571	40.99	30	2.15
G0600010405600	14.37	1,458	418	28.67	991	67.97	49	3.36
G0600010425103	1.04	2	1	37.01	1	54.82	0	8.17
G0600010403501	16.07	2,804	297	10.59	2,426	86.52	81	2.89
G0600010406602	12.36	980	310	31.63	634	64.69	36	3.67
G0600010408300	25.19	1,876	1,179	62.85	610	32.52	87	4.64
G0600010405800	11.48	1,425	443	31.09	908	63.72	74	5.19
G0600010409900	37.38	1,461	1,256	85.97	164	11.23	41	2.81
G0600010405301	10.02	1,648	143	8.68	1,441	87.44	64	3.88
G0600010410000	42.92	1,222	1,081	88.47	137	11.20	4	0.33
G0600010432700	0.00	0	0	67.67	0	26.78	0	5.56
G0600010405200	14.03	2,504	658	26.28	1,769	70.65	77	3.08
G0600010408400	8.99	1,275	428	33.57	741	58.12	106	8.31
G0600010432200	5.05	2	1	40.68	1	54.97	0	4.35
G0600010409700	11.64	1,806	562	31.12	972	53.82	272	15.06

Census Tracts	Canopy Cover %	Ownership						
		Total Housing Units	Owned	% Owned	Renter	% Rented	Vacant	% Vacant
G0600010424001	17.02	0	0	25.52	0	67.30	0	7.18
G0600010403600	16.67	2,704	374	13.83	2,204	81.51	126	4.66
G0600010400500	13.55	1,719	605	35.19	1,017	59.16	97	5.64
G0600010400600	15.36	732	283	38.66	374	51.09	75	10.25
G0600010401200	16.10	1,255	446	35.54	784	62.47	25	1.99
G0600010404900	20.50	1,992	1,095	54.97	779	39.11	118	5.92
G0600010432100	7.49	3	2	72.58	1	26.11	0	1.31
G0600010403900	19.88	2,227	739	33.18	1,404	63.04	84	3.77
G0600010404800	30.11	1,267	574	45.30	629	49.64	64	5.05
G0600010432800	94.15	1	0	80.11	0	12.24	0	7.65
G0600010408200	23.93	1,932	714	36.96	1,141	59.06	77	3.99
G0600010406900	22.19	1,590	836	52.58	702	44.15	52	3.27
G0600010403502	18.32	1,296	253	19.52	899	69.37	144	11.11
G0600010406700	30.13	2,356	1,405	59.63	768	32.60	183	7.77
G0600010407800	35.46	813	508	62.48	249	30.63	56	6.89
G0600010423901	18.97	4	1	36.01	2	56.51	0	7.48
G0600010422700	44.44	0	0	11.78	0	80.22	0	8.00
G0600010423902	42.92	2	1	34.15	1	59.41	0	6.44
G0600010406800	23.67	1,450	971	66.97	380	26.21	99	6.83
G0600010407700	11.03	1,866	1,234	66.13	457	24.49	175	9.38
G0600010407900	28.95	1,215	861	70.86	275	22.63	79	6.50
G0600010403702	14.18	1,226	227	18.52	864	70.47	135	11.01
G0600010400300	17.70	2,626	1,057	40.25	1,384	52.70	185	7.04
G0600010408100	43.87	2,893	2,215	76.56	482	16.66	196	6.77
G0600010403800	13.83	1,939	553	28.51	1,272	65.62	114	5.88
G0600010404102	20.20	1,618	260	16.07	1,331	82.26	27	1.67
G0600010400400	26.53	1,874	653	34.83	1,096	58.51	125	6.67
G0600010423700	31.82	0	0	37.06	0	55.97	0	6.97
G0600010428301	3.39	0	0	78.20	0	19.87	0	1.94
G0600010405000	29.13	1,623	1,045	64.39	412	25.39	166	10.23
G0600130354001	47.37	5	4	83.88	1	11.42	0	4.70
G0600010403701	14.62	1,835	229	12.48	1,538	83.81	68	3.71
G0600010404101	14.55	1,795	583	32.48	1,127	62.79	85	4.74
G0600010404700	49.02	813	680	83.64	110	13.53	23	2.83
G0600010404000	17.99	1,764	500	28.34	1,191	67.52	73	4.14
G0600010430400	37.21	0	0	89.78	0	5.64	0	4.59
G0600010405100	31.20	1,621	1,471	90.75	131	8.08	19	1.17
G0600010408000	39.30	1,052	895	85.08	115	10.93	42	3.99
G0600010404200	25.24	1,381	1,050	76.03	278	20.13	53	3.84
G0600010404400	47.42	2,351	2,031	86.41	287	12.19	33	1.40
G0600010426200	28.75	6	5	81.37	1	15.70	0	2.94
G0600010404300	28.77	1,337	1,106	82.72	177	13.24	54	4.04
G0600010400100	51.09	1,356	1,153	85.02	138	10.21	65	4.77
G0600010404501	44.32	694	605	87.18	74	10.66	15	2.16
G0600010404502	52.39	2,502	2,160	86.34	322	12.86	20	0.80
G0600010423800	43.88	3	2	74.27	1	25.04	0	0.69
G0600010430102	52.16	0	0	80.79	0	16.78	0	2.43
G0600010426100	17.28	1	1	92.15	0	7.27	0	0.58
G0600130352202	53.36	4	3	79.87	1	20.13	0	0.00
G0600130353001	49.13	5	4	82.77	0	8.21	0	9.02
G0600010400200	28.31	863	532	61.65	323	37.43	8	0.93
G0600010404600	68.39	1,831	1,667	91.05	115	6.27	49	2.67
G0600010421600	80.00	0	0	70.69	0	21.45	0	7.85
G0600010422600	66.20	0	0	61.76	0	0.00	0	38.24
G0600010981900	0.36	31	0	0.00	31	100.00	0	0.00
G0600010982000	1.08	32	32	100.00	0	0.00	0	0.00
G0600010983200	6.21	370	308	83.24	41	11.08	21	5.68

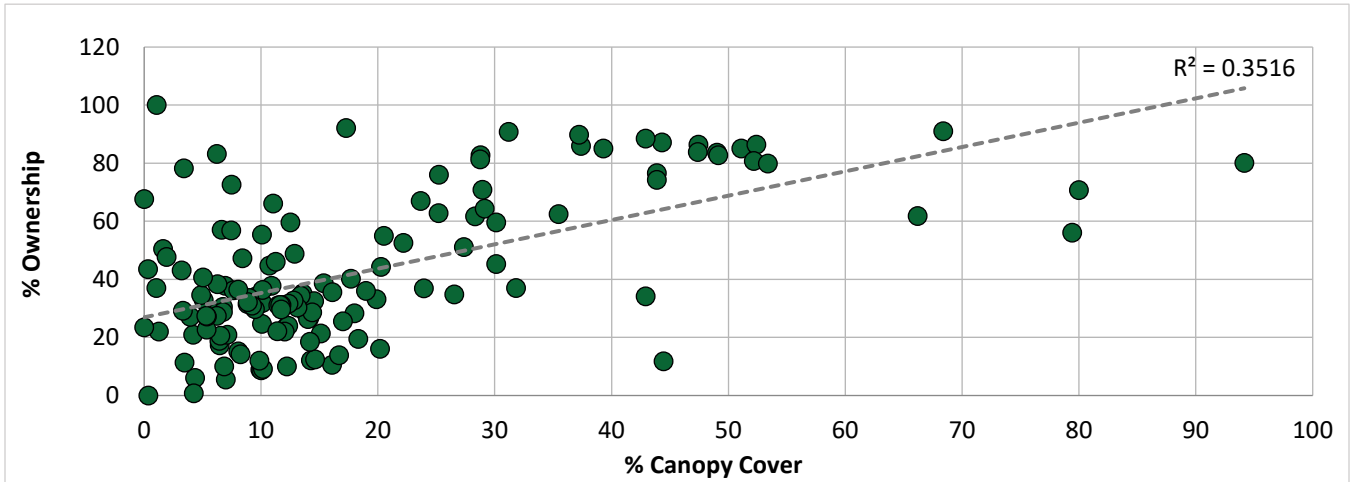


Figure 13: Ownership and Canopy Cover by Census Tracts

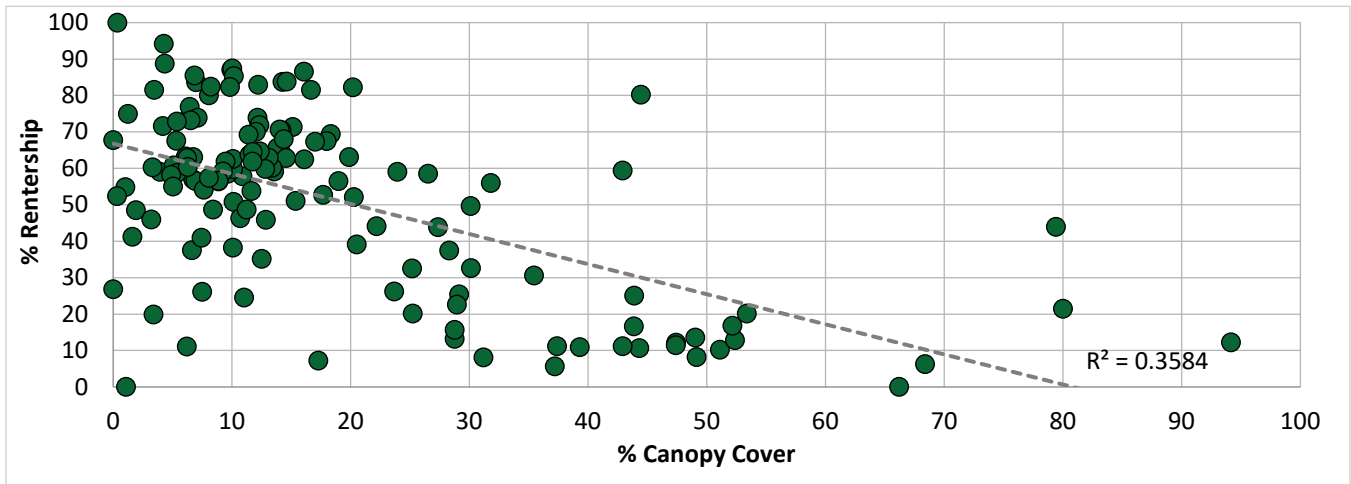


Figure 14: Rentership and Canopy Cover by Census Tracts

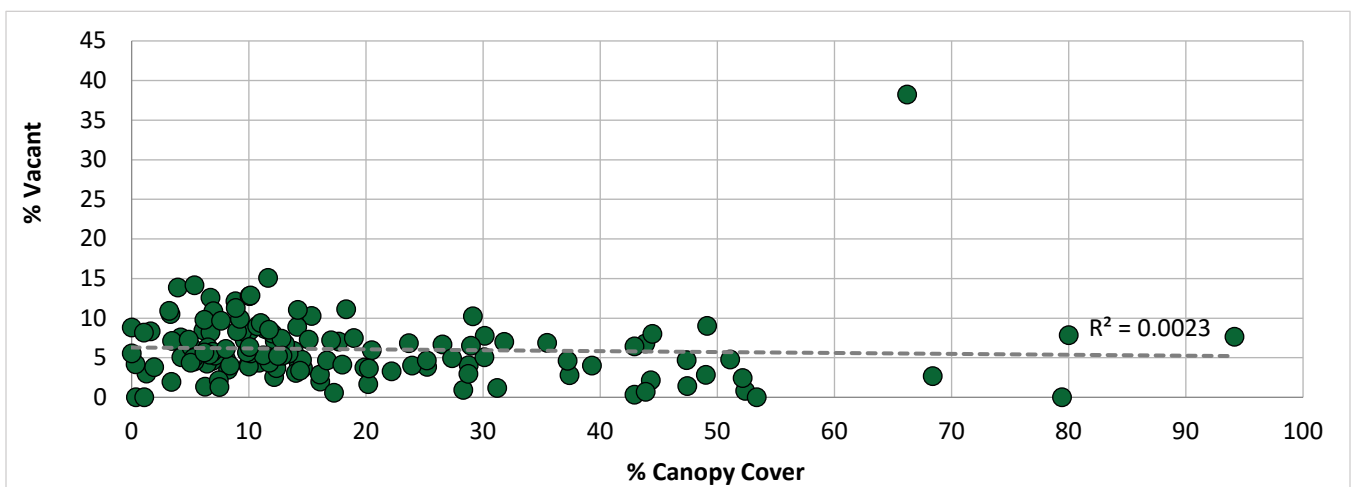


Figure 15: Vacant Properties and Canopy Cover by Census Tracts

Table 15: Educational Attainment by Census Tracts

Census Tracts	Canopy Cover %	% Educational Attainment for Persons 25+				
		Non-Graduate	High School	Associates	Bachelors	Advanced
G0600010400100	51.09	2.44	10.51	5.13	32.14	49.78
G0600010400200	28.31	0.82	10.96	1.08	36.67	50.47
G0600010400300	17.70	5.18	21.07	5.10	31.77	36.88
G0600010400400	26.53	5.57	15.50	1.80	33.00	44.13
G0600010400500	13.55	1.69	26.18	4.01	35.44	32.68
G0600010400600	15.36	2.75	16.51	7.59	39.45	33.69
G0600010400700	10.89	8.66	35.69	6.15	34.11	15.38
G0600010400800	9.64	6.36	29.85	10.15	32.31	21.33
G0600010400900	14.13	8.38	41.57	5.48	30.13	14.45
G0600010401000	10.10	14.66	41.06	7.40	21.20	15.68
G0600010401100	12.17	3.92	24.51	2.56	40.83	28.18
G0600010401200	16.10	4.48	15.38	7.74	41.59	30.82
G0600010401300	8.07	14.47	34.38	5.24	28.61	17.30
G0600010401400	6.47	15.46	40.99	9.05	23.24	11.26
G0600010401500	6.74	11.95	42.35	9.23	27.91	8.56
G0600010401600	4.19	11.18	32.30	10.65	29.26	16.62
G0600010401700	1.61	5.89	35.66	8.26	35.31	14.88
G0600010401800	15.12	10.86	41.09	8.67	26.74	12.64
G0600010402200	8.86	15.39	34.81	8.69	26.69	14.42
G0600010402400	12.33	13.61	37.75	7.71	25.23	15.70
G0600010402500	12.21	14.07	48.13	14.07	19.43	4.31
G0600010402600	14.26	23.28	41.40	7.49	20.24	7.59
G0600010402700	10.07	12.04	33.04	7.64	33.26	14.02
G0600010402800	4.34	16.03	26.78	7.01	29.26	20.92
G0600010402900	4.25	20.24	26.53	8.76	28.05	16.41
G0600010403000	3.95	40.45	30.11	3.53	17.23	8.68
G0600010403100	6.13	25.65	32.44	1.88	20.45	19.58
G0600010403300	6.73	22.59	24.85	4.86	31.66	16.04
G0600010403400	9.95	8.97	20.38	5.77	34.61	30.27
G0600010403501	16.07	11.13	27.64	7.38	37.33	16.51
G0600010403502	18.32	6.48	25.65	3.77	38.34	25.76
G0600010403600	16.67	6.84	30.74	4.22	32.50	25.70
G0600010403701	14.62	4.63	24.95	3.58	39.18	27.66
G0600010403702	14.18	5.28	20.77	5.68	33.73	34.54
G0600010403800	13.83	2.12	15.67	3.39	40.54	38.29
G0600010403900	19.88	5.18	18.34	7.46	37.06	31.97
G0600010404000	17.99	1.92	17.46	7.73	40.46	32.42
G0600010404101	14.55	1.29	17.82	3.28	37.56	40.05
G0600010404102	20.20	6.62	22.01	4.53	32.54	34.30
G0600010404200	25.24	2.55	12.88	6.36	41.58	36.63
G0600010404300	28.77	1.14	10.93	3.37	33.82	50.74
G0600010404400	47.42	1.83	12.83	6.66	41.53	37.15
G0600010404501	44.32	2.84	11.20	2.68	36.35	46.93
G0600010404502	52.39	0.78	17.58	5.93	43.18	32.53
G0600010404600	68.39	0.93	20.52	4.53	35.02	39.00
G0600010404700	49.02	1.94	15.59	2.85	40.75	38.87
G0600010404800	30.11	5.71	21.02	7.88	40.58	24.81
G0600010404900	20.50	4.43	25.22	6.75	31.58	32.03
G0600010405000	29.13	3.68	15.51	4.14	37.99	38.68
G0600010405100	31.20	0.92	12.07	2.82	37.99	46.20

Census Tracts	Canopy Cover %	% Educational Attainment for Persons 25+				
		Non-Graduate	High School	Associates	Bachelors	Advanced
G0600010405200	14.03	7.30	27.69	5.46	32.60	26.95
G0600010405301	10.02	6.84	24.25	4.41	38.37	26.12
G0600010405302	6.99	22.45	29.42	4.50	28.90	14.73
G0600010405401	8.24	23.07	37.12	8.99	23.17	7.65
G0600010405402	6.86	23.02	44.49	8.01	18.73	5.75
G0600010405500	12.03	17.67	29.82	5.97	28.16	18.39
G0600010405600	14.37	14.37	25.96	5.93	38.73	15.01
G0600010405700	11.41	24.73	39.38	10.27	16.12	9.50
G0600010405800	11.48	32.64	38.66	8.98	12.30	7.42
G0600010405901	6.22	44.99	44.29	4.26	4.68	1.78
G0600010405902	9.47	42.96	33.10	3.61	15.57	4.76
G0600010406000	3.44	31.31	31.99	8.31	20.05	8.35
G0600010406100	3.31	36.78	31.21	2.59	21.71	7.71
G0600010406201	6.44	39.28	39.50	4.52	11.82	4.88
G0600010406202	10.16	34.35	38.75	3.95	19.29	3.66
G0600010406300	13.39	29.12	46.51	9.83	10.33	4.21
G0600010406400	20.26	14.00	47.62	4.38	19.35	14.65
G0600010406500	13.11	31.15	45.75	4.06	10.42	8.63
G0600010406601	12.80	24.81	45.02	6.02	15.85	8.30
G0600010406602	12.36	23.05	41.33	6.18	22.00	7.44
G0600010406700	30.13	11.78	25.25	5.57	32.48	24.92
G0600010406800	23.67	11.87	26.16	5.42	28.10	28.45
G0600010406900	22.19	6.21	34.91	6.67	27.88	24.33
G0600010407000	10.13	28.26	48.07	5.02	6.52	12.12
G0600010407101	11.76	36.99	40.89	3.11	13.64	5.37
G0600010407102	10.71	31.15	37.05	8.08	13.94	9.77
G0600010407200	7.11	46.57	33.40	3.11	12.47	4.45
G0600010407300	1.25	38.64	39.63	2.26	14.14	5.33
G0600010407400	5.09	40.29	41.09	6.39	8.18	4.05
G0600010407500	6.51	46.70	33.52	11.14	6.30	2.34
G0600010407600	12.86	26.40	33.09	11.10	21.45	7.96
G0600010407700	11.03	6.91	38.38	9.81	24.31	20.59
G0600010407800	35.46	10.72	41.40	3.67	26.09	18.12
G0600010407900	28.95	7.92	26.07	6.42	30.63	28.95
G0600010408000	39.30	5.99	22.40	5.99	28.28	37.34
G0600010408100	43.87	5.35	28.34	3.36	31.76	31.18
G0600010408200	23.93	10.53	44.89	9.35	23.17	12.05
G0600010408300	25.19	14.09	41.48	3.86	22.97	17.60
G0600010408400	8.99	20.58	56.89	5.96	8.96	7.61
G0600010408500	9.24	39.10	44.96	4.65	8.44	2.84
G0600010408600	6.92	39.88	41.08	3.53	10.41	5.09
G0600010408700	7.63	29.31	47.80	5.67	8.88	8.35
G0600010408800	5.36	44.55	50.38	3.62	1.14	0.30
G0600010408900	5.37	37.04	47.58	6.85	6.22	2.32
G0600010409000	1.91	32.83	49.29	8.77	7.60	1.51
G0600010409100	6.63	31.80	50.42	7.18	7.81	2.79
G0600010409200	11.25	40.19	47.18	4.40	7.04	1.20
G0600010409300	6.27	37.18	47.36	4.40	9.02	2.04
G0600010409400	4.87	41.11	46.12	4.21	5.02	3.54
G0600010409500	5.31	43.05	44.87	4.85	6.10	1.13
G0600010409600	8.88	48.44	41.50	2.07	5.09	2.90
G0600010409700	11.64	34.62	50.56	3.69	8.87	2.26

Census Tracts	Canopy Cover %	% Educational Attainment for Persons 25+				
		Non-Graduate	High School	Associates	Bachelors	Advanced
G0600010409800	27.35	14.95	42.87	12.13	15.03	15.03
G0600010409900	37.38	5.59	32.37	5.45	26.10	30.49
G0600010410000	42.92	6.04	37.31	6.15	25.35	25.16
G0600010410100	12.51	9.63	54.44	8.43	19.27	8.23
G0600010410200	8.40	18.80	59.97	6.91	11.01	3.30
G0600010410300	8.05	41.03	46.94	2.41	7.59	2.03
G0600010410400	7.45	24.97	45.59	9.41	14.34	5.70
G0600010410500	9.85	16.12	51.93	8.88	15.84	7.23
G0600010421600	80.00	0.49	8.88	1.50	33.14	56.00
G0600010422000	0.00	8.16	21.94	4.59	35.40	29.91
G0600010422600	66.20	0.00	3.44	0.00	63.23	33.33
G0600010422700	44.44	0.91	22.83	4.29	42.28	29.68
G0600010423700	31.82	0.00	10.95	1.70	35.06	52.29
G0600010423800	43.88	0.40	8.56	2.10	30.20	58.74
G0600010423901	18.97	1.14	23.20	7.53	38.13	29.99
G0600010423902	42.92	1.14	15.68	2.21	38.28	42.69
G0600010424001	17.02	9.67	29.93	6.87	31.57	21.97
G0600010424002	3.21	5.99	39.69	7.48	26.88	19.96
G0600010425103	1.04	2.96	15.19	4.80	47.62	29.43
G0600010425104	11.73	4.73	32.15	7.15	33.45	22.52
G0600010426100	17.28	0.00	9.37	7.74	34.93	47.95
G0600010426200	28.75	1.88	12.60	2.50	36.27	46.75
G0600010428301	3.39	6.29	35.56	6.95	31.61	19.58
G0600010430102	52.16	3.49	36.48	7.46	29.56	23.02
G0600010430400	37.21	7.10	40.82	7.77	27.23	17.07
G0600010432100	7.49	6.68	38.21	6.28	33.20	15.64
G0600010432200	5.05	8.75	43.38	8.69	22.12	17.07
G0600010432300	10.07	19.50	38.26	6.14	24.72	11.39
G0600010432400	0.33	22.59	49.87	8.85	12.95	5.74
G0600010432502	79.41	25.12	45.39	5.21	20.24	4.05
G0600010432700	0.00	8.95	46.49	6.35	20.26	17.95
G0600010432800	94.15	9.36	39.77	6.71	23.42	20.73
G0600010981900	0.36	0.00	23.33	0.00	48.33	28.33
G0600010982000	1.08	32.65	14.29	0.00	44.90	8.16
G0600010983200	6.21	5.64	17.26	2.91	38.12	36.07
G0600130352202	53.36	2.47	14.68	4.41	40.79	37.65
G0600130353001	49.13	0.82	12.14	4.30	43.09	39.65
G0600130354001	47.37	2.50	13.88	4.21	33.36	46.05

References

500 Cities Project Data. Center of Disease Control. <https://www.cdc.gov/places/about/500-cities-2016-2019/index.html>

CalEnviroScreen Data. 2020. <https://oehha.ca.gov/calenviroscreen>

City of Oakland Flooding and Tree Related Service Requests. Retrieved December 1, 2020.

City of Oakland Tree Lawsuits. Retrieved June 11, 2021.

City of Oakland TreeKeeper Inventory Data. Retrieved April 12, 2021.

i-Tree Eco v6.1.23. i-Tree Software Suite. <http://www.itreetools.org/i-tree-eco>

Oakland Resource Analysis. 2021.

Oakland Urban Tree Canopy Assessment. 2020.

Oakland, CA Urban Forest Council District Summary. 2021

US Census Bureau Data.