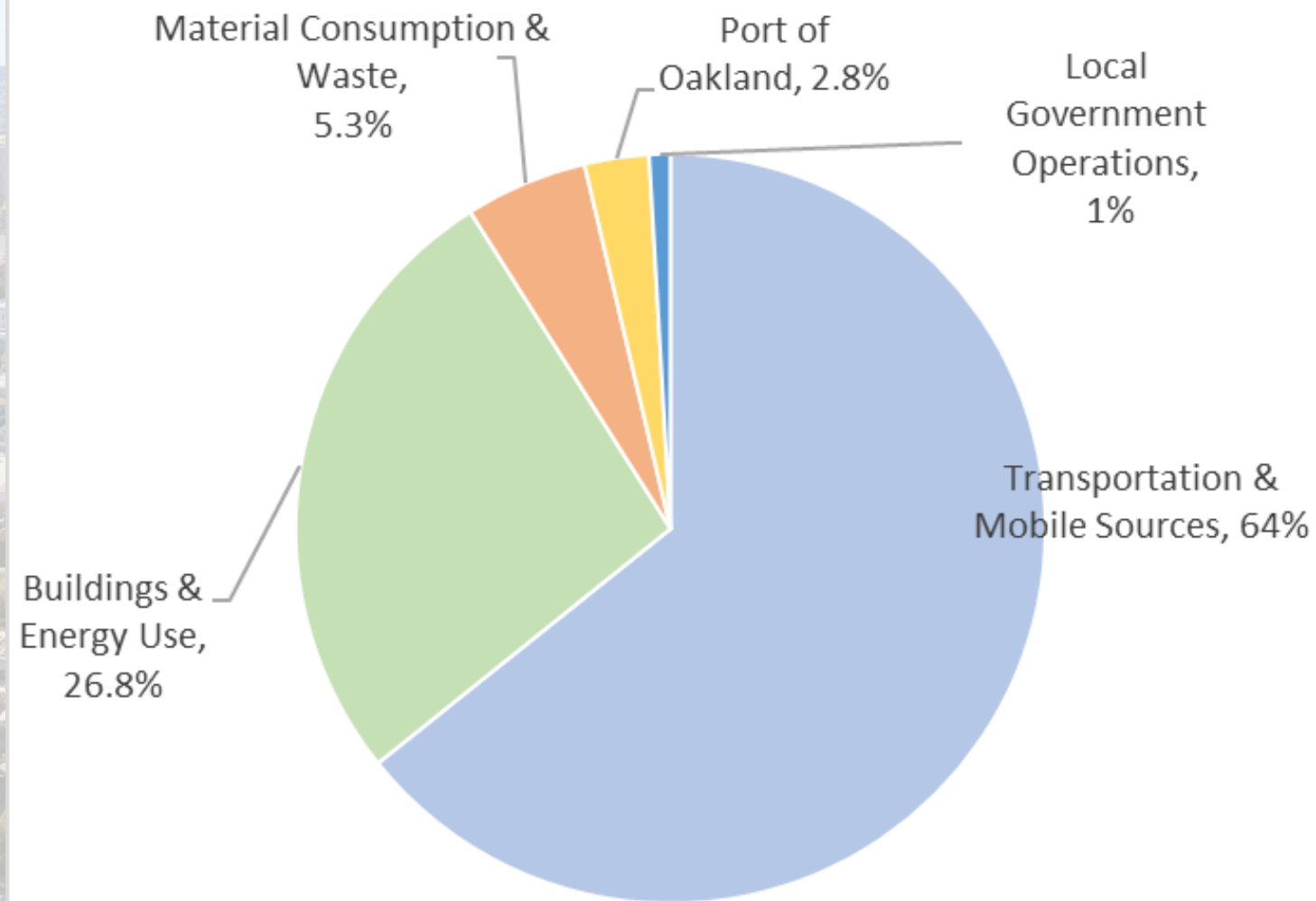


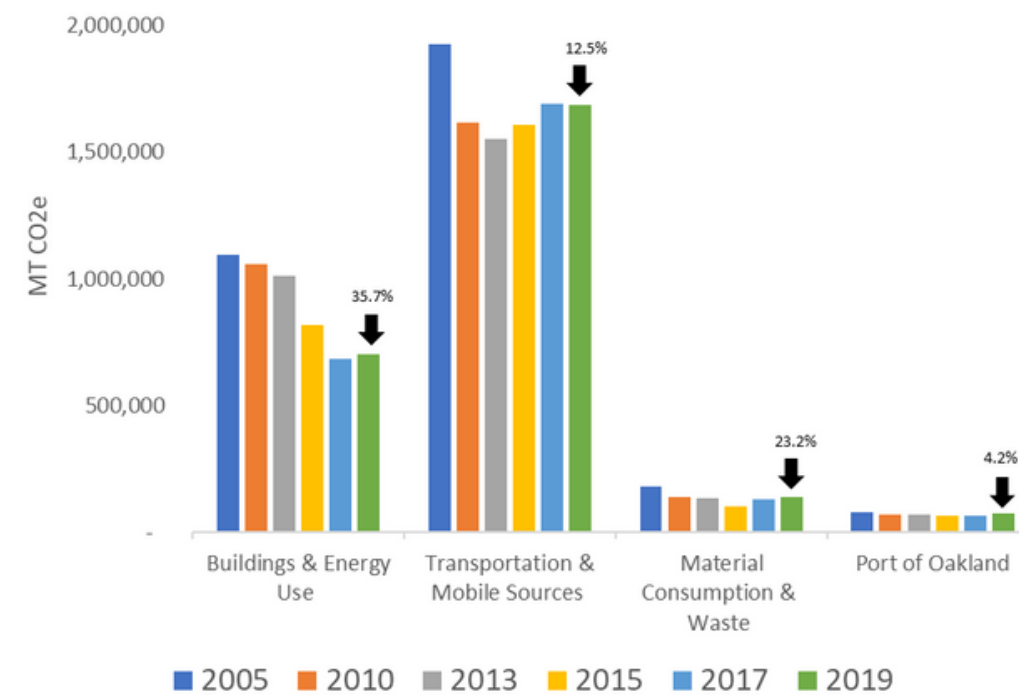
# Oakland 2019 Greenhouse Gas Inventory

2019 Local Emissions



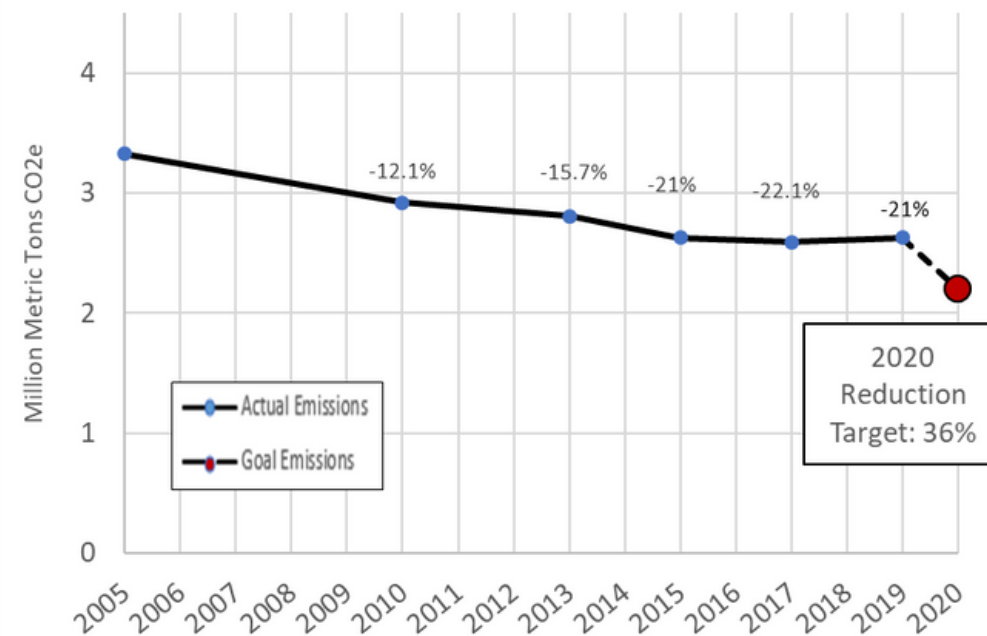
In 2019, the City of Oakland was responsible for 2,627,604 metric tons of carbon dioxide equivalent (MT CO<sub>2</sub>e) emitted within city limits. The majority of emissions (64%) comes from the Transportation sector with Buildings and Energy Use as the second largest emitting sector (27%). Less than 10% of direct emissions comes from the remaining sectors of Material Waste and Consumption, the Port of Oakland, and Local Government Operations.

Local Emissions by Sector



By sector, 2019 emissions in Buildings and Energy Use, Material Consumption and Waste, and the Port of Oakland were slightly higher compared to 2017 levels whereas Transportation saw a small decrease. However, net reductions in emissions across all sectors from the 2005 baseline remain similar in scale between 2017 and 2019.

Local Emissions Progress Toward GHG Reduction Targets



Overall 2019 emissions declined by 21% relative to the 2005 baseline. Compared to 2017, a large increase in commercial electricity use and methodology changes for truck and equipment emissions at the Port of Oakland resulted in higher emissions in 2019. As a result, Oakland is not on track to meet its 2020 greenhouse gas reduction target of 36% below 2005 levels.