



**YOUR RECYCLING TEAM**  
WASTE MANAGEMENT  
CALIFORNIA WASTE SOLUTIONS

Second Quarter, 2021  
Commercial Edition



## NOTICE: State and Local Laws Require Your Business to Recycle and Compost.

**Every Oakland business and institution must separate recyclable and compostable material by January 1, 2022 per State law SB 1383. Current State law AB 341 requires most businesses to recycle and current State law AB 1826 requires businesses that throw out 2 total yards of waste weekly (garbage + recycling) to have organics collection.**

Additionally, the Alameda County Mandatory Composting and Recycling Law requires businesses to sort their waste into the proper containers.

**ORGANICS:** Food scraps, compostable paper, and plant debris ONLY. No garbage or recycling. Refer to reverse side for more information.



**RECYCLING:** Bottles, cans, paper, and cardboard. No garbage or organics. Refer to your recycling provider for details.



**GARBAGE:** Garbage ONLY. No organics or recycling.

**Enforcement:** Inspectors look in the outside garbage, recycling and organics containers to see if waste is being sorted right. **Citations and fines are being issued for failure to comply with the requirements outlined above.**

For more information about the composting and recycling law for Alameda County businesses, visit [www.RecyclingRulesAC.org](http://www.RecyclingRulesAC.org). To access free support including on-site assistance and trainings, how-to videos, stickers, posters, and more please visit [www.RecyclingRulesAC.org/resources](http://www.RecyclingRulesAC.org/resources).

For more information about the State composting and recycling laws visit: [www.CalRecycle.ca.gov/recycle/commercial/organics](http://www.CalRecycle.ca.gov/recycle/commercial/organics) and [www.CalRecycle.ca.gov/recycle/commercial](http://www.CalRecycle.ca.gov/recycle/commercial).

### Don't have Recycling or Compost service yet? Sign-up now!

Contact Waste Management at (510) 613-8700 or [csnorthbay@wm.com](mailto:csnorthbay@wm.com) to order compost collection.

Visit [www.oaklandrecycles.com/businesses](http://www.oaklandrecycles.com/businesses) for a list of approved Recycling service providers.

### Need help but want to be covid-safe?

Contact us for FREE virtual training and assistance on sustainable waste planning.

Representatives can help you:

- Right size your service levels.
- Become compliant with state and local waste diversion laws.
- Improve and increase employee compost and recycling participation.

Call 510.613.2102 or email [oaklandoutreach@wm.com](mailto:oaklandoutreach@wm.com)



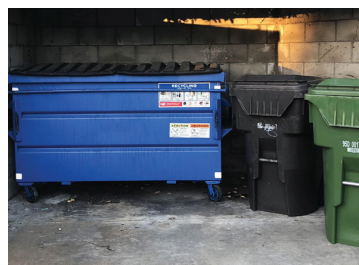
# Step by Step: Setting up Recycling and/or Organics Collection Service



## STEP 1: Check your trash

Look in your trash bin(s) the day before your pickup day to see how much of your trash should be composted and recycled. In food service, up to 80% of discards may be compostable.

**Tip:** Go to [www.OaklandRecycles/Business](http://www.OaklandRecycles/Business) to see what's compostable in Oakland. Check with your recycling provider for what is acceptable in recycling.



## STEP 2: Estimate service(s) adjustment

For example, if you currently have 2 yards of weekly trash service and think at least 20% is food scraps or plant debris, you may increase your compost service and reduce your trash service with proper sorting.

**Tip:** With proper sorting, you could reduce overfilling your trash container.



## STEP 3: Order service changes

Call Waste Management to start or adjust service levels, and possibly reduce trash service. Contact your recycling provider for changes to recycling services.

**Tip:** Tight on space for new bins? Consider ordering smaller bins picked up more times each week.



## STEP 4: Match your indoor bins & train staff

To help with proper separation of materials, you'll need to match your outdoor bins or carts with corresponding indoor bins and train your staff.

**Tip:** Get up to \$500 of free indoor green bins for organics, and find additional tools such as training videos, signs, and stickers to label bins at <http://www.recyclingrulesac.org/businesses-and-institutions-support-materials/>.

## Acceptable Materials in your Compost Container



### • Plant Debris

- Yard & Landscaping debris
- Unpainted, untreated wood\*

### • Food Scraps

- Fruit & vegetables
- Grains, Bread
- Fish, Meat, Bones
- Dairy Products
- Small amounts of cooking fats, oil or kitchen grease

### • Food-soiled paper

- Paper towels, Napkins, Tissues
- Paper cups & plates
- Waxed paper & cardboard

### • Other Compostable Items

- BPI certified plastic
- BPI certified foodware

**Contact Waste Management to order compost collection.**

**(510) 613-8700**

**[csnorthbay@wm.com](mailto:csnorthbay@wm.com)**

**\*Effective January 1, 2021, all Treated Wood Waste (TWW) is required to be managed, stored, and transported as hazardous waste per California State regulations.**

For more information visit: [dtsc.ca.gov/toxics-in-products/treated-wood-waste/](http://dtsc.ca.gov/toxics-in-products/treated-wood-waste/)

Treated Wood Waste (TWW) comes from wood treated with chemical preservatives, often identified by green or dark brown coloring and staple marks. For a list of Hazardous Waste transporters, visit: <https://hwts.dtsc.ca.gov/transporters/>