

# NETUS-P

## Quick Setup Guide

LIVE / PLAYBACK / BACKUP / SYSTEM / E-MAP

Ver.1.1 / 2018.11



## Contents

1. Run Netus.....	3
2. Device Registration.....	4
3. Live.....	7
4. Add Tap Menu.....	9
5. Split Screen.....	12
6. Favorite.....	13
7. Playback.....	15
8. Back Up.....	19
9. System Status.....	20
10. E-MAP.....	21

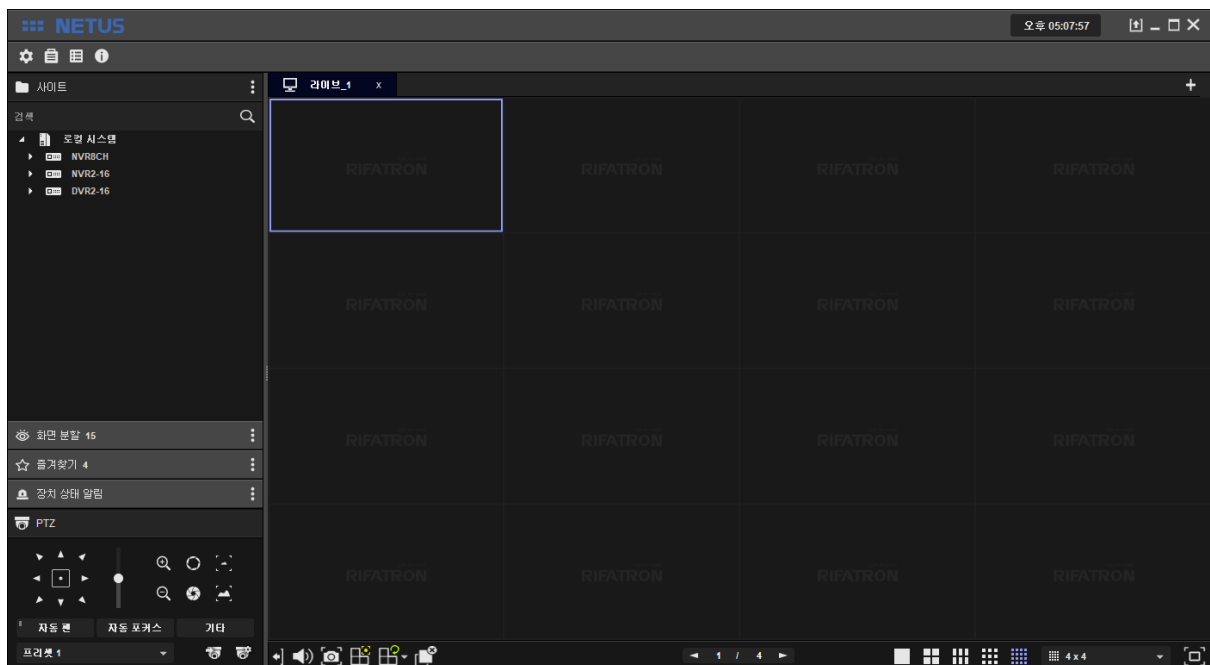
## 1. Run NETUS

Input ID / Password.



Default ID/PW: admin/1111111

Run NETUS as shown below.

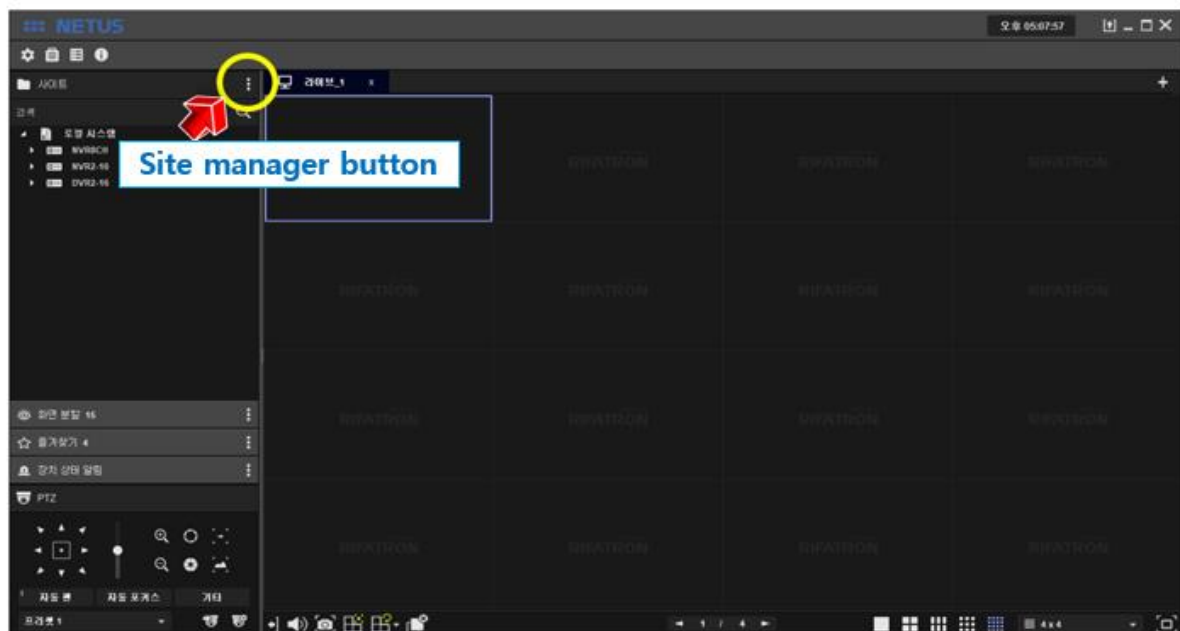


Each menu command of NETUS are shown as below.

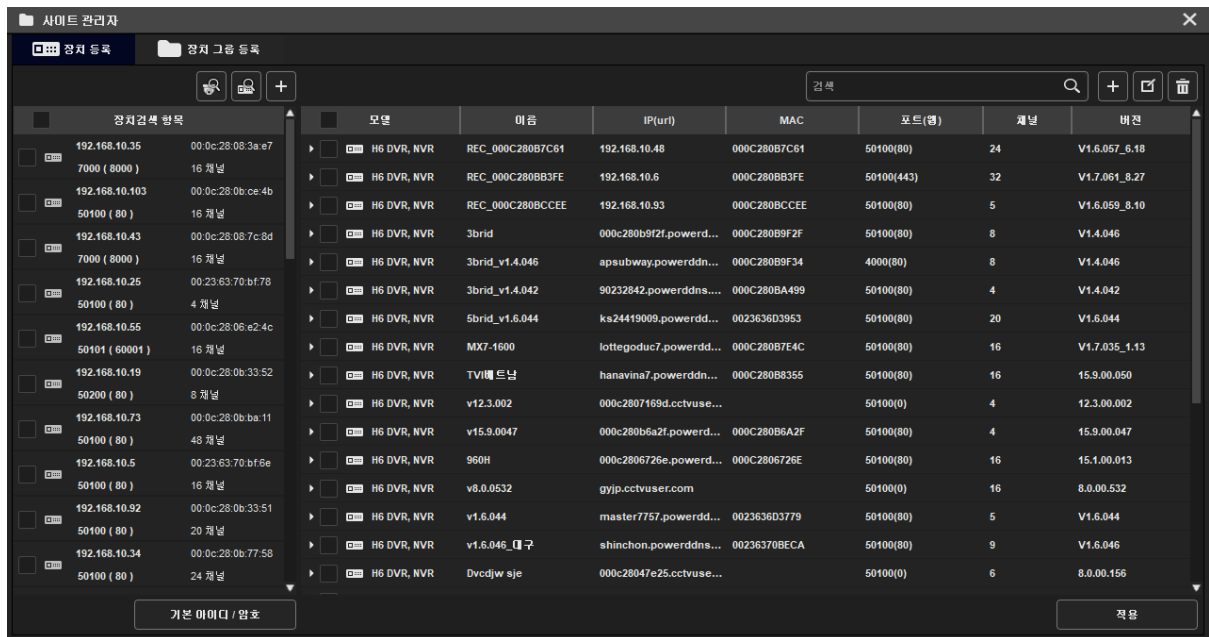




## 2. Device Registration

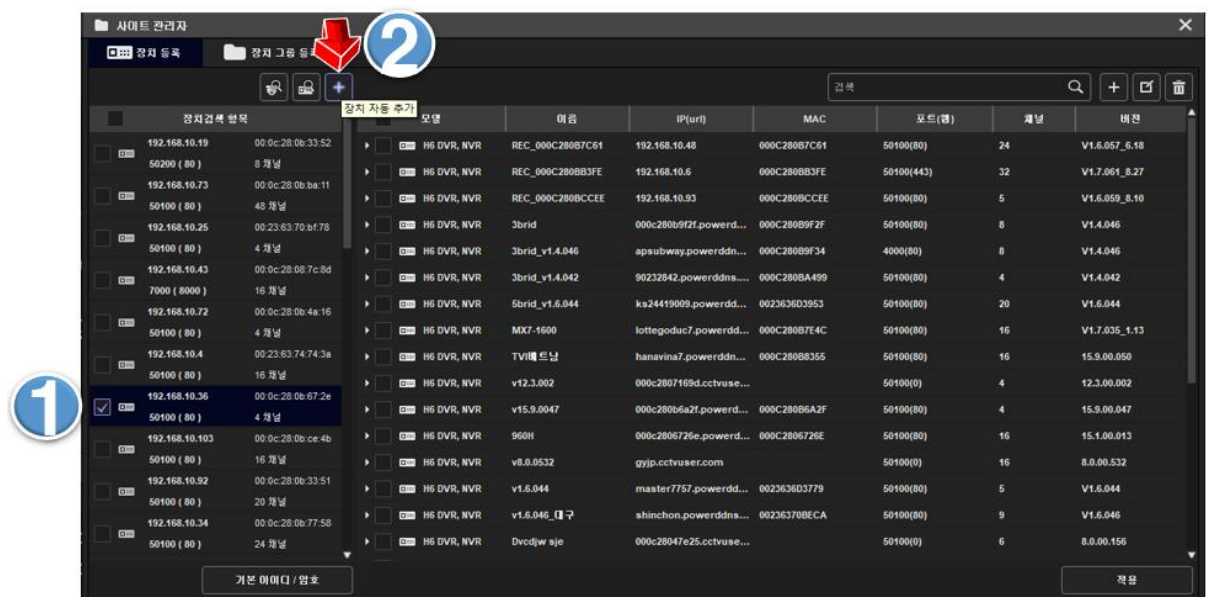
Click the yellow marked button to register the device.



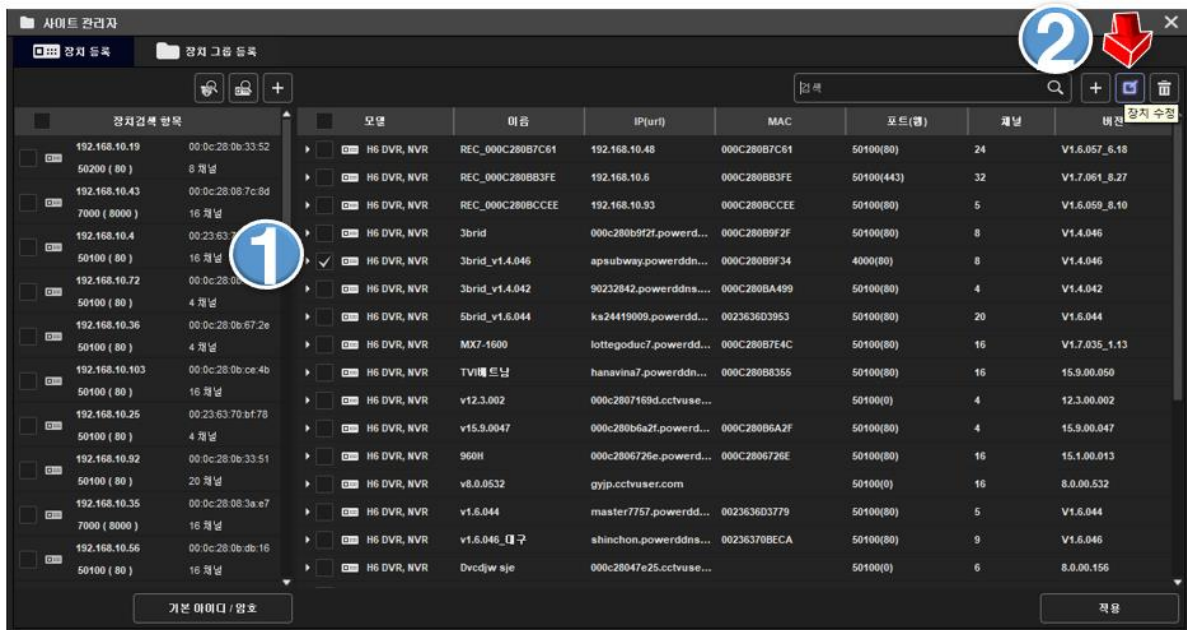
When [Site Manager] window pops-up, RIFATRON DVR/NVR which is in the same band with PC is automatically searched and displayed in Search list on the left.



Please select device at  below to register device to NETUS and Press  button, then selected device is supposed to be registered to right side tab.



To change ID, Password and settings of registered device, Check the device and click 'modify devices button' in the upper right as shown below.



Then popped-up as below.

MODIFY DEVICES

Device type

DVR(NVR)

Model type

H6 series

Device name

REC\_000C280BACA4

IP(url)

192.168.10.72

Client port

50100

Web server port

80

User id

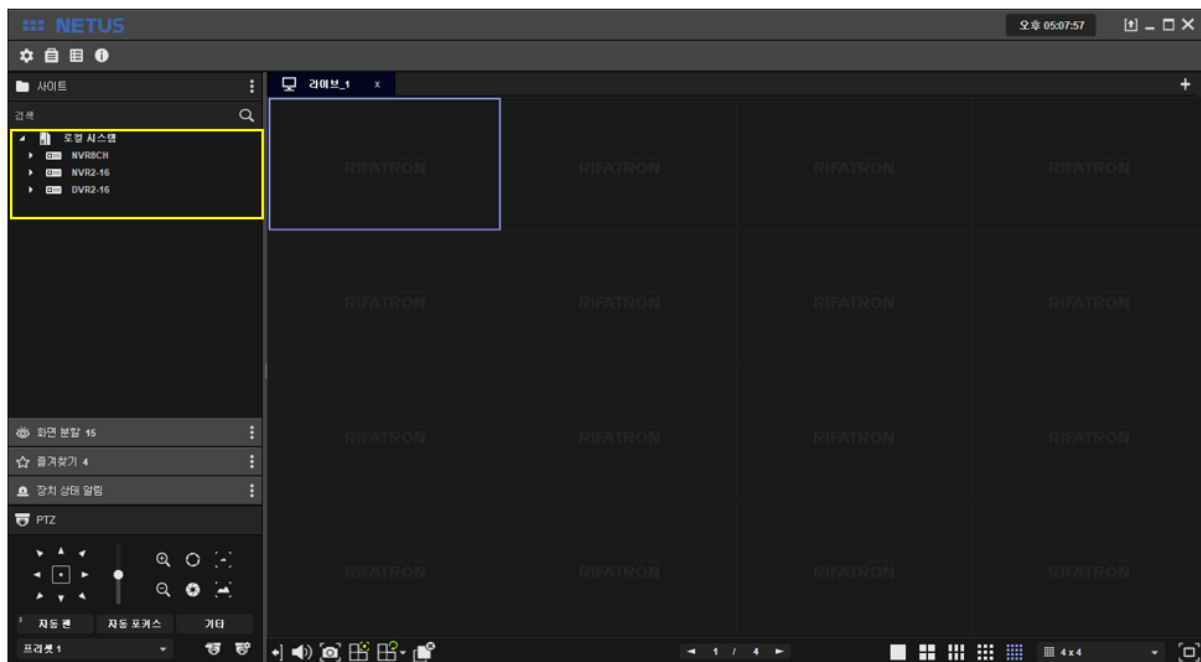
admin

User password

.....

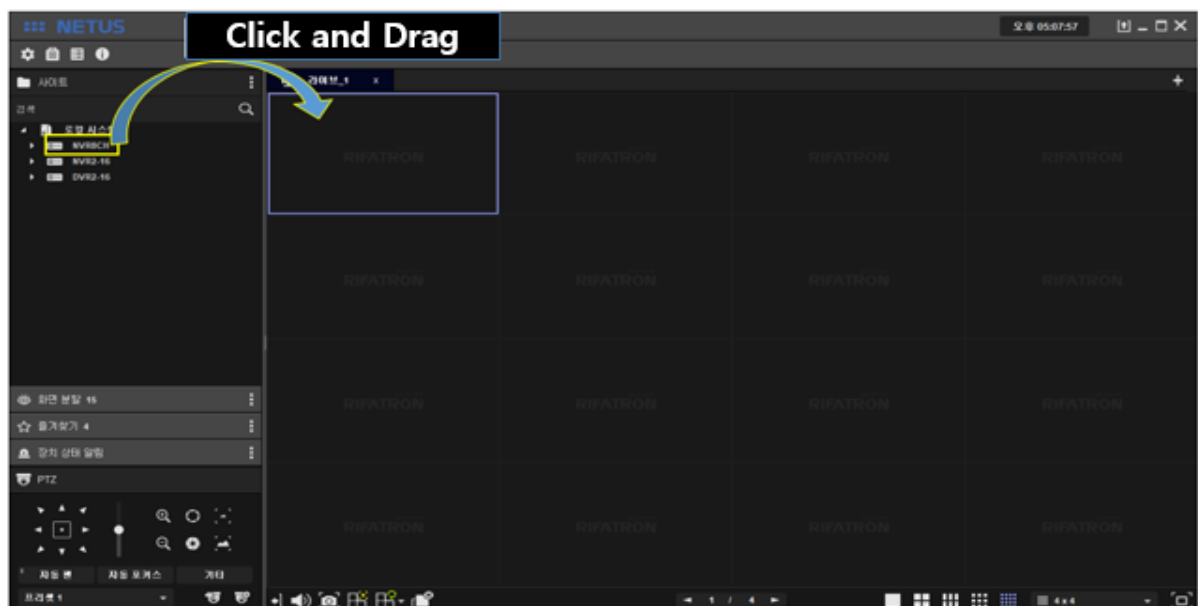
Apply

Registration of device is successful.

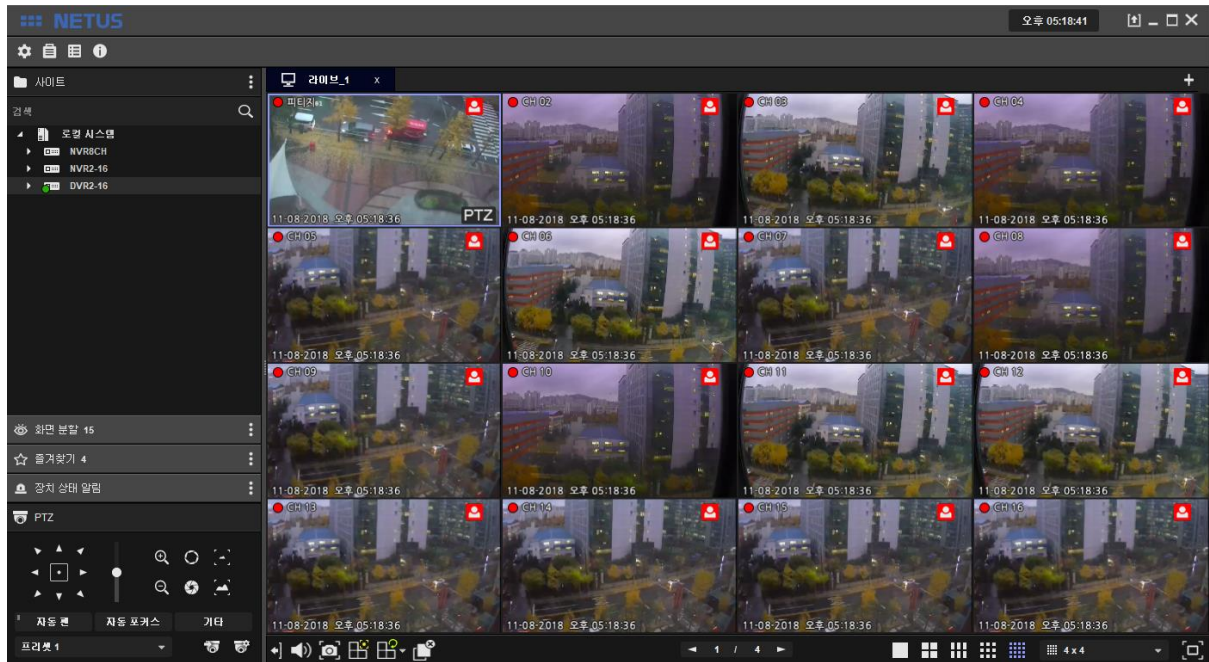



### 3. Live

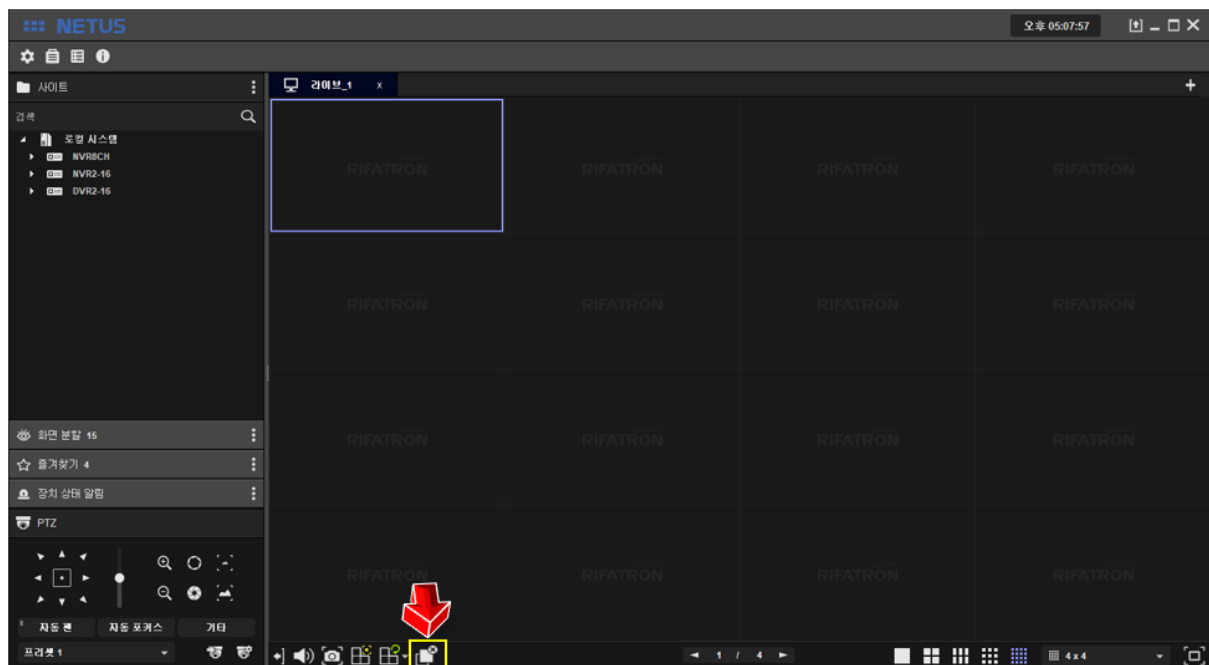
Drag and drop the mouse pointer to the display area to see all channels. Or, you can add one by one by dragging each camera.



Live images are shown as below.




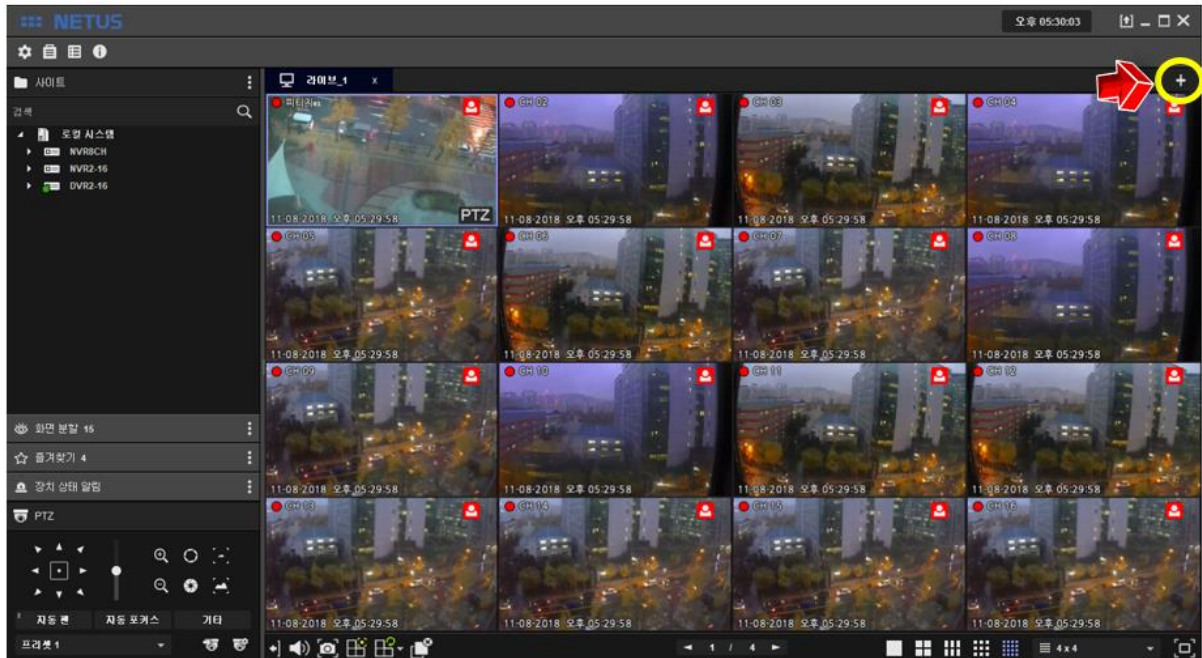
You can stop the display by pressing  button below.




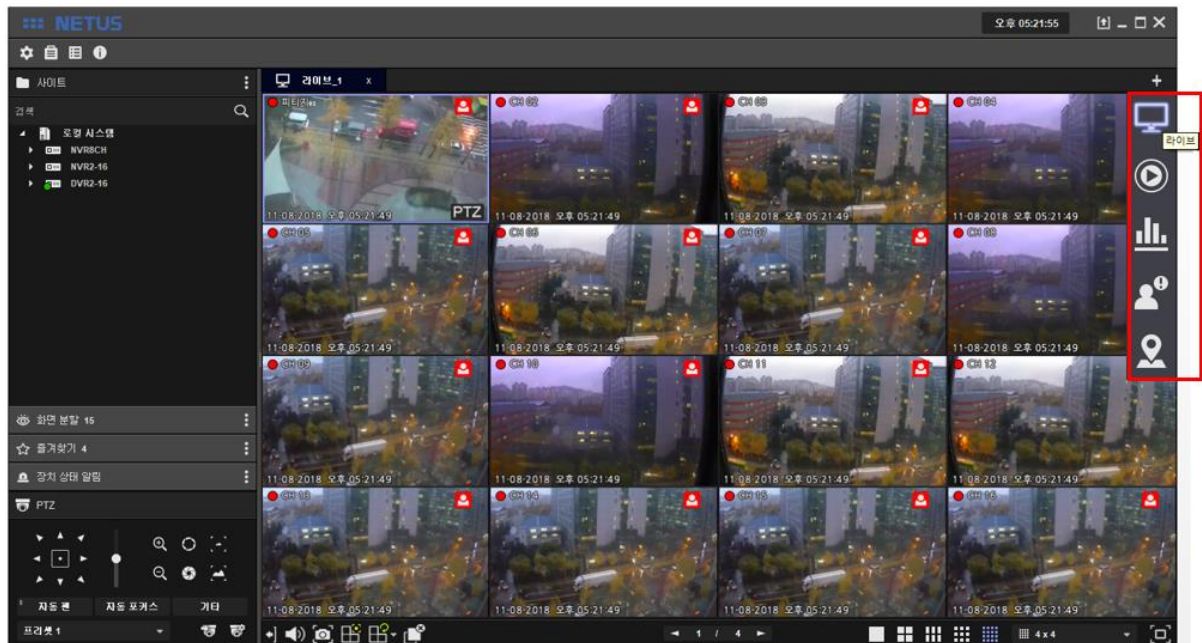


## 4. Add Tab Menu

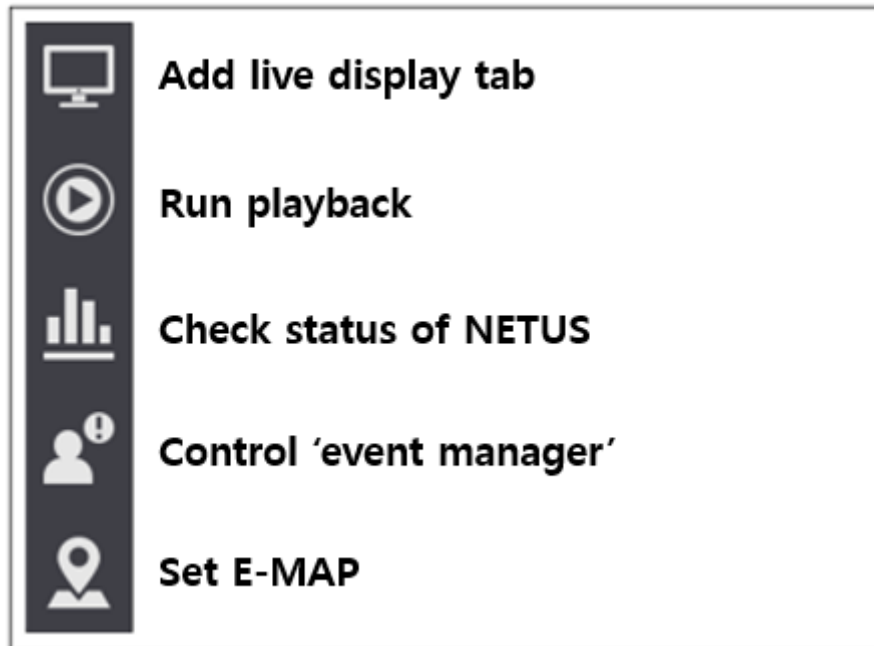
The image display tab can be added with right  tab add button below.





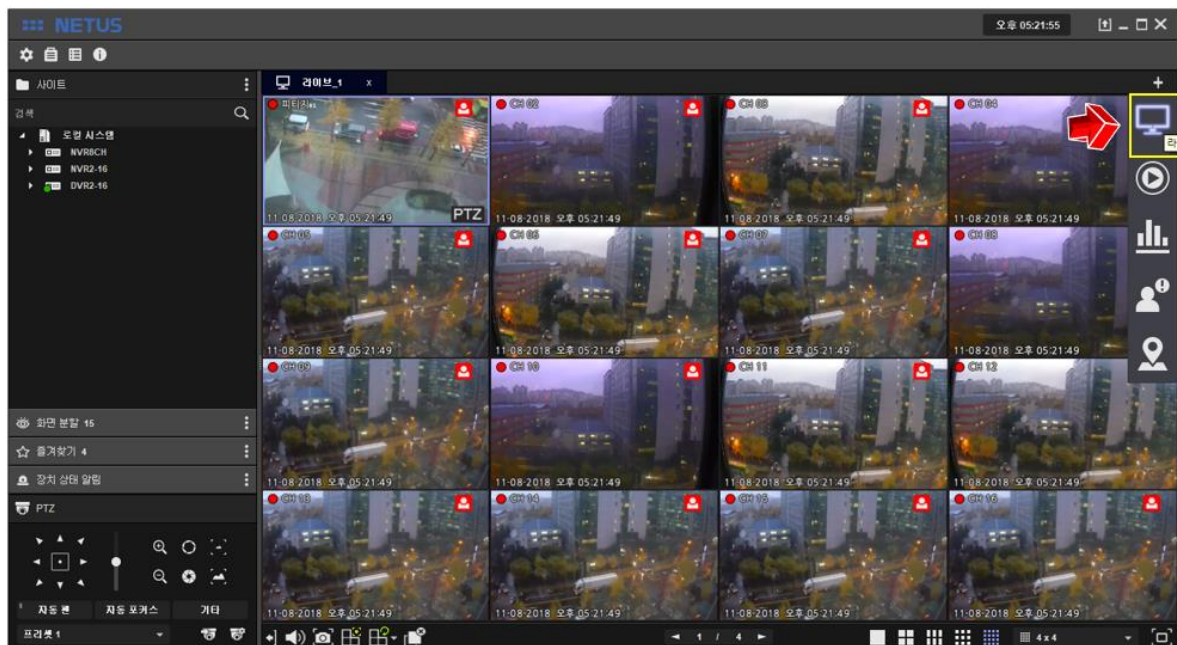
Menu bar comes out on the right side when you press  tab add button.



Each items on menu tab have functions as below.



Click the live tab  on  tab of the right side if you want to add live tab.

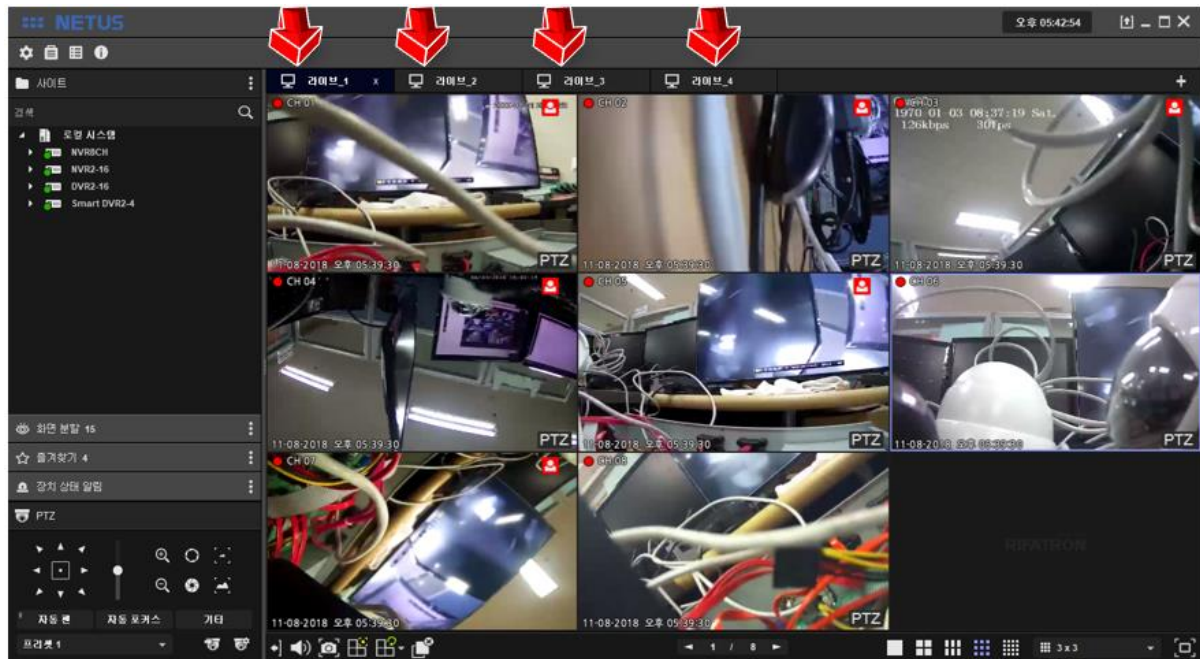


Live tab comes out as above.



If you want to make other display tab, drag other devices image also.

Live tab can be added maximum 4.



You can separate each display tab by dragging tab name.





## 5. Split Screen

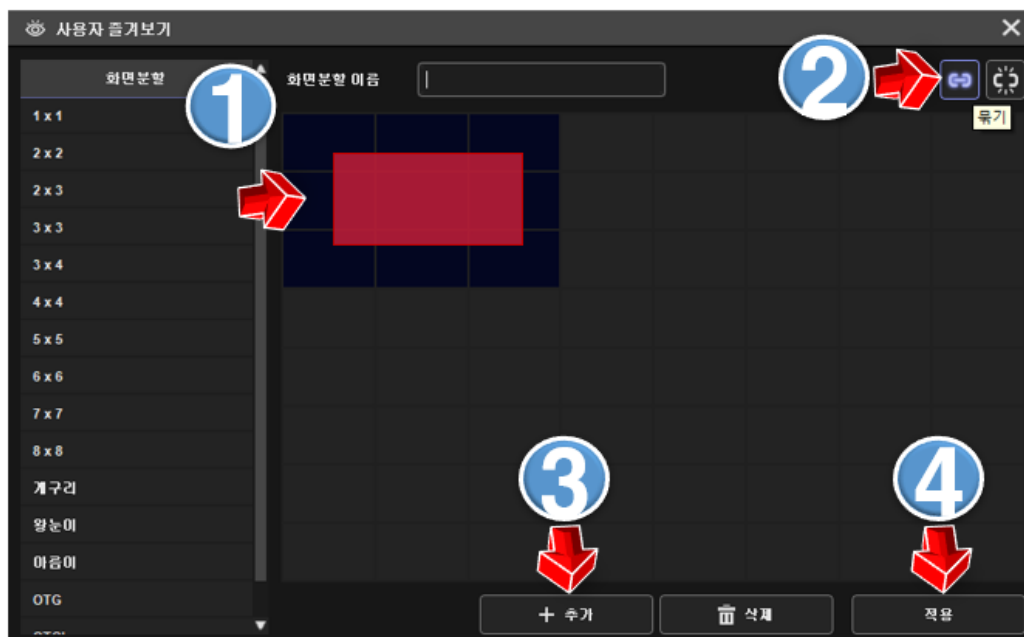
Click  as below to split screen.



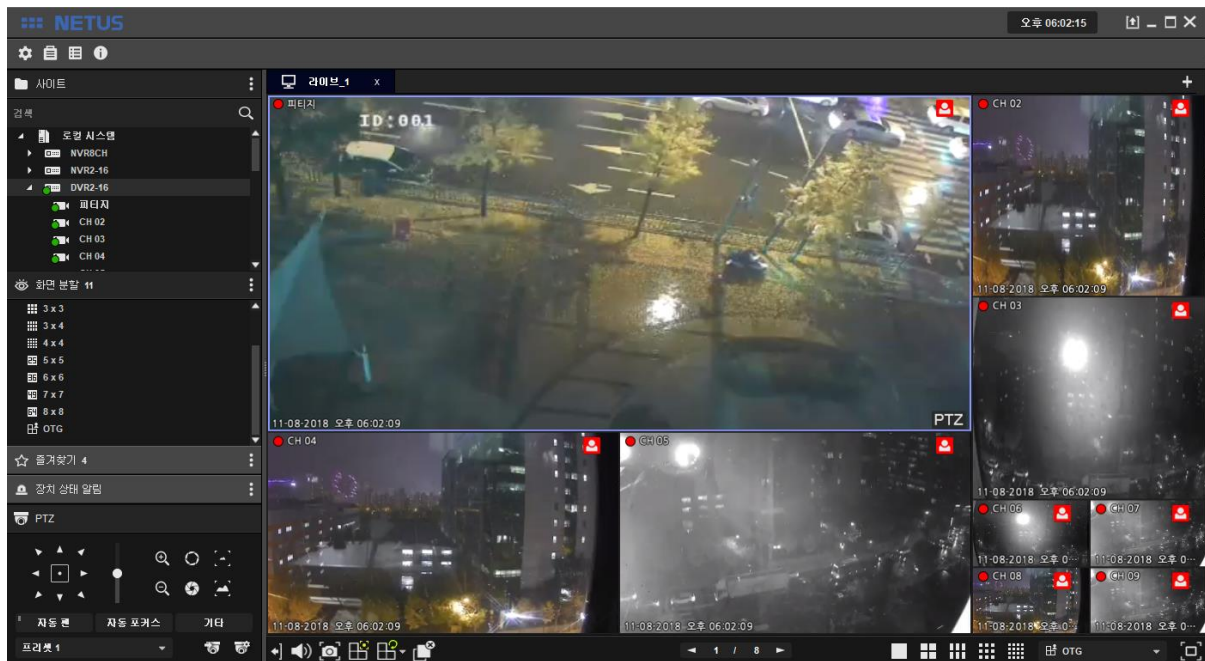
Setting window to split screen has 8x8 cell. Please set size of this cell as you want.

behind them using by button 2  below and repeat this setting.

Click button 3  once your settings are done and apply setting by click button .

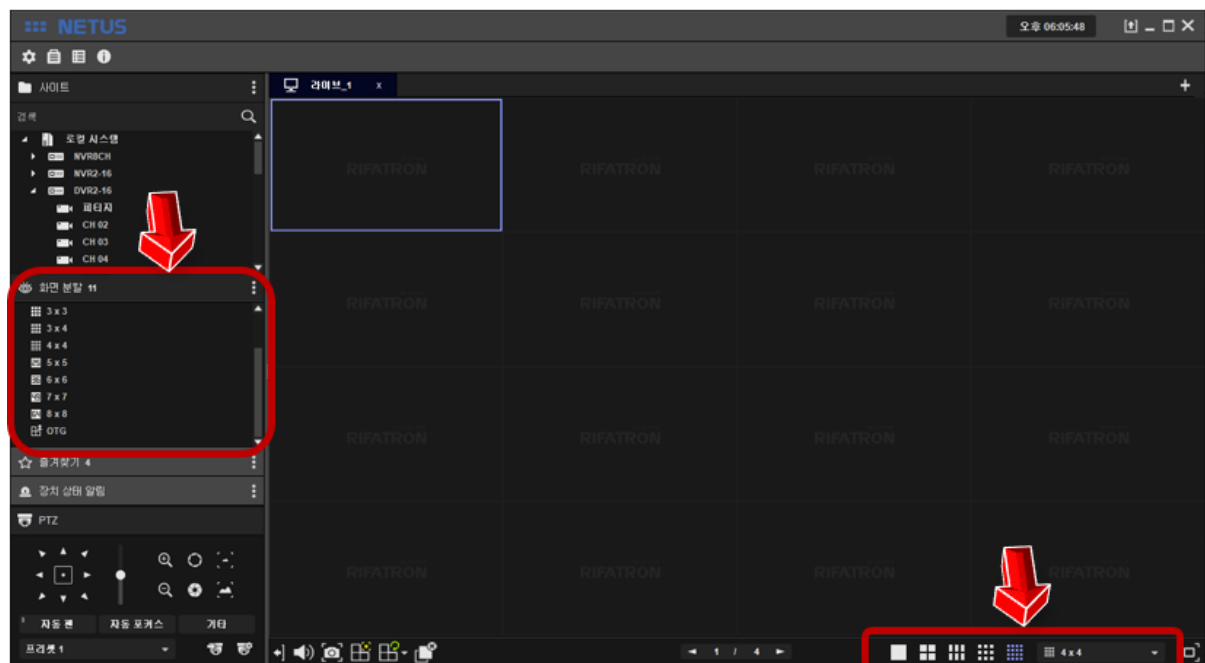


Then you can adjust size of each channel's display as you want.



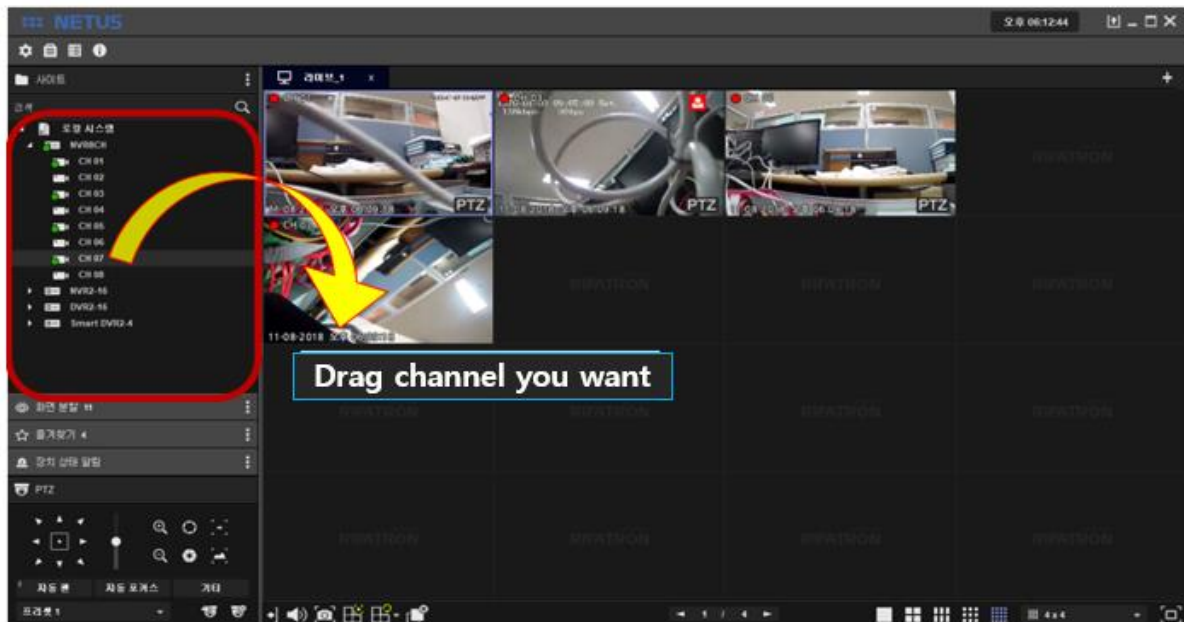
## 6. Favorite

Select display mode to set 'favorite' at side menu or bottom menu.



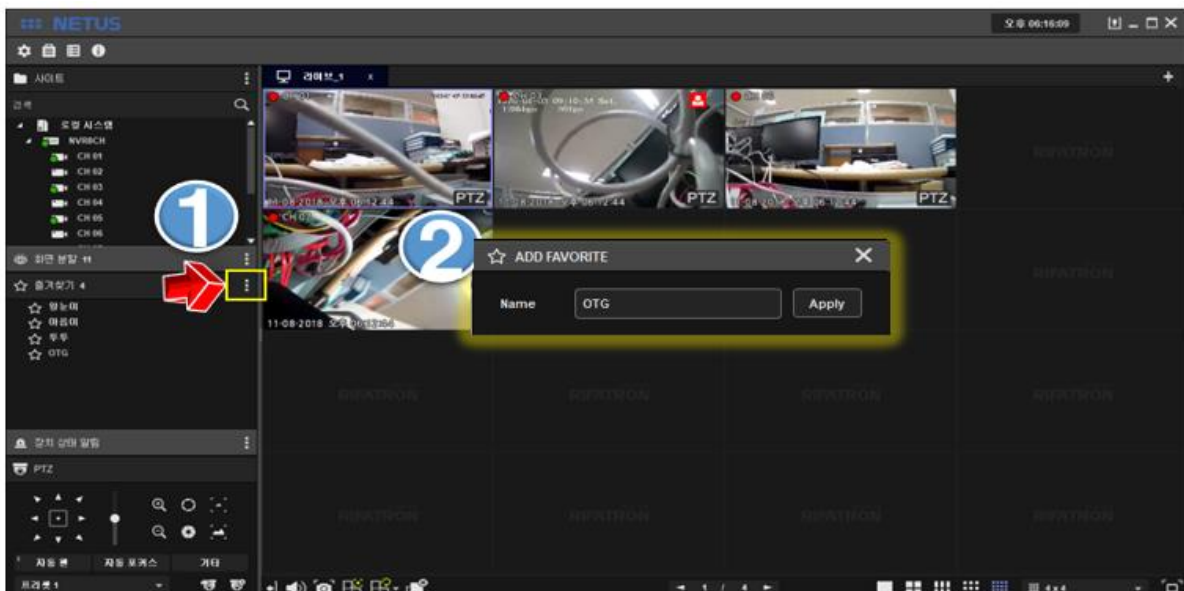
Drag channels you want and put them to the left side as below.

Picture below is to drag only odd number of channels.





Click add favorite and put favorite name you want.

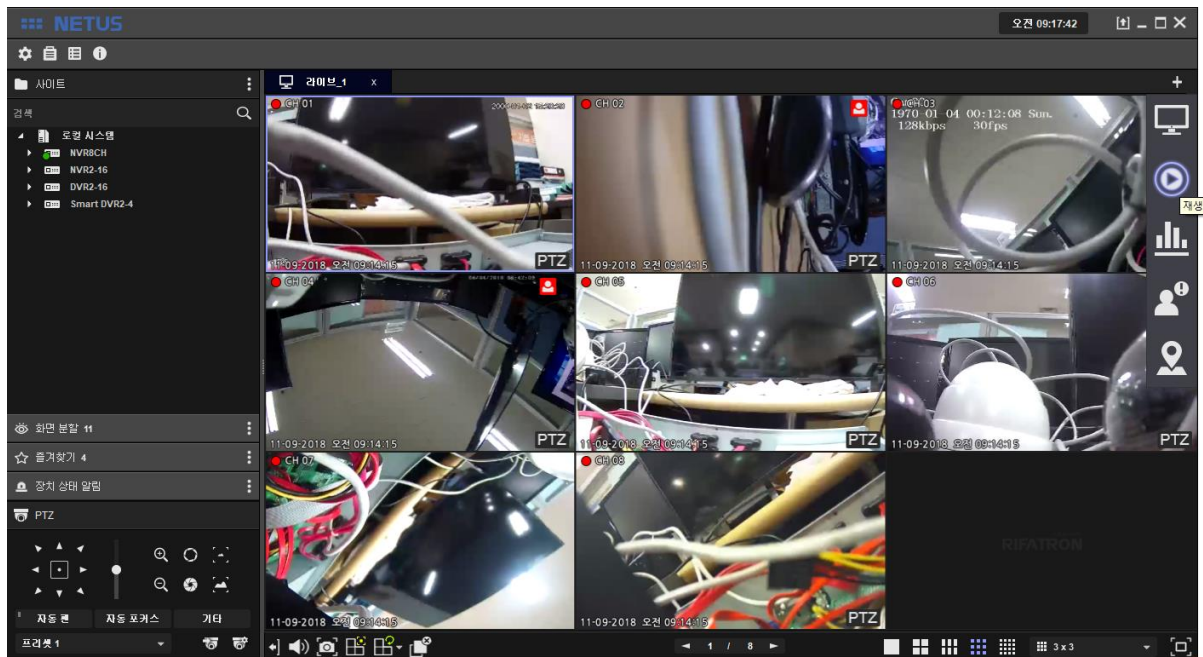
Settings are applied after click apply.



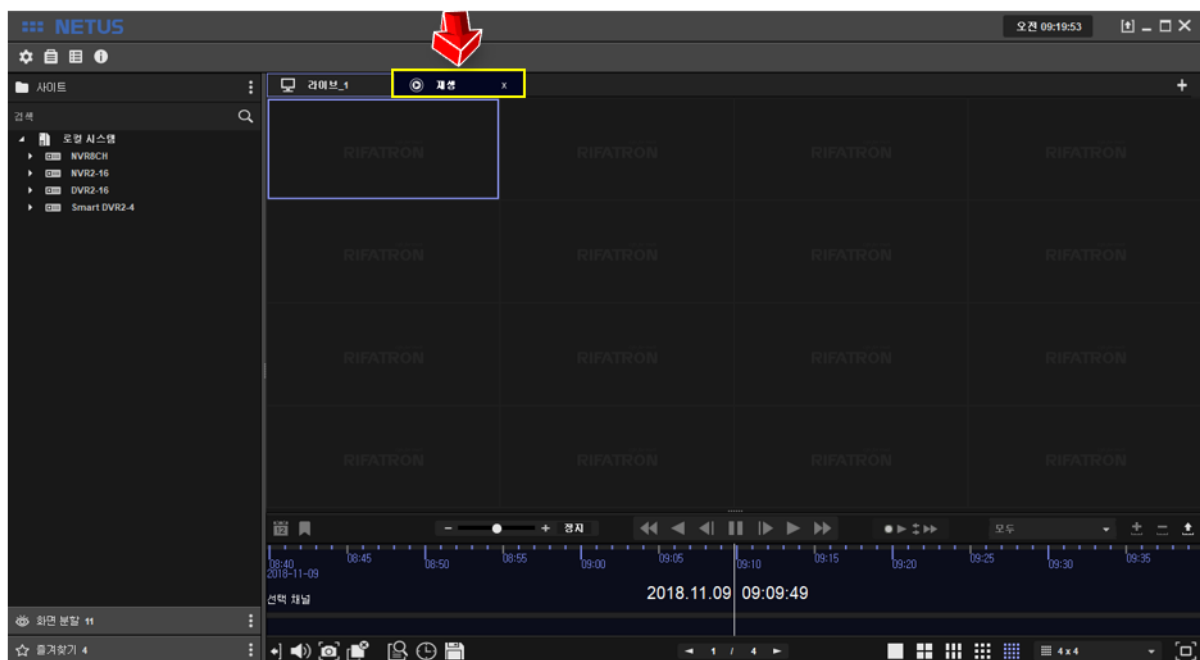


## 7. Playback

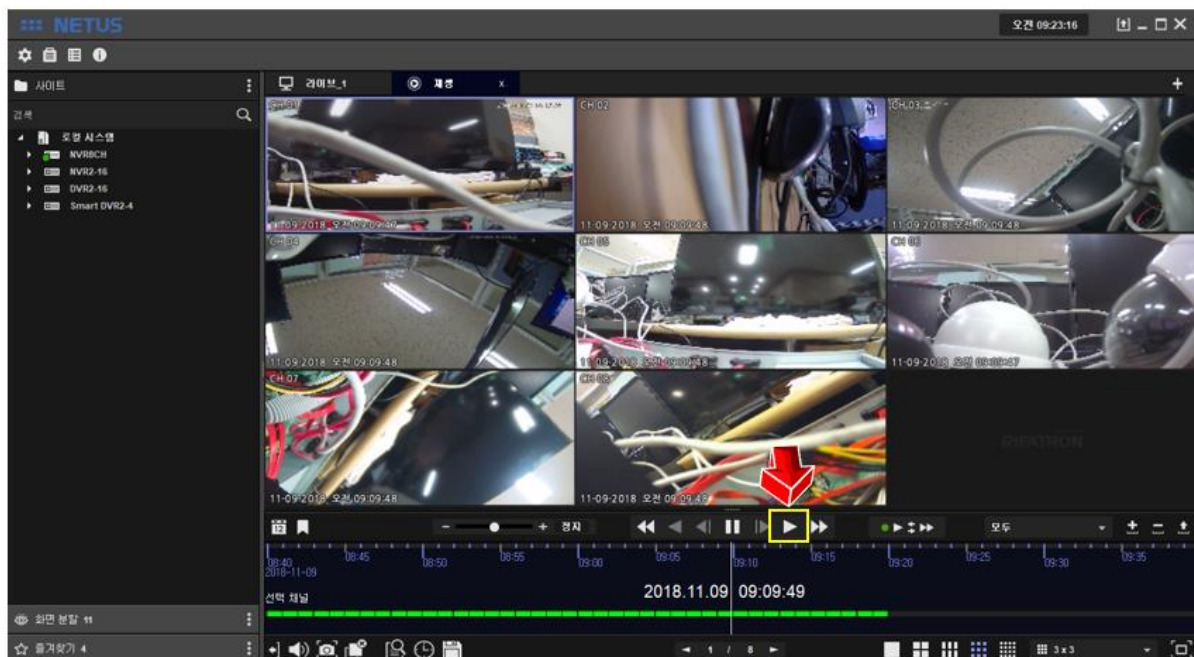
Click  tap on the right side and click the play button .



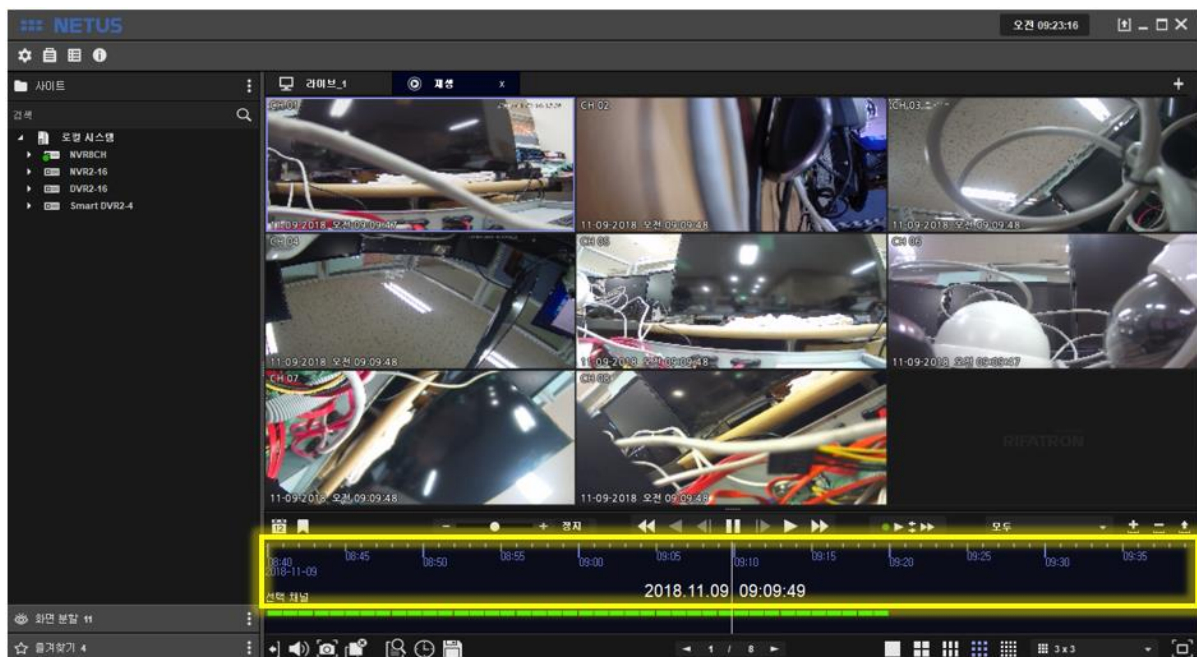
'Play' tab comes out as below.



Drag devices to the right side (play tab) in the same way as 'Live display' and click play button to play video.

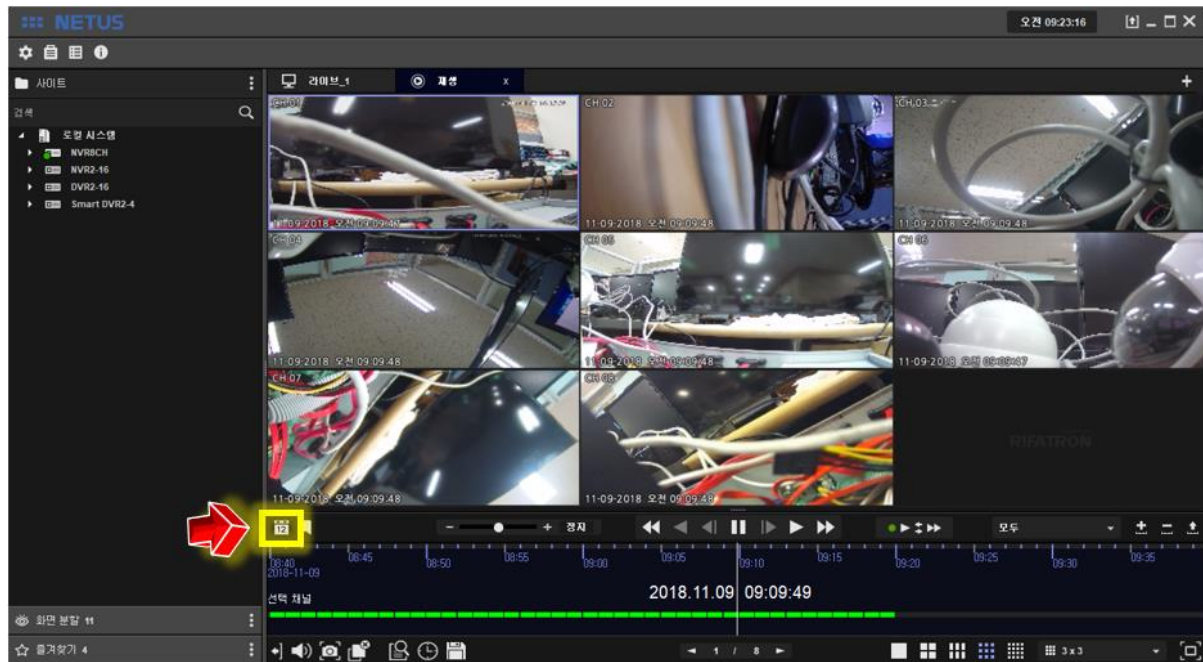


Video can be played back by click yellow area and drag mouse left and right.





You can search using the calendar.




Calendar will be displayed once you click the calendar button



<div> <span>◀</span> <span>July</span> <span>2018</span> <span>▶</span> </div>						
Sun	Mon	Tue	Wed	Thu	Fri	Sat
24	25	26	27	28	29	30
1	2	3	4	5	6	7
8	9	10	11	12	13	14
15	16	17	18	19	20	21
22	23	24	25	26	27	28
29	30	31	1	2	3	4

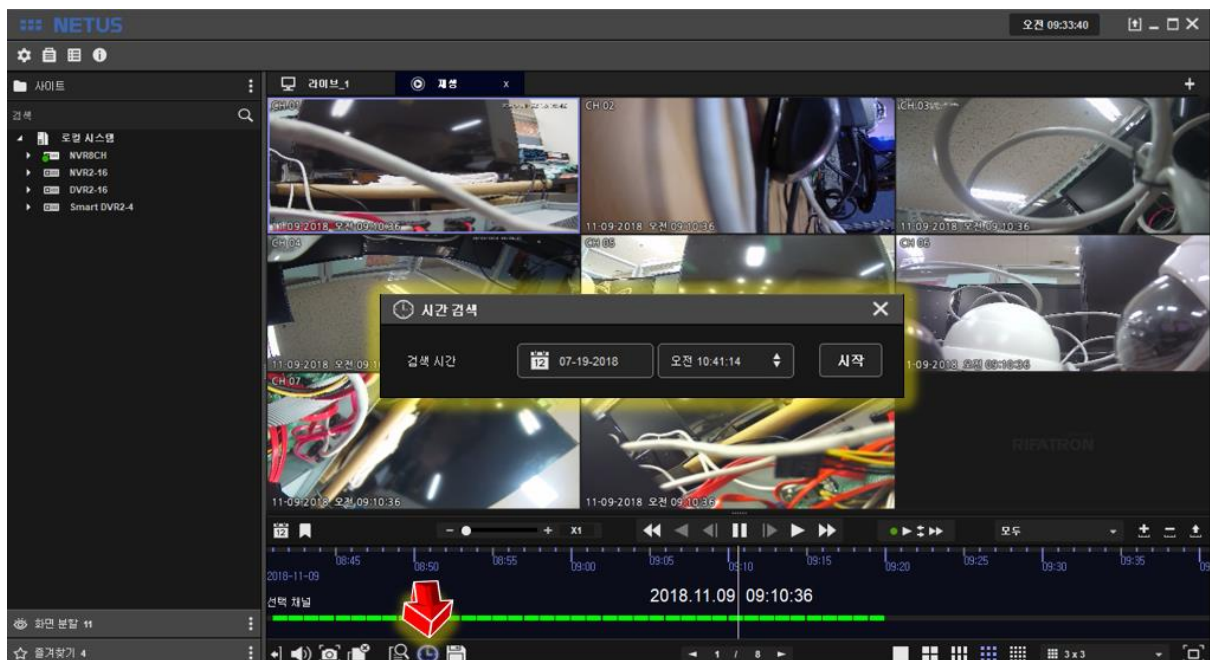



Green mark means there is recording data.

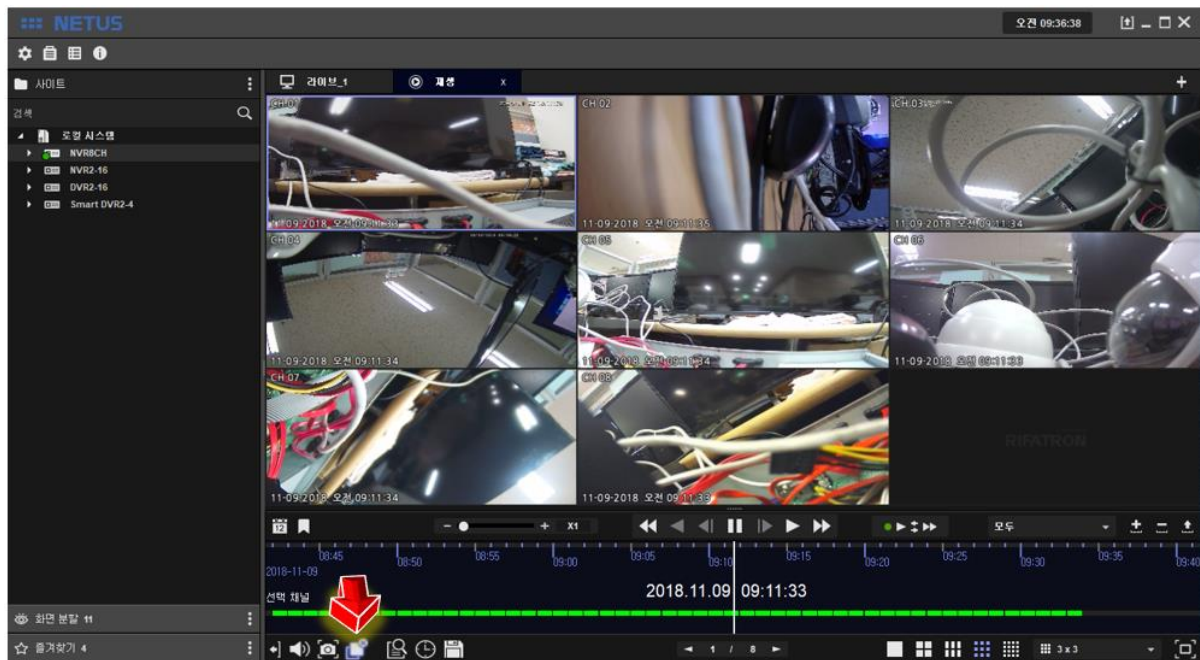
Event search window will be displayed once you click the event search button . Select Event you want to play and click 'start button' **Start**. Then particular time you selected will be played.




You can playback by using 'time search' either.

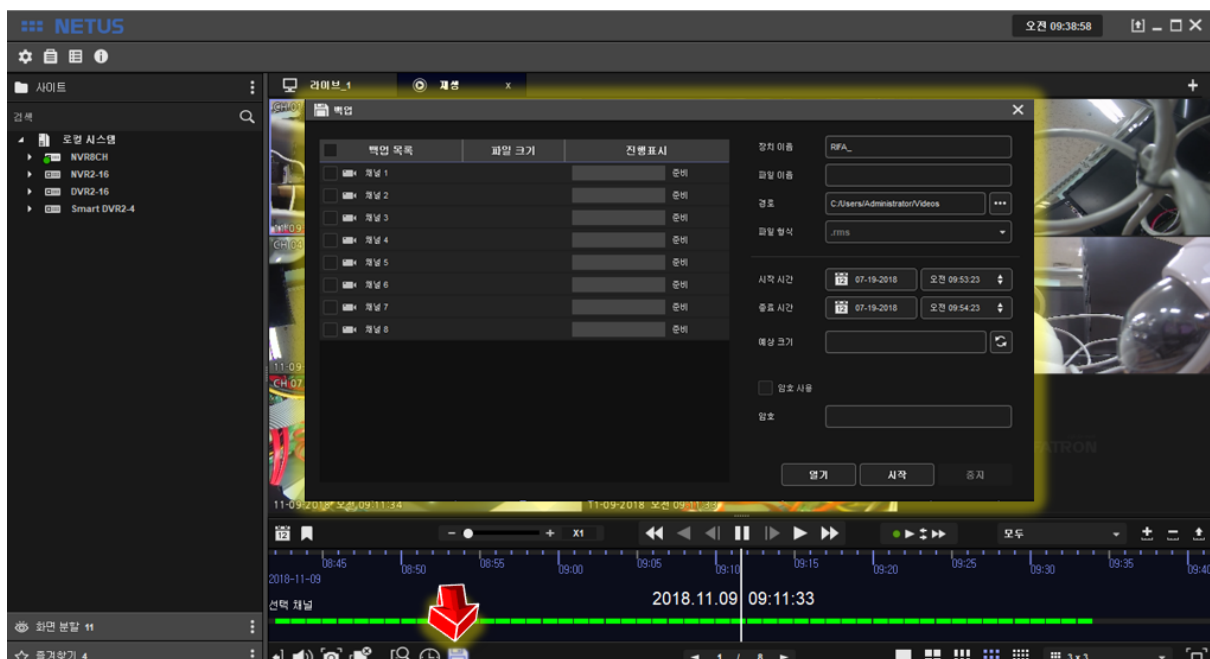


You can stop playback with 'Display Off button' .



## 8. Back up

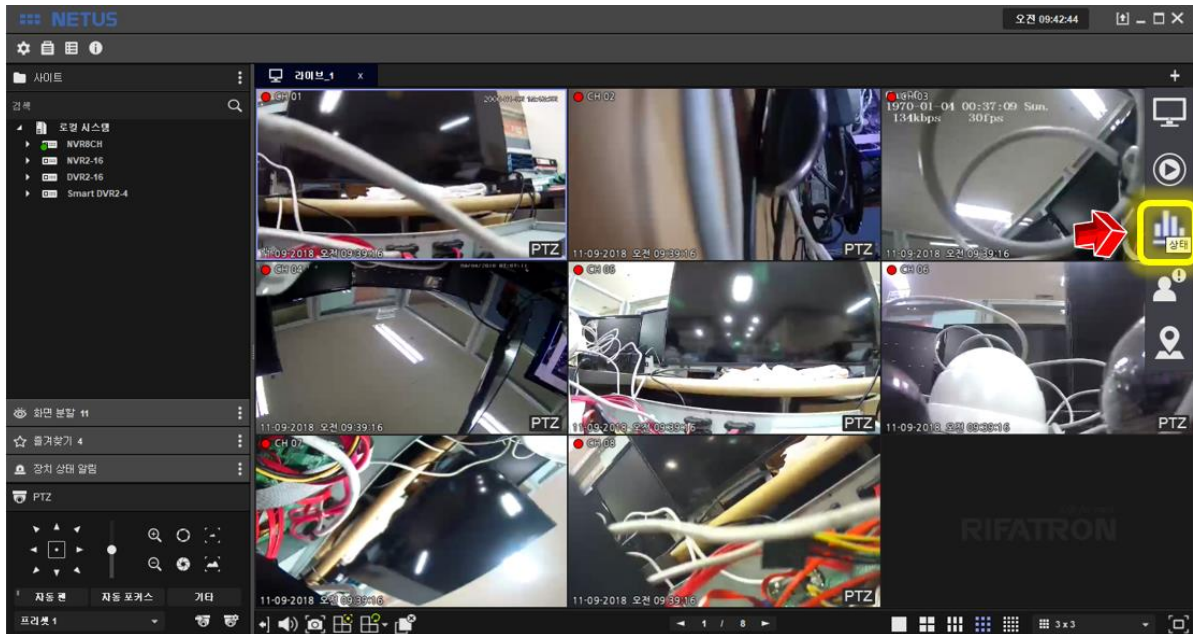
Backup window comes out once you click the backup button at playback tap  as below. You can proceed backup with it.



## 9. System Status



Click the status button.



It shows the status of the PC where the current NETUS is installed.




You can see the name, address, channels, resolution, HDD status, FPS, KBPS, recording, network status and detailed info of each registered device.

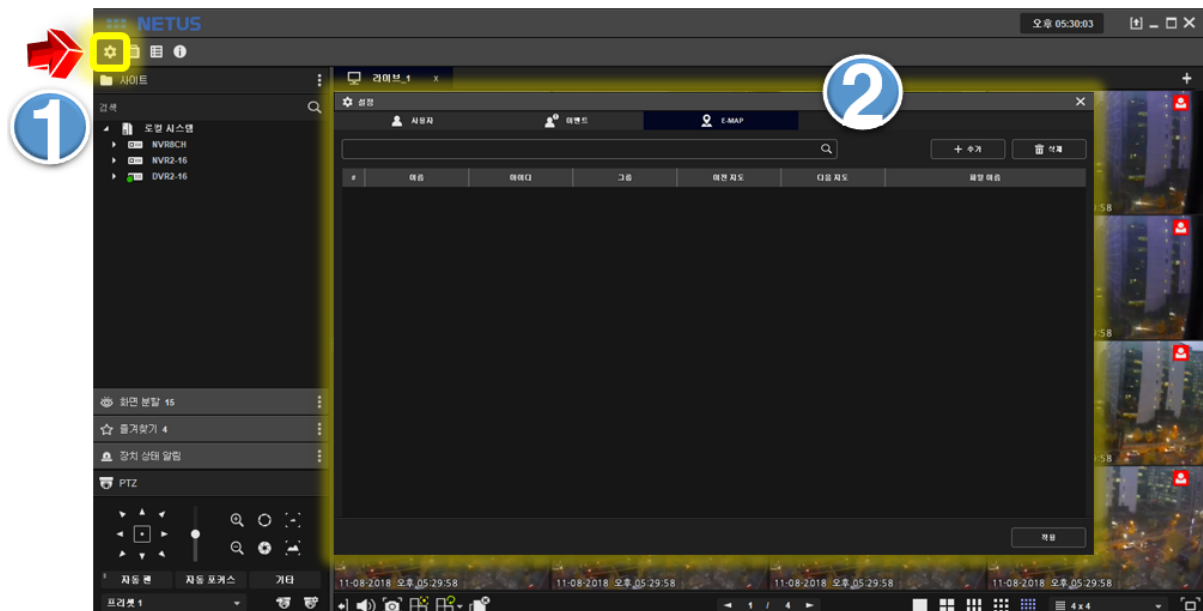




You can see the detailed info as shown below once you click the right most  button.

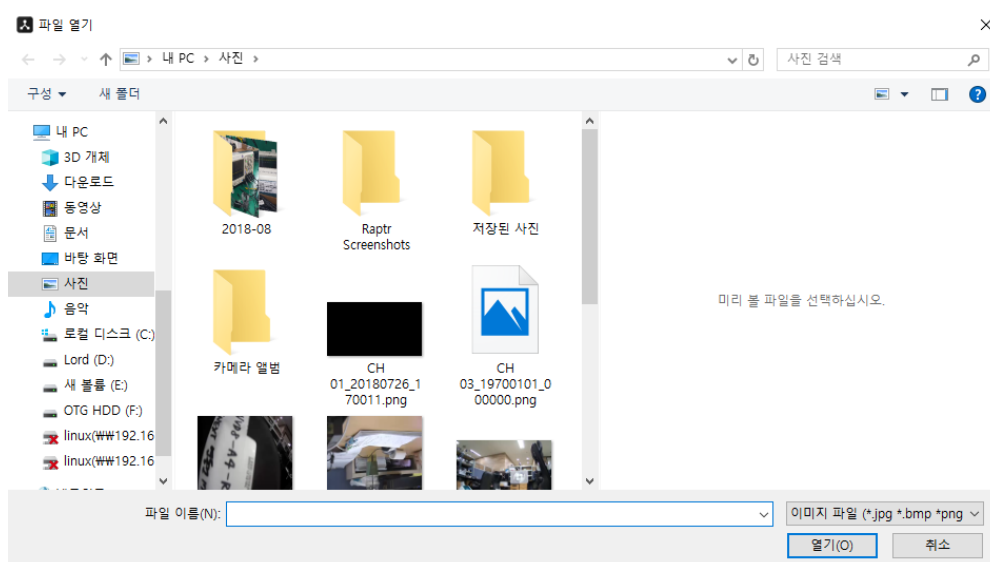
헬스 세부 정보		×
범주	상태	
장치 모델	H6 DVR, NVR	
장치 이름	REC_000C280B7C61	
고유식별자	192.168.10.48, 000C280B7C61	
최대 채널	24	
해상도	-	
NTSC/PAL	NTSC	
HDD(GB)	122/2000, 6.1% (10-29-2018 , 11-01-2018), 덮어쓰기	
녹화	네	
DSP	충음	
권	충음	
하드웨어	충음	
온도	충음	

## 10.E-MAP

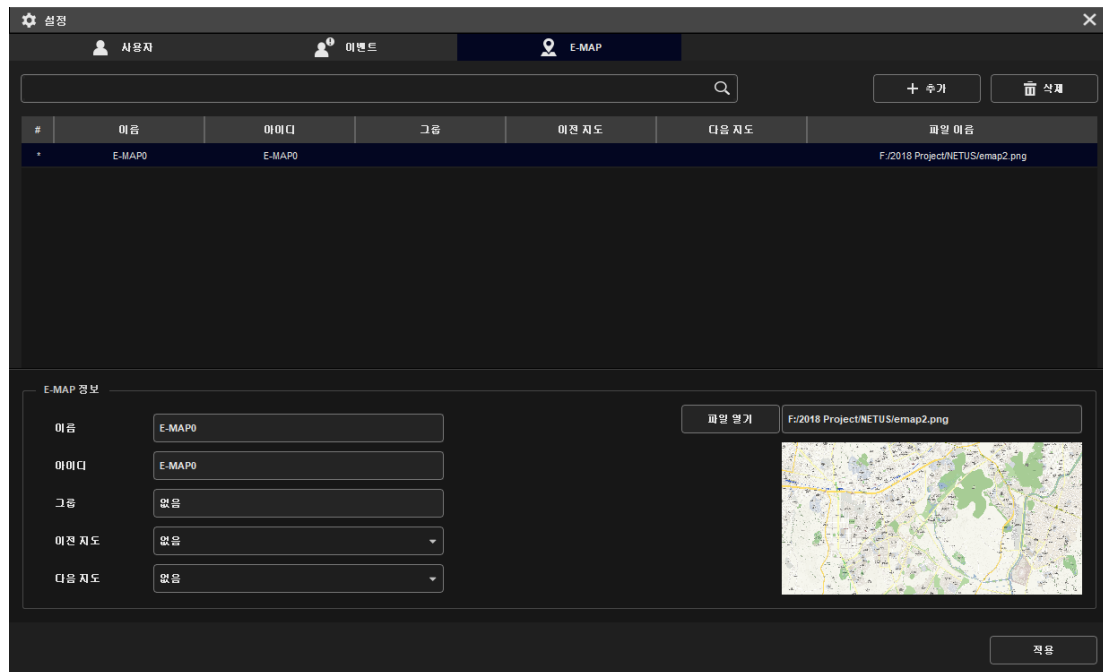
Add the image for E-MAP. Click  the settings button and set up the E-MAP tap.



Click the add button  and then click the add files button  for selecting image.

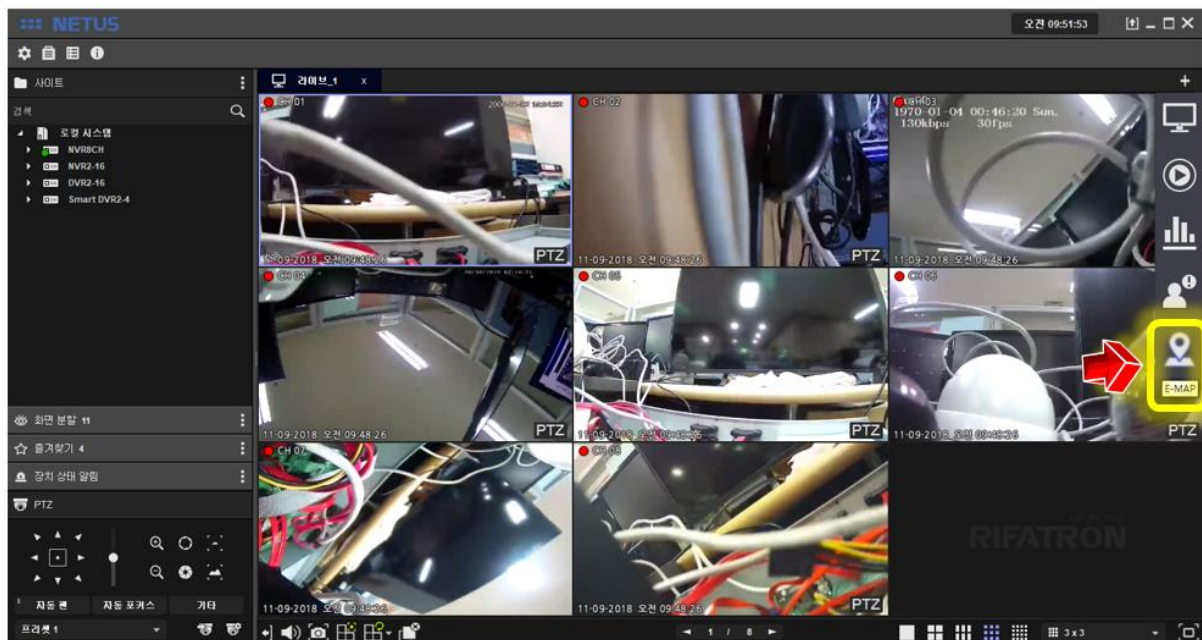


Click the apply button at bottom. Now selecting the map for E-MAP has been completed.

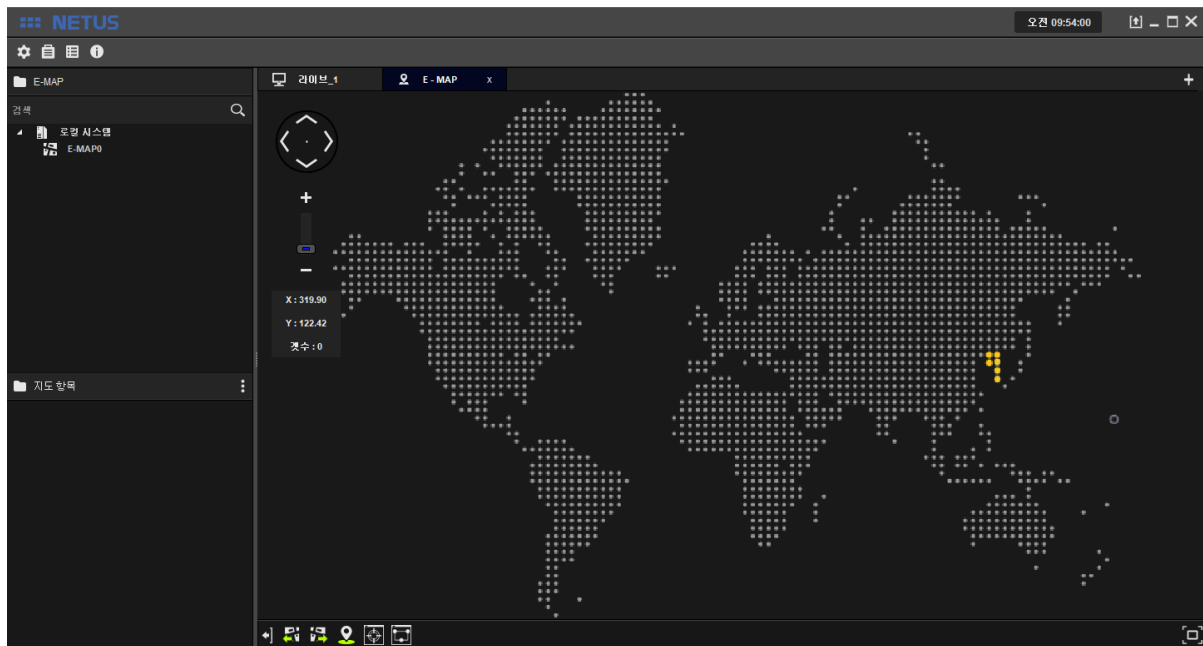


Compose the E-MAP with below steps.

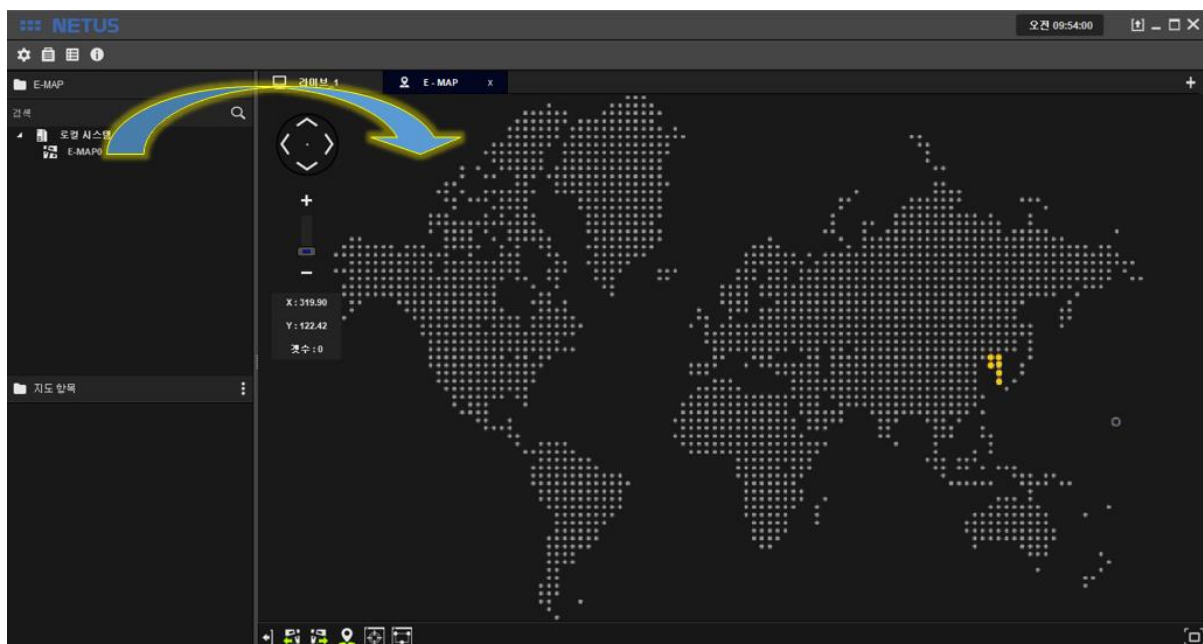
Click the  button at below image.



Then the window as below will be displayed.

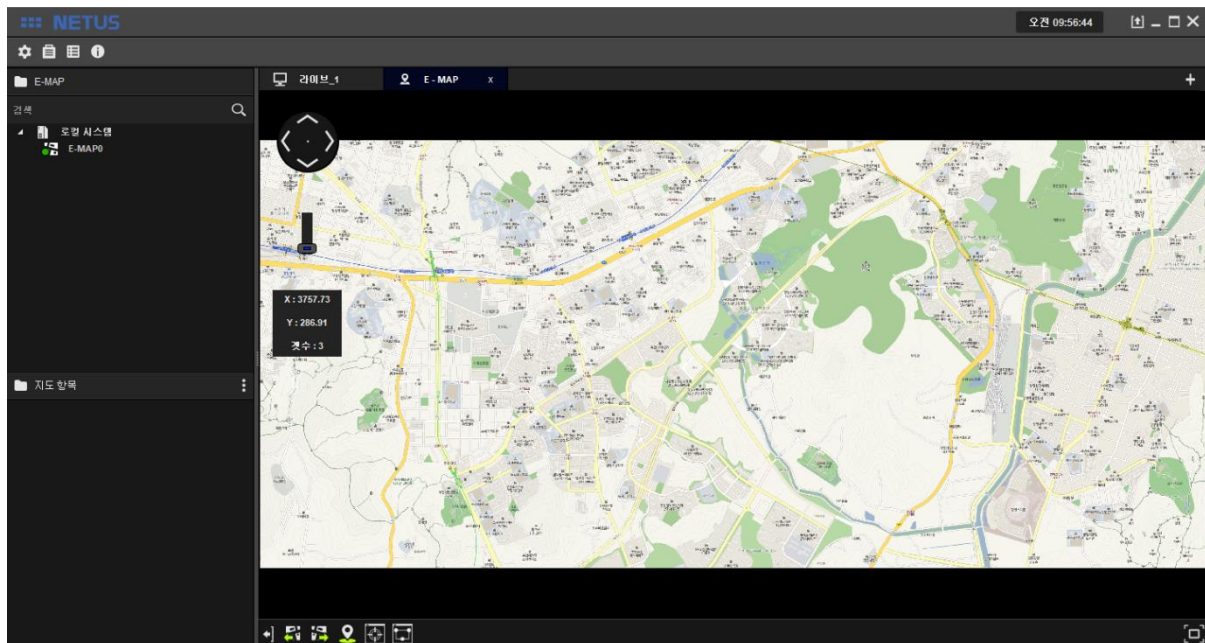


Drag the map image at left side menu to E-MAP tap.



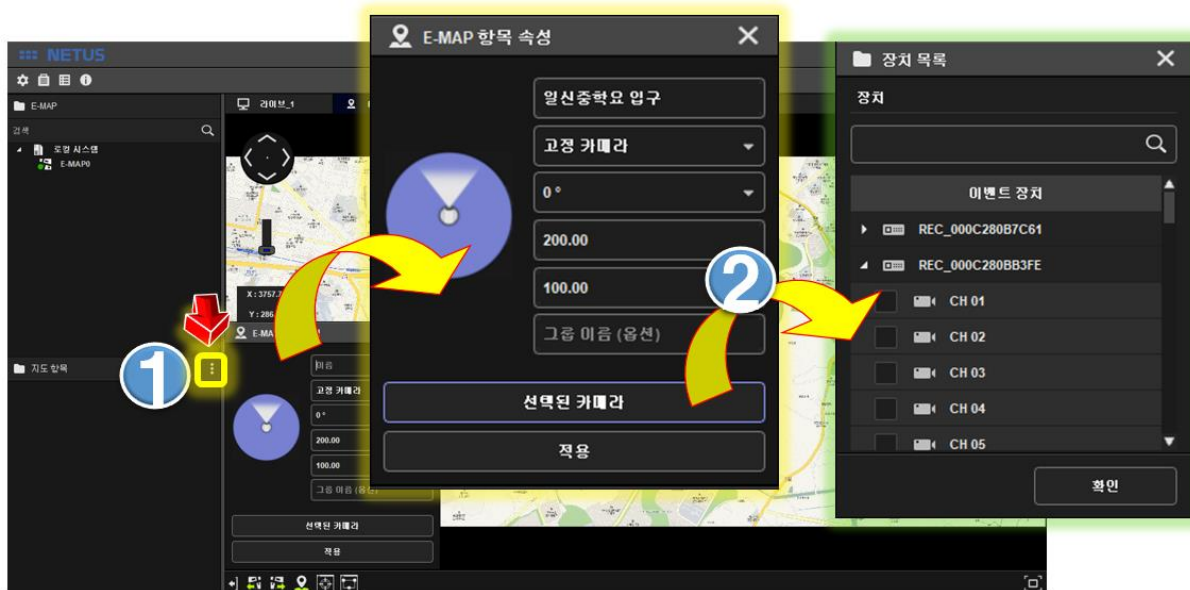


Adjust image as you want with zoom in/out the map.



Click 'add E-MAP button' **1** then E-MAP item property window will come out.

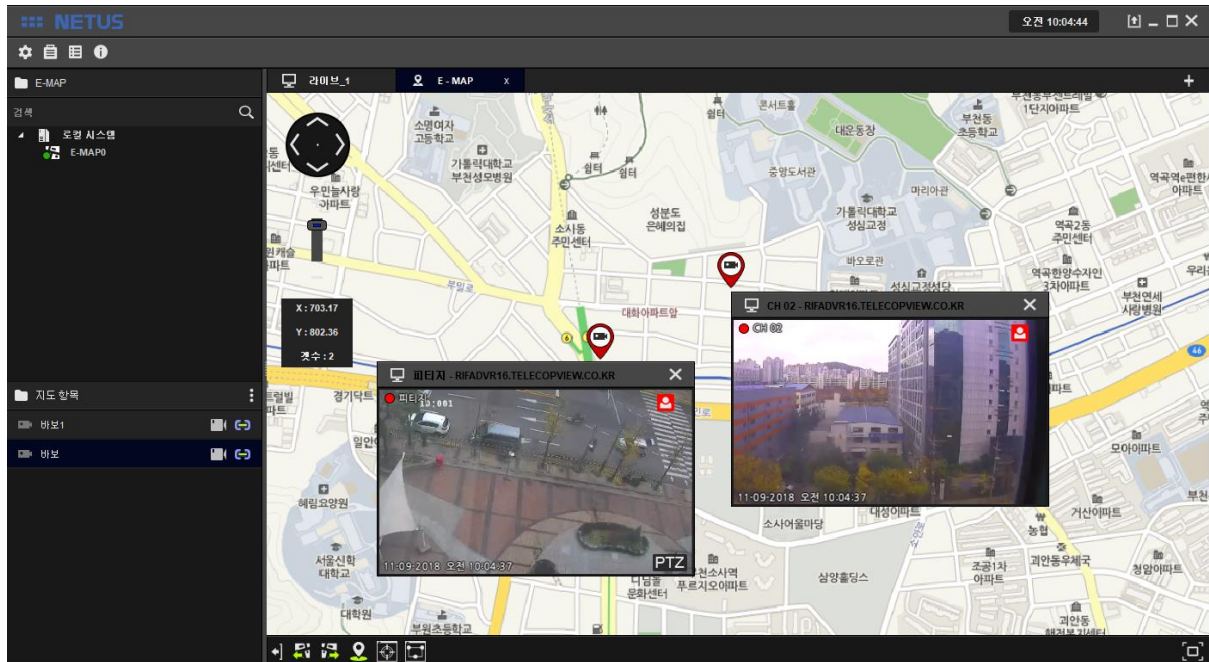
Fill in the name and settings to be displayed in E-MAP. You can select the camera to be connected to this name like number 2 **2** once you click the selected camera



Select the camera and click OK button.

. You can see the video once camera is added to left side tap.

You can set a number of cameras.



# Thank you