

Appendix A: OAKLAND TRUST FOR CLEAN WATER, SAFE PARKS PROJECT LIST

\$4,500,000 for

Acquisition of Watershed Protection **easements**, including acquisition of high-value, restorable habitat, watersheds of creek segments with presence of rainbow trout and other wildlife populations,

and **property**

of high aesthetic and water- quality protection values.

Current funding

~\$870,000

Past due for spending

Want to spend it quickly, and wisely on the best conservation outcomes

Analysis paralysis

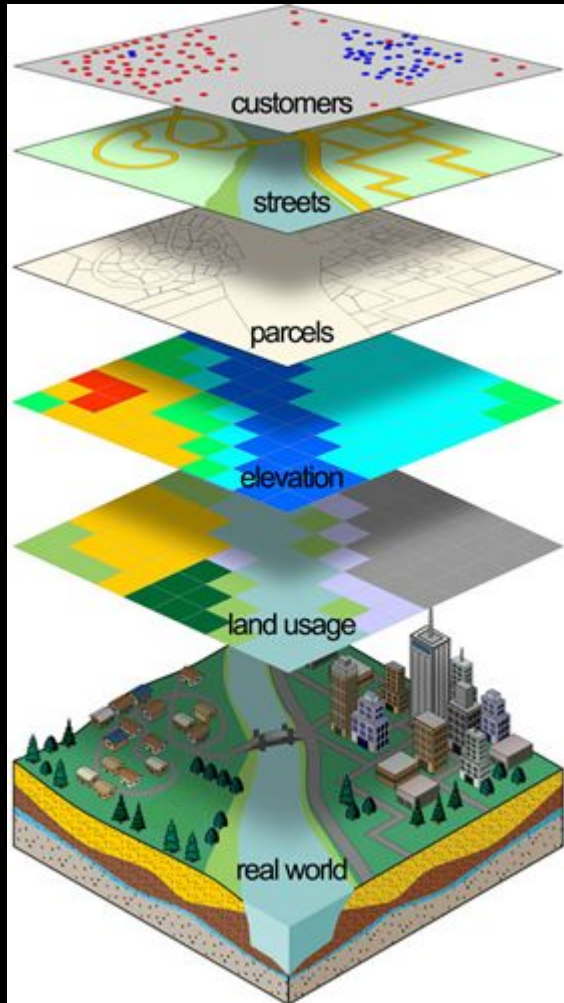


Decision making tool

1. Objective
2. City-wide
3. Incorporating disparate data
4. Map based

Contracted with Robin Hunter and Dean Mortarana, of Montrose Environmental

GIS “layer cake” model



Overlaid map layers for conservation and equity factors

High value, restorable habitat

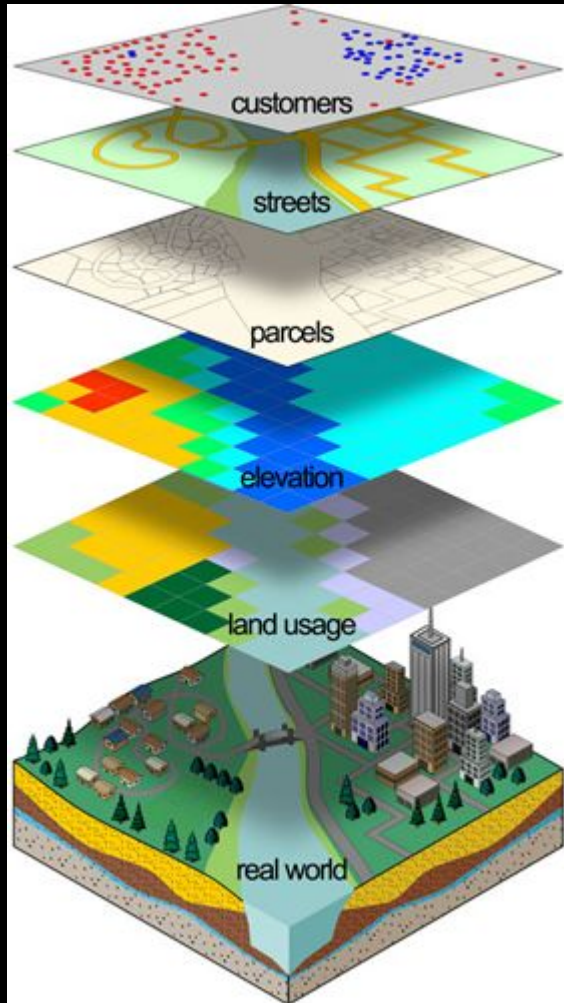
Creekside parcels

Rare Plants and Animals

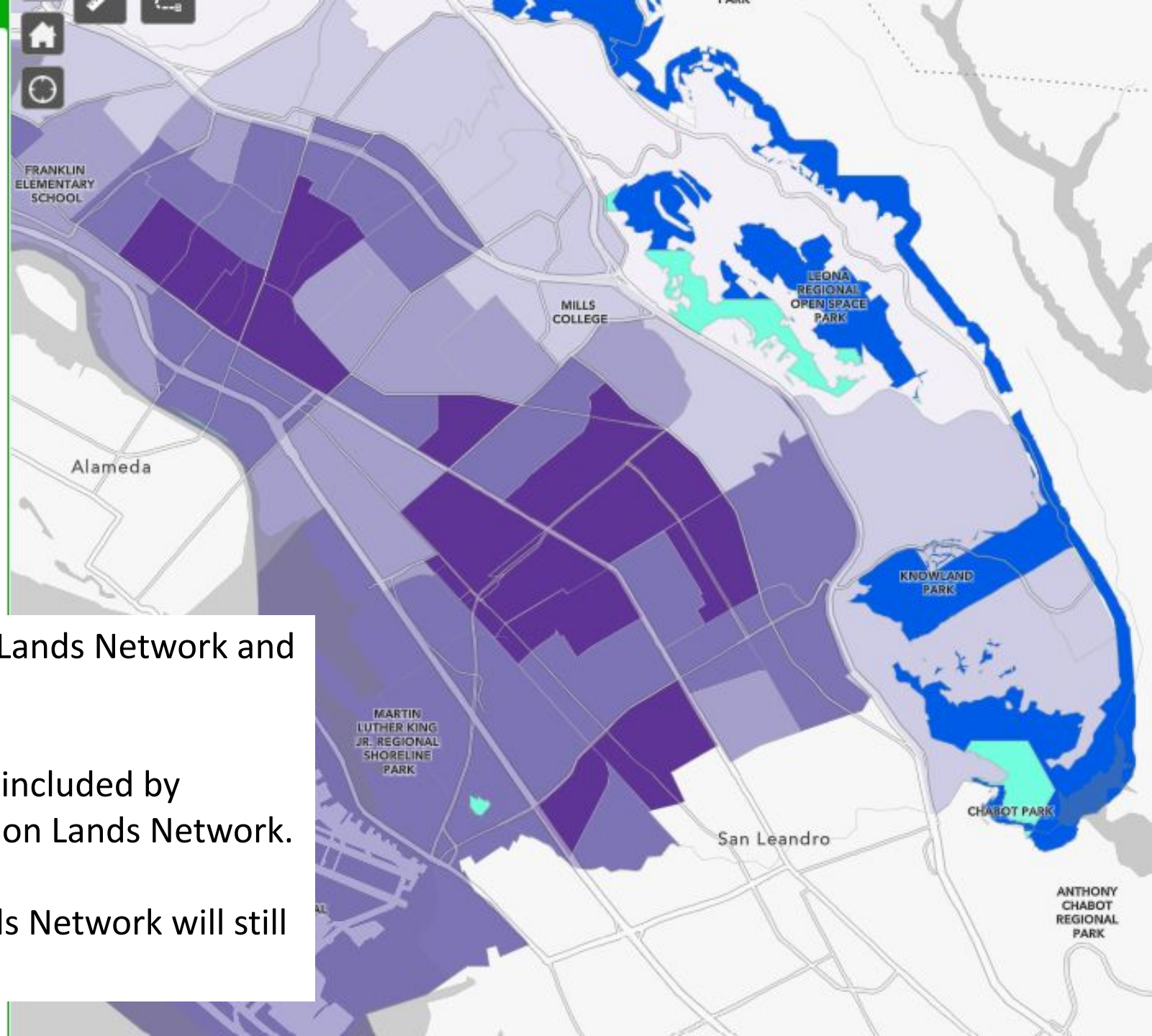
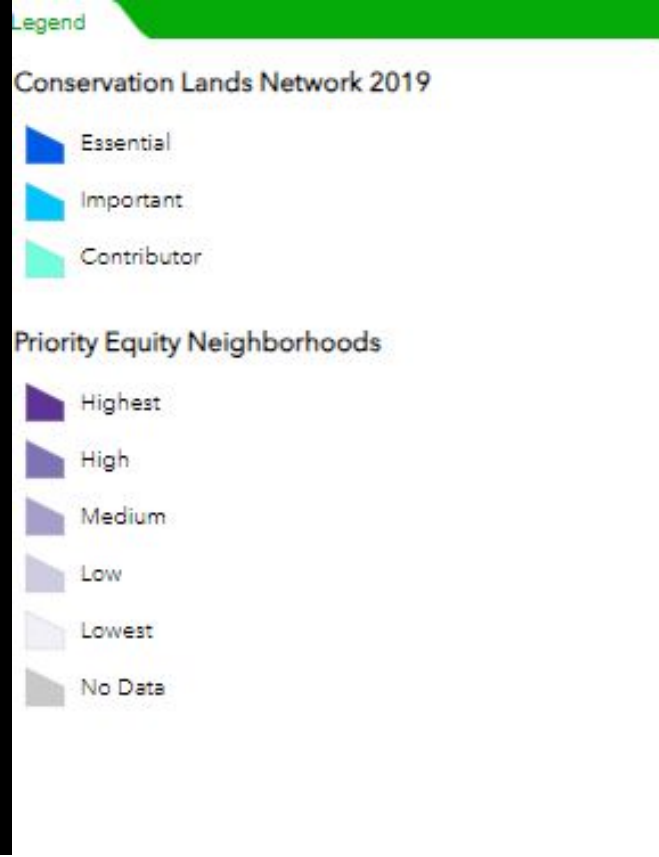
Expansion of contiguous land conservation protections /
Adjacent to existing parks

Increased Equity Access / Benefit to Equity Areas

“Layer cake” ingredients



1. Conservation Lands Network
2. Oakland Creeks
3. United State Fish & Wildlife Service National Wetlands Inventory
4. California Natural Diversity Database
5. East Bay Regional Park District and Oakland Parks, Oakland conservation/easement parcels, Butters Canyon parcels.
6. Priority Conservation Areas
7. Priority Equity Neighborhoods
8. United States Geologic Survey mapped serpentine soils

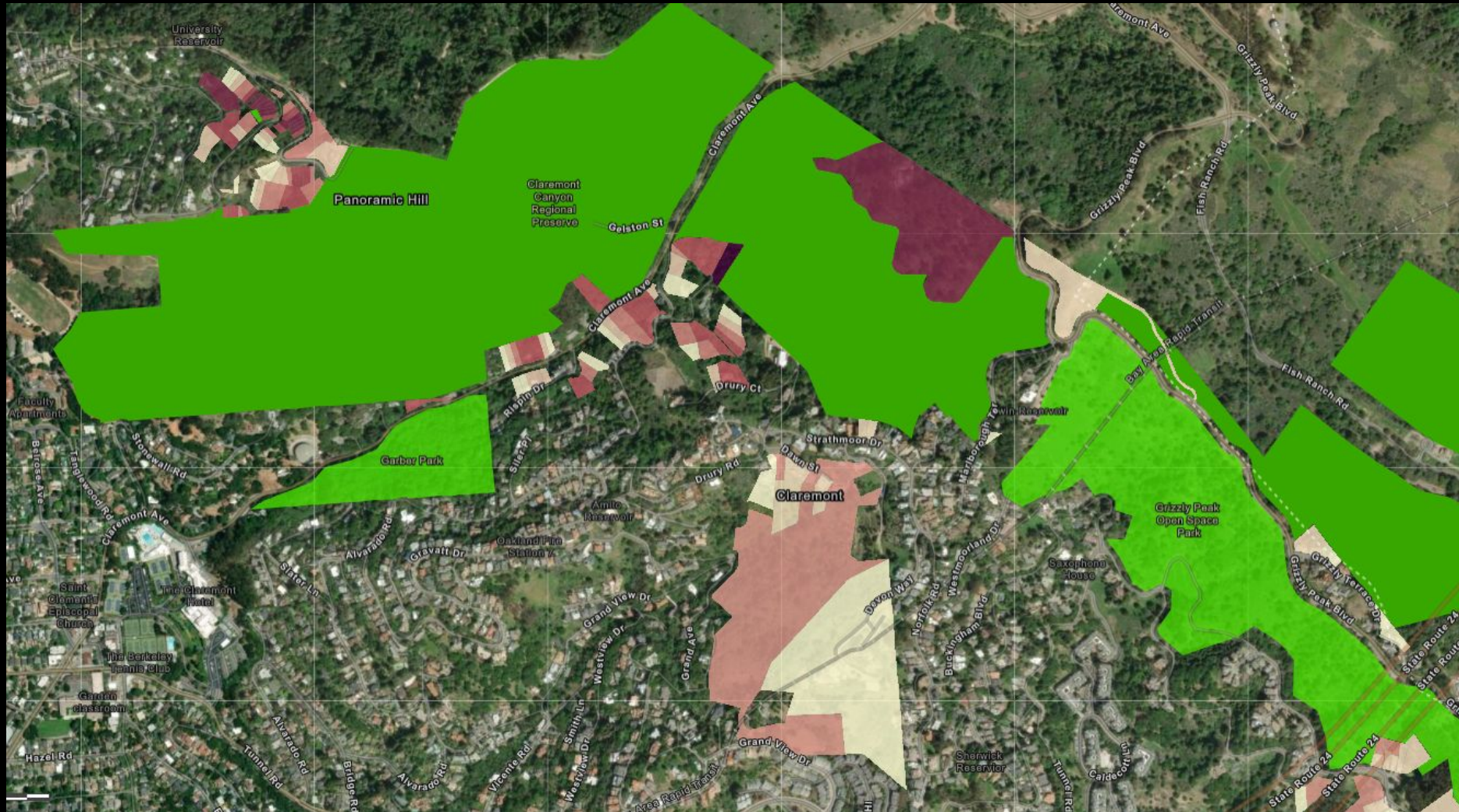


Model weighted towards the Conservation Lands Network and the Oakland Equity areas.

Accounts also for Oakland specific sites not included by regional efforts like the Bay Area Conservation Lands Network.

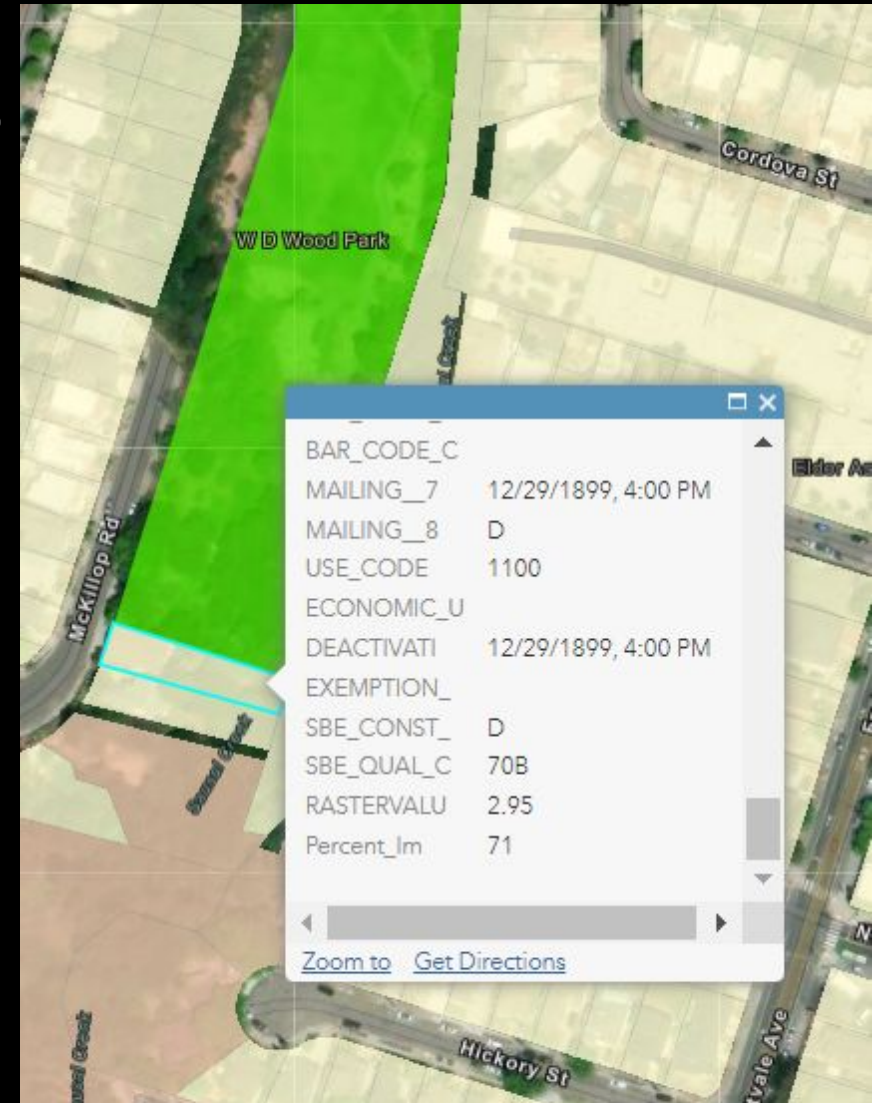
Regional priorities of the Conservation Lands Network will still be served by DD and beyond

We can look “top down” across Oakland at best fit of the model



We can look “top down” across Oakland at best fit of the model

We can also look “bottom up” at particular parcels to see their model scores, as well as the any other map overlays of interest



Selecting conservation parcels

Review feasibility of top scoring parcels:

1. Adjacency to other protected lands?
2. Conservation values
3. Site management/ownership liabilities
4. Assessed value
5. Partner interest
6. Willing seller
7. Etc.

Conserving land

Negotiate land and easement sale and donations with existing funding

Pursue additional funding with Coastal Conservancy and others

Series D Tranche of Measure DD funds - TBA

Live map demo

Question and Answer

