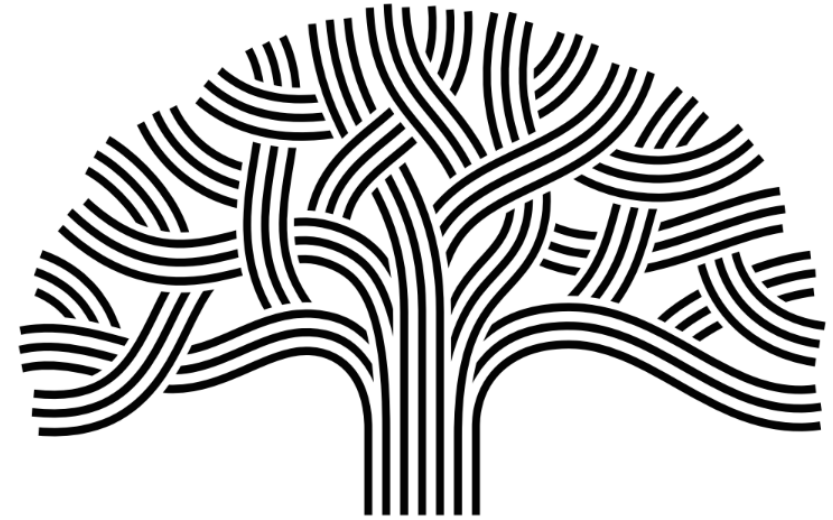


Commission on Homelessness

Homelessness Division
Encampment Management Update
July 26, 2023



CITY OF
Oakland

***"Homelessness is among the biggest
issues facing Oakland."***

*- 2022 Homelessness Services Performance
Audit*

AGENDA

Homelessness In Oakland

Encampment Management

Encampment Operations

Work Ahead

Oakland's Unhoused Population

Count of Unsheltered/Sheltered Individuals for Oakland

Source: 2022
Point-In-Time Count,
EveryOne Home



Oakland's Unhoused Population

Unsheltered Homelessness Data Summary



3,337 Individuals

Were observed as being unsheltered in Oakland.



7,135 Individuals

Were observed as being unsheltered in Alameda County.

47% of unsheltered Individuals in Alameda County Live in Oakland

Unsheltered Population by Location



	Tent	Car/Van	RV	Street/ Outside	Abandoned Building
Oakland 2022	1063 (32%)	1031 (31%)	907 (27%)	308 (9%)	28 (1%)
Oakland 2019	1320 (41%)	727 (23%)	703 (22%)	420 (13%)	40 (1%)
Alameda County 2022	2216 (31%)	2318 (32%)	1600 (22%)	958 (13%)	43 (1%)
Alameda County 2019	2172 (34%)	1431 (23%)	1386 (22%)	1239 (20%)	84 (1%)

Oakland's Unhoused Population

Sheltered Homelessness Data Summary



1,718 Individuals

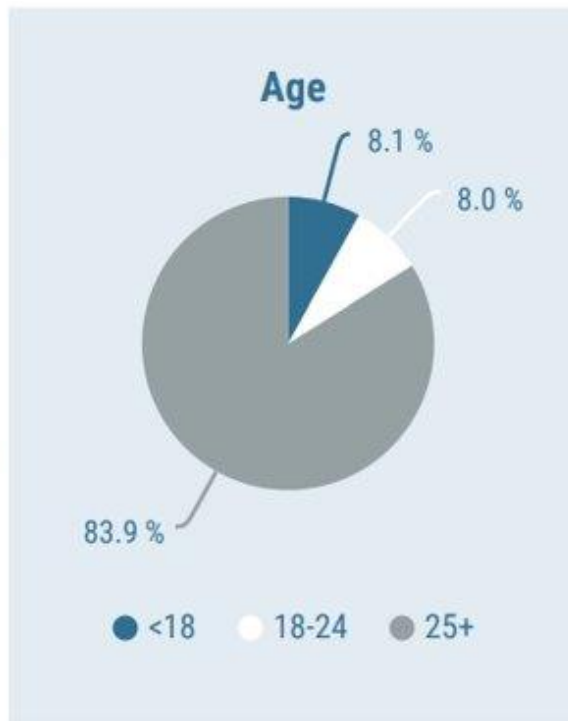
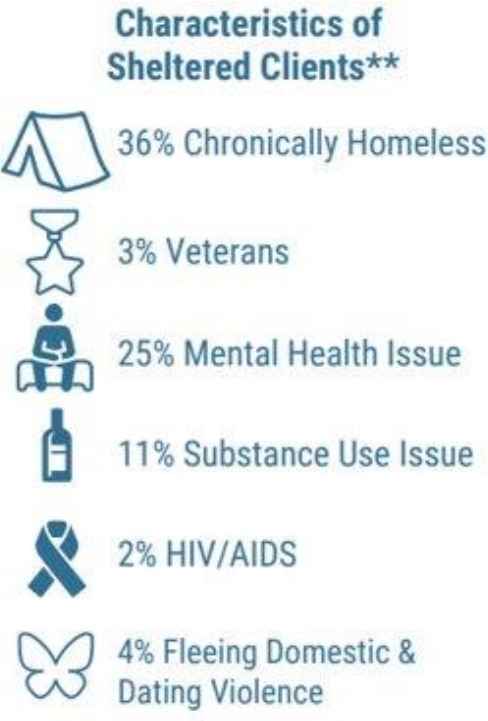
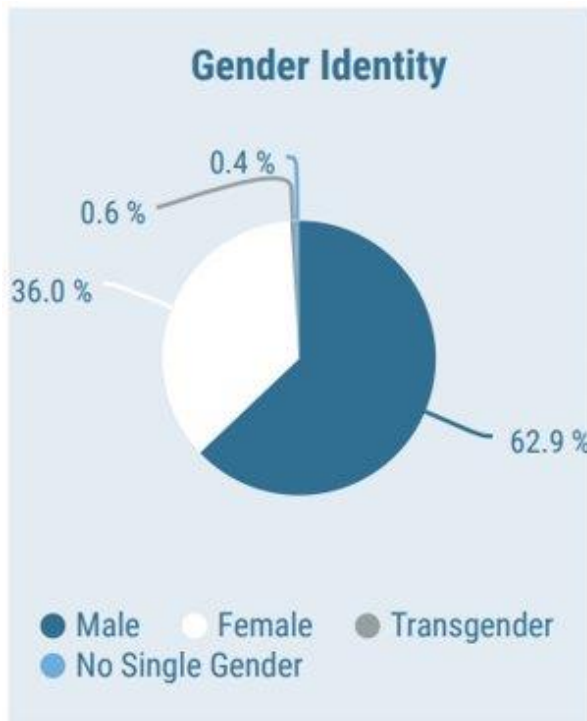
Were Enrolled in Sheltered Services in Oakland



2,612 Individuals

Were Enrolled in Sheltered Services in Alameda County

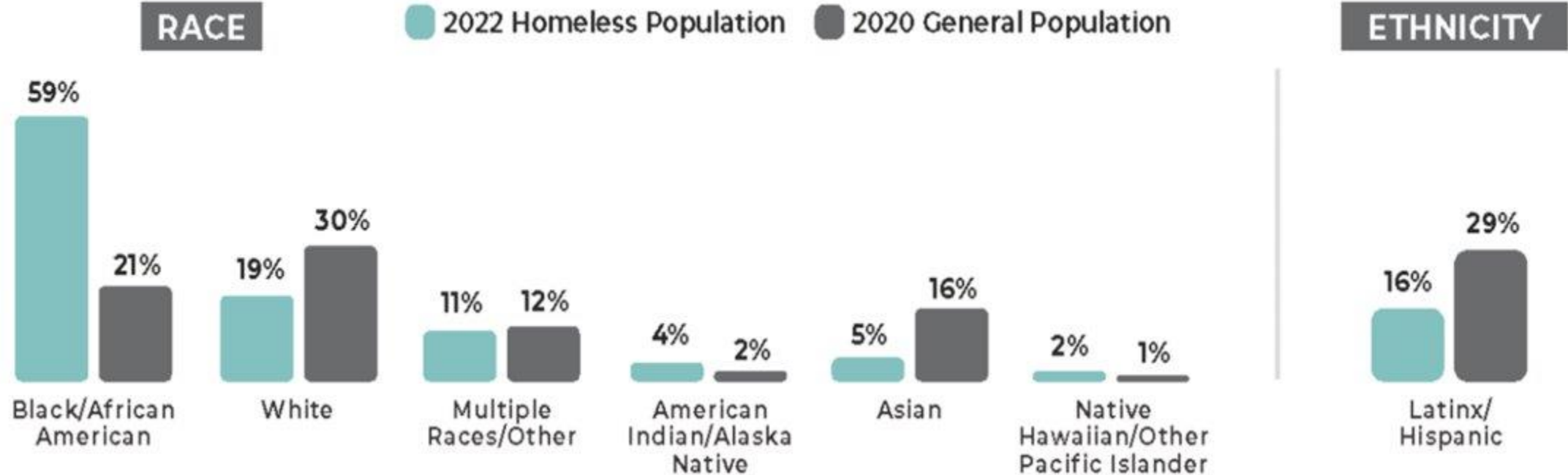
66% of *sheltered* individuals in Alameda County Live in Oakland



Oakland's Unhoused Population

Our collective equity goal: reduce racial disparities in homelessness

RACE AND ETHNICITY COMPARED TO GENERAL POPULATION



Alameda County's Mortality Rate Data

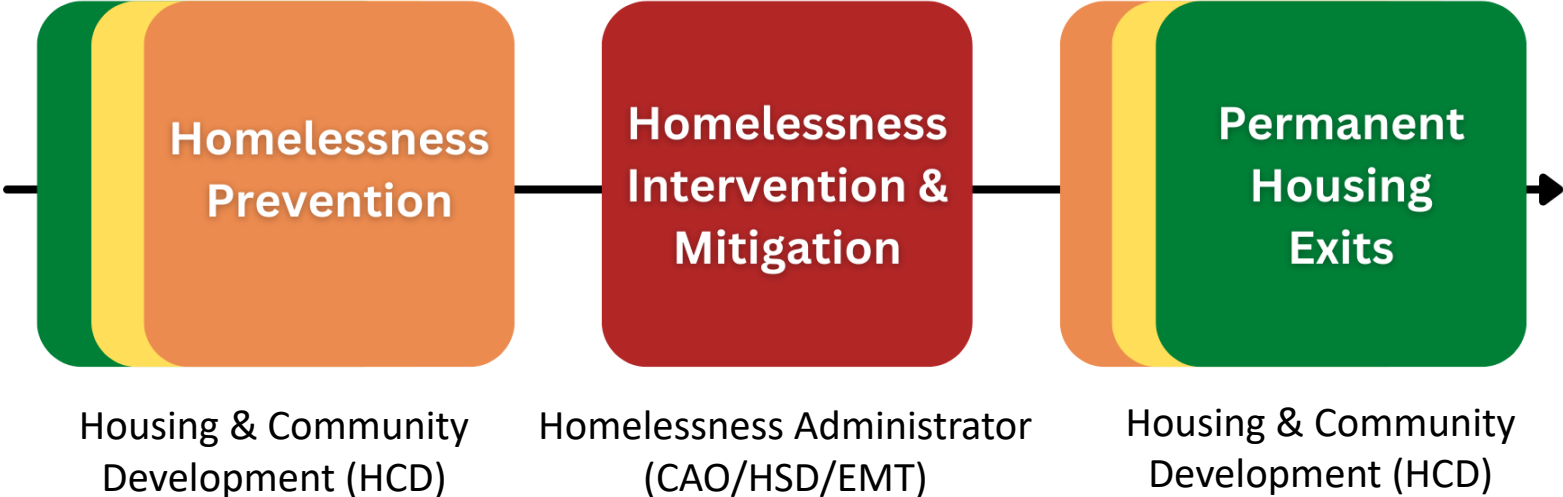
Homeless Deaths by Region of Last Residence

Year	Berkeley/ Albany	Oakland/ Emeryville	Mid-County: Hayward, Alameda, San Leandro, San Lorenzo, Castro Valley	South County: Fremont, Newark, Union City	Tri-Valley: Dublin, Pleasanton, Livermore
2018	19	102	49	16	9
2019	18	141	55	18	14
2020	25	215	84	26	17
2021	24	208	55	31	15
Total	86	666	243	91	55

Oakland's Homelessness Service Spectrum

Roles & Responsibilities

Which City Departments are involved in addressing homelessness?



Oakland's Homelessness Services: Intervention



STABILIZE

Oakland's proactive intervention strategy is moving people from the streets and encampments to innovative programs like community cabins and Safe RV parking sites, and from the traditional shelter model to rapid rehousing programs

- Encampment Management (EMT)
- Services & stabilization (HSD)



Guiding Policies

City Encampment Activities Are Guided by:

- 2020 Encampment Management Policy – 88341 C.M.S.
- Martin v. Boise – 9th Circuit Court Decision
- Miralle Settlement
- Emergency Shelter Ordinance
- CDC Guidance
- Relevant State, Local, and Federal laws
- Other Department Operational Policies

2022 PIT

Home Together 2026

Centering Equity in The Design of Homelessness Systems

Alameda County CoC

Oakland's Homelessness Services: Intervention



Wood St. Encampment, courtesy of Monterey Herald

ENCAMPMENT MANAGEMENT POLICY

The purpose of this policy is to assist all Oaklanders, sheltered and unsheltered, and to manage the adverse impacts of homeless encampments by balancing the interests of all residents (i.e. unhoused, housed, business community), focusing encampment actions on mitigating negative outcomes related to public health and safety for those most harmed by these conditions. This includes implementing managed encampments, where possible, to better manage the conditions on the streets.

88341 C.M.S.

Oakland's Homelessness Services: Intervention

ENCAMPMENT MANAGEMENT POLICY -

This policy aims to:

1. **Designate** high-sensitivity areas, where unmanaged encampments cause unreasonably high levels of health and safety impacts due to the nature of the location;
2. **Designate** low-sensitivity areas, where enforcement will not be prioritized.
3. **Establish** findings that will prompt EMT intervention;
4. **Provide** guidance on addressing unreasonable health and safety risks and promote voluntary compliance;
5. **Serve as a pathway** to connect unhoused residents to shelter and services from the encampments prior and during actions;
6. **Promote** strategies centered in principles of equity and harm reduction to address non-compliance.



HIGH SENSITIVITY AREAS


Locations where the health and safety impacts of homeless encampments are heightened due to the potential degradation of critical infrastructure, and/or the presence of significant obstructions to residences, businesses, emergency routes and rights-of-way.

High Sensitivity Areas

- All vehicular traffic lanes, bike lanes, and at least 1 side of the street sidewalks must comply with American Disabilities Act (ADA) sidewalk and street requirements and must allow for passage of emergency vehicles.
- Locations designated as High Fire Severity Zones (HFSZ) by the Oakland Fire Department and/or CalFIRE.
- Within 150 feet of an elementary, middle, pre-school or childcare center
- Within 100 feet of a high school
- Within 50 feet of a protected waterway as established by any governing body.
- Within 50 feet of a residence or "retail" business, main entrance or emergency exits, including places of worship
- Within 50 feet of a city park, public land that has child's playground, structure, or tot lot or recreation center in which children participate in city-sponsored programs/classes*
- Areas directly adjacent (within 25 feet) to emergency shelter interventions.



LOW
SENSITIVITY
AREAS



All other areas not
included in High
Sensitivity criteria

Low Sensitivity Compliance

- Shall be limited to one side of the street.
- Shall not impede vehicle, bike, or pedestrian traffic (on at least one side of the street).
- Shall not impede Americans with Disabilities Act (ADA)-compliant access points, consistent with goal of limiting encampments to one side of the street.
- Shall not impede emergency ingress/egress routes.
- Compliance with applicable & generally enforced state penal codes & local ordinances.
- Shall not exceed 12 X 12 square feet per person at all times.
- Area directly adjacent to a vehicle dwelling must remain clear at all times.
- No gray or black water dumping
- No illegal electrical taps.
- No storage of tires, gasoline, generators, propane tanks storage of tires, gasoline, generators, or propane tanks, or unsafe storage of combustible materials or accumulation of combustible waste.
- Structures, tents, and vehicle dwellings shall maintain not less than six (6) feet distance between one another.

Encampment Management Interventions

- **Health & Hygiene Intervention** (regular waste collection services, placement of portable toilets / hand washing stations, increased outreach services)
- **Deep Cleaning**
- **Partial Closure**
- **Full Closure**

EMP FINDINGS PUBLIC HEALTH

- Confirmed cases of or exposure to infectious diseases
- Excessive animal or vermin vector hazards
- Presence of biological vector hazard
- Notice of public health emergency at an encampment as declared by a county, state, or federal public health entity
- Need for encampment decompression as identified by public health officials
- Location of encampment in a public recreational area, or shared facility should such facility be repurposed

EMP FINDINGS PUBLIC SAFETY

- Location of encampment impedes the right-of-way, lane of traffic, bike lane, or ADA access;
- Location of encampment such that First Responders (including, but not limited to, Fire, Police, and any health care workers), are impeded in performing their essential government functions;
- Pervasive criminal activity;
- Damage to essential infrastructure (e.g., reservoirs, bridges, public utilities, drainage and sewer systems);
- Excessive amounts of waste/garbage/debris as determined by OPW.
- Proximity of encampment to objective dangers (e.g., edge of a steep slope, on an in-use train track, in a vehicular lane of traffic).
- Excessive fire hazards and/or calls for service as determined by OFD.
- Unpermitted outside fires burning less than 30 feet away from any structure, tent, or vehicle.
- Presence of open electrical splices or illegal wiring.
- Roadway does not have 20' unobstructed width for Fire Apparatus Access
- Fire hydrant obstructions with less than three (3) feet radial clearance around hydrants.
- Storage of tires, gasoline, or propane tanks, and unsafe storage of combustible materials or accumulation of combustible waste

Encampment Policy Intersections

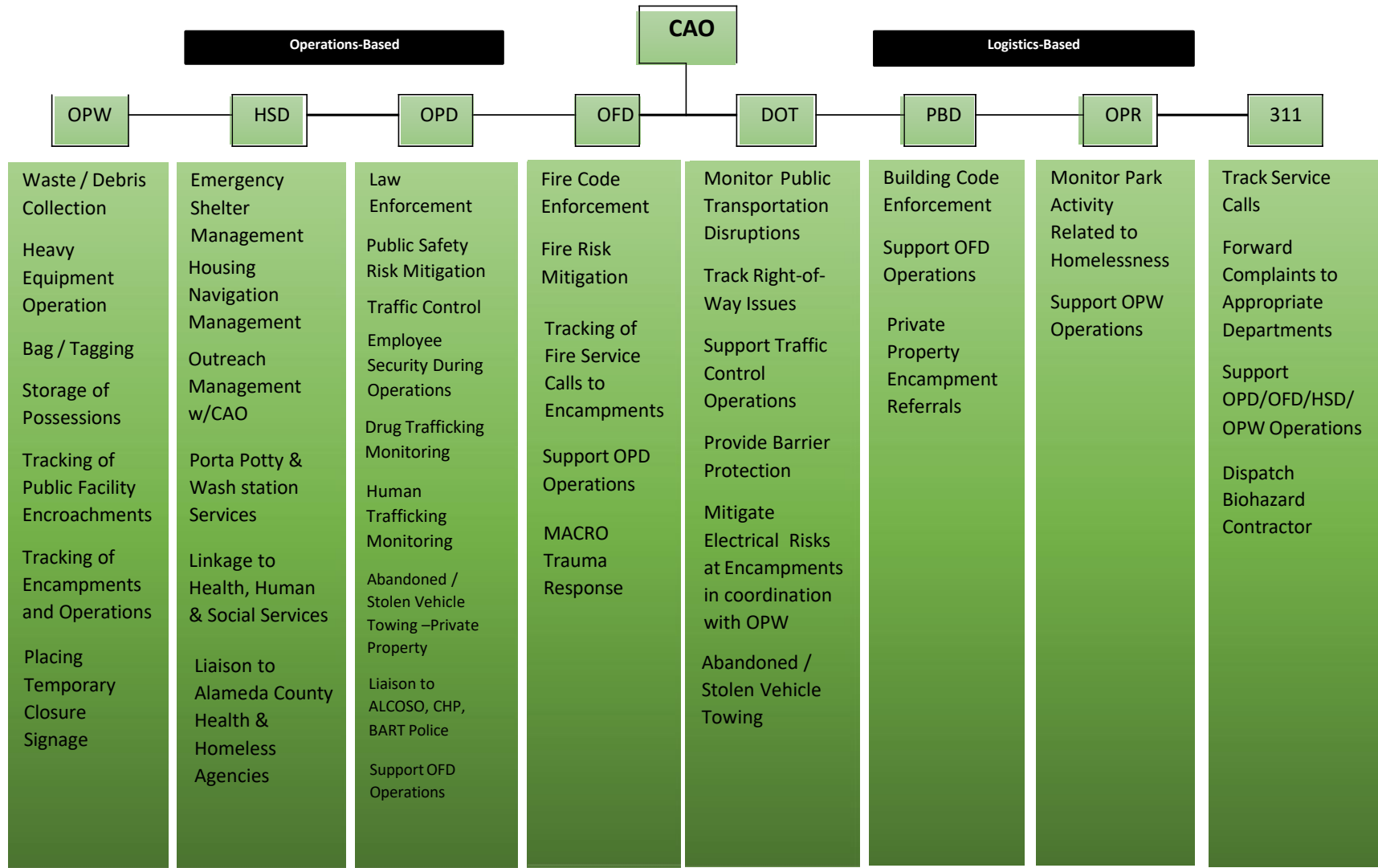
- ❑ Martin v. Boise – Requires offer of adequate shelter, prohibits arrest for sitting, lying, and sleeping
- ❑ Miralle Settlement Agreement – Requires changes to due process areas for notification and support for personal property rights, and operational considerations and requirements
- ❑ Relevant CDC Guidance
- ❑ Emergency Shelter Ordinance – Provides authorization to expedite contracting for services to support homelessness response
- ❑ Relevant Federal, State, and Local Health and Safety laws that require the City to mitigate and abate conditions or violations.
- ❑ Mandated Department SOPs, Labor agreements, etc.

Encampment Operations

Encampment Management Team Deployment

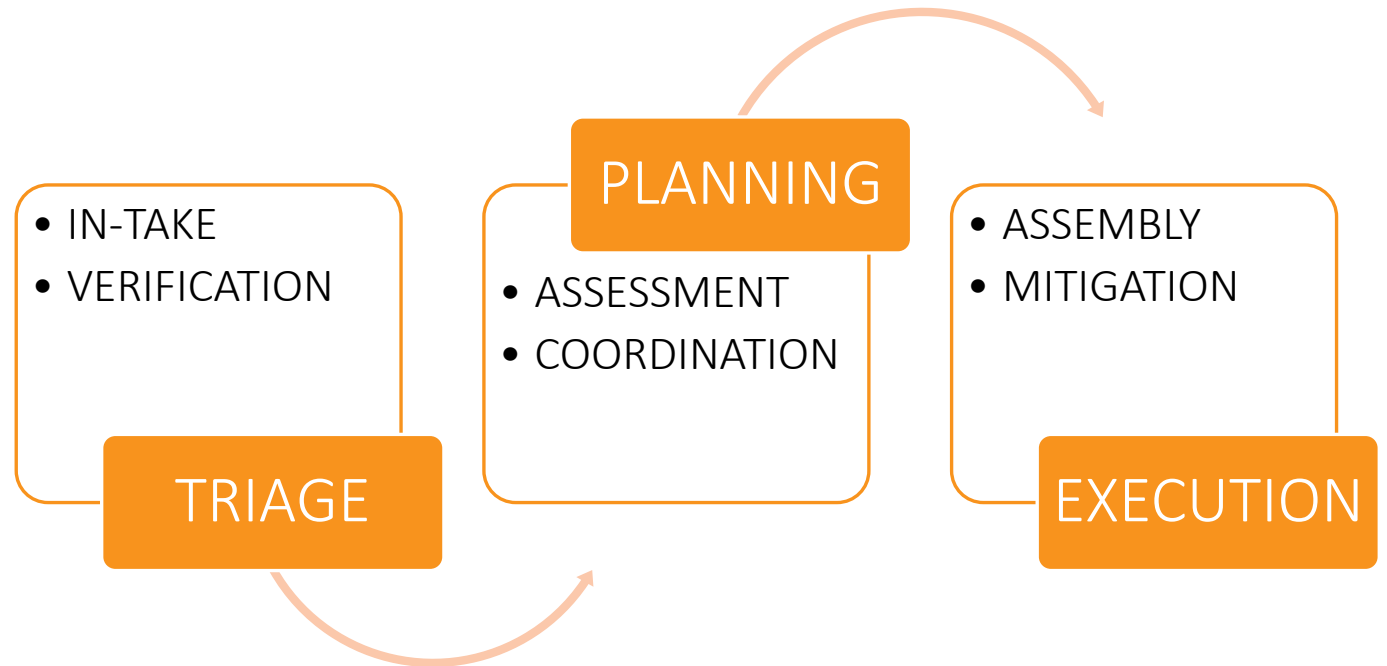


Encampment Management Team Roles and Responsibilities



Encampment Operations

PHASES OF WORK





Operational Assessment

- Verification of Reported Conditions
 - Encampment Census
 - Outreach - Matched Resources and HMIS
 - Available Shelter Beds
 - Documented Offers
 - Departmental Preparations
 - Severity
 - Noticing
-

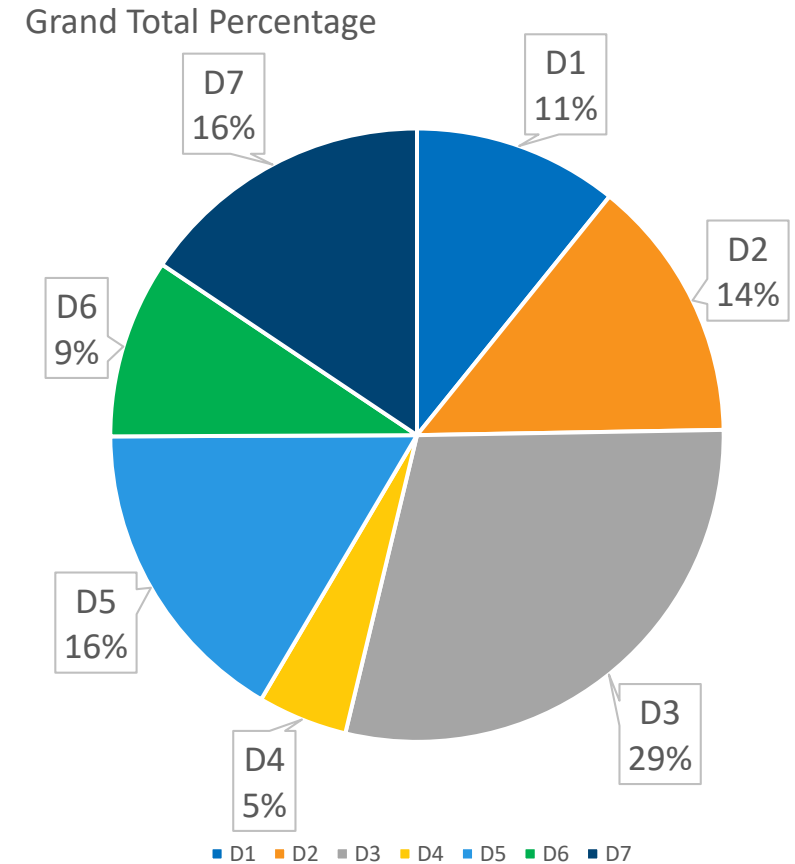
Total Number of Encampment Intervention Requests per Year

Year	2021	2022	Through May 2023
Requests	1,841	3,233	310*

* The EMT launched the integration of encampment reports in the CityWorks System January. Due to the ransomware issue systems reporting were inoperable.

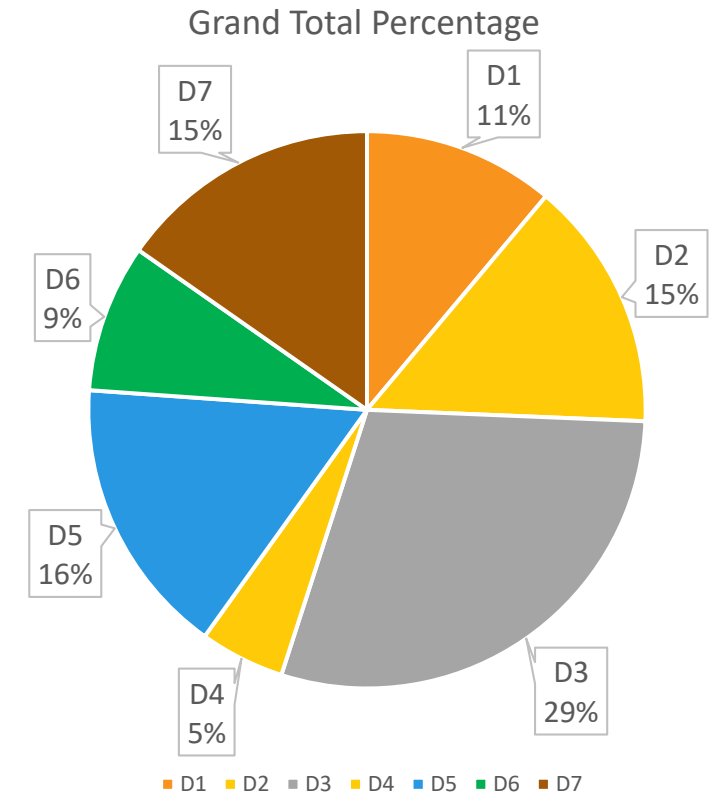
REPORTED ENCAMPMENTS CITYWIDE 2021 – to March 30, 2023 (Citizen Report)

Count by Location	District							Total
	D1	D2	D3	D4	D5	D6	D7	
Elements								
Mixed Clustered (Vehicles & Structures)	15	17	56	3	27	12	21	151
RV/ Vehicle Clustered	42	62	128	28	109	77	127	573
Tent Clustered	38	55	93	12	35	15	21	269
Unknown	33	31	67	13	24	8	16	192
Grand Total	128	165	344	56	195	112	185	<u>1185</u>

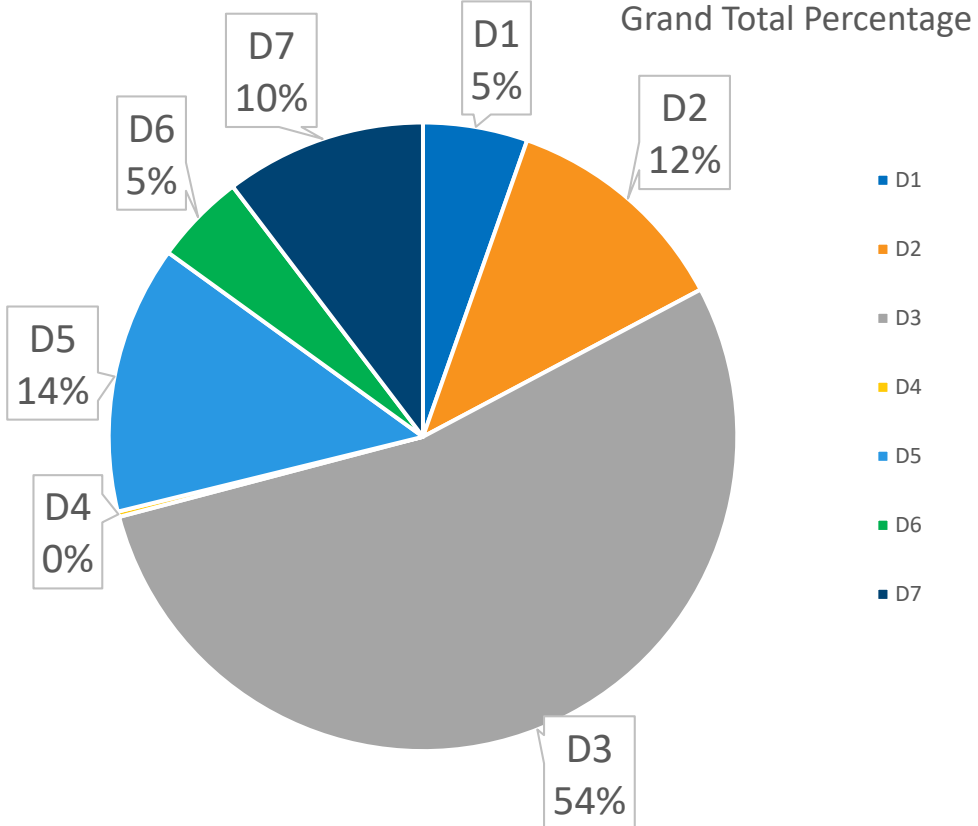
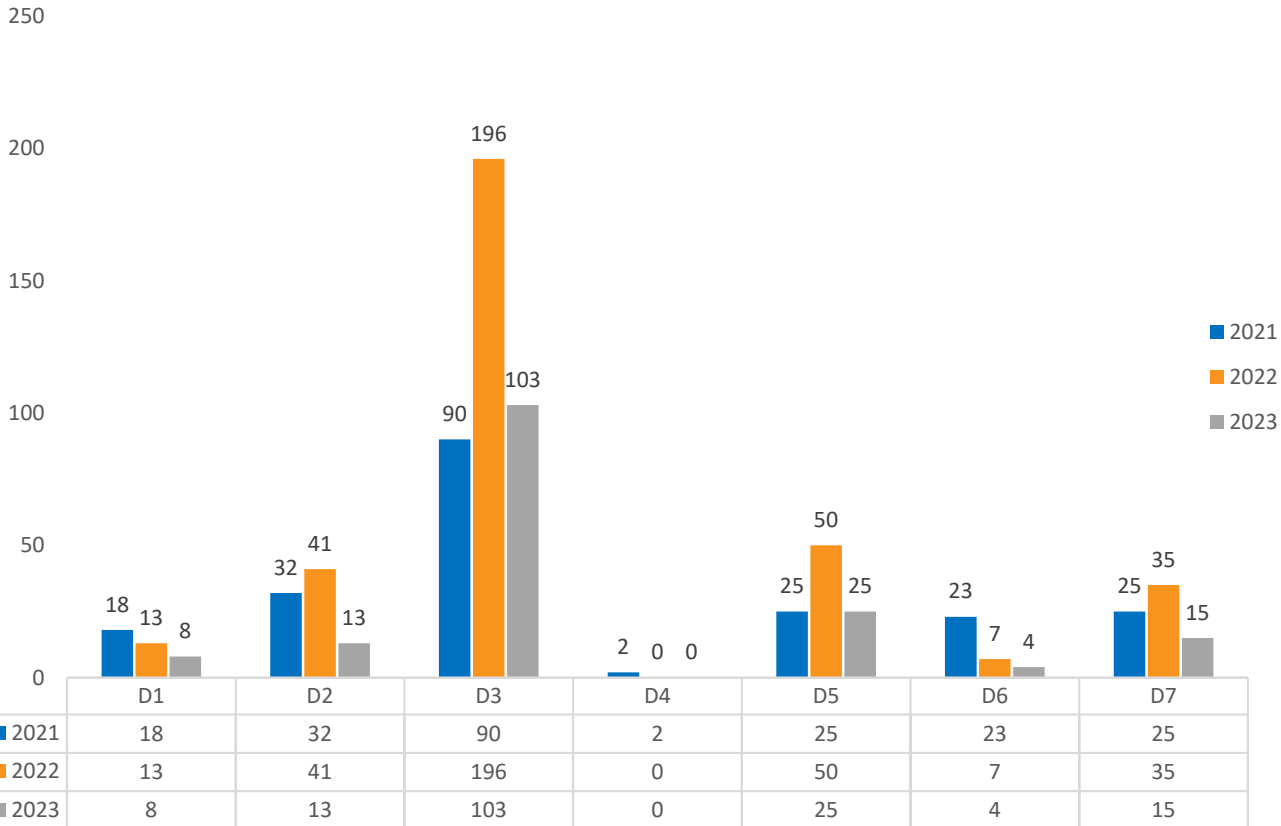


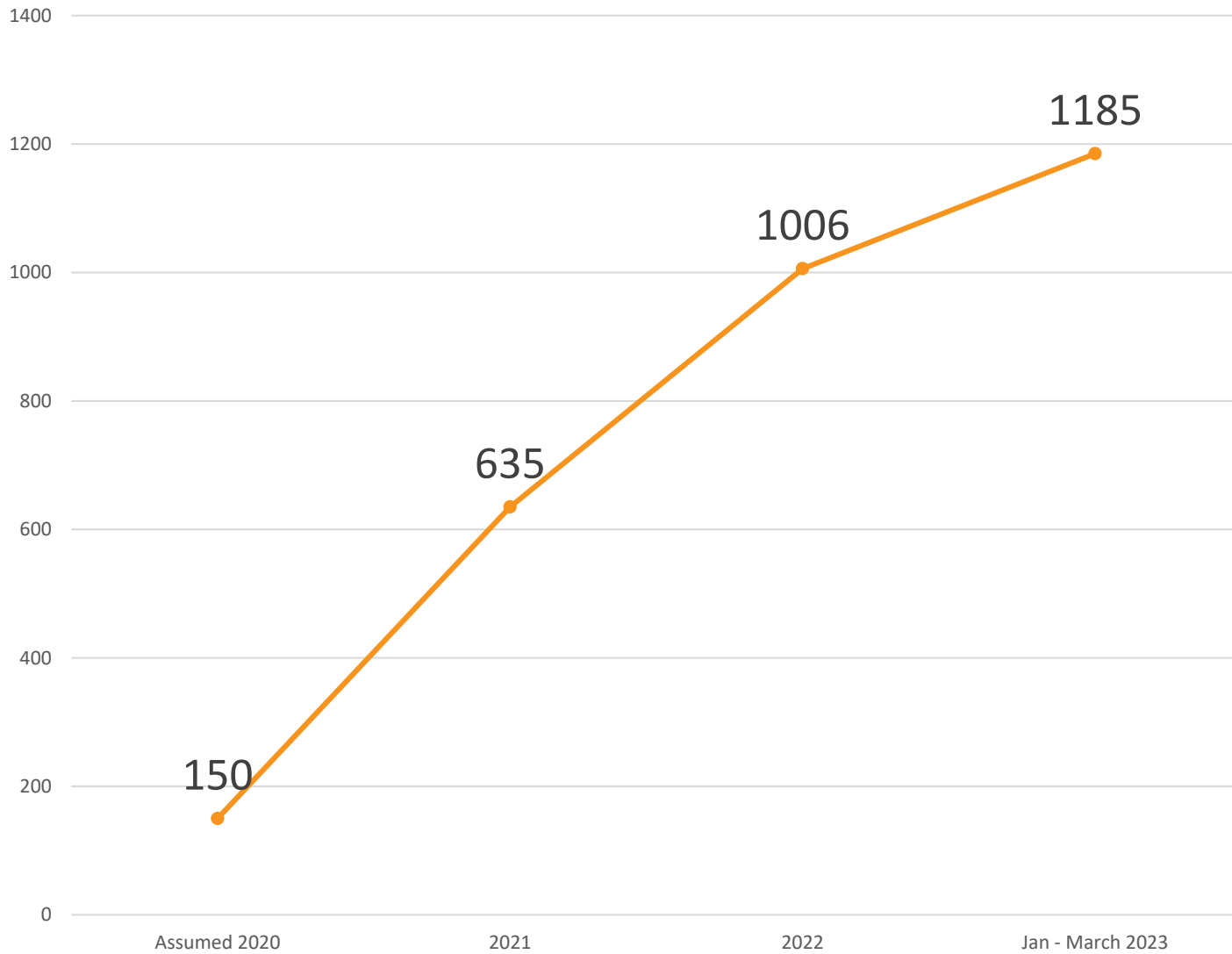
ENCAMPMENTS PER DISTRICT 2021 - MARCH 2023

Count of Location (ACTIVE ONLY)	District							
	D1	D2	D3	D4	D5	D6	D7	Grand Total
Elements								
Mixed Clustered (Vehicles & Structures)	11	15	43	3	21	12	16	121
RV/ Vehicle Clustered	38	51	115	24	88	58	103	477
Tent Clustered	28	44	72	9	31	8	14	206
Unknown	29	29	50	11	15	4	13	151
Grand Total	106	139	280	47	155	82	146	955




COMPLETED OPERATIONS PER DISTRICT JAN 2021 – JUNE 2023





REPORTED ENCAMPMENT GROWTH

Year	Number of Reported Encampments
Assumed 2020	150
2021	635
2022	1006
Jan - March 2023	1185



The number of operations completed since the policy launch, Jan 1, 2021 – June 30, 2023

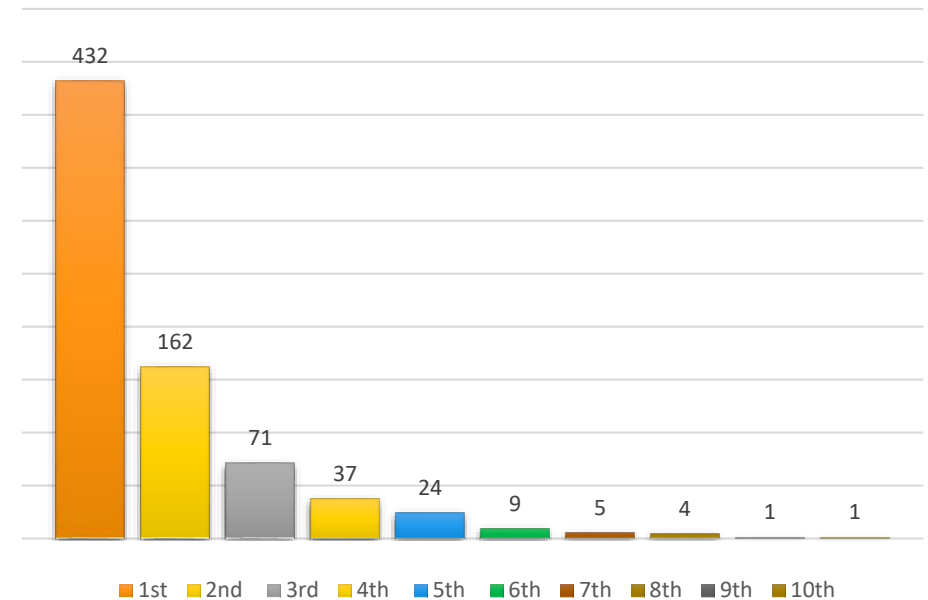
Row Labels	Count of Operations
2021	215
2022	342
2023 to June 30	168
Grand Total	725

Recurrence of EMT Operations 2021 – June 30, 2023


Operations Recurrence Rate

YEAR	1st	2nd	3rd	4th	5th	6th	7th	8th	9th	10th	Total
2021	165	40	11	2	0	0	0	0	0	0	218
2022	162	86	46	27	18	8	5	4	1	1	358
Jan - June 30, 2023	105	36	14	8	6	1	0	0	0	0	170
Total	432	162	71	37	24	9	5	4	1	1	746

Grand Total Trend



Operations Implementation



	Fiscal Year 2021-2022	Fiscal Year 2022-2023
Staffing		
OPW KOCB Support	\$1,200,979	\$1,200,979
OPW Painters - 2 (Graffiti Abatement)	\$100,765	\$100,765
HSD 2.0 FTE Case Manager	\$172,340	\$172,340
CAO Homelessness Administration Program Analyst II, Admin Assistant I Volunteer Coordinator	\$157,998	\$435,126
Operations		
Homelessness Administration Parks and sanitation	\$200,000	----
OPW Additional Trash	\$200,000	----
Sanitation Services	\$1,080,000	\$1,080,000
Program Support		
Funding for hotel support	\$400,000	----
Stipends for Commission on Homelessness Support	\$25,000	\$25,000

ENCAMPMENT
MANAGEMENT
INVESTMENTS
TO DATE

COST OF ENCAMPMENT
 MANAGEMENT
 PROGRAM EXPANSIONS
 2021 AUDIT -
 INVESTMENTS TO DATE

	Fiscal Year 2021- 2022	Fiscal Year 2022- 2023
Shelter Expansion	Wood St. Safe Parking - 40	Beach Street Safe Parking – 18 RVs
	E.12th - 75 shelters	Wood Street Shelter – 100
	3rd and Peralta – 40 shelters	66th Avenue Safe Parking - 103
	Lao Family – 43 Hotel Rooms	Lao Family – 50 Hotel Rooms



Challenges

- The **City lacks sufficient housing and shelter for the unsheltered population**. As such, the low inventories of shelter and housing and the higher numbers of homeless directly impact the expanse of outreach activities, conduct of the shelter offer process, and ability to close more encampments.
 - **Encampment Recurrence patterns are increasing**. Recurrence is more likely in areas with certain geographic elements such as areas in close proximity to state property lines, vacant parcels, within parks, freeway underpasses, and industrial corridors with sparse business activity as examples.
 - Encampment locations are seeing **higher levels of criminal activity** (drug dealing, violence, shooting, stolen and chopped up abandoned vehicles) which are furthering harm to encampment residents, businesses and housed neighbors.
 - **Encampment support is has not scaled to meet the increased number of homelessness and encampments**.
 - Oakland's Homelessness continues to be disproportionately African American. Unhoused residents need additional supports to transition from encampments to shelter.
-

Reference

Slide 4-7 [Oakland-PIT-2022-Infographic-Report.pdf](#)
([oaklandside.org](#))

Slide 8 [Alameda County Homeless Mortality - ALAMEDA COUNTY HEALTH CARE FOR THE HOMELESS](#) ([achch.org](#))

Slide 12 -21 [Encampment-Management-Policy-88341-CMS.pdf](#)
([cao-94612.s3.amazonaws.com](#))

Thank you!

Contact:

City Administrator's Office Homelessness Division

Homelessness Administrator/Assistant City Administrator LaTonda
Simmons

Phone: 510-207-1221

Email: homelessness@oaklandca.gov

<https://www.oaklandca.gov/boards-commissions/commission-on-homelessness>