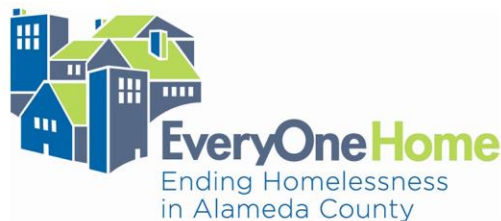


# Welcome to EveryOne Home

*Presented by: Chelsea Andrews, Executive Director*



EveryOne deserves a place they can call Home!



# EveryOne Home's Mission

EveryOne Home is a “**collective impact initiative**” founded in 2007 to facilitate the implementation of Alameda County plan to end homelessness, adopted by the Board of Supervisors and all 14 cities.

EveryOne Home’s **brings together key stakeholders** to work together on policies and harness resources to end and prevent homelessness in Alameda County.



# Why was EOH created as a “Collective Impact initiative”?

"Collective Impact" is the commitment of a group of actors from different sectors to a common agenda for solving a specific social problem, using a structured form of collaboration.

## **Benefits:**

- Collective Community Voice, focused on including individuals with lived experience
- Influence ‘political will’ for additional funding for homelessness, creation of affordable housing and subsidies, and policy reforms
- Create collective Community Plan to end homelessness

# HUD Continuum of Care 5 Key Components

(1) Coordinate the implementation of a **housing and service system thru Coordinated Entry**, which encompasses:

- Outreach, engagement, and assessment;
- Shelter, housing, and supportive services; and
- Prevention strategies

(2) Plan for and conduct, at least biennially, a **point-in-time count** of homeless persons

(3) Conduct an **annual gaps analysis**

(4) **Establish and monitor appropriate performance targets**

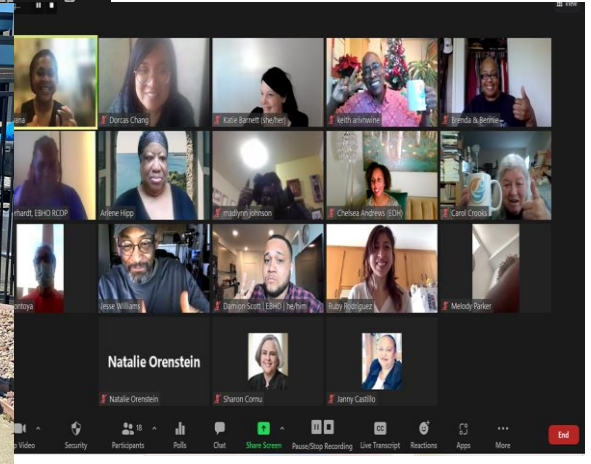
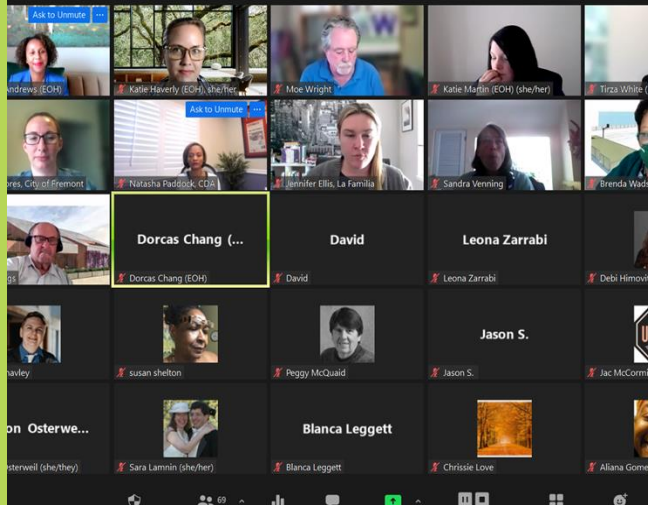
(5) Designate a **Homeless Management Information System**





# WE are EveryOne Home!

Members of EveryOne Home are **Members of the Collective impact initiative** and the **HUD designated Continuum of Care**



# Centering Racial Equity in Homeless System Design



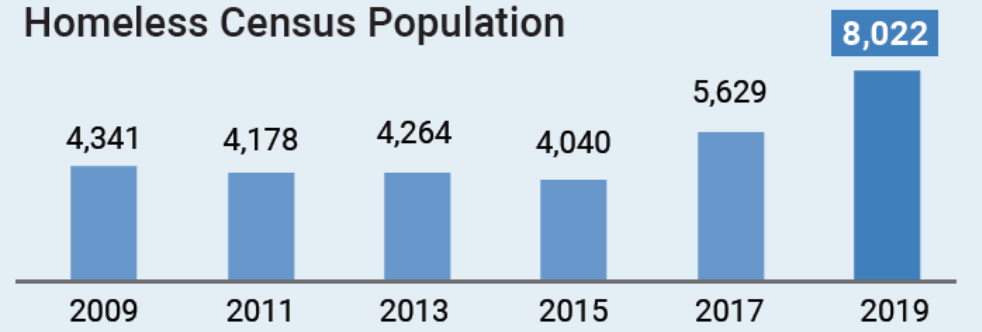
**EveryOneHome**  
Ending Homelessness  
in Alameda County

# Homelessness is a crisis in Alameda County, California



Between 2017 and 2019 the number of people experiencing homelessness in Alameda County increased by 43%.

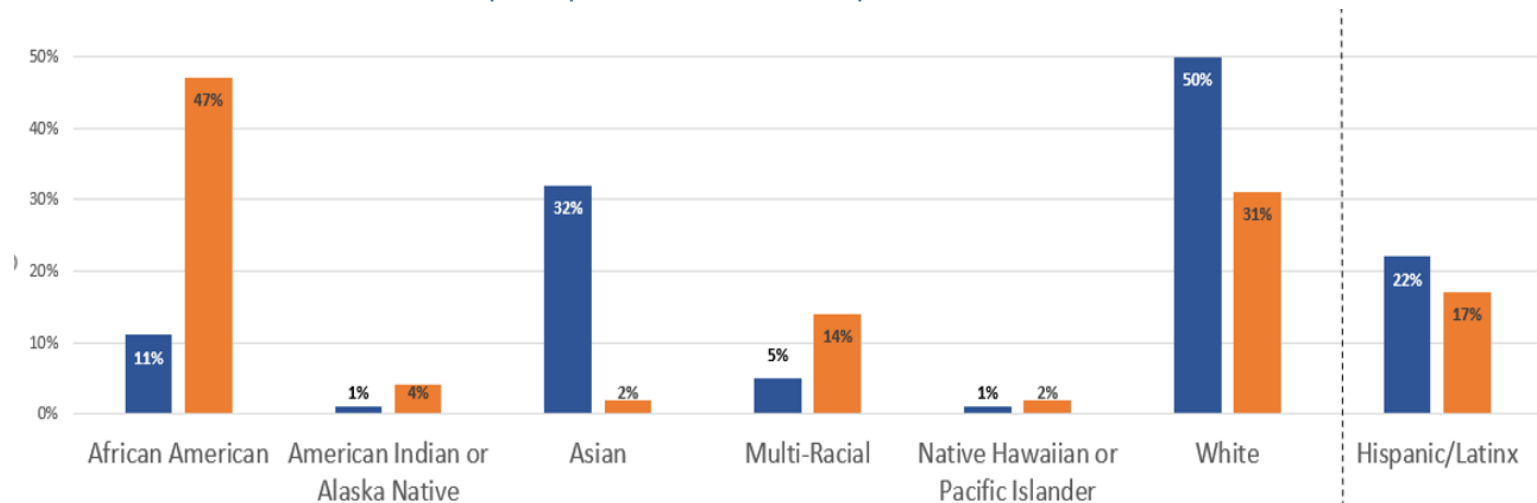
Homeless Census Population





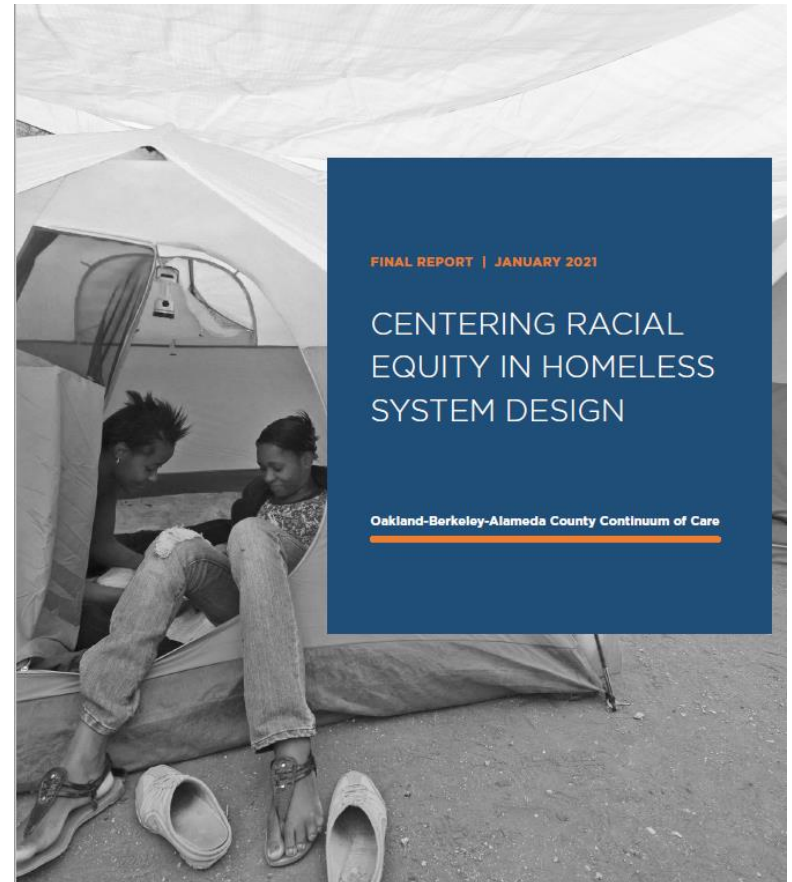
# The housing market is not the full story.

- Homelessness disproportionately impacts people of color, (**blue** is the general population, **orange** is the homeless population)
- Black and Native American people are over-represented in the inflow into homelessness
- Black and Native American people are over-represented in returns to homelessness



■ Alameda County General Population (U.S. Census Bureau, 2010-2018 QuickFacts) ■ Homeless Population (PIT Count, 2019)

# Centering Racial Equity in Homeless System Design



# Report Key “Take-Aways”

- Homelessness is rapidly increasing in our community and data shows that **people experiencing homelessness are disproportionately Black, Indigenous and Multi-racial.**
- **Historic and structural racism** in various systems disproportionately **pushes Black and Indigenous people into homelessness** and makes it more difficult to find and retain housing.
- Details the **targeted solutions needed** using best practices and data gathered from administrative sources, people with lived experience, homeless system providers and funders.
- **Transforms our system around a shared commitment to equity and reducing disparities** by modeling programs to overcome the structural barriers encountered by homeless people who are disproportionately Black, Indigenous, and Multi-Racial.

# How we infused Racial Equity in our System

## *Home Together Plan 2026:*

Add New Resources to our Homeless System

- **Add NEW Shallow Subsidies:**

- Create ongoing (rather than time limited or one time) homelessness prevention and re-housing supports in order to close racial disparities in returns to homelessness

- **Add NEW Dedicated Affordable Housing:**

- Create permanent housing opportunities for formerly homeless people throughout Alameda County to build upon and strengthen existing social and economic supports

Revise Governance

- **Increased the voice and decision-making power** of people with **lived expertise** of homelessness who are disproportionately **Black and Native American**.

Adopt Racial Equity Lens to Policy Decisions & Resources

- Incorporated race equity **data tracking, transparency and reporting**
- **Updated Coordinated Entry** to ensure equity
- Created **policies to ensure equity** with the deployment of resources
- Added **race equity and lived experience factors to local contract competition**
- **Targeted resources** to address disparities



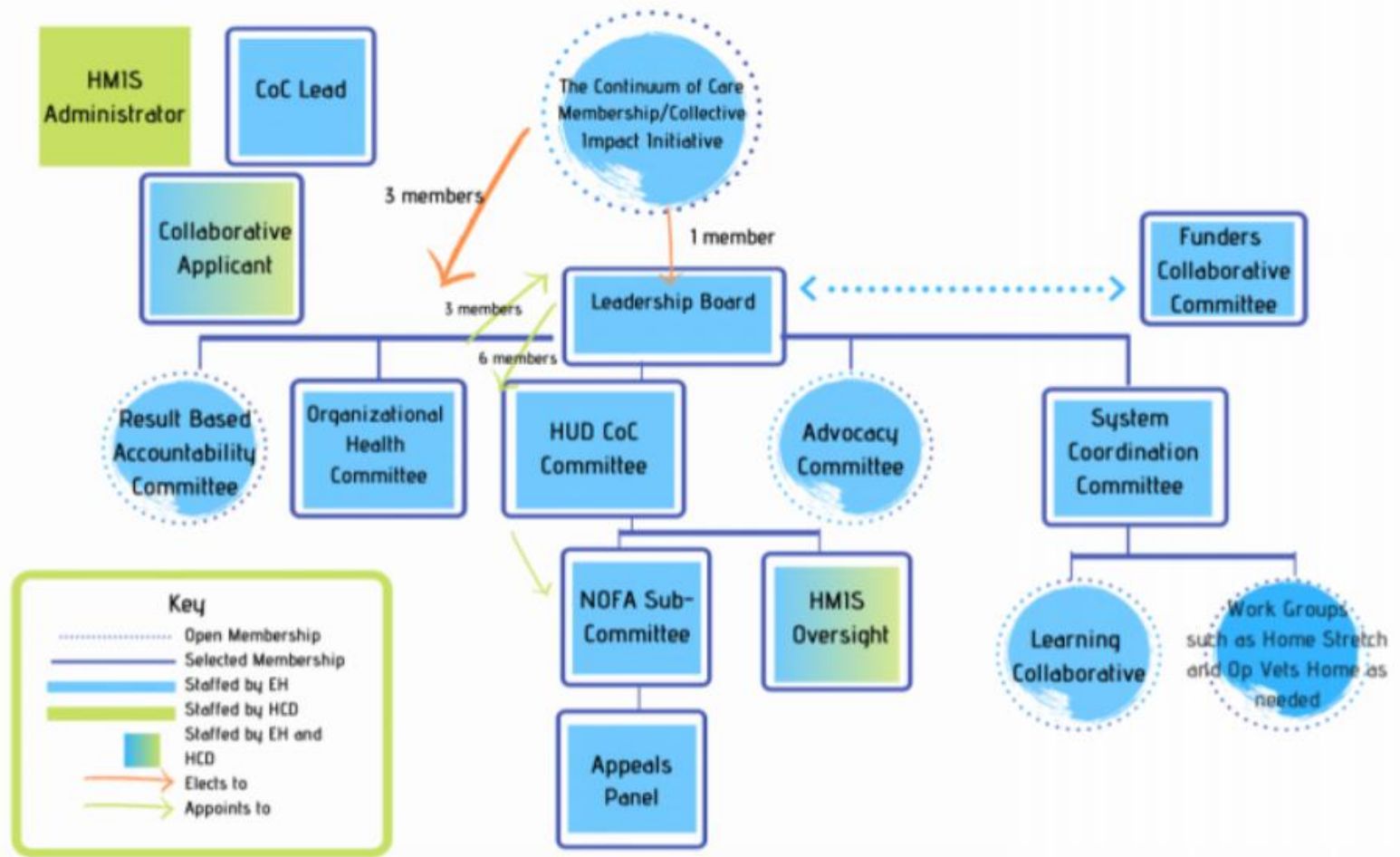


# EveryOne Home Governance Updates

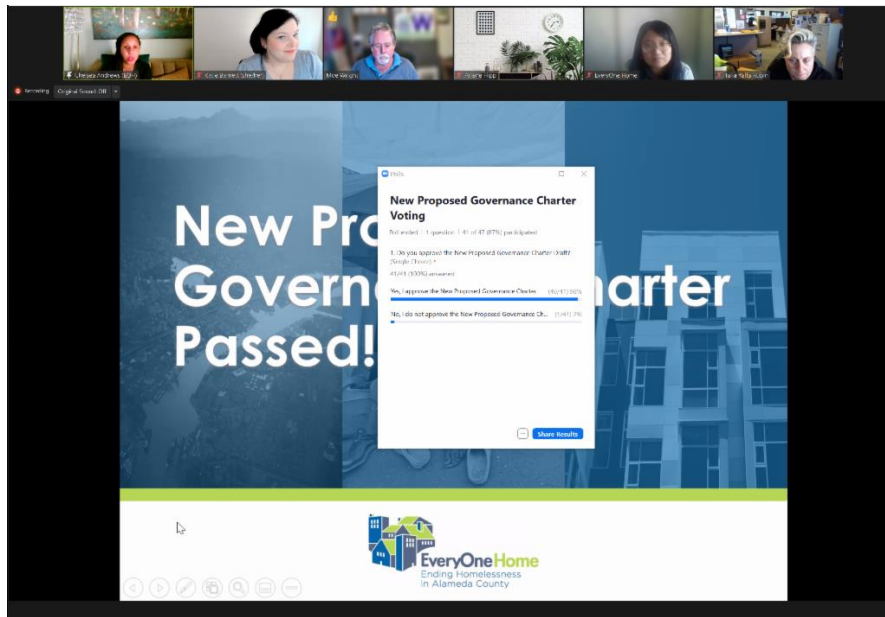


**EveryOneHome**  
Ending Homelessness  
in Alameda County

# PREVIOUS GOVERNANCE STRUCTURE



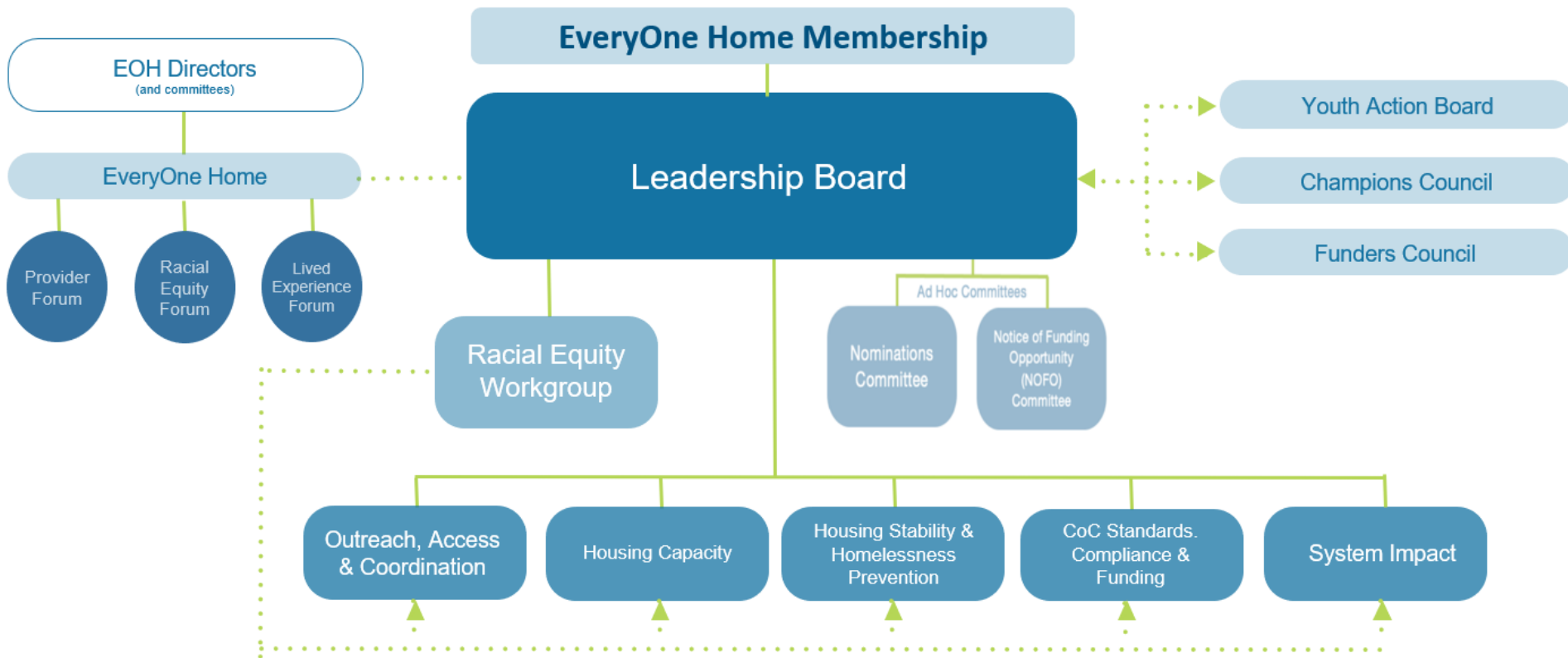
# February 2<sup>nd</sup> 2022 Community Meeting



- The Leadership Board of EveryOne Home recommended and moved that the EveryOne Home Community adopt the **updated Governance charter**
- Poll Results:
  - **98% Approve**

# New Governance Structure

## COLLECTIVE IMPACT MODEL



### Key

- Line of Authority
- ... Line of Influence and Communication
- ▶ Directional Flow of Influence/Communication



# New Leadership Board Composition

1. Person with **lived expertise (1/3 of Board; elected by Nomination Committee)**
2. Person with lived expertise
3. Person with lived expertise
4. Person with lived expertise
5. Person with lived expertise
6. Person with lived expertise
7. Person with lived expertise
8. Person with lived expertise (**Youth Action Board Seat**)
9. **City of Oakland** (appointed seat)
10. **City of Berkeley** (represents **Albany and Emeryville, Piedmont** appointed seat)
11. City from the **mid-county region** (elected from Alameda County Conference of Mayors)
12. City from the **south-county region** (elected from Alameda County Conference of Mayors)
13. City from the **east-county region** (elected from Alameda County Conferences of Mayors)
14. Alameda County **Health Care Services Agency, Office of Homeless Care and Coordination** Director (appointed seat)
15. Alameda County **Social Services Agency** (appointed seat)
16. Alameda County **Housing and Community Development** (represents unincorporated areas, appointed seat)
17. Alameda County **Probation** (appointed seat)
18. **Public Housing Authority** (elected from membership)
19. Representative from **nonprofit affordable housing development** (elected from membership)
20. Non-profit **homeless service providers** (4 seats, Nomination Committee)
21. Non-profit homeless service providers
22. Non-profit homeless service providers
23. Non-profit homeless service providers
24. **Advocacy and/or citizen** (elected from membership)
25. **Policy advocacy or affordable housing advocacy organization** (elected from membership)
26. Chair or co-chair from **Racial Equity Workgroup** (appointed seat)
27. **Chairs of the Committees**, if different than those serving on the Leadership Board (appointed seat)





# Diverse Representation Benchmarks

## Lived Experience Benchmark

- People with lived experience would makeup **1/3 of the membership seats available**
- Targeted outreach would be performed to meet this benchmark

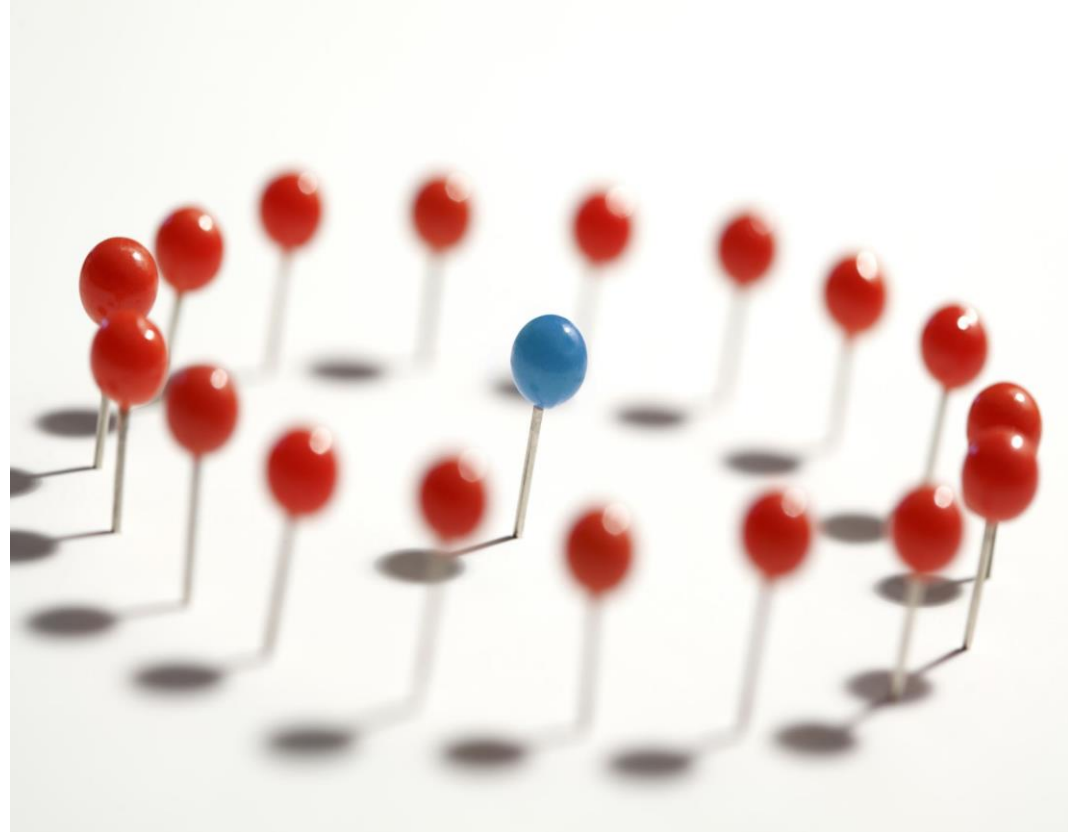
## Racial Diversity Benchmark

- The biennial **Point-In-Time (PIT) Count** will determine the benchmarks for recruiting **People of Color and Black/African Americans**
- Based upon 2019 data, 65% of the available seats will be filled by People of Color and Black/ African Americans

# Leadership Board

## Purpose/Role

- **Sets the vision, strategic direction and collective goals** for the entire homelessness response system
- **Delegates** work to committees and workgroups
- Holds committees and workgroups **accountable**
- **Serves as the HUD Continuum of Care Board** and assures compliance with HUD Continuum of Care regulations and requirements



# Outreach, Access and Coordination

## Purpose/Role

- Will **coordinate, monitor, and improve the quality and effectiveness** of outreach through **Coordinated Entry** and other services that connect people to the homelessness response system
- Ensure that referrals are **tailored to individual needs**
- Ensure that the system offers **welcoming and effective points of engagement**





# CoC Standards, Compliance and Funding

## Purpose/Role

- Secure **HUD and CoC-specific funding**
- **Monitor programmatic compliance** with HUD and CoC-specific requirements
- **Coordinate, monitor, and implement quality improvement** of HUD CoC/ESG-funded programs and HMIS
- **Design, operate, and implement a collaborative process** for submitting the CoC application to HUD (i.e., Notice of Funding Availability)



# System Impact

## Purpose/Role

- Make sure the **system helps people exit homelessness and become rehoused quickly**
- Implement **system-level effectiveness activities**
  - **Identify system needs and gaps**
  - **Conduct system modeling**
  - **Monitors system performance and timeliness outcomes**
  - **Operates a HMIS system** in collaboration with HMIS Lead
- Recommends **methodology for Homeless Count**



# Housing Stability and Homelessness Prevention

## Purpose/Role

- Ensure that **people experiencing housing crises** can **obtain and maintain housing**
- Develop **strategies and collaborations** to prevent new homelessness
- **Collaborate, coordinate, and improve** the effectiveness of existing homelessness **prevention initiatives**
- **Plan proactively for funding** and expansion
- **Consult with local government recipients** on allocations of prevention funding



# Housing Capacity



## Purpose/Role

- **Manage and increase the supply of deeply affordable housing and subsidies** targeted to people experiencing housing crisis
- **Acquire funding** for affordable housing
- **Advocate** to target funding to housing dedicated to households at 10% or less of AMI
- **Track affordable housing pipeline**
- **Plan proactively for funding and expansion**



# Racial Equity Workgroup



| Develop and lead  | Assist  | Metrics   | Monitor  | Report  |
|---|---|---|--|---|
| <p>Develop and lead implementation of a racial equity action plan to guide the entire system's work on equity</p> | <p>Assist other committees in setting racial equity metrics and monitoring progress</p> | <p>Annually set a racial diversity representation metric for all boards, committees, and workgroups, based on the annual Point in Time count and approved by the Leadership Board</p> | <p>Monitor whether the Leadership Board and all other committees and workgroups are achieving and maintaining the racial diversity metric set each year;</p> | <p>Regularly report progress towards achieving goals outlined in the racial equity action plan to the Leadership Board and the wider CoC membership</p> |

# Proposed Transition Sequence

Transition Working Group seats the New Leadership Board and Racial Equity Working Group

New Leadership Board appoints the Nomination Committee members

Nomination Committee & Racial Equity Working Group recruits and recommends new EOH Committee members

EOH CoC membership votes to approve elected Leadership Board seats



# Emerging Leaders Launch!



2022

## HOMELESS ADVOCACY LEADERSHIP TRAINING

EveryOne Home is now recruiting individuals who have experienced homelessness and want to take their advocacy to the next level.

### LEARN ABOUT:

- EveryOne Home
- Racial Equity
- HUD Policies
- Strategic Communication
- Civic Engagement
- Community Organizing
- Public Boards & Commissions

**MARCH 1 - APRIL 5  
TUESDAYS**

**1:30 PM - 3:00 PM**

ALL SESSIONS HELD REMOTELY

### APPLY ONLINE:

[everyonehome.org/leaders](https://everyonehome.org/leaders)

**APPLICATIONS  
DUE FEBRUARY 17**

### QR CODE:

Aim your smartphone camera at the code to learn more online.



### WHAT IT IS

The Emerging Leaders Program is a 6 session, 6-week training course providing individuals with lived experience of homelessness the skills and knowledge to be an effective advocate, organizer, and community leader.

### HOW IT WORKS

- Each coalition is limited to 13 individuals
- All sessions will be held remotely
- Coalitions meet once a week for six weeks
- Compensation is \$25 per hour (totaling \$225)

### WHO IT'S FOR

Formerly and currently unhoused residents of Alameda County who are committed to ending homelessness and interested in having a critical, decision-making role on boards, committees and commissions.

No experience or education is necessary. **Adults of all ages are encouraged to apply.**

### MAKING IT HAPPEN

We are committed to making the Emerging Leaders Program as accessible as possible.

In addition to a \$25/hour stipend, resources are available to assist participants with specific support costs, such as childcare, access to technology, etc.

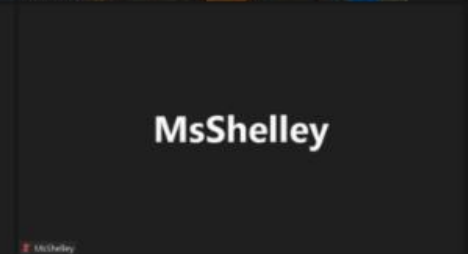
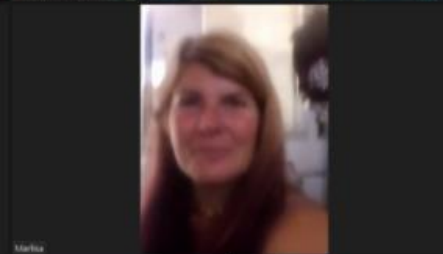
Questions? Contact [info@everyonehome.org](mailto:info@everyonehome.org)

EveryOne Home is fiscally sponsored by Texas Center, a 501(c)(3) non-profit organization.  
© 2021 EveryOne Home





# Emerging Leaders 1<sup>st</sup> Cohort



# Our First Cohort!



**11 participants representing various demographics across Alameda county**

## Race

White: (29%)  
Asian or Asian American: (21%)  
Native Hawaiian or Pacific Islander: (7%)  
Black, African American, or African: (29%)  
American Indian, Alaska Native, or Indigenous: (14%)

## Age

Youth (1-24): 2  
Adult (25-64): 6  
Senior (65+): 1

## Geographic residence

Berkeley: 2  
Hayward/Fremont: 1  
Livermore: 1  
Union City: 1  
Oakland: 6





EveryOne Counts!  
2022

# Point In Time Count Update



EveryOneHome  
Ending Homelessness  
in Alameda County

# What is the Point in Time (PIT) Count?

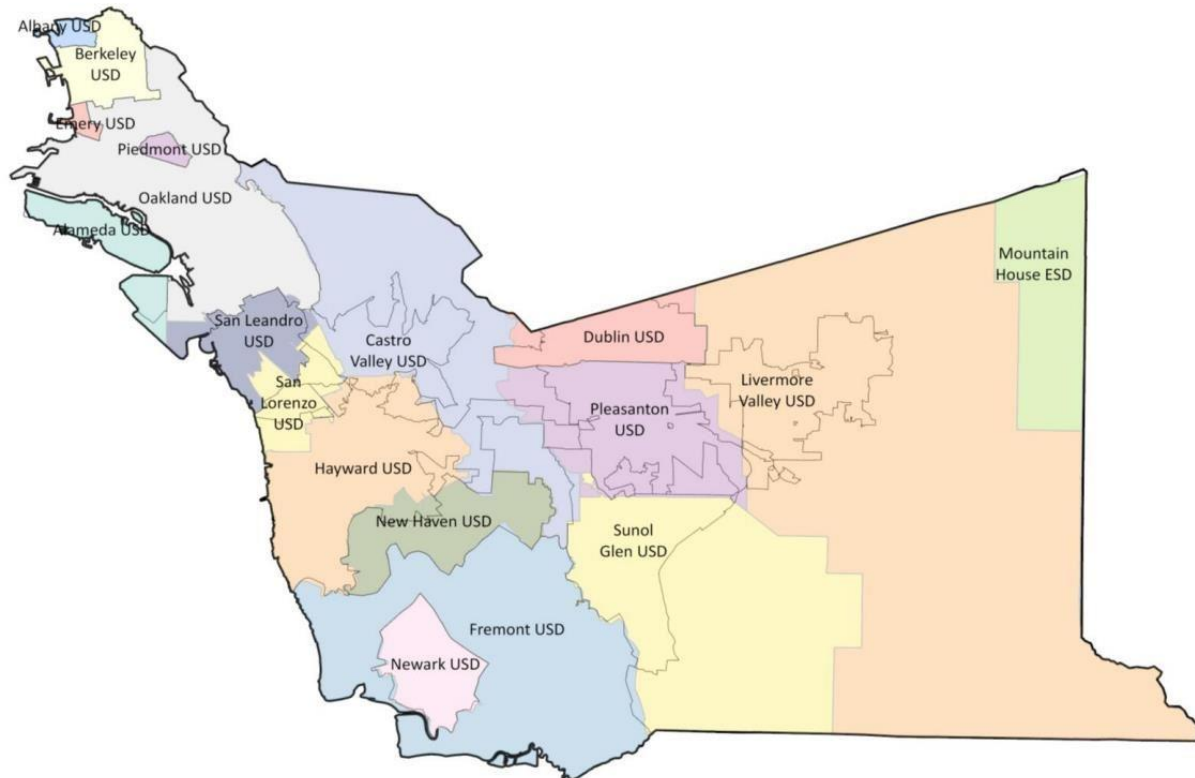
- A count and survey of sheltered and unsheltered people experiencing homelessness on a single night in January
- Required by HUD; informs funding that the county will receive for homeless services



# EveryOne Counts! 2022

## Successfully Completed 2/23/22!

- **Nearly 99% of all teams and volunteers** that signed up to participate in the Count, completed the Count! Volunteers stepped up to cover uncounted tracts the following morning.
  - *In past years, day of attrition was close to 20%.*







Supervisor David Haubert



Council Member  
Sophie Hahn



Mayor Libby Schaaf

Conducting the  
Count with Our  
Elected Officials



# PIT STOP For THE PIT COUNT!

To appreciate our volunteers this year for supporting our Point in Time Count, please visit one of our Grab and Go PIT STOP stations for some coffee and breakfast treats **AFTER** you finish your Count **Between 8AM-11AM.**

Thank you for ensuring this year that EveryOne Counts!

**BERKELEY PIT Stop:**  
First Congregational  
Church of Berkeley  
2345 Channing Way  
Berkeley

**OAKLAND PIT Stop:**  
Grove Shafter Park  
Martin Luther King Jr Way  
& 36th Street  
Oakland

**DUBLIN PIT Stop:**  
The Wave at Emerald Glen Park  
4201 Central Parkway  
Dublin

**HAYWARD PIT Stop:**  
First Presbyterian Church  
27287 Patrick Ave  
Hayward

**FREMONT PIT Stop:**  
40520 Paseo Padre Parkway  
Lake Elizabeth - Aqua Adventure Water Park  
Fremont



Masks Required:  
Volunteers will need to present the phone app used for data collection to receive the thank you breakfast.





# Fremont PIT Stop







# Dublin PIT Stop





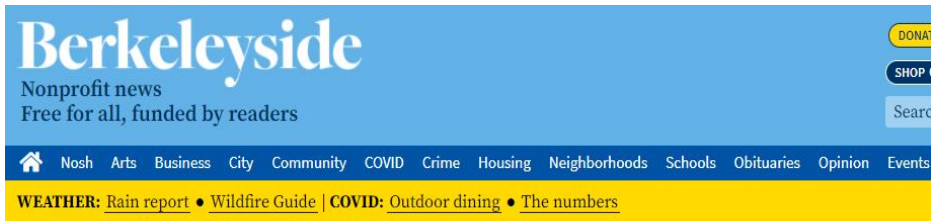


# Oakland PIT Stop





# Media Coverage



## HOUSING & DEVELOPMENT



By Natalie Orenstein,  
Oct. 27, 2021, 3:07 p.m.

*This story was first published on  
The Oaklandside.*

## Alameda County gears up for major homeless count

Canceled last year for COVID-19 safety concerns, this year's Point-in-Time assessment "counts more" than any before it, organizers say.



## HOUSING & HOMELESSNESS

## Alameda County gears up for major homeless count

Canceled last year for COVID-19 safety concerns, this year's Point-in-Time assessment "counts more" than any before it, organizers say.



by Natalie Orenstein  
October 26, 2021



Get the free Oakland newsletter. Local news  
delivered to your inbox twice a week

Enter your email

Sign up



HELP BUILD MORE ETHICAL  
OAKLAND GOVERNMENT!

BECOME A VOLUNTEER  
COMMISSIONER



Public Ethics | CITY OF  
Commission | OAKLAND

FIND OUT MORE

# Media Coverage

## Berkeleyside

### Volunteers conduct long-awaited homeless count in Berkeley, Oakland

The pandemic likely worsened the homelessness crisis, but a crucial population count was delayed until now.



### 'A humanitarian crisis:' Bay Area counts unsheltered homeless people after long delay



Sarah Ravani

Feb. 23, 2022 | Updated: Feb. 25, 2022 6:04 p.m.



Tents sit near Lake Merritt. Nearly 500 people in Alameda County conducted a count of homeless people for the first time in three years.  
Samantha Laury/The Chronicle

#### Fifth & Mission

The Chronicle's flag and subscribe on player below for t



## San Francisco Chronicle

Home



# Upcoming Key Dates for PIT 2022

**4/25** – Leadership Board and HUD CoC Committee to review and approve all data and narrative responses that will be submitted to HUD

**4/29** – Upload full HDX submission to HUD Including descriptive narratives

**5/16** – Proposed press conference to release all data to the public + Cities will receive infographic reports + data dashboard goes live on Alameda County Website

**6/30** – Full County and City Reports to be delivered by ASR



# Preview: Sample City PIT Report



## X City 2022 Point In Time Count Unsheltered & Sheltered Report



Every two years, during the last 10 days of January, communities across the country conduct comprehensive counts of people experiencing homelessness in order to measure the prevalence of homelessness in each local community. The 2022 Alameda County EveryOne Home Point-in-Time Count was a community-wide effort conducted on **January 25th, 2021**. Results presented below are for those individuals that were observed as being unsheltered or enrolled in sheltered services in X City on that day.



**80 Individuals**

Were observed as being unsheltered in X City.

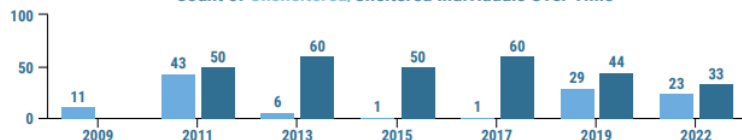


**8000 Individuals**

Were observed as being unsheltered in Alameda County.

1% of unsheltered Individuals in Alameda County Live in X City

Count of Unsheltered/Sheltered Individuals Over Time



Unsheltered Population by Location

|                       | Tent        | Car/Van     | RV          | Street/Outside | Abandoned Building |
|-----------------------|-------------|-------------|-------------|----------------|--------------------|
| <b>X City</b>         | 20%<br>(16) | 20%<br>(16) | 20%<br>(16) | 20%<br>(16)    | 20%<br>(16)        |
|                       |             |             |             |                |                    |
| <b>Alameda County</b> | 20%<br>(16) | 20%<br>(16) | 20%<br>(16) | 20%<br>(16)    | 20%<br>(16)        |

Questions? Please contact [data@everyhome.org](mailto:data@everyhome.org)

Page 1 of 2



## X City Sheltered & Unsheltered Report



**200 Individuals**

Were Enrolled in Sheltered Services in X City.

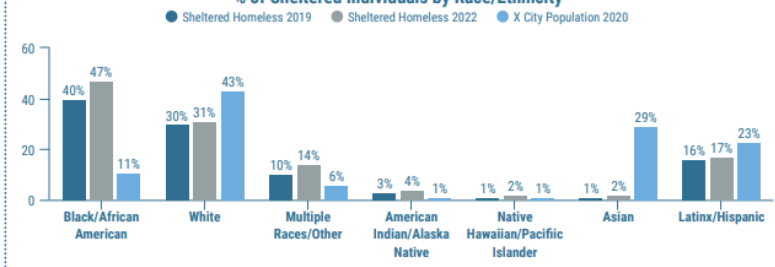


**2000 Individuals**

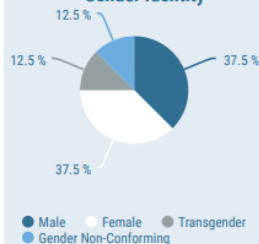
Were Enrolled in Sheltered Services in Alameda County.

1% of sheltered Individuals in Alameda County Live in X City

% of Sheltered Individuals by Race/Ethnicity



Gender Identity



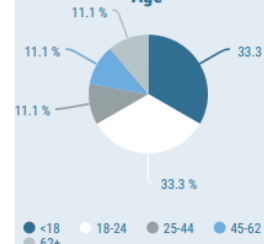
Physical & Mental Health Conditions at Enrollment

- Mental Health x%
- Substance Use x%
- Chronic Health Condition x%
- HIV/AIDS x%
- Developmental Disability x%
- Physical Disability x%



X% of Sheltered Individuals are Veterans

Age



X% of Sheltered Individuals are Chronically Homeless

Type of Shelter



Emergency Shelter x%



Transitional Housing x%



Safe Haven x%

Questions? Please contact [data@everyhome.org](mailto:data@everyhome.org)

Page 1 of 2



# HUD CoC Notice Of Funding Opportunities



**EveryOneHome**  
Ending Homelessness  
in Alameda County

# Highlights

- Our Continuum was **awarded a total of \$40,087,543.00** for all Tier 1 renewals, two new DV bonus projects, and the CoC Planning Grant
- **All renewal projects were funded** but renewal rental assistance projects were decreased
- **Two NEW DV Bonus Projects** were awarded: Rapid Rehousing for Transitional Age Youth Victims of Violence and DV CES, totaling \$1,921,891.00
- New projects not funded: HMIS Expansion and Rapid Rehousing for LGBTQ+TAY Victims of Violence





# Thank you!



**EveryOneHome**  
Ending Homelessness  
in Alameda County