

Homeless Services

Community Homelessness Services Division - City of Oakland

TRANSITIONAL HOUSING



HUD defines the term transitional housing as “a project that is designed to provide housing and appropriate supportive services to homeless persons to facilitate movement to independent living. The housing is short-term, typically less than 24 months.



CHS TH PROGRAMS



Transitional Housing

Typical Components of TH



Shared Housing - common areas. Residents are provided their own bed with a roommate. Some programs residents have their own room.



Long-term stay program up to 24 months. Shelter is provided while residents take the personal steps needed to prepare for permanent housing.



Intensive supportive and case management services are available on site. This may include housing navigation, counseling, group meetings, etc.

A



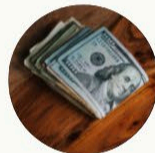
**ENROLL IN BENEFITS/
INSURANCE**

B



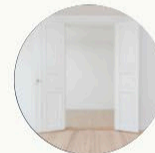
**ENGAGE IN SERVICES
AND PERSONAL
PROGRESS**

C



**ACQUIRE AND
INCREASE INCOME**

D



**ENTER INTO
PERMANENT HOUSING**

Outcomes We Expect to See from TH Participants

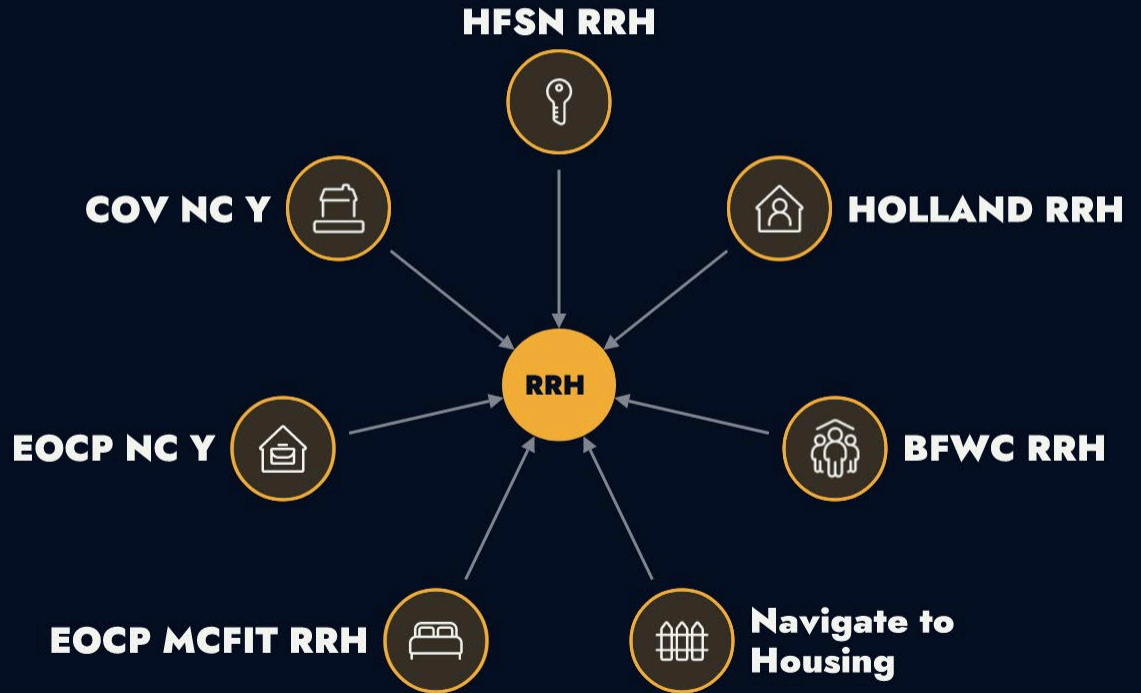
RAPID REHOUSING

HUD defines the term Rapid re-housing as an intervention that rapidly connects families and individuals experiencing homelessness to permanent housing through a tailored package of assistance that may include the use of time-limited financial assistance and targeted supportive services. Rapid rehousing programs help families and individuals living on the streets or in emergency shelters solve the practical and immediate challenges to obtaining permanent housing while reducing the amount of time they experience homelessness, avoiding a near-term return to homelessness, and linking to community resources that enable them to achieve housing stability in the long-term.

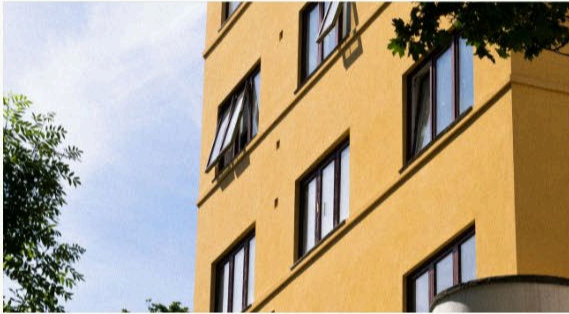




CHS RRH PROGRAMS



Typical Components of RRH



Housing identification - clients are supported with identifying housing comparable with their income and work with landlords to accept tenants and payment vouchers.



Rent and move-in assistance - financial assistance is provided based on individual need. It may include funds for deposit, move in costs, and rental assistance (often prorated) for 6 - 12 months. Few programs may provide assistance for longer.



Rapid Re-Housing case management and services - individualized case management is provided to connect clients to resources and benefits, ensure long-term housing stability, employment services, etc.

A



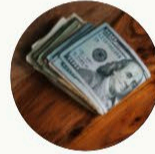
IDENTIFY HOUSING

B



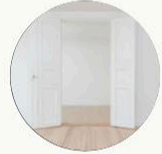
**ENGAGE IN SERVICES
AND PERSONAL
PROGRESS**

C



**ACQUIRE AND
INCREASE INCOME**

D



**SUSTAIN PERMANENT
HOUSING**

Outcomes We Expect to See from RRH Participants

PERMANENT SUPPORTIVE HOUSING (PSH) – SERVICES



HUD defines the term transitional housing as “a project that is designed to provide housing and appropriate supportive services to homeless persons to facilitate movement to independent living. The housing is short-term, typically less than 24 months.



CHS PSH PROGRAMS



Typical Components of PSH



Extensive Case Management including assisting clients with preparing paperwork for housing, providing readiness services and landlord engagement.



Connection to permanent housing and supplemental housing support such as money for furniture/move-in costs.



Follow-up case management services to support sustainment of housing.

**ENTER AND SUSTAIN
PERMANENT HOUSING**



**ENROLL IN RELEVANT
FINANCIAL AID
PROGRAMS**



**ACQUIRE AND
INCREASE
INCOME**



**BECOME
SELF-SUFFICIENT**

Outcomes We Expect to See from PSH Participants

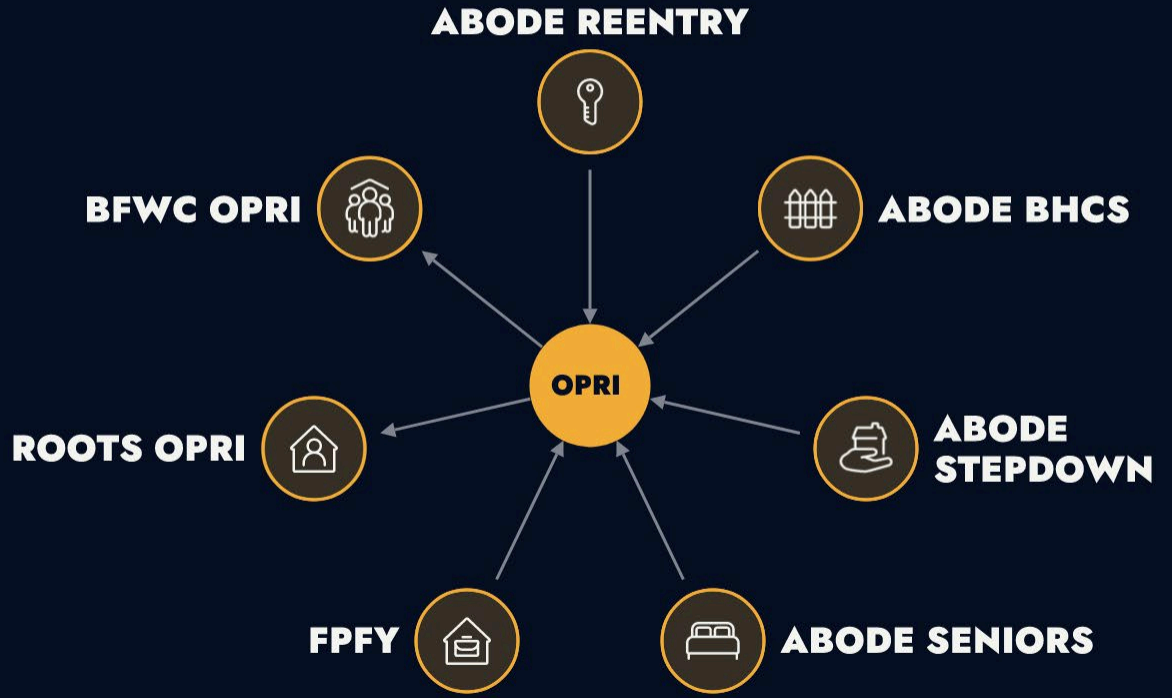
OAKLAND PATH REHOUSING INITIATIVE - OPRI



Services for the most vulnerable Oakland residents. OPRI is a rental assistance program designed to provide housing placement and ongoing subsidies and supportive services to people living on the street or in emergency shelters, and people exiting foster care or the criminal justice system.



CHS OPRI PROGRAMS



Typical Components of OPRI



Extensive outreach and Case Management including assisting clients with preparing paperwork for housing, providing readiness services and landlord engagement.



Rapid connection to permanent housing and supplemental housing support such as money for furniture/move-in costs.



Follow-up case management services to support sustainment of housing.

**ENTER AND SUSTAIN
PERMANENT HOUSING**



**ACQUIRE AND
INCREASE
INCOME**

**BECOME
SELF-SUFFICIENT**



OVERCOME BARRIERS



Outcomes We Expect to See from OPRI Participants

EMERGENCY SHELTER (ES)



HUD defines the term Emergency Shelter as “any facility with overnight sleeping accommodations, the primary purpose of which is to provide temporary shelter for the homeless in general or for specific populations of the homeless.”

Immediate access to a bed to sleep in and a roof to sleep under. Emergency shelter locations may be available to anyone seeking shelter or they may be tailored to specific populations.

EMERGENCY SHELTER

Components of ES



Low barrier services provided: bed, roof and food typically in a shared space with the emphasis on shelter and safety.



On-site case management services and group meetings to address urgent, immediate and when possible long-term needs.



Connection to services and resources including housing services.

COMMUNITY CABINS (CC)

Oakland's Community Cabins are a form of an Emergency Shelter intervention. They target population is unhoused adult-only households.



Community Cabins

Components of CC



Paired housing in a community environment. Members have personal and private space.



Staff provide: case management type services by way of addressing immediate/emergent needs, life skills, community meetings and activities



Permanent housing acquisition support through housing navigation services; including needs and readiness assessment, referrals, system navigation support, and advocacy and additional short term housing financial support.

A



**FOOD AND HOUSING
SECURE**

B



**ENGAGE IN THE
COMMUNITY - FEEL
CONNECTED**

C



**ACQUIRE BENEFITS
AND ENROLLED IN
HEALTH INSURANCE**

D



**CONNECTED TO
HOUSING AND
DEVELOPING STEADY
INCOME**

Outcomes We Expect to See from ES/CC Participants



CHS ES PROGRAMS





CHS CC PROGRAMS



Street Outreach (SO)

Street outreach involves moving outside the walls of the agency to engage with people experiencing homelessness who may be disconnected and alienated not only from mainstream services and supports, but from the services targeting homeless persons as well.

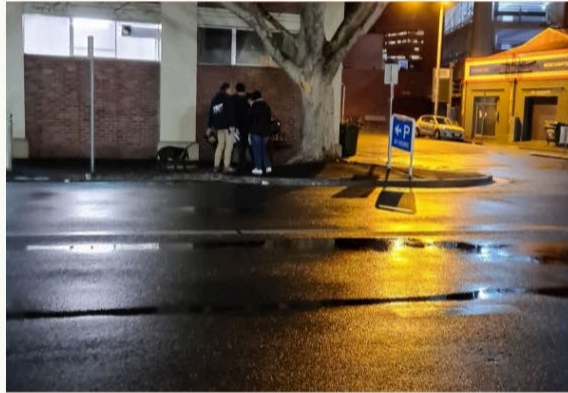
Specifically, street outreach programs reach out to unsheltered homeless people; connecting unsheltered homeless people with emergency shelter, housing, or critical services; and providing urgent, non-facility-based care to unsheltered homeless people who are unwilling or unable to access emergency shelter, housing, or an appropriate health facility.



Components of SO



Street Outreach workers have knowledge of what is happening on the ground. Their work includes identification of homeless persons living outdoors and relationship building



Street Outreach workers build rapport with unhoused people and conduct needs assessments and safety assessments



Street outreach workers help connect people to services and enroll in benefits. They help address immediate health and safety concerns.

Recreational Vehicle Safe Parking (RVSP)

In general, Safe Parking Programs provide people living in their vehicle a safe and legal place to park and sleep at night. The RVSP provides a safe and legal 24/7 RV lot for owners of RVs to reside.



Recreational Vehicle Safe Parking

Components of RVSP



Identification and program recruitment including possible financial support for entry into the program.



Safe place to reside with a community focus.



Connection to permanent housing options and supportive services.

A



**INCREASE IN HEALTH
AND SAFETY**

B



**ENGAGE IN THE
COMMUNITY - FEEL
CONNECTED**

C



**ACQUIRE BENEFITS
AND ENROLLED IN
HEALTH INSURANCE -
BASIC NEEDS MET**

D



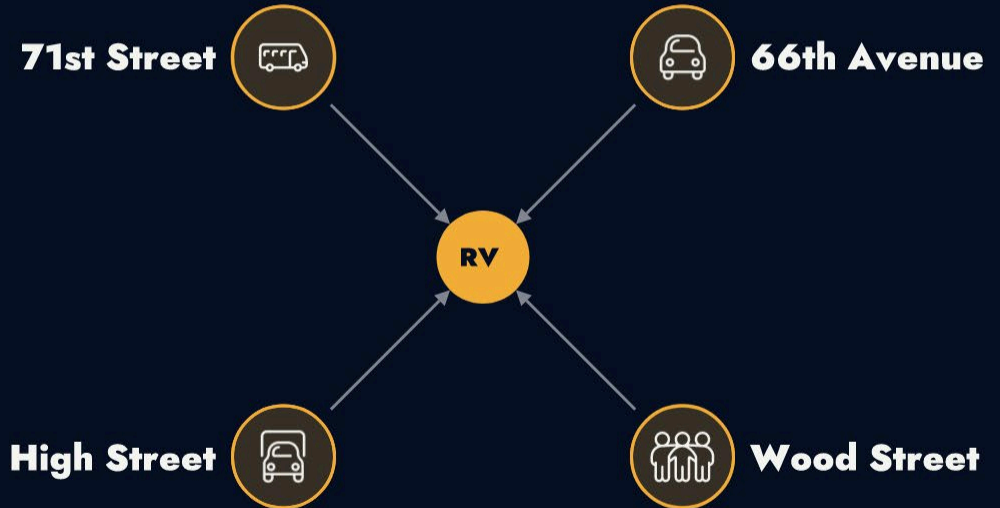
**INDEPENDENCE AND
STABILITY**

Outcomes We Expect to See from SO/RVSP Participants

CHS SO PROGRAMS



CHS SP PROGRAMS



Street Outreach Goals



- Outreach to unsheltered residents throughout Oakland



- Provide Harm Reduction services



- CES enrollment.



- Support clients to become completely document ready for housing (data source – agency log, moving to HMIS when available)



- Warm hand-offs clients from outdoor residency to an indoor location.



- Identify number of locations visited by outreach team each month.

RV Safe Parking Goals



- Maintain full program occupancy



- Connections to services and shelter



- Participants enrolls in CES



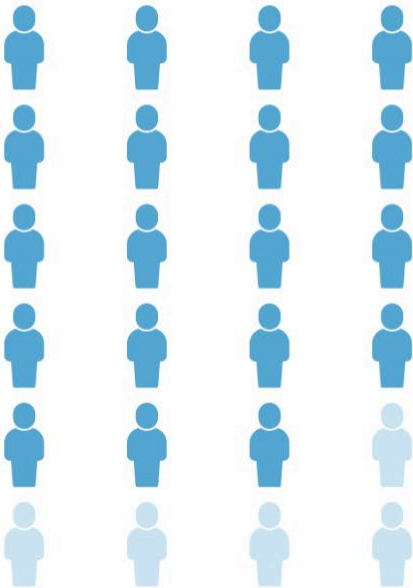
Outcome 4

- Individualized financial based-need support

Exits from long term housing programs - FY 22/23

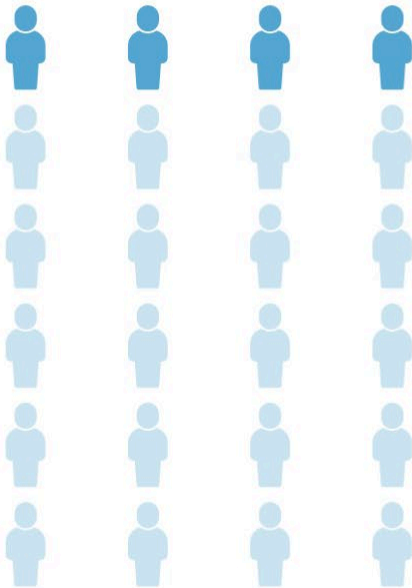
Long-term housing programs are expected to result in positive exits to permanent housing

77%



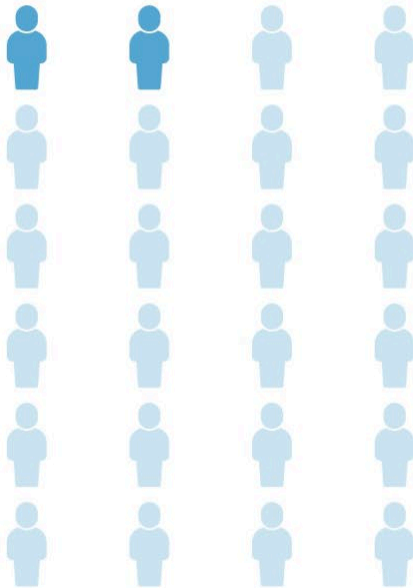
EXITS TO PERMANENT HOUSING

14%



EXITS TO TEMPORARY LOCATIONS

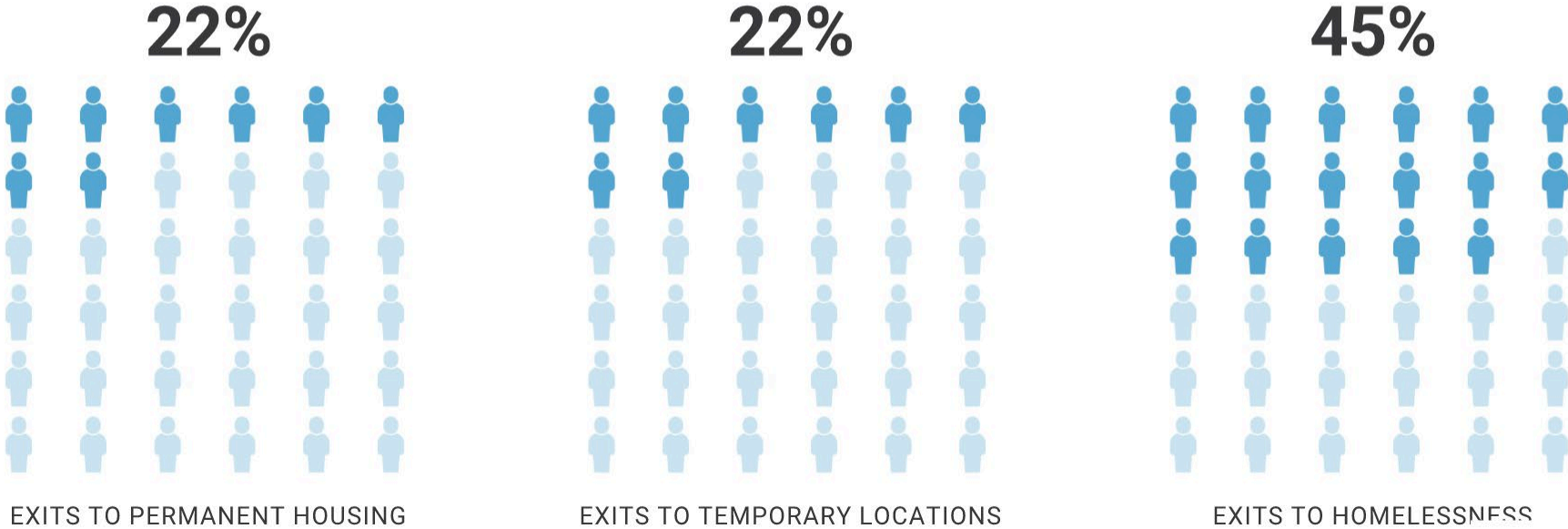
5%



EXITS TO HOMELESSNESS

Exits from Emergency Shelter and Navigation programs FY 22/23

Programs of this nature serve as a first step out of unsheltered homelessness. The goal is to transition participants to long-term housing solutions or permanent housing, preventing an unsheltered status.



1

Systemic Issues

2

Affordable Housing Stock

3

Poverty and Equity

4

Collaborations

5

Access to Health Care

6

Narrative

Challenges and Growth