



OAK KNOLL

Parcel 24

Parcel 23

Parcel 19

Parcel 11

PARCELS 11,19,23,24
PC PRESENTATION
Dec 6th, 2023

1. Oak Knoll Masterplanning Principles/Precedents
2. Phase One Site Elements
3. The OKDGs
4. Perspective Renderings
5. Site Plans



- ### OAKLAND HILLS PLANNED COMMUNITY PRECEDENTS - PRINCIPLES
- WALKABILITY
 - CONNECTION TO NATURE / PARKS & NATURAL LANDSCAPE
 - MIX OF USES (RESIDENTIAL, RETAIL AND COMMUNITY FACILITIES)
 - STREET MONUMENTATION (STREET DESIGN)
 - ARCHITECTURE AS 'BACKDROP'

Oak Knoll Masterplan - Phase One







- Approved FDPs
- Currently Under Review
- Future Phase 1 FDPs

Phase 1 Parcel Map

3.2 ARCHITECTURAL STYLE MATRIX - BY FAMILY

	Massing / Roof Form	Windows and Doors	Porches / Balconies and Details	Materials and Color*
ARTS AND CRAFTS				
Craftsman Bungalow	<ul style="list-style-type: none"> • Lower pitch gable roofs (4/12 - 8/12) • Broad eaves with exposed rafters • Wide shed dormers • 1/2 story upper floors 	<ul style="list-style-type: none"> • Double hungs, single or grouped • Casements, single or grouped • Bay windows • Wide panelled entry doors 	<ul style="list-style-type: none"> • Wide porches, often covered by primary roof form, integrated into primary mass • Thick porch columns 	<ul style="list-style-type: none"> • Wood or composite siding and trim • Cast stone brick used as accent materials • Subdued earth tone colors with warm accent colors
Tudor Arts and Crafts	<ul style="list-style-type: none"> • Steeper pitch gable roofs (8/12 - 18/12) • Cross-gables and dormers • 1/2 story upper floors • Assymetric massing 	<ul style="list-style-type: none"> • Casements, single or grouped • Bay windows • Arched entry doors, pointed or round 	<ul style="list-style-type: none"> • Assymetric entry features (stoops or porches) integrated into primary bldg mass 	<ul style="list-style-type: none"> • Wood and stucco walls • Brick used as accent material • White or rich earth tone base color with darker accent color on trim
MEDITERRANEAN				
Spanish Colonial Mission Revival	<ul style="list-style-type: none"> • Lower pitch hip roofs (4/12-8/12) • Secondary shed roofs • Secondary flat roofs areas with shaped parapets 	<ul style="list-style-type: none"> • Casements, single or grouped • Tall double hungs • Arched entry doors 	<ul style="list-style-type: none"> • Covered entry arcades • Juliet balconies • Painted metal railings and window grilles 	<ul style="list-style-type: none"> • Stucco walls • Terra cotta roof tiles • Colored glazed tile and cast ornamental details as accents • Light colored walls
CALIFORNIAN				
Farmhouse Traditional	<ul style="list-style-type: none"> • Medium pitch gable roofs (6/12 - 12/12) and simple primary mass • Gable and shed dormers • 1/2 story upper floors 	<ul style="list-style-type: none"> • Double hungs, single or grouped • Casements, single or grouped • Panelled entry doors 	<ul style="list-style-type: none"> • Front or side porches - shed roof, additive to primary mass • Shed awnings 	<ul style="list-style-type: none"> • Vertical wood or composite siding, board and batten • White and light colors





Looking over Club Knoll and Heritage Oak Woodland

Farmhouse

Mission / Mediterranean

Craftsman



Typical SFR Fronting on Creekside Loop - Parcel 11



Typical SFR Fronting on Creek - Parcel 24











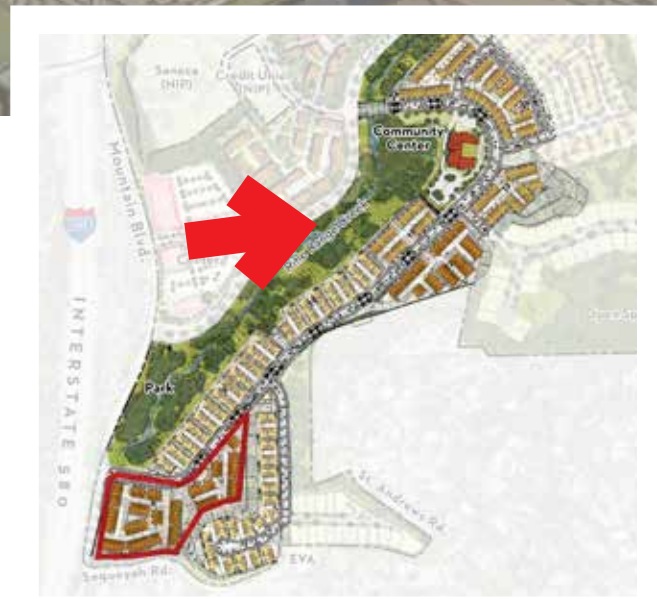




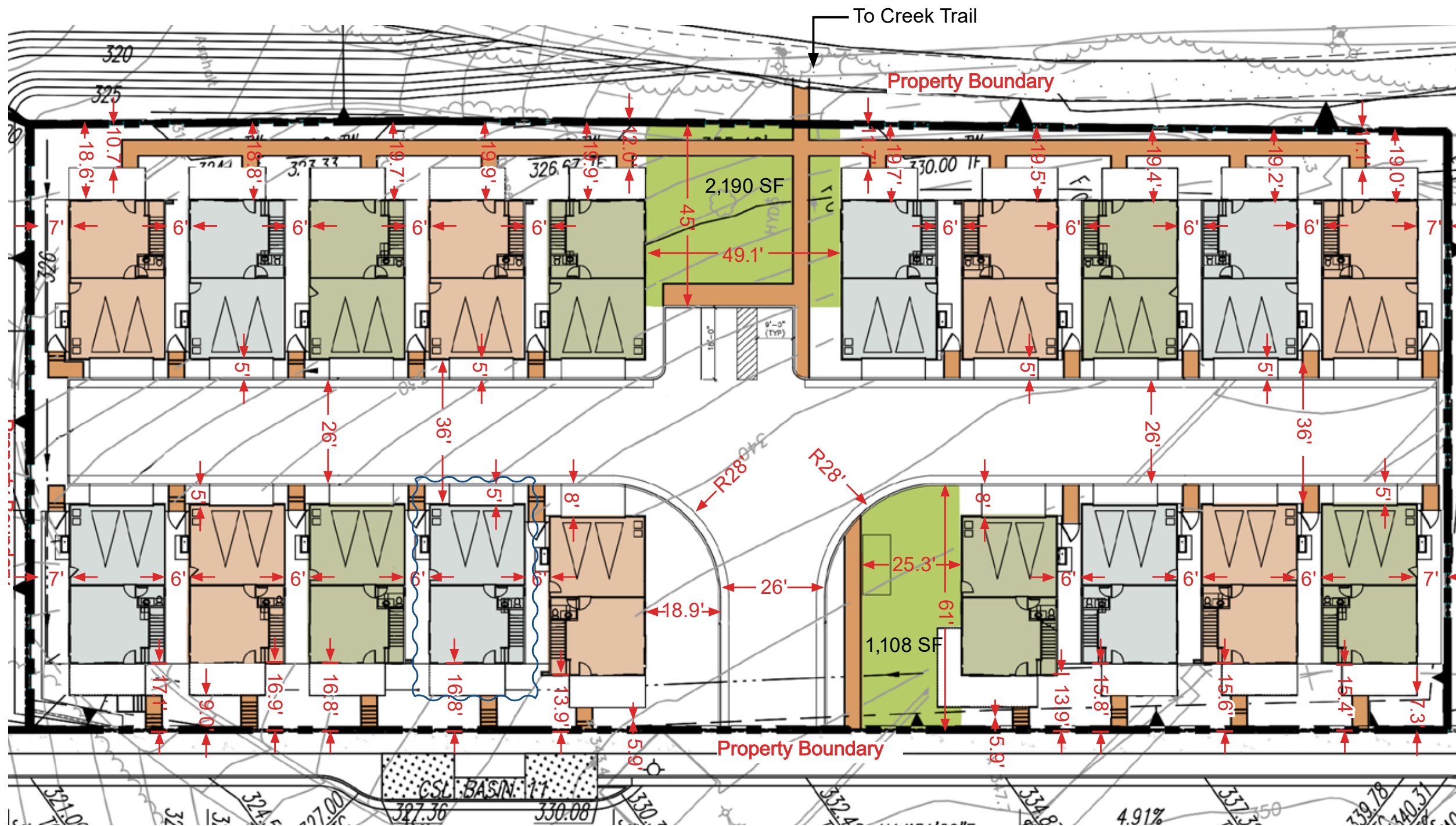


Pedestrian Bridge - Creek Trail (Looking up to Parcel 10)





Looking over Club Knoll and Heritage Oak Woodland



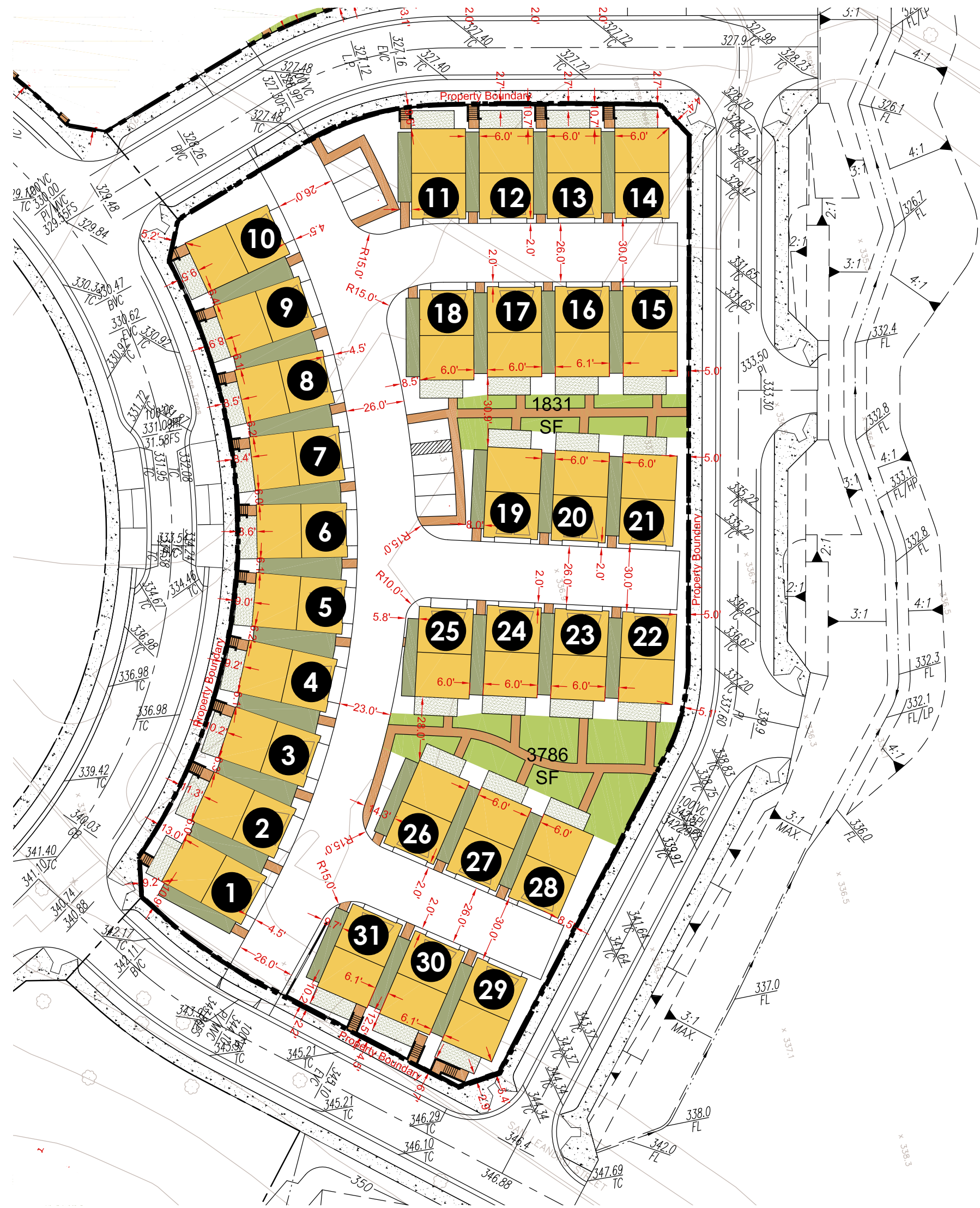
Site Plan Parcel 11

LEGEND

- BUILDING NUMBERS
- COMMON OPEN SPACE
- PRIVATE YARDS
- 2ND FLOOR DECK



Site Plan Parcel 19



Site Plan Parcel 23



Site Plan Parcel 24