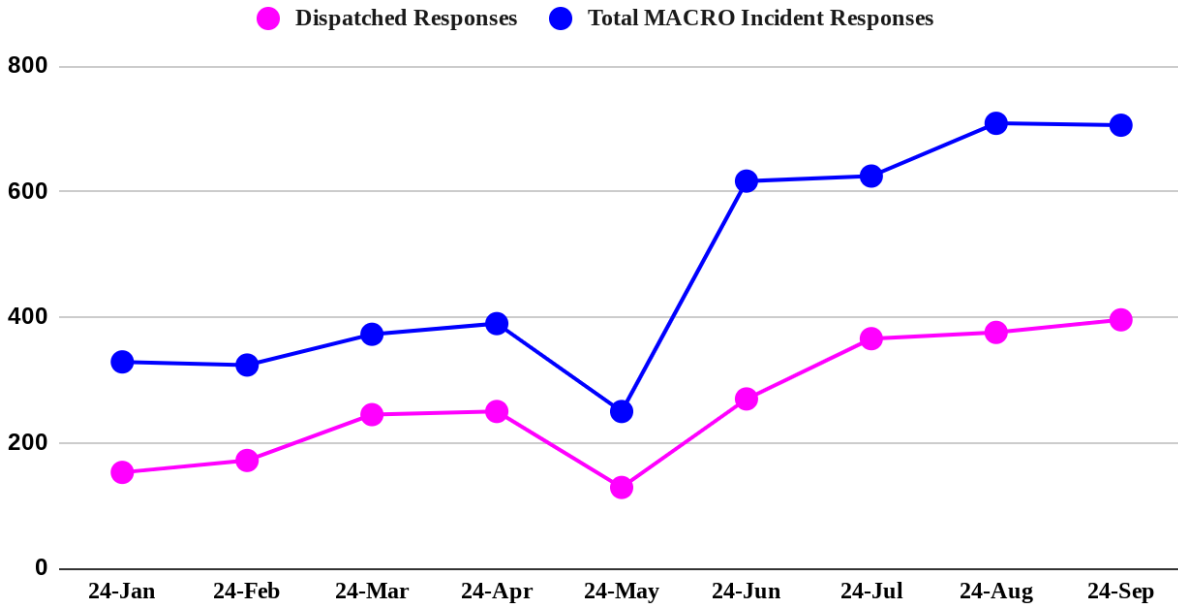


MACRO Community Advisory Board Meeting October 24, 2024

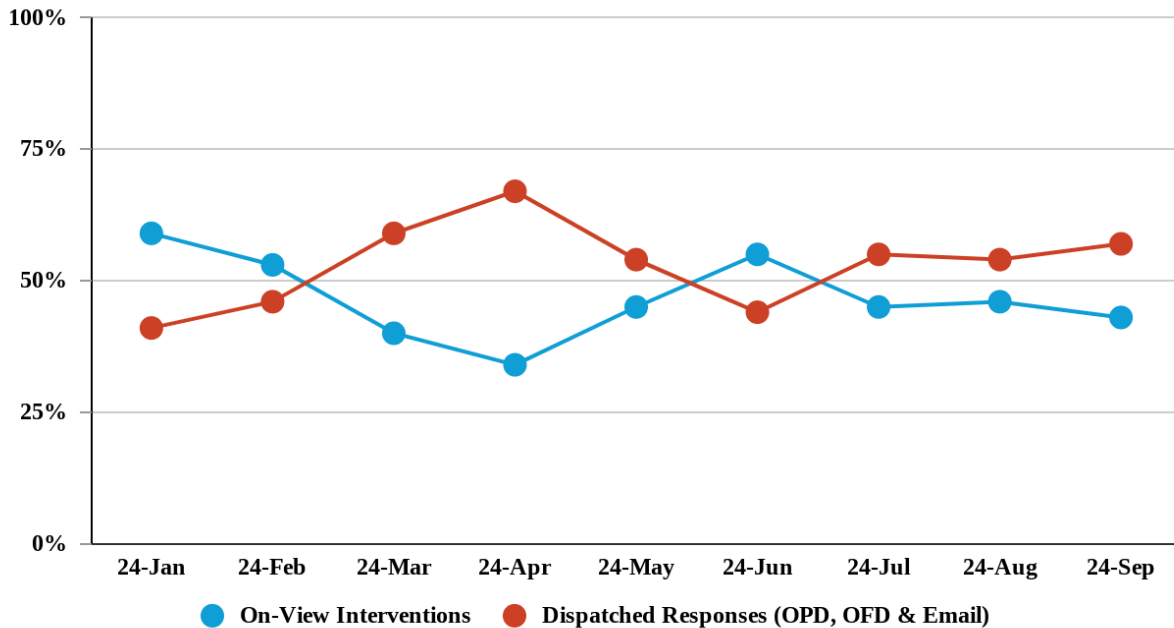
MACRO Output & Response Report [January – September]

MACRO Quarterly Outreach and Response Reports (QORR) are compiled with data from the FCC (Total Incident Responses), the MACRO Incident MS XL Sheet, and MACRO Incident MS Form.

General Incident Response Data

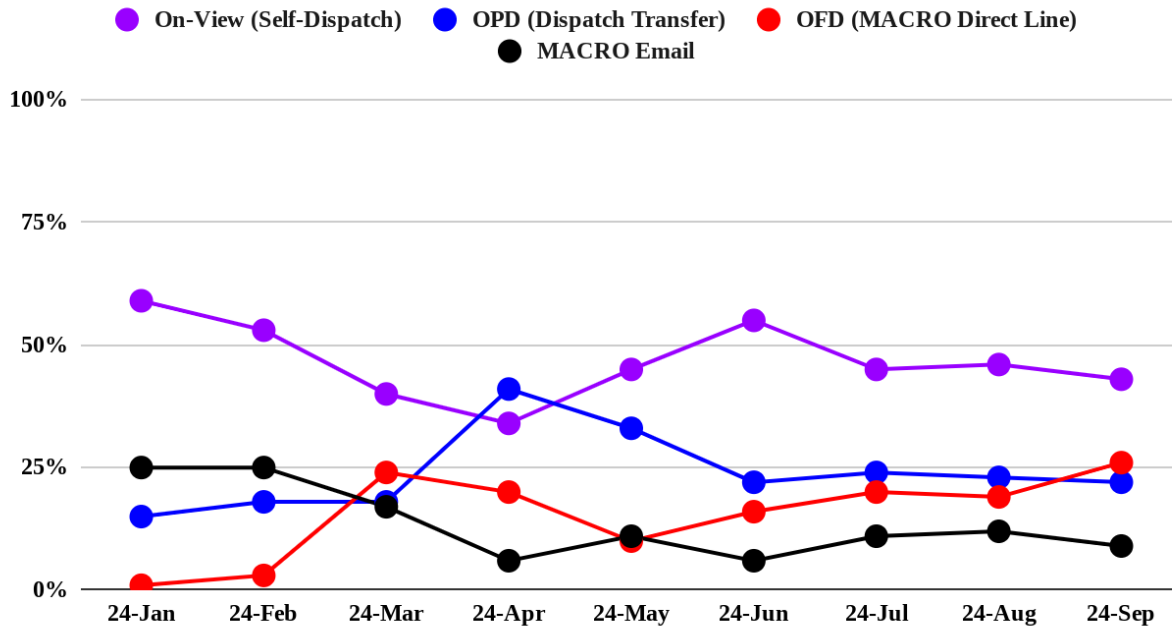


Comparison of Incident Source On-View Interventions and Dispatched Responses



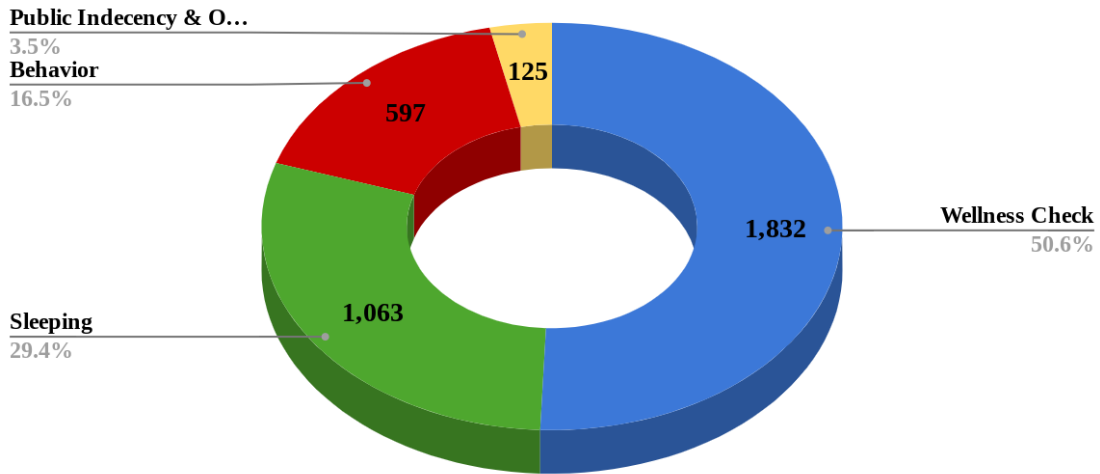
Source of Incident	Description
On- View (Self-Dispatch)	A MACRO unit encounters an incident and decides to respond based
OPD (Dispatch Transfer)	OPD transfers an incident to OFD for a MACRO Response
OFD (MACRO Direct Line)	Received via MACRO direct line or Fire Company requests
MACRO@oaklandca.gov	Non-emergency requests for MACRO services received via email

Dispatches by Source



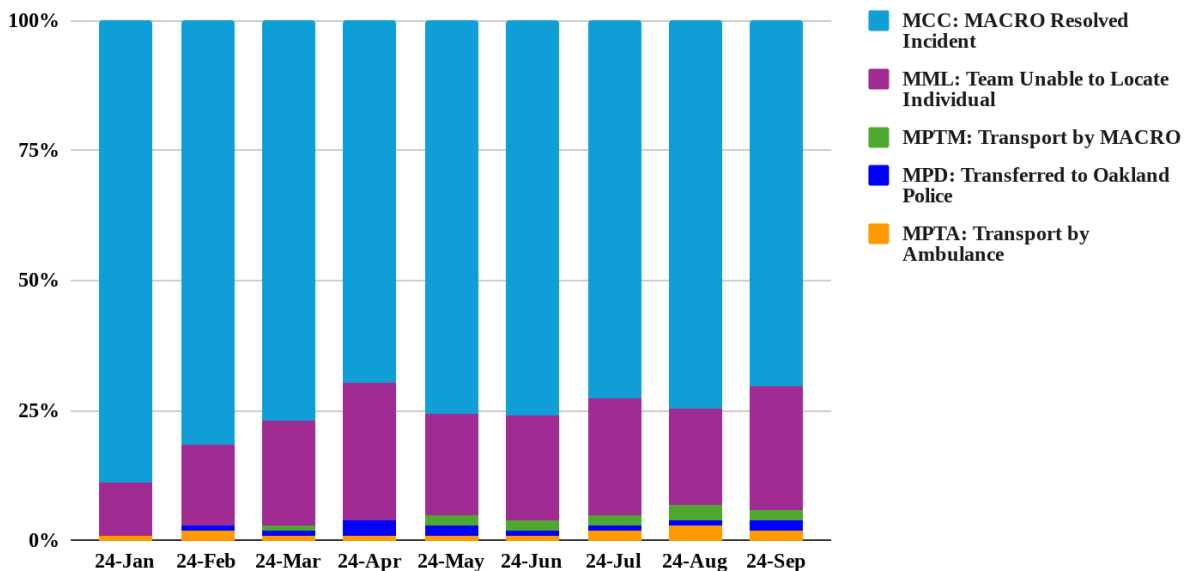
Incident Types	Description
Wellness Check	A check on the health and well-being of an individual. In response to concerns about a person's safety, health, or welfare.
Sleeper Check	A check on an individual found sleeping in a public place in response to concerns about a person's safety, health, or welfare.
Behavioral Concern	A situation where an individual's behavior raises concerns but does not constitute an immediate crisis or emergency.
Public Indecency / Nakedness	A situation where an individual is found without clothing in a public setting.
Other	This category is used as a catch-all for scenarios that are unique or less common.

Types of Incidents (January to September 2024)



Resolution Codes	Description
MCC- Call Complete	Incident Cleared by MACRO Crew
MNL – Unable to Locate	Unable to Locate Subject of Dispatch Request
MPTM – Patient Transport by MACRO	MACRO Team Patient Transport
MPD – Transferred to OPD	An Incident transferred to OPD for response including CATT Team requests
MPTA – Patient Transport by EMS	MACRO Teams request EMS Transport

Incident Resolutions (n= 3, 679)



The Graph below shows variability of MACRO Responses across Oakland in different geographic zones through 2024.

Geographical Area of Service Request

