

Grand Avenue Complete Streets Paving Project

Proposed Street Cross-Sections

Spring 2025

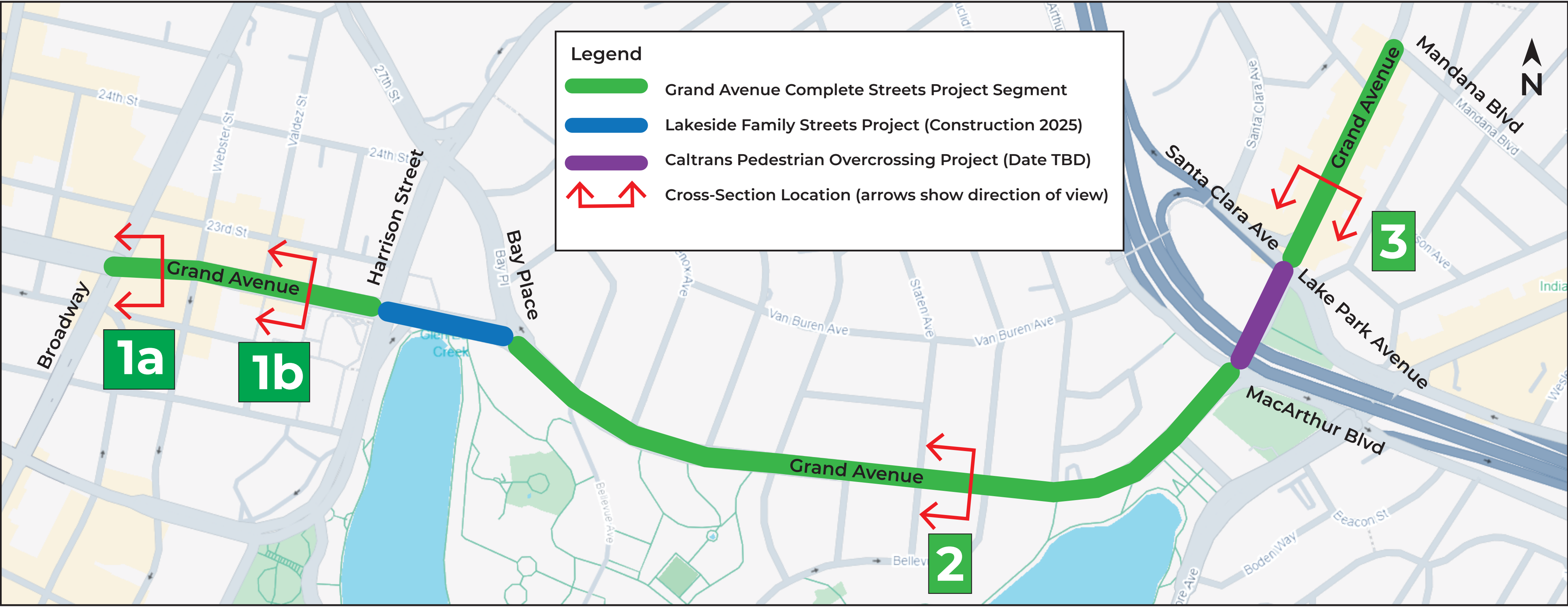
Contact: Charlie Ream - CReam@oaklandca.gov

Website: <https://www.oaklandca.gov/projects/grand>

Sign up
for email
updates!

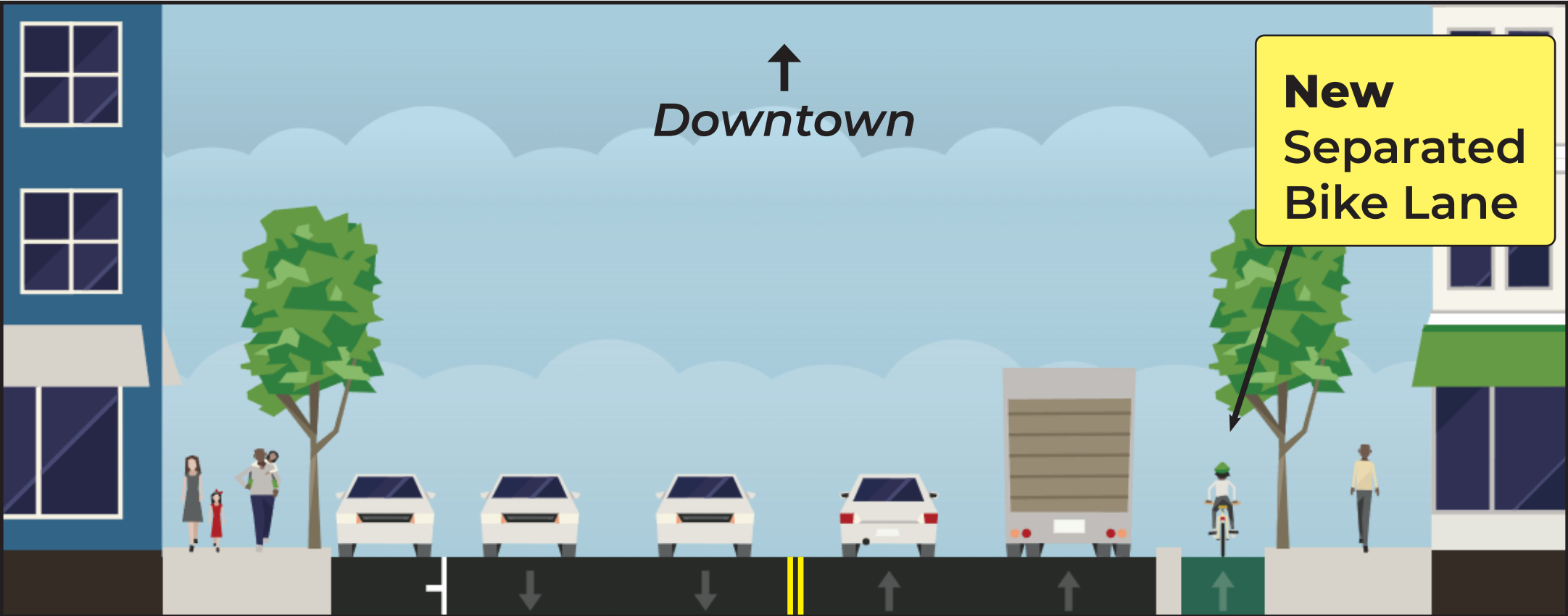


OVERALL CORRIDOR MAP



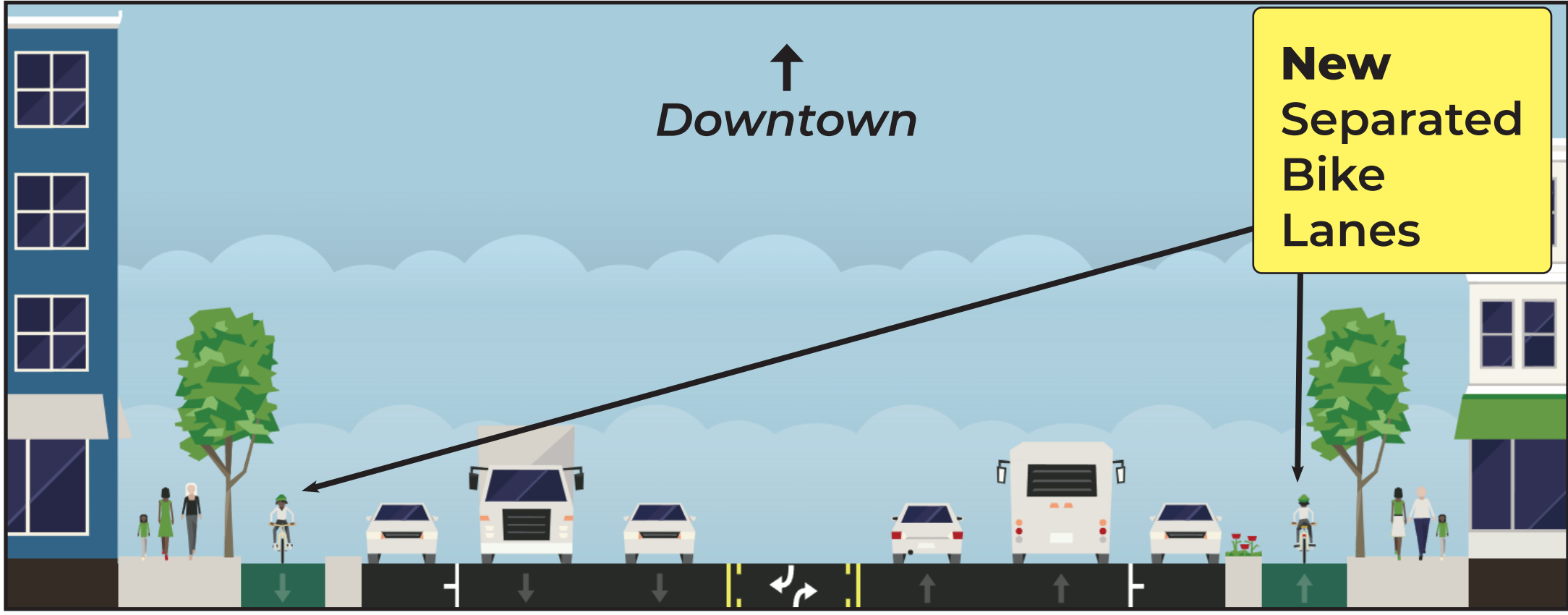
PREFERRED CONCEPT CROSS-SECTIONS

1a. Uptown - Broadway to Webster



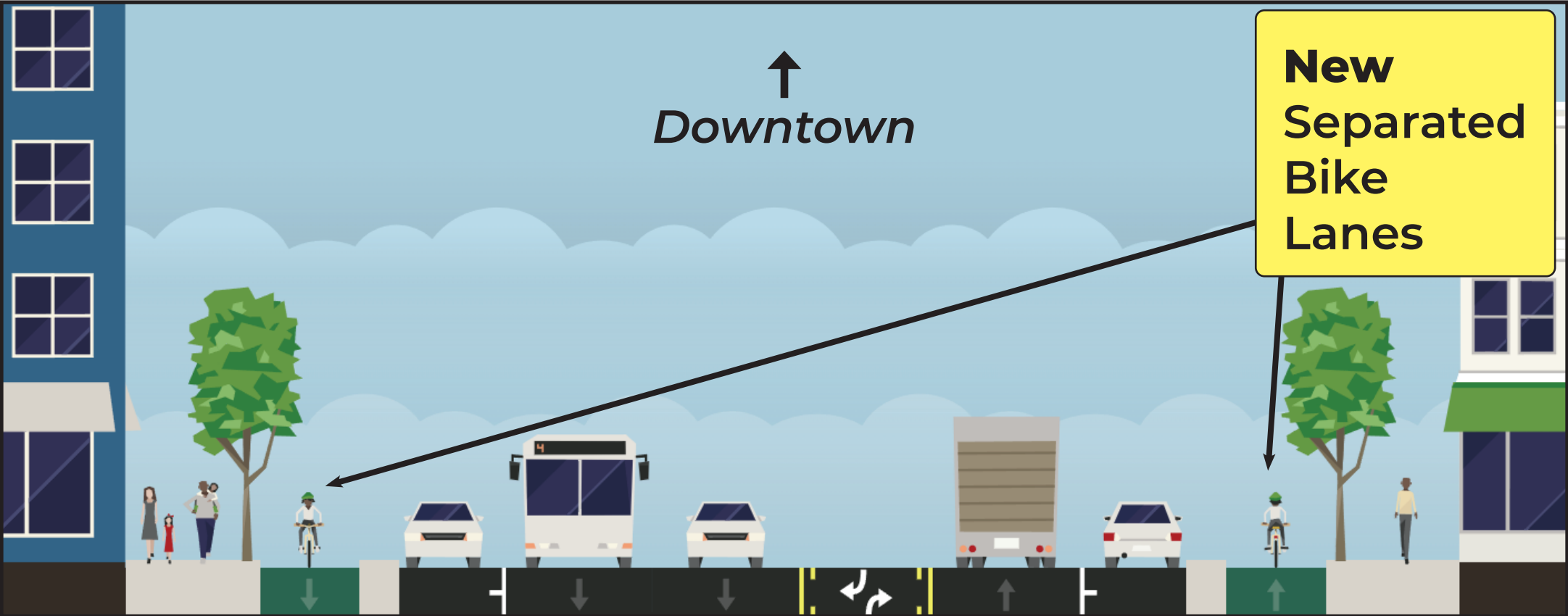
- Maintains high-demand curb access on south side
- Adds separated bike lane in westbound direction
- Upcoming project on Grand west of Broadway could install Eastbound bike lane if warranted in future

1b. Uptown - Webster to Harrison



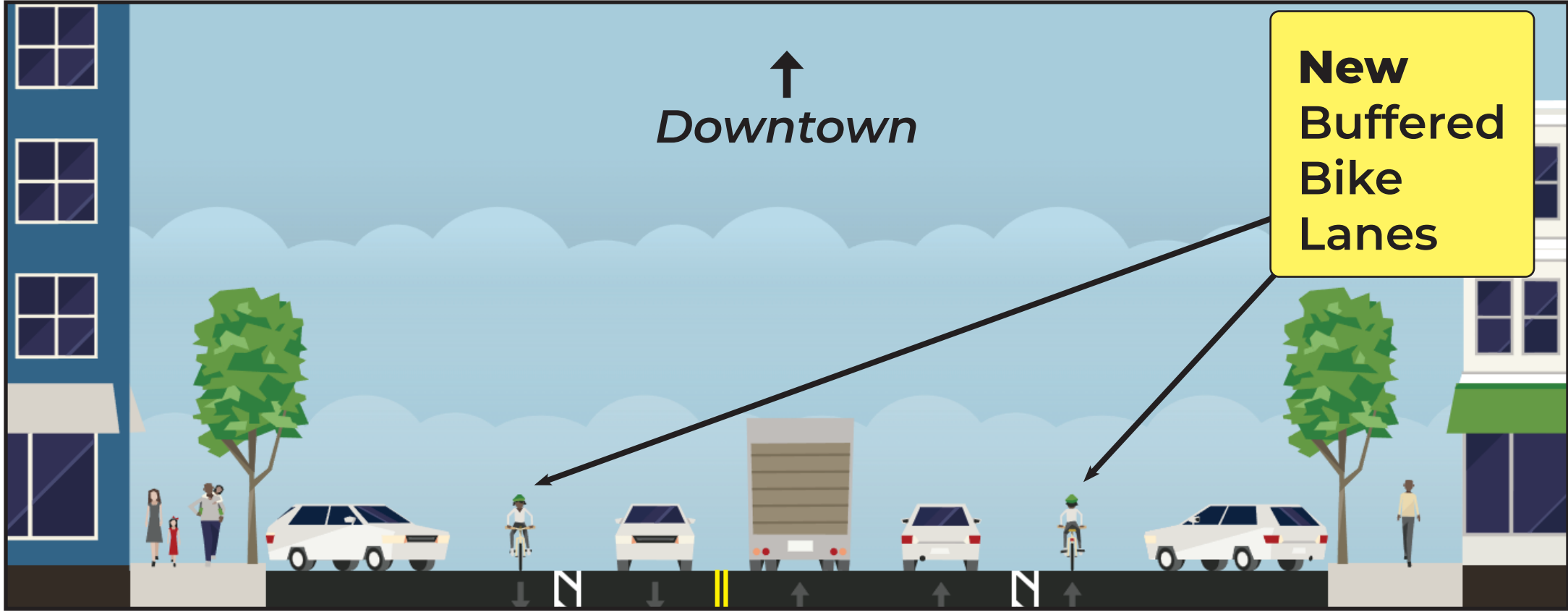
- Roadway widens east of Webster Street
- Adds separated bike lanes in both directions
- Adds pedestrian safety islands at Valdez Street

2. Adams Point - Bay to MacArthur



- Removes one lane of travel in westbound direction
- Adds separated bike lanes in both directions
- Adds pedestrian refuge islands where feasible
- Bus boarding islands at all transit stops

3. Grand Lake - Santa Clara to Mandana



- Removes one lane heading north away from I-580
- Adds buffered bike lanes in both directions
- Flips front-in angled parking to back-in angled
- Adds curbside loading zones on each side of Grand

Grand Avenue Complete Streets Paving Project

Lake Merritt Bikeways Map

Spring 2025

Contact: Charlie Ream - CReam@oaklandca.gov

Website: <https://www.oaklandca.gov/projects/grand>

Sign up
for email
updates!



HIGH-QUALITY BIKEWAYS AROUND THE LAKE!

This map shows a high-level plan and timeline for completing a continuous ring of high-quality bike facilities around Lake Merritt



Black Arrows note sections of bikeway that are one-way only (one-way bikeway on a one-way street). All other segments are two-way.

Grand Avenue Complete Streets Paving Project

Crashes on Grand Avenue

Spring 2025

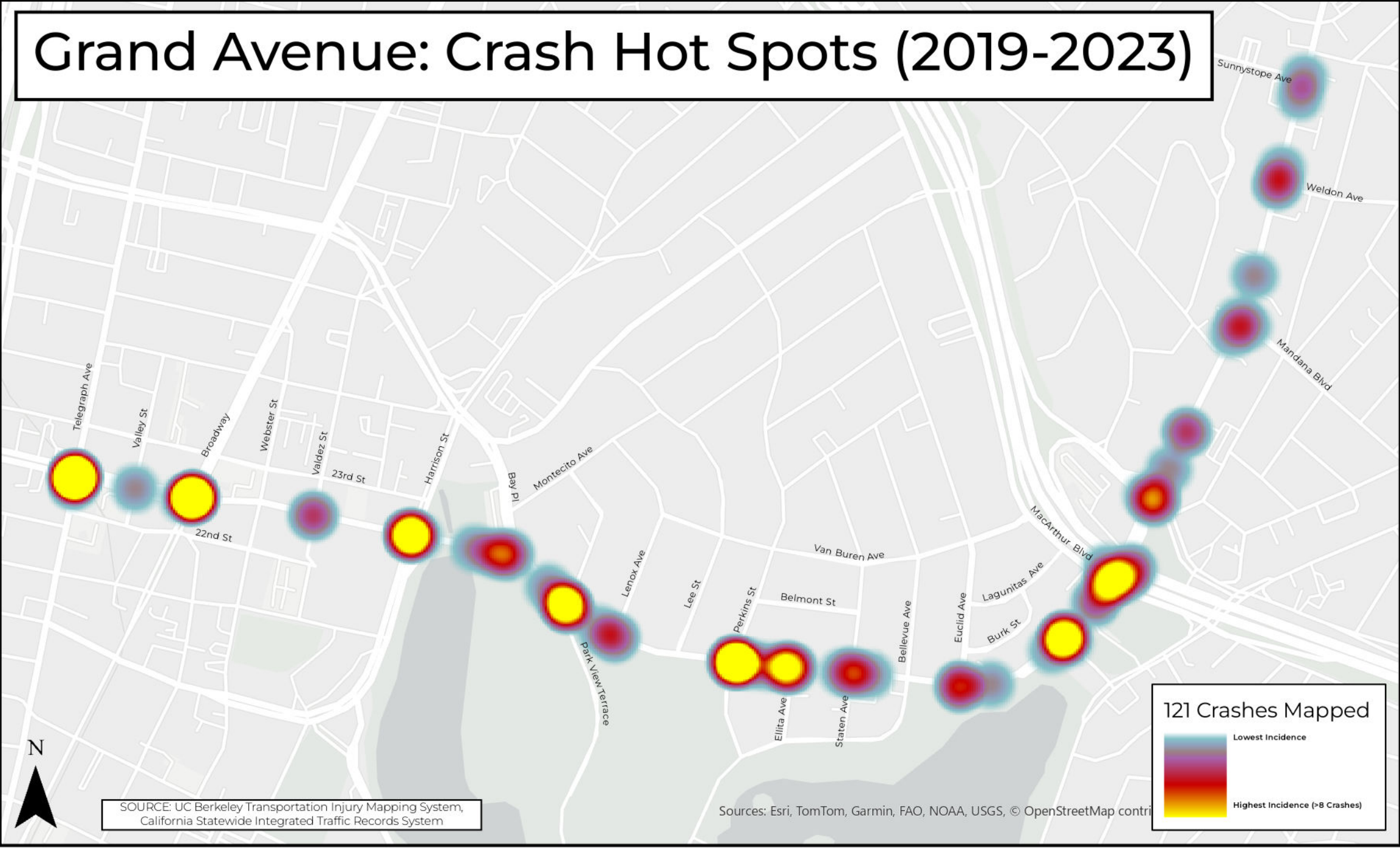
Contact: Charlie Ream - CReam@oaklandca.gov

Website: <https://www.oaklandca.gov/projects/grand>

Sign up
for email
updates!



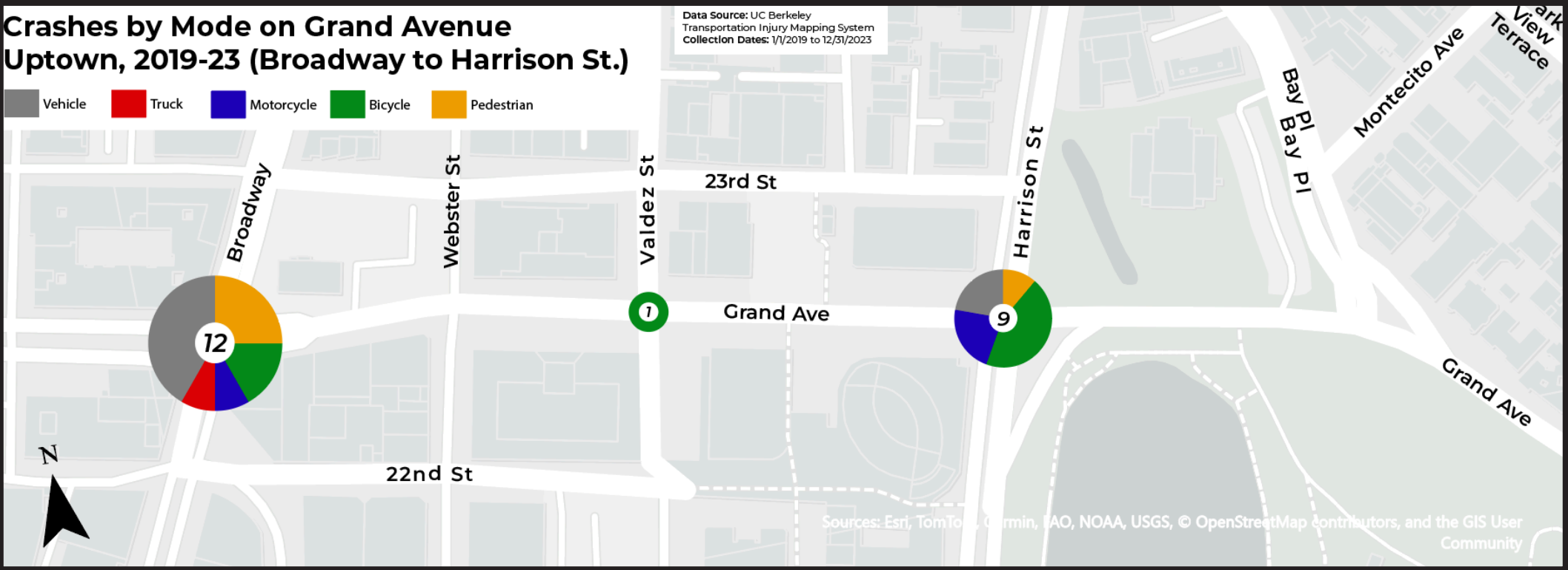
OVERALL CORRIDOR MAP



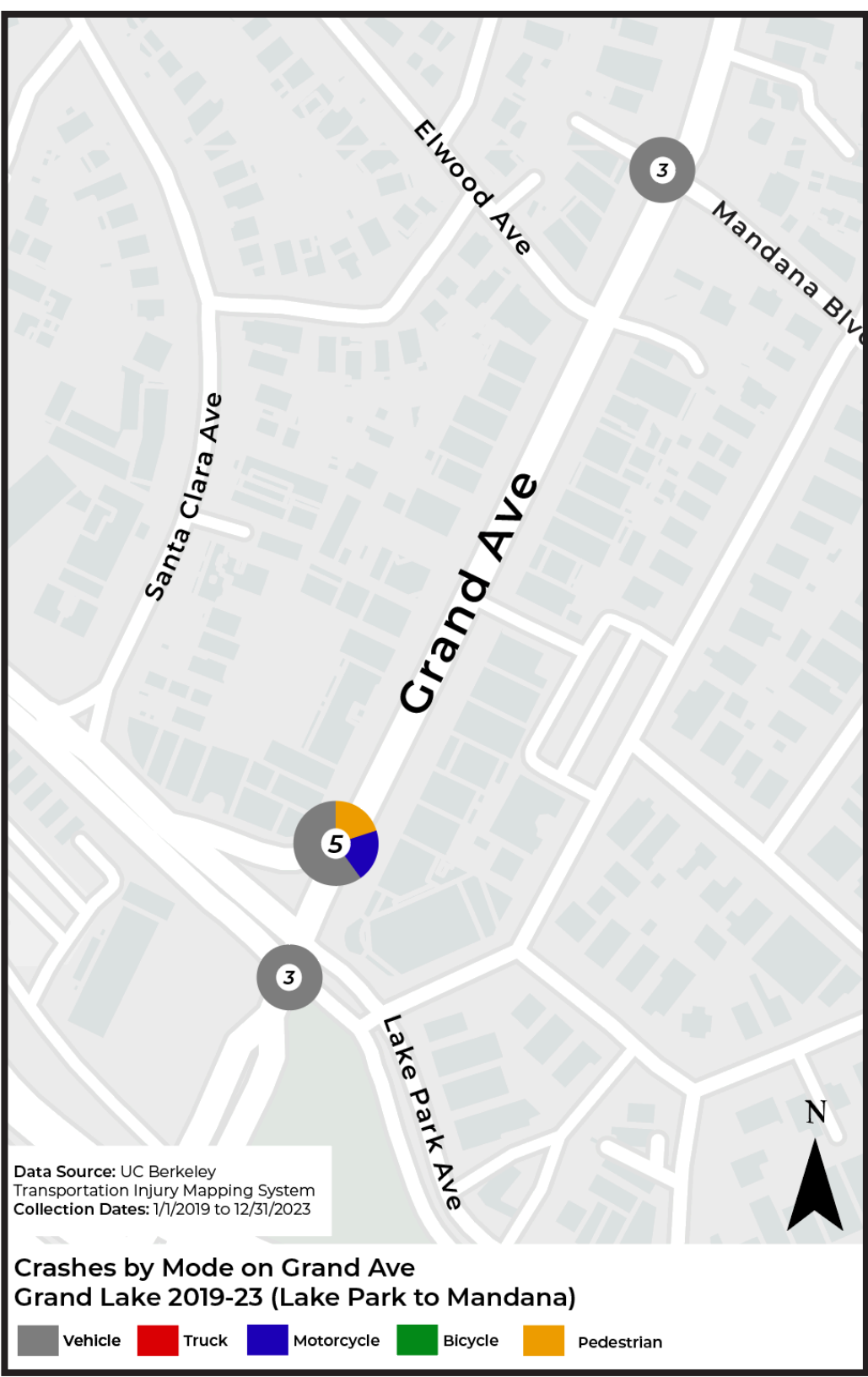
This map shows the density of traffic crashes involving all modes of travel along the Project segments of Grand Avenue. Crashes are the most densely concentrated between Broadway to MacArthur Blvd. Breakdowns of individual project segments are shown below.

INDIVIDUAL PROJECT SEGMENTS

1. Uptown - Broadway to Harrison



3. Grand Lake - Santa Clara to Mandana



2. Adams Point - Bay to MacArthur

