

2030 Equitable Climate Action Plan

What's **Your** Vision for an Equitable and Resilient Oakland?

Citywide Community Workshop

Oakland City Hall, Council Chamber
July 31, 2019



**Oakland
Climate
Action
Coalition**



We are guests on Ohlone land.



We are in **Huichin**:
Confederated Villages of Lisjan,
Chochenyo Ohlone Territory

Meeting Agenda

- 1. Equity Facilitators** - Welcome, Cultural Performance & Land Acknowledgement
- 2. City of Oakland** - 2030 ECAP: Framework
- 3. Small Group Discussion** - What's Your Vision for Oakland in 2030?
- 4. Equity Facilitators** - Overview of Climate Equity Solutions
- 5. Breakout Session** - Vote for the Climate Actions you want to see!
- 6. Public Advocates + Small Group Discussion** - Making the Vision Real
- 7. BayREN** - Existing Climate Action Programs
- 8. Learn about and sign up for climate solutions here today!**

Meeting Agreements

1. Ask questions during Q&A.
2. Share airtime.
3. One mic.
4. Respect all voices.
5. Be present.
6. Take care of yourself.
7. Have fun!

**Equity
Facilitator
Team**



**Oakland
Climate
Action
Coalition**



Neighborhood Leadership Cohort



“Core to a just transition is **equity, self-determination, culture, tradition, and deep democracy.**”

City of Oakland's Just Transition Resolution



Alex McBride – Chief Resilience Officer

Shayna Hirshfield-Gold - Acting Sustainability Manager

Jared O'Shaughnessy - Sustainability & Equity Fellow

Oakland 2030 Equitable Climate Action Plan





“Just Transition initiatives **shift the economy** from **dirty energy to energy democracy**, from funding **highways** to expanding **public transit**, from incinerators and **landfills to zero waste**, from **industrial food systems to food sovereignty**, from car dependent sprawl and **unbridled growth** to **smart urban development *without displacement***, and from rampant, **destructive over-development** to habitat and **ecosystem restoration.**”

- *City of Oakland's Just Transition Resolution*

Oakland's Emissions Reduction Goals*

56% reduction by 2030

83% reduction by 2050

**Relative to 2005 GHG emissions baseline*

Social, Racial, & Economic Equity

Oakland 2030 ECAP

How do we slow down Climate Change?

Local Emissions

Buildings & Energy

Transportation

Waste & Landfill

Life Cycle Emissions

Manufacturing & Production

Consumption

Disposal

Urban Forestry

Planting Trees

Restoring Soil

How do we adapt to Climate Change?

Heat

Sea Level Rise

Drought

Resilient Buildings & Housing

Fires

Urban Gardens

Flooding

May - July 2019

**Community
Workshops**

**December 2019 -
January 2020**

**Second Draft 2030
ECAP**

**September - November
2019**

First Draft 2030 ECAP

**Climate Equity Work
Days**

Town Halls (October)

April 2020

**City Council adopts
2030 ECAP**



Stay Involved!

1. **Climate Equity Work Days** (Begin in September)
2. **Town Hall Meetings** (October)
3. **Website & Climate Action Survey**
4. **Social Media**

Twitter: [@2030ECAP](https://twitter.com/2030ECAP)

Instagram: [@Oaklanders2030](https://www.instagram.com/Oaklanders2030)

Facebook:

→ **OCAC:** [/climateaction510](https://www.facebook.com/climateaction510)

→ **Oakland 2030 Group:** [/groups/oakland2030/](https://www.facebook.com/groups/oakland2030/)



CITY OF OAKLAND

City of Oakland

Mayor

City Council

City Attorney

City Auditor

City Administrator

City Departments

Major Projects:

Oakland Army Base
Coliseum
Port Liaison

Economic & Workforce Development

Housing & Community Development

Parks, Recreation, & Youth Development

Human Resources Management

Finance

Human Services

Planning & Building

Community Police Review Agency

Fire

Animal Services

Public Works

Equal Employment Investigations & Compliance

Police

Public Library

Race & Equity

Public Ethics Commission

Information Technology

Contracts & Compliance

Transportation

Burning Fossil Fuels

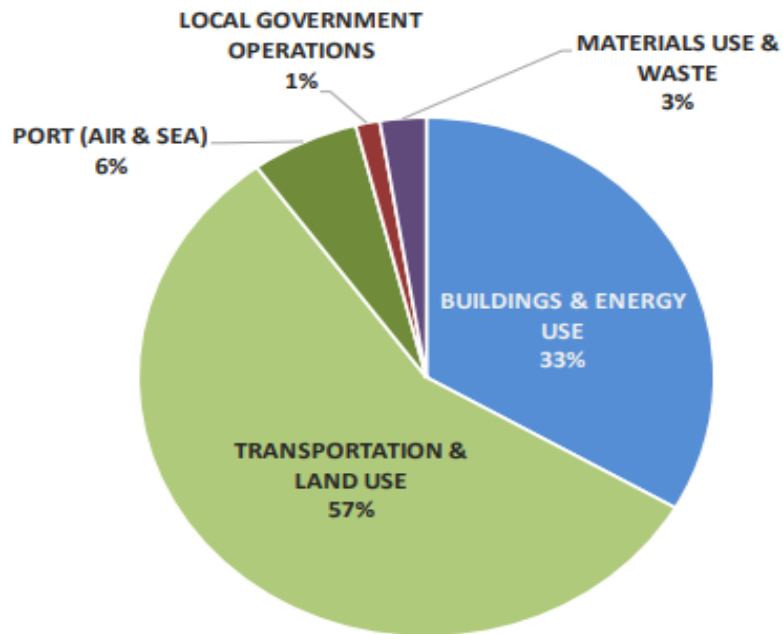


In Oakland, we primarily burn petroleum (oil) and natural gas

- Natural gas, which is mostly methane, can be used for electricity generation, powering some vehicles, and **buildings**
- Oil (gasoline, diesel, jet fuel) powers most of our **transportation**

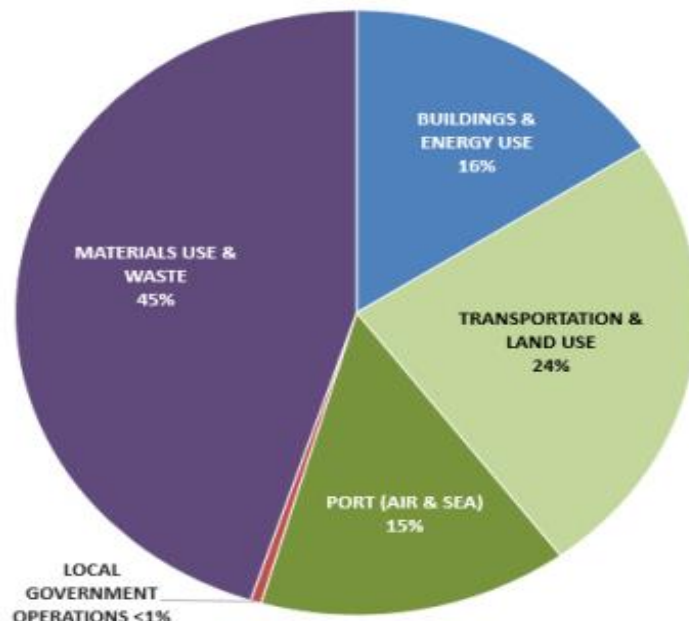
Oakland's Emissions Profile (2015)

Local Emissions Inventory



Total Emitted: 2,497,088 MT CO₂e

Life Cycle Inventory



Total Emitted: 7,482,738 MT CO₂e

2020 ECAP: Accomplishments

- Low-carbon electricity from East Bay Community Energy
- Energy efficiency partnerships & programs
- Improved alternatives to driving
- Public electric vehicle infrastructure, particularly in lower-income areas and buildings
- Increased opportunities for recycling and composting
- Single-use plastics' bans
- Closed loop landfill methane system
- Streamlined solar permitting





The CURB analysis shows that a few changes are key to reducing Oakland's GHG emissions

While cities must take an “all of the above” approach to climate action to achieve deep reductions, the analysis shows that not all actions are equal. Given the projected changes that will occur to Oakland's building and transportation systems as new technologies are adopted and State and Federal regulations take effect, **there are a few changes that have an outsized impact on the city's GHG emissions.**

- 1 Shift to 100% carbon-free energy
- 2 Eliminate fossil fuels from building heating systems
- 3 Improve building insulation and windows
- 4 Significantly shift people away from private auto trips
- 5 Accelerate the electrification of vehicles

What's your vision for Oakland by 2030?

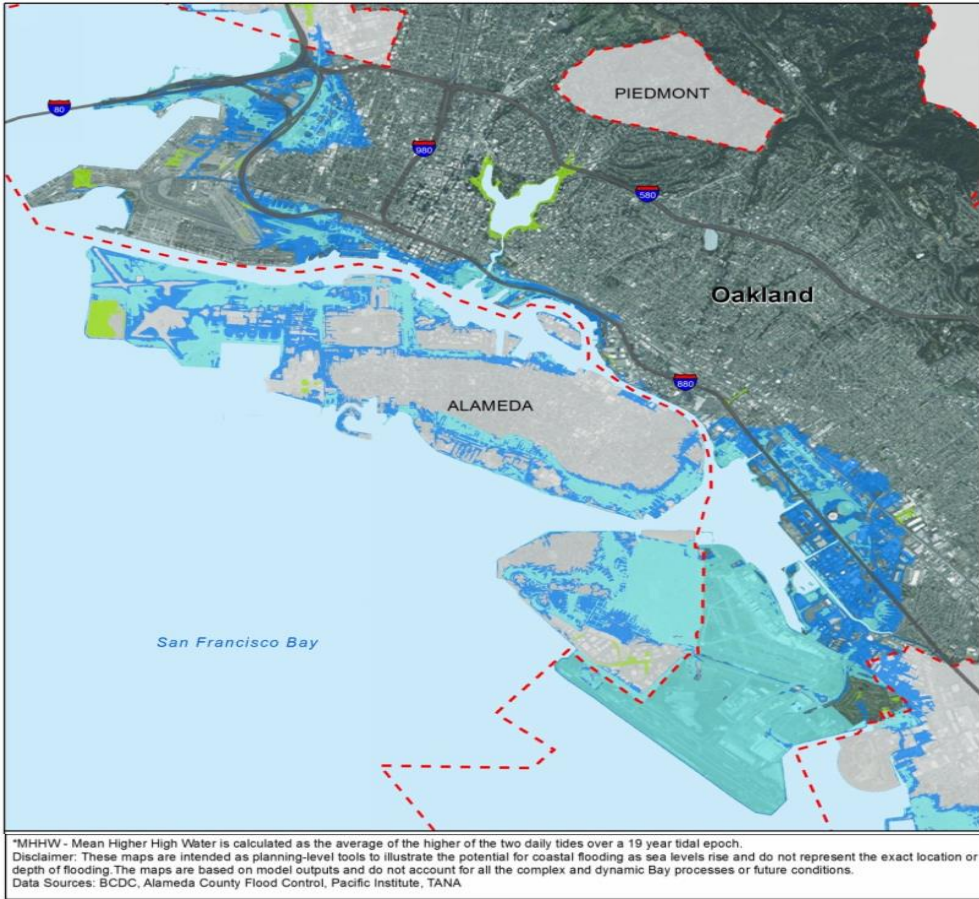
In your neighborhood:

1. What do you **love** and want to protect?
2. What **changes** do you want to see?



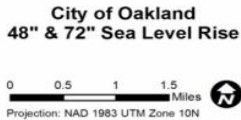
Report Out: What's your vision?





*MHHW - Mean Higher High Water is calculated as the average of the higher of the two daily tides over a 19 year tidal epoch.
 Disclaimer: These maps are intended as planning-level tools to illustrate the potential for coastal flooding as sea levels rise and do not represent the exact location or depth of flooding. The maps are based on model outputs and do not account for all the complex and dynamic Bay processes or future conditions.
 Data Sources: BCDC, Alameda County Flood Control, Pacific Institute, TANA

- Legend**
- MHHW*
 - MHHW* + 48" SLR
 - MHHW* + 72" SLR
 - Low Lying Areas at 72" SLR
 - Oakland City Limits
 - Highways

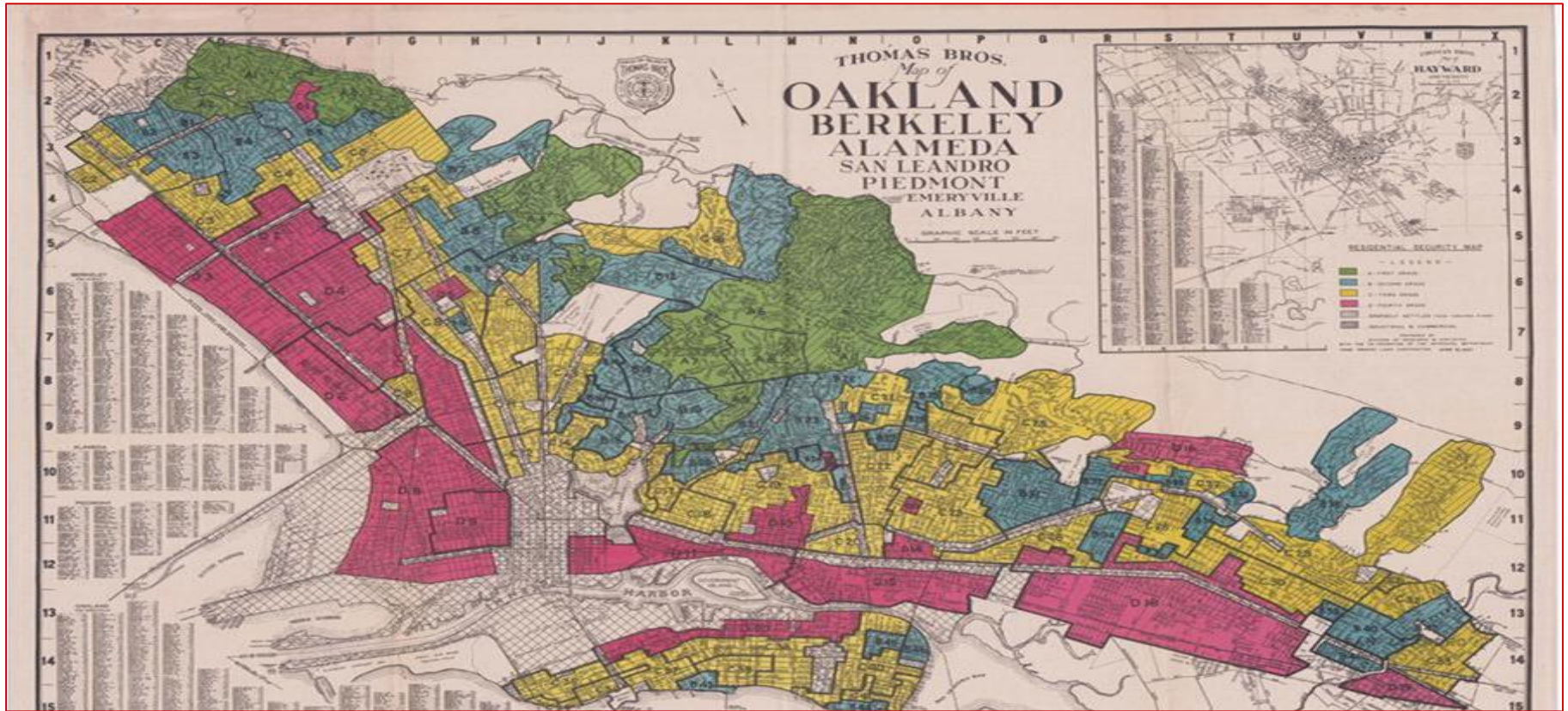


What does the climate crisis mean for Oakland?

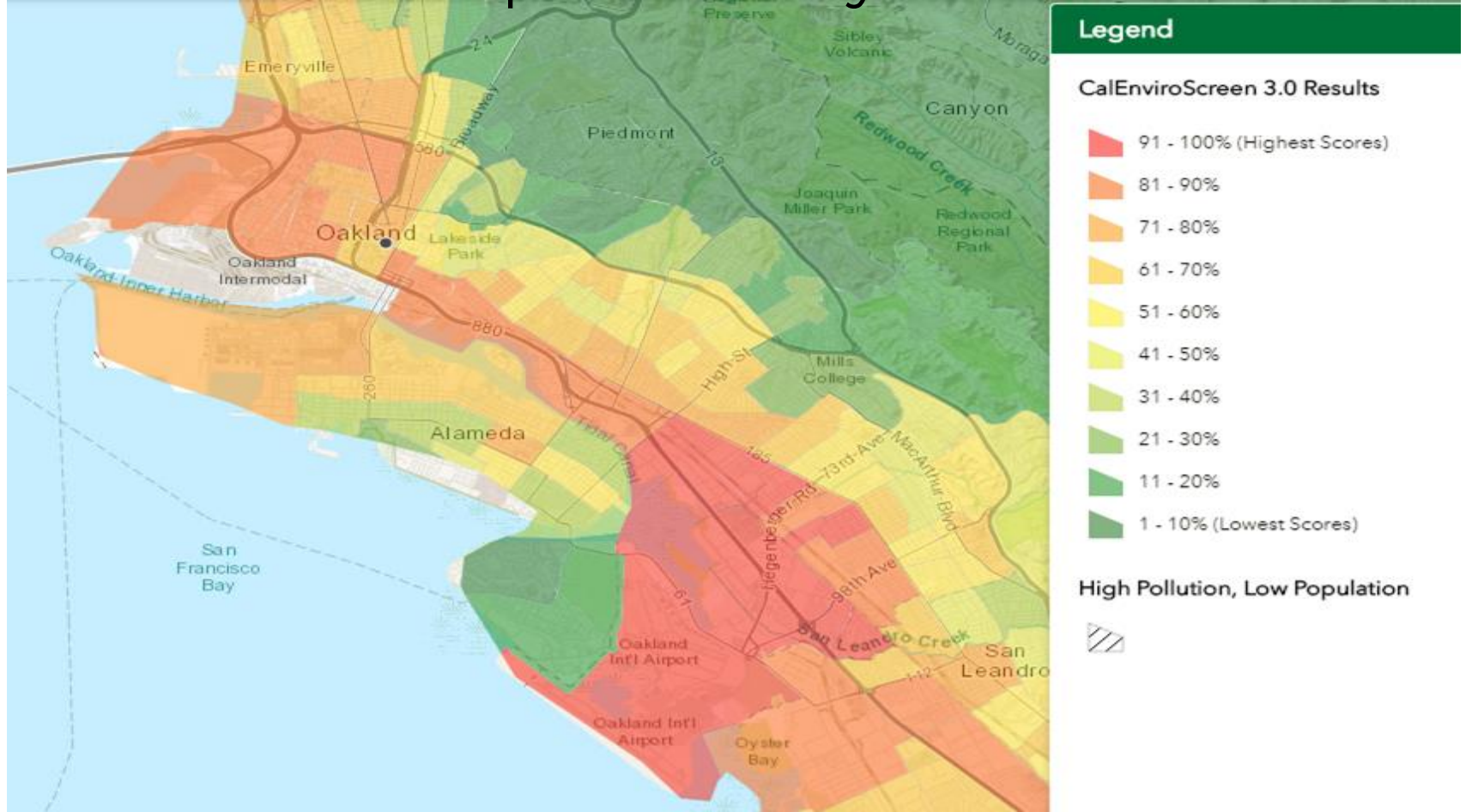
Map of projected Sea Level Rise

King Tide at Jack London Square

The legacy of redlining and institutional racism in Oakland...



...continues to the present day.

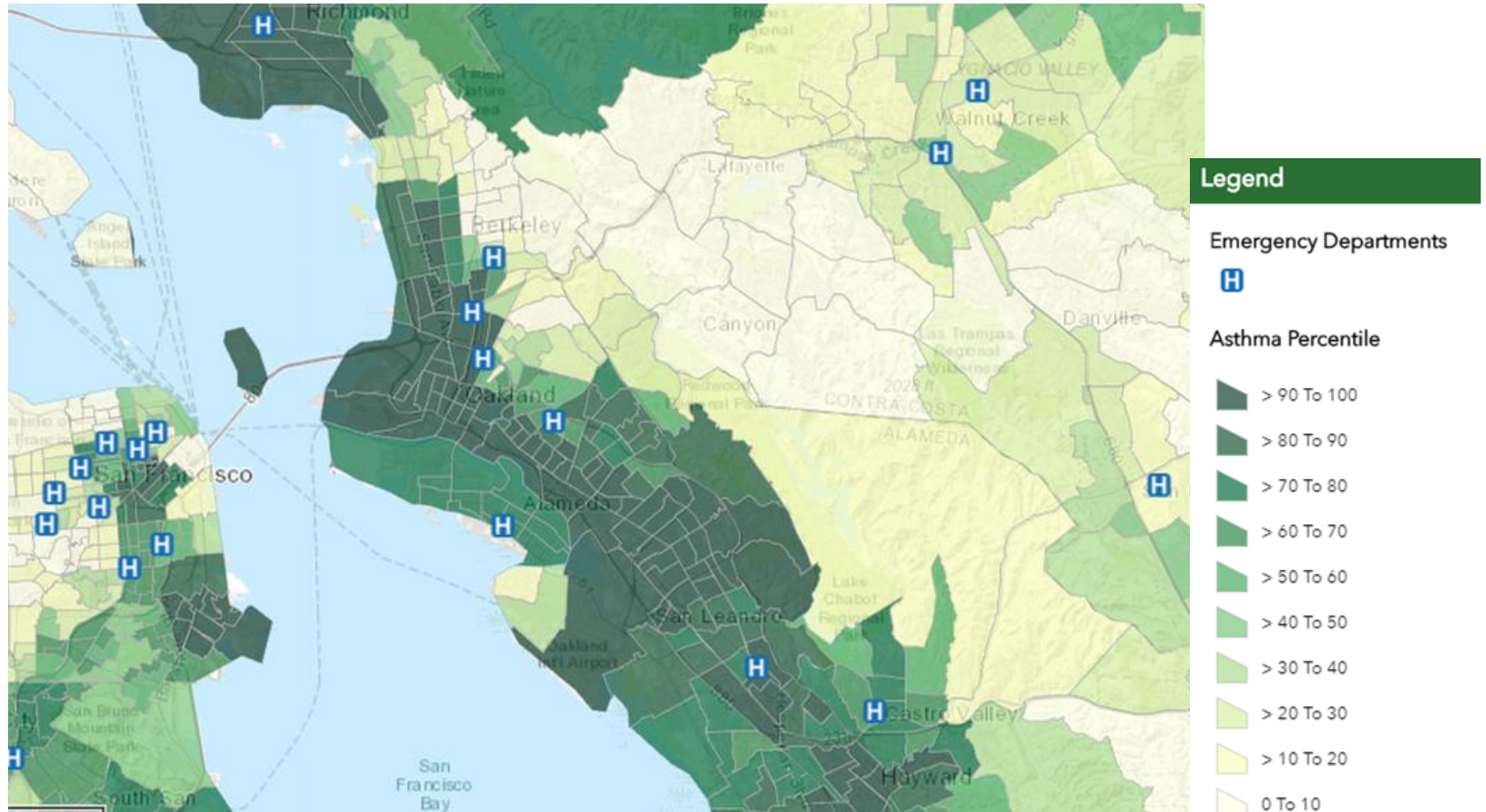


Protect & Strengthen Frontline Communities

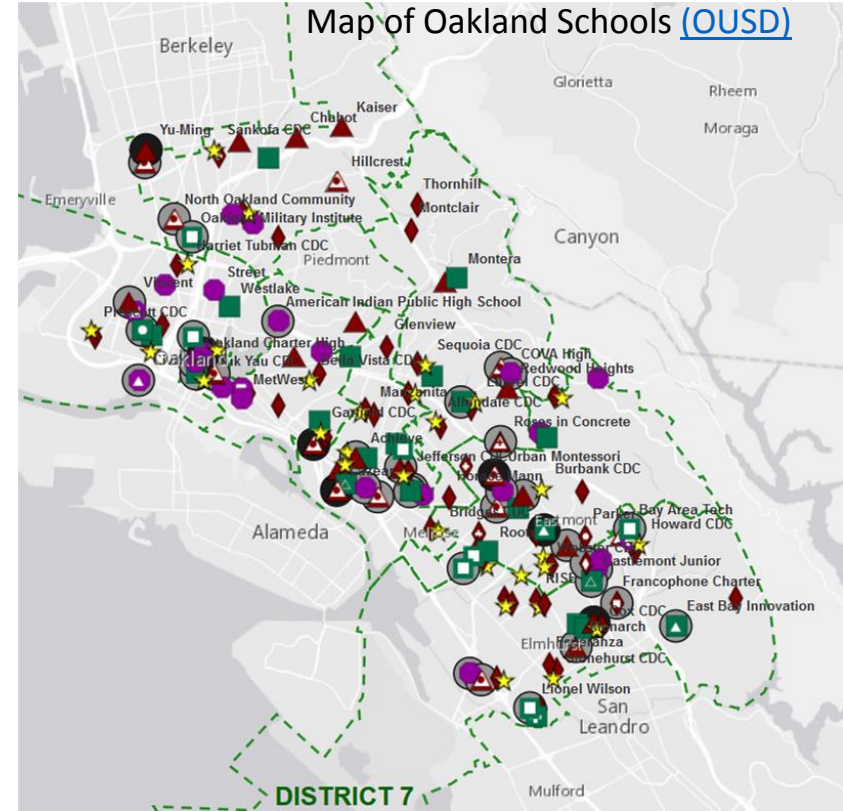
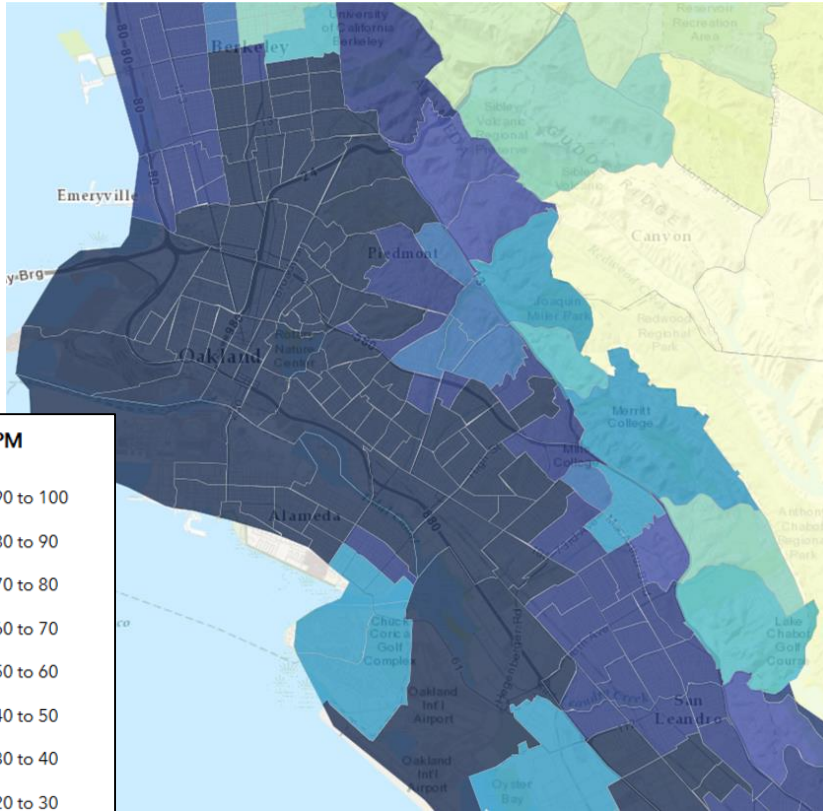
The consequences of climate change will affect us all, but frontline communities will be hit **first and worst** as they may not be able to **adapt, resist, or recover from** the impacts of climate change.

Oakland Demographics	Description
Total Population	425,195
% People of Color	63% (24% African American, 27% Latino/Hispanic)
% Low-income Residents below 300% of federal poverty level	51%
Major Immigrant and Refugee Communities	Mexico, El Salvador, Guatemala, Cambodia, Afghanistan, Burma, Bhutan, Eritrea, Iraq, Nepal, Sri Lanka, Mongolia, Congo, Vietnam

Emergency Room Visits for Asthma

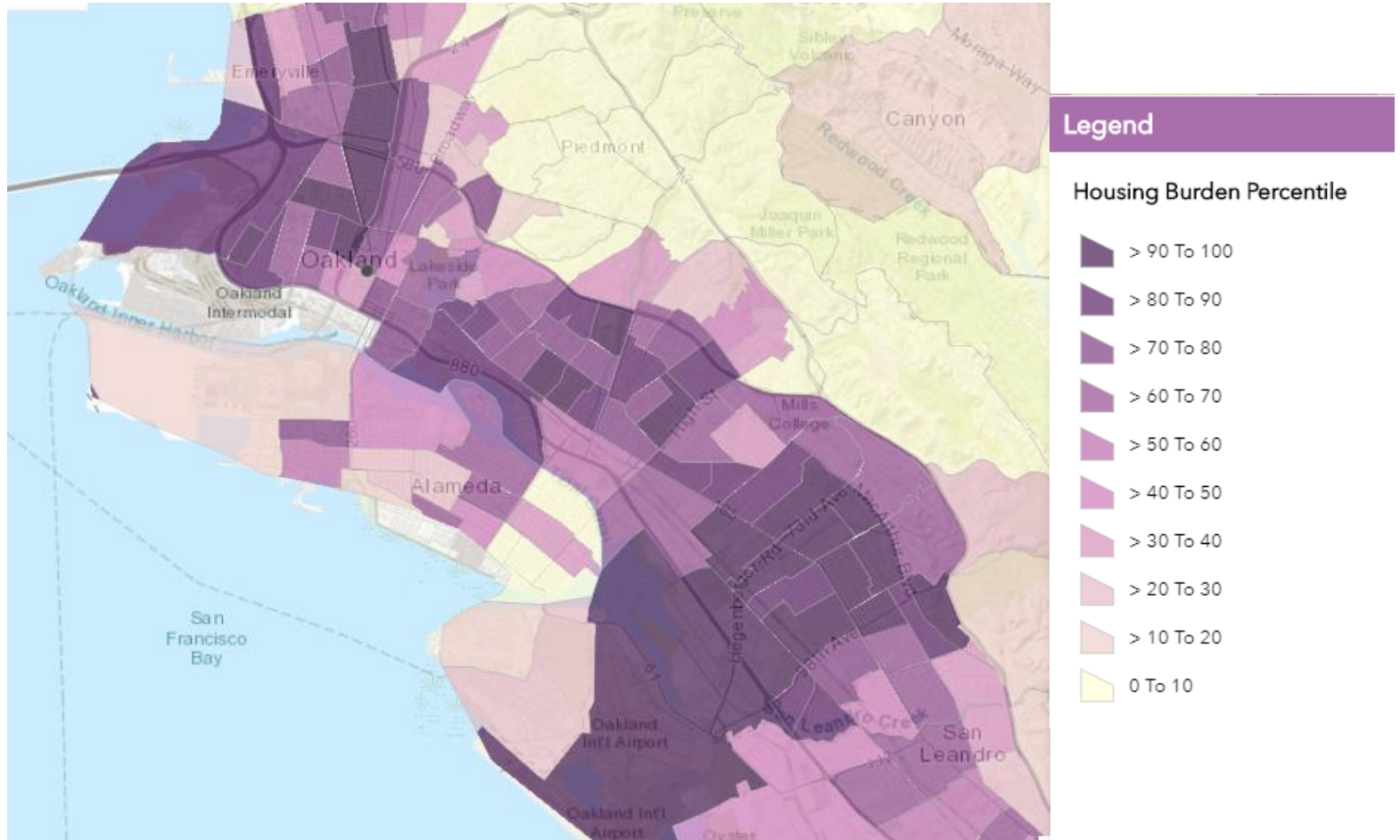


Diesel Particulate Matter



Oakland has one of the highest levels of exposure to DPM in the state

Housing Burden



Fighting climate change **equitably** helps Oakland:

- Create **quality green jobs**, **boost ownership** and **wealth**
- Bolster the local economy
- Build community resilience and disaster-preparedness
- Increase quality of life for ALL
- Improve public health
- Save money
- Improve air quality
- Improve City infrastructure, including quality affordable housing near public transit, and active transportation.



Image from SF Chronicle



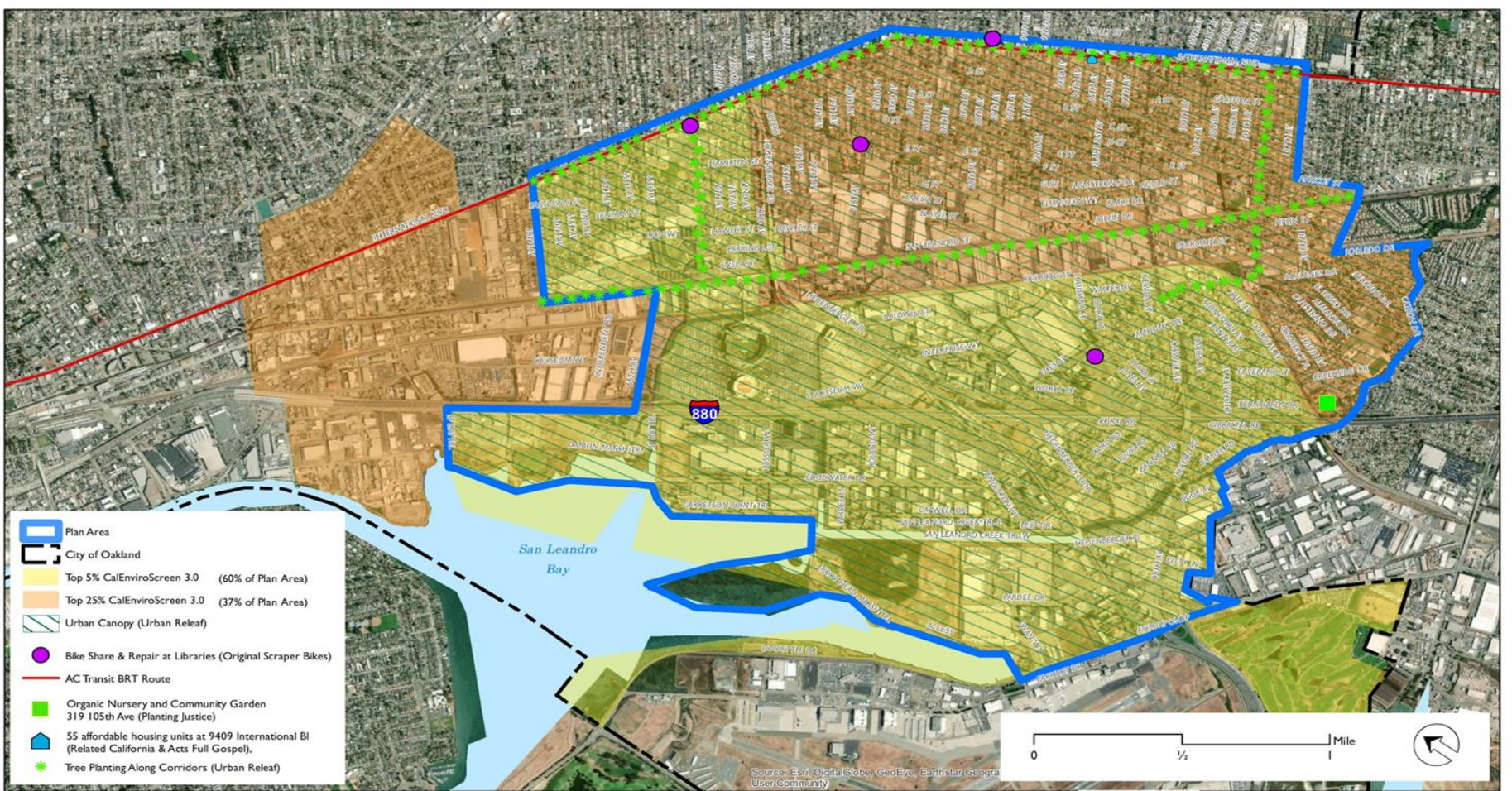
Vision: Oakland's Just Transition Resolution

“Core to a just transition is... the belief that people around the world have a fundamental human right to clean, healthy and adequate air, water, land, food, education and shelter.”



EAST OAKLAND NEIGHBORHOODS INITIATIVE





Rooted In East Oakland - A Transformative Neighborhoods Initiative

Transformative Climate Communities 2018



RELATED



ECAP Prioritization Framework

Climate Actions:

- Reduce **greenhouse gas emissions**
- Create **social, racial, economic, health benefits** for frontline, most-impacted communities
- Strengthen **community resilience** in the face of climate impacts



Energy Use in Buildings

Energy efficiency for renters.
Landlords and tenants equitably share benefits of energy efficiency.

Green Jobs Training & Employment Program
Programs to train and employ low-income residents and youth in energy efficiency & solar jobs.

Community-owned solar that allows renters and neighbors to financially benefit from shared solar energy installations.



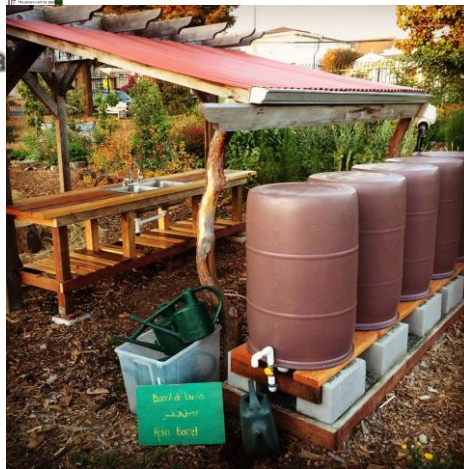
Low cost/free weatherization programs providing caulking, air sealing and insulation to reduce energy costs and improve indoor air quality.



Adaptation, Resilience, Disaster Preparedness

Neighborhood disaster preparedness. Support and expand City and community-led programs that train volunteers, identify vulnerable populations and develop emergency plans, in partnership with emergency response agencies.

Disaster recovery centers. Open air-conditioned and filtered public buildings to provide relief and support residents' needs during extreme heat, fires and disasters. Provide free shuttles for household transit-dependent residents.



Creeks and wetlands restoration. Address threat of flooding from sea level rise and intense weather.

Reduce exposure to local toxic air contaminants, including through green buffer zones and cleaning up toxic polluting facilities.

Support commercial kitchens in underserved areas to stimulate local food microenterprises

Support for urban agriculture in vacant lots, underserved areas to stimulate local food microenterprises



Land Use

Build ecologically sustainable tiny house villages to support housing needs of houseless residents and curbside communities.

Protect existing affordable housing stock and strengthen tenants' rights.



Increase the in-lieu fee for Inclusionary Zoning to ensure affordable housing development in high-opportunity areas, decreasing commute times.

Strengthen protections for tenants and local businesses to prevent them from displacement after natural disasters.



**DEFEND YOUR HOME.
DEFEND YOUR HOOD. DEFEND YOUR PLANET.**



PEOPLE'S CLIMATE MARCH
SEP. 21 2014 // NYC // PeoplesClimateMarch.org

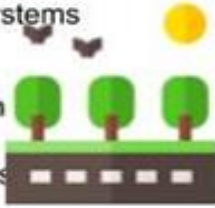
Increase and ensure affordable housing near transit and in new transit-oriented development.

Increase supported multifamily housing for houseless youth, veterans, and other at-risk populations.

Urban Greening & Forestry

Green Jobs Training & Development in urban forestry, tree planting & maintenance, ecosystem restoration, installation of greywater systems and rainwater catchment.

Grow and maintain urban forest, with a focus on reducing urban heat islands by increasing tree cover.



Healthy Soils. Improve soils through composting.



Restore creeks Reduce flood risks from sea level rise and create walking / biking paths & habitat by surfacing and restoring neighborhood creeks.



Purchases & Waste

Green jobs training for development of local businesses that repair & upcycle goods.

Exchange of recyclable goods for bus fare or other climate-friendly public services.

Establish a municipal reuse center with curbside pick up of slightly damaged clothes, electronic devices, toys, and footwear to be repaired and made available at little or no-cost to people in need.



Support or host free classes on repairing damaged goods and clothing and upcycling techniques including sewing and woodwork.

Municipal ban on single-use plastics such as packaging and flatware.

Divert quality unused food from restaurants and grocery stores in Oakland to food banks and pantries for people in need.

Community-Based Projects

Support commercial kitchens in underserved areas to stimulate local food microenterprises.



Support community land trusts for permanently affordable housing, local businesses, growing food, and supporting biological and cultural diversity.

Urban farming & gardens Grow local food production and food access by supporting more community-based farms and gardens on vacant lots.

Sogorea Te' Land Trust

An Urban Indigenous Women-led Land Trust in California's East Bay



Support a public bank to divest public money from fossil fuels and enable local financing of local sustainable economic development projects promoting climate action and creating local benefits.

Support establishment of green, community- and worker-owned cooperative businesses to retain local wealth and build economic democracy.

Climate justice education & curriculum. Teachers and students develop K-12 curriculum with service-learning opportunities and partnerships with the City and community-based organizations for Oakland Unified School District.

Safe & Accessible Transportation

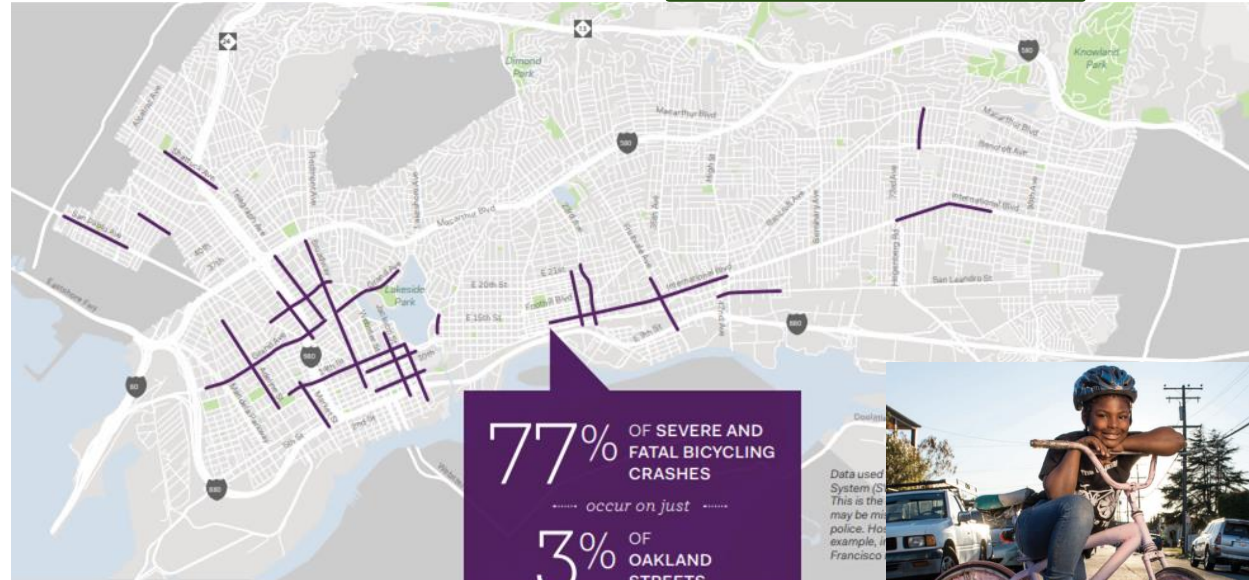
Green transit. Switch to zero-emission buses.

Low-cost or free bus fare. Transit passes or reduced fares for all.

Improve public transit. More frequent, reliable bus service, public safety at bus stops, more destinations, more amenities.



Make streets safer for pedestrians, bikes, wheelchairs, skateboards, and scooters.



HIGH INJURY CORRIDORS

The high injury corridors are identified by weighting all reported bike crashes by their severity and their frequency on Oakland's roadways. Identifying high injury corridors can identify the streets and intersections where improvements can have the most impact in reducing fatalities and serious injuries for people biking. Focusing on corridors helps reveal the broader patterns underlying road safety challenges, and prevents more crashes than a focus on individual intersections alone.

Vote for Solutions

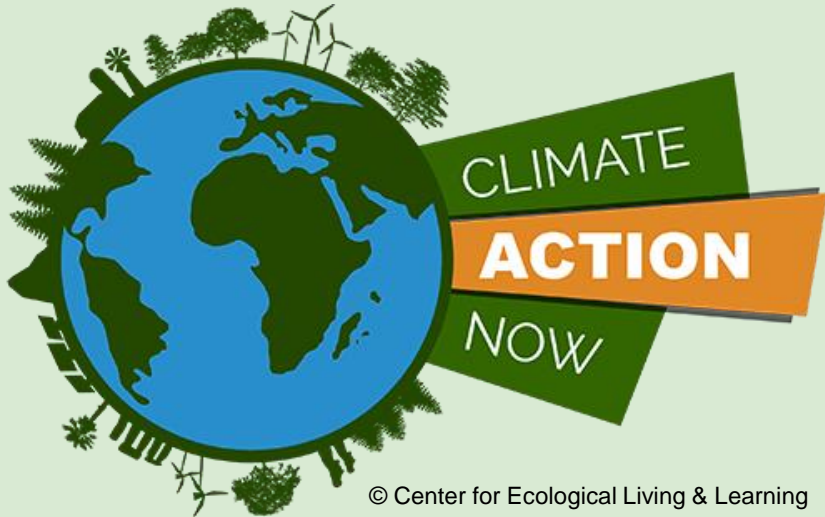


- **At each station, you will have 5 votes, 35 votes total.**
- Add stickers to the solutions you want to support. You may weight your votes by adding more than one sticker.
- Write down any concerns and additional proposed solutions to the board.
- If you have an idea involving a specific location, write it down and add it to one of the District maps.



Making the Vision Real

In small groups, discuss the strategies from each Climate Action Board that you want to see.



© Center for Ecological Living & Learning

1. How can we **work together to implement** these climate actions in Oakland?
2. How can the **City support us to take these actions?** (E.g., funding, space, technical support, regulatory changes... be specific and creative!)



Local Governments Empowering Our Communities

July 31, 2019 – Equitable Climate
Action Plan Citywide Workshop



Bay Area Regional Energy Network

- Collaboration of 9 counties local governments



What's Changing?

- Clean Energy Mandates
- Rise of Renewables



Energy Usage Over Time



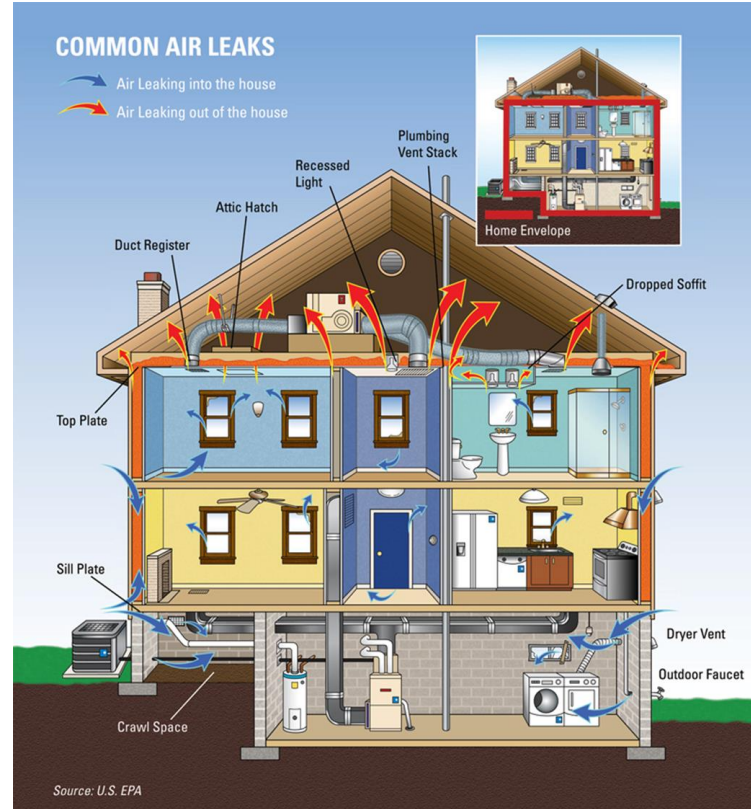
What Does This Mean for Me?

- Time of Use Rates in 2020
- Rewards for shifting electricity use
- Incentivizing storage



Reducing Gas

- Inefficiencies
 - Drafty homes
 - Incomplete or no insulation
 - Leaky ducts



WHAT ARE MY OPTIONS with EAST BAY COMMUNITY ENERGY?



More renewables
than PG&E
lower rates
than PG&E



100%
clean energy
same rate
as PG&E price



100%
renewable
\$0.01/kWh
more than Brilliant 100

Green House Call Components

Walkthrough

Installation

Tips and Resources



Home Energy Score



Score includes

- Scale of 1 to 10
- Home Facts
- Recommendations

**\$200 Assessment
Rebate**

www.HomeScoreCA.org

BAYREN

BayREN Home+

- Up to \$5,000 in rebates to improve energy performance of home
- Save energy and improve home comfort & performance
- Program funded by utility rate payers





Home Upgrade Advisor

- Free, independent advice for completing your Home Upgrade
- Technical and programmatic experts
- Assistance finding a Participating Contractor
- Refers to complementary programs

(866) 878-6008
www.BayRENResidential.org

BAYREN

Spectrum Community Services, Inc.

Home Energy Assistance Program (HEAP)

Weatherization Program (WX)



Home Energy Assistance Program (HEAP)

The **HEAP** program helps Alameda County residents with a one-time payment per program year with their PG&E or Alameda Municipal Power bill. We can also help clients with their 15-day, 48-hour, and Shut-off notices.

Weatherization (WX)

The **WX** program helps homes to be more energy efficient and helps our clients to save money on their energy bills.

Information:

www.SpectrumCS.org; 510-881-0300 or Email us at HEAP@SpectrumCS.org

Spectrum Community Services, Inc. is a private non-profit organization that assists low-income and disadvantaged individuals, families and seniors in their efforts to live independently.



CLEAN CARS FOR ALL

Incentives for low-income Bay Area residents in communities with high levels of pollution to retire their older vehicle and replace it with a clean mobility option.



Thank You!

BayAreaEnergyUpgrade.org

(866) 878-6008

Jeffery Liang

(510) 891-6567

jliang@stopwaste.org



“Savings as a Service”

IN PERSPECTIVE

No. 1 Energy efficiency is the fastest growing jobs sector in energy, accounting for half of the entire energy industry's job growth (133,000) in 2017

11% of energy efficiency jobs held by veterans, greater than the national average of veterans in the workforce (6%)

315,578 manufacturing jobs in energy efficiency, an increase of nearly 10% in 2017 alone

2X Energy efficiency employs twice as many workers in the USA as all fossil fuel sectors combined

PRESENTED BY



WWW.E2.ORG
@E2ORG
#EEJOBSINAMERICA



WWW.E4THEFUTURE.ORG
@E4THEFUTURE
#FACESOFFE

SEPTEMBER 2018

TOP 10 STATES FOR ENERGY EFFICIENCY JOBS

RANK	STATE	TOTAL	ENERGY STAR & EFFICIENT LIGHTING	HVAC, RENEWABLE HEATING & COOLING	ADVANCED BUILDING MATERIALS/ INSULATION	OTHER*
1	California	310,433	69,011	183,278	18,677	39,468
2	Texas	154,565	57,203	63,074	20,152	14,135
3	New York	117,339	35,184	38,030	7,305	12,666
4	Florida	112,620	30,757	66,614	31,167	8,236
5	Illinois	86,916	12,416	7,619	7,440	13,782
6	Massachusetts	84,556	13,637	58,558	10,811	8,501
7	Michigan	84,052	14,009	41,252	48,643	18,856
8	North Carolina	84,020	42,223	34,206	5,885	10,243
9	Ohio	79,653	15,487	31,034	19,718	4,878
10	Virginia	76,621	19,939	30,092	10,568	16,022

ENERGY EFFICIENCY NOW EMPLOYS MORE WORKERS THAN THE FOSSIL FUEL INDUSTRY IN 40 STATES AND THE DISTRICT OF COLUMBIA



The EBCE territory includes several communities that suffer from extreme poverty, and has a high concentration of low-income customers participating in the discounted utility rate program known as CARE, representing ~6% of EBCE's total load.

Total 2016 CARE Accounts		Total 2016 CARE kWh	
ALBANY	662	ALBANY	2,104,533
BERKELEY	6,013	BERKELEY	19,168,010
DUBLIN	1,685	DUBLIN	7,437,586
EMERYVILLE	857	EMERYVILLE	2,967,503
FREMONT	8,847	FREMONT	41,054,670
HAYWARD	14,557	HAYWARD	70,987,547
LIVERMORE	3,454	LIVERMORE	20,331,661
OAKLAND	47,317	OAKLAND	180,471,352
PIEDMONT	78	PIEDMONT	343,801
SAN LEANDRO	8,274	SAN LEANDRO	37,867,687
UNINCORPORATED	12,149	UNINCORPORATED	55,966,164
UNION CITY	4,427	UNION CITY	23,899,994

Figure 16: Tables indicating distribution of low-income CARE customers, as well as annual consumption (kWh) for CARE customers presented by EBCE member jurisdiction.

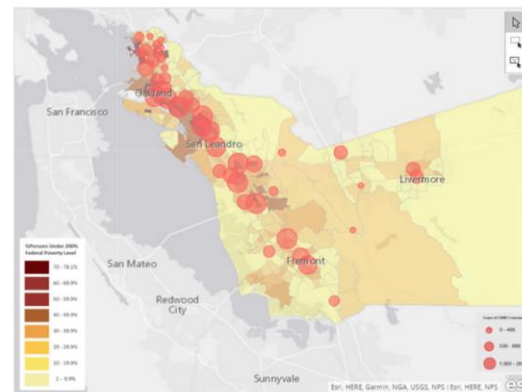


Figure 17: Heat-map showing overlay of high-poverty areas and geographical distribution of CARE customers.



Who we are

"Partnerships like these assist PG&E with reducing energy load off the grid. Revalue.io's proactive diligence with customers helps me to reach small and midsize businesses that are not aware of the resources available for energy efficiency opportunities."

~Dana Cooper, PG&E
Senior Customer Relationship Manager

Thank You!

Please visit the booths to learn about and sign up for programs to increase energy efficiency, renewable energy and save you \$\$\$.



Learn more:

www.oaklandca.gov/projects/2030ecap

Social Media:

Twitter: @2030ECAP

Instagram:
@Oaklanders2030

Facebook:

- OCAC: /climateaction510
- Oakland 2030 Group: /groups/oakland2030/