

Bay Area UASI Equitable Community Resilience Project



Local Roadmaps to Community

Resilience

City of Oakland

Community Assessment Workshop

Date: May 21, 2024





Housekeeping

- Please sign in and take handout packet
- Location of restrooms
- Breaks, snacks and refreshments
- Let's make our own "ground rules"!





Review Handouts

- Agenda
- Key Concepts & Hazard Icons
- Community Snapshot
- Community Map
- Worksheets (1-5)

**Bay Area UASI
Local Roadmaps to
Community Resilience**

Key Concepts & Terminology

- Capacity**
The combination of all the strengths, attributes, and resources available within a community to manage and reduce disaster risks and strengthen resilience.
- Community** (within a given census tract)
The "Whole Community" refers to individuals, community-based organizations, faith-based organizations, as well as law enforcement, fire, medical response, local government and private sector.
- Disaster**
A disruption in the community involving human, material, economic, or environmental losses or impacts, which exceeds the ability of the community to manage the event using its own resources.
- Exposure**
People, property, and systems located in areas with hazards, making them vulnerable to potential harm/loss.
- Hazard**
Natural or man-made sources or causes of harm and difficulty.
- Resilience**
A community's ability to prepare for, adapt to, and recover from hazards.
- Risk**
The potential for damage, loss, or other impacts created by the interaction of hazards with the community. Risk is often expressed in relative terms, such as high, medium, low.
- Vulnerability**
The conditions determined by physical, social, economic, and environmental factors or processes that increase the likelihood of a community to experience the impacts of hazards.

WORKSHEET 1: HAZARD CHARACTERIZATION
"What is affecting us?"

Hazard: Natural or man-made sources of harm and difficulty.

Characteristic	Description
Cause / Origin <i>Location or other reason for hazard</i>	
Warning Signs <i>Preursors to the hazard</i>	
Last Time <i>Time between warning and impact, or time between warning and arrival</i>	
Frequency (and Changes) <i>Does the hazard occur seasonally, once a year, or once every 5 number of years?</i>	
Period of Occurrence <i>Does it occur during a particular time of the year? (ex. wet or dry season)?</i>	
Duration <i>How long is a hazard last? (Days, weeks, months)?</i>	

Community Assessment Workshop: Worksheets 1



Safety Briefing

- Who will dial 911?
- Location: **[1605 Martin Luther King Jr. Way, Oakland, CA 94612]**
- Who is CPR/AED certified?
- Fire extinguishers
- Exits and evacuation procedures





Welcome & Introductions





Introductions

- Name
- Organization/Agency
- What is your favorite aspect of working with/within this community?





Agenda





Agenda

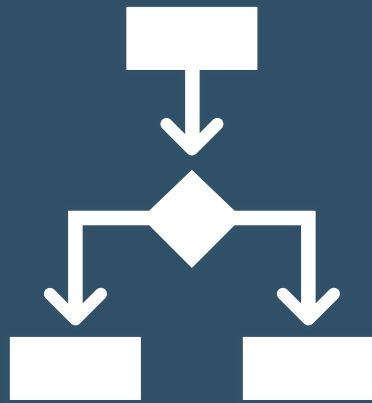


We will work as a group
and establish consensus!

1. Welcome and Introductions
2. Agenda
3. Workshop Purpose & Outcomes
4. Community Profile
5. Assessment Workshop
 - Hazard & Exposure Worksheets
 - Vulnerability & Capacity Worksheets
6. Next Steps



Workshop Purpose & Outcomes





Review Terms

Bay Area UASI Local Roadmaps to Community Resilience



Key Concepts & Terminology



Capacity

The combination of all the strengths, attributes, and resources available within a community to manage and reduce disaster risks and strengthen resilience.



Community (* within chosen census tract)

The "Whole Community" refers to individuals, community based organizations, faith based organizations, as well as law enforcement, fire, medical response, local government and private sector.



Disaster

A disruption in the community involving human, material, economic or environmental losses or impacts, which exceeds the ability of the community to manage the event using its own resources.



Exposure

People, property, and systems located in areas with hazards, making them vulnerable to potential harm/loss.



Hazard

Natural or man-made sources or causes of harm and difficulty.



Resilience

A community's ability to prepare for, adapt to, and recover from hazards.



Risk

The potential for damage, loss, or other impacts created by the interaction of hazards with the community. Risk is often expressed in relative terms such as high, medium, low.



Vulnerability

The conditions determined by physical, social, economic and environmental factors or processes that increase the likelihood of a community to experience the impacts of hazards.



Roadmap Completion

Local Roadmaps to Community Resilience





Workshop Purpose & Outcomes



Assessment Milestone 2

Here We Are!

- Participate in the Community Assessment Workshop (in-person 4 hours)
- Workshop Purpose:
 - Review community profile and data
 - Prioritize hazards and identify how they affect the community
 - Identify and rank hazard characteristics (exposures/vulnerability/capacity)
- Workshop Outcomes:
 - Better understanding of the hazards facing the community
 - Ability to think critically about the capacities and vulnerabilities facing the community

Community Profile





Key Research

- [Climate and Economic Justice Screening Tool](#)
- [National Risk Index](#)
- [Community Disaster Resilience Zones](#)
- [Adapting to Rising Tides](#)

- [Resilience Analysis and Planning Tool](#)

[UASI Regional Resilience Tool](#)



Local Data

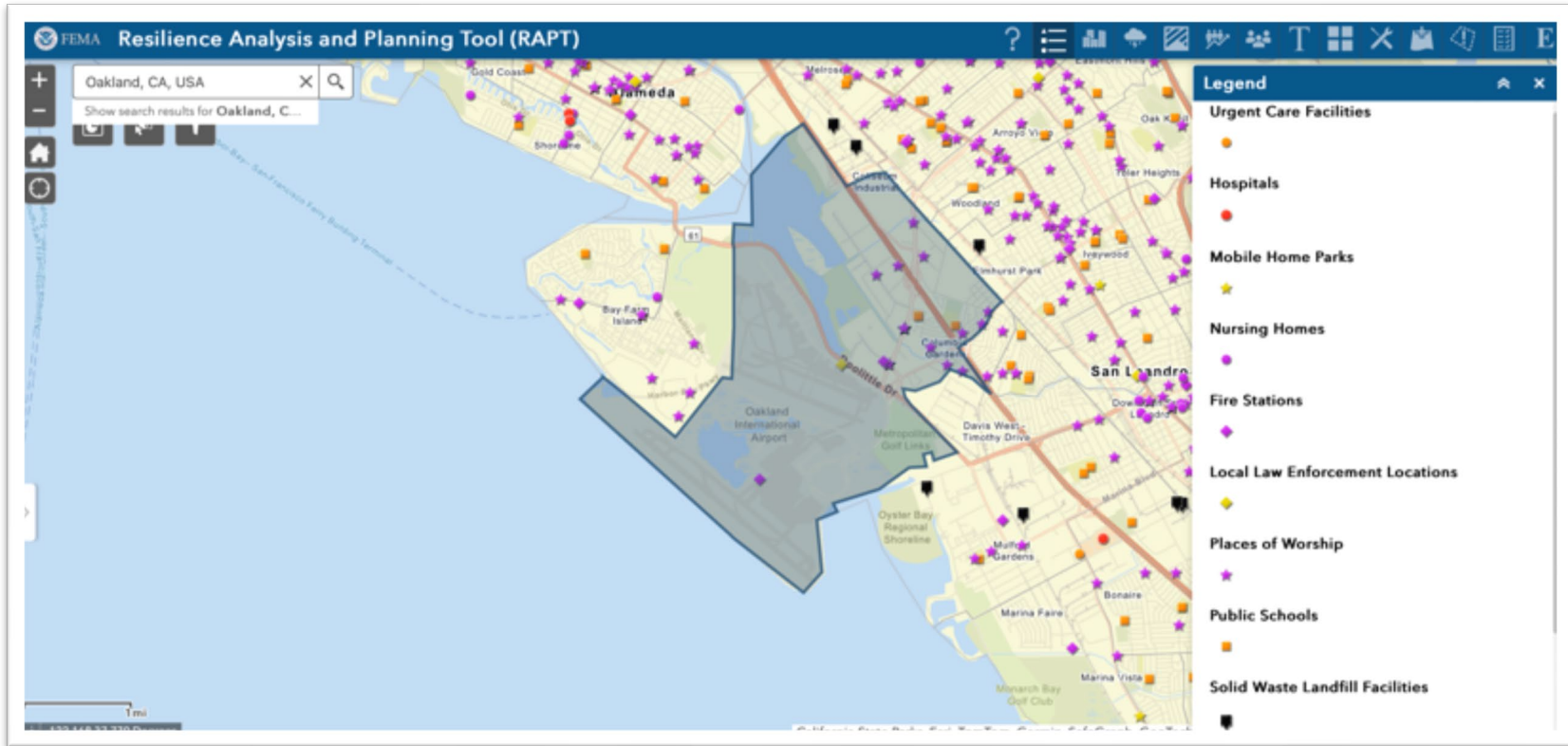
- Did you provide any local data?
 - Research
 - Community studies
 - COVID best practices or novel approaches





Community Map

Refer to the **Community Map** for this discussion



Note: Data from the Resilience Analysis and Planning Tool , [RAPT](#)



CEJST Disadvantaged Community



Climate Change



Energy



Health



Housing



Legacy Pollution



Transportation



Water and Wastewater



Workforce Development

Note: Data from the Climate and Economic Justice Screening Tool, [CEJST](#)



Community Snapshot

Refer to the **Community Snapshot** this discussion

UASI Regional Resilience Tool
Tract
06001409000

Esri, NASA, NGA, USGS | California State Parks, Esri, TomTom, Garmin, SafeGraph, GeoTechnologies, L... Powered by Esri

Social Vulnerability Assessment (06001409000)

According to the American Community Survey, 5,039 people live in this area.

Socioeconomic Status:

- Percentage of the Population Below 150% Poverty: 27.50%
- Median Income: \$70,769
- Percentage of the Population Unemployed: 7.40%
- Percentage of Housing Cost Burdened Units: 41.10%
- Percentage of the Population 25+ Without a High School Diploma: 30.10%
- Percentage of the Population 25+ Without Insurance: 10.60%

Household Characteristics:
An estimated 1,711 are under the age of 18 or 65+, approximately 36%. This known as the dependent population. 1361 are under 18 (28.60%). 350 are 65 or older (7.40%)

- Percentage of the Population with a Disability: 11.70%
- Percentage of the Single-Parent Households with Children Under 18: 11.70%
- Percentage of the Population Ages 5+ with Limited English Ability: 12.50%

Racial Breakdown:

Racial Minority Population: 98.60%

Black/African American: 30.60% Hispanic or Latino: 58.40% Asian: 5.30% American Indian or Alaska Native 0.00% Hawaiian Native or Other Pacific Islander 0.00% Two or more races: 3.40% Some other race: 0.90%

Housing Type and Transportation:

- Percentage of Housing in Structures with 10 or more Units: 13.90%
- Percentage of Housing Units that are Mobile Homes: 2.50%
- Percentage of Occupied Housing Units with More People than Rooms: 23.70%
- Percentage of the Population Without Vehicle Access: 3.30%
- Percentage of Population Living in Group Quarters: 0.90%

Climate and Economic Justice Screening Tool

This tract is identified as disadvantaged according to the Climate and Economic Justice Screening Tool (CEJST). It has 7 categories that meet the criteria.

- Climate Change
- Energy
- Housing
- Legacy pollution
- Transportation
- Water and wastewater
- Workforce development

National Risk Index (06001409000)

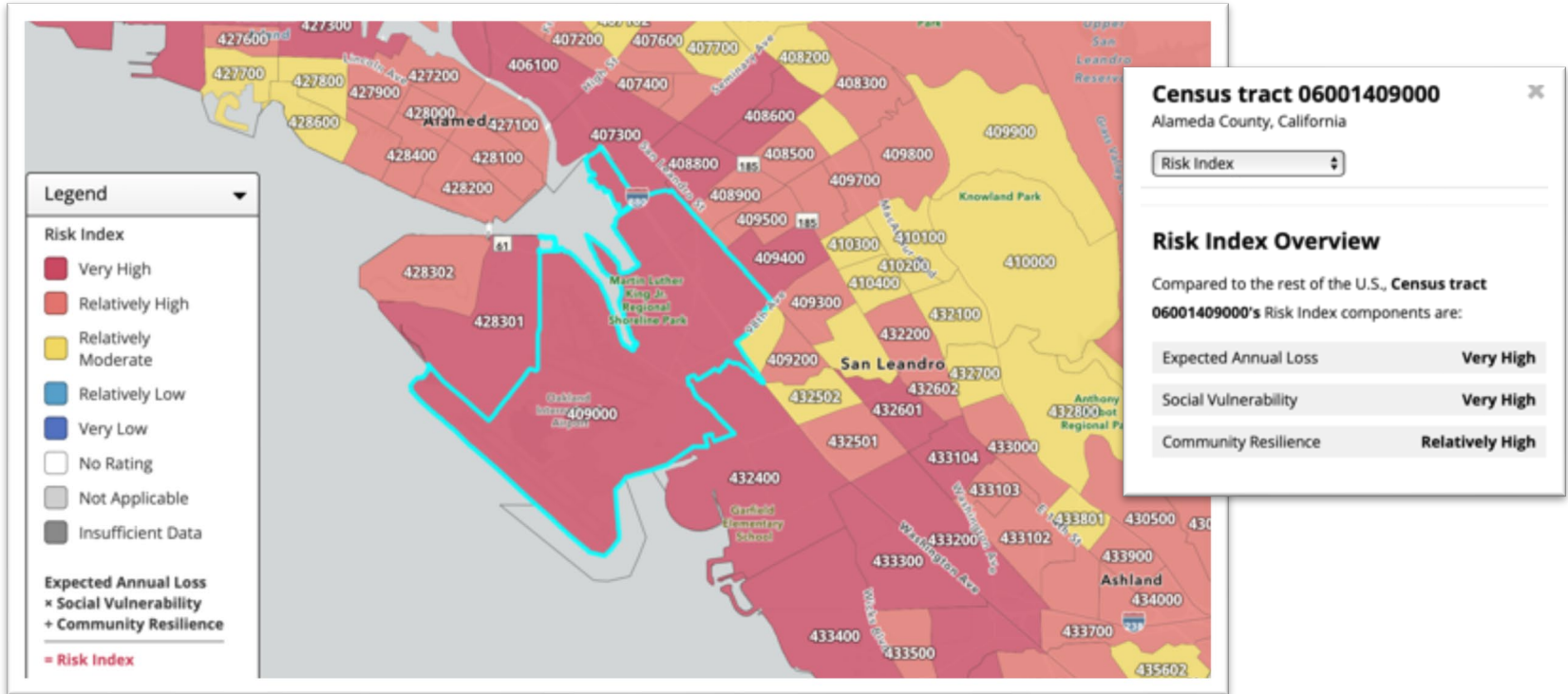
Top Ten Hazards

Hazard	Risk Score	Risk Index Rating
Earthquake	99.97	Very High
Drought	99.04	Relatively High
Coastal Flooding	97.17	Relatively Moderate
Tsunami	94.54	Relatively Low
Riverine Flooding	85.73	Relatively Moderate
Landslide	64.12	Relatively Low
Hail	42.34	Very Low
Wildfire	40.64	Very Low
Heat Wave	38.24	Relatively Low
Tornado	29.96	Very Low

Note: Data from the [UASI Regional Resilience Tool](#)



Community Risk Index



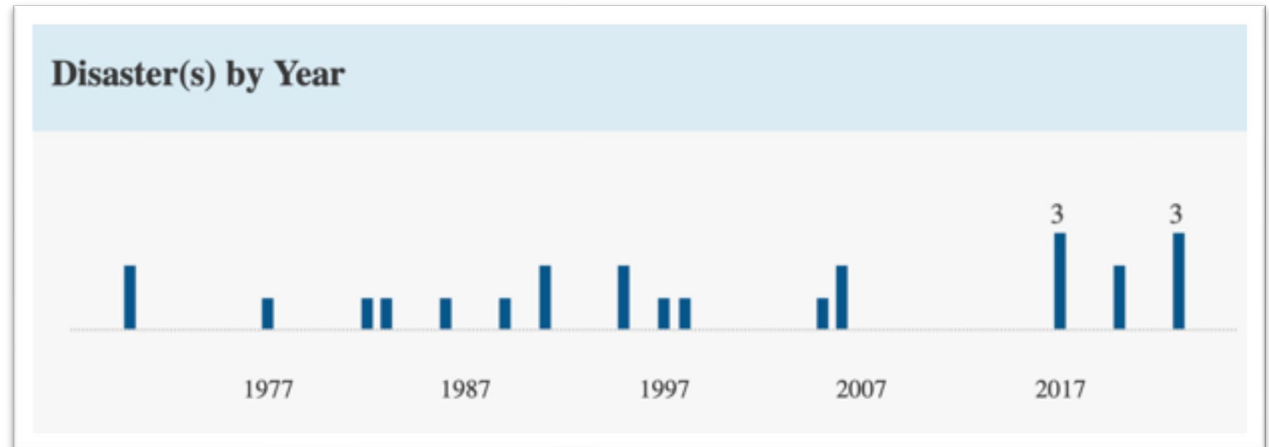
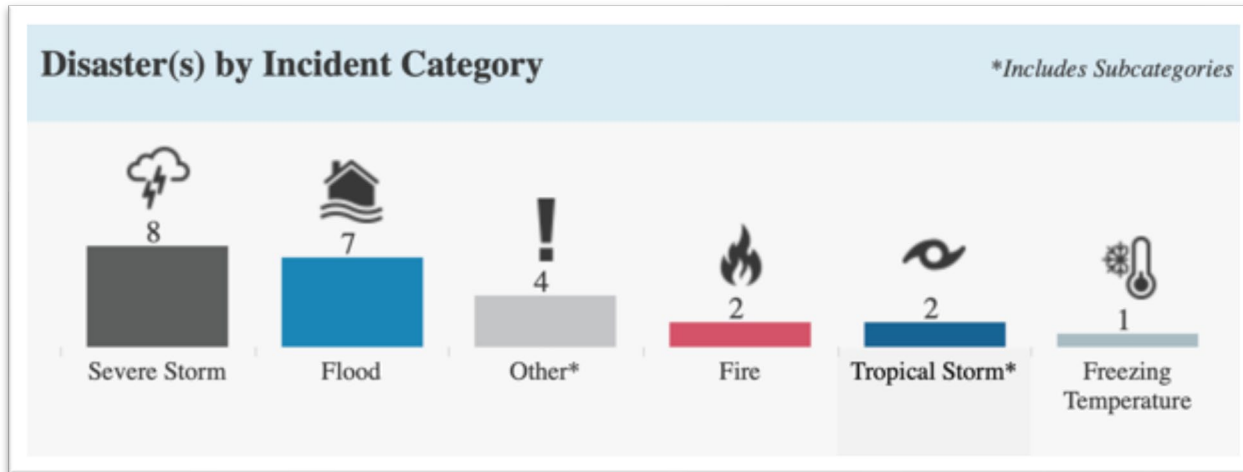
Expected Annual Loss x Social Vulnerability + Community Resilience = Risk Index

Community Risk Index: VERY HIGH

Note: Data from the National Risk Index, [NRI](#)



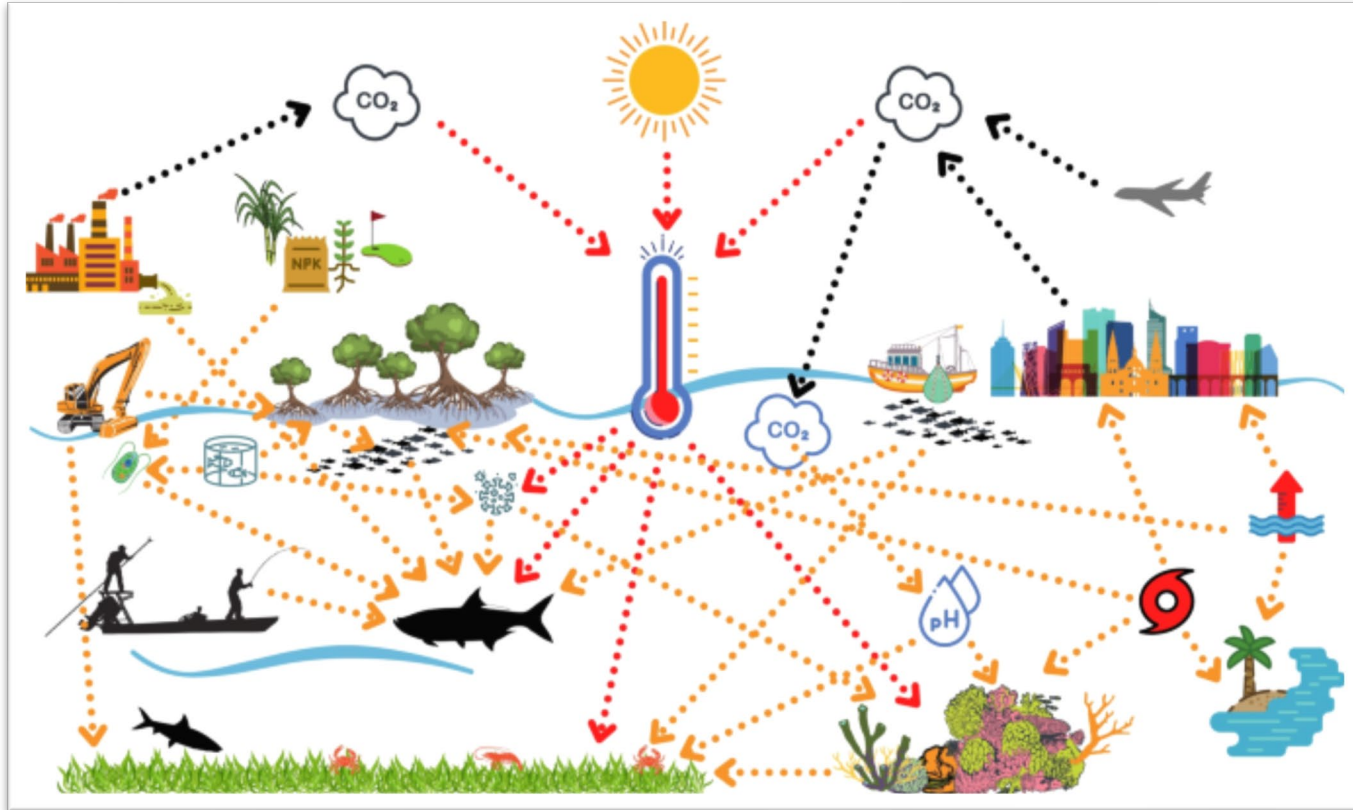
County Disaster Declarations



Note: Data from FEMA, May 1953 – March 2024,
<https://www.fema.gov/data-visualization/disaster-declarations-states-and-counties>



Climate Change Impacts on Community

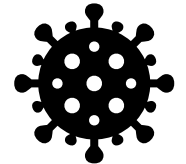


Looking for Climate Change data? Check out the Climate Mapping For Resilience and Adaptation, <https://livingatlas.arcgis.com/assessment-tool/home/>



Data Discussion

- What other hazards does the data miss?
- What information is missing from the data?
- What information is in conflict?
- What surprised you most about the data?





Activity: Hazard Identification

- What hazards do we want to focus our efforts on?
 - This step is important because our hazard(s) will be used to create our roadmap!
 - Could be ANY hazard that impacts the community
 - Use the hazard (icons) handout to help brainstorm
- Take a small post-it note and write down the 1-2 hazard you most want to focus on
- Stick it on the wall





Assessment Workshop





What makes a community resilient?

- **Risk Management & Safety** = A resilient community knows its risks
- **Basic Needs** = A resilient community is healthy and can meet its basic needs of shelter, food, water and sanitation
- **Social Capital** = A resilient community is socially cohesive and connected
- **Infrastructure & Services** = A resilient community has well-maintained infrastructure and accessible services
- **Natural Resources** = A resilient community can manage its natural assets





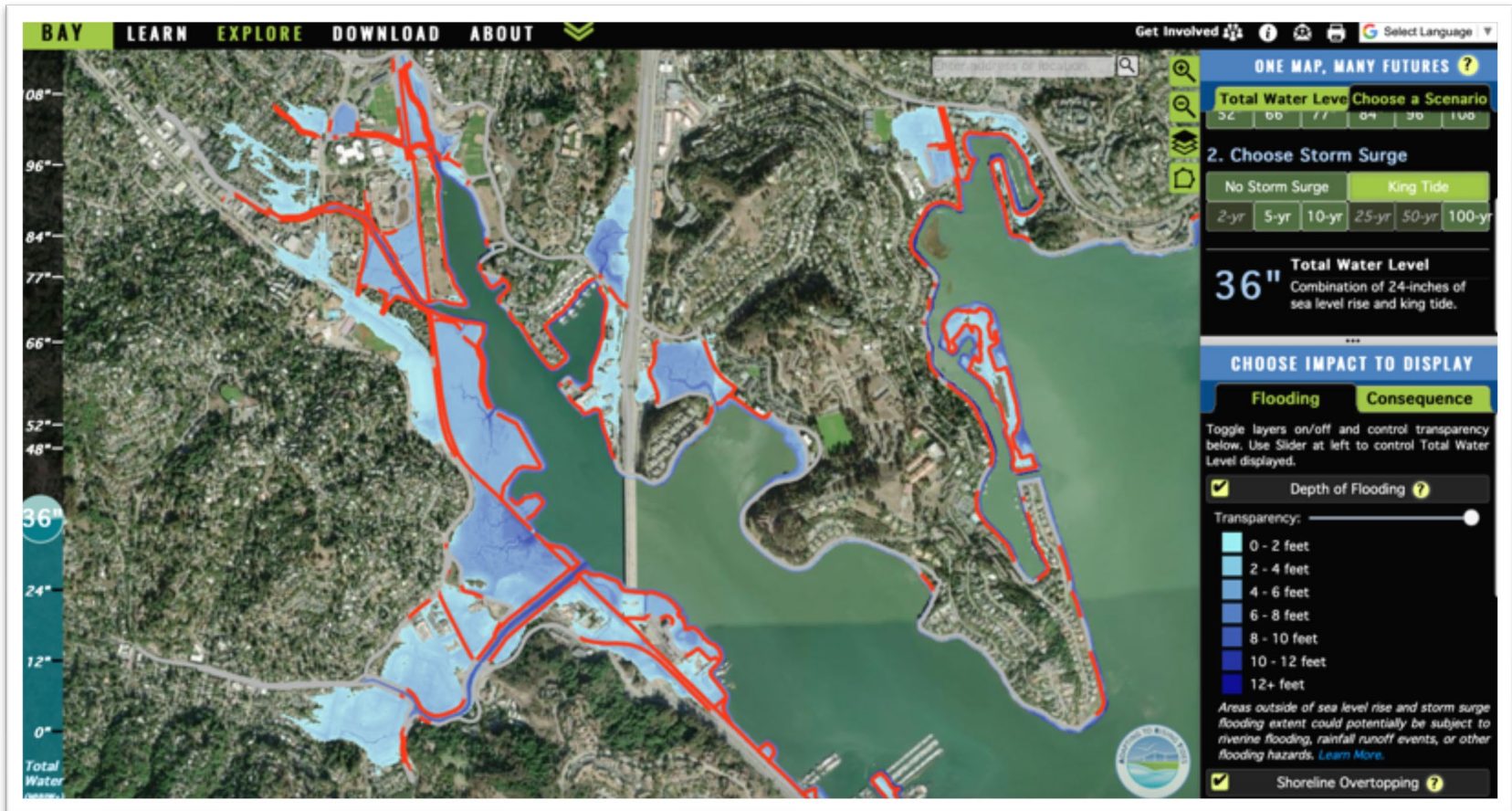
Our Process





Identifying Hazard- Example

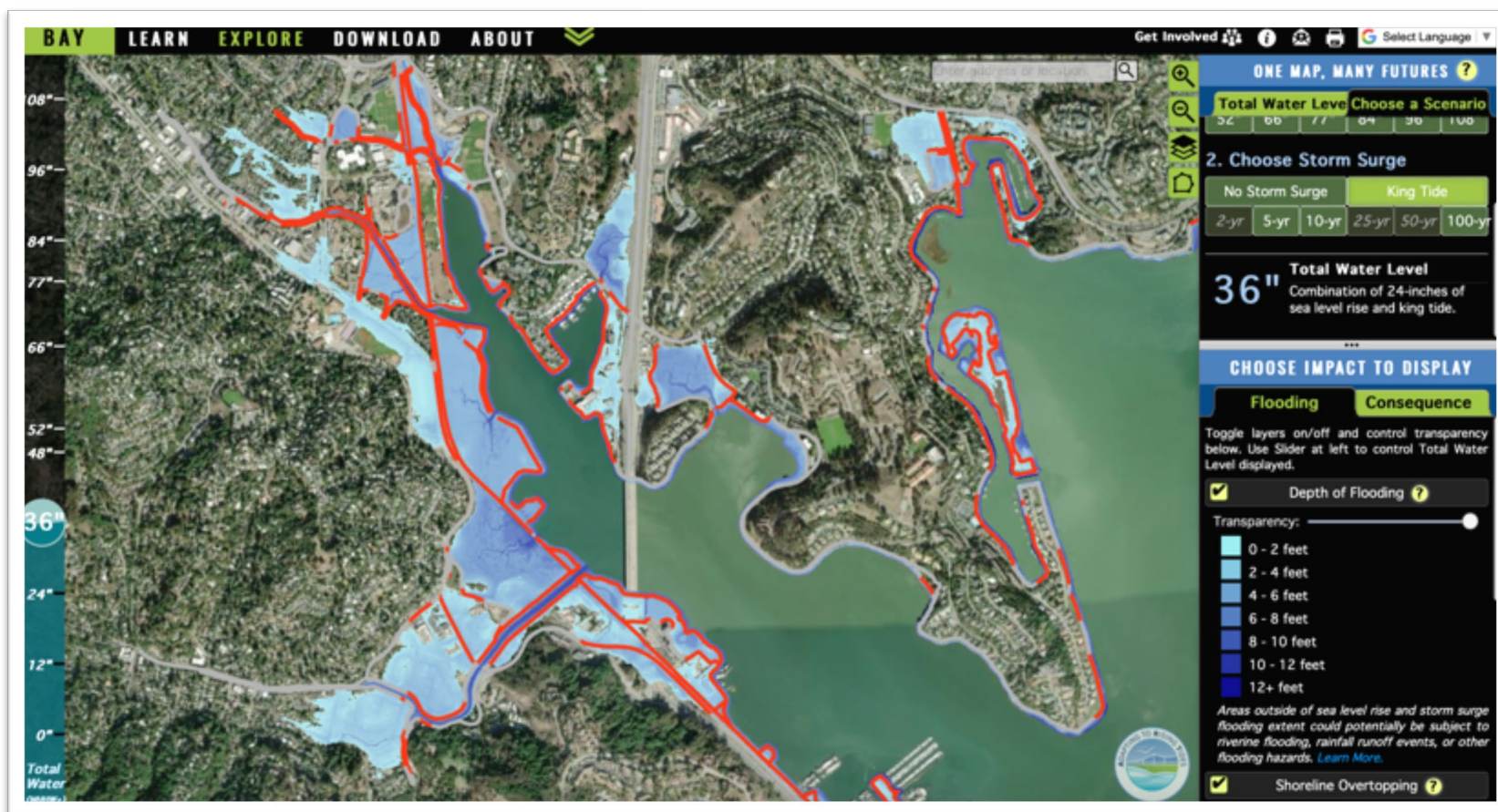
What hazard is affecting us? **Flooding/sea level rise**





Identifying Exposure- Example

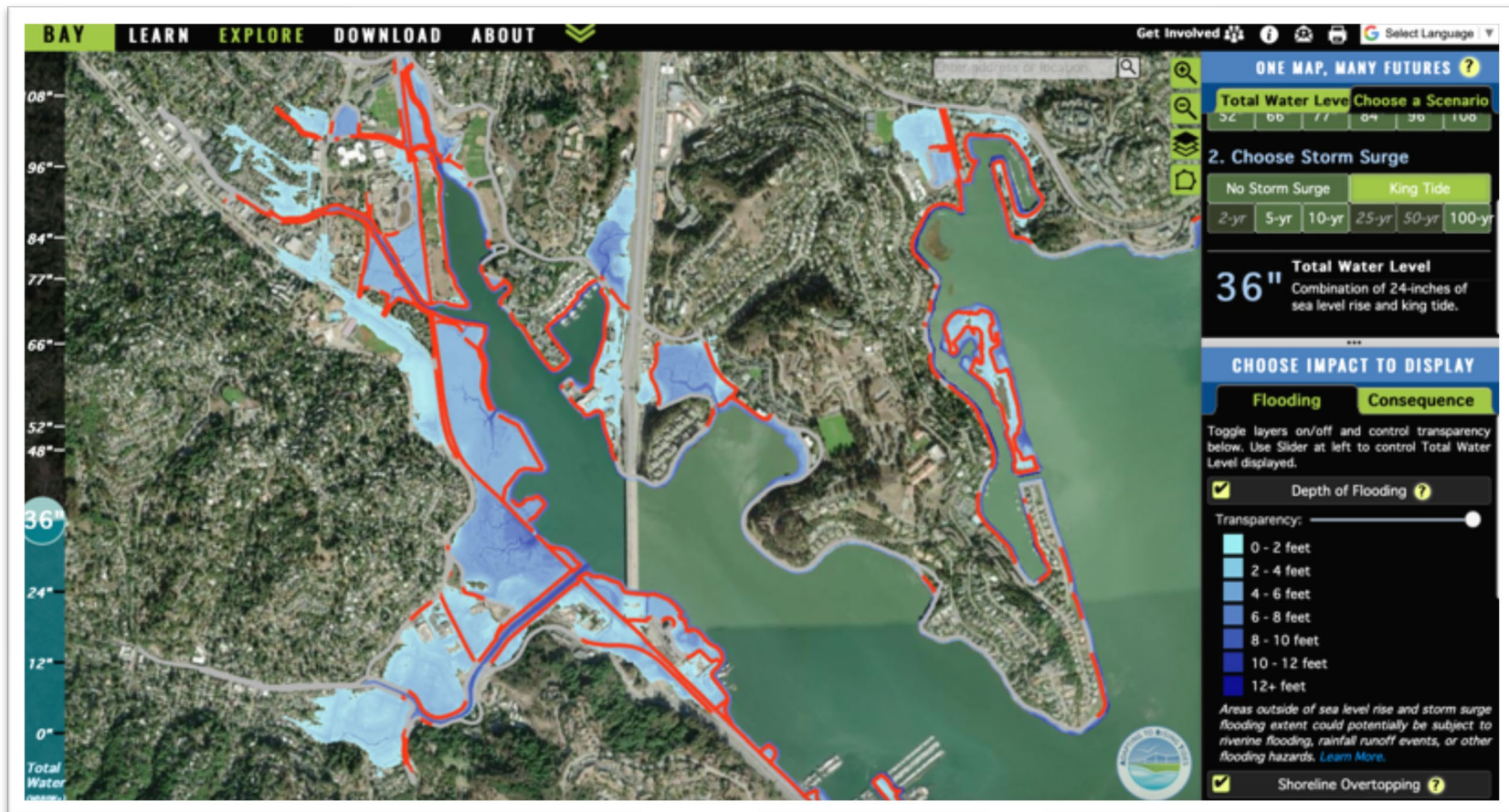
Where is it affecting us? (i.e., geographic area of the census tract)





Identifying Vulnerability- Example

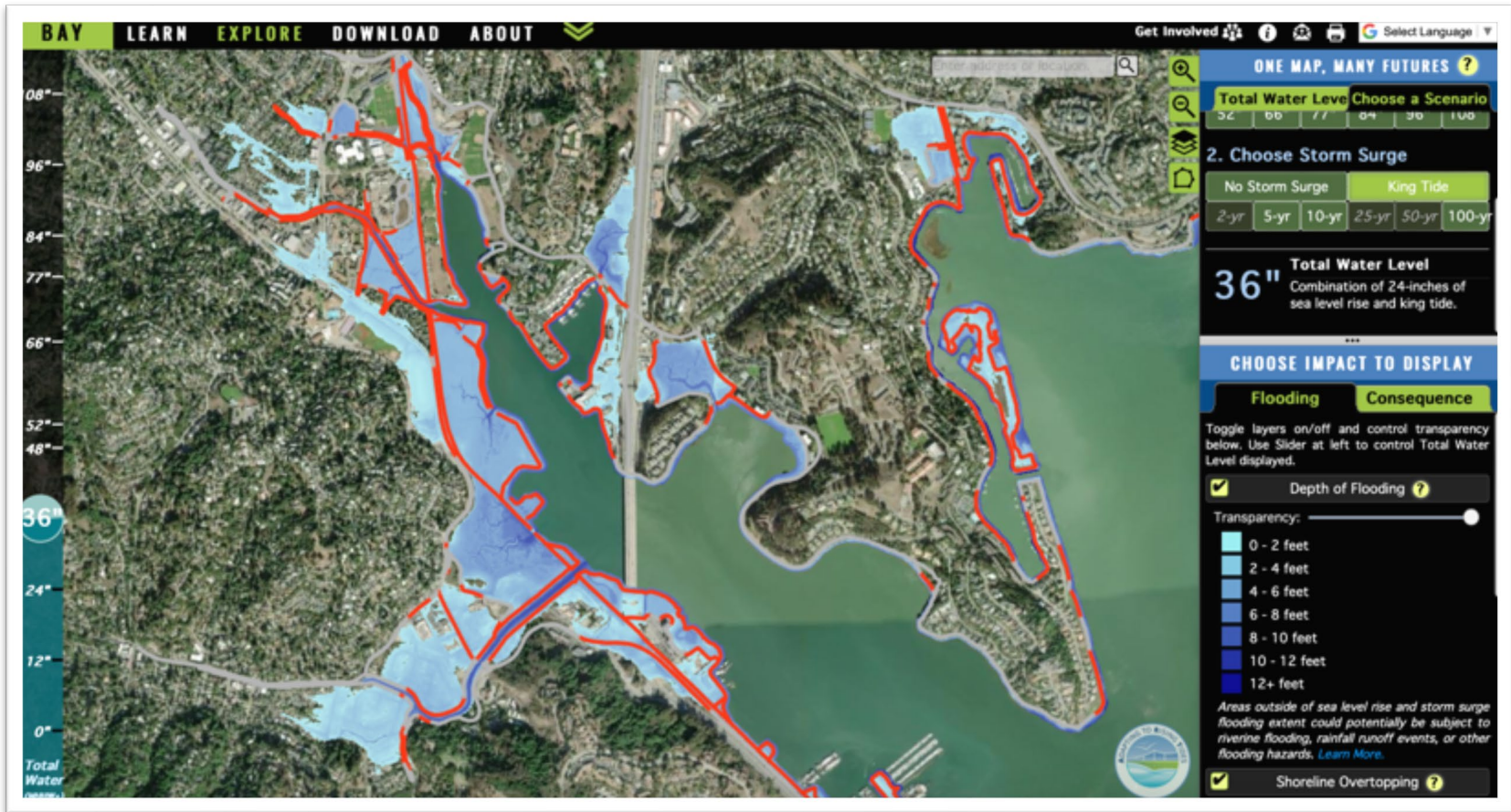
Why is it affecting us? **Low lying areas/no seawalls**





Identifying Capacity-Example

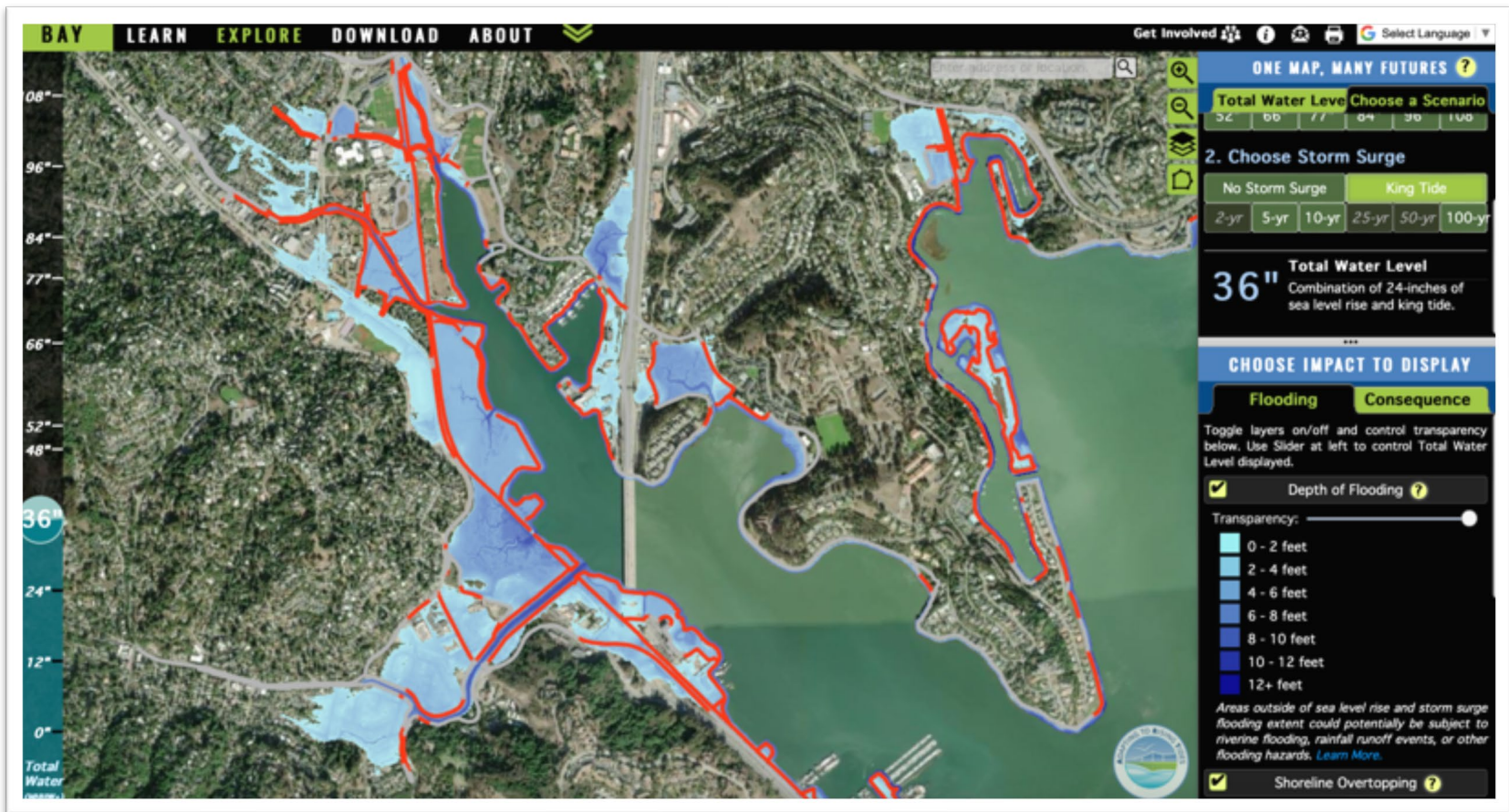
What do we have to face it? **Flood gates/CERT teams**





Identifying Risk-Example

How does it affect us? **Destruction of homes/property**





Assessment Worksheets

Worksheet Hazard: _____

WORKSHEET 1: HAZARD CHARACTERIZATION

"What is affecting us?"

Hazard: Natural or man-made sources of harm and difficulty.

Characteristic	Description
Cause / Origin <i>Location or other reason for hazard</i>	
Warning Signs <i>Precursors to the hazard</i>	
Lead Time <i>Time between warning and impact, or time between warning and arrival</i>	
Frequency (and Changes) <i>Does the hazard occur seasonally, once a year, or once every X number of years?</i>	
Period of Occurrence <i>Does it occur during a particular time of the year? (ex: wet or dry season)?</i>	
Duration <i>How long is a hazard felt? (Days, weeks, months)?</i>	

Community Assessment Workshop- Worksheets

1

WORKSHEET 2: EXPOSURE

"Where is it affecting us?"

Exposure: People, property, and systems located in areas with hazards, making them vulnerable to the hazard.

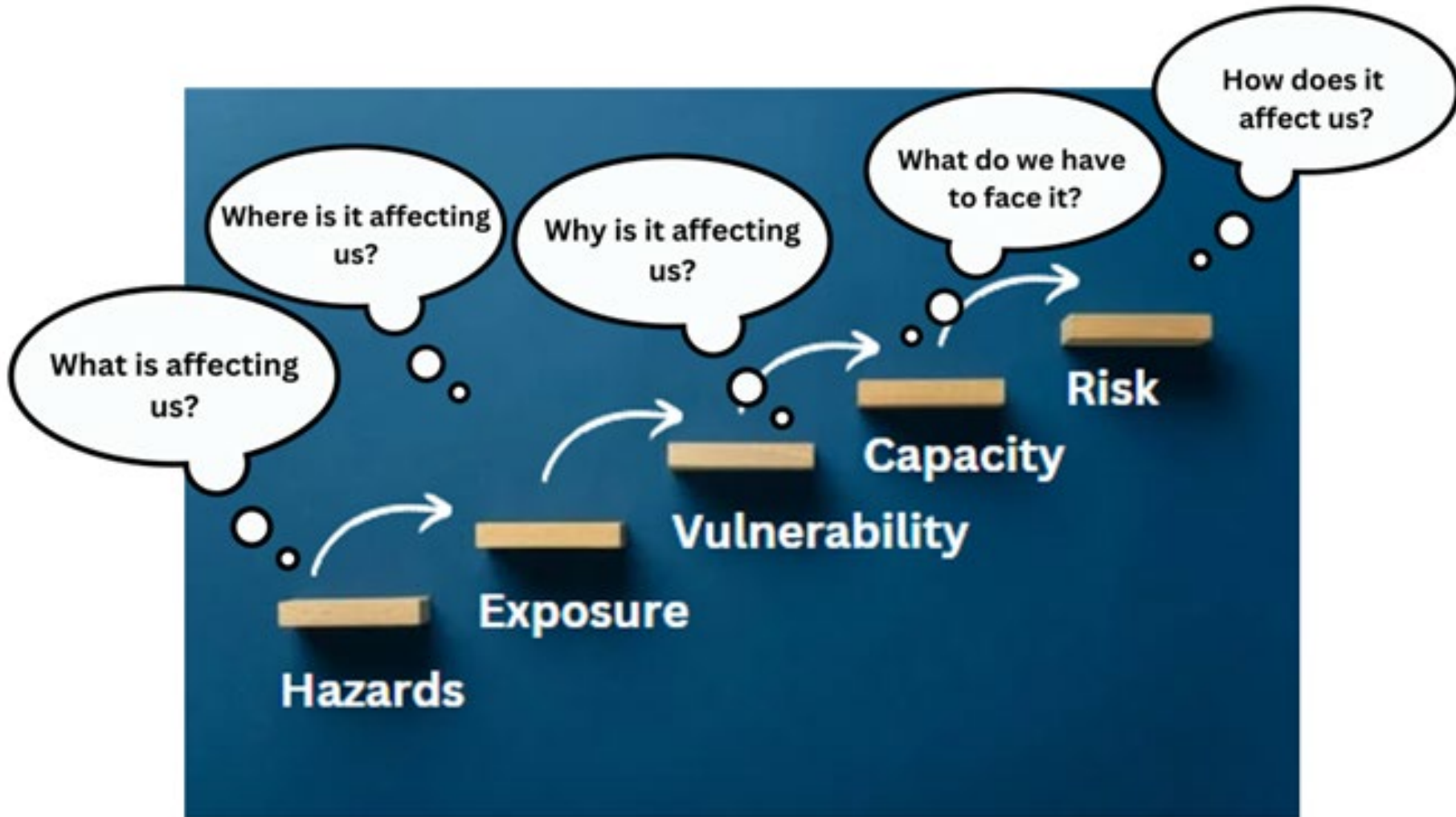
Dimension	Exposures
People <i>Types or demographics of impacted groups</i>	
Property <i>Types and locations of impacted homes, businesses, etc.</i>	
Systems <i>Infrastructure and supply chains</i>	

Community Assessment Workshop- Worksheets

2



Our Process





Next Steps





Afternoon Workshop



Planning Milestone 3

- Participate in the **Community Action Planning Workshop** (in-person 4 hours)
- Workshop will include:
 - Recap of today's outcomes (using a completed version of Worksheet #5)
 - Visioning on what the community wants to achieve in the future
 - Identifying risks and potential solutions/projects and funding needs

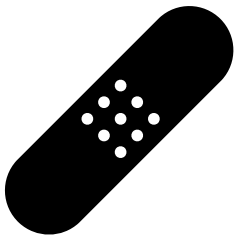


Additional Next Steps

- Following today's workshop, brainstorm **projects** you think will help improve community resilience by:



Strengthening and improving community vulnerabilities



Protecting community capacities and assets



Scheduled Meetings & Locations

Meeting	Dates and Location
Kick-off Meeting	Completed: February 28
Community Assessment Primer	Link to Primer in Dropbox
Community Assessment Workshop	Today!
Community Action Planning Workshop	Today!
Feedback on Draft Roadmap (i.e., virtual meeting or survey tool)	Let's Schedule Today!



Contact Information Consultants



Suhr Consulting Group

Wendy Suhr

Task Lead

wsuhr@scg-sf.com

(415) 680-6271



SF CARD

Heather Lee

Community Partners Lead

heather@sfcad.org

(415) 410-3639



Thank You!

