



**CITY OF OAKLAND
CHILDREN’S INITIATIVE OVERSIGHT COMMISSION
RETREAT MEETING AGENDA
Saturday, July 27, 2024
9:00 AM
Joaquin Miller Community Center
3594 Sanborn Drive, Oakland, CA 94602**

Oversight Commission Members:

Bernadette Zermeno (D-7), Edgar Rodriguez-Ramirez, Jessica Jung (D-2), Kareem Weaver, Kym Johnson (D-4), Lange Luntao, Melanie Moore (D-2), Priya Jagannathan, Rickey Jackson (D-3)

PUBLIC PARTICIPATION

The Children’s Initiative Oversight Commission encourages public participation. The public may observe the meeting in-person or via Zoom. For details on public comment, see below.

OBSERVE: **Please click the link below to join the webinar:**
<https://us02web.zoom.us/j/81794803604>

Or One tap mobile :
+17193594580,,81794803604# US
+12532158782,,81794803604# US (Tacoma)

Or Telephone:
Dial(for higher quality, dial a number based on your current location):
+1 719 359 4580 US
+1 253 215 8782 US (Tacoma)
+1 346 248 7799 US (Houston)
+1 669 444 9171 US
+1 669 900 9128 US (San Jose)
+1 253 205 0468 US
+1 312 626 6799 US (Chicago)
+1 360 209 5623 US
+1 386 347 5053 US
+1 507 473 4847 US
+1 564 217 2000 US
+1 646 558 8656 US (New York)
+1 646 931 3860 US
+1 689 278 1000 US
+1 301 715 8592 US (Washington DC)
+1 305 224 1968 US
+1 309 205 3325 US

Webinar ID: 817 9480 3604
International numbers available:

**CITY OF OAKLAND
CHILDREN’S INITIATIVE OVERSIGHT COMMISSION
RETREAT MEETING AGENDA
Saturday, July 27, 2024
9:00 AM
Joaquin Miller Community Center
3594 Sanborn Drive, Oakland, CA 94602**

<https://us02web.zoom.us/j/kdIGsecsS>

PROVIDE PUBLIC COMMENT: Below are the ways in which to make public comment within the time allotted for public comment on an eligible Agenda item.

Comment in advance:

To send your comment directly to the Oakland Children’s Initiative Oversight Commission and staff BEFORE the meeting starts, please send your comment, along with your full name and agenda item number you are commenting on, to Jennifer Cabán at JCaban@oakland.ca.gov. Please note that eComment submissions close one (1) hour before posted meeting time. All submitted public comment will be provided to the Oakland Children’s Initiative Oversight Commission prior to the meeting.

In-Person:

Each person wishing to speak on items must fill out and submit a speaker's card to staff prior to the meeting. Members of the public can address the Oakland Children’s Initiative Oversight Commission in-person only and shall state their name and the organization they are representing, if any.

If you have any questions about these protocols,
please e-mail Jennifer Cabán at JCaban@oakland.ca.gov.

**CITY OF OAKLAND
CHILDREN'S INITIATIVE OVERSIGHT COMMISSION
RETREAT MEETING AGENDA
Saturday, July 27, 2024
9:00 AM
Joaquin Miller Community Center
3594 Sanborn Drive, Oakland, CA 94602**

Persons addressing the Children's Initiative Commission shall state their names and the organization they are representing, if any.

| | AGENDA ITEM | SCHEDULE | ACTION | ATTACHMENTS |
|----------|--|-----------------|---------------|--------------------|
| 1 | Breakfast & Welcome | 09:00 AM | AD | |
| 2 | Roll Call | 5 Minutes | AD | |
| 3 | Review of Agenda / Agreements / Icebreaker | 25 Minutes | AD | |
| 4 | RBA Implementation Partner Presentation | 60 Minutes | I | Attachment 1 |
| 5 | Evaluation Partner – American Institutes for Research | 60 Minutes | I | |
| 6 | LUNCH | 30 Minutes | | |
| 7 | Building Values Activity | 120 Minutes | AD | |
| 8 | Commission Business | 30 Minutes | AD | |
| 9 | Wrap-Up & Next Steps Call for agenda topics for next meeting | 10 Minutes | AD | |

**A = Action Item I = Informational Item AD = Administrative Item
A* = Action, if Needed**

Do you need an ASL, Cantonese, Mandarin or Spanish interpreter or other assistance to participate? Please email JCaban@oaklandca.gov or call (510) 238-6840 or (510) 238-2007 for TDD/TTY five days in advance.

¿Necesita un intérprete en español, cantonés o mandarín, o otra ayuda para participar? Por favor envíe un correo electrónico a JCaban@oaklandca.gov o llame al (510) 238-6840 o al (510) 238-2007 para TDD/TTY por lo menos cinco días antes de la reunión. Gracias.

你需要手語, 西班牙語, 粵語或國語翻譯服務嗎? 請在會議前五個工作天電郵 JCaban@oaklandca.gov 或 致電 (510) 238-6840 或 (510) 238-2007 TDD/TTY.



EARLY EDUCATION FUND KEY FINDINGS JANUARY – JUNE 2023



OAKLAND UNIFIED
SCHOOL DISTRICT
Community Schools, Thriving Students



CITY OF
OAKLAND
HEAD START





OAKLAND UNIFIED
SCHOOL DISTRICT
Community Schools, Thriving Students



CITY OF
OAKLAND
HEAD START





OAKLAND UNIFIED
SCHOOL DISTRICT
Community Schools, Thriving Students



CITY OF
OAKLAND
HEAD START



Oakland Children's Initiative
Early Education Fund:
Key Findings Summary
January – June 2023



1,943 children
ages zero to five
supported.



\$2.5 million
invested in OUSD
& COOHS



**OAKLAND UNIFIED
SCHOOL DISTRICT**
Community Schools, Thriving Students



**CITY OF
OAKLAND
HEAD START**





Existing Public ECE Program Models Supported

Initial investments from the OCI Early Early Education Fund support existing program models, including

- **Transitional Kindergarten (TK), Child Development Center (CDC), State Pre-K**—all within OUSD— and
- **Early Head Start** and **Head Start.**



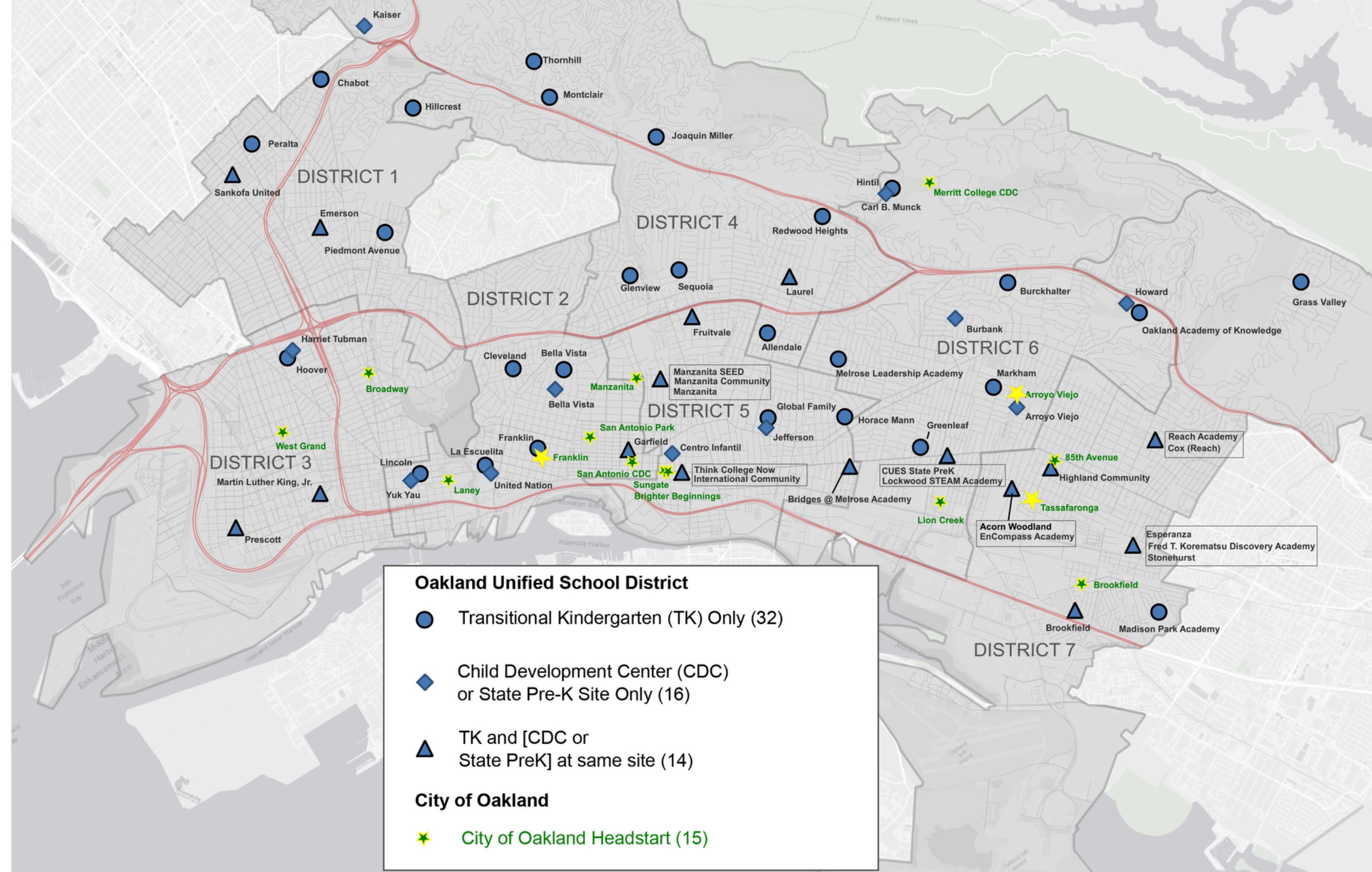
OAKLAND UNIFIED
SCHOOL DISTRICT
Community Schools, Thriving Students



CITY OF
OAKLAND
HEAD START



While it doesn't show up directly in the data, initial investments in COOHS preserved and prevented the closure of three Head Start sites: Franklin, Arroyo Viejo, and Tassafaronga, located in Oakland Council Districts 2, 6, and 7 respectively (marked with a yellow star in the map).





Establish data-sharing agreements with COOHS that address privacy regulations on federally-funded sites and collection of personally- identifiable information.



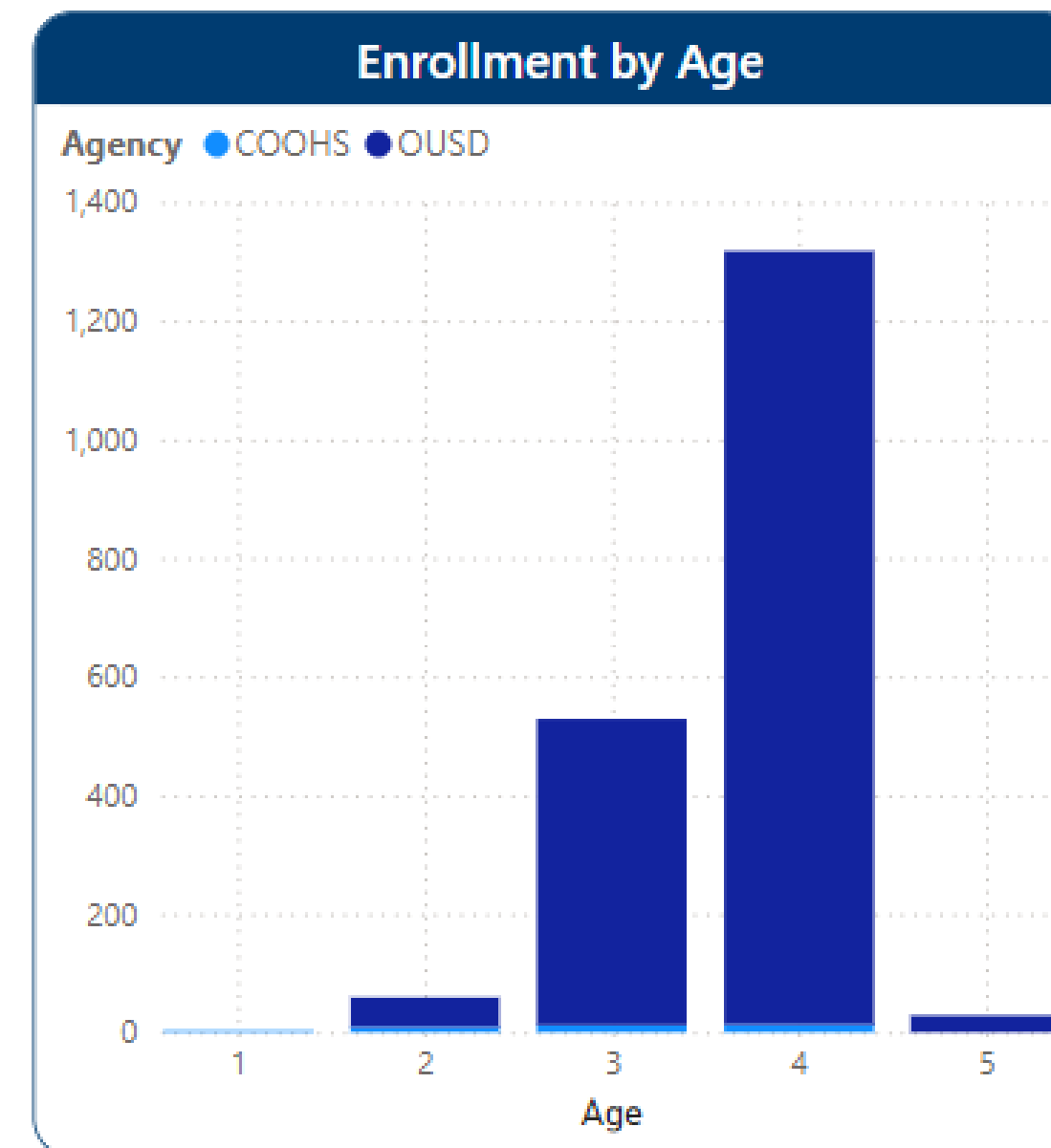
Continue to build more robust data collection, tracking, and systems. Focus on completely and accurately capturing the OCI Funded Capital Improvements, Professional Development Hours, and Satisfaction with Professional Development Opportunities in FY 23-25.



Continue to support the infrastructure needs of COOHS, OUSD, and First 5, to be able to collect, analyze, and report data, find ways to improve efficiency and reduce administrative burden, and align data metrics across the partners

Finding 1: Most children enrolled were 4-year-olds and then 3-year-olds, meet the initiative's target population.

| Enrollment by Age | | | | |
|-------------------|------------|-----------|--------------|------------|
| Agency | COOHS | | OUSD | |
| Age | Enrollment | %of Total | Enrollment | %of Total |
| 0 | | | * | * |
| 1 | 3 | 50% | * | * |
| 2 | 9 | 15% | 51 | 85% |
| 3 | 12 | 2% | 517 | 98% |
| 4 | 13 | 1% | 1,305 | 99% |
| 5 | | | 28 | 100% |
| Total | 37 | 2% | 1,906 | 98% |

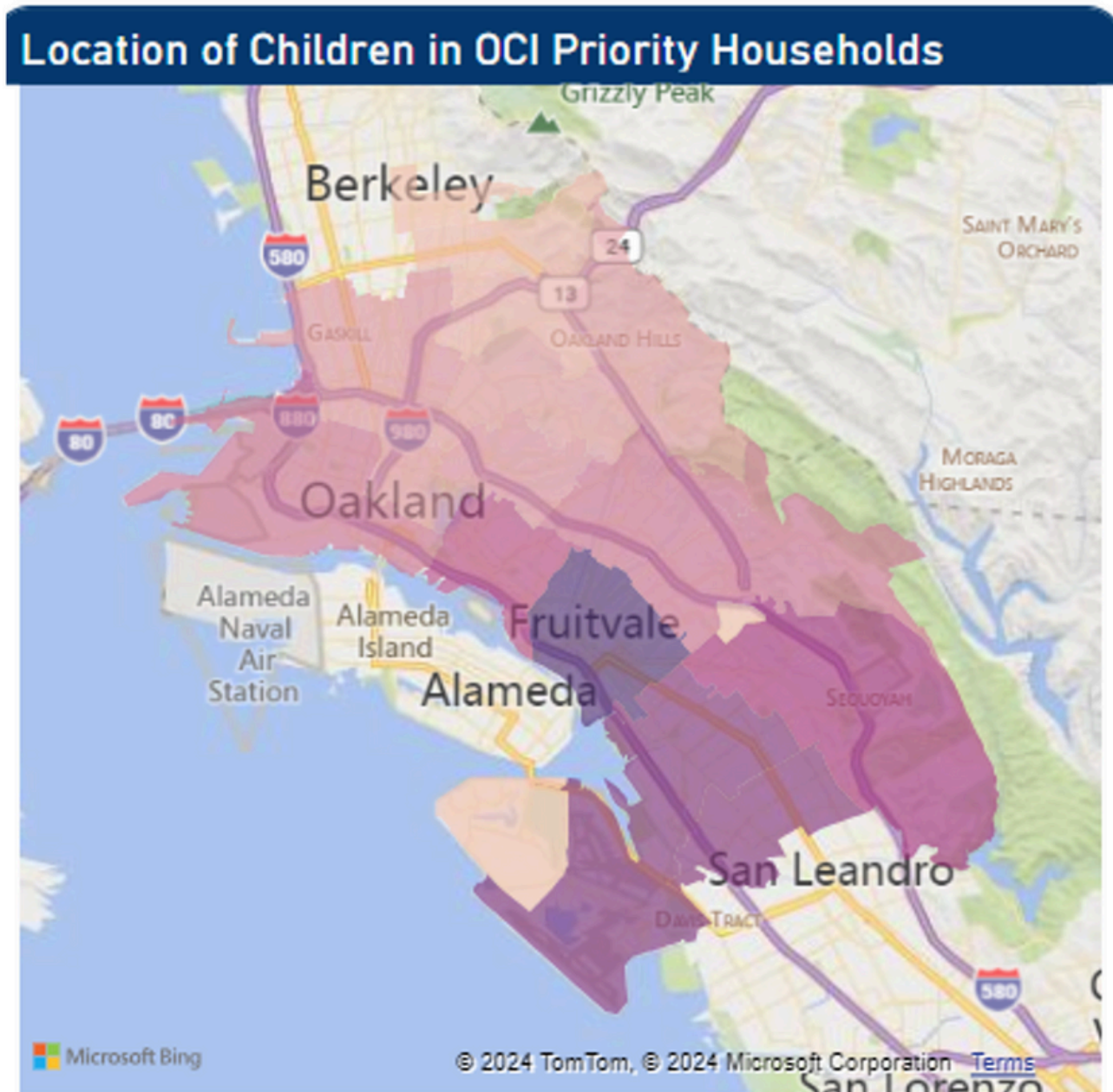


**In accordance with OUSD policies, when there is a total of 10 or fewer students in a particular student group, no OUSD summary data is provided.*



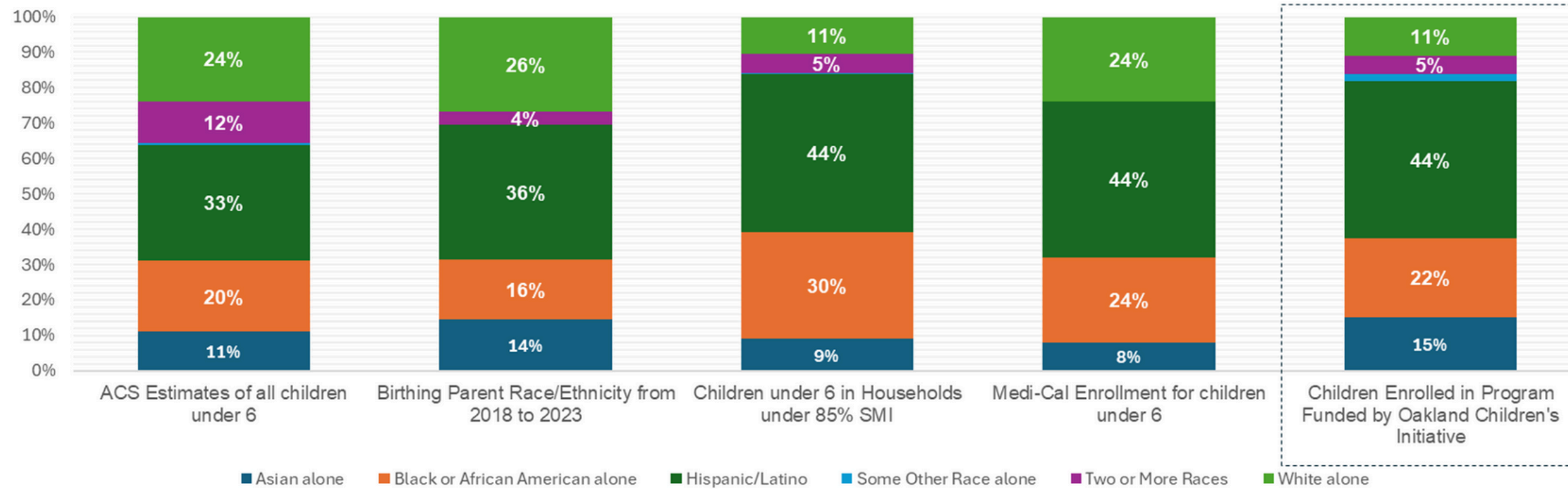
Finding 2: There is alignment of where sites and free/subsidized slots are located, where children enrolled live, and zip codes with higher needs.

Children Under 85% State Median Income (SMI) and Home Zip Code of Children Enrolled



Finding 3: Sites supported with OCI funding generally serve children whose race/ethnicity aligns with households earning under 85% of the State Median Income.

How does the enrollment in systems OCI support compare to other race/ethnicity profiles²



Finding 4: There is a gap between the number of free and subsidized slots and enrollment.

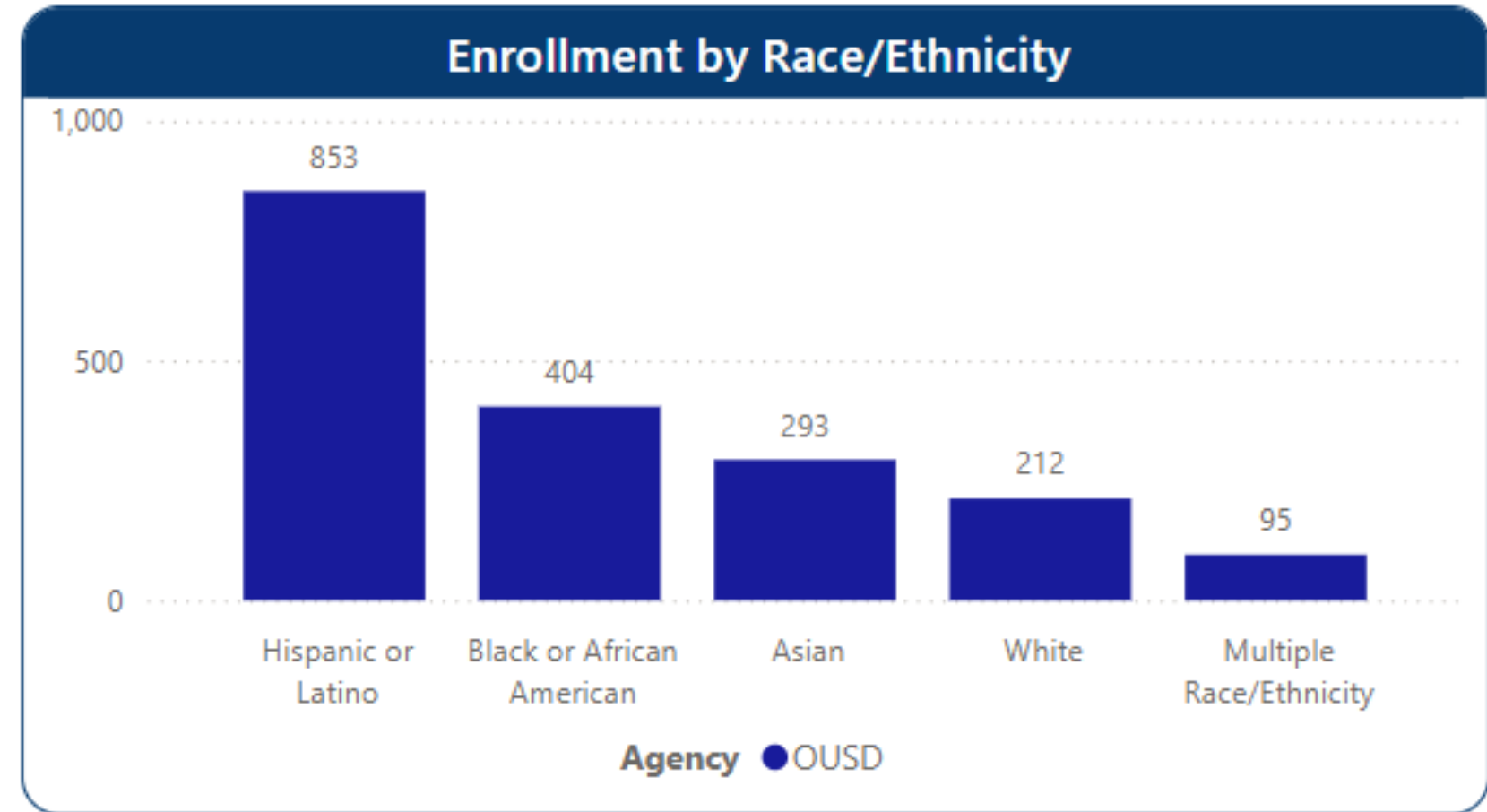
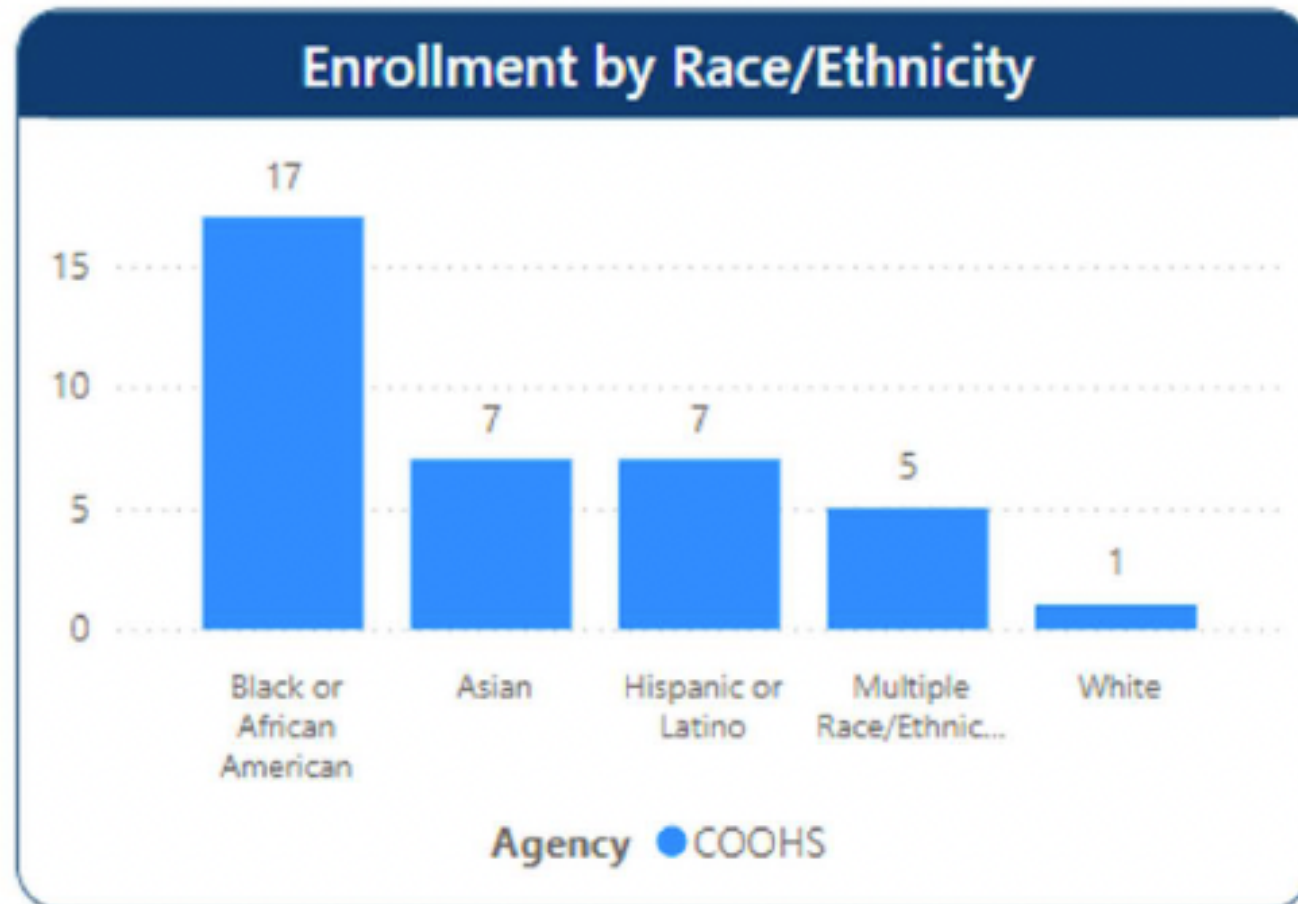
| Percent of Free and Subsidized Slots Enrolled | | | |
|---|--------------|---------------------------|------------------|
| Program | Enrollment | Free and Subsidized Slots | Percent Enrolled |
| CSPP Full Day | 629 | 812 | 77% |
| CSPP Part Day | 304 | 382 | 80% |
| Early Head Start | 9 | 12 | 75% |
| Head Start | 28 | 40 | 70% |
| Special Education | 200 | 286 | 70% |
| TK | 773 | 1,128 | 69% |
| Total | 1,943 | 2,660 | 73% |

An important measure is the percentage of free and subsidized slots enrolled, also referred to as uptake.

Monitoring uptake helps us understand how we might expand access to early care and education for Oakland's 4- and 3-year-olds.



Finding 5: Important differences can be seen when we compare results from the two public system partners.



*In accordance with OUSD policies, when there is a total of 10 or fewer students in a particular student group, no OUSD summary data is provided.

Finding 5: Important differences can be seen when we compare results from the two public system partners.

| Enrollment by Priority Population | | | | | | |
|-----------------------------------|-------------------|-----------------------|-------------------|-----------------------|-------------------|-----------------------|
| Agency | COOHS | | OUSD | | Total | |
| Priority Characteristic | Children Enrolled | % of Total Enrollment | Children Enrolled | % of Total Enrollment | Children Enrolled | % of Total Enrollment |
| SMI<85 | 33 | 89% | 1402 | 74% | 1435 | 74% |
| DLL | 9 | 24% | 1009 | 53% | 1018 | 52% |
| Single_Parent_Household | 18 | 49% | 417 | 22% | 435 | 22% |
| IEP_IFSP | | | 399 | 21% | 399 | 21% |
| Newcomer_Status | | | 61 | 3% | 61 | 3% |
| Unhoused | 2 | 5% | 17 | 1% | 19 | 1% |
| Foster_Care | 1 | 3% | * | * | * | 0% |

Across both priority partners, most children enrolled are considered high need as defined in the OCI ordinance with some variation between the partners in the populations served.

*DLL - Dual Language Learners
IEP - Individualized Education Program
IFSP - Individualized Family Service Plan*

**In accordance with OUSD policies, when there is a total of 10 or fewer students in a particular student group, no OUSD summary data is provided.*



Finding 6: An important area of OCI investment has been in improving facilities so they are safe and appropriate for young children. A significant investment in the first six months was in the OUSD Kaiser Early Childhood Center, with 81 children benefiting from the Kaiser facility enhancements.



Oakland Children’s Initiative Early Education Fund: RBA Metrics

| RBA Question | Category | RBA Measure |
|-----------------------|--------------------------|--|
| How Much? | Access/ Affordability | Number of free and subsidized slots by program type |
| | Access | Number of children enrolled in priority partner sites (OUSD & OHS) |
| | Quality | Number of ECE educators and staff |
| | Quality | Additional capacity from OCI funded capital infrastructure improvements |
| | Quality | Number and percentage of sites receiving OCI funded capital infrastructure improvements |
| | Access | Average number of hours ECE educators and staff participated in training/coaching/ and Professional Learning Communities (PLC) |
| How Well? | Access | Percentage of free and subsidized slots enrolled (uptake) |
| | Quality | Retention rate for ECE educators and staff |
| | Quality | Number and Percentage of ECE educators & staff who report the quality of trainings are good or very good |
| Is Anyone Better Off? | Quality | Number and percentage of children enrolled in an improved ECE facility due to OCI funded capital infrastructure improvements |
| | Access/Quality | Percentage of OCI sites with a quality rating above standard |

Where possible, measures will be disaggregated by demographic characteristics and zip code in service to exposing and addressing equity gaps and help inform our programs and investments.





QUESTIONS?



OAKLAND UNIFIED
SCHOOL DISTRICT
Community Schools, Thriving Students



CITY OF
OAKLAND
HEAD START



**CITY OF OAKLAND
CHILDREN'S INITIATIVE OVERSIGHT COMMISSION
RETREAT MEETING AGENDA
Saturday, July 27, 2024
9:00 AM
Joaquin Miller Community Center
3594 Sanborn Drive, Oakland, CA 94602**

Persons addressing the Children's Initiative Commission shall state their names and the organization they are representing, if any.

| | AGENDA ITEM | SCHEDULE | ACTION | ATTACHMENTS |
|----------|--|-----------------|---------------|--------------------|
| 1 | Breakfast & Welcome | 09:00 AM | AD | |
| 2 | Roll Call | 5 Minutes | AD | |
| 3 | Review of Agenda / Agreements / Icebreaker | 25 Minutes | AD | |
| 4 | RBA Implementation Partner Presentation | 60 Minutes | I | Attachment 1 |
| 5 | Evaluation Partner – American Institutes for Research | 60 Minutes | I | |
| 6 | LUNCH | 30 Minutes | | |
| 7 | Building Values Activity | 120 Minutes | AD | |
| 8 | Commission Business | 30 Minutes | AD | |
| 9 | Wrap-Up & Next Steps Call for agenda topics for next meeting | 10 Minutes | AD | |

**A = Action Item I = Informational Item AD = Administrative Item
A* = Action, if Needed**

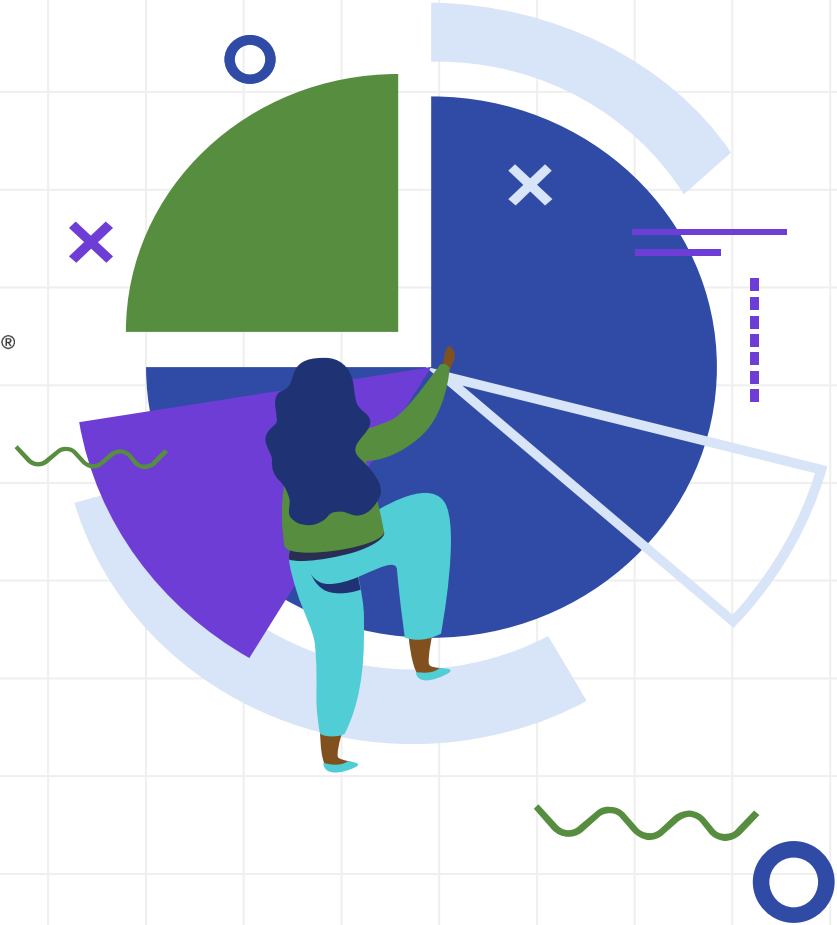
Do you need an ASL, Cantonese, Mandarin or Spanish interpreter or other assistance to participate? Please email JCaban@oaklandca.gov or call (510) 238-6840 or (510) 238-2007 for TDD/TTY five days in advance.

¿Necesita un intérprete en español, cantonés o mandarín, o otra ayuda para participar? Por favor envíe un correo electrónico a JCaban@oaklandca.gov o llame al (510) 238-6840 o al (510) 238-2007 para TDD/TTY por lo menos cinco días antes de la reunión. Gracias.

你需要手語, 西班牙語, 粵語或國語翻譯服務嗎? 請在會議前五個工作天電郵 JCaban@oaklandca.gov 或 致電 (510) 238-6840 或 (510) 238-2007 TDD/TTY.



*RBA baseline data &
preliminary FY24 results*





FY24 RBA metrics: A year of more & better with OCI Support

1

More Oakland children, students, and families *served* than ever before

2

Our children, students, and families are *positively impacted* by our services

3

We are serving *those who are most impacted* by structural barriers to education



RBA Framework Reminder

How Much?

How Well?

Who is Better Off?



City of Oakland - College Access Supports Implementation Partner RBA Performance Measures

| | Performance Measure | Frequency |
|---|--|------------------|
| <p>How much? How much enrollment and participation do we and our partners have in our programs?</p> | # of Medi-Cal eligible children age 0-23 months signed up for \$500 college savings account scholarships, and % of children enrolled compared to annual eligible population | Annually |
| | # of children enrolled for up to \$500 in early college scholarships by the end of 9th grade annually, and % annual change in number of children enrolled | Annually |
| | # of Oakland 12th graders who were awarded scholarships for postsecondary education; and total amount of scholarship funds awarded annually to OP scholars for their postsecondary education | Annually |
| | # of Medi-Cal eligible caregivers of 0-23 month olds receiving financial coaching, and % of eligible families who received financial coaching | Annually |
| | # of Oakland caregivers and public school students participating in college- and career- identity building programming | Annually |
| | # of Oakland Promise scholars receiving postsecondary education persistence support | Annually |
| <p>How well? Impact of our programming on three main outcomes: college-bound identity, postsecondary affordability, and postsecondary education enrollment and persistence</p> | <p>College-bound identity</p> % of enrolled Medi-Cal eligible caregivers of 0-23 month olds who report having a college-bound identity for their children | Annually |
| | % of Oakland public school students participating in OP programming who demonstrate a college-bound identity | Annually |
| | <p>Postsecondary affordability</p> Total amount of scholarship funds distributed annually to Oakland Promise scholars for their postsecondary education | Annually |
| | The impact of Oakland Promise funds on the postsecondary education affordability for Oakland Promise scholars | Annually |
| | <p>Postsecondary enrollment and persistence</p> Postsecondary education enrollment rate for Oakland Promise scholars; Oakland Promise scholars enrollment rate compared to Oakland Unified Public School graduates broadly and the national postsecondary enrollment rate | Annually |
| | Year 1 to Year 2 persistence rate for Oakland Promise scholars in postsecondary education | Annually |
| <p>Who is Better Off? Our goal is to increase postsecondary education completion, particularly for those students who have traditionally underrepresented</p> | Postsecondary education completion rate for Oakland Promise scholars; Oakland Promise scholars completion rate compared to Oakland Unified Public School graduates broadly and the national postsecondary completion rate for the same class | Annually |
| | Postsecondary education completion rate for all Oakland public school graduates | Every 2 years |

“How Much” RBAs At -a-Glance

| | <u>FY23 Baseline</u> | <u>FY24 New Data</u> |
|--|---------------------------------------|--|
| # of Medi-Cal eligible babies enrolled in \$500 College Savings Account | 445 children enrolled (27.8% pop) | 692 children enrolled (43.25% pop) |
| # of Medi-Cal eligible caregivers of babies receiving financial coaching | 387 caregivers (86.9% of eligible) | 387 caregivers (67.3% of eligible) |

Our Brilliant Baby program enrolled **247 MORE** babies this year than our baseline year- a **56% increase!**

Upcoming RBA report disaggregations will include race/ethnicity, zip code, and enrollments by partner organization.





Figure 3: Brilliant Baby Enrollments by Zip Code

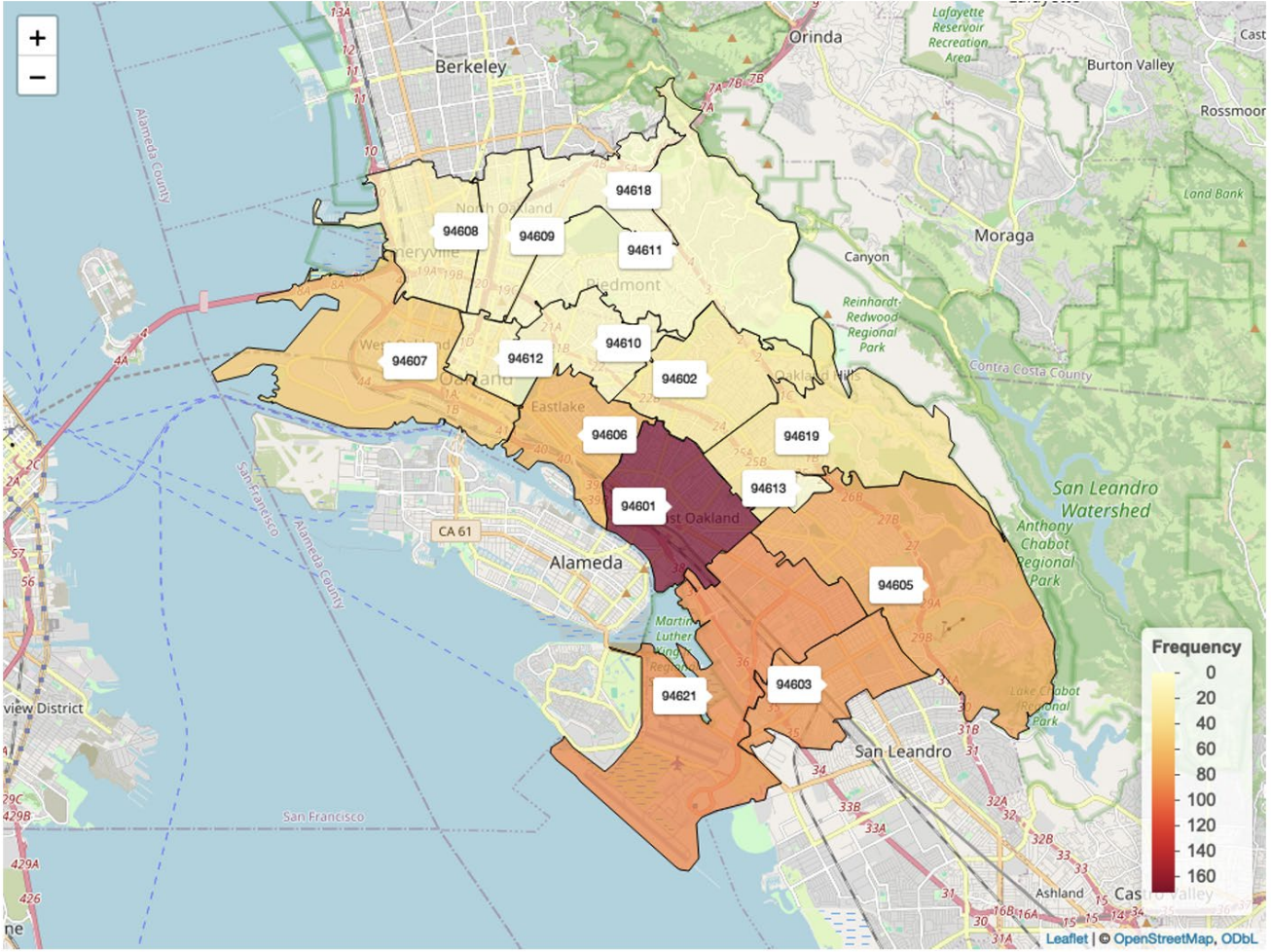
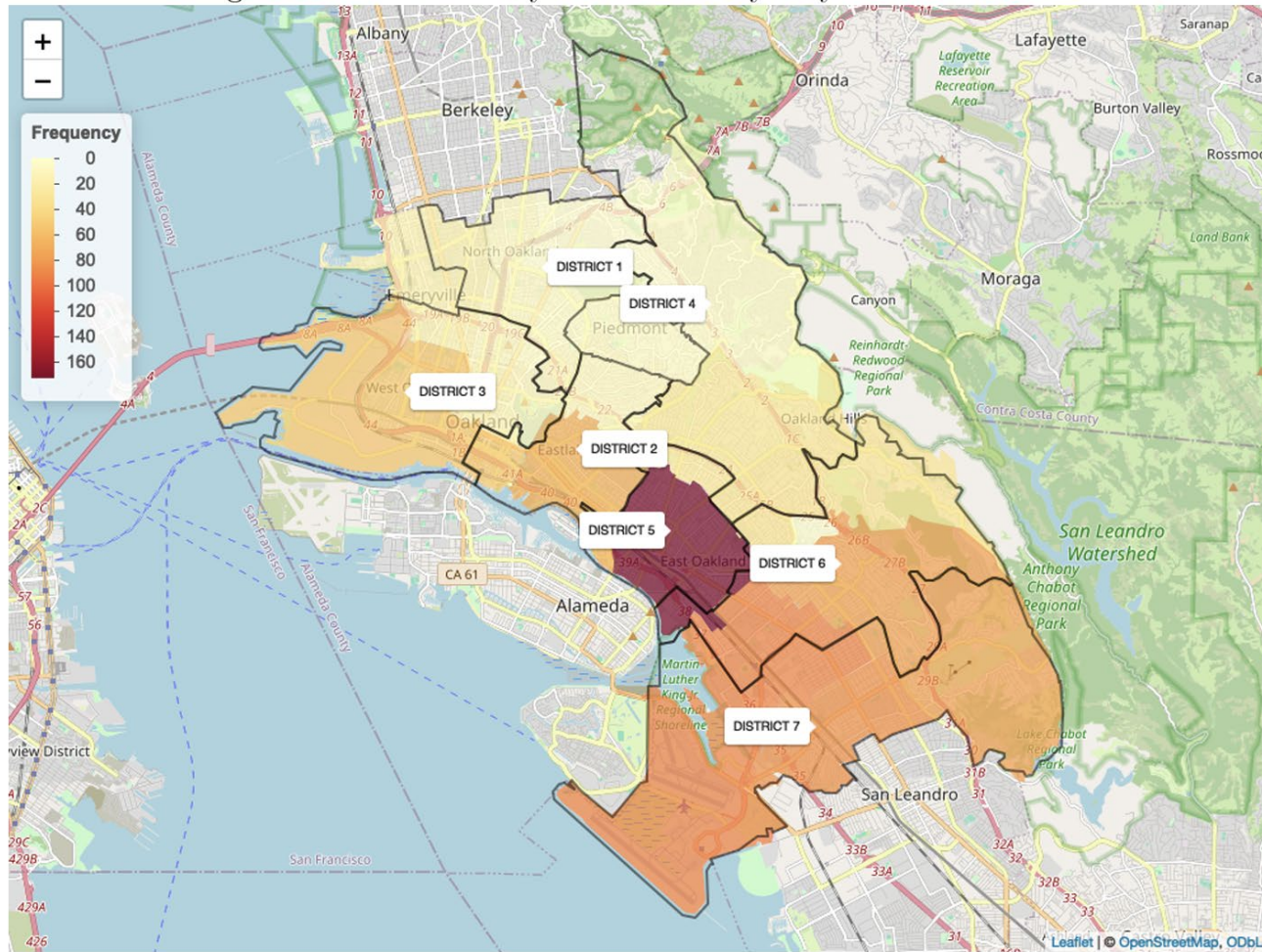


Figure 4: Brilliant Baby Enrollments by City Council Districts



“How Much” RBAs At -a-Glance

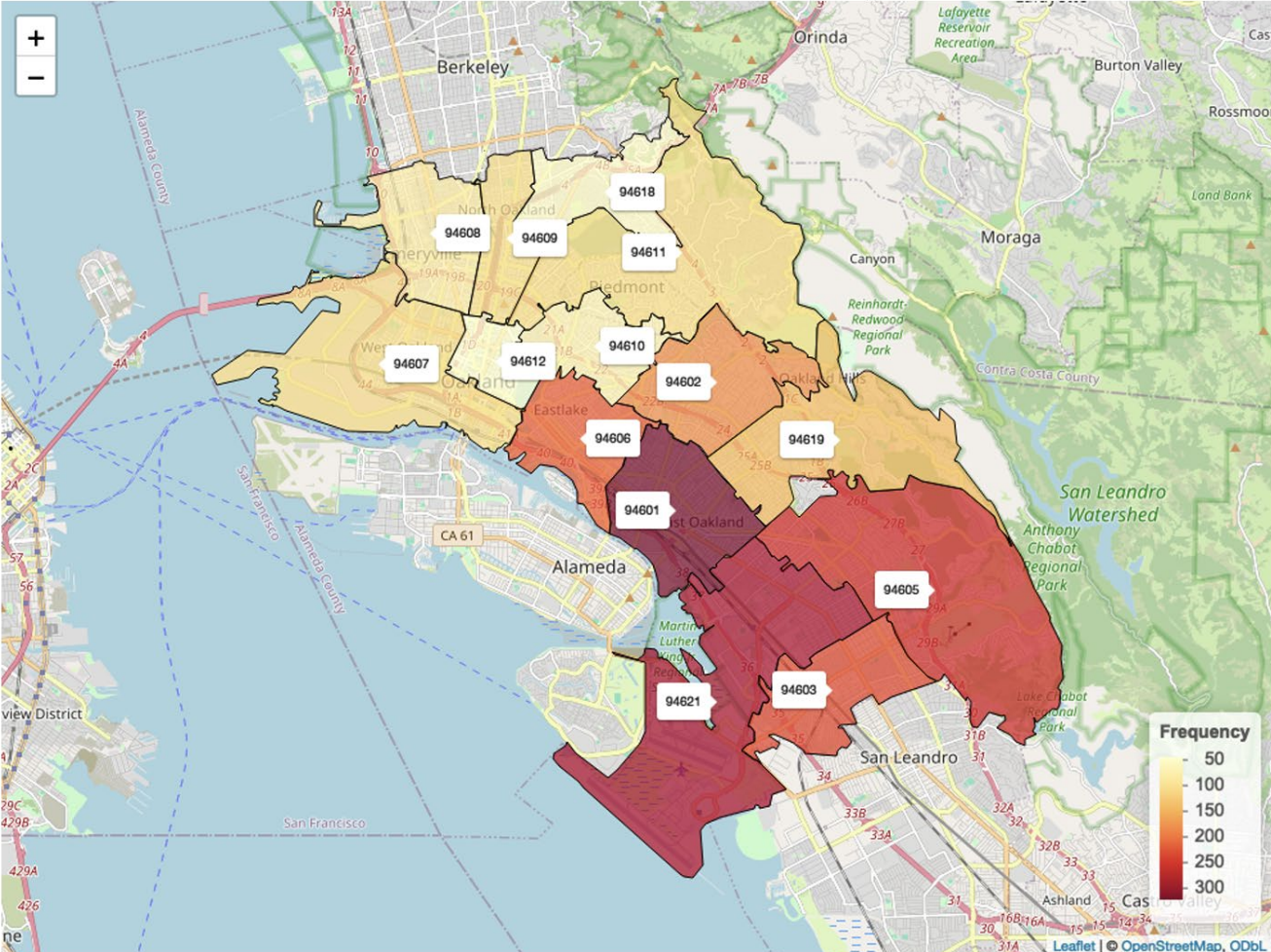
| | <u>FY23 Baseline</u> | <u>FY24 New Data</u> |
|---|-------------------------------|--------------------------------|
| # of Medi-Cal eligible babies enrolled in \$500 College Savings Account | 445 children enrolled (27.8%) | 692 children enrolled (43.25%) |
| # of Medi-Cal eligible caregivers of babies receiving financial coaching | 387 caregivers (86.9%) | 387 caregivers (67.3%) |
| # of children enrolled for up to additional \$500 Early College Scholarships by 9th grade | 638 children enrolled | 2298 children enrolled |

K2C enrollments **increased by 260%** this year-
1660 more children enrolled than baseline!

Upcoming RBA report disaggregations will include race/ethnicity, school, and zip code.



Figure 5: Scholarship Activations by Zip Code



“How Much” RBAs At -a-Glance

| | <u>FY23 Baseline</u> | <u>FY24 New Data</u> |
|---|---|--|
| # of Medi-Cal eligible babies enrolled in \$500 College Savings Account | 445 children enrolled (27.8%) | 692 children enrolled (43.25%) |
| # of Medi-Cal eligible caregivers of babies receiving financial coaching | 387 caregivers (86.9%) | 387 caregivers (67.3%) |
| # of children enrolled for up to additional \$500 Early College Scholarships by 9th grade | 638 children enrolled | 2298 children enrolled 260% increase |
| # of Oakland 12th graders awarded postsecondary scholarships | 909 scholarships \$3,648,300 awarded | 1171 scholarships \$4,602,000 |

Upcoming RBA report will include scholarship amount, race/ethnicity, gender, first gen status, SES, and college program type.



“How Much” RBAs At -a-Glance

FY23 Baseline

FY24 New Data

of Medi-Cal eligible babies enrolled in \$500 College Savings Account

445 children enrolled
(27.8%)

692 children enrolled
(43.25%)

of Medi-Cal eligible caregivers of babies receiving financial coaching

387 caregivers
(86.9%)

387 caregivers
(67.3%)

of children enrolled for up to additional \$500 Early College Scholarships by 9th grade

638 children enrolled

2298 children enrolled
260% increase

of Oakland 12th graders awarded postsecondary scholarships

909 scholarships
\$3,648,300 awarded

1171 scholarships
\$4,602,000

of Oakland families and students participating in college - and career-bound programming

5505 caregivers & K-12 students
1458 postsecondary scholars

Caregivers & K-12 students:
6709 by PARTNERS; 7723 by OP
Scholars: 1980





“How Well” RBAs At -a-Glance



Reporting a college-bound identity after
OP programming

FY23
Baseline

N/A, metric not
measured
before FY24

FY24 New
Data

83.69% of
caregivers
69.55% of K-12
students



“How Well” RBAs At -a-Glance

| | FY23 Baseline | FY24 New Data |
|---|--|---|
| Reporting a college -bound identity after OP programming | N/A, metric not measured before FY24 | 83.69% of caregivers 69.55% of K-12 students |
| Postsecondary first -year enrollment rate | 86.6% | 83.3% |
| Postsecondary persistence rate (from Year 1 to Year 2) | 83.4% | 87.14% |



“Who is Better Off?”

RBA At-a-Glance

FY23

Six-Year Postsecondary Completion Rate:

54%

34% general OUSD rate; 29.2% national rate

Six-Year Postsecondary Completion Rate: 51.2%

28.45% general OUSD rate

FY24

Scholars supported by OP consistently have *higher completion rates* than OUSD students broadly and the national rates for student from low income high schools.

No data yet available for city-wide population metric on six-year postsecondary completion. Upcoming RBA report disaggregations include degree type.

In FY24...

OAKLAND  PROMISE[®]



3,000

New Oakland babies & children started saving for college early

Nearly \$5M

Awarded directly to low income Oakland 12th graders for postsecondary education

Over 80%

Of low income Oakland graduates supported by OP enrolled in and persisted in postsecondary education

