

SAN ANTONIO PARK MASTER PLAN

SAN ANTONIO 公園 總體計劃

Community Meeting #3
April 29, 2021

社區會議 #3
2021 年 4 月 29 日

REVITALIZING
SAN ANTONIO PARK

重新煥發活力
SAN ANTONIO 公園

AGENDA | 議程

- 01** Project Development + Status
項目發展+現狀
- 02** CEM #2 Survey Results
第 2 次社區參與會議問卷調查結果
- 03** Master Plan
總體規劃
- 04** Discussion + FAQs
討論+常見問題

San Antonio Park Master Plan (SAPMP) Process

San Antonio 公園總體計劃 (SAPMP) 流程



*PRAC = Parks Recreation Advisory Committee



*PRAC = 公園娛樂諮詢委員會

Fire Station #4 Relocation Process | 4 號消防站遷移流程



Fire Station #4 Real Estate Summary | 4號消防站不動產總結

Process

- ❖ Spring 2019 two real estate agents assigned.
- ❖ They search and monitor the market throughout 2019, 2020 and 2021 using proprietary databases, field surveys and word of mouth. Potentially suitable sites shared with OFD as they are discovered.
- ❖ Search is limited to properties with willing sellers.
- ❖ Search is limited to FS4 service area with priority for sites that are large, vacant, centrally-located and along major thoroughfares.
- ❖ Due to limited inventory, the Real Estate Division expands search to include partially-vacant industrial sites where some demolition and remediation would be required.

流程

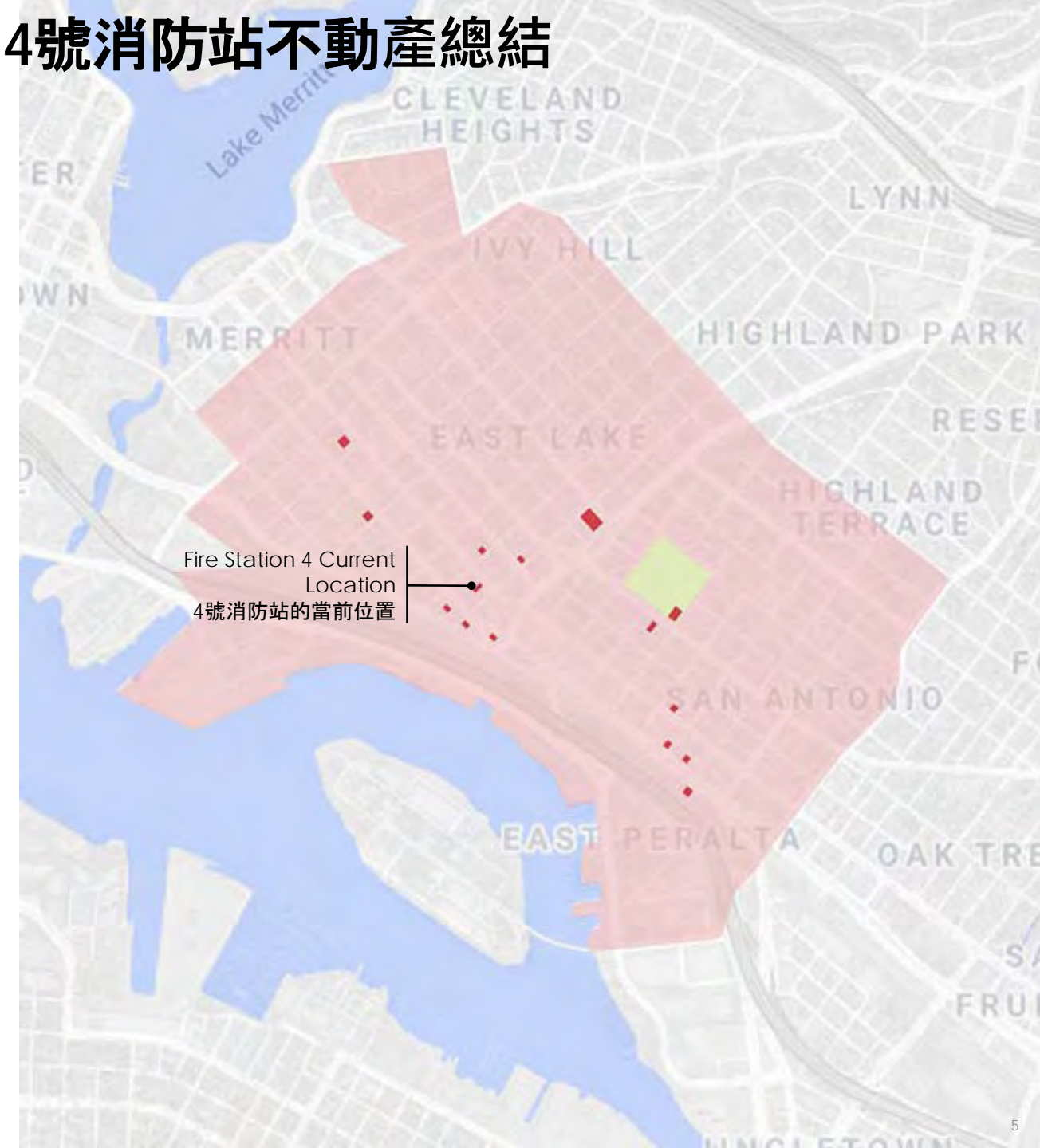
- ❖ 2019年春季委託了兩個地產經紀人。
- ❖ 他們使用地產數據庫，透過實地考察和調查口碑，搜索和監控了2019年，2020年和2021年的市場狀況。尋找發現他們認為適合與屋崙消防部門共享的潛在場所。
- ❖ 搜索僅限於自願賣家的房產。
- ❖ 搜索僅限於適合4號消防站服務區域的地產，優先考慮足夠空間，足夠空曠，位於中心位置並且沿著主要幹道這些因素。
- ❖ 由於地產庫存有限，地產經紀人擴大了搜尋範圍，將部分空置的工業用地包括在內，這些工業用地需要進行一些拆除和整治工作。

Conclusions

- ❖ Due to site requirements and commitment to working only with willing sellers, only a few potentially suitable sites are identified.
- ❖ Some parcel assemblage, demolition and remediation will be required under any scenario.

結論

- ❖ 因場地需求和承諾只能與有銷售意願的賣方合作，所以只找到幾個潛在的合格地產。
- ❖ 而且這些地產都需要做一些地塊合併，拆除和修復的工作。



Fire Station 4 Current Location
4號消防站的當前位置

Fire Station #4 Site Criteria Analysis | 4 號消防站場地標準分析

Constraints

SITE REQUIREMENTS

- Minimum ~22,400 SF with 135' of frontage for back-in 3-bay station; ~33,600 SF with 140' of frontage for drive-through 3-bay station
- Central location w/in service area for equitable response time
- Non-divided **thoroughfare** (facilitate ingress/egress)

WILLING SELLERS ONLY

[eminent domain requires policy direction]

BUDGET/TIME

(acquisition, demolition, and/or remediation)

Replacement/ Relocation Scenarios

A: PURCHASE NEW SITE ALIGNED W/ SITE REQUIREMENTS

B: UTILIZE EX. CITY-OWNED PROPERTY ALIGNED W/ SITE REQUIREMENTS

- Candidate Location: San Antonio Park
- Candidate Location: None identified

C: REBUILD AT CURRENT FS4 LOCATION

(existing 6,900 SF site not large enough for 3-bay station)

Summary Considerations: Land Acquisition, Site Prep, Temp Housing

A: ADDS \$6-\$9M AND 2- 4 YEARS TO COMPLETION SCHEDULE

B: MINIMIZES COMPLETION SCHEDULE W/ NO ACQUISITION, MINIMAL DEMO, & ACHIEVABLE MITIGATION

C: ADDS \$3-\$4M; INHIBITS ABILITY TO MEET SERVICE DEMANDS
(renovation not feasible due to current condition and code requirements)

限制

場地要求

- 最少 ~22,400 平方呎 · 臨街 135 呎的倒車式 3 停車間消防站；~33,600 平方呎 · 臨街 140 呎的直通式 3 停車間消防站
- 服務區域的中央位置 · 到各地均有相等的反應時間
- 無分隔島的主幹道 (設施入/出口)

僅限有意願的賣家

[強制徵收需要政策命令]

預算/時間

(收購、拆除及/或矯正)

替代 遷移案例

A : 購置符合場地需求的新場地

B : 利用符合場地需求的市府持有物業

- 候選位置 : San Antonio 公園
- Candidate Location: 未尋獲

C : 在目前的 4 號消防站原址重建

(現有的 6,900 平方呎場地不足以建置 3 停車空間消防站)

摘要考量：土地取得、場地準備、臨時場地

A: 增加 600-900 萬美元和 2-4 年才能完成計畫表

B: 最小化計畫表 · 無收購 · 最少的反抗 · 以及可達成的緩解方式

C: 增加 300-400 萬美元；符合服務需求的約束能力
(目前的條件和規範要求無法進行裝修)

Fire Station #4 Background | 4 號消防站背景

History

- ❖ Current location: 1235 International Boulevard
- ❖ Houses a Fire Engine and Ladder Truck
- ❖ Operates 24 hours a day, 365 days a year
- ❖ In the top third of busiest fire stations
- ❖ Responds to nearly 4000 calls per year
- ❖ Designed in 1909, oldest fire station in Oakland
- ❖ One of the oldest public buildings in Oakland

Current Challenges

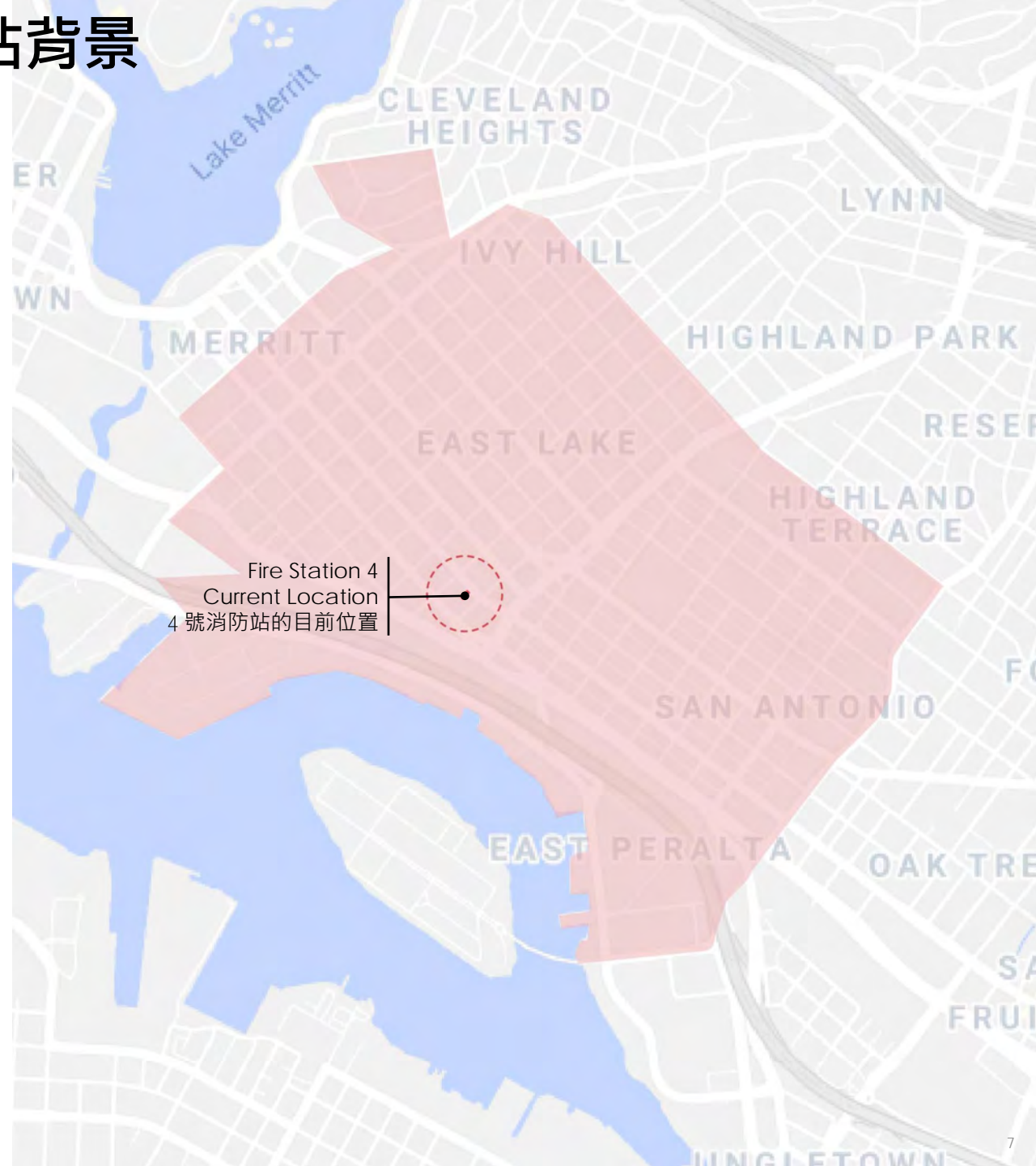
- ❖ Station does not meet modern fire service standards
- ❖ Structure lacks adequate facilities to accommodate a mixed gender workforce
- ❖ The narrow width of the building and the lack of distance between the street and the firehouse doors creates traffic safety and other related hazards
- ❖ Station 4 does not meet ADA, NFPA (National Fire Protection Association), or OSHA (Occupational Safety and Health Administration) standards
- ❖ The building is incapable of meeting the range of community response and resilience needs and is unable to serve as a hub for disaster recovery activities due to limited available training, storage, and meeting space

歷史

- ❖ 目前位置：1235 International Boulevard
- ❖ 配置一輛消防車和雲梯車
- ❖ 24 小時待命，全年無休
- ❖ 名列前三分之一最忙碌的消防站
- ❖ 每年接聽將近 4000 通電話
- ❖ 成立於 1909，它是屋崙市最老的消防站
- ❖ 屋崙市最古老的公共建築之一

目前的挑戰

- ❖ 消防站不符現代消防標準
- ❖ 結構缺乏提供性別混合職場的適當設施
- ❖ 建築物寬度不足，街道和消防站大門沒有足夠距離，導致交通安全和其他相關危害
- ❖ 4 號消防站不符合 ADA、NFPA (美國消防協會) 或 OSHA (美國職業安全衛生檢查署) 等標準
- ❖ 建築物無法達到社區反應和彈性需求的要求範圍，而且無法作為災害復原活動的場地，因為可用的訓練、儲存和會議空間都有所限制



Fire Station 4
Current Location
4 號消防站的目前位置

Fire Station #4 Service Area | 4 號消防站的服務區域

Opportunities

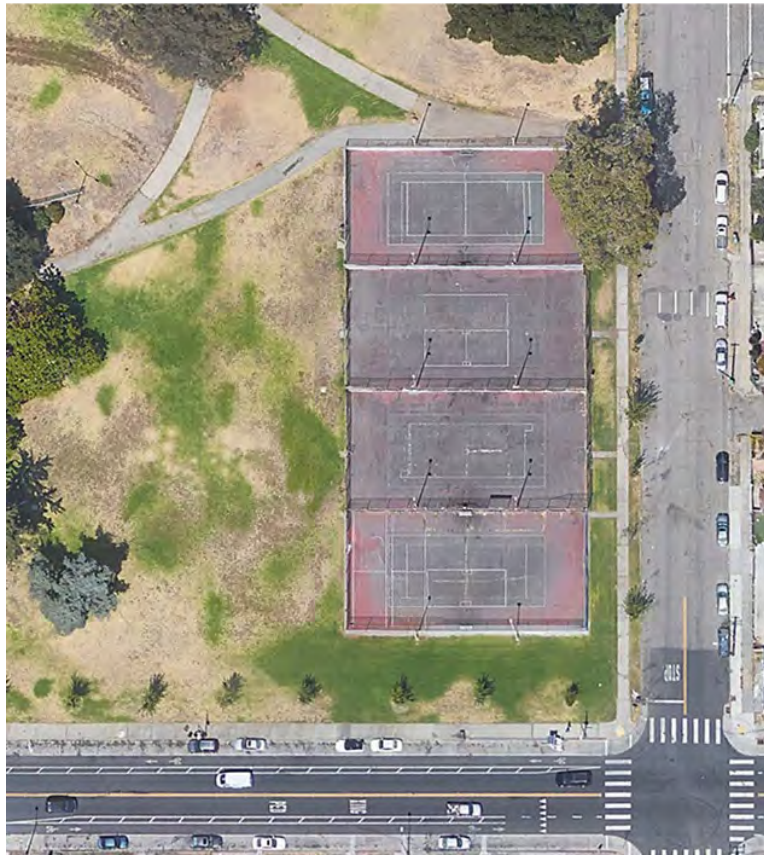
- ❖ A new station in the area should be built to stand in support of the neighborhood for a century, just as the existing Station 4 has.
- ❖ Newer stations provide a reduced carbon footprint, greater operating efficiency, and lower operating costs for the departments and city taxpayers/residents.
- ❖ Placing a station in a central location, along an arterial throughfare will improve the department's ability to plan and respond to all manner of incidents in the station's vicinity, ultimately improving public health and safety.
- ❖ OFD recognizes the opportunity to play a larger role in the community with the station serving as a usable public space to host a wide range of safety education, community engagement, recreational activities, and provide a pathway for mentorship and career development.
- ❖ Based on the 24-7-365 operating hours, the immediate area around a firehouse tends to have less crime, violence, and blight. Firefighters take pride in their stations, which serve as a second home to the crew living and working there. Thus, they treat nearby residents as neighbors; looking out for them and working in partnership to address shared community concerns.
- ❖ OFD wants to ensure that the exterior design of the station is aligned with the esthetic and artistic values of the neighborhood and would provide ample opportunities for residents to contribute to the look and feel of their new community asset through a public art installation on and around the new station.

機會

- ❖ 該區域應建造新的消防站以因應鄰近地區未來百年的支援需求，如同現有的 4 號消防站曾達成的目標。
- ❖ 新的消防站可降低碳足跡、達成更高的運作效率、產生更低的成本，方能符合各部門和城市納稅人/居民的期望。
- ❖ 將消防站建置在鄰近主幹道的中央位置，可改善該部門在該消防局轄區內對各類意外事件的規劃和應變能力，最終可改善公共健康和 safety。
- ❖ 屋崙消防局發現有機會可以在社區中更受重視，讓消防站成為實用的公共空間，可舉行各種安全教育、社區參與、娛樂活動，並提供指導和職涯發展的管道。
- ❖ 基於其 24 小時開放全年無休的特性，消防站周邊地區通常比較不會發生犯罪、暴力和破壞等事件。消防員以其消防局為傲，對於在這裡生活和工作的人而言，消防站就是他們第二個家。因此，他們看待鄰近居民就像鄰居一樣；時時照看他們，合作解決共同的社區問題。
- ❖ 屋崙消防局希望確保消防站的外部設計符合鄰近地區的美學和藝術價值，並且會透過新消防站和附近的公共藝術裝置，提供充足的機會讓居民對新的社區資產提供外觀和觀感方面的意見。



Fire Station Site Study | 消防站場所研究



Native plant garden and path with seating
本地植物園和附帶座位的道路

Public Use Multi-use Court over parking
公共多用途球場優先於停車場

Community Room
社區室

Accessible public parking
無障礙公共停車場

Pedestrian Entry with benches, flowering trees, and lighting
附長椅、花樹與照明的行人通道

Noise Reduction Strategies
降噪策略



Path 'knuckle' with seating and public art feature
道路「knuckle」包含座椅和公共藝術特色

Multi-use courts
多用途球場

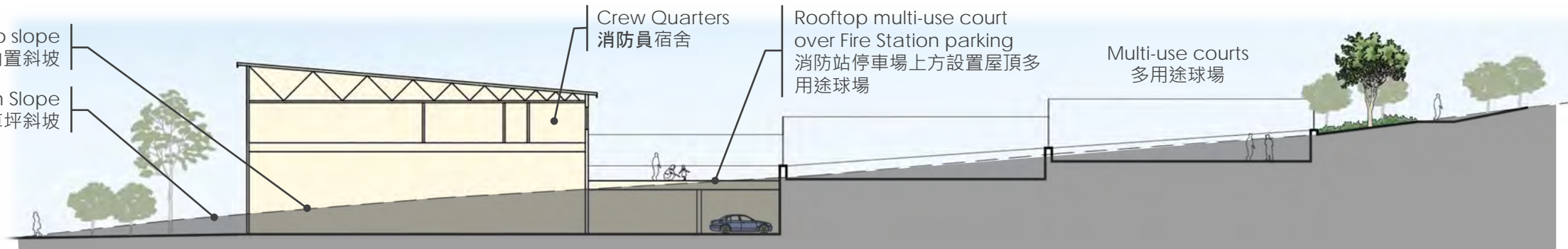
FS crew quarters face toward Park interior
消防員宿舍面向公園內部

Back-in station, reduced parking, minimized square footage
後勤站·減少的停車位·最小化的平方英尺

Footprint minimized with a rooftop multi-use court over parking, 3% of total park area
在停車場上使用屋頂多用途球場·將佔地面積降至最低·占公園總面積的3%

Fire Station built into slope
消防站內置斜坡

Existing Event Lawn Slope
現有活動草坪斜坡



Crew Quarters
消防員宿舍

Rooftop multi-use court over Fire Station parking
消防站停車場上方設置屋頂多用途球場

Multi-use courts
多用途球場

AGENDA | 議程

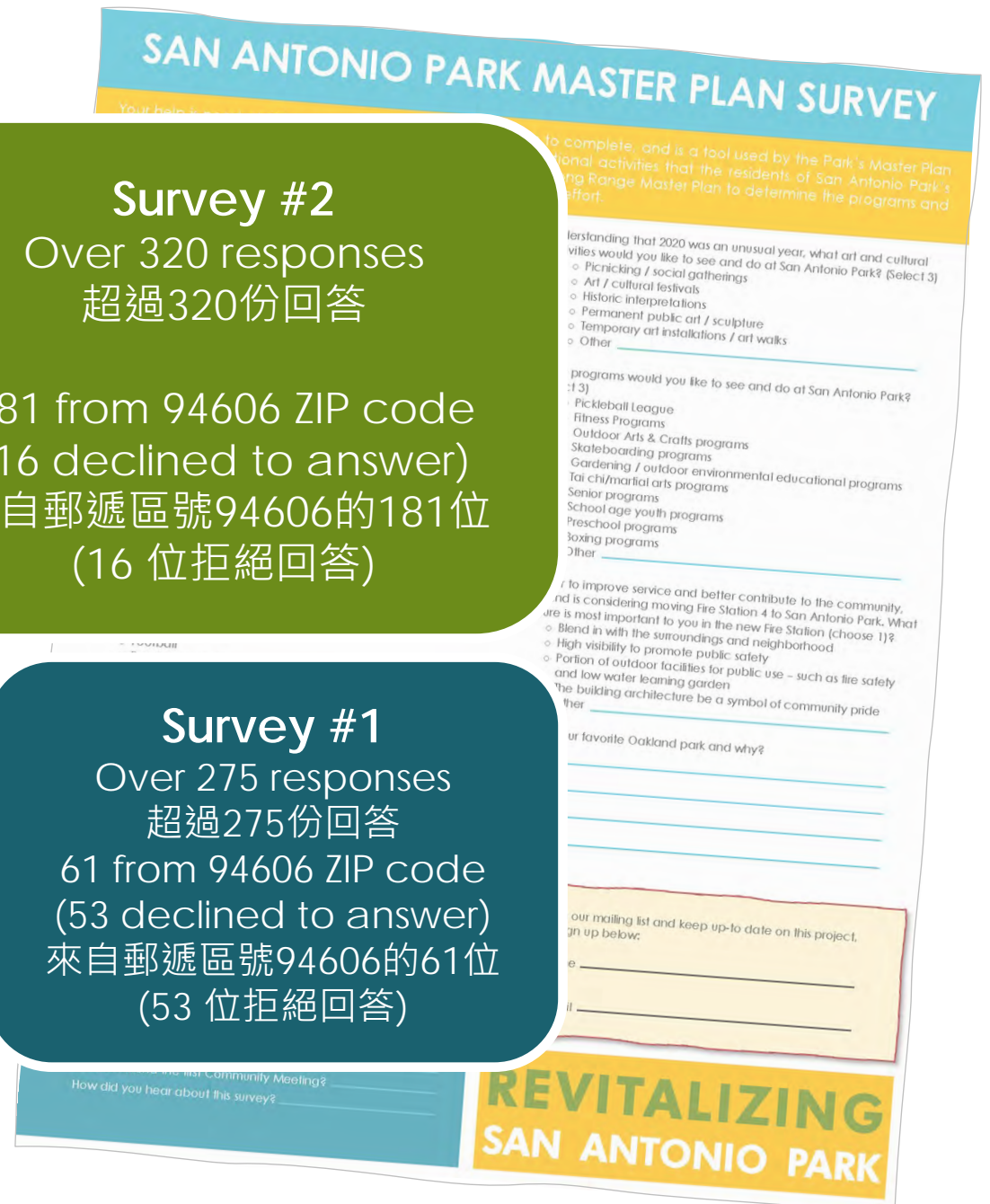
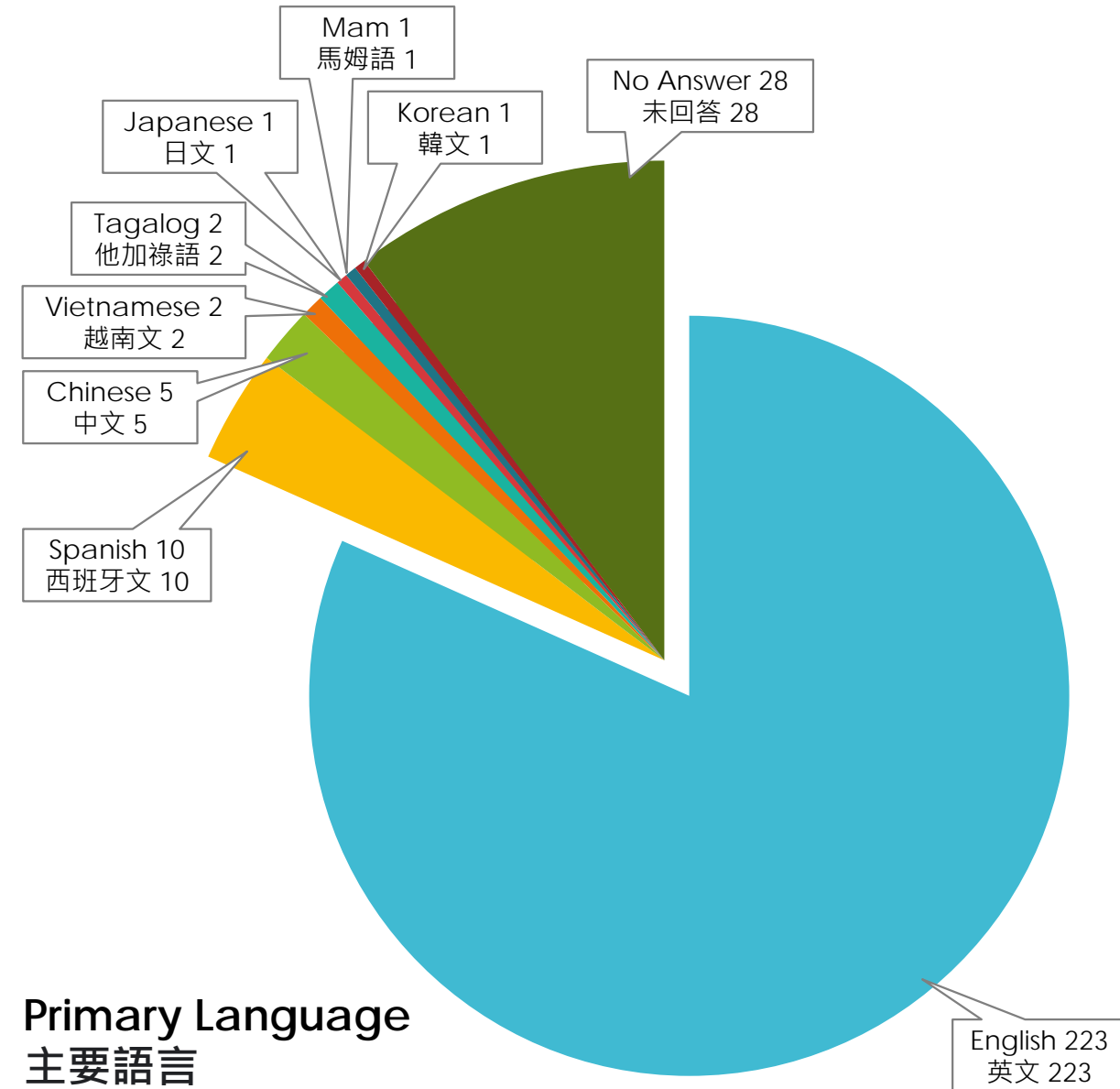
01 Project Development + Status
項目發展+現狀

02 CEM #2 Survey Results
第 2 次社區參與會議問卷調查結果

03 Master Plan
總體規劃

04 Discussion + FAQs
討論+常見問題

Survey Results | 問卷調查結果



Survey #2
 Over 320 responses
 超過320份回答

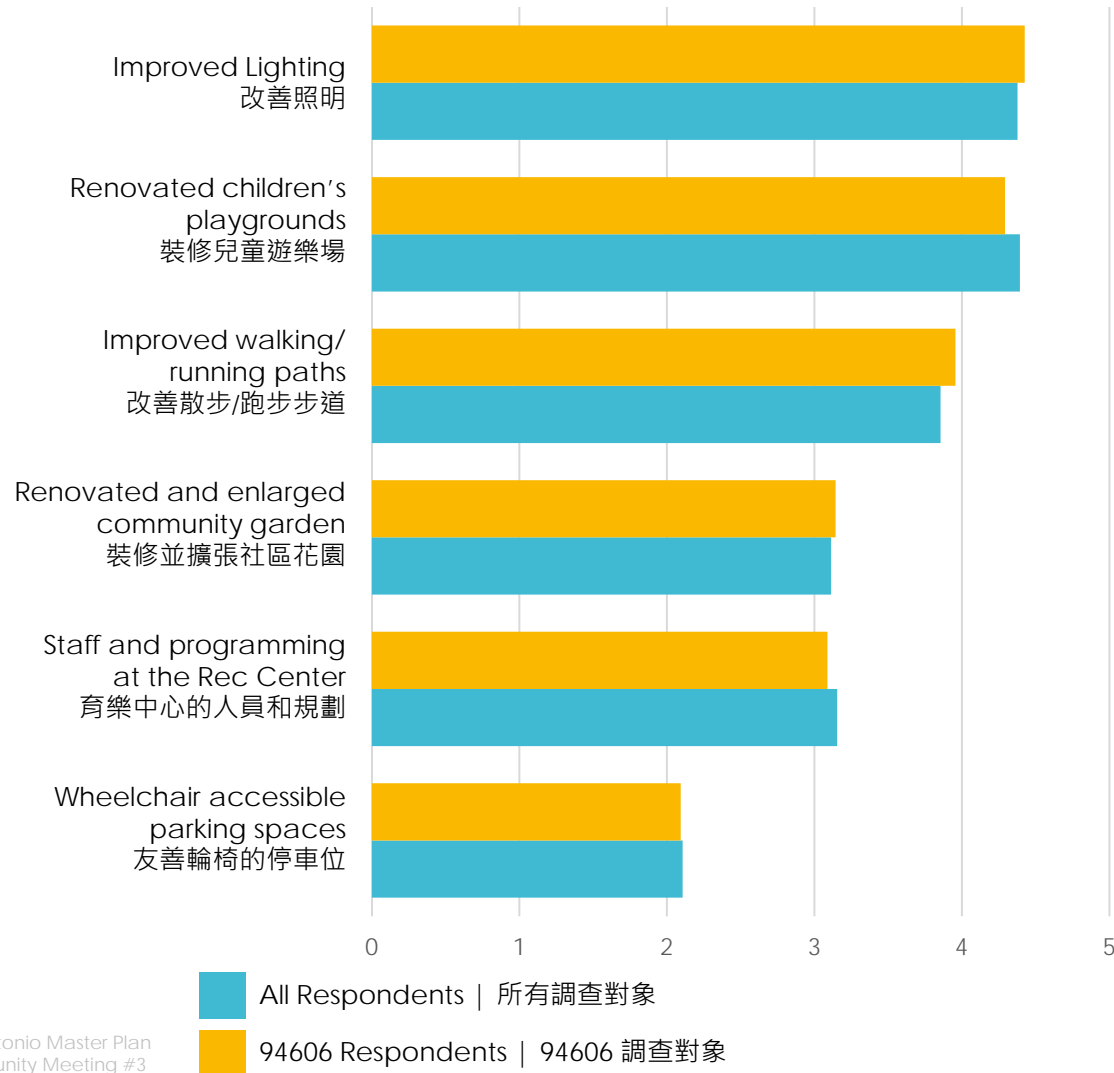
181 from 94606 ZIP code
 (16 declined to answer)
 來自郵遞區號94606的181位
 (16 位拒絕回答)

Survey #1
 Over 275 responses
 超過275份回答

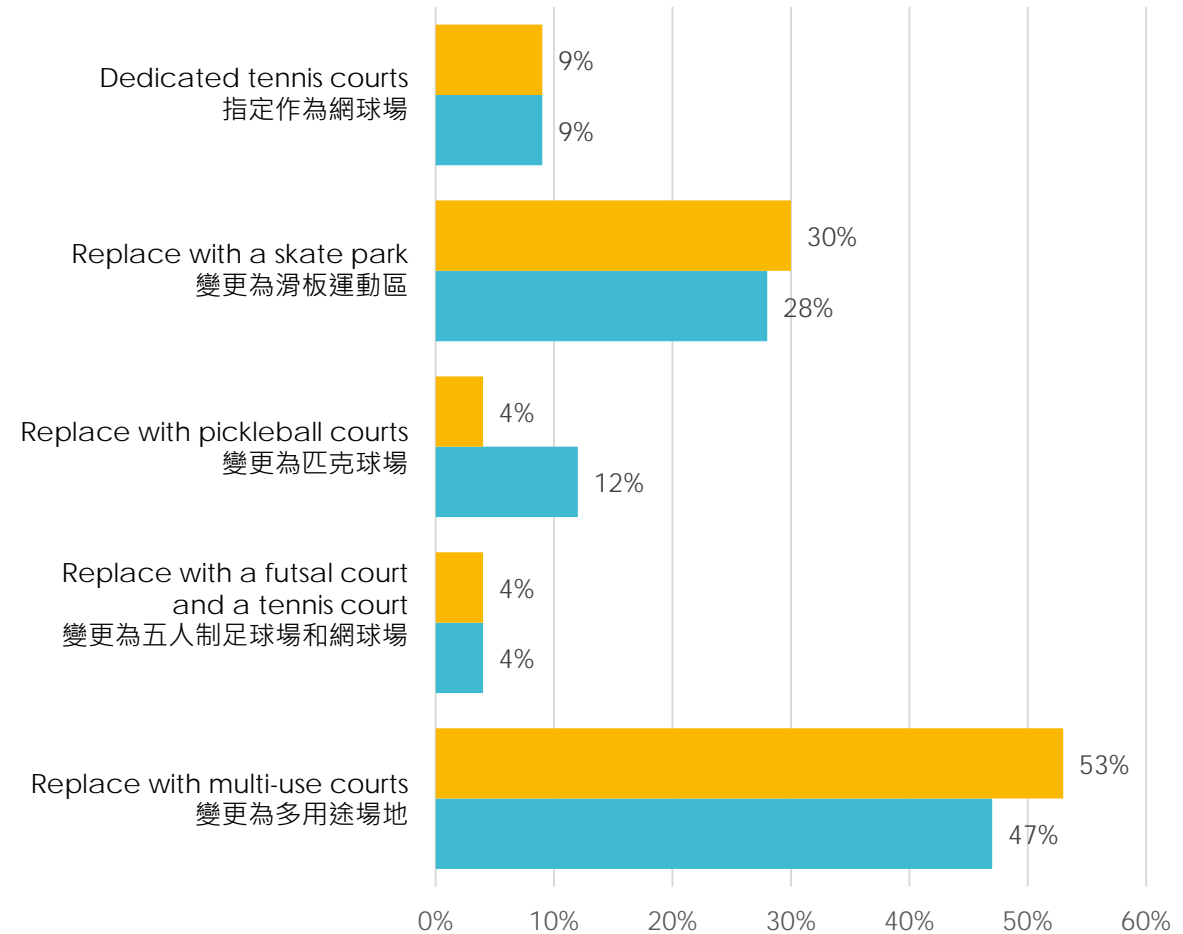
61 from 94606 ZIP code
 (53 declined to answer)
 來自郵遞區號94606的61位
 (53 位拒絕回答)

Survey Results | 問卷調查結果

Of the following Capital Improvement Projects, rank the following priorities in order of importance to you.
 在基礎設施改建計畫中，請依據對您的重要性排出下列項目的優先順序。

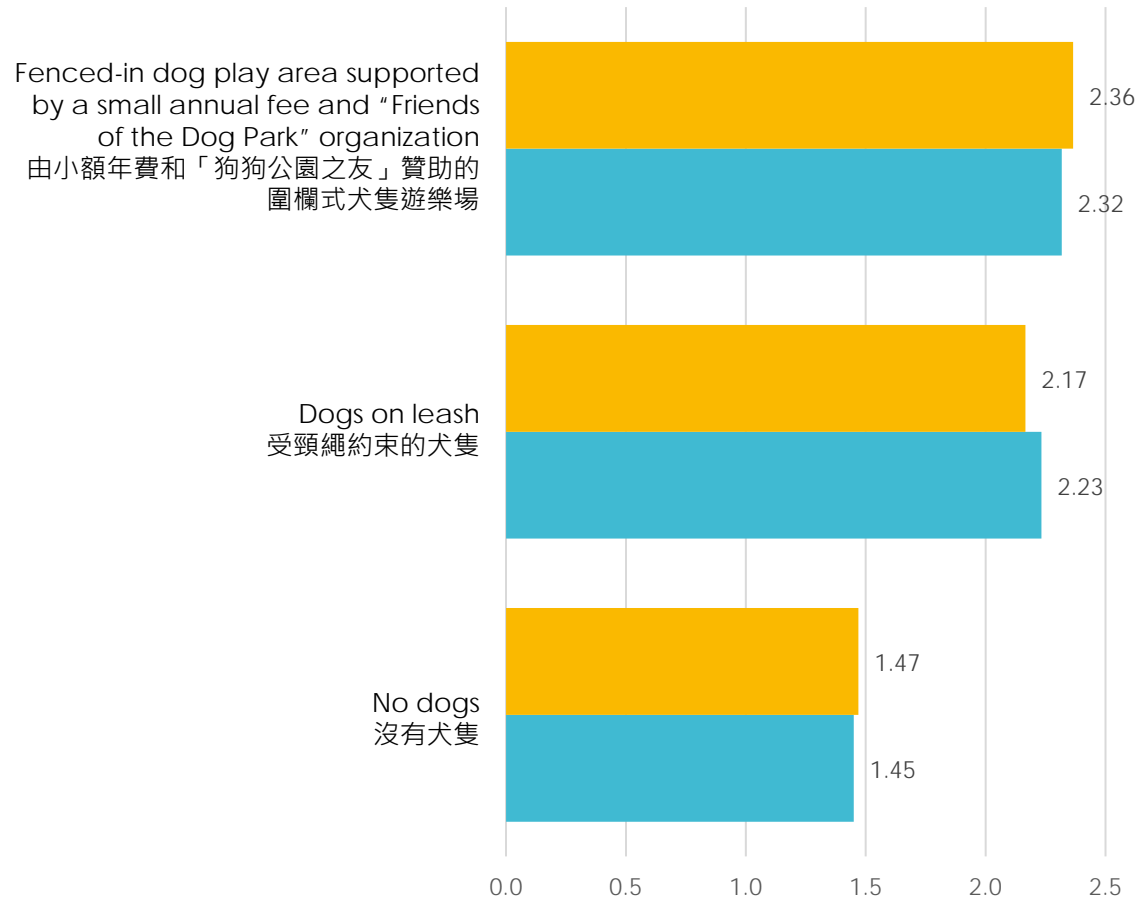


What uses would you like to see in the remaining two tennis courts if Fire Station 4 is relocated to the Park?
 如果4號消防站遷移到公園，您希望剩下兩座網球場作為什麼用途？



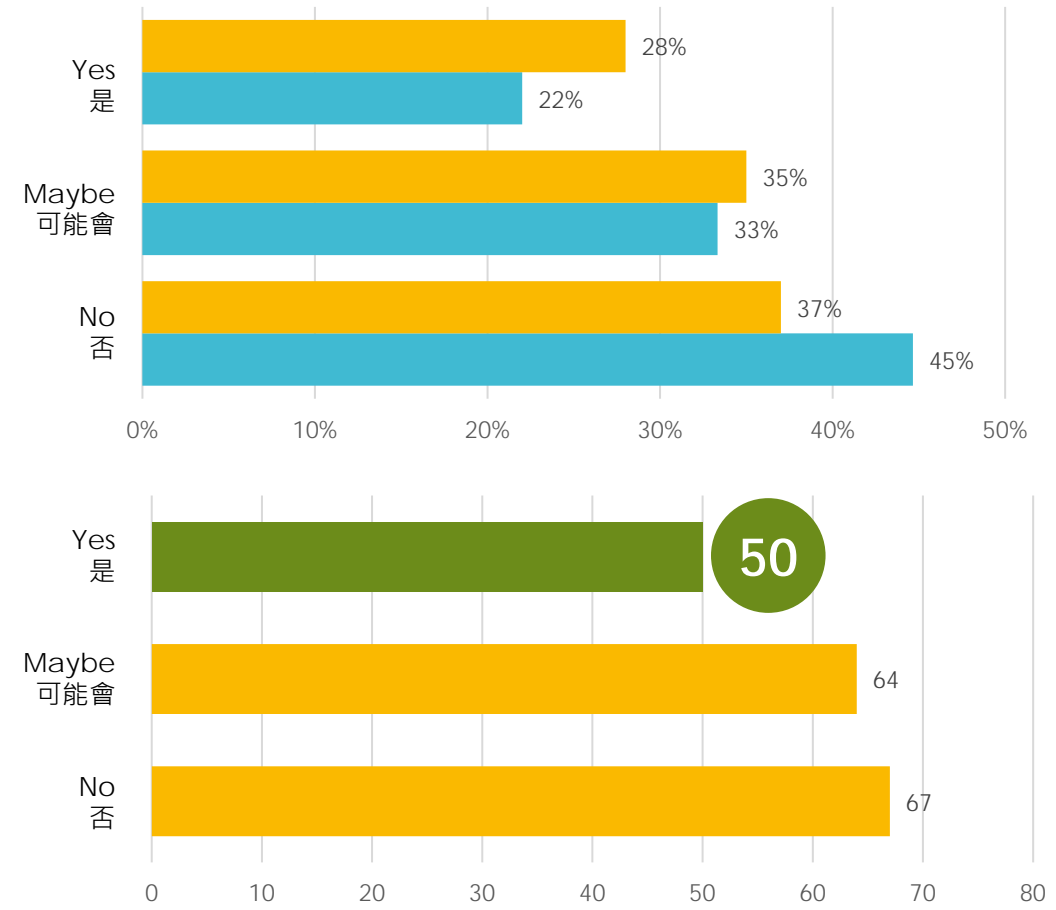
Survey Results | 問卷調查結果

There are no dog play areas within two-miles of the Park.
Please rank the options in order of importance to you.
公園周遭兩英里範圍內沒有遛狗區。請依據對您的重要性將這些選項進行排名。



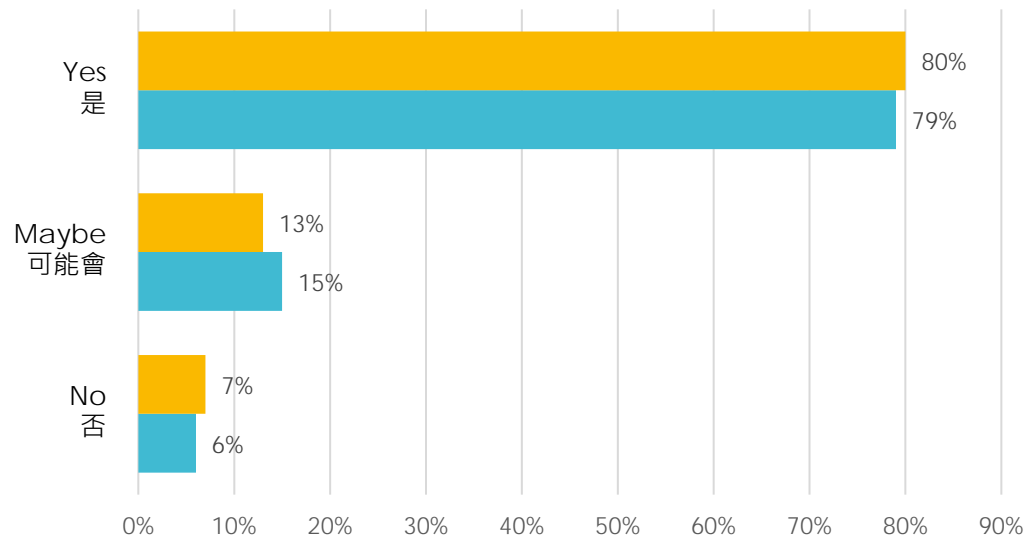
■ All Respondents | 所有調查對象
■ 94606 Respondents | 94606 調查對象

If there were a larger community garden at the Park, would you be interested in gardening/ tending to a plot?
如果公園內有更大的社區花園，您會有興趣從事園藝/照顧一小片土地嗎？



Survey Results | 問卷調查結果

Would you like to see historical markers/icons/references that document and celebrate the history of the San Antonio area and park?
您想要見到記錄和紀念 San Antonio 地區和公園的歷史標記/圖式/參考資料嗎？

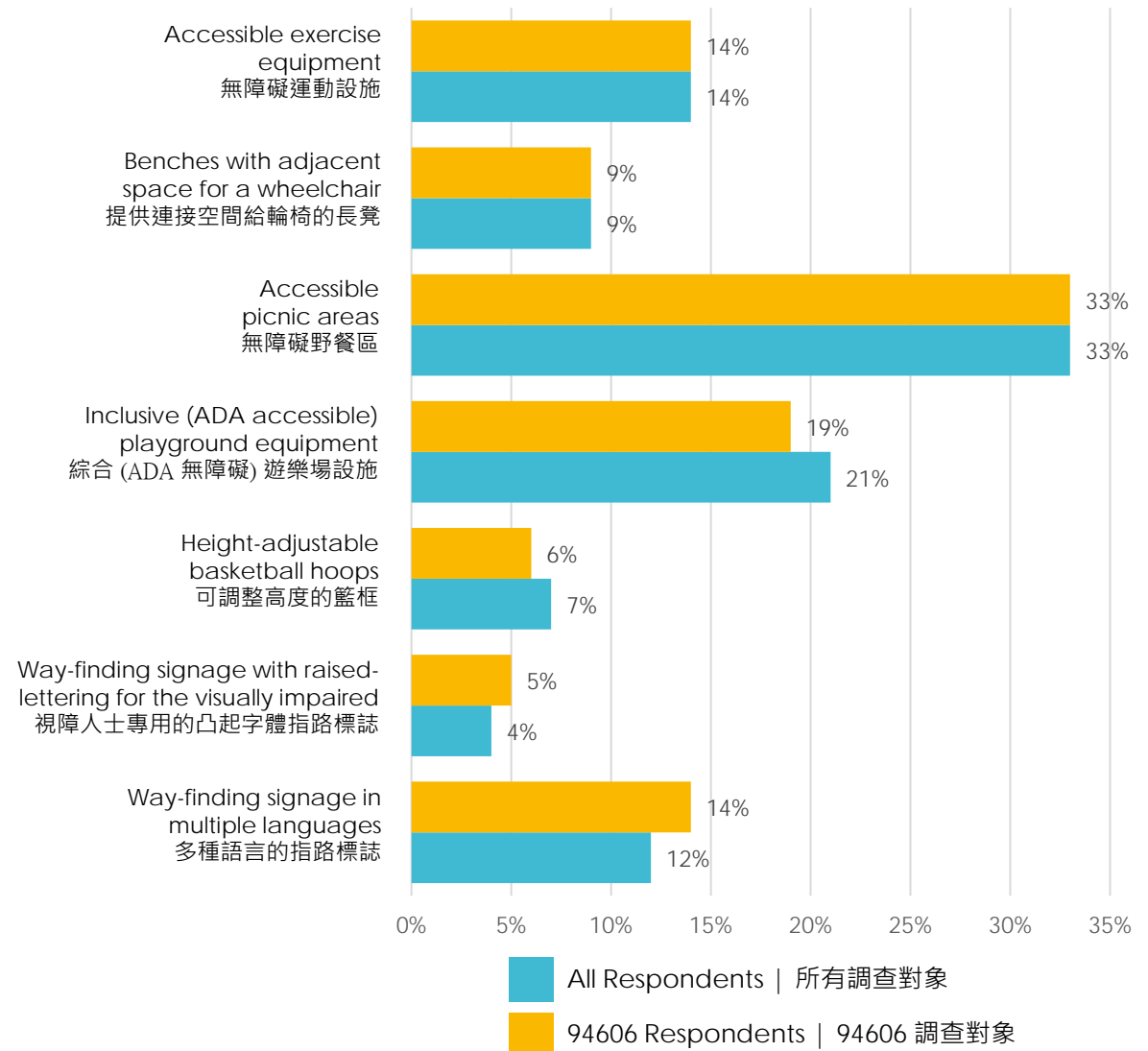


Chicana moratorium movement and the Malcolm X Jazz fest
墨西哥裔越南戰爭示威活動和 Malcolm X 爵士樂節

San Antonio's rich immigrant history
San Antonio 的豐富遷移史

Ohlone chachenyu history, natural landscape history
Ohlone chachenyu 歷史·自然景觀歷史

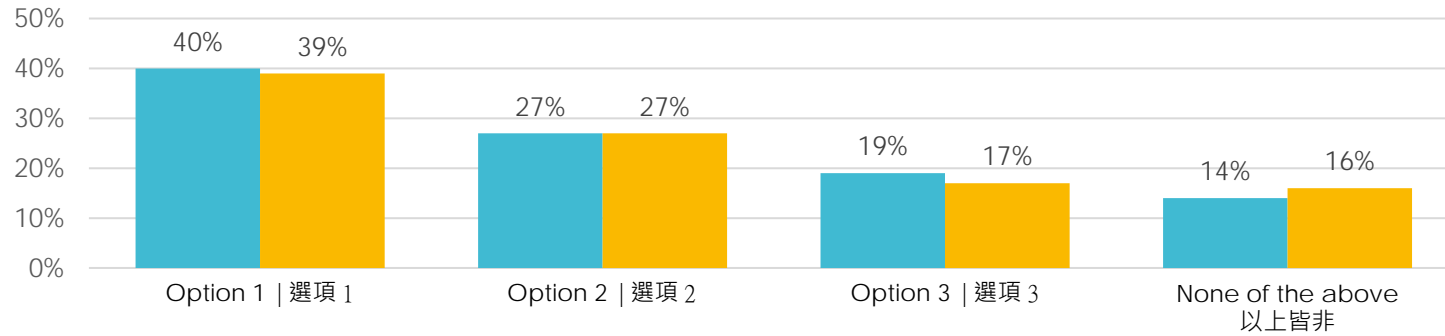
What accessibility improvements would you like to see at San Antonio Park?
您希望 San Antonio 公園有哪些無障礙改善？



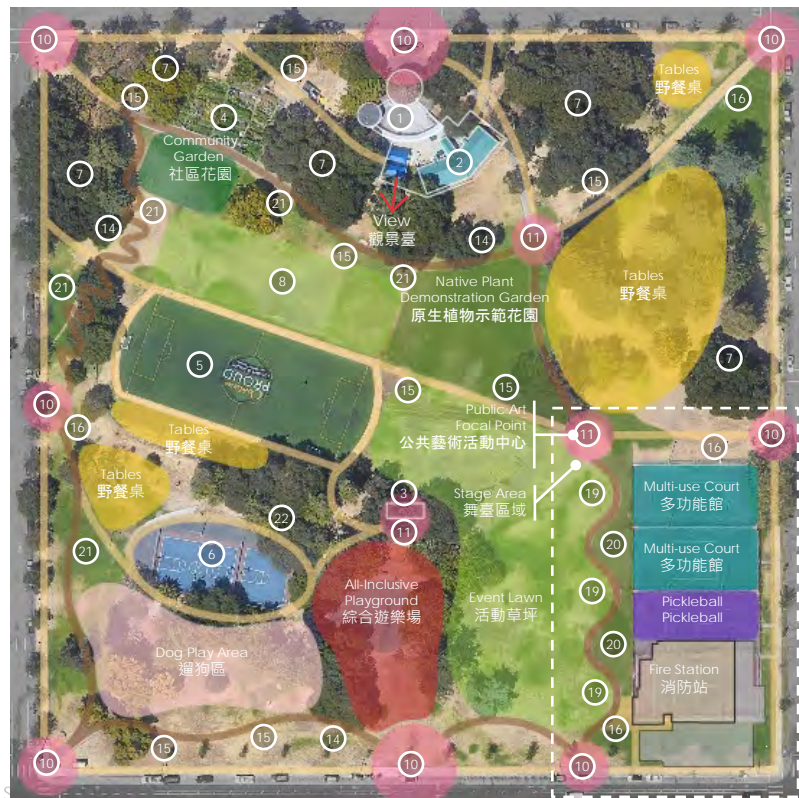
All Respondents | 所有調查對象
94606 Respondents | 94606 調查對象

Survey Results | 問卷調查結果

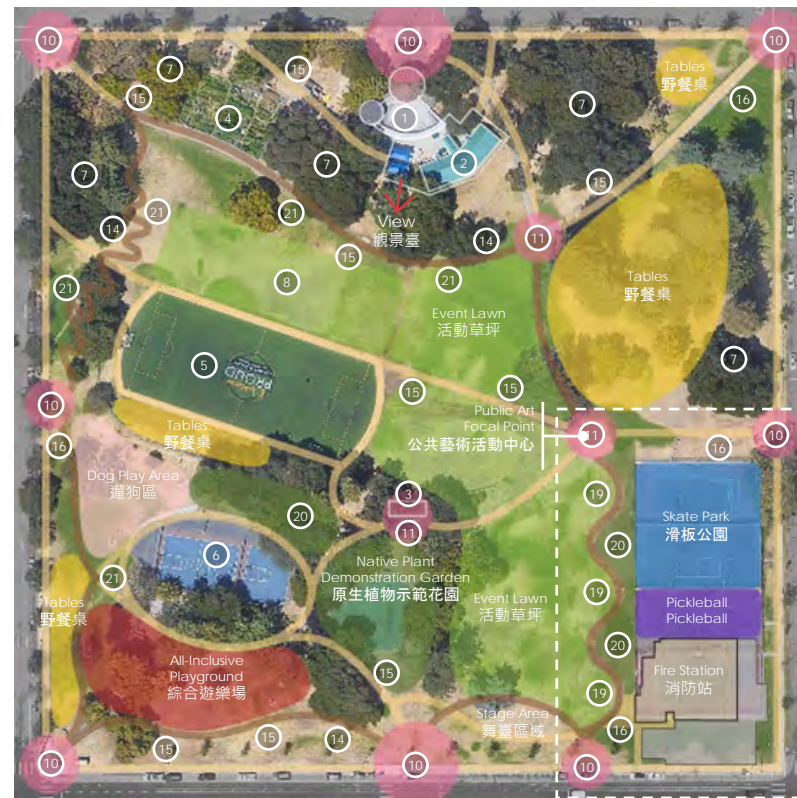
Of the following master plan options, which one is most desirable to you?
 在下列總體規劃選項中，您最想要哪一項？



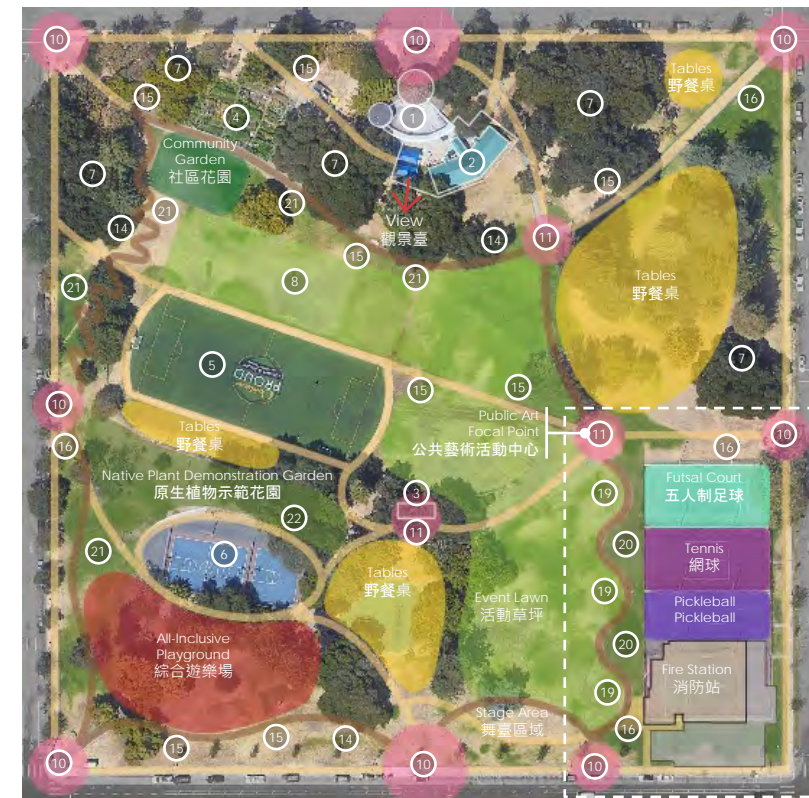
■ All Respondents | 所有調查對象
■ 94606 Respondents | 94606 調查對象



Option 1 | 選項 1



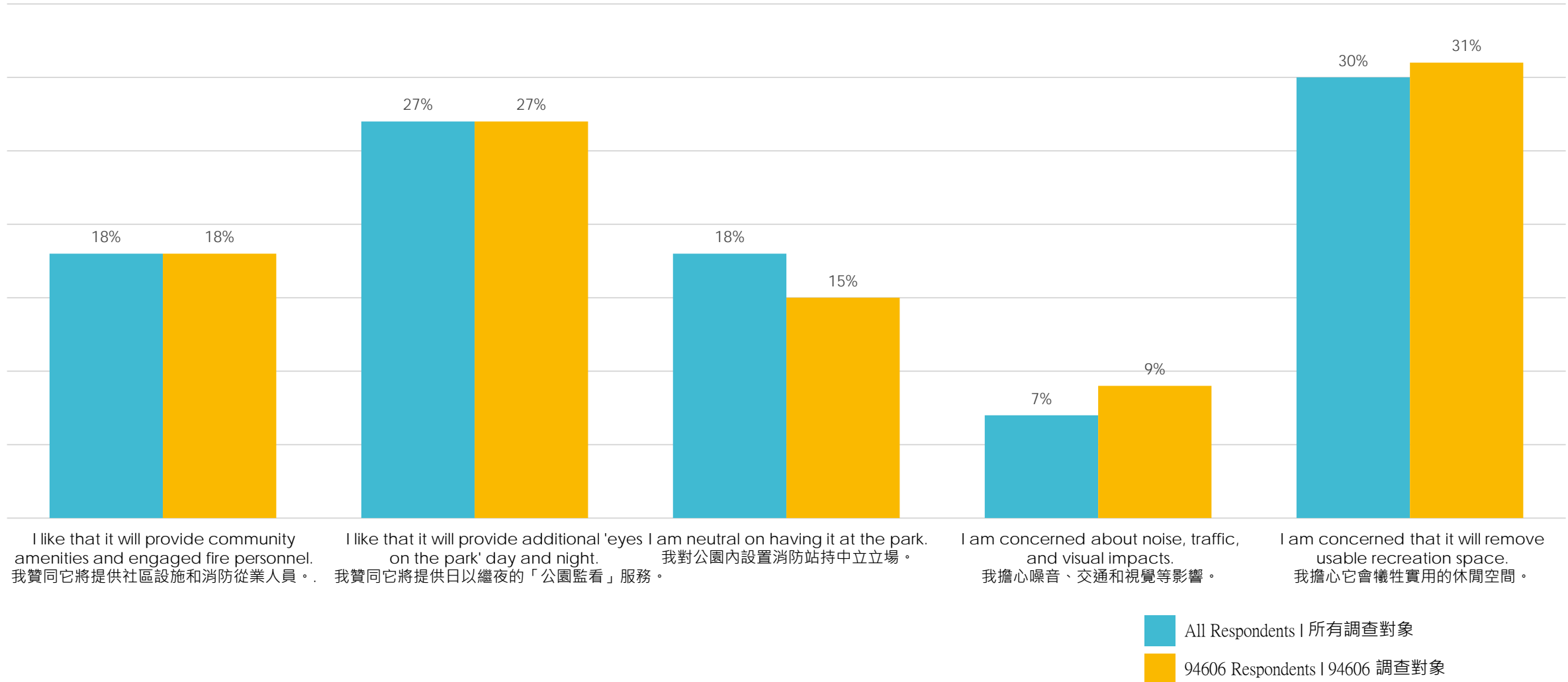
Option 2 | 選項 2



Option 3 | 選項 3

Survey Results | 問卷調查結果

What statement best reflects your thoughts about including a fire station at San Antonio Park?
對於在 San Antonio 公園納入消防站，哪一項陳述最能反映您的想法？



AGENDA | 議程

01 Project Development + Status
項目發展+現狀

02 CEM #2 Survey Results
第 2 次社區參與會議問卷調查結果

03 **Master Plan**
總體規劃

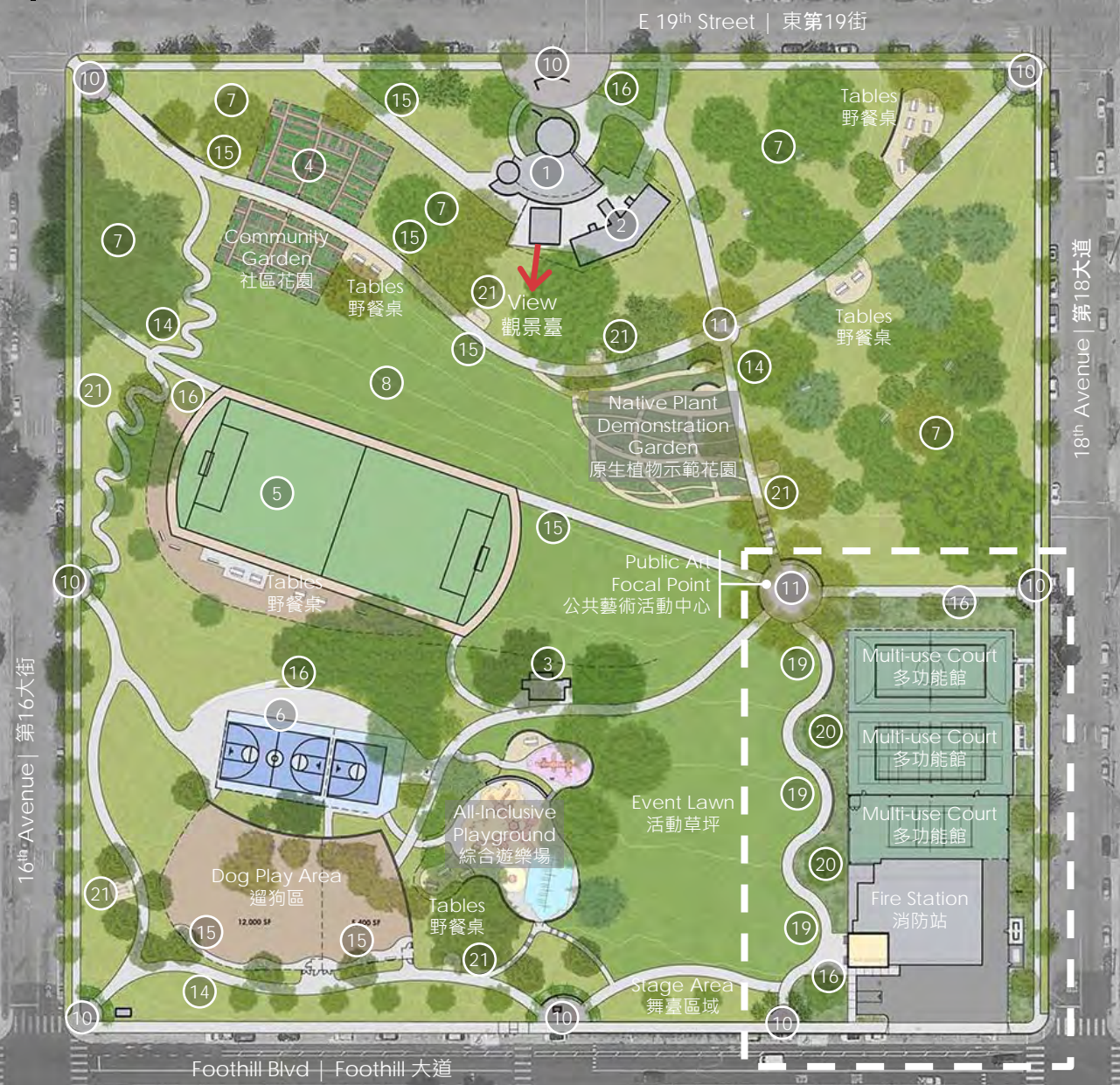
04 Discussion + FAQs
討論+常見問題

Presented in order of
survey priority results
priority results
按照調研結果的優先順序展示

Recommended Master Site Plan | 推薦的總體場地規劃

LEGEND | 圖例

- 1 Existing Recreation Center | 現有休閒中心
- 2 Existing Head Start | 現有啟蒙中心
- 3 Existing Restroom | 現有洗手間
- 4 Existing Community Garden | 現有社區花園
- 5 Existing Soccer Field | 現有足球場
- 6 Existing Basketball | 現有籃球場
- 7 Existing Oak Grove | 現有橡樹林
- 8 Existing Amphitheater | 現有圓形露天劇場
- 9 Fire Station | 消防站
- 10 Pedestrian Gateway | 行人通道
- 11 Pathway 'Knuckle' | "橋樑" 通路
- 12 Public Art Focal Point | 公共藝術活動中心
- 13 Picnic Tables | 野餐桌
- 14 ½ Mile Walking/Jogging Loop | ½ 英里步行/慢跑環道
- 15 Benches and Wheelchair Space | 長椅和輪椅區
- 16 Bicycle parking | 自行車存放處
- 17 Event Lawn | 活動草坪
- 18 Stage Area | 舞臺區域
- 19 Festival Booth Area | 節日展臺區
- 20 Native Plant Demonstration Garden | 原生植物示範花園
- 21 Exercise Equipment Station | 運動器材站
- 22 All-Inclusive Playground | 綜合遊樂場
- 23 Community Garden | 社區花園
- 24 Dog Play Area | 遛狗區
- 25 Multi-use Court | 多功能館

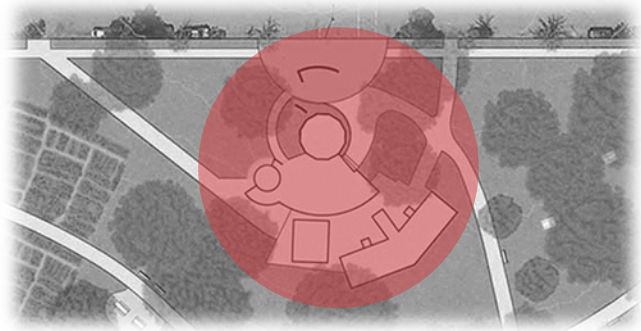


Future Study Areas | 未來研究區域

Although the survey results (1+2) place improvements to rec. center and the skate park as mid level priorities, there is enough community interest that we feel that these two items require further investigation by the City in the form of feasibility studies.

儘管調研報告結果（第一和第二次）裡面都將娛樂中心和滑板公園的改造優先順序排在中等，但社區表現出了足夠的興趣使我們認為這兩項需要以可行性研究的方式做進一步的研究。

Recreation Center | 休閒中心



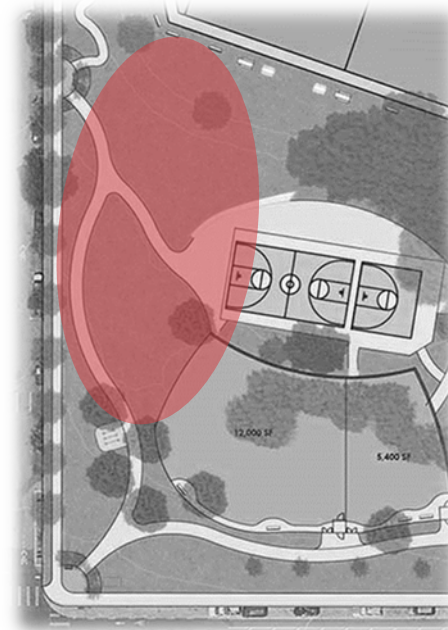
Recommendations

- ❖ Maintenance repairs including:
 - ❖ Remove graffiti
 - ❖ Repair/replace waterproof coating over the rec center
 - ❖ Repair/paint existing woodwork including dry rot repair as needed
 - ❖ ADA upgrade for ramp and stairs
 - ❖ New exterior paint
- ❖ Feasibility study including:
 - ❖ Staffing
 - ❖ Programming
 - ❖ Site constraints
 - ❖ Building expansion
 - ❖ Collaboration with non-profits

推薦項目

- ❖ 維保維修包括：
 - ❖ 清除塗鴉。
 - ❖ 修護/更換休閒中心的防水塗層。
 - ❖ 現有木作維護/上漆，包含必要時的乾腐修護。
 - ❖ 通道和樓梯的 ADA 升級。
 - ❖ 新的外牆漆面。
- ❖ 可行性研究包括：
 - ❖ 人員配備
 - ❖ 設計規劃
 - ❖ 場地限制條件
 - ❖ 建築擴建
 - ❖ 與非營利組織合作

Skate Park | 滑板公園



Recommendations

- ❖ Design feature considerations:
 - ❖ Poured-in-place concrete
 - ❖ A place for sitting/resting
 - ❖ Clear signage and lighting for nighttime use
 - ❖ Drinking fountain
- ❖ Feasibility study including:
 - ❖ Environmental impacts
 - ❖ Market demand (alternate locations)
 - ❖ Operations, maintenance

推薦項目

- ❖ 設計特點考慮：
 - ❖ 現澆混凝土
 - ❖ 坐和休息的地方
 - ❖ 供夜間使用的清晰標誌和照明
 - ❖ 飲水系統
- ❖ 可行性研究包括：
 - ❖ 環境影響
 - ❖ 市場需求（替代地點）
 - ❖ 運行，維護

Lighting | 照明

Recommendations

- ❖ New pedestrian scaled LED pole lighting should be installed at appropriate intervals along park paths for public safety and wayfinding. (2003 M.P.)
- ❖ Provide new light fixtures at soccer field, basketball court, and hardcourts.
- ❖ All lighting to comply with California Dark Sky Ordinance. (2003 M.P.)

推薦項目

- ❖ 應沿公園路徑以適當間距設置整排的新行人 LED 燈柱，以維護公共安全並提供指路功能。(2003 M.P.)
- ❖ 在足球場、籃球場和硬場地提供新的照明設備。
- ❖ 所有照明皆符合加州夜間照明法令。(2003 M.P.)



Playground | 遊樂場



Recommendations

- ❖ Provide new inclusive playground for children aged 2 to 5 (2003 M.P.) and 5 to 12.
- ❖ Play equipment to be universally designed and be sensory stimulating. (2003 M.P.)
- ❖ Playground to include new picnic tables, benches and lighting. (2003 M.P.)
- ❖ The playground should be sited on an accessible path close to the existing renovated bathrooms. (2003 M.P.)

推薦項目

- ❖ 為 2 到 5 歲 (2003 M.P.) 和 5 到 12 歲的兒童提供新的全包式遊樂場。
- ❖ 遊樂設備具有通用設計並具有刺激感。(2003 M.P.)
- ❖ 包括新的野餐桌、長凳和照明設備的遊樂場。(2003 M.P.)
- ❖ 遊樂場應設在靠近現有翻新浴室的無障礙通道上。(2003 M.P.)



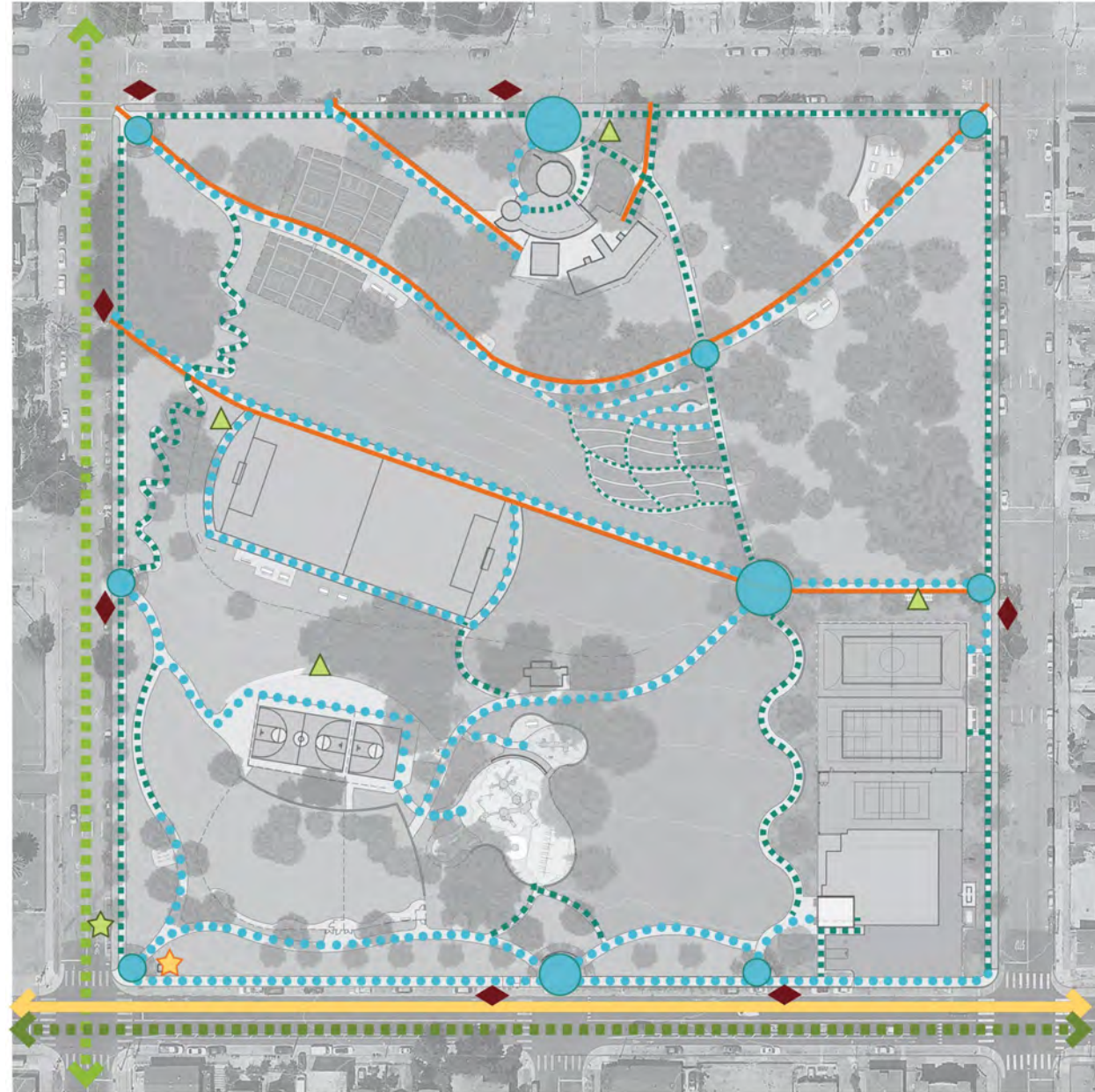
Accessibility + Circulation | 無障礙 + 循環

Recommendations

- ❖ Improve neighborhood connections to San Antonio Park.
- ❖ Provide welcoming and visible pedestrian entries. (2003 M.P.)
- ❖ Improve pedestrian connections to currently more isolated parts of the park. (2003 M.P.)
- ❖ Provide accessible and unobstructed pedestrian paths that connect all elements, spaces, and facilities within the Park. (2003 M.P.)
- ❖ Provide new accessible parking spaces on each side of the park. (2003 M.P.)
- ❖ Provide new wayfinding signage throughout the park.
- ❖ Provide a ½ mile loop trail interior to the park for exercise with parcourse elements.

推薦項目

- ❖ 改善鄰近地區和 San Antonio 公園的連結。
- ❖ 提供迎賓用的可見行人入口。(2003 M.P.)
- ❖ 針對公園中目前較隔絕的部分改善行人連結。(2003 M.P.)
- ❖ 提供無障礙行人通道，連結公園內所有場地、空間和設施。(2003 M.P.)
- ❖ 在公園每一側提供新的無障礙停車場。(2003 M.P.)
- ❖ 在全公園提供新的指路標誌。
- ❖ 在公園內部提供半英哩的步行圈供健身運動之用。



LEGEND | 圖例

- ★ Bus Stop
巴士車站
- AC Transit Routes 40 & 840
AC過境路線40和840
- Service Vehicular Access
服務車輛通道
- ★ Bike Share Station
自行車共享站
- ▲ Bike Parking
自行車停放處
- Buffered Bike Lane (Class 2B)
緩沖自行車道 (2B類)
- Neighborhood Bike Route (Class 3B)
鄰里自行車道 (3B類)
- ◆ Accessible Street Parking
無障礙街道停車位
- Pedestrian Node
行人節點
- ... Pedestrian Accessible Path
行人無障礙通道
- ... Pedestrian Path
人行道

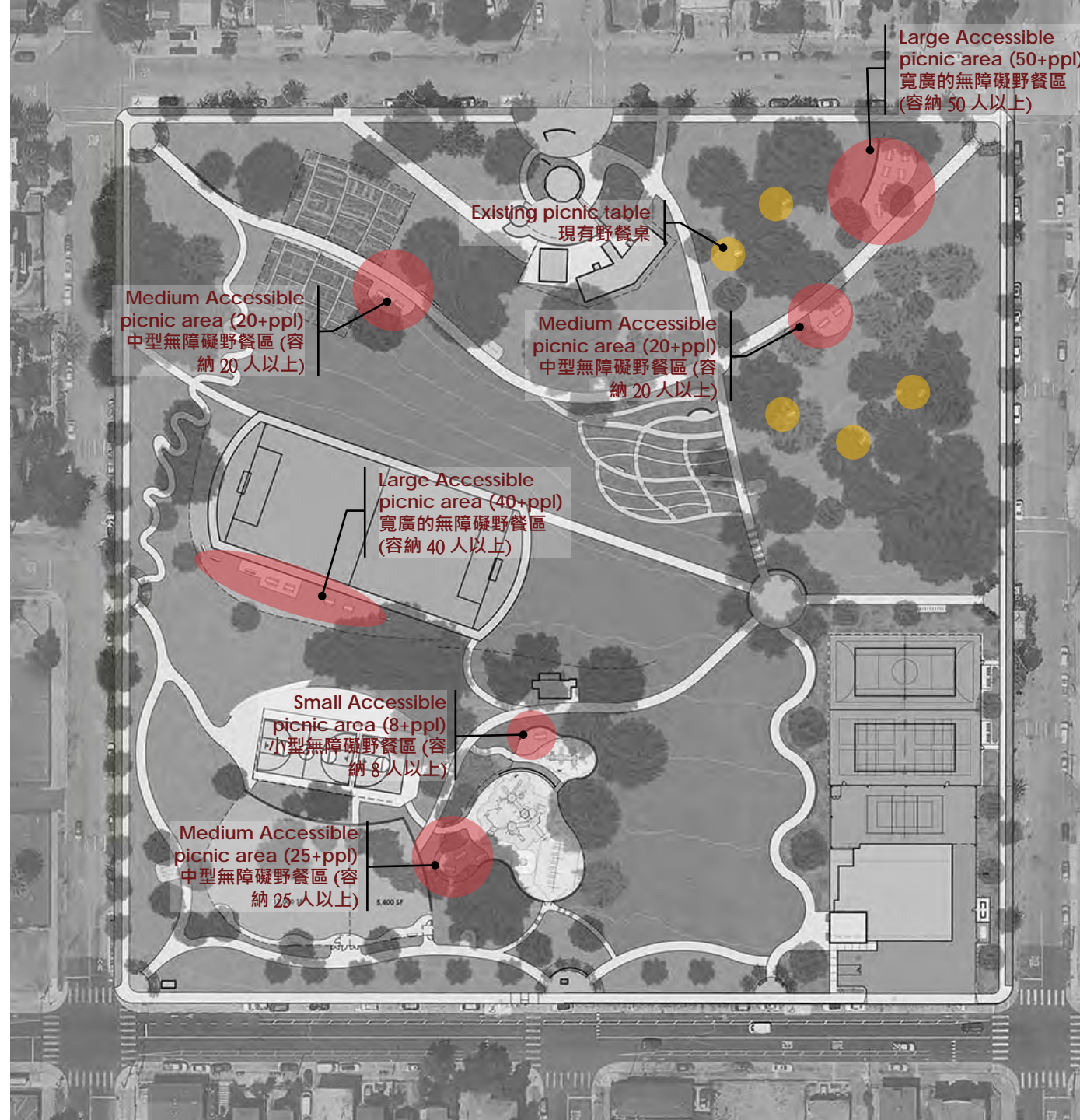
Picnic Areas | 野餐區

Recommendations

- ❖ Picnic tables should be provided for gatherings. (2003 M.P.)
- ❖ A range of picnic table groupings should be provided including single picnic table and group picnic table areas.
- ❖ At least one picnic table in each area of the park should be an accessible table on an accessible path of travel.
- ❖ Highly used lawn areas should remain open for more informal picnics. (2003 M.P.)

推薦項目

- ❖ 應提供野餐桌供聚會之用。(2003 M.P.)
- ❖ 應提供野餐桌聚集區，包含單張野餐桌和多張野餐桌等區域。
- ❖ 公園內的每個地區至少配置一張無障礙野餐桌，位於無障礙通道上。
- ❖ 高度使用的草坪區應保持開放供更多非正式野餐支用。(2003 M.P.)



Community Garden | 社區花園



Recommendations

- ❖ Provide an expanded community garden area with ADA compliant garden beds.
- ❖ Provide a tool storage shed for community tool storage.
- ❖ The community gardens should incorporate signage with information on how to rent a plot.
- ❖ Provide community-based plots for partnership with a local nonprofit.
- ❖ Provide picnic tables for group learning.

推薦項目

- ❖ 針對擴大的社區花園面積提供 ADA 相容的花園床。
- ❖ 提供用於社區工具儲存區的工具貯藏棚。
- ❖ 社區花園應將標示以及如何租用小塊土地的資訊結合在一起。
- ❖ 提供社區的平面圖，與當地的非營利組織建立合作關係。
- ❖ 提供野餐桌供小組學習。

Soccer + Basketball | 足球 + 籃球



Recommendations

- ❖ Provide new pole lights for nighttime play.
- ❖ Upgrade existing picnic tables and benches and provide an accessible picnic table at the soccer field.
- ❖ Replace existing decomposed granite track with rubber track surfacing. (2003 M.P.)
- ❖ Improve drainage at the northeast corner of the track.
- ❖ Provide a level area east of the soccer field for practice.
- ❖ Adjustable height basketball hoops.

推薦項目

- ❖ 提供新桿燈以進行夜間比賽。
- ❖ 升級現有的野餐桌和長凳，並在足球場上提供方便使用的野餐桌。
- ❖ 用橡膠履取代現有已分解的花崗岩軌道。(2003 M.P.)
- ❖ 改善軌道東北角的排水。
- ❖ 在足球場以東提供一個平坦的區域進行練習。

Dog Play Area | 遛狗遊樂區



Recommendations

- ❖ Enclosed dog play areas to follow the design criteria outlined in the City of Oakland's *Policy Recommendations on Dogs in Oakland Parks*. Main criteria include:
 - ❖ Separate fenced enclosures for small dogs and large dogs.
 - ❖ The fencing should be 4' high decorative metal fencing with double gated entries.
 - ❖ The play area should include a community kiosk, benches and picnic tables.
 - ❖ The surfacing of the dog play should be easy to maintain, permeable, and minimize odors.
 - ❖ The dog play area should include signage and lighting.

推薦項目

- ❖ 封閉的遛狗遊樂區應遵循屋崙市的屋崙市公園狗隻政策建議中所列舉的設計標準。主要條件包括：
 - ❖ 小型和大型犬應分別用圍欄圍起。
 - ❖ 柵欄應為 4 英尺高的裝飾金屬柵欄，帶有雙門入口。
 - ❖ 遊樂區應包括社區服務亭、長凳和野餐桌。
 - ❖ 狗遊樂器材的表面應易於維護、具有可滲透性並且能夠將氣味減至最低。
 - ❖ 狗的遊樂區應包括標示和照明。

Hardcourts | 硬地球場



Recommendations

- ❖ Replace the existing tennis courts with multiuse courts.
- ❖ Renovated courts to include new surfacing, fencing, signage, and seating areas. (2003 M.P.)
- ❖ Court sports could include tennis, pickleball, volleyball, futsal, and handball.
- ❖ Provide lighting for nighttime use. (2003 M.P.)
- ❖ The hardcourts should include a drinking fountain. (2003 M.P.)

推薦項目

- ❖ 將現有的網球場以多用途球場取代。
- ❖ 翻新後的球場包括新的鋪面、圍欄、標示和休息區。(2003 M.P.)
- ❖ 球場運動可能包括網球、匹克球、排球、五人制足球和手球。
- ❖ 提供夜間照明。(2003 M.P.)
- ❖ 硬地球場應該包括飲水機。(2003 M.P.)

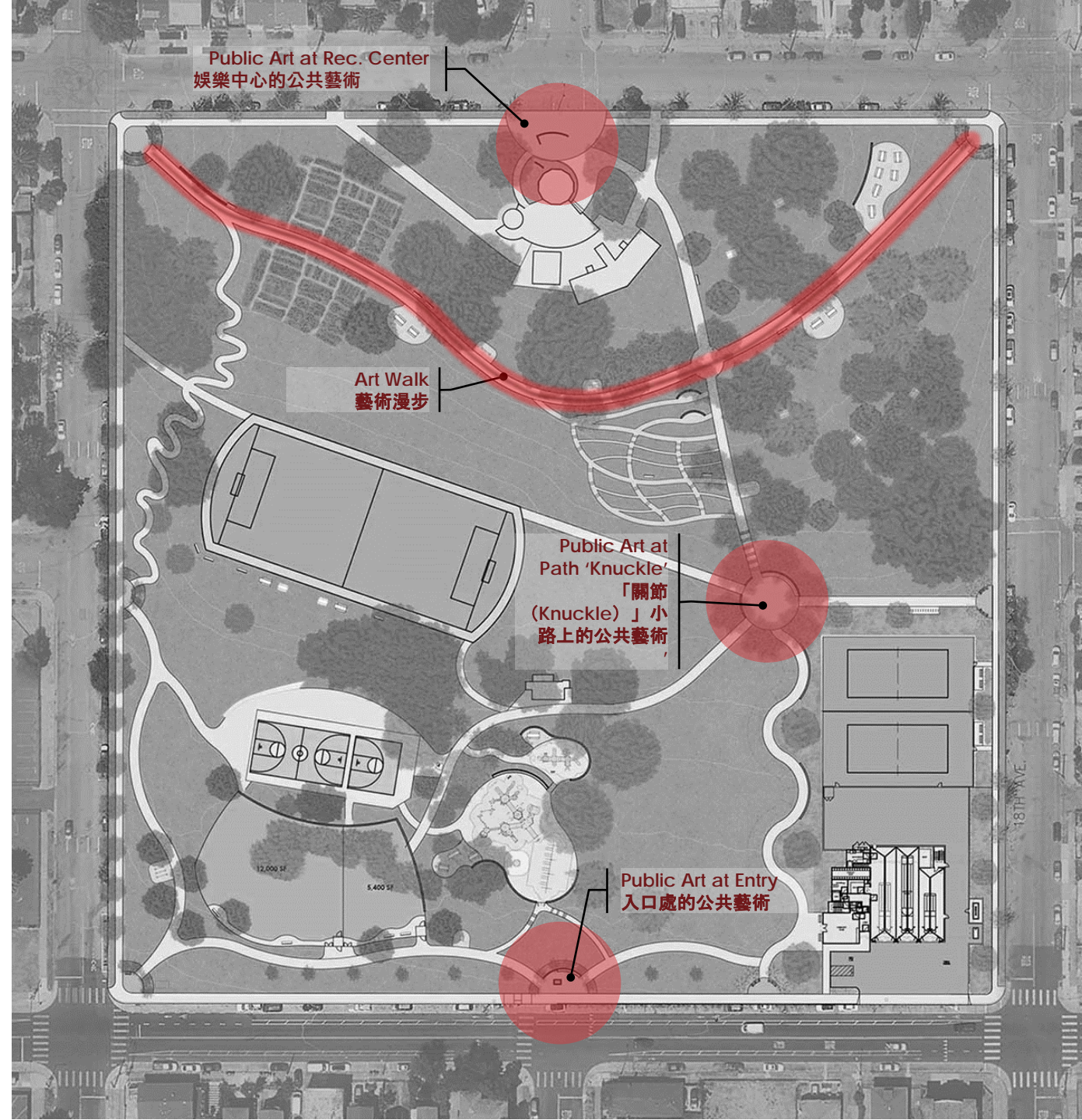
Public Art | 公共藝術

Recommendations

- ❖ The art element should be generated from a collaborative process with the community and the City of Oakland.
- ❖ The art element should enhance the historic, cultural, aesthetic, and interpretive potential of the park.
- ❖ The art element should consider maintenance requirements and minimize the need for specialized practices.

推薦項目

- ❖ 藝術元素應該透過與屋崙市和社區的合作過程所產生。
- ❖ 藝術元素應增強公園的歷史、文化、美學和詮釋潛力。
- ❖ 藝術元素應考慮維護要求，並且將專業做法的需要減至最低。



Planting Palette | 種植調色板


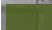
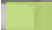

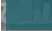
Recommendations

- ❖ An arborist report should be prepared to document existing trees, recommend trees for removal, and recommend processes for preservation of healthy trees.
- ❖ Planting at the Park should minimize unused lawn areas. (2003 M.P.)
- ❖ Planting at the park should incorporate low water use plants, be durable, low maintenance, and proven to perform well locally. (2003 M.P.)
- ❖ Plantings should be selected and maintained to keep views open and improve public safety.
- ❖ Any new trees should be carefully sited to provide shade where necessary and to minimize future maintenance.

推薦項目

- ❖ 需準備一份樹木栽培專家的報告，記錄現有樹木，建議移動的樹木以及保存健康樹木的流程工藝。
- ❖ 在公園種植應該將未使用的草坪區域減至最少。(2003 M.P.)
- ❖ 公園內的種植應採用低耗水的植物，並且耐久、低維護成本，並且經證實在當地有良好的種植成效。(2003 M.P.)
- ❖ 應該選擇並維護樹木，以保持視野開闊並改善公共安全。
- ❖ 任何新樹木應該仔細選定種植位置，提供必要的遮蔭，並且將日後的維護減至最低。

LEGEND | 圖例

	Lawn / 草坪
	Low water use planting / 低水分種植
	Synthetic turf / 人工草皮
	Oak grove no water use, mulch / 不需用水/覆蓋的橡樹林
	Medium water use accent planting / 中等用水的主景觀植物



AGENDA | 議程

- 01** Project Development + Status
項目發展+現狀
- 02** CEM #2 Survey Results
第 2 次社區參與會議問卷調查結果
- 03** Master Plan
總體規劃
- 04** Discussion + FAQs
討論+常見問題

Public Art

公共藝術

The Master Plan for San Antonio Park will plan for new permanent public art, strengthening community connections.

- ❖ What makes you feel you are a part of the San Antonio Park community?
- ❖ What values and images do you associate with the park?
- ❖ Enter your answers in “CHAT” feature or on website

San Antonio 公園的總體規劃將規劃新的永久性公共藝術品，並且加強社區聯繫。

- ❖ 什麼 原因會讓 感覺自己屬於 San Antonio 公園社區的一份子？
- ❖ 什麼 價值觀和形象會讓您 和公園建立關聯？
- ❖ 在「聊天」功能或是 網站輸入您的答案

project website | 項目網站

www.oaklandca.gov/projects/sanantoniopark

Recreation Center

育樂中心

project website | 項目網站

www.oaklandca.gov/projects/sanantoniopark

Part of the \$1M funding from Measure KK is designated for identified repairs at the Recreation Center. The new Master Plan will be an important tool in requesting future funding for Center staff and providing services. As a starting point, please select your top priority:

- ❖ What types of programming should be offered at this Recreation/Community Center?
 1. Expanded childcare/preschool
 2. Afterschool programs for school aged children
 3. Adult/senior wellness programs
 4. Family navigation center
 5. Education/skill development opportunities
 6. Manage sports programs/equipment
 7. Partnership w/ non-profit groups

- ❖ Other ideas/comments? Enter in "CHAT" feature or on website

Measure KK 中部分 1 百萬美元的資金指定用於育樂中心的確定維修。全新的總體計劃對於為中心工作人員提供未來資金並提供服務將會是重要的工具。首先，請選擇您需要最優先處理的事項：

- ❖ 什麼類型的設計規劃 是本 育樂/社區中心應該提供的？
 1. 擴大托兒/學前教育
 2. 學齡兒童的課後計畫
 3. 成人/年長者保健計畫
 4. 家庭導覽中心
 5. 教育/技能發展機會
 6. 管理運動課程/設備
 7. 與營利/非營利團體合作

- ❖ 其他想法/意見？在「聊天」功能或是在網站輸入

FAQs

常見問題

project website | 項目網站

www.oaklandca.gov/projects/sanantoniopark

San Antonio Master Plan
Community Meeting #3

- ❖ Has the City engaged surrounding area property owners? What was the process? And where is the documentation for this process?
本市是否有請周邊地區的業主參與？過程是什麼？此過程的文件在哪裡？
- ❖ According to the City of Oakland, what are demographics of San Antonio Park area and how does this mirror the demographical participation in the process so far? Also, according to the City, what is the estimated population/resident number count in the San Antonio Park area?
根據屋崙市，San Antonio 公園區域的人口統計資訊為何？到目前為止，此資料如何反映人口參與？同時，根據本市資料，San Antonio 公園區域估計的人口/居民人數是多少？
All properties (over 8,400 addresses) within 1-mile radius of Park have received 4 separate mailings in addition to ongoing communications thru City's public information channels. Over 100 Community based organizations also receive ongoing updates to inform members. Public meetings held in languages reflecting demographics provided by City's Department of Race & Equity. Continual oversight by Race & Equity to ensure process is inclusionary. All materials, communications and feedback will be documented in Master Plan.
除了透過本市的公開資訊管道持續溝通以外，公園 1 英里半徑內的所有物業已經收到 4 封單獨郵件。有超過 100 間社區型企業也持續收到最新消息以便通知會員。以反映人口統計特徵的語言進行的公開會議。所有資料、通訊以及意見反饋將會記錄在總體計劃和種族和平等部門支援文件。1 英里半徑內有 8,400 個地址。本市的種族和平等部門提供口譯的需要。有超過 100 位首席品牌官 (CBO) 接受持續溝通。委員會委員主計室提供用於傳播資訊的所有材料。種族和平等部門持續監督以確保多元化和包容性的努力。
- ❖ How many community stakeholders participated in the first two series of virtual community meetings and what were the demographics? What percentage of San Antonio Park area stakeholders have participated in the process?
社區利害關係人參與前面兩場虛擬社區會議系列的人數，以及人口統計資料分別是多少？San Antonio 公園區域利害關係人參與過程的百分比是多少？
189 participants, demographics were not recorded although most in CEM 1 identified as neighborhood residents.
189 位參與者，人口統計未記錄，儘管 CEM 1 中多數為鄰近居民。
- ❖ What is the timeline for PRAC, Planning Commission and Council? **This timeline is TBD**
PRAC、規劃委員會和理事會的時間表為何？此時間表尚待決定
- ❖ Why is the process moving so quickly? 為什麼此過程進展非常快速的原因？
The community engagement process schedule is typical and supports sustained community participation
社區參與過程時間表是典型的，並且可支持社區的持續參與

FAQs

常見問題

project website | 項目網站

www.oaklandca.gov/projects/sanantoniopark

- ❖ What were the qualifications/specs for the list that showed examples of fire stations that have been built in Parks around the U.S. that was distributed? How does this list offer context to the proposed move of OF4 to San Antonio Park?
如果要顯示分佈在美國各地的公園中設置消防站的例子，清單需要具備什麼資格/規格？本清單如何提供相關背景，支持提議將消防站從 OF4 搬遷至 San Antonio 公園？
No specific specs were used. The list developed in response to public comment that Fire Stations don't belong in a park setting when, in fact, it's fairly common.
未使用具體規格。本清單是根據消防站不屬於公園 (但事實上此情況相當普遍) 的大眾意見所制定的。
- ❖ When City staff considered San Antonio Park as an option for the relocation of OF4, where and when did community impacts/input factor into the calculus?
當本市職員將 San Antonio 公園視為 OF4 搬遷的選擇，社區影響/計算法投入因素地點與時機為何？
In considering the feasibility of relocating FS 4, all impacts are considered. The community engagement process provides opportunity for input which is also considered in the evaluation.
在考量搬遷 FS 4 的可行性時，所有影響因素都會納入考量。社區參與過程中是否提供表達意見的機會也是評估時考量的因素。
- ❖ Can stakeholders have the cost estimates for park improvements separated from the fire station build out?
利害關係人是否能夠將公園改善的成本預估與消防站的建造分開？
- ❖ Can the team "breakout" the proposed San Antonio Park improvement items individually with a line-item cost for each one?
團隊是否能夠藉由為每個人提供明細項目成本「突破」個別提議的 San Antonio 公園改善項目？
The Master Plan will provide Rough Order of Magnitude (ROM) costs for recommendations by specific amenity (ex. Playground) or like improvements (ex. Lighting). As specific projects are developed through the City's bi-annual CIP process, detailed costs will be analyzed. Fire Station building and site amenities' cost estimates will be separated.
總體計劃僅會透過特定的便利設施或類似改善提供 ROM 成本。由於具體專案是透過本市每兩年一次的 CIP 流程所發展，因此將會分析詳細成本。總體計劃將會提供 ROM 成本作為建議。消防站建築以及現場設施的成本預估將會分開

FAQs

常見問題

project website | 項目網站

www.oaklandca.gov/projects/sanantoniopark

- ❖ Why hasn't the community been asked the following survey question: Do you want a fire station in San Antonio Park?
為什麼沒有向社區詢問以下調查問題：您是否希望在 San Antonio 公園設置消防站？
- ❖ Why isn't there a San Antonio Park Master Plan option without a fire station?
為什麼 San Antonio 公園總體計劃選擇中沒有包括消防站？
The Master Plan process considers the feasibility of relocating FS 4 to the park. The community is invited, through a variety of channels, to express opinion within this context.
總體計劃過程會考慮將 FS 4 搬遷至公園的可行性。邀請社區透過各種不同管道針對此背景條件表達自己的意見。
- ❖ Why was eminent domain not an option? **Requires Council direction on policy**
為什麼不可以選擇國家徵用權？**需要委員會提供有關政策的指示**
- ❖ Have we explored other properties, ex: East Bay Blueprint location and lot at 14th Ave?
我們有沒有探索其他物業，例如：East Bay Blueprint 位置和地段 14th Ave？
Yes and continue to do so. Properties are evaluated against the criteria shown earlier
是的，並且會繼續這樣做。根據前面顯示的條件評估物業
- ❖ Please clarify the process of publicizing the survey, dates, and options for opposing the fire station.
請說明公佈反對設立消防站問卷調查的過程、日期與選擇。
Both surveys were open for responses for approximately 2 weeks. The dates were listed on the announcement flyers, CEM presentations, project webpage and other City media sites. Both surveys were extended by 2-3 days to accommodate additional distributions. There were a variety of options for community to express opinions about the Fire Station including at CEM presentations, survey questions, and comments. All input is documented and input considered in the Master Plan recommendations.
兩項調查均開放大約 2 週時間可以回覆。日期會列於公告傳單、CEM 簡報、企劃網頁以及其他本市媒體網站。兩項問卷調查會延長 2-3 天以容納其他發行版本。社區有多種選擇可以表達有關消防站的意見，包括 CEM 簡報、問卷調查問題以及意見。所有意見都會記錄在案，並且納入總體計劃建議考量。

Discussion

討論

Discussion Rules

- ❖ Please raise your hand and you will be called upon in order the hand was raised in the participants list.
- ❖ You have two minutes to speak.
- ❖ Feel free to write anything in the chat.
- ❖ Submit other comments and questions through the project web page by clicking on the green button at the top of the project web page or by emailing gjohnson@luster.com through May 13th.

討論規則

- ❖ 請舉手，我們將根據參與者名單按舉手順序請您發言。
- ❖ 您有兩分鐘發言時間。
- ❖ 可以在「聊天」功能中寫任何觀點。
- ❖ 請在5月13日之前透過點擊在項目網站網頁頂部的綠色按鈕提交評論和問題，或者將評論和問題發到郵箱地址 gjohnson@luster.com。

project website | 項目網站

www.oaklandca.gov/projects/sanantoniopark

A large group of geese is scattered across a green grassy field. In the background, there is a soccer field with a goal, surrounded by trees and a residential area with houses and a fence. The scene is brightly lit, suggesting a sunny day.

Thank you!

謝謝！