



# A Strong Local Entrepreneurial Ecosystem for Recovery

**Heidi Pickman**

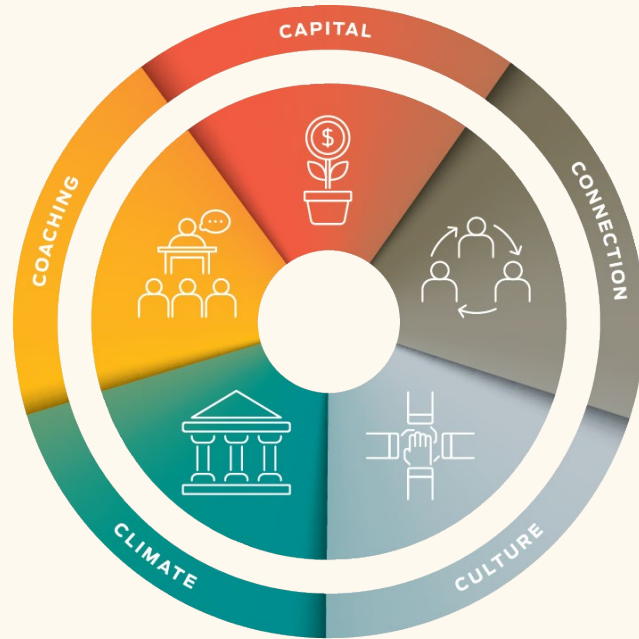
**VP, Engagement and External Relations**

# Value of Small Business



The Hatch  
Pancho Kachingwe

# Small Business Recovery Needs



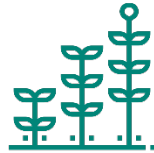
# Who We Are

- 300+ Members Statewide
  - Community-based and Federal TA providers: WBCs, SBDCs, Score chapters, USDA grant recipients
  - CDFIs and community based-lenders
  - Local chambers
- Serving
  - 84,000 businesses annually
  - 101,000 jobs created or supported
  - \$7.5 billion in economic activity
  - ~ 70% are low-moderate income
  - ~ 70% are business owners of color
  - ~ 50% are women

# What We Do



We advocate in Sacramento and DC for policy that promotes the member network and their small business clients.



We expand resources and build capacity for our member organizations.



We convene the network of organizations working with small businesses to share best practices and promote new trends.



We're an information hub, gathering and disseminating data on trends, policy, sector innovations, and sector-related news.

# What We Do

