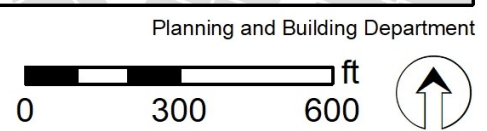


Broadway Valdez District Specific Plan

Project Status

<https://bit.ly/2vrCK3H>
 Contact: Laura Kaminski, lkaminski@oaklandca.gov



Date: 3/4/2020

Project Status	Residential (units)	Retail (sf)	Office (sf)	Hotel (rooms)
Completed	1,605	234,609	50,000	0
Under Construction	1,039	104,542	0	159
Building Permit Filed	398	13,891	0	0
Approved Planning Permit	322	13,380	49,000	0
Application Filed	198	4,132	0	0
Total Projects	3,562	370,554	99,000	159

1
1.) 3416 Piedmont Ave.
9 Residential Units
750 sf Retail
Status: Under Construction



2.) 3300 Broadway
45 Residential Units
(4 affordable units)
2,891 sf Retail
California Capital Investment Group
Status: Building Permit Filed



3.) 3073 Broadway
432 Residential Units
22,000 sf Retail
CityView
Status: Completed



4.) 3001 Broadway
39,000 sf Retail
Portfolio Dev.
Status: Completed



5.) 3000 Broadway
127 Residential Units
8,000 sf Retail
Low Enterprises
Status: Under Construction



6.) 2964 Broadway
26,312 sf Retail
CVS Pharmacy
Status: Completed



7.) 295 29th St.
91 Residential Units
Status: Under Construction



8.) 2855 Broadway
68 Residential Units
9,200 sf Retail
Alliance Residential Co.
Status: Under Construction

9a.) 2820 Broadway
103 Residential Units
2,228 sf Retail
Alliance Residential Co.
Status: Under Construction

9b.) 2800 Broadway
47 Residential Units
6,130 sf retail
Status: Approved Planning



10.) 2630 Broadway/325 27th St.
253 Residential Units
36,288 sf Retail
Hanover
Status: Completed



11.) Valdez & 27th Street Plazas
Plazas and sculpture gardens
Hanover
Status: Completed



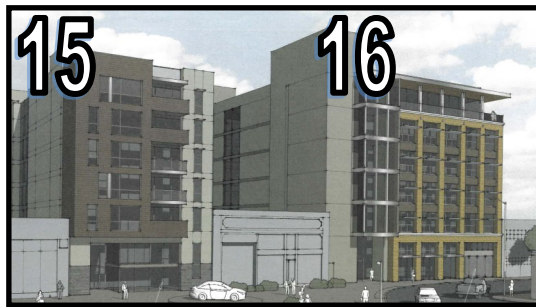
12.) 2400/2450 Valdez St
224 Residential Units
23,465 sf Retail
Hanover
Status: Completed



13.) 277 27th St
450 Residential Units
59,000 sf Retail
Holland Partner Group
Status: Under Construction



14.) 2401 Broadway
72 Residential Units
159 Hotel Rooms
17,439 sf Retail
Signature Devlp. Group
Status: Under construction



15.) 2500 Webster St
30 Residential Units
6,425 sf Retail
Signature Devlp. Group
Status: Under Construction

16.) 2424 Webster St
49,000 sf office
6,250 sf Retail
Signature Devlp. Group
Status: Approved Planning



17.) 2415 Valdez St
89 Micro Living Quarters
(10 affordable)
1,500 sf Retail
Trestle Development
Status: Under construction

18.) 2425 Valdez St
71 Micro Living Quarters
1,024 sf Retail
Trestle Development
Status: Completed



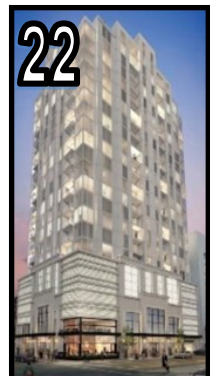
19.) 2301 Broadway
105 Residential Units
35,000 sf Retail
50,000 sf Office
Signature Devlp. Group
Status: Completed



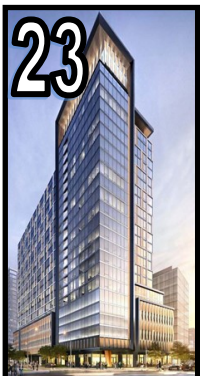
20.) 2315 Valdez St
235 Residential Units
(36 affordable units)
15,000 sf retail
Thompson Dorfman
Status: Completed



21.) 2302 Valdez St
193 Residential Units
31,500 sf Retail
WOOD Partners
Status: Completed



22.) 2305 Webster St
130 Residential Units
3,000 sf Retail
Segula Investments
Status: Building Permit Filed



23.) 2270 Broadway
223 Residential Units
8,000 sf Retail
Hines
Status: Building Permit Filed



24.) 88 Grand Ave
275 Residential Units
(12 affordable units)
1,000 sf retail
Status: Approved Planning