

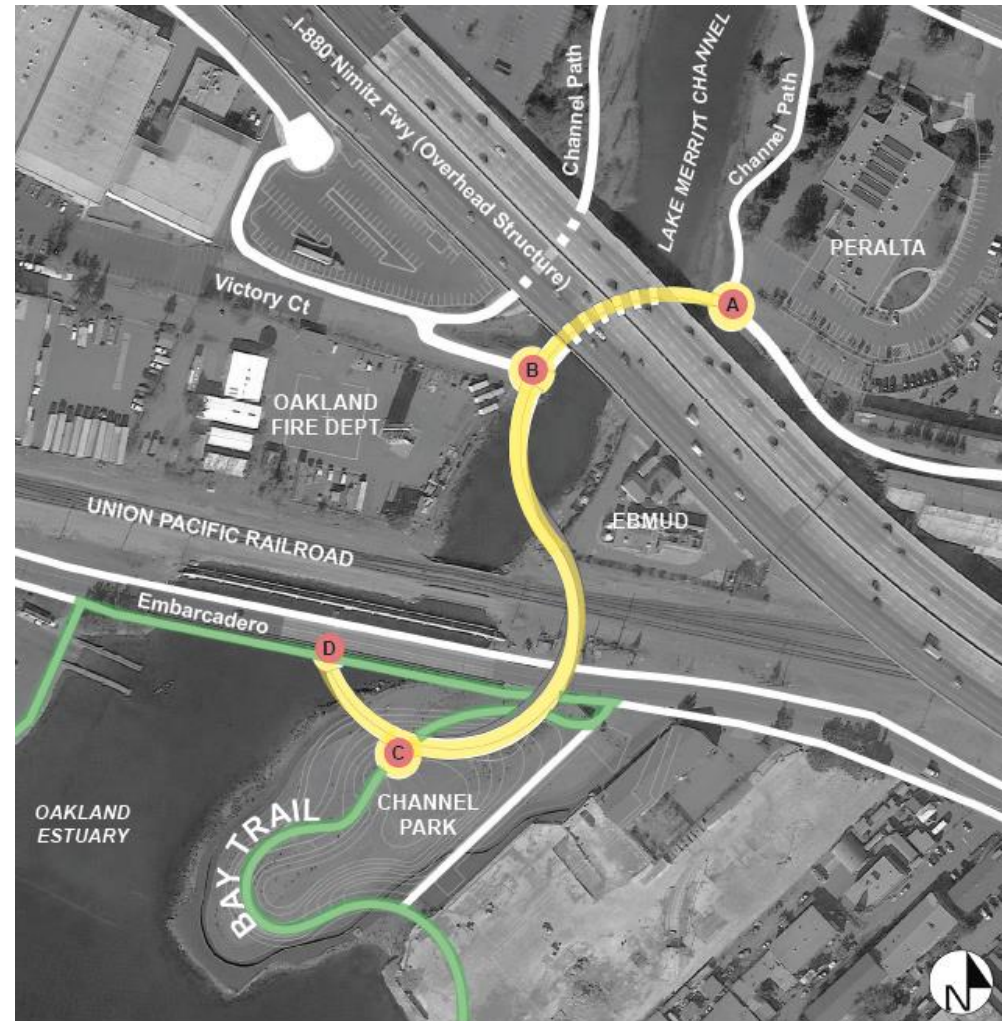
#### 4-8-2019 BCDC Design Review Board: LM2BT Update

- Presentation: <http://www.bcdc.ca.gov/drb/2019/0408LakeMerrittBayTrailBridgeEx.pdf>

- Revised Design. Revisions provide additional touch-downs at Victory Court (B) and Channel Park (C) as shown at right. To feed these touch-downs, parallel bridge decks will supplement portions of the main deck. The plan is to demolish the abandoned railroad bridge at Victory Court and meet the need for pedestrian crossings by the parallel deck segment from (A) to (B).

- Design Review Board member comments:

- One DRB member suggested a need for more coordination between the designs of Channel Park and the bridge, especially at touch-down (C).
  - One DRB member said that if the City intends to spend so much on this bridge, it should really improve the connecting paths along the channel to reduce flooding and improve surfaces. This comment may inform Measure DD planning for work along the channel as called out in [Bond Section III B](#).
- Status. The design is at 25% per Steven Grover and is “fully funded” per Diane Tannenwald, who mentioned grants as the source. Steven Grover expressed great optimism about obtaining construction funding from upcoming transportation grants. Diane said construction will begin in 2022.
- Subsequently, we learned that Diane has left Public Works and is now a Project Manager for the Library.



A-B: Cross-channel path replacing disused bridge to be removed  
A&B: Connections to Lake Merritt Channel paths  
C: Connection to Bay Trail and Channel Park  
D: Connection to Bay Trail and Embarcadero Bridge