

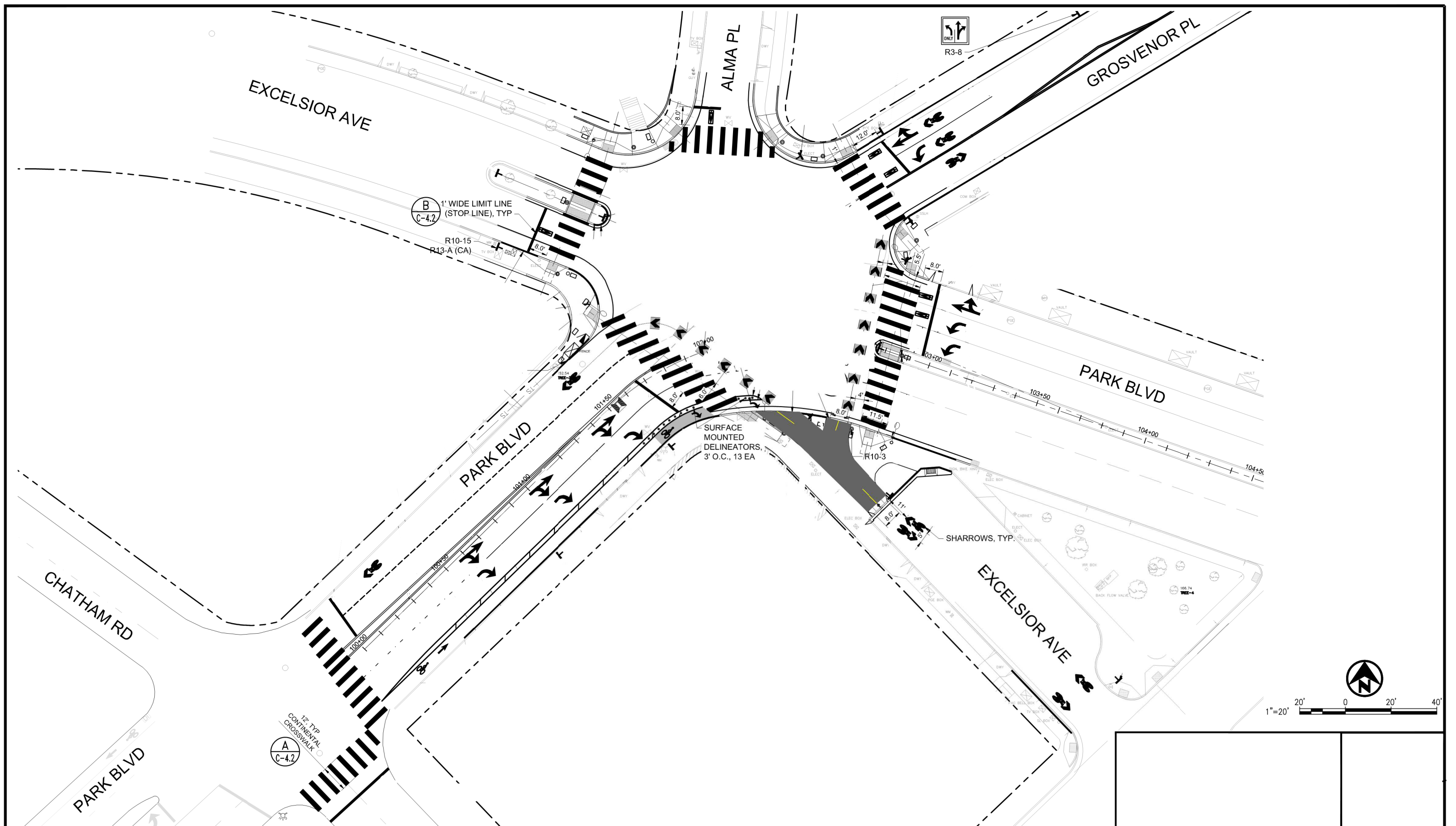


CITY OF OAKLAND

DEPARTMENT OF TRANSPORTATION-SAFE STREETS SECTION
TRAFFIC SAFETY PROGRAM
250 FRANK H. OGAWA PLAZA, SUITE 4344 * OAKLAND CA, 94612
(510) 238-3466 * FAX (510) 238-7415

PARK BOULEVARD INTERSECTION IMPROVEMENTS

PARK BLVD & EXCELSIOR
EXISTING CONDITIONS



CITY OF OAKLAND

DEPARTMENT OF TRANSPORTATION-SAFE STREETS SECTION
 TRAFFIC SAFETY PROGRAM
 250 FRANK H. OGAWA PLAZA, SUITE 4344 * OAKLAND CA, 94612
 (510) 238-3466 * FAX (510) 238-7415

**PARK BOULEVARD INTERSECTION
 IMPROVEMENTS**

**PARK BLVD & EXCELSIOR
 CONCEPTUAL PLAN**

GROSVENOR APPROACH



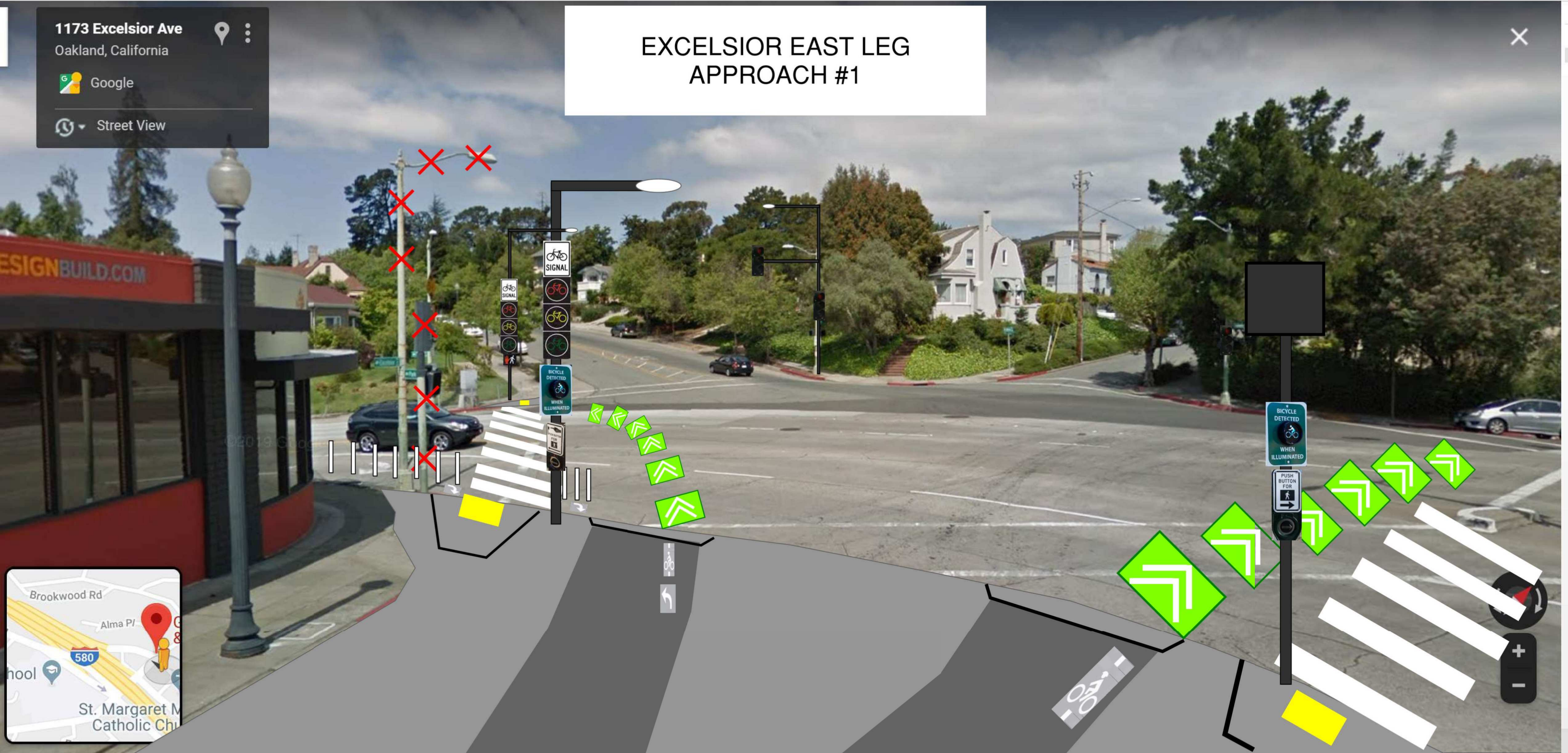
1173 Excelsior Ave

Oakland, California



Street View

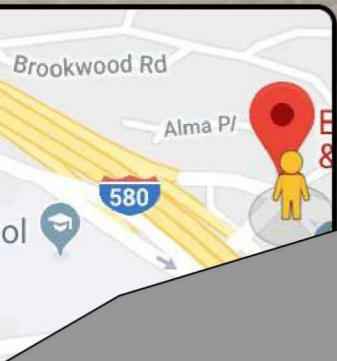
EXCELSIOR EAST LEG APPROACH #1



Google

Street View

EXCELSIOR EAST LEG APPROACH #2



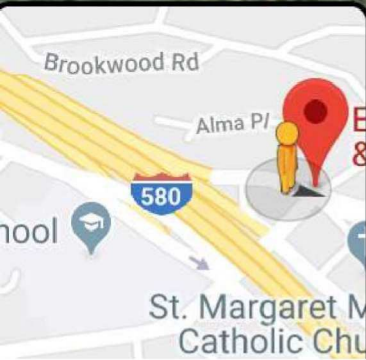
1142 Excelsior Ave

Oakland, California



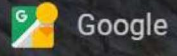
Street View

EXCELSIOR WEST LEG APPROACH



Google

Oakland, California

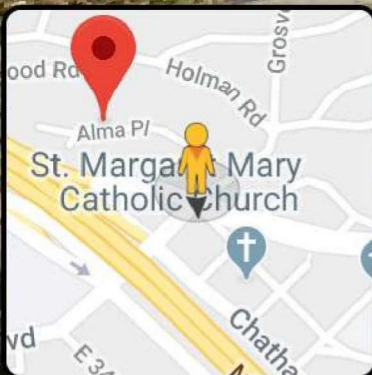


Google

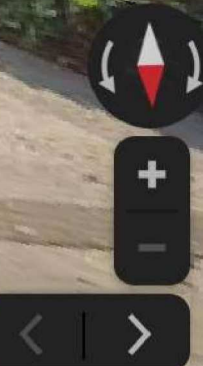


Street View

ALMA APPROACH



Google



PARK BLVD UPHILL APPROACH

3651 Park Blvd
Oakland, California

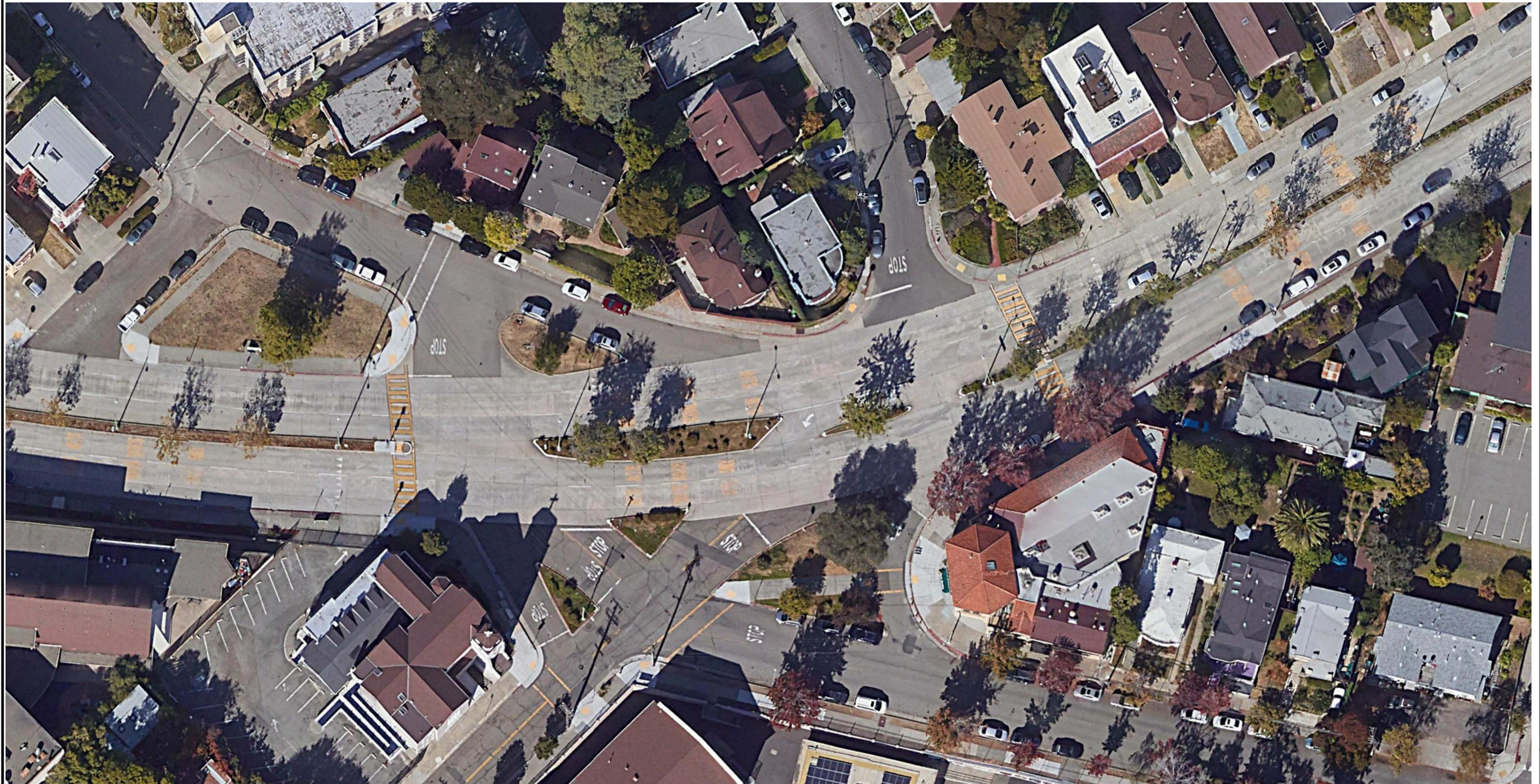
Google

Street View



A small inset window showing a yellow pegman icon on a circular base, representing the Street View camera's position. Below it are navigation controls including a square icon, a compass, and zoom in (+) and zoom out (-) buttons.

A set of navigation controls including a compass, zoom in (+) and zoom out (-) buttons, and a Street View pegman icon.

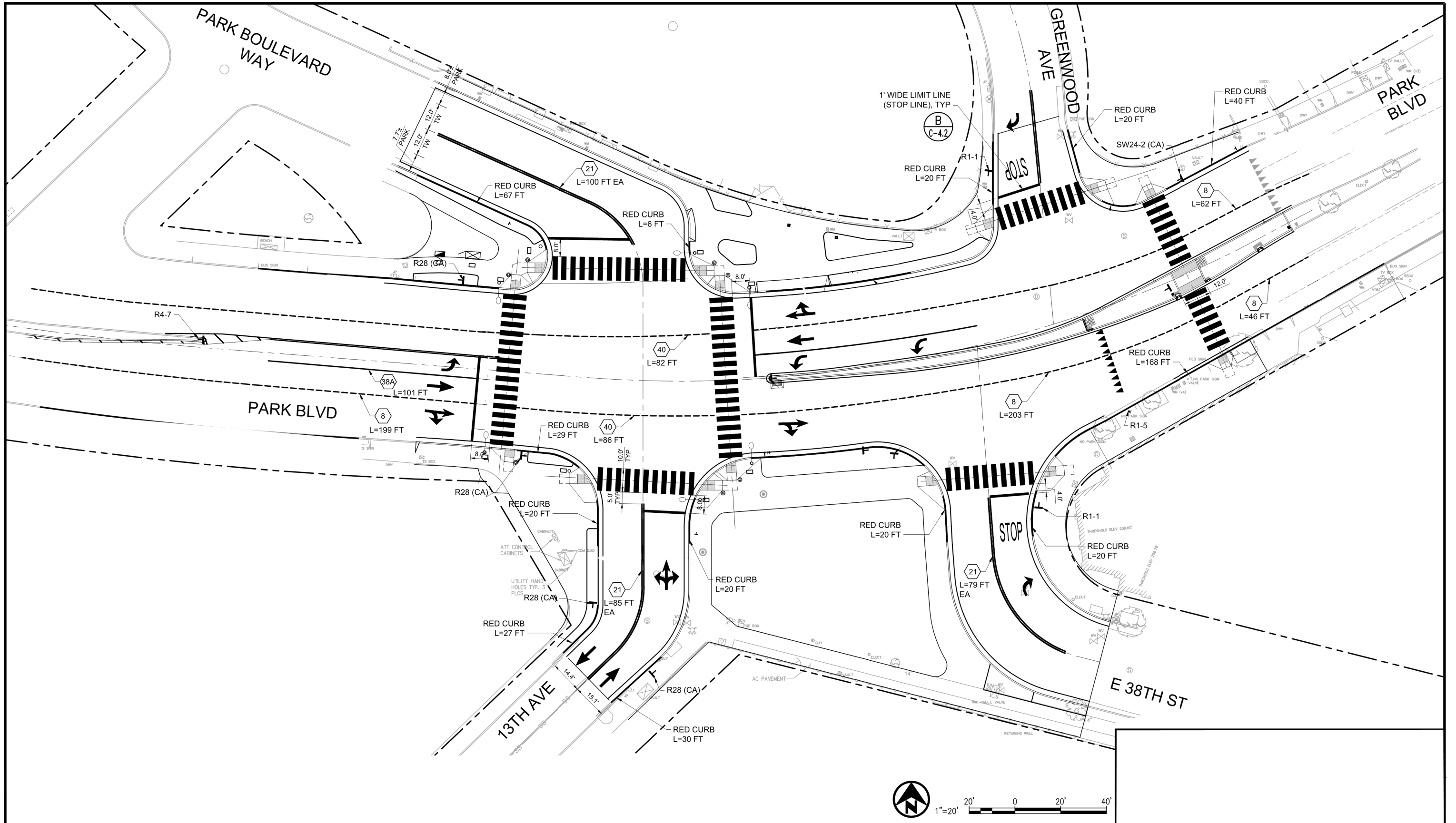


CITY OF OAKLAND

DEPARTMENT OF TRANSPORTATION-SAFE STREETS SECTION
TRAFFIC SAFETY PROGRAM
250 FRANK H. OGAWA PLAZA, SUITE 4344 * OAKLAND CA, 94612
(510) 238-3466 * FAX (510) 238-7415

**PARK BOULEVARD INTERSECTION
IMPROVEMENTS**

**PARK BLVD & 13TH AVE/E 38TH
EXISTING CONDITIONS**



CITY OF OAKLAND

DEPARTMENT OF TRANSPORTATION-SAFE STREETS SECTION
 TRAFFIC SAFETY PROGRAM
 250 FRANK H. OGAWA PLAZA, SUITE 4344 * OAKLAND CA, 94612
 (510) 238-3466 * FAX (510) 238-7415

**PARK BOULEVARD INTERSECTION
 IMPROVEMENTS**

**PARK BLVD & 13TH AVE/E 38TH
 CONCEPTUAL PLAN**