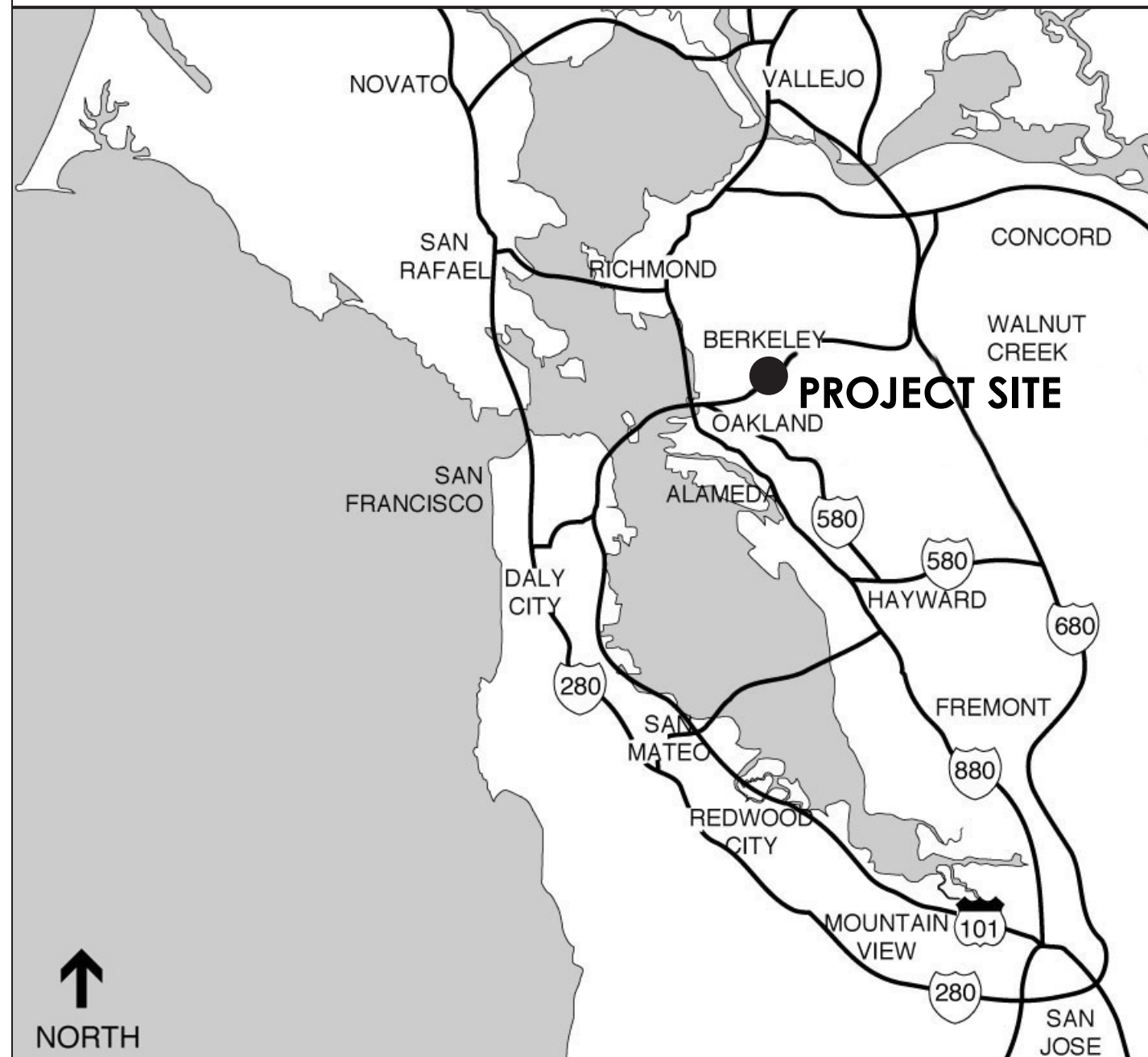


CLAREMONT CLUB, SPA & RESIDENCES

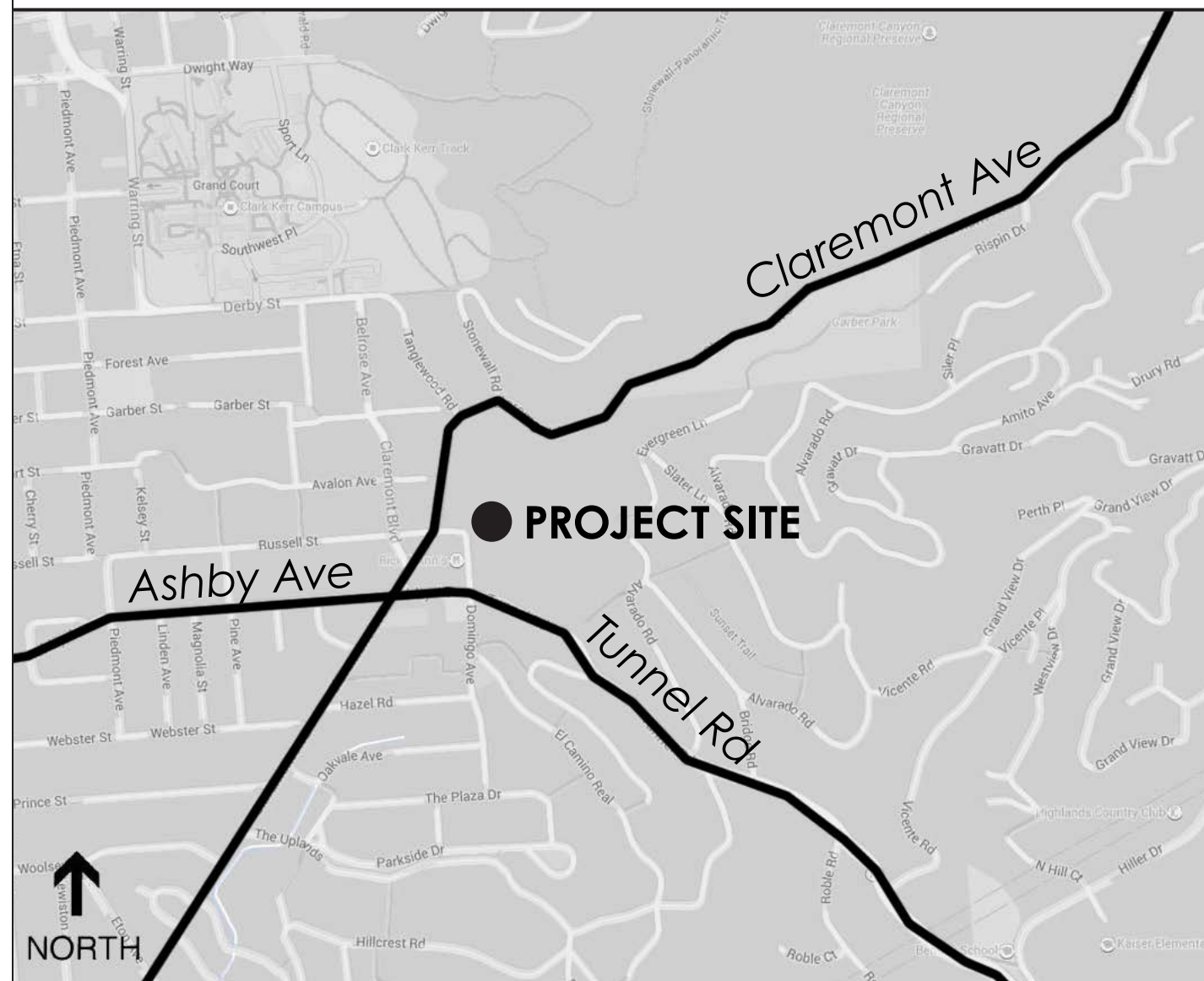
A FAIRMONT HOTEL

LANDMARKS SUBMITTAL

LOCATION MAP



VICINITY MAP



PROJECT DIRECTORY

OWNER

Claremont Hotel Properties, LP
41 Tunnel Road
Oakland, CA 94705

DEVELOPER

Signature Development Group
2335 Broadway, Suite 200
Oakland, CA 94612
(510) 251 9270
Contact: Jamie Choy
jchoy@signaturedevelopment.com

MASTER PLANNER

Hart Howerton
One Union Street
San Francisco, CA 94111
(415) 439 2200
Contact: Eron Ashley
eashley@harthowerton.com

ARCHITECT

Levy Design Partners
90 South Park Street
San Francisco, CA 94107
(415) 777 0561
Contact: Toby Levy
toby@levydesignpartners.com

ARCHITECT

Hart Howerton
One Union Street
San Francisco, CA 94111
(415) 439 2200
Contact: Eron Ashley
eashley@harthowerton.com

LANDSCAPE ARCHITECT

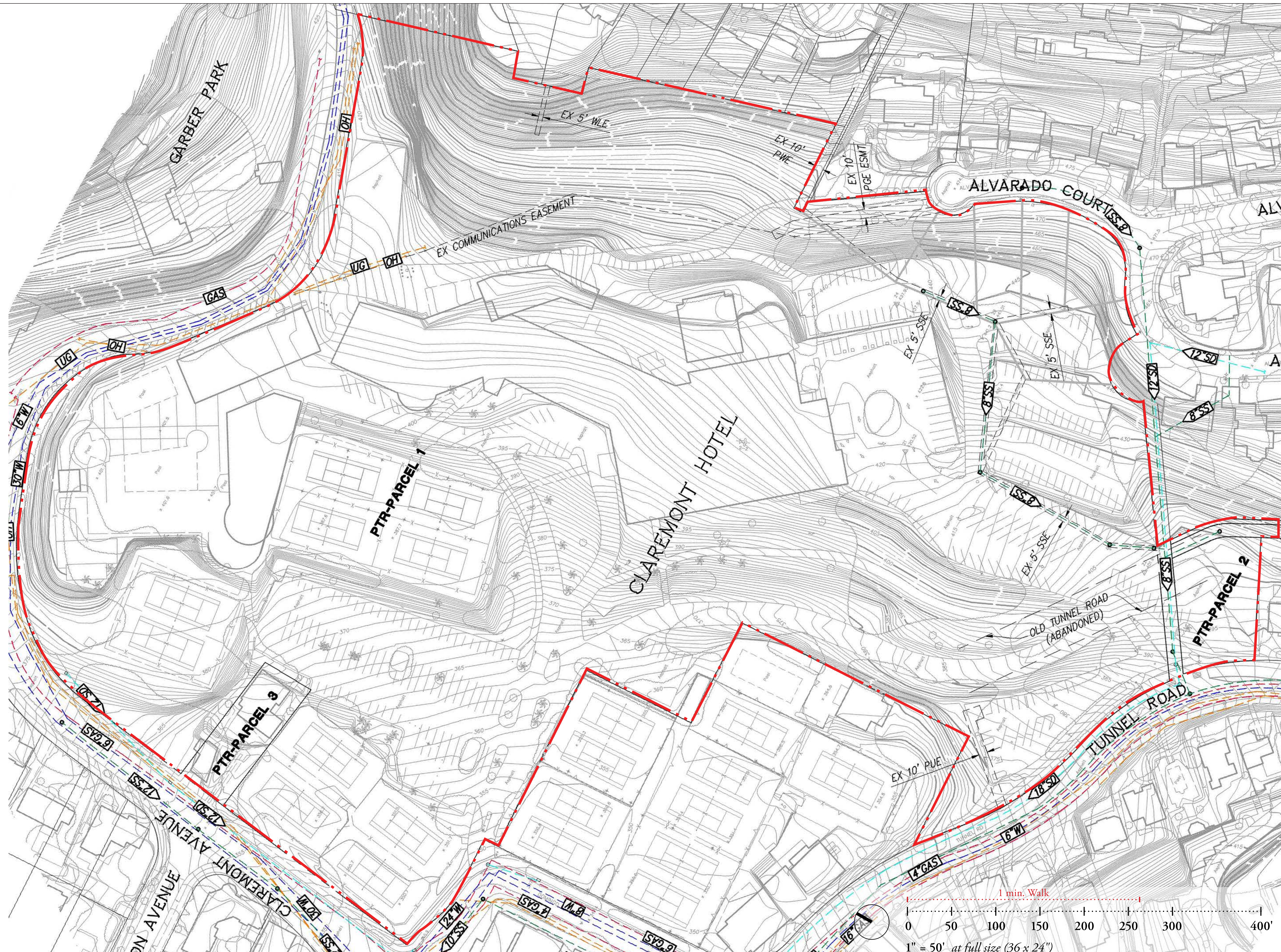
Hart Howerton
One Union Street
San Francisco, CA 94111
(415) 439 2200
Contact: Eron Ashley
eashley@harthowerton.com

CIVIL ENGINEER

Ruggeri-Jenson-Azar
4690 Chabot Drive, Suite 200
Pleasanton, CA 94588
(925) 227 9100
Contact: Mark Falgout
mfalgout@rja-gps.com

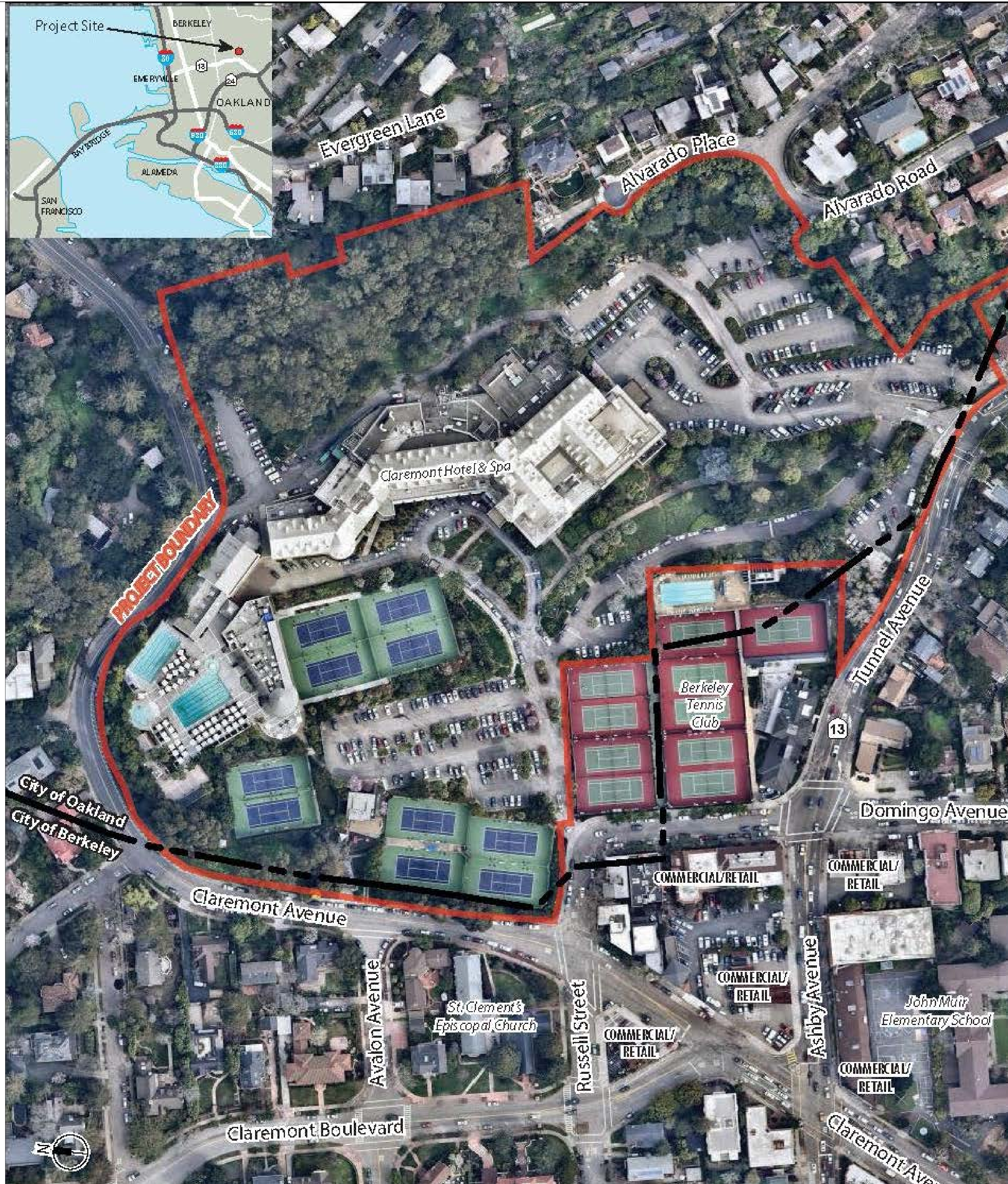
SHEET INDEX

		Landmarks Submission 6/13/16
GENERAL, SITE & LANDSCAPE		
G001	Cover Sheet	X
G002	Site Plan - Existing Conditions	X
G003	Neighborhood Plan	X
G004	Existing Site Photos	X
G005	Site Plan - Proposed	X
G006	Pedestrian Circulation & Access Plan	X
G007	Proposed Aerial Rendering	X
RESIDENTIAL BUILDINGS		
AR001	Residential - Site Photos	X
AR002	Residential - Inspiration Images Imagery	X
AR003	Residential - Floor Plans	X
AR004	Residential - Building Section	X
AR005	Residential - Site Section	X
AR006	Residential - Rendering	X
HOTEL		
AH001	Hotel - Porte Cochere Rendering	X



CLAREMONT CLUB, SPA & RESIDENCES

A FAIRMONT HOTEL | Oakland, CA



**CLAREMONT CLUB,
SPA & RESIDENCES**
A FAIRMONT HOTEL Oakland, CA











LEGEND

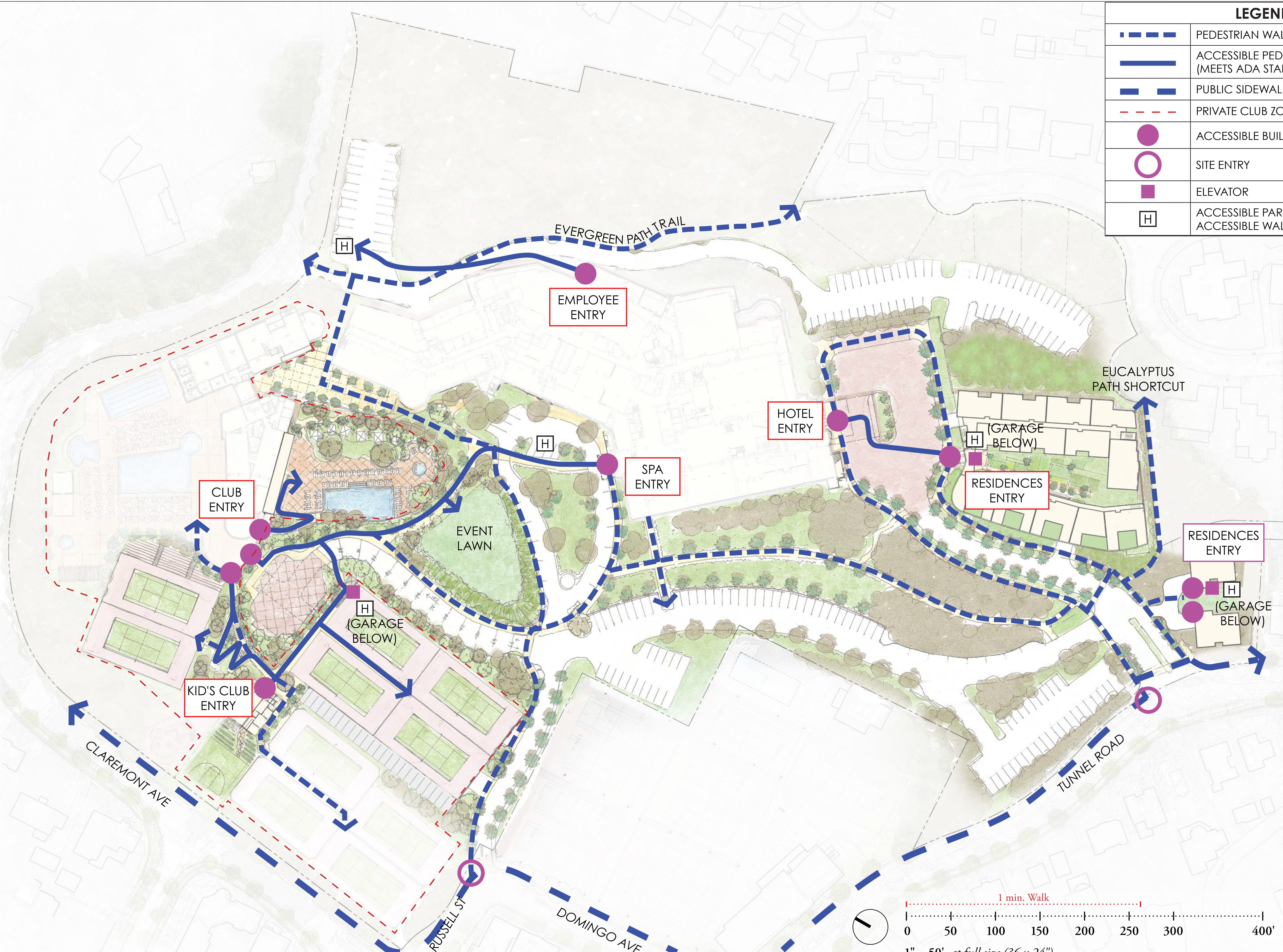
- 1 Updated Paving
- 2 Proposed Club Expansion
- 3 Proposed Adult Pool Deck
- 4 Proposed Event Lawn
- 5 Proposed Arrival Driveway to Club w/ Parallel Parking on One Side
- 6 Proposed Club Entry
- 7 Expanded Tennis Courts
- 8 Proposed 100 Bleacher Seats
- 9 Relocated Tennis over Surface Parking
- 10 Proposed Kid's Club Building & Tennis Center
- 11 Proposed Basketball Half-court w/ Lights
- 12 Updated Club Entry Road & New Sidewalks
- 13 Existing Club Parking
- 14 Updated Hotel Self-Parking
- 15 Proposed Retaining Wall to Expand Parking
- 16 Updated Hotel/ Residential Entry Road
- 17 Updated Arrival/ Porte Cochere
- 18 Proposed 43 Residential Condos w/ Subterranean Parking for Resident & Hotel Use
- 19 Proposed 2 Single Family Residences
- 20 Updated Employee Parking
- 21 Updated Fire/ Service Lane



CLAREMONT CLUB, SPA & RESIDENCES

A FAIRMONT HOTEL *Oakland, CA*

LEGEND	
	PEDESTRIAN WALKWAY
	ACCESSIBLE PEDESTRIAN WALKWAY (MEETS ADA STANDARD)
	PUBLIC SIDEWALK IN R.O.W.
	PRIVATE CLUB ZONE
	ACCESSIBLE BUILDING ENTRY
	SITE ENTRY
	ELEVATOR
	ACCESSIBLE PARKING CONNECTED TO ACCESSIBLE WALKWAY







① SITE: AERIAL VIEW



② SITE: ENTRYWAY FROM TUNNEL ROAD



③ SITE



④ SITE: EVERGREEN PATH



⑤ CLAREMONT HOTEL PARKING LOT



⑥ SLOPE OF SITE

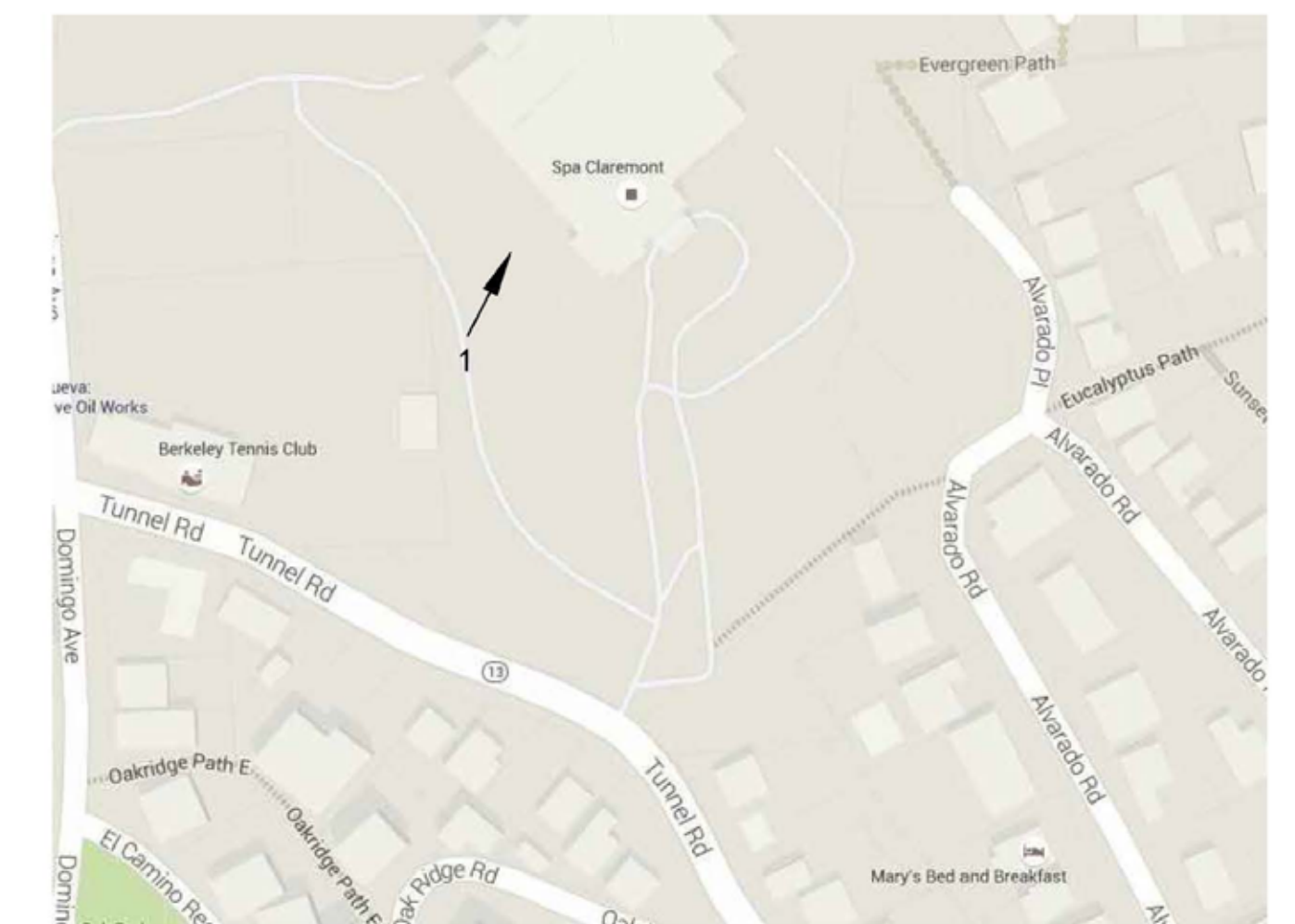


SITE MAP

1 EXISTING SITE PHOTOS



① CLAREMONT HOTEL



SITE MAP

2 NEIGHBORING BUILDING PHOTOS





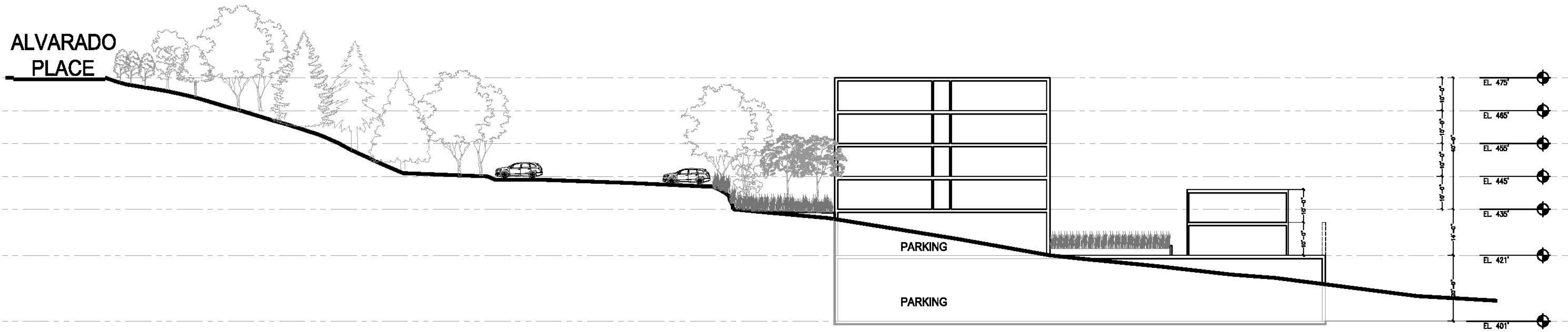
Image Source: Gensler

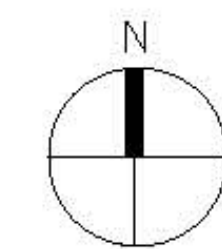
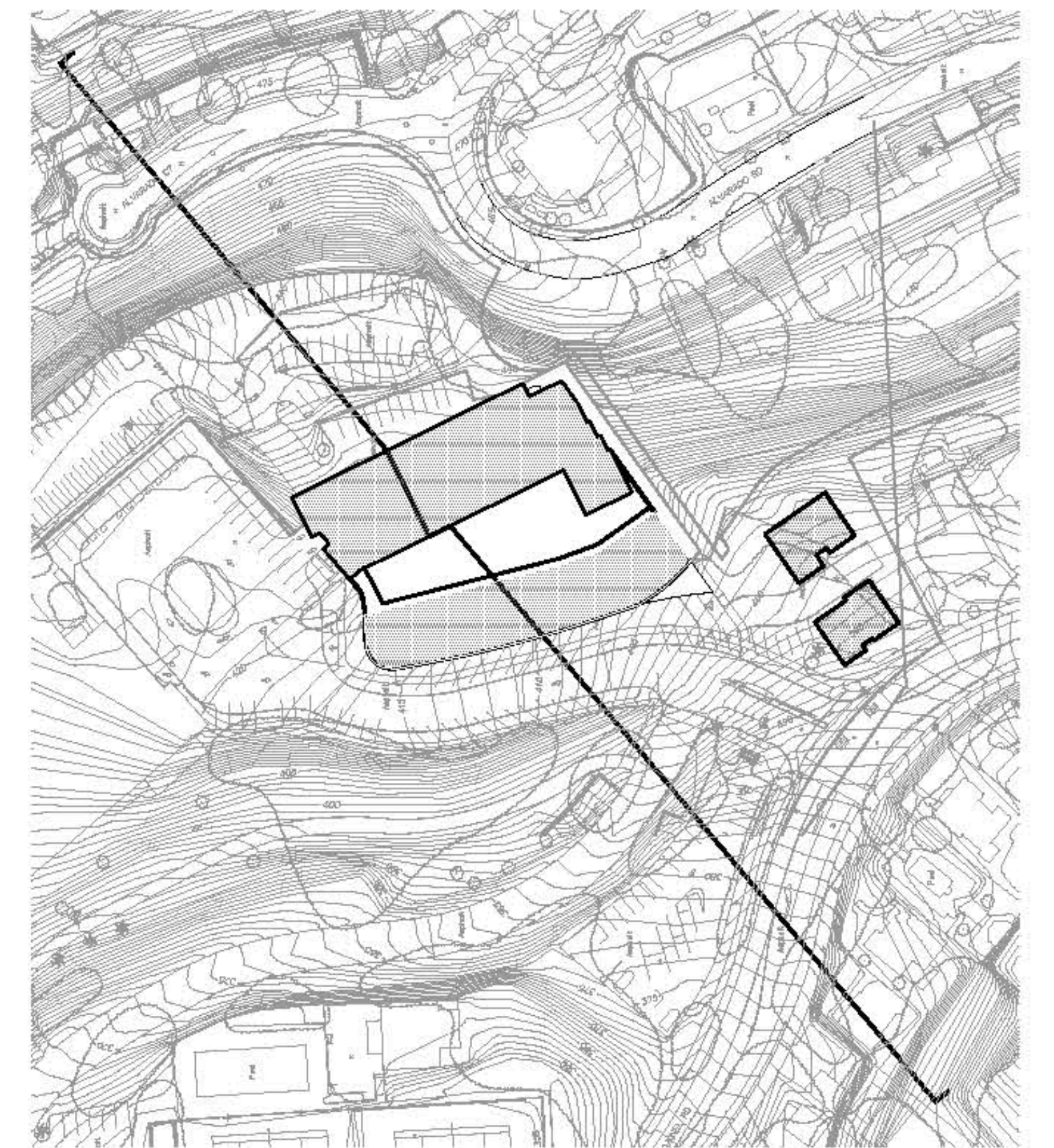


SECOND FLOOR PLAN

Unit Breakdown Summary:		
Residential Units		
# of Units	Type	SF (Net)
3	1BR	900/1175
12	2BR	1150/1400
28	3BR	1340/1880
2	3BR(SINGLE FAMILY)	3650/3820
45	Total Units	65925

ALVARADO
PLACE







CLAREMONT CLUB,
SPA & RESIDENCES
A FAIRMONT HOTEL Oakland, CA