

27th Street and Lakeside Streets Projects

**City of Oakland
Department of Transportation**

3/25/2024

NC 8X - Ujima

Colin Piethe

Suty Komsonkeo



27th and Lakeside Streets Projects

Improving bicycle and pedestrian safety North of Lake Merritt



City of
Oakland

Department of
Transportation

About the Project

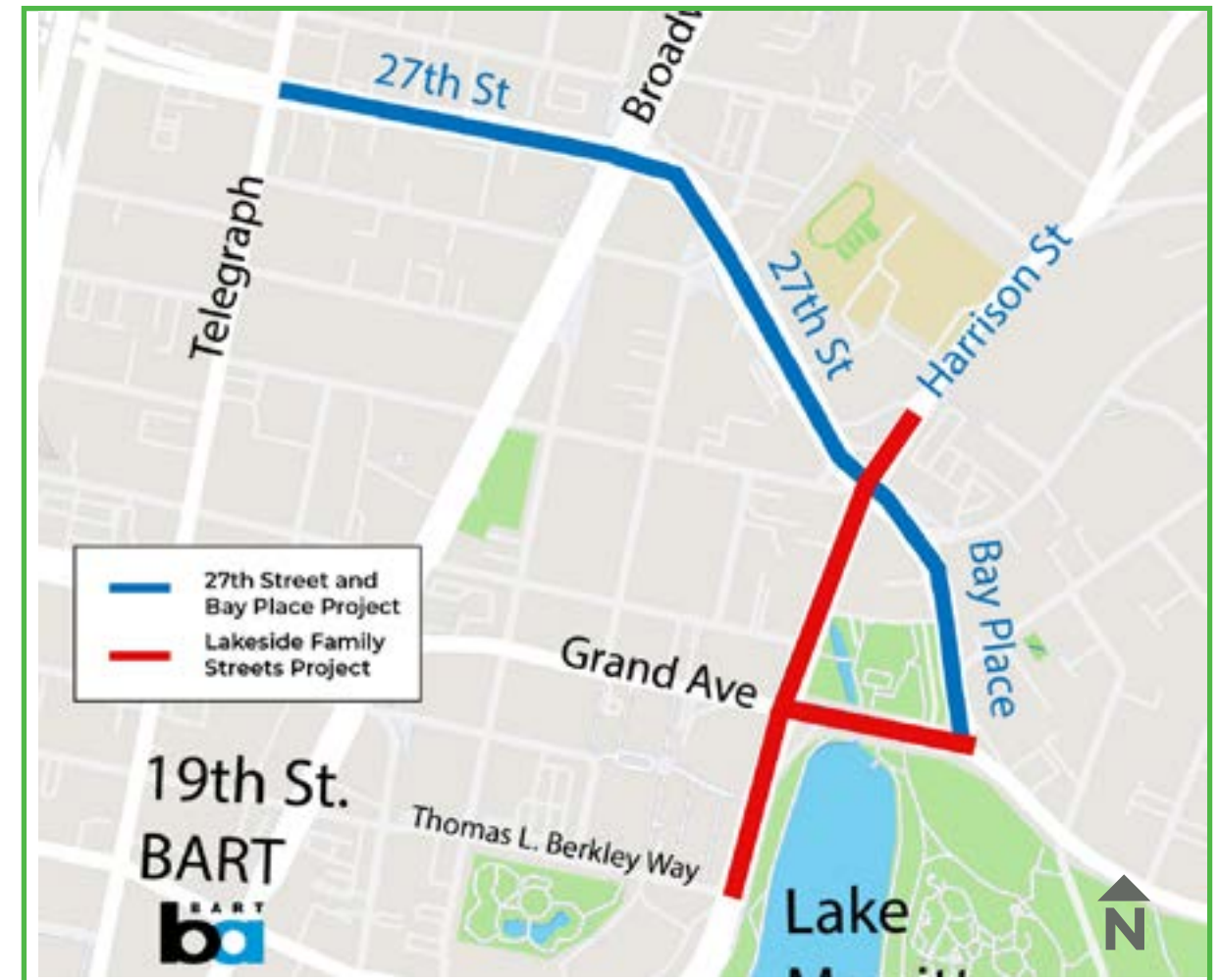
Oakland residents and visitors use 27th Street, Bay Place, Harrison Street, and Grand Avenue to travel to Lake Merritt, grocery stores, places of worship, and more. Residents here commute by biking, walking, and public transit more often than other Oaklanders. 15% of residents walk or bike to work and 34% take transit.

Grand Avenue and 27th Street are part of the City's High Injury Network (the 6% of Oakland's streets where 63% of severe and fatal collisions occur). There have been 87 collisions within the project area since 2012, including one pedestrian death. People walking and biking make up the majority of all people harmed by crashes within the project area (20.7% and 40% respectively).

This project was developed from community feedback and recommendations made in the 2014 Broadway Valdez District Specific Plan, the 2019 "Let's Bike Oakland!" Bike Plan.

The project includes:

- **Separated bike lanes on 27th Street**
- **Buffered bike lanes on Bay Place**
- **Two-way cycle track on Grand Avenue from Bay Place to Harrison Street**
- **Simplified driving lanes and shorter crossing distances** at the intersection of Grand Ave and Bay Place, at Grand Ave and Harrison Street, and at 27th Street and Harrison Street
- **Planted medians along 27th Street and Bay Place**



Project Goals

- Improve safety, comfort, and visibility for people bicycling and walking on Lakeside streets
- Reduce turning conflicts between road users
- Make intersections easier to navigate for all users

27th and Lakeside Streets Projects

Improving bicycle and pedestrian safety North of Lake Merritt



City of
Oakland

Department of
Transportation

EXISTING CONDITIONS

27th Street, 24th Street, Harrison Street, and Bay Place



- Crosswalks are faded and are not very visible to drivers
- Limited commercial loading zones, despite heavy commercial activity
- Double parking is prominent

Grand Avenue and Bay Place



- Large and confusing intersections are dangerous
- Unprotected bicycle facilities make biking and scootering less safe and inaccessible for most Oaklanders

27th and Lakeside Streets Projects

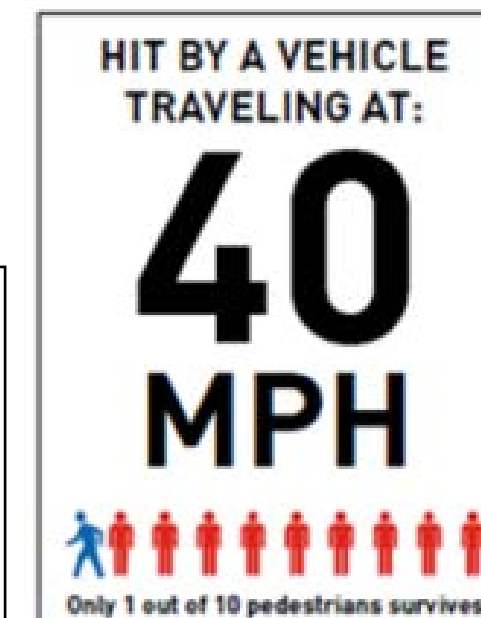
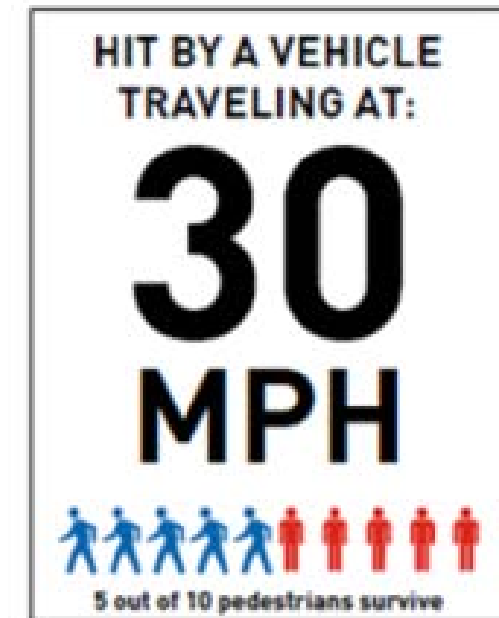
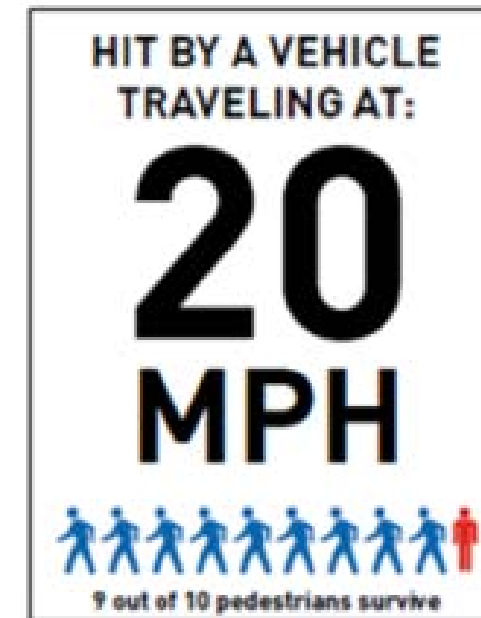
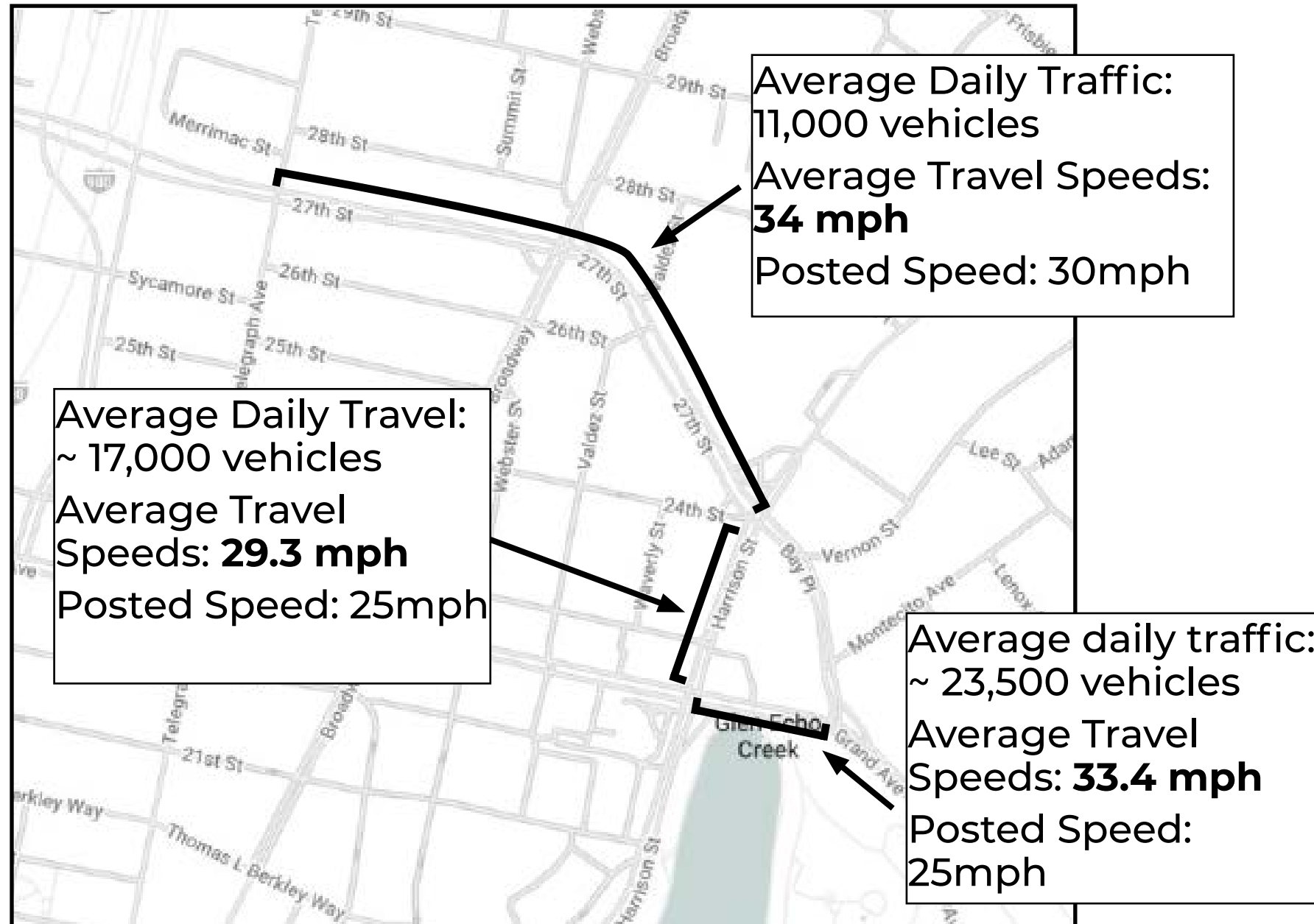
Improving bicycle and pedestrian safety North of Lake Merritt



City of
Oakland

Department of
Transportation

TRAFFIC SPEED AND FLOW



Speed is especially lethal for vulnerable users like **pedestrians and people biking**. The risk of injury and death increases as speed increases.

Source: <http://oakgis.maps.arcgis.com/home/webmap/viewer.html?webmap=86ceba0ee7f4427cba0613c9b7e114d0>

Contact: Colin Piethe - cpiethe@oaklandca.gov • Website: <https://www.oaklandca.gov/projects/lakeside-family-streets>

27th and Lakeside Streets Projects

Improving bicycle and pedestrian safety North of Lake Merritt



City of
Oakland

Department of
Transportation

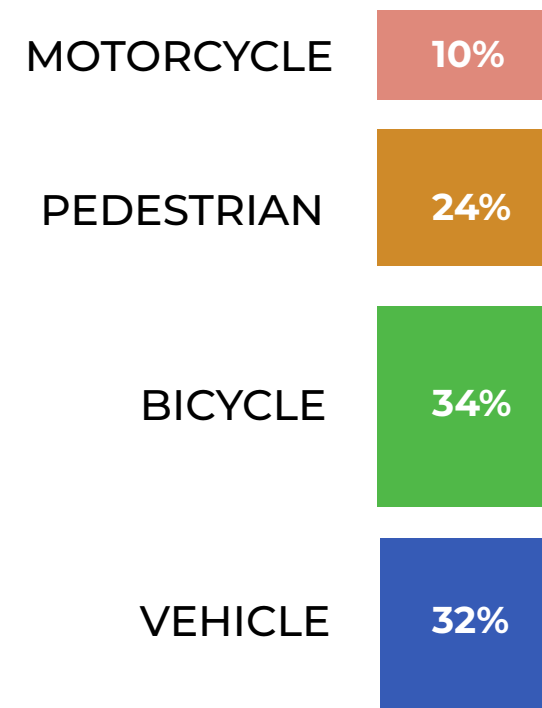
TRAFFIC SAFETY

- » Between 2010 and 2021 there were 87 collisions in the project area, including one fatal collision at Grand Ave and Bellevue Ave in 2012 involving a pedestrian
- » People biking and walking are disproportionately harmed in collisions compared to their share of traffic; 15% of residents walk and bike to work, yet account for 58% of collisions
- » Improper turning is the most common cause of collisions on 27th St, Bay Pl, Grand Ave, and Harrison St including the most severe collisions

TRAFFIC COLLISIONS ON LAKESIDE STREETS



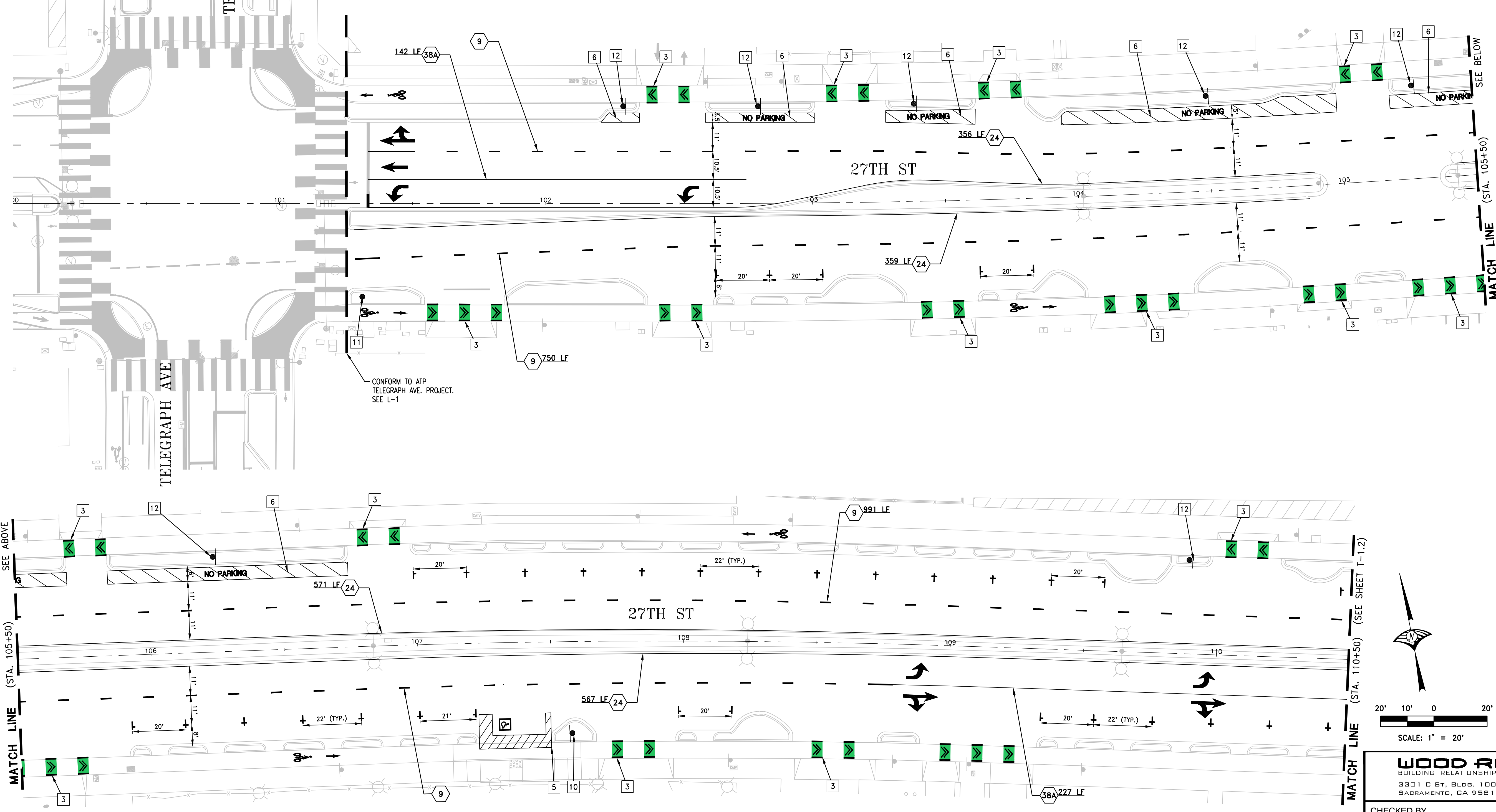
PARTIES INVOLVED



TOP CAUSES OF COLLISIONS:

- #1: IMPROPER TURNING (22%)
- #2: AUTOMOBILE RIGHT OF WAY (20%)
- #3: PEDESTRIAN RIGHT OF WAY (15%)
- #4: TRAFFIC SIGNALS AND SIGNS (13%)
- #5: UNSAFE SPEED (9%)

- LEGEND:**
- BIKE LANE SYMBOL AND ARROW, PER CITY OF OAKLAND STANDARD DETAIL RM-1
 - PARKING STALL "TEE" PER CITY OF OAKLAND STANDARD DETAIL RM-11
 - ARROW TYPE IV (L/R) PER CALTRANS STANDARD PLAN A24A
 - "STOP" PAVEMENT MARKINGS PER CALTRANS STANDARD PLAN A24D AND A24E
 - GREEN PAVEMENT MARKING
 - GREEN BIKE LANE INTERSECTION MARKING PER CITY OF OAKLAND STANDARD DETAIL RM-9
 - TRAFFIC STRIPE DETAIL NO. PER CALTRANS STANDARD PLANS
 - CYCLE TRACK LANE STRIPE PER DETAIL ON THIS SHEET
 - ARROW TYPE VII (L/R) PER CALTRANS STANDARD PLAN A24A
 - ISA MARKING PER CALTRANS STANDARD PLAN A90A
 - ARROW TYPE I (10') PER CALTRANS STANDARD PLAN A24A



- CONSTRUCTION NOTES:**
- 1 INSTALL WHITE CONTINENTAL CROSSWALK PER CITY OF OAKLAND STANDARD DETAIL RM-4 AND RM-4A
 - 2 INSTALL 1' WIDE WHITE THERMOPLASTIC STRIPING 8' FROM CROSSWALK UNLESS OTHERWISE NOTED
 - 3 INSTALL BIKE LANE INTERSECTION MARKING DETAIL PER CITY OF OAKLAND DETAIL GB-4. SPACE MARKINGS PER DETAILS UNLESS OTHERWISE SHOWN.
 - 4 INSTALL ACCESSIBLE DIAGONAL PARKING STALL PER CALTRANS STANDARD PLAN A90B
 - 5 INSTALL ACCESSIBLE PARALLEL PARKING STALL PER CALTRANS STANDARD PLAN A90B
 - 6 INSTALL 6" WHITE STRIPE EVERY 5' O.C. AT 45 DEGREES.
 - 7 PAINT CURB YELLOW
 - 8 PAINT CURB BLUE
 - 9 INSTALL BIKE BOX PER CITY OF OAKLAND STANDARD DETAIL RM-8 AND RM-8A
 - 10 INSTALL CA MUTCD R99C (CA) SIGN
 - 11 INSTALL CA MUTCD R81 (CA) SIGN
 - 12 INSTALL CA MUTCD R7-1 SIGN

CAUTION: THIS PLAN MAY BE REDUCED

CITY OF OAKLAND
 DEPARTMENT OF TRANSPORTATION
 250 FRANK H. OGAWA PLAZA, SUITE 4314
 OAKLAND, CA 94612
 (510) 238-3437
 FAX (510) 238-7227

**PLANS FOR THE CONSTRUCTION OF
 27TH STREET COMPLETE STREETS PROJECT**

No.	DATE	BY	REFERENCE

WOOD RODGERS
 BUILDING RELATIONSHIPS ONE PROJECT AT A TIME
 3301 C ST, BLDG. 100-B TEL 916.341.7760
 SACRAMENTO, CA 95816 FAX 916.341.7767

CHECKED BY S. ROBINSON
 DESIGNED BY T. ROPER
 DRAWN BY T. ROPER

CONSTRUCTION PLANS:
 SIGNAGE AND STRIPING PLAN

C1003978

SCALE: 1"=20'
 HOR: 1"=20'
 VERT: 1"=20'
 DATE: 06/2023

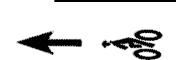






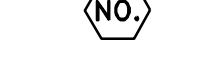



SHEET NO.
T-1.1
 55 OF 68

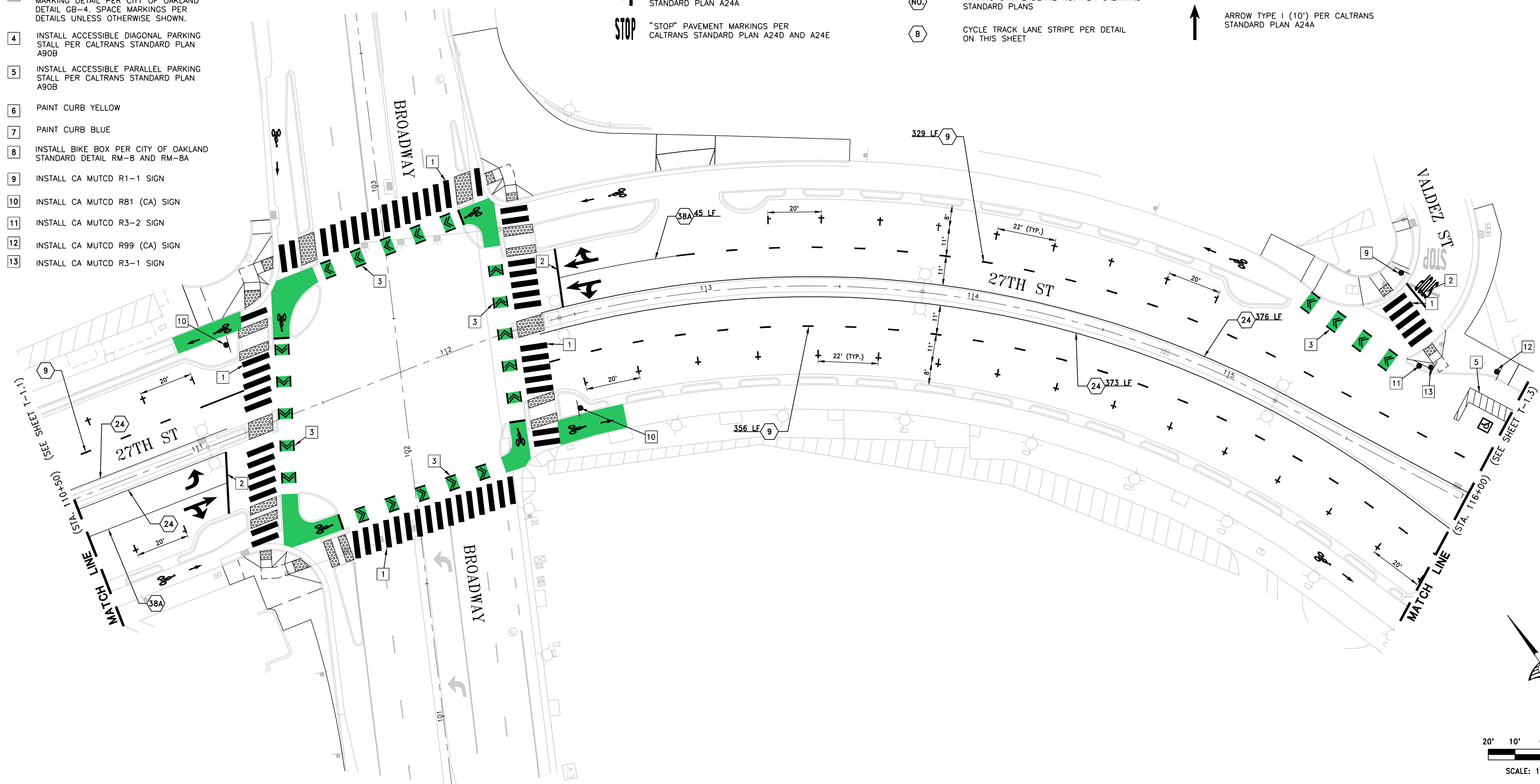
DRAWING NAME: J:\Jobs\8785 Oakland Transportation On-Call\10 27th Street\Draw\02_Sheets\C_55-STPR01-27th.dwg
 PLOT DATE: 06-28-24
 PLOTTED BY: troper

CONSTRUCTION NOTES:

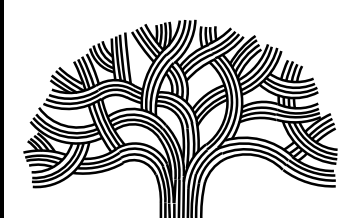
- 1 INSTALL WHITE CONTINENTAL CROSSWALK PER CITY OF OAKLAND STANDARD DETAIL RM-4 AND RM-4A
- 2 INSTALL 1' WIDE WHITE THERMOPLASTIC STRIPING 8' FROM CROSSWALK UNLESS OTHERWISE NOTED
- 3 INSTALL BIKE LANE INTERSECTION MARKING DETAIL PER CITY OF OAKLAND DETAIL GB-4. SPACE MARKINGS PER DETAILS UNLESS OTHERWISE SHOWN.
- 4 INSTALL ACCESSIBLE DIAGONAL PARKING STALL PER CALTRANS STANDARD PLAN A90B
- 5 INSTALL ACCESSIBLE PARALLEL PARKING STALL PER CALTRANS STANDARD PLAN A90B
- 6 PAINT CURB YELLOW
- 7 PAINT CURB BLUE
- 8 INSTALL BIKE BOX PER CITY OF OAKLAND STANDARD DETAIL RM-8 AND RM-8A
- 9 INSTALL CA MUTCD R1-1 SIGN
- 10 INSTALL CA MUTCD R81 (CA) SIGN
- 11 INSTALL CA MUTCD R3-2 SIGN
- 12 INSTALL CA MUTCD R99 (CA) SIGN
- 13 INSTALL CA MUTCD R3-1 SIGN

LEGEND:

-  BIKE LANE SYMBOL AND ARROW, PER CITY OF OAKLAND STANDARD DETAIL RM-1
-  PARKING STALL "TEE" PER CITY OF OAKLAND STANDARD DETAIL RM-11
-  ARROW TYPE IV (L/R) PER CALTRANS STANDARD PLAN A24A
-  "STOP" PAVEMENT MARKINGS PER CALTRANS STANDARD PLAN A24D AND A24E
-  GREEN PAVEMENT MARKING
-  GREEN BIKE LANE INTERSECTION MARKING PER CITY OF OAKLAND STANDARD DETAIL RM-9
-  TRAFFIC STRIPE DETAIL NO. PER CALTRANS STANDARD PLANS
-  CYCLE TRACK LANE STRIPE PER DETAIL ON THIS SHEET
-  ARROW TYPE VII (L/R) PER CALTRANS STANDARD PLAN A24A
-  ISA MARKING PER CALTRANS STANDARD PLAN A90A
-  ARROW TYPE I (10') PER CALTRANS STANDARD PLAN A24A



CAUTION: THIS PLAN MAY BE REDUCED



CITY OF OAKLAND
 DEPARTMENT OF TRANSPORTATION
 250 FRANK H. OGAWA PLAZA, SUITE 4314
 OAKLAND, CA 94612
 (510) 238-3437
 FAX (510) 238-7227

**PLANS FOR THE CONSTRUCTION OF
 27TH STREET COMPLETE STREETS PROJECT**

No.	DATE	BY	REFERENCE

WOOD RODGERS BUILDING RELATIONSHIPS ONE PROJECT AT A TIME 3301 C ST, BLDG. 100-B TEL 916.341.7760 SACRAMENTO, CA 95816 FAX 916.341.7767	
CHECKED BY	S. ROBINSON
DESIGNED BY	T. ROPER
DRAWN BY	T. ROPER

CONSTRUCTION PLANS:
 SIGNAGE AND STRIPING PLAN

C1003978

SCALE: 1"=20'
 HOR: 1"=20'
 VERT: 1"=20'
 DATE: 06/2023

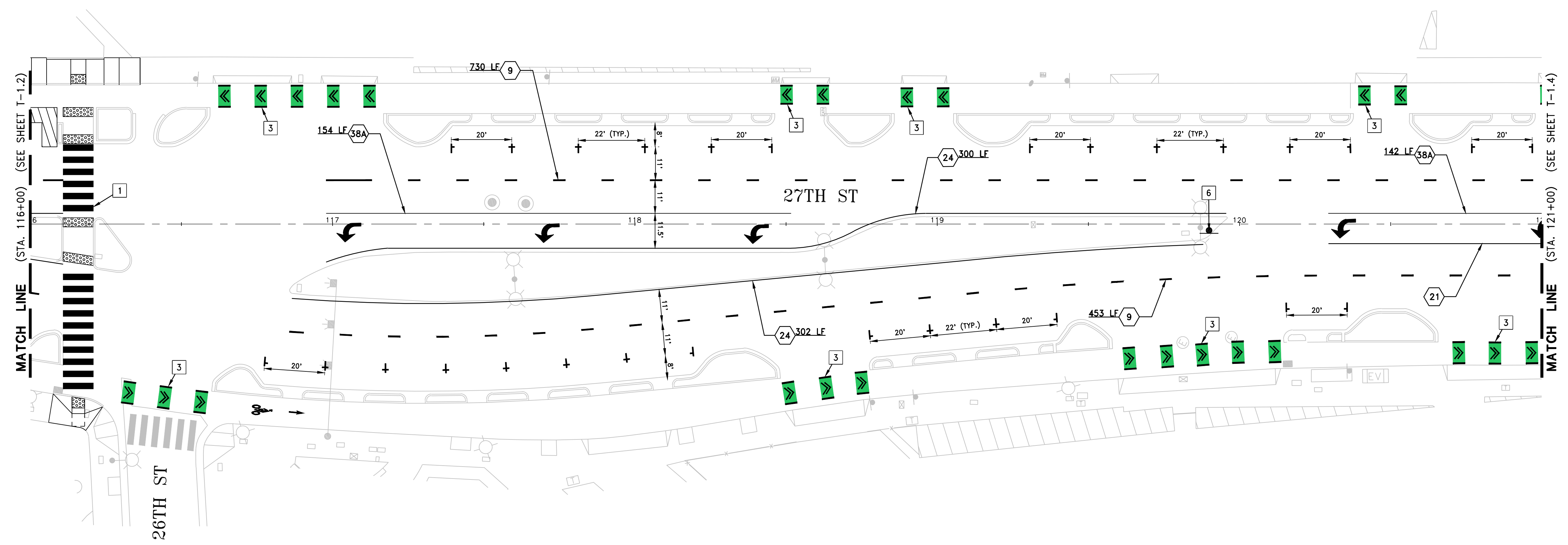
SHEET NO.
T-1.2
56 OF **68**

DRAWING NAME: J:\060818785 Oakland Transportation On-Call\T08 27th Street\Civil\Draw\02_Sheets\C_56-STRIP02-27th.dwg
 PLOT DATE: 06-27-24
 PLOTTED BY: troper

- LEGEND:**
- BIKE LANE SYMBOL AND ARROW, PER CITY OF OAKLAND STANDARD DETAIL RM-1
 - PARKING STALL "TEE" PER CITY OF OAKLAND STANDARD DETAIL RM-11
 - ARROW TYPE IV (L/R) PER CALTRANS STANDARD PLAN A24A
 - "STOP" PAVEMENT MARKINGS PER CALTRANS STANDARD PLAN A24D AND A24E

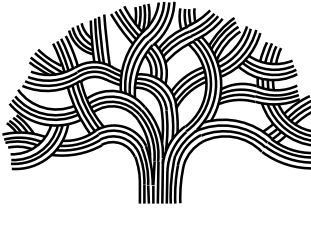
- GREEN PAVEMENT MARKING
- GREEN BIKE LANE INTERSECTION MARKING PER CITY OF OAKLAND STANDARD DETAIL RM-9
- TRAFFIC STRIPE DETAIL NO. PER CALTRANS STANDARD PLANS
- CYCLE TRACK LANE STRIPE PER DETAIL ON THIS SHEET

- ARROW TYPE VII (L/R) PER CALTRANS STANDARD PLAN A24A
- ISA MARKING PER CALTRANS STANDARD PLAN A90A
- ARROW TYPE I (10") PER CALTRANS STANDARD PLAN A24A



- CONSTRUCTION NOTES:**
- 1 INSTALL WHITE CONTINENTAL CROSSWALK PER CITY OF OAKLAND STANDARD DETAIL RM-4 AND RM-4A
 - 2 INSTALL 1' WIDE WHITE THERMOPLASTIC STRIPING 8" FROM CROSSWALK UNLESS OTHERWISE NOTED
 - 3 INSTALL BIKE LANE INTERSECTION MARKING DETAIL PER CITY OF OAKLAND DETAIL GB-4. SPACE MARKINGS PER DETAILS UNLESS OTHERWISE SHOWN.
 - 4 INSTALL ACCESSIBLE DIAGONAL PARKING STALL PER CALTRANS STANDARD PLAN A90B
 - 5 INSTALL ACCESSIBLE PARALLEL PARKING STALL PER CALTRANS STANDARD PLAN A90B
 - 6 INSTALL CA MUTCD R3-2 SIGN
 - 7 PAINT CURB YELLOW
 - 8 PAINT CURB BLUE
 - 9 INSTALL BIKE BOX PER CITY OF OAKLAND STANDARD DETAIL RM-8 AND RM-8A

CAUTION: THIS PLAN MAY BE REDUCED



CITY OF OAKLAND
 DEPARTMENT OF TRANSPORTATION
 250 FRANK H. OGAWA PLAZA, SUITE 4314
 OAKLAND, CA 94612
 (510) 238-3437
 FAX (510) 238-7227

**PLANS FOR THE CONSTRUCTION OF
 27TH STREET COMPLETE STREETS PROJECT**

No.	DATE	BY	REFERENCE

WOOD RODGERS
 BUILDING RELATIONSHIPS ONE PROJECT AT A TIME
 3301 C ST, BLDG. 100-B TEL 916.341.7760
 SACRAMENTO, CA 95816 FAX 916.341.7767

CHECKED BY: S. ROBINSON
 DESIGNED BY: T. ROPER
 DRAWN BY: T. ROPER

CONSTRUCTION PLANS:
 SIGNAGE AND STRIPING PLAN

C1003978

SCALE: 1"=20'
 HOR: 1"=20'
 VERT: 1"=20'
 DATE: 06/2023

SHEET NO.
T-1.3
 57 OF 68

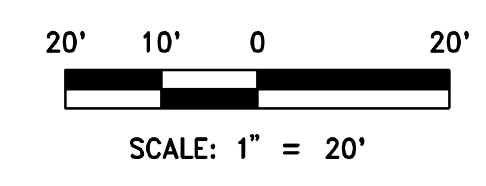
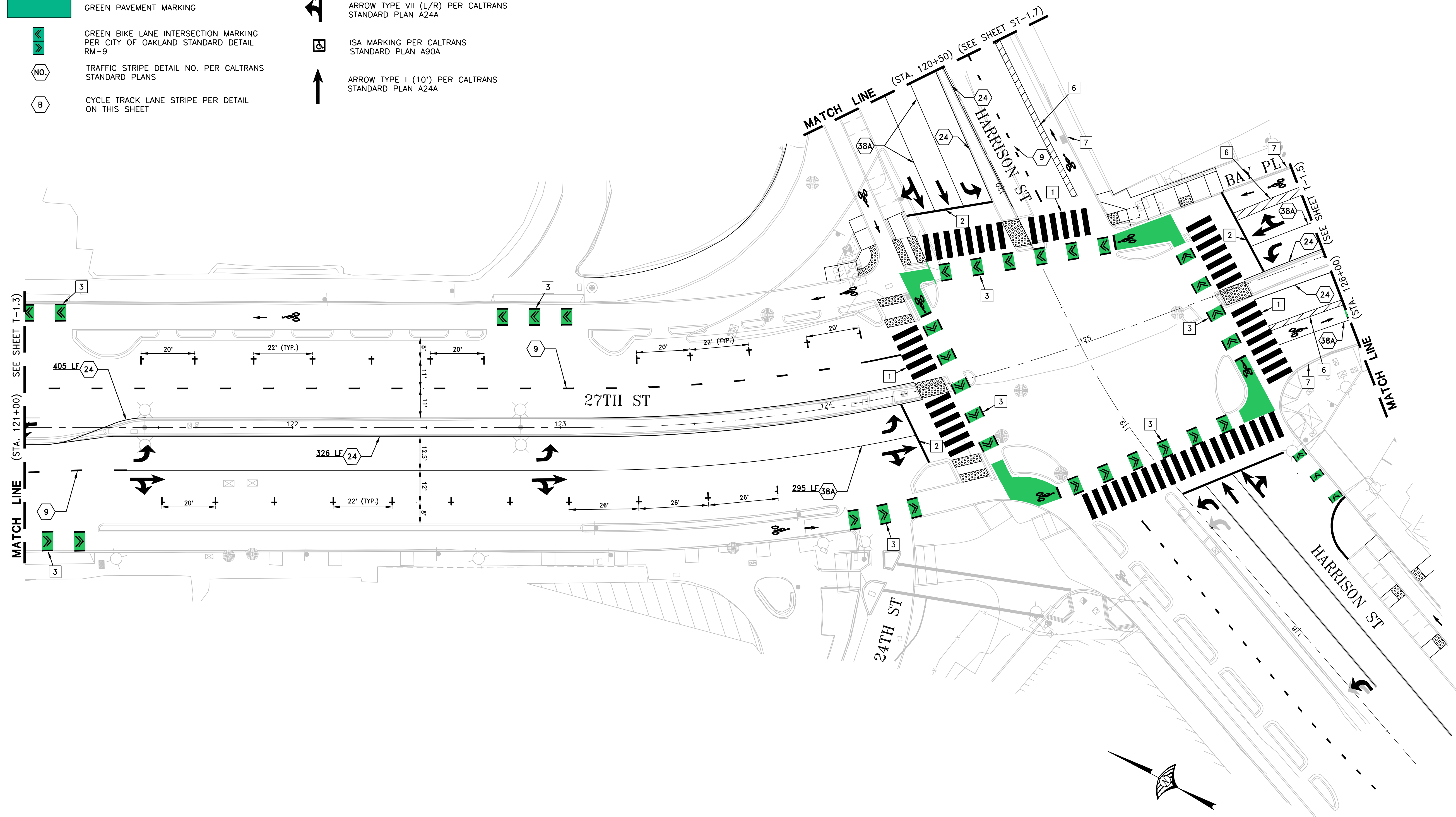
DRAWING NAME: J:\Jobs\8785 Oakland Transportation On-Call\TO 27th Street\Draw\02_Sheets\C_57-STPR03-27th.dwg
 PLOT DATE: 06-27-24
 PLOTTED BY: troper

- LEGEND:**
- BIKE LANE SYMBOL AND ARROW, PER CITY OF OAKLAND STANDARD DETAIL RM-1
 - PARKING STALL "TEE" PER CITY OF OAKLAND STANDARD DETAIL RM-11
 - ARROW TYPE IV (L/R) PER CALTRANS STANDARD PLAN A24A
 - "STOP" PAVEMENT MARKINGS PER CALTRANS STANDARD PLAN A24D AND A24E

- GREEN PAVEMENT MARKING
- GREEN BIKE LANE INTERSECTION MARKING PER CITY OF OAKLAND STANDARD DETAIL RM-9
- TRAFFIC STRIPE DETAIL NO. PER CALTRANS STANDARD PLANS
- CYCLE TRACK LANE STRIPE PER DETAIL ON THIS SHEET

- ARROW TYPE VII (L/R) PER CALTRANS STANDARD PLAN A24A
- ISA MARKING PER CALTRANS STANDARD PLAN A90A
- ARROW TYPE I (10') PER CALTRANS STANDARD PLAN A24A

- CONSTRUCTION NOTES:**
- 1 INSTALL WHITE CONTINENTAL CROSSWALK PER CITY OF OAKLAND STANDARD DETAIL RM-4 AND RM-4A
 - 2 INSTALL 1' WIDE WHITE THERMOPLASTIC STRIPING 8" FROM CROSSWALK UNLESS OTHERWISE NOTED
 - 3 INSTALL BIKE LANE INTERSECTION MARKING DETAIL PER CITY OF OAKLAND DETAIL GB-4. SPACE MARKINGS PER DETAILS UNLESS OTHERWISE SHOWN.
 - 4 INSTALL ACCESSIBLE DIAGONAL PARKING STALL PER CALTRANS STANDARD PLAN A90B
 - 5 INSTALL ACCESSIBLE PARALLEL PARKING STALL PER CALTRANS STANDARD PLAN A90B
 - 6 INSTALL 6" WHITE STRIPE EVERY 5' O.C. AT 45 DEGREES.
 - 7 PAINT CURB RED
 - 8 PAINT CURB YELLOW
 - 9 PAINT CURB BLUE
 - 10 INSTALL BIKE BOX PER CITY OF OAKLAND STANDARD DETAIL RM-8 AND RM-8A



CAUTION: THIS PLAN MAY BE REDUCED

CITY OF OAKLAND
 DEPARTMENT OF TRANSPORTATION
 250 FRANK H. OGAWA PLAZA, SUITE 4314
 OAKLAND, CA 94612
 (510) 238-3437
 FAX (510) 238-7227

**PLANS FOR THE CONSTRUCTION OF
 27TH STREET COMPLETE STREETS PROJECT**

No.	DATE	BY	REFERENCE

WOOD RODGERS
 BUILDING RELATIONSHIPS ONE PROJECT AT A TIME
 3301 C ST, BLDG. 100-B TEL 916.341.7760
 SACRAMENTO, CA 95816 FAX 916.341.7767

CHECKED BY	S. ROBINSON
DESIGNED BY	T. ROPER
DRAWN BY	T. ROPER

CONSTRUCTION PLANS:
 SIGNAGE AND STRIPING PLAN

C1003978

SCALE: 1"=20'
 HOR: 1"=20'
 VERT: 1"=20'
 DATE: 06/2023

SHEET NO.
T-1.4
58 OF **68**

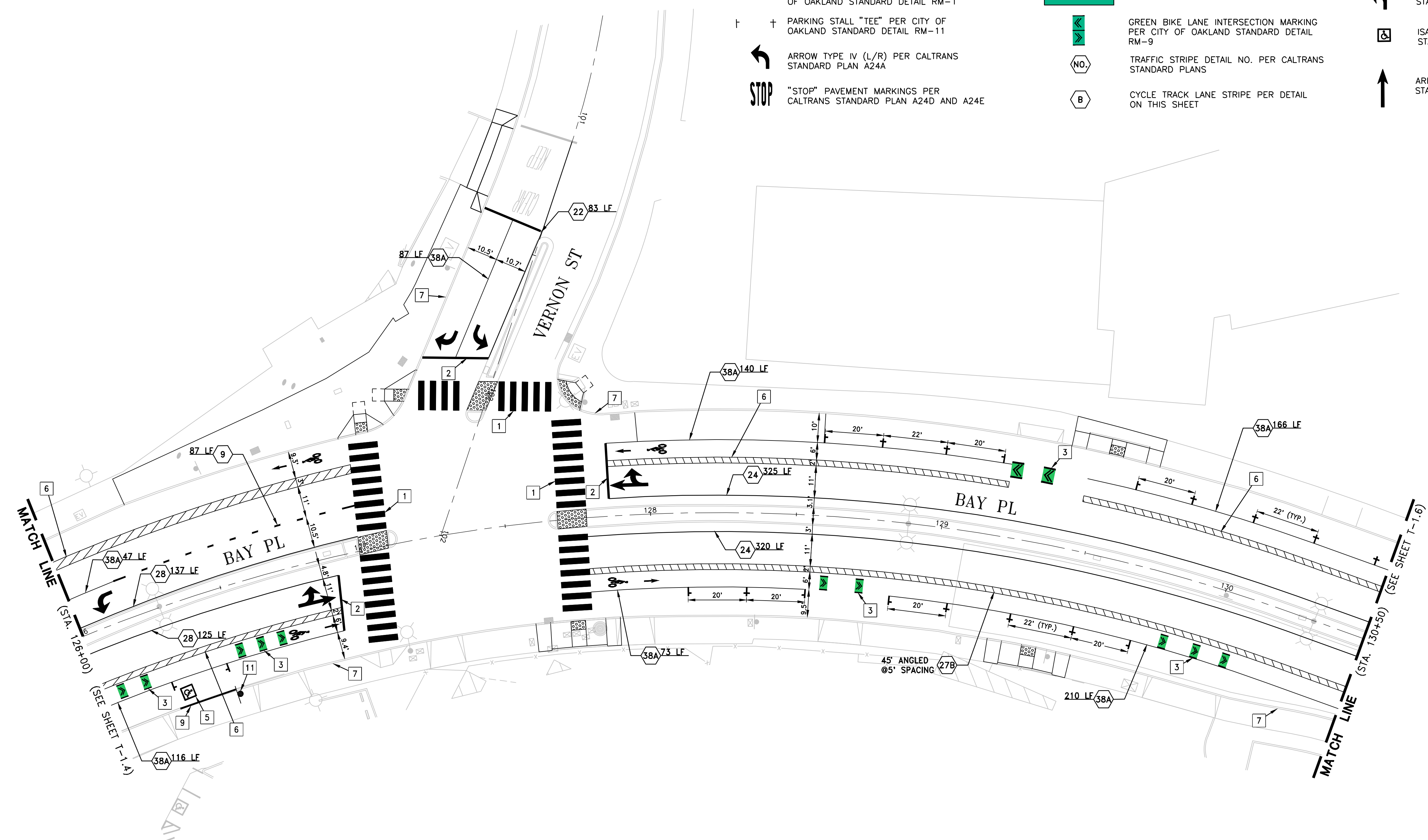
DRAWING NAME: J:\Jobs\8785 Oakland Transportation On-Call\T08 27th Street\Civil\Draw\02_Sheets\C_58-STRP04-27th.dwg
 PLOT DATE: 06-27-24
 PLOTTED BY: troper

- LEGEND:**
- BIKE LANE SYMBOL AND ARROW, PER CITY OF OAKLAND STANDARD DETAIL RM-1
 - PARKING STALL "TEE" PER CITY OF OAKLAND STANDARD DETAIL RM-11
 - ARROW TYPE IV (L/R) PER CALTRANS STANDARD PLAN A24A
 - "STOP" PAVEMENT MARKINGS PER CALTRANS STANDARD PLAN A24D AND A24E

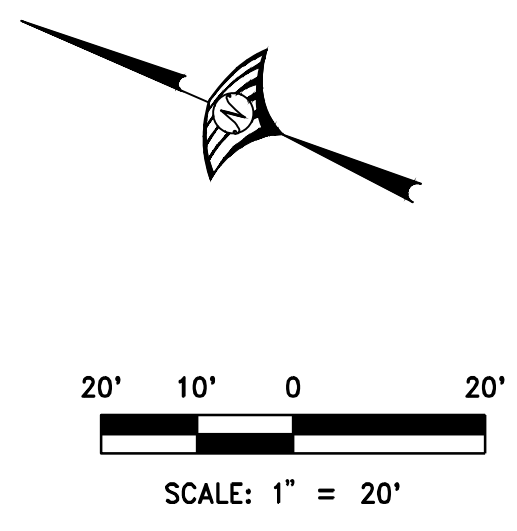
- GREEN PAVEMENT MARKING
- GREEN BIKE LANE INTERSECTION MARKING PER CITY OF OAKLAND STANDARD DETAIL RM-9
- TRAFFIC STRIPE DETAIL NO. PER CALTRANS STANDARD PLANS
- CYCLE TRACK LANE STRIPE PER DETAIL ON THIS SHEET

- ARROW TYPE VII (L/R) PER CALTRANS STANDARD PLAN A24A
- ISA MARKING PER CALTRANS STANDARD PLAN A90A
- ARROW TYPE I (10') PER CALTRANS STANDARD PLAN A24A

- PARKING STALL CITY OF OAKLAND STANDARD DETAIL T-1
- "NO PARKING" PAVEMENT MARKING PER CALTRANS STANDARD PLAN A90B



- CONSTRUCTION NOTES:**
- 1 INSTALL WHITE CONTINENTAL CROSSWALK PER CITY OF OAKLAND STANDARD DETAIL RM-4 AND RM-4A
 - 2 INSTALL 1' WIDE WHITE THERMOPLASTIC STRIPING 8' FROM CROSSWALK UNLESS OTHERWISE NOTED
 - 3 INSTALL BIKE LANE INTERSECTION MARKING DETAIL PER CITY OF OAKLAND DETAIL GB-4. SPACE MARKINGS PER DETAILS UNLESS OTHERWISE SHOWN.
 - 4 INSTALL ACCESSIBLE DIAGONAL PARKING STALL PER CALTRANS STANDARD PLAN A90B
 - 5 INSTALL ACCESSIBLE PARALLEL PARKING STALL PER CALTRANS STANDARD PLAN A90B
 - 6 INSTALL 6" WHITE STRIPE EVERY 5' O.C. AT 45 DEGREES.
 - 7 PAINT CURB RED
 - 8 PAINT CURB YELLOW
 - 9 PAINT CURB BLUE
 - 10 INSTALL BIKE BOX PER CITY OF OAKLAND STANDARD DETAIL RM-8 AND RM-8A
 - 11 INSTALL CA MUTCD R99 (CA) SIGN



CAUTION: THIS PLAN MAY BE REDUCED

CITY OF OAKLAND
 DEPARTMENT OF TRANSPORTATION
 250 FRANK H. OGAWA PLAZA, SUITE 4314
 OAKLAND, CA 94612
 (510) 238-3437
 FAX (510) 238-7227

**PLANS FOR THE CONSTRUCTION OF
 27TH STREET COMPLETE STREETS PROJECT**

No.	DATE	BY	REFERENCE

WOOD RODGERS
 BUILDING RELATIONSHIPS ONE PROJECT AT A TIME
 3301 C ST, BLDG. 100-B TEL 916.341.7760
 SACRAMENTO, CA 95816 FAX 916.341.7767

CHECKED BY: S. ROBINSON
 DESIGNED BY: T. ROPER
 DRAWN BY: T. ROPER

CONSTRUCTION PLANS:
 SIGNAGE AND STRIPING PLAN

C1003978

SCALE: 1"=20'
 HOR: 1"=20'
 VERT: 1"=20'
 DATE: 06/2023

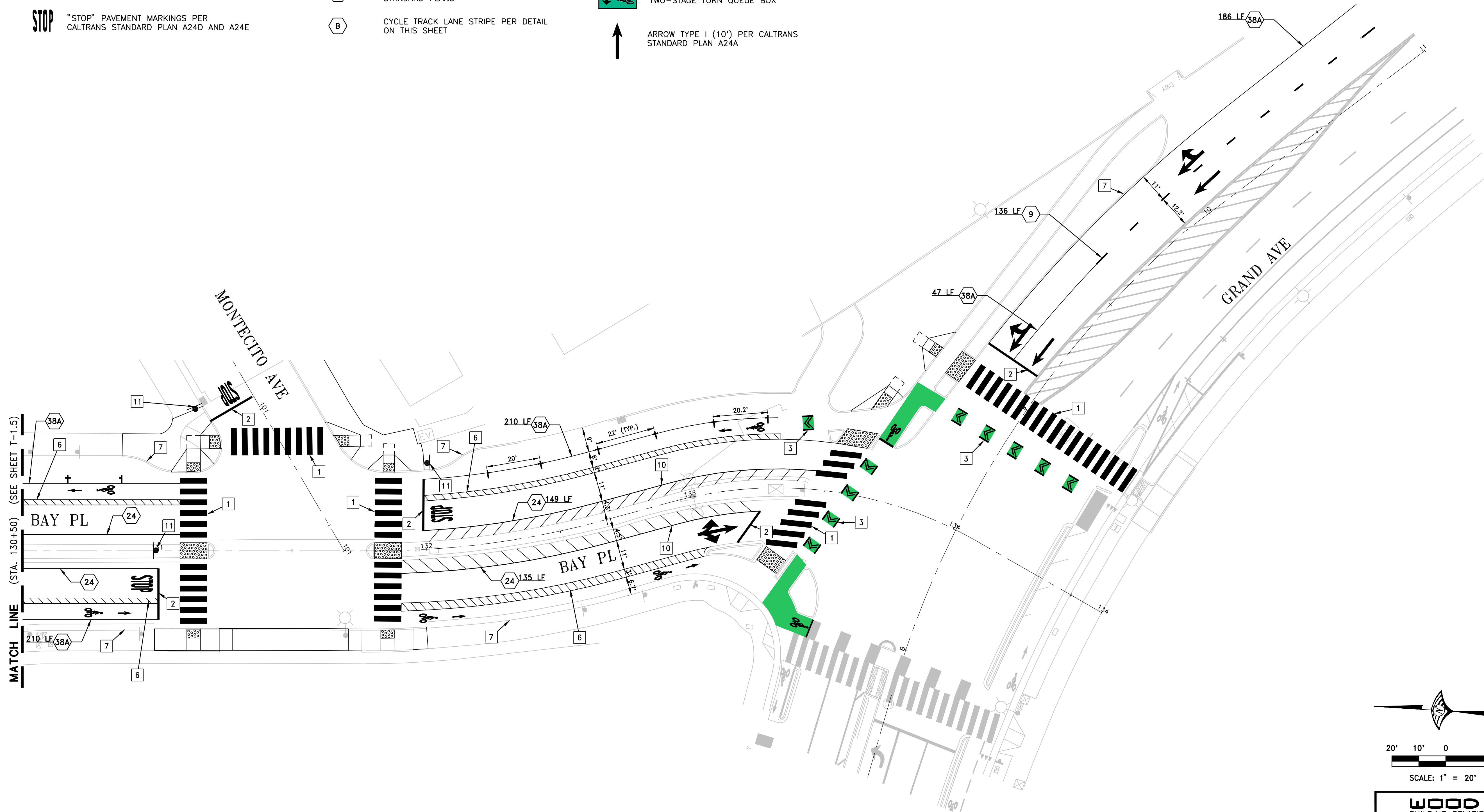
SHEET NO.
T-1.5
59 OF **68**

DRAWING NAME: J:\Jobs\8785 Oakland Transportation On-Call\TO 27th Street\Draw\02_Sheets\C_58-STRPOS-27th.dwg
 PLOT DATE: 06-27-24
 PLOTTED BY: troper

- LEGEND:**
- BIKE LANE SYMBOL AND ARROW, PER CITY OF OAKLAND STANDARD DETAIL RM-1
 - PARKING STALL "TEE" PER CITY OF OAKLAND STANDARD DETAIL RM-11
 - ARROW TYPE IV (L/R) PER CALTRANS STANDARD PLAN A24A
 - "STOP" PAVEMENT MARKINGS PER CALTRANS STANDARD PLAN A24D AND A24E

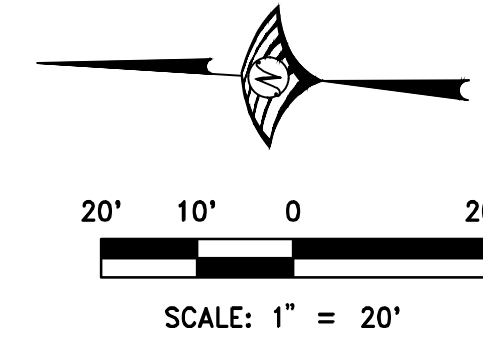
- GREEN PAVEMENT MARKING
- GREEN BIKE LANE INTERSECTION MARKING PER CITY OF OAKLAND STANDARD DETAIL RM-9
- TRAFFIC STRIPE DETAIL NO. PER CALTRANS STANDARD PLANS
- CYCLE TRACK LANE STRIPE PER DETAIL ON THIS SHEET

- ARROW TYPE VII (L/R) PER CALTRANS STANDARD PLAN A24A
- ISA MARKING PER CALTRANS STANDARD PLAN A90A
- TWO-STAGE TURN QUEUE BOX
- ARROW TYPE I (10') PER CALTRANS STANDARD PLAN A24A



CONSTRUCTION NOTES:

- 1 INSTALL WHITE CONTINENTAL CROSSWALK PER CITY OF OAKLAND STANDARD DETAIL RM-4 AND RM-4A
- 2 INSTALL 1" WIDE WHITE THERMOPLASTIC STRIPING 8" FROM CROSSWALK UNLESS OTHERWISE NOTED
- 3 INSTALL BIKE LANE INTERSECTION MARKING DETAIL PER CITY OF OAKLAND DETAIL GB-4. SPACE MARKINGS PER DETAILS UNLESS OTHERWISE SHOWN.
- 4 INSTALL ACCESSIBLE DIAGONAL PARKING STALL PER CALTRANS STANDARD PLAN A90B
- 5 INSTALL ACCESSIBLE PARALLEL PARKING STALL PER CALTRANS STANDARD PLAN A90B
- 6 INSTALL 6" WHITE STRIPE EVERY 5' O.C. AT 45 DEGREES.
- 7 PAINT CURB RED
- 8 PAINT CURB YELLOW
- 9 PAINT CURB BLUE
- 10 INSTALL 6" YELLOW STRIPE EVERY 5' O.C. AT 45 DEGREES.
- 11 INSTALL CA MUTCD R1-1 (CA) SIGN



WOOD RODGERS BUILDING RELATIONSHIPS ONE PROJECT AT A TIME 3301 C ST, BLDG. 100-B TEL 916.341.7760 SACRAMENTO, CA 95816 FAX 916.341.7767	
CHECKED BY	S. ROBINSON
DESIGNED BY	T. ROPER
DRAWN BY	T. ROPER

CAUTION: THIS PLAN MAY BE REDUCED



CITY OF OAKLAND
DEPARTMENT OF TRANSPORTATION
250 FRANK H. OGAWA PLAZA, SUITE 4314
OAKLAND, CA 94612
(510) 238-3437
FAX (510) 238-7227

**PLANS FOR THE CONSTRUCTION OF
27TH STREET COMPLETE STREETS PROJECT**

No.	DATE	BY	REFERENCE

CONSTRUCTION PLANS:
SIGNAGE AND STRIPING PLAN

C1003978

SCALE: 1"=20'
HOR: 1"=20'
VERT: 1"=20'
DATE: 06/2023

SHEET NO.
T-1.6
60 OF **68**

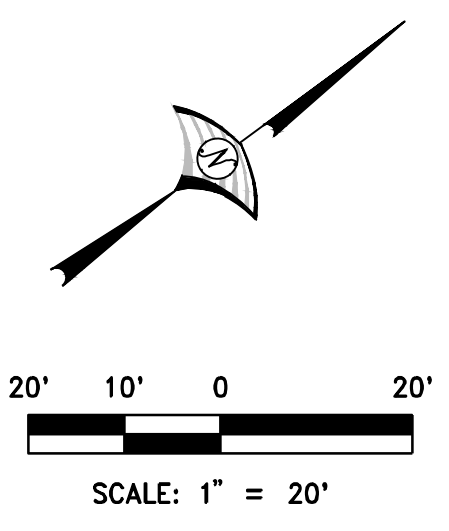
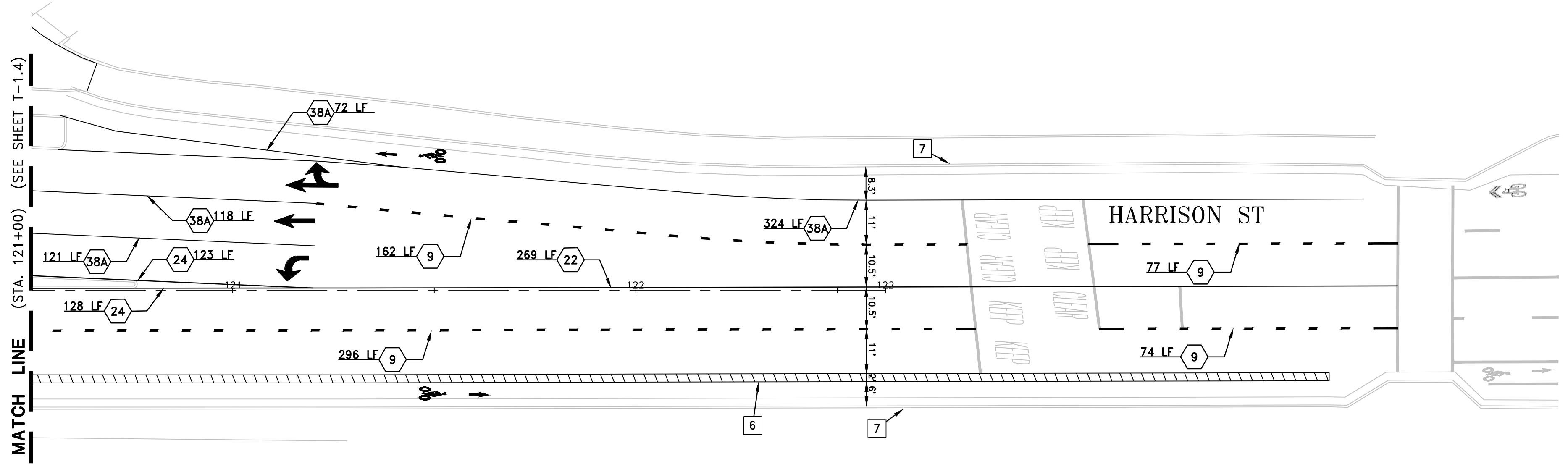
- LEGEND:**
- BIKE LANE SYMBOL AND ARROW, PER CITY OF OAKLAND STANDARD DETAIL RM-1
 - PARKING STALL "TEE" PER CITY OF OAKLAND STANDARD DETAIL RM-11
 - ARROW TYPE IV (L/R) PER CALTRANS STANDARD PLAN A24A
 - "STOP" PAVEMENT MARKINGS PER CALTRANS STANDARD PLAN A24D AND A24E

- GREEN PAVEMENT MARKING
- GREEN BIKE LANE INTERSECTION MARKING PER CITY OF OAKLAND STANDARD DETAIL RM-9
- TRAFFIC STRIPE DETAIL NO. PER CALTRANS STANDARD PLANS
- CYCLE TRACK LANE STRIPE PER DETAIL ON THIS SHEET

- ARROW TYPE VII (L/R) PER CALTRANS STANDARD PLAN A24A
- ISA MARKING PER CALTRANS STANDARD PLAN A90A
- ARROW TYPE I (10') PER CALTRANS STANDARD PLAN A24A

CONSTRUCTION NOTES:

- 1 INSTALL WHITE CONTINENTAL CROSSWALK PER CITY OF OAKLAND STANDARD DETAIL RM-4 AND RM-4A
- 2 INSTALL 1' WIDE WHITE THERMOPLASTIC STRIPING 8" FROM CROSSWALK UNLESS OTHERWISE NOTED
- 3 INSTALL BIKE LANE INTERSECTION MARKING DETAIL PER CITY OF OAKLAND DETAIL GB-4. SPACE MARKINGS PER DETAILS UNLESS OTHERWISE SHOWN.
- 4 INSTALL ACCESSIBLE DIAGONAL PARKING STALL PER CALTRANS STANDARD PLAN A90B
- 5 INSTALL ACCESSIBLE PARALLEL PARKING STALL PER CALTRANS STANDARD PLAN A90B
- 6 INSTALL 6" WHITE STRIPE EVERY 5' O.C. AT 45 DEGREES.
- 7 PAINT CURB RED
- 8 PAINT CURB YELLOW
- 9 PAINT CURB BLUE
- 10 INSTALL BIKE BOX PER CITY OF OAKLAND STANDARD DETAIL RM-8 AND RM-8A



CAUTION: THIS PLAN MAY BE REDUCED

WOOD RODGERS BUILDING RELATIONSHIPS ONE PROJECT AT A TIME 3301 C ST, BLDG. 100-B TEL 916.341.7760 SACRAMENTO, CA 95816 FAX 916.341.7767	
CHECKED BY	S. ROBINSON
DESIGNED BY	T. ROPER
DRAWN BY	T. ROPER

CITY OF OAKLAND
DEPARTMENT OF TRANSPORTATION
250 FRANK H. OGAWA PLAZA, SUITE 4314
OAKLAND, CA 94612
(510) 238-3437
FAX (510) 238-7227

**PLANS FOR THE CONSTRUCTION OF
27TH STREET COMPLETE STREETS PROJECT**

No.	DATE	BY	REFERENCE

CONSTRUCTION PLANS:
SIGNAGE AND STRIPING PLAN

C1003978

SCALE: HOR: 1"=20' VERT: DATE: 06/2023	SHEET NO. T-1.7 61 OF 68
---	--------------------------------

DRAWING NAME: J:\Jobs\8785 Oakland Transportation On-Call\10 27th Street\Civil\Draw\02_Signage\02_Signage_C_61-STRIP07-27th.dwg
PLOT DATE: 06-27-24
PLOT BY: troper

27th and Lakeside Streets Projects

Improving bicycle and pedestrian safety North of Lake Merritt



City of
Oakland

Department of
Transportation

SCHEDULE/NEXT STEPS

- » Winter 2024
 - 65% Plans for 27th Street/Bay Place
- » Spring 2024
 - Outreach to gather feedback on 65% Plans
- » 2025
 - 100% Plans for 27th Street/Bay Place
- » Spring 2025
 - Construction for Lakeside Family Streets
- » Fall 2025
 - Construction for 27th Street/Bay Place