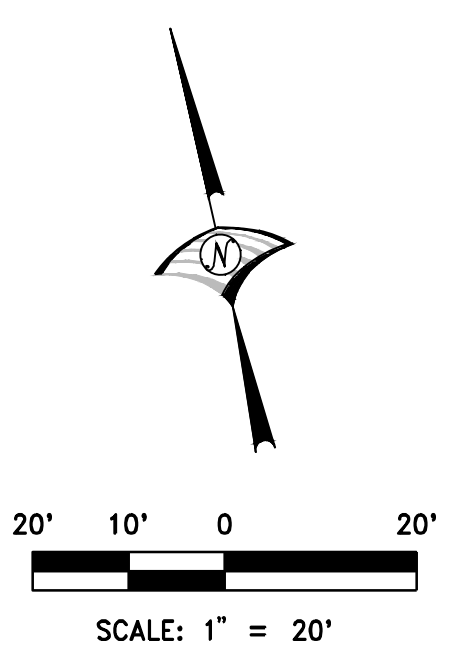
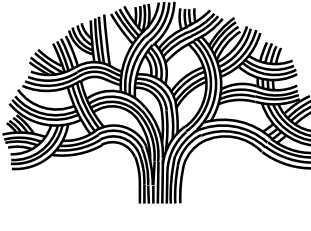


- GENERAL NOTES:**
- SEE SHEET G-1.2 FOR ROADWAY ALIGNMENT DATA.
  - SEE TRAFFIC SHEETS FOR SIGNING AND STRIPING.
  - SEE CURB RAMP (CR) SHEETS FOR MODIFIED CURB RAMP DETAILS.
  - SEE BUS ISLAND (BI) SHEETS FOR BUS BOARDING ISLAND DETAILS.
  - PROTECT ALL UTILITY FACILITIES OUTSIDE OF IMMEDIATE IMPROVEMENT AREAS; CONTRACTOR TO CONFIRM NUMBER OF UTILITY COVERS WITH RESIDENT ENGINEER BEFORE THE COMMENCEMENT OF ANY CONSTRUCTION ACTIVITY.
  - CONTRACTOR SHALL REMOVE ALL (E) PAVEMENT STRIPING AND MARKINGS AND REMOVE AND REPLACE (E) OR INSTALL NEW SIGNAGE PER THE STRIPING AND SIGNING PLANS. ALL (E) PAVEMENT STRIPING AND MARKINGS TO BE REMOVED PRIOR TO SLURRY SEAL.
  - CONTRACTOR SHALL REMOVE, PROVIDE 12" WIDE AND 12" FULL DEPTH HMA SECTION ADJACENT TO ALL RAISED ISLAND AND CURB RAMP IMPROVEMENT.
  - SEE GRADING SHEET FOR TC/FL ELEVATION AND POINT DATA.
- KEY NOTES:**
- ADJUST UTILITY FRAME AND COVER, UTILITY VAULT, VALVE BOX, STREETLIGHT, OR MONUMENT CASING TO FINISH GRADE PER APPLICABLE CITY AND STATE STANDARDS.
  - ADJUST FACILITY TO FINISH GRADE (BY OTHERS).
  - PROTECT EX. UTILITY STRUCTURE IN PLACE.



<b>WOOD RODGERS</b> BUILDING RELATIONSHIPS ONE PROJECT AT A TIME 3301 C ST, BLDG. 100-B TEL 916.341.7760 SACRAMENTO, CA 95816 FAX 916.341.7767	
CHECKED BY	S. ROBINSON
DESIGNED BY	T. ROPER
DRAWN BY	T. ROPER

CAUTION: THIS PLAN MAY BE REDUCED



**CITY OF OAKLAND**  
DEPARTMENT OF TRANSPORTATION  
250 FRANK H. OGAWA PLAZA, SUITE 4314  
OAKLAND, CA 94612  
(510) 238-3437  
FAX (510) 238-7227

**PLANS FOR THE CONSTRUCTION OF  
27TH STREET COMPLETE STREETS PROJECT**

No.	DATE	BY	REFERENCE

**CONSTRUCTION PLANS:**  
  
LAYOUT PLAN  
STA 100+00 TO STA 105+50

**C1003978**  
  
SCALE: 1"=20'  
HOR: 1"=20'  
VERT: 1"=20'  
DATE: 06/2023

SHEET NO.  
**C-1.1**  
12 OF 21

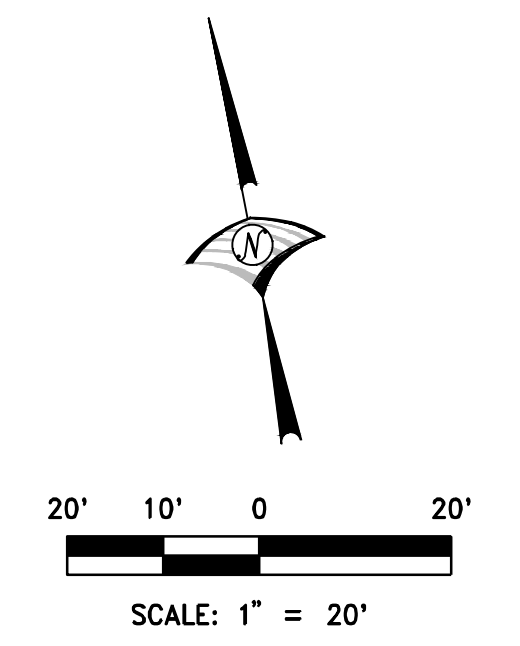
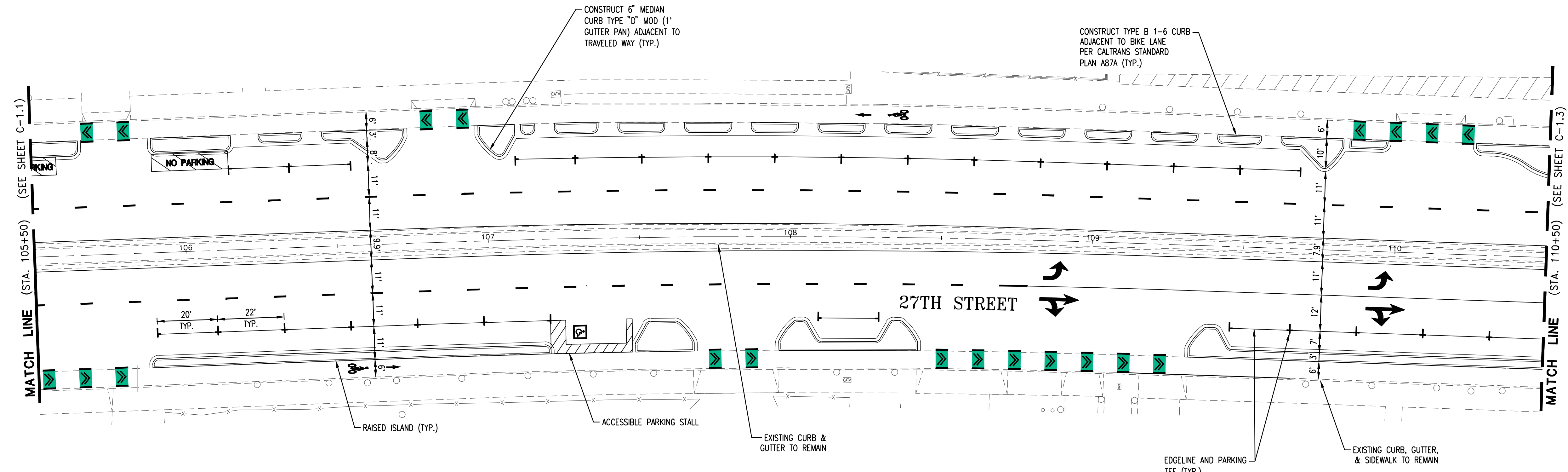
DRAWING NAME: J:\Jobs\8785 Oakland Transportation On-Call\TO & 27th Street\Civil\Draw\02\_Sheets\C\_1-1-L01-27th.dwg  
PLOT DATE: 11-22-23  
PLOTTED BY: gossard

**GENERAL NOTES:**

1. SEE SHEET G-1.2 FOR ROADWAY ALIGNMENT DATA.
2. SEE TRAFFIC SHEETS FOR SIGNING AND STRIPING.
3. SEE CURB RAMP (CR) SHEETS FOR MODIFIED CURB RAMP DETAILS.
4. SEE BUS ISLAND (BI) SHEETS FOR BUS BOARDING ISLAND DETAILS.
5. PROTECT ALL UTILITY FACILITIES OUTSIDE OF IMMEDIATE IMPROVEMENT AREAS; CONTRACTOR TO CONFIRM NUMBER OF UTILITY COVERS WITH RESIDENT ENGINEER BEFORE THE COMMENCEMENT OF ANY CONSTRUCTION ACTIVITY.
6. CONTRACTOR SHALL REMOVE ALL (E) PAVEMENT STRIPING AND MARKINGS AND REMOVE AND REPLACE (E) OR INSTALL NEW SIGNAGE PER THE STRIPING AND SIGNING PLANS. ALL (E) PAVEMENT STRIPING AND MARKINGS TO BE REMOVED PRIOR TO SLURRY SEAL.
7. CONTRACTOR SHALL REMOVE PROVIDE 12" WIDE AND 12" FULL DEPTH HMA SECTION ADJACENT TO ALL RAISED ISLAND AND CURB RAMP IMPROVEMENT.
8. SEE GRADING SHEET FOR TC/FL ELEVATION AND POINT DATA.

**KEY NOTES:**

- ① ADJUST UTILITY FRAME AND COVER, UTILITY VAULT, VALVE BOX, STREETLIGHT, OR MONUMENT CASING TO FINISH GRADE PER APPLICABLE CITY AND STATE STANDARDS.
- ② ADJUST FACILITY TO FINISH GRADE (BY OTHERS).
- ③ PROTECT EX. UTILITY STRUCTURE IN PLACE.



CAUTION: THIS PLAN MAY BE REDUCED

**CITY OF OAKLAND**  
 DEPARTMENT OF TRANSPORTATION  
 250 FRANK H. OGAWA PLAZA, SUITE 4314  
 OAKLAND, CA 94612  
 (510) 238-3437  
 FAX (510) 238-7227

**PLANS FOR THE CONSTRUCTION OF  
 27TH STREET COMPLETE STREETS PROJECT**

No.	DATE	BY	REFERENCE

**WOOD RODGERS**  
 BUILDING RELATIONSHIPS ONE PROJECT AT A TIME  
 3301 C ST, BLDG. 100-B TEL 916.341.7760  
 SACRAMENTO, CA 95816 FAX 916.341.7767

CHECKED BY: S. ROBINSON  
 DESIGNED BY: T. ROPER  
 DRAWN BY: T. ROPER

**CONSTRUCTION PLANS:**

LAYOUT PLAN  
 STA 105+50 TO STA 110+50

**C1003978**

SCALE: 1"=20'  
 HOR: 1"=20'  
 VERT: 1"=20'  
 DATE: 06/2023

SHEET NO.  
**C-1.2**  
 13 OF 21

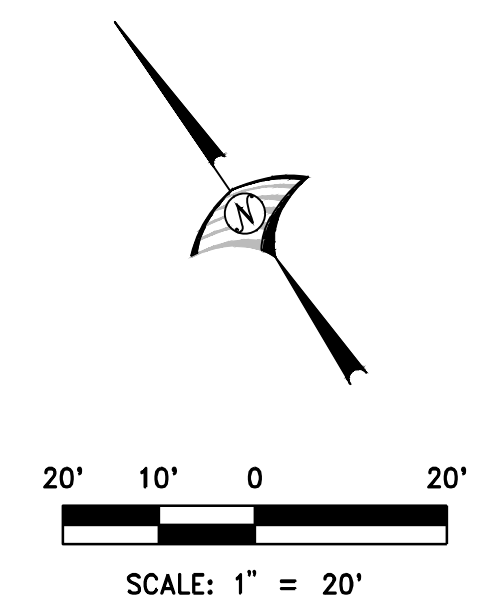
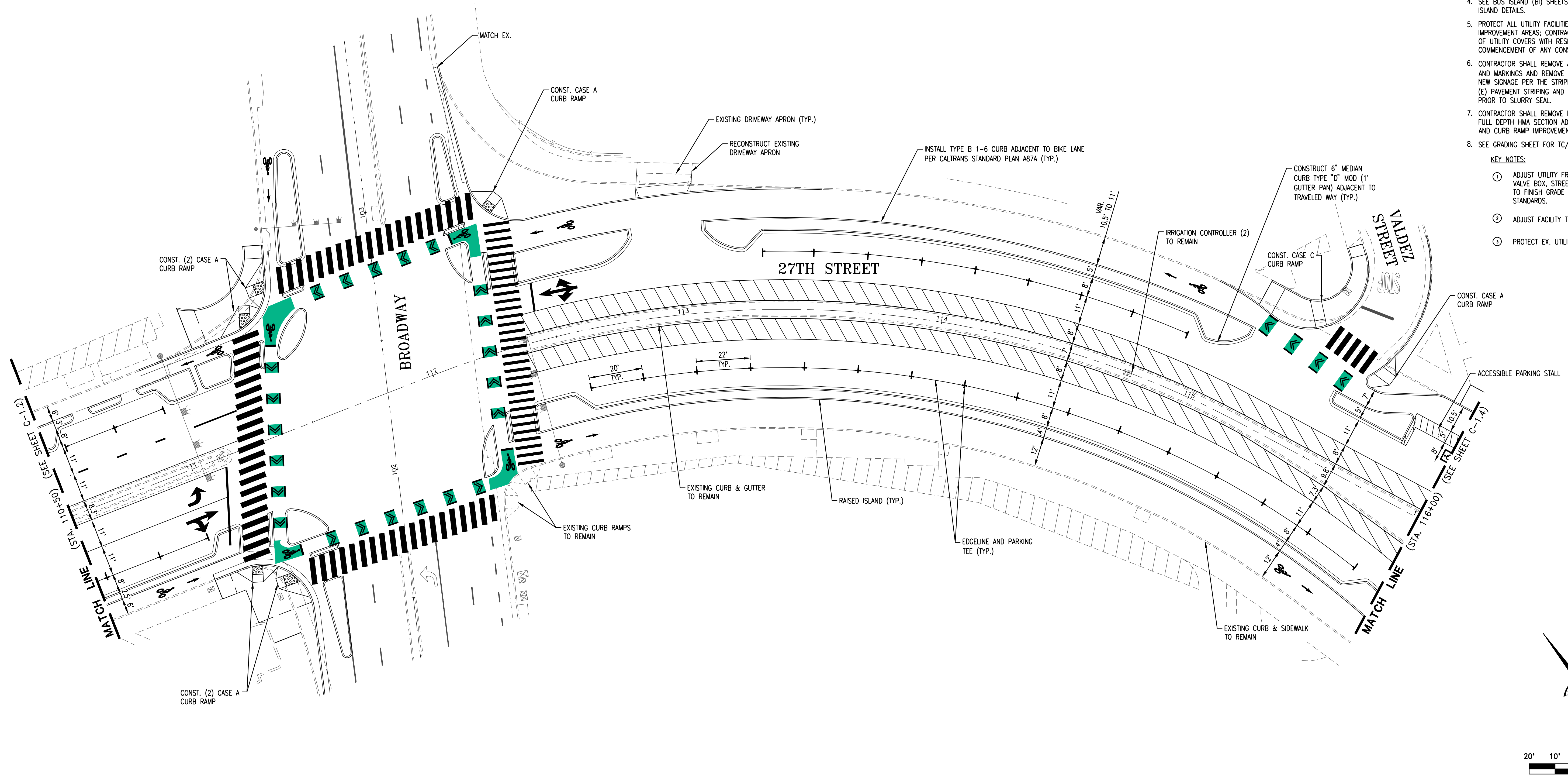
DRAWING NAME: J:\Jobs\8785 Oakland Transportation On-Call\10 27th Street\Civil\Draw\02\_Sheets\C\_12-102-27th.dwg  
 PLOT DATE: 11-22-23  
 PLOTTED BY: gnsakar

**GENERAL NOTES:**

1. SEE SHEET G-1.2 FOR ROADWAY ALIGNMENT DATA.
2. SEE TRAFFIC SHEETS FOR SIGNING AND STRIPING.
3. SEE CURB RAMP (CR) SHEETS FOR MODIFIED CURB RAMP DETAILS.
4. SEE BUS ISLAND (BI) SHEETS FOR BUS BOARDING ISLAND DETAILS.
5. PROTECT ALL UTILITY FACILITIES OUTSIDE OF IMMEDIATE IMPROVEMENT AREAS; CONTRACTOR TO CONFIRM NUMBER OF UTILITY COVERS WITH RESIDENT ENGINEER BEFORE THE COMMENCEMENT OF ANY CONSTRUCTION ACTIVITY.
6. CONTRACTOR SHALL REMOVE ALL (E) PAVEMENT STRIPING AND MARKINGS AND REPLACE (E) OR INSTALL NEW SIGNAGE PER THE STRIPING AND SIGNING PLANS. ALL (E) PAVEMENT STRIPING AND MARKINGS TO BE REMOVED PRIOR TO SLURRY SEAL.
7. CONTRACTOR SHALL REMOVE PROVIDE 12" WIDE AND 12" FULL DEPTH HMA SECTION ADJACENT TO ALL RAISED ISLAND AND CURB RAMP IMPROVEMENT.
8. SEE GRADING SHEET FOR TC/FL ELEVATION AND POINT DATA.

**KEY NOTES:**

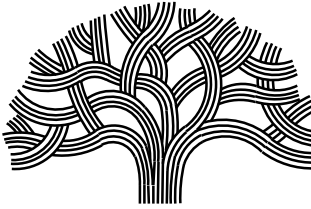
- ① ADJUST UTILITY FRAME AND COVER, UTILITY VAULT, VALVE BOX, STREETLIGHT, OR MONUMENT CASING TO FINISH GRADE PER APPLICABLE CITY AND STATE STANDARDS.
- ② ADJUST FACILITY TO FINISH GRADE (BY OTHERS).
- ③ PROTECT EX. UTILITY STRUCTURE IN PLACE.



<b>WOOD RODGERS</b> BUILDING RELATIONSHIPS ONE PROJECT AT A TIME 3301 C ST, BLDG. 100-B TEL 916.341.7760 SACRAMENTO, CA 95816 FAX 916.341.7767	
CHECKED BY	S. ROBINSON
DESIGNED BY	T. ROPER
DRAWN BY	T. ROPER

<b>CONSTRUCTION PLANS:</b>	<b>C1003978</b>
	LAYOUT PLAN STA 110+50 TO STA 116+00
SCALE: HOR: 1"=20' VERT: DATE: 06/2023	SHEET NO. <b>C-1.3</b> 14 OF 21

CAUTION: THIS PLAN MAY BE REDUCED

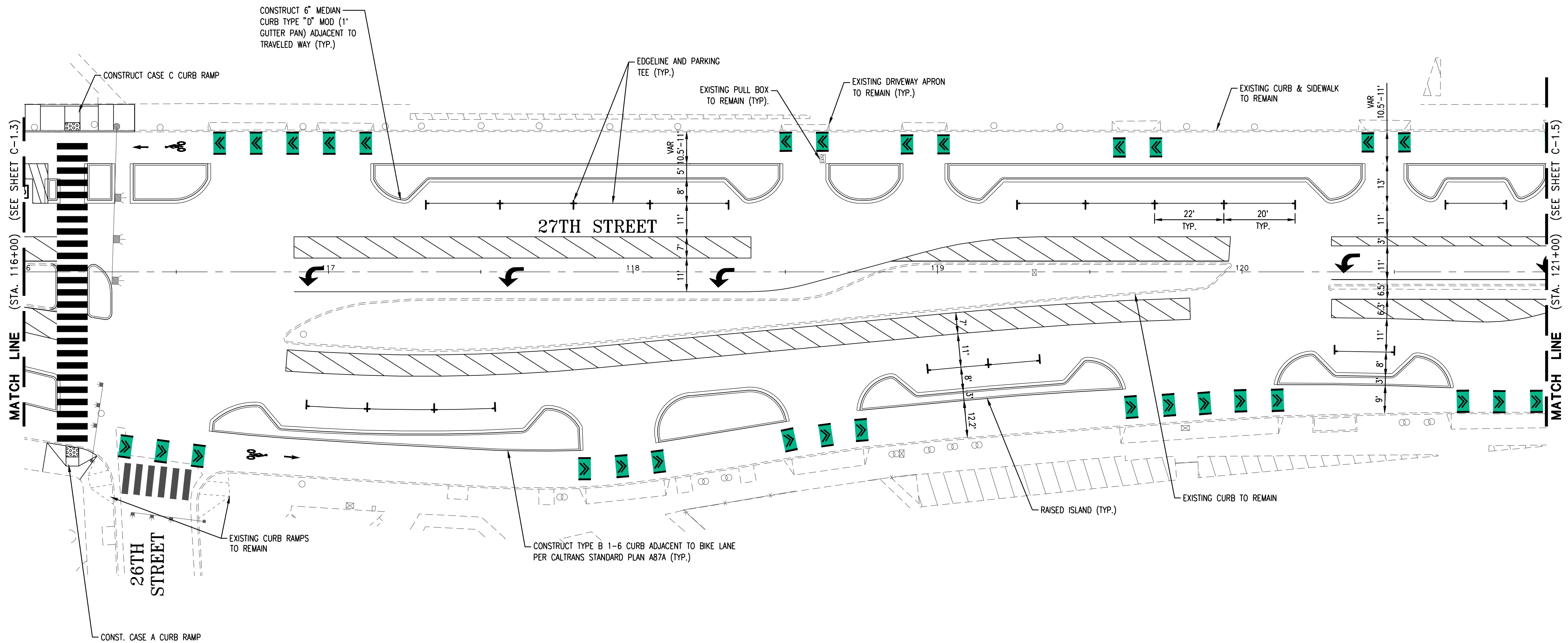


**CITY OF OAKLAND**  
DEPARTMENT OF TRANSPORTATION  
250 FRANK H. OGAWA PLAZA, SUITE 4314  
OAKLAND, CA 94612  
(510) 238-3437  
FAX (510) 238-7227

**PLANS FOR THE CONSTRUCTION OF  
27TH STREET COMPLETE STREETS PROJECT**

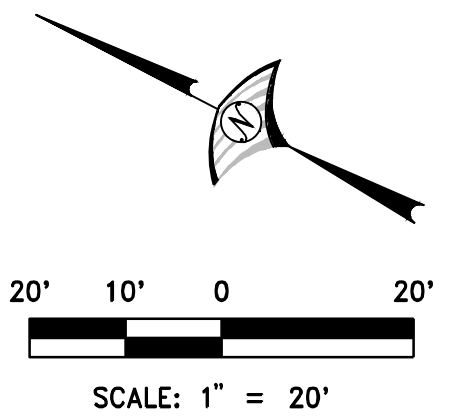
No.	DATE	BY	REFERENCE

DRAWING NAME: J:\Jobs\8785 Oakland Transportation On-Call\10 27th Street\Civil\Draw\02\_Sheets\C\_13-08-27th.dwg  
PLOT DATE: 11-22-23  
PLOTTED BY: gnsakar



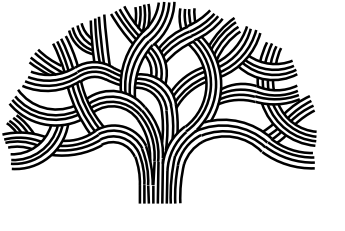
- GENERAL NOTES:**
1. SEE SHEET G-1.2 FOR ROADWAY ALIGNMENT DATA.
  2. SEE TRAFFIC SHEETS FOR SIGNING AND STRIPING.
  3. SEE CURB RAMP (CR) SHEETS FOR MODIFIED CURB RAMP DETAILS.
  4. SEE BUS ISLAND (BI) SHEETS FOR BUS BOARDING ISLAND DETAILS.
  5. PROTECT ALL UTILITY FACILITIES OUTSIDE OF IMMEDIATE IMPROVEMENT AREAS; CONTRACTOR TO CONFIRM NUMBER OF UTILITY COVERS WITH RESIDENT ENGINEER BEFORE THE COMMENCEMENT OF ANY CONSTRUCTION ACTIVITY.
  6. CONTRACTOR SHALL REMOVE ALL (E) PAVEMENT STRIPING AND MARKINGS AND REMOVE AND REPLACE (E) OR INSTALL NEW SIGNAGE PER THE STRIPING AND SIGNING PLANS. ALL (E) PAVEMENT STRIPING AND MARKINGS TO BE REMOVED PRIOR TO SLURRY SEAL.
  7. CONTRACTOR SHALL REMOVE PROVIDE 12" WIDE AND 12" FULL DEPTH HMA SECTION ADJACENT TO ALL RAISED ISLAND AND CURB RAMP IMPROVEMENT.
  8. SEE GRADING SHEET FOR TC/FL ELEVATION AND POINT DATA.

- KEY NOTES:**
- ① ADJUST UTILITY FRAME AND COVER, UTILITY VAULT, VALVE BOX, STREETLIGHT, OR MONUMENT CASING TO FINISH GRADE PER APPLICABLE CITY AND STATE STANDARDS.
  - ② ADJUST FACILITY TO FINISH GRADE (BY OTHERS).
  - ③ PROTECT EX. UTILITY STRUCTURE IN PLACE.



<b>WOOD RODGERS</b> BUILDING RELATIONSHIPS ONE PROJECT AT A TIME 3301 C ST, BLDG. 100-B TEL 916.341.7760 SACRAMENTO, CA 95816 FAX 916.341.7767	
CHECKED BY	S. ROBINSON
DESIGNED BY	T. ROPER
DRAWN BY	T. ROPER

CAUTION: THIS PLAN MAY BE REDUCED



**CITY OF OAKLAND**  
DEPARTMENT OF TRANSPORTATION  
250 FRANK H. OGAWA PLAZA, SUITE 4314  
OAKLAND, CA 94612  
(510) 238-3437  
FAX (510) 238-7227

**PLANS FOR THE CONSTRUCTION OF  
27TH STREET COMPLETE STREETS PROJECT**

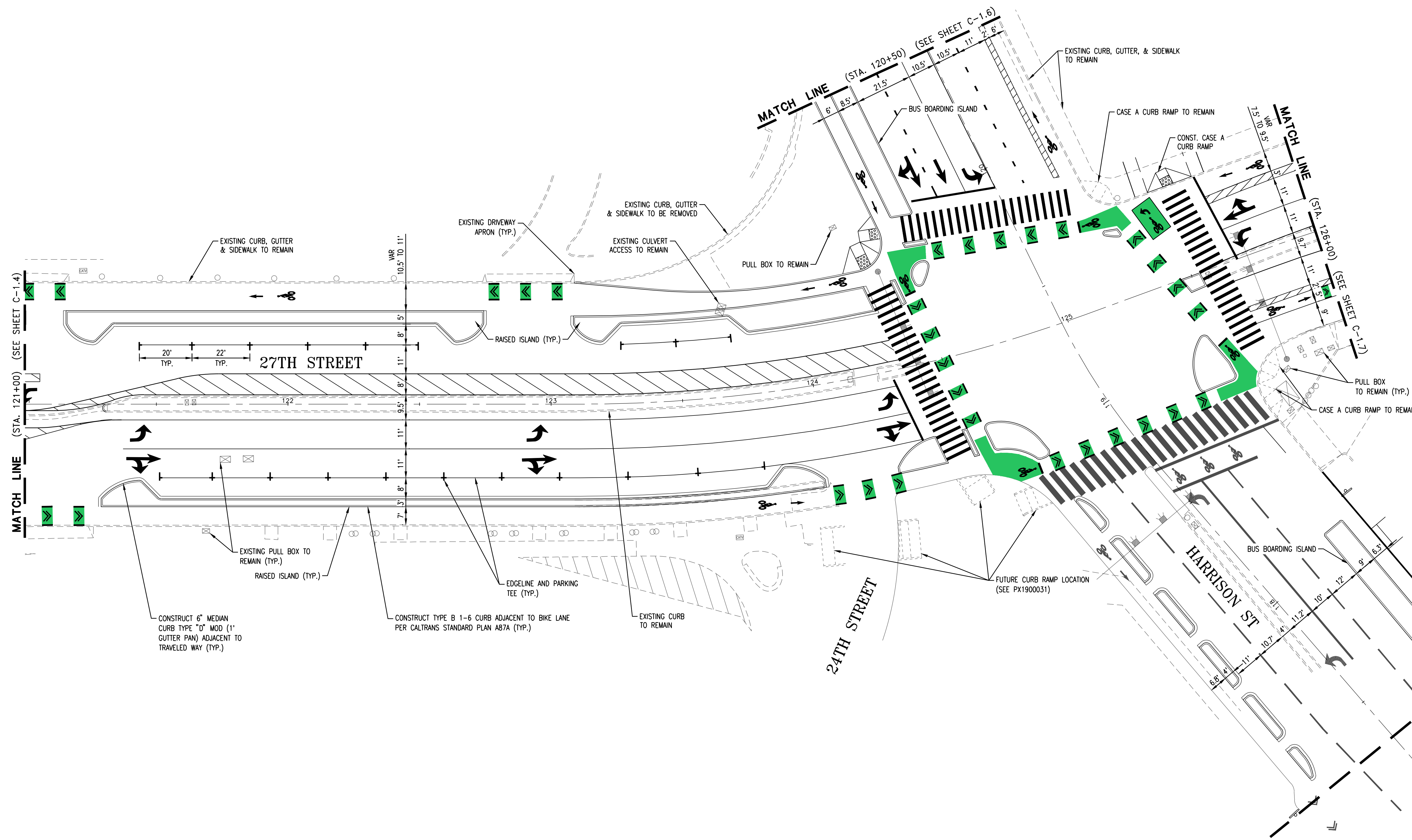
No.	DATE	BY	REFERENCE

**CONSTRUCTION PLANS:**  
  
LAYOUT PLAN  
STA 116+00 TO STA 121+00

**C1003978**  
  
SCALE:  
HOR: 1"=20'  
VERT:  
DATE: 06/2023

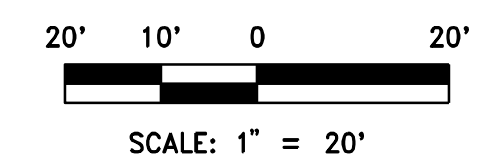
SHEET NO.  
**C-1.4**  
15 OF 21

DRAWING NAME: J:\Jobs\8785 Oakland Transportation On-Call\TO & 27th Street\Civil\Draw\02\_Sheets\C\_14-L04-27th.dwg  
PLOT DATE: 11-22-23  
PLOTTED BY: gossard



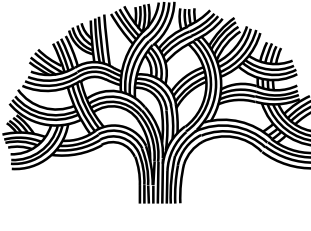
- GENERAL NOTES:**
- SEE SHEET G-1.2 FOR ROADWAY ALIGNMENT DATA.
  - SEE TRAFFIC SHEETS FOR SIGNING AND STRIPING.
  - SEE CURB RAMP (CR) SHEETS FOR MODIFIED CURB RAMP DETAILS.
  - SEE BUS ISLAND (BI) SHEETS FOR BUS BOARDING ISLAND DETAILS.
  - PROTECT ALL UTILITY FACILITIES OUTSIDE OF IMMEDIATE IMPROVEMENT AREAS; CONTRACTOR TO CONFIRM NUMBER OF UTILITY COVERS WITH RESIDENT ENGINEER BEFORE THE COMMENCEMENT OF ANY CONSTRUCTION ACTIVITY.
  - CONTRACTOR SHALL REMOVE ALL (E) PAVEMENT STRIPING AND MARKINGS AND REMOVE AND REPLACE (E) OR INSTALL NEW SIGNAGE PER THE STRIPING AND SIGNING PLANS. ALL (E) PAVEMENT STRIPING AND MARKINGS TO BE REMOVED PRIOR TO SLURRY SEAL.
  - CONTRACTOR SHALL REMOVE PROVIDE 12" WIDE AND 12" FULL DEPTH HMA SECTION ADJACENT TO ALL RAISED ISLAND AND CURB RAMP IMPROVEMENT.
  - SEE GRADING SHEET FOR TC/FL ELEVATION AND POINT DATA.

- KEY NOTES:**
- ADJUST UTILITY FRAME AND COVER, UTILITY VAULT, VALVE BOX, STREETLIGHT, OR MONUMENT CASING TO FINISH GRADE PER APPLICABLE CITY AND STATE STANDARDS.
  - ADJUST FACILITY TO FINISH GRADE (BY OTHERS).
  - PROTECT EX. UTILITY STRUCTURE IN PLACE.



<b>WOOD RODGERS</b> BUILDING RELATIONSHIPS ONE PROJECT AT A TIME 3301 C ST, BLDG. 100-B TEL 916.341.7760 SACRAMENTO, CA 95816 FAX 916.341.7767	
CHECKED BY	S. ROBINSON
DESIGNED BY	T. ROPER
DRAWN BY	T. ROPER

CAUTION: THIS PLAN MAY BE REDUCED



**CITY OF OAKLAND**  
DEPARTMENT OF TRANSPORTATION  
250 FRANK H. OGAWA PLAZA, SUITE 4314  
OAKLAND, CA 94612  
(510) 238-3437  
FAX (510) 238-7227

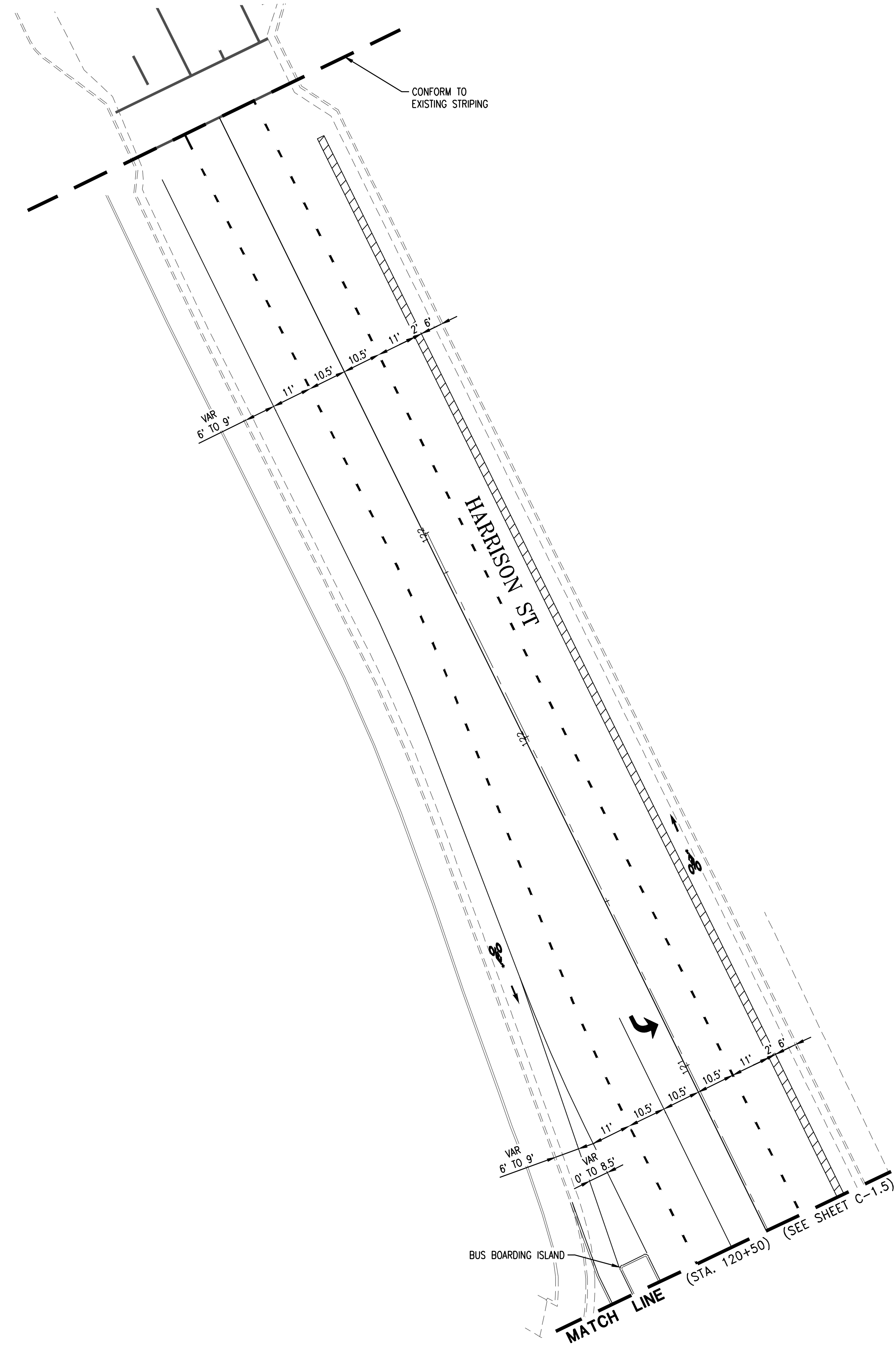
**PLANS FOR THE CONSTRUCTION OF  
27TH STREET COMPLETE STREETS PROJECT**

No.	DATE	BY	REFERENCE

**CONSTRUCTION PLANS:**  
  
LAYOUT PLAN  
STA 121+00 TO STA 126+00

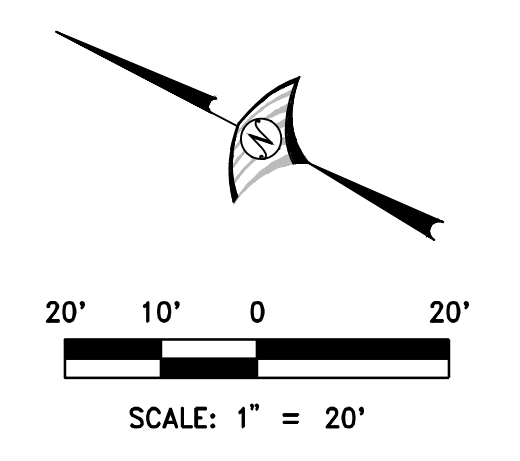
**C1003978**  
  
SCALE: 1"=20"  
HOR: 1"=20"  
VERT: 1"=20"  
DATE: 06/2023  
  
SHEET NO. C-1.5  
16 OF 21

DRAWING NAME: J:\Jobs\8785 Oakland Transportation On-Call\10 27th Street\Drawings\Sheet C-15-06-27th.dwg  
PLOT DATE: 11-22-23  
PLOTTED BY: troper



- GENERAL NOTES:**
- SEE SHEET G-1.2 FOR ROADWAY ALIGNMENT DATA.
  - SEE TRAFFIC SHEETS FOR SIGNING AND STRIPING.
  - SEE CURB RAMP (CR) SHEETS FOR MODIFIED CURB RAMP DETAILS.
  - SEE BUS ISLAND (BI) SHEETS FOR BUS BOARDING ISLAND DETAILS.
  - PROTECT ALL UTILITY FACILITIES OUTSIDE OF IMMEDIATE IMPROVEMENT AREAS; CONTRACTOR TO CONFIRM NUMBER OF UTILITY COVERS WITH RESIDENT ENGINEER BEFORE THE COMMENCEMENT OF ANY CONSTRUCTION ACTIVITY.
  - CONTRACTOR SHALL REMOVE ALL (E) PAVEMENT STRIPING AND MARKINGS AND REMOVE AND REPLACE (E) OR INSTALL NEW SIGNAGE PER THE STRIPING AND SIGNING PLANS. ALL (E) PAVEMENT STRIPING AND MARKINGS TO BE REMOVED PRIOR TO SLURRY SEAL.
  - CONTRACTOR SHALL REMOVE PROVIDE 12" WIDE AND 12" FULL DEPTH HMA SECTION ADJACENT TO ALL RAISED ISLAND AND CURB RAMP IMPROVEMENT.
  - SEE GRADING SHEET FOR TC/FL ELEVATION AND POINT DATA.

- KEY NOTES:**
- ADJUST UTILITY FRAME AND COVER, UTILITY VAULT, VALVE BOX, STREETLIGHT, OR MONUMENT CASING TO FINISH GRADE PER APPLICABLE CITY AND STATE STANDARDS.
  - ADJUST FACILITY TO FINISH GRADE (BY OTHERS).
  - PROTECT EX. UTILITY STRUCTURE IN PLACE.



<b>WOOD RODGERS</b> BUILDING RELATIONSHIPS ONE PROJECT AT A TIME 3301 C ST, BLDG. 100-B TEL 916.341.7760 SACRAMENTO, CA 95816 FAX 916.341.7767	
CHECKED BY	S. ROBINSON
DESIGNED BY	T. ROPER
DRAWN BY	T. ROPER

CAUTION: THIS PLAN MAY BE REDUCED

**CITY OF OAKLAND**  
DEPARTMENT OF TRANSPORTATION  
250 FRANK H. OGAWA PLAZA, SUITE 4314  
OAKLAND, CA 94612  
(510) 238-3437  
FAX (510) 238-7227

**PLANS FOR THE CONSTRUCTION OF  
27TH STREET COMPLETE STREETS PROJECT**

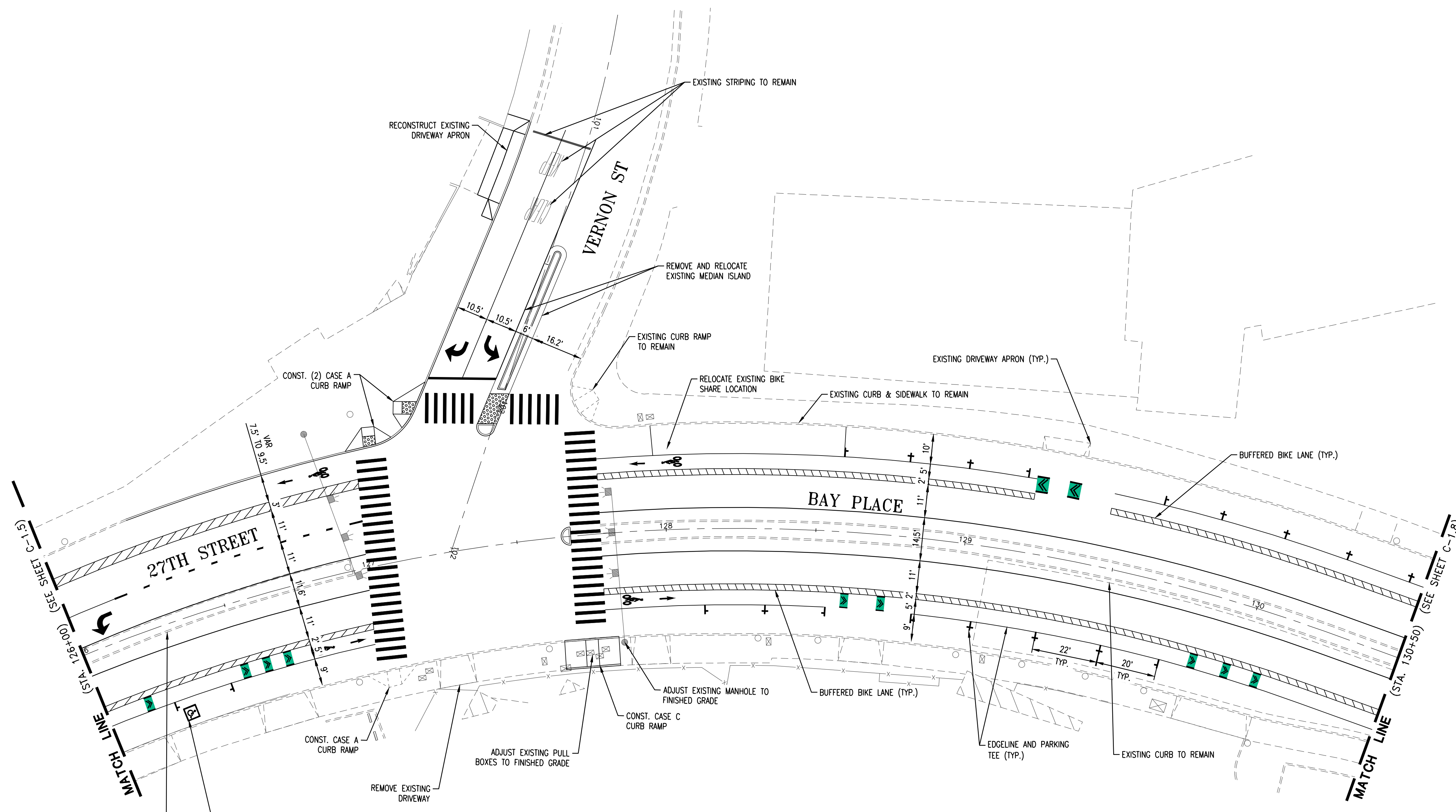
No.	DATE	BY	REFERENCE

**CONSTRUCTION PLANS:**  
  
LAYOUT PLAN  
STA 126+00 TO STA 130+50

**C1003978**  
  
SCALE: 1"=20'  
HOR: 1"=20'  
VERT: 1"=20'  
DATE: 06/2023

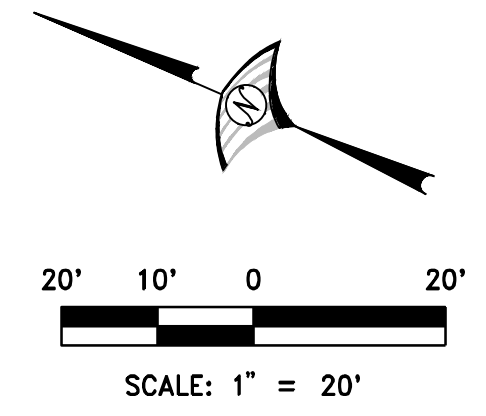
SHEET NO.  
**C-1.6**  
**17** OF **21**

DRAWING NAME: J:\Jobs\8785 Oakland Transportation On-Call\10 27th Street\Civil\Draw\02\_Sheets\C\_16\_L08-27th.dwg  
PLOT DATE: 11-22-23  
PLOTTED BY: gnsakar



- GENERAL NOTES:**
1. SEE SHEET G-1.2 FOR ROADWAY ALIGNMENT DATA.
  2. SEE TRAFFIC SHEETS FOR SIGNING AND STRIPING.
  3. SEE CURB RAMP (CR) SHEETS FOR MODIFIED CURB RAMP DETAILS.
  4. SEE BUS ISLAND (BI) SHEETS FOR BUS BOARDING ISLAND DETAILS.
  5. PROTECT ALL UTILITY FACILITIES OUTSIDE OF IMMEDIATE IMPROVEMENT AREAS. CONTRACTOR TO CONFIRM NUMBER OF UTILITY COVERS WITH RESIDENT ENGINEER BEFORE THE COMMENCEMENT OF ANY CONSTRUCTION ACTIVITY.
  6. CONTRACTOR SHALL REMOVE ALL (E) PAVEMENT STRIPING AND MARKINGS AND REMOVE AND REPLACE (E) OR INSTALL NEW SIGNAGE PER THE STRIPING AND SIGNING PLANS. ALL (E) PAVEMENT STRIPING AND MARKINGS TO BE REMOVED PRIOR TO SLURRY SEAL.
  7. CONTRACTOR SHALL REMOVE PROVIDE 12" WIDE AND 12" FULL DEPTH HMA SECTION ADJACENT TO ALL RAISED ISLAND AND CURB RAMP IMPROVEMENT.
  8. SEE GRADING SHEET FOR TC/FL ELEVATION AND POINT DATA.

- KEY NOTES:**
- ① ADJUST UTILITY FRAME AND COVER, UTILITY VAULT, VALVE BOX, STREETLIGHT, OR MONUMENT CASING TO FINISH GRADE PER APPLICABLE CITY AND STATE STANDARDS.
  - ② ADJUST FACILITY TO FINISH GRADE (BY OTHERS).
  - ③ PROTECT EX. UTILITY STRUCTURE IN PLACE.



CAUTION: THIS PLAN MAY BE REDUCED

<b>WOOD RODGERS</b> BUILDING RELATIONSHIPS ONE PROJECT AT A TIME 3301 C ST, BLDG. 100-B TEL 916.341.7760 SACRAMENTO, CA 95816 FAX 916.341.7767	
CHECKED BY	S. ROBINSON
DESIGNED BY	T. ROPER
DRAWN BY	T. ROPER

**CITY OF OAKLAND**  
DEPARTMENT OF TRANSPORTATION  
250 FRANK H. OGAWA PLAZA, SUITE 4314  
OAKLAND, CA 94612  
(510) 238-3437  
FAX (510) 238-7227

**PLANS FOR THE CONSTRUCTION OF  
27TH STREET COMPLETE STREETS PROJECT**

No.	DATE	BY	REFERENCE

**CONSTRUCTION PLANS:**  
  
LAYOUT PLAN  
STA 130+50 TO STA 134+50

**C1003978**  
  
SCALE: 1"=20'  
SHEET NO. C-1.7  
18 OF 21  
DATE: 06/2023

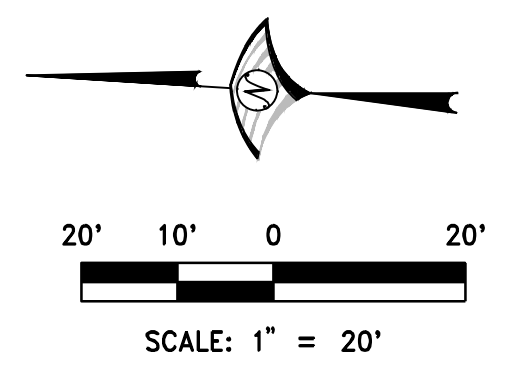
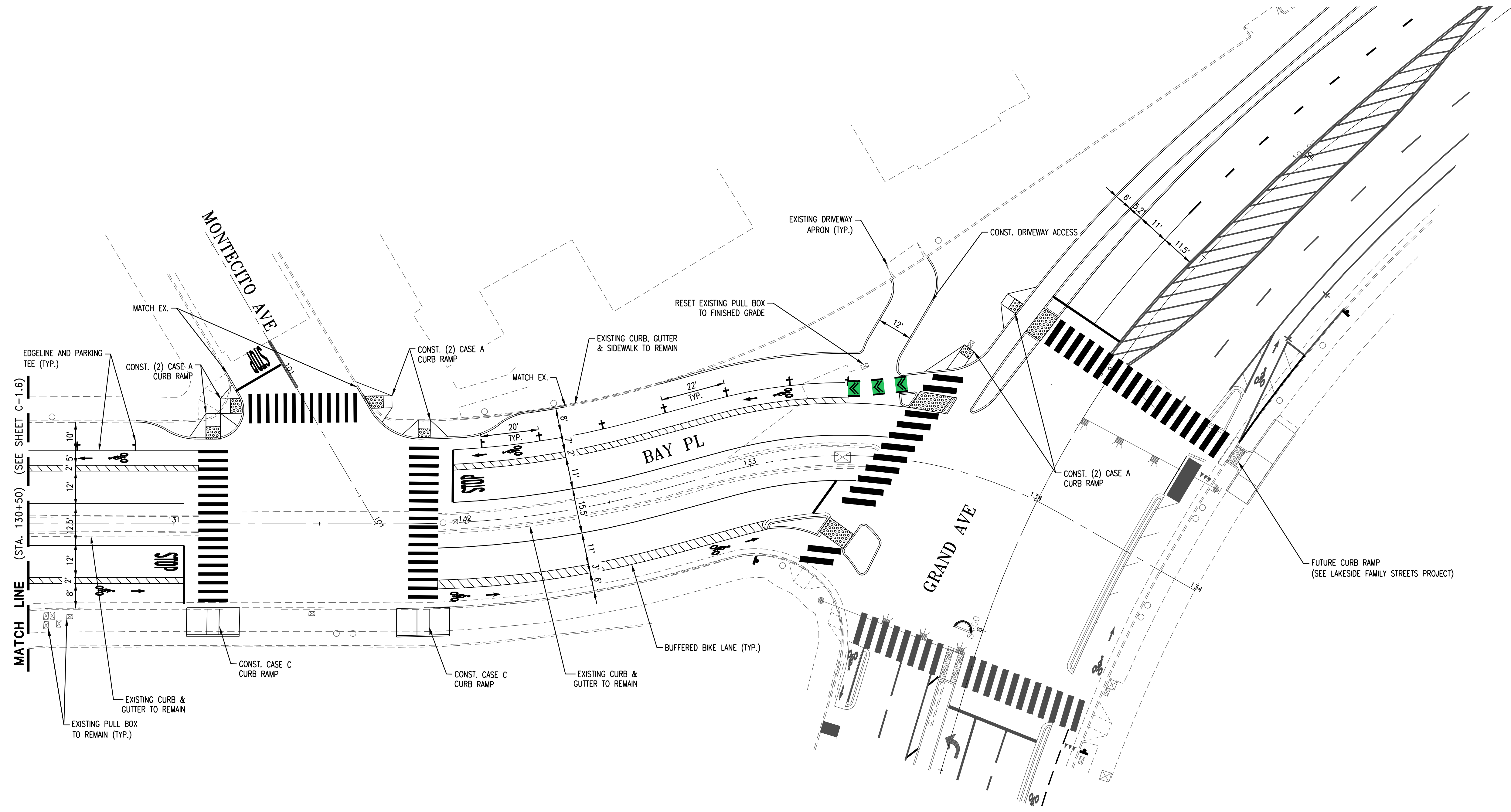
DRAWING NAME: J:\Jobs\8785 Oakland Transportation On-Call\10 & 27th Street\Civil\Draw\02\_Sheets\C\_17-L07-27th.dwg  
PLOT DATE: 11-22-23  
PLOTTED BY: gnsbar

**GENERAL NOTES:**

1. SEE SHEET G-1.2 FOR ROADWAY ALIGNMENT DATA.
2. SEE TRAFFIC SHEETS FOR SIGNING AND STRIPING.
3. SEE CURB RAMP (CR) SHEETS FOR MODIFIED CURB RAMP DETAILS.
4. SEE BUS ISLAND (BI) SHEETS FOR BUS BOARDING ISLAND DETAILS.
5. PROTECT ALL UTILITY FACILITIES OUTSIDE OF IMMEDIATE IMPROVEMENT AREAS; CONTRACTOR TO CONFIRM NUMBER OF UTILITY COVERS WITH RESIDENT ENGINEER BEFORE THE COMMENCEMENT OF ANY CONSTRUCTION ACTIVITY.
6. CONTRACTOR SHALL REMOVE ALL (E) PAVEMENT STRIPING AND MARKINGS AND REMOVE AND REPLACE (E) OR INSTALL NEW SIGNAGE PER THE STRIPING AND SIGNING PLANS. ALL (E) PAVEMENT STRIPING AND MARKINGS TO BE REMOVED PRIOR TO SLURRY SEAL.
7. CONTRACTOR SHALL REMOVE PROVIDE 12" WIDE AND 12" FULL DEPTH HMA SECTION ADJACENT TO ALL RAISED ISLAND AND CURB RAMP IMPROVEMENT.
8. SEE GRADING SHEET FOR TC/FL ELEVATION AND POINT DATA.

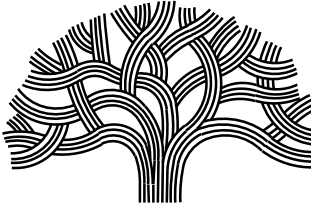
**KEY NOTES:**

- ① ADJUST UTILITY FRAME AND COVER, UTILITY VAULT, VALVE BOX, STREETLIGHT, OR MONUMENT CASING TO FINISH GRADE PER APPLICABLE CITY AND STATE STANDARDS.
- ② ADJUST FACILITY TO FINISH GRADE (BY OTHERS).
- ③ PROTECT EX. UTILITY STRUCTURE IN PLACE.



<b>WOOD RODGERS</b> BUILDING RELATIONSHIPS ONE PROJECT AT A TIME 3301 C ST, BLDG. 100-B TEL 916.341.7760 SACRAMENTO, CA 95816 FAX 916.341.7767	
CHECKED BY	S. ROBINSON
DESIGNED BY	T. ROPER
DRAWN BY	T. ROPER

CAUTION: THIS PLAN MAY BE REDUCED



**CITY OF OAKLAND**  
DEPARTMENT OF TRANSPORTATION  
250 FRANK H. OGAWA PLAZA, SUITE 4314  
OAKLAND, CA 94612  
(510) 238-3437  
FAX (510) 238-7227

**PLANS FOR THE CONSTRUCTION OF  
27TH STREET COMPLETE STREETS PROJECT**

No.	DATE	BY	REFERENCE

**CONSTRUCTION PLANS:**

LAYOUT PLAN  
STREET NAME

**C1003978**

SCALE:	1"=20'
HOR:	
VERT:	
DATE:	06/2023

SHEET NO.	C-1.8
19	OF 21

DRAWING NAME: C:\Users\Public\Temp\Asp\Publin\_19039\_C\_17408-27th.dwg  
PLOT DATE: 11-22-23  
PLOT BY: troper