

OAKLAND 2045 GENERAL PLAN UPDATE

PRESENTATION TO PARKS AND RECREATION ADVISORY COMMISSION (PRAC)



PLANNING & BUILDING DEPARTMENT

February 9, 2022

AGENDA

- General Plan Overview
- Guiding Principles
- Project Team and Roles
- Schedule and Phasing
- Phase I Overview
- Community Engagement



PURPOSE AND NEED OF THE GENERAL PLAN

- The City of Oakland is required to adopt (and update) a General Plan pursuant to Section 65300 of the California Government Code.
- Many portions of Oakland's General Plan were adopted over 23 years ago.



WHAT IS A GENERAL PLAN?



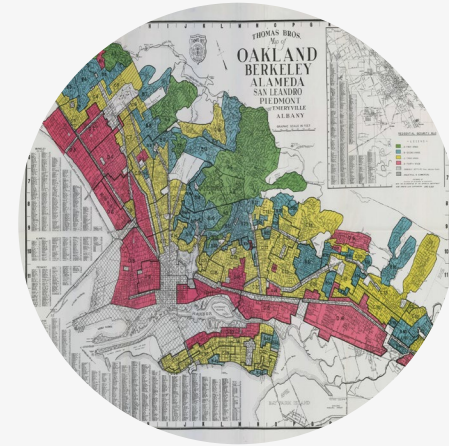
"Constitution" for development and conservation.

Establishes citywide vision and supporting goals, policies, and implementation measures.



Opportunity to look back to identify past challenges and accomplishments.

Provides consistent direction for future development.



Opportunity to Reduce Racial Inequities & Promote Inclusive Engagement

Engage our community in the planning and decision-making process.

HOW DOES THE GENERAL PLAN IMPACT OAKLAND?



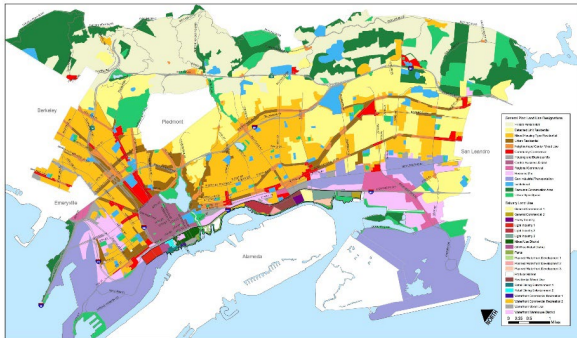
Location and types of housing



Number and quality of parks and recreational spaces



Protect and enhance cultural & natural resources



General Plan Designations
CITY OF OAKLAND
Community and Economic Development Agency
April 2011

Regulates built environment (Zoning)



Number and types of jobs



How people get around

State law requires
specific topics
(elements) to be
covered in
a General Plan.



TO BE UPDATED BY **EARLY 2023**



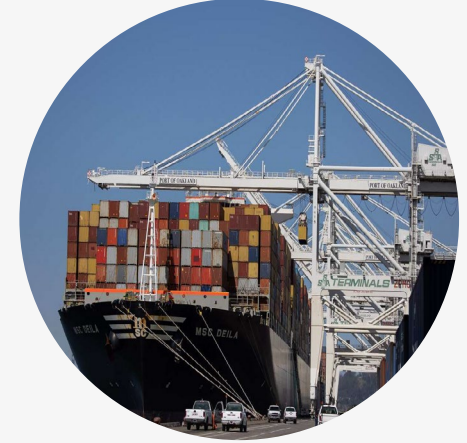
HOUSING
(Adopted
2014)
*Required by
State Law*



SAFETY
(Adopted
2004 - Last
Amended
2021)
*Required by
State Law*



**ENVIRONMENTAL
JUSTICE**
New Requirement
Stand-Alone or
Integrated
Required by State Law



**INDUSTRIAL
LANDS
POLICY**
New
NOT Required by
State Law

OTHER REQUIRED ELEMENTS



**OPEN SPACE,
CONSERVATION
& RECREATION
(OSCAR)**
Adopted 1996



NOISE
Adopted 2005



**LAND USE
& TRANSPORTATION**
Adopted 1998
*Includes Estuary Policy Plan for
areas below **Interstate 880**
(Adopted 1999)*

State law also requires
gives cities the option
to include any other
topic as an Element.



OPTIONAL ELEMENTS



INFRASTRUCTURE AND FACILITIES

New

Overarching goals and policies for city infrastructure and capital improvements over the long term.



HISTORIC PRESERVATION

Adopted 1994
Amended 1998



SCENIC HIGHWAYS

Adopted 1974

The General Plan Update serves as an opportunity to advance the City's critically important mission to **“intentionally integrate, on a citywide basis, the principle of 'fair and just' in all the city does in order to achieve equitable opportunities for all people and communities.”**

(Oakland Municipal Code 2.29.170.1)

This means working to eliminate the root causes of inequity, resulting in more effective and equitable City policies, processes and services.



BUILD FROM PREVIOUS AND ONGOING WORK



■ National Tools

- Environmental Justice Principles (1991)
- Executive Order 12898

■ Tools from the Department of Race & Equity:

- Race & Equity Impact Analysis
- Inclusive Community Engagement Guide

■ Leverage Internal Capacity:

- Race & Equity Teams in City Departments
- Interdepartmental Community Engagement staff

■ Local Models We've Learned from:

- Healthy Development Guidelines (2017)
- East Oakland Neighborhood Initiative (2019)
- West Oakland Community Action Plan (2019)
- 2030 Equitable Climate Action Plan (2020)
- Capital Improvement Program (2021)

GUIDING PRINCIPLES

Equity and
Environmental
Justice

Transparency,
Relevance &
Clarity

Focused yet
Flexible &
Adaptable Process

Strategic & Long-
Range Thinking

Inter-Agency &
Inter-
Departmental
Coordination

Important Role of
Community Based
Organizations
(CBO)

Youth Engagement

Place-Based
Approach

RACIAL EQUITY IMPACT ASSESSMENT: A PROCESS AND A PRODUCT

1. Identifying stakeholders
2. Engaging stakeholders
3. Identifying and documenting racial inequities
4. Examining the causes
5. Clarifying the purpose
6. Considering equitable impacts
7. Advancing equitable impacts
8. Examining alternatives for improvements
9. Ensuring viability and sustainability
10. Identifying success indicators

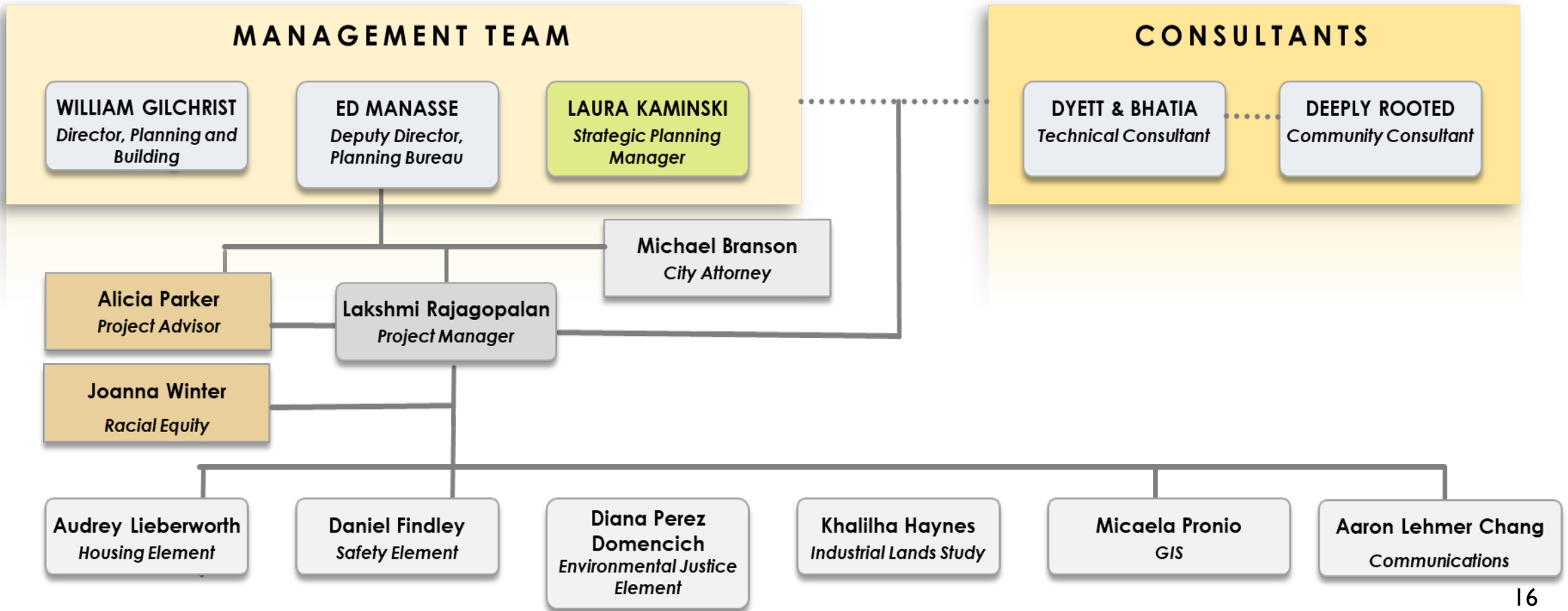
(Credit to Department of Race and Equity and Race Forward)

INCLUSIVE COMMUNITY ENGAGEMENT – ROLE OF COMMUNITY BASED ORGANIZATIONS



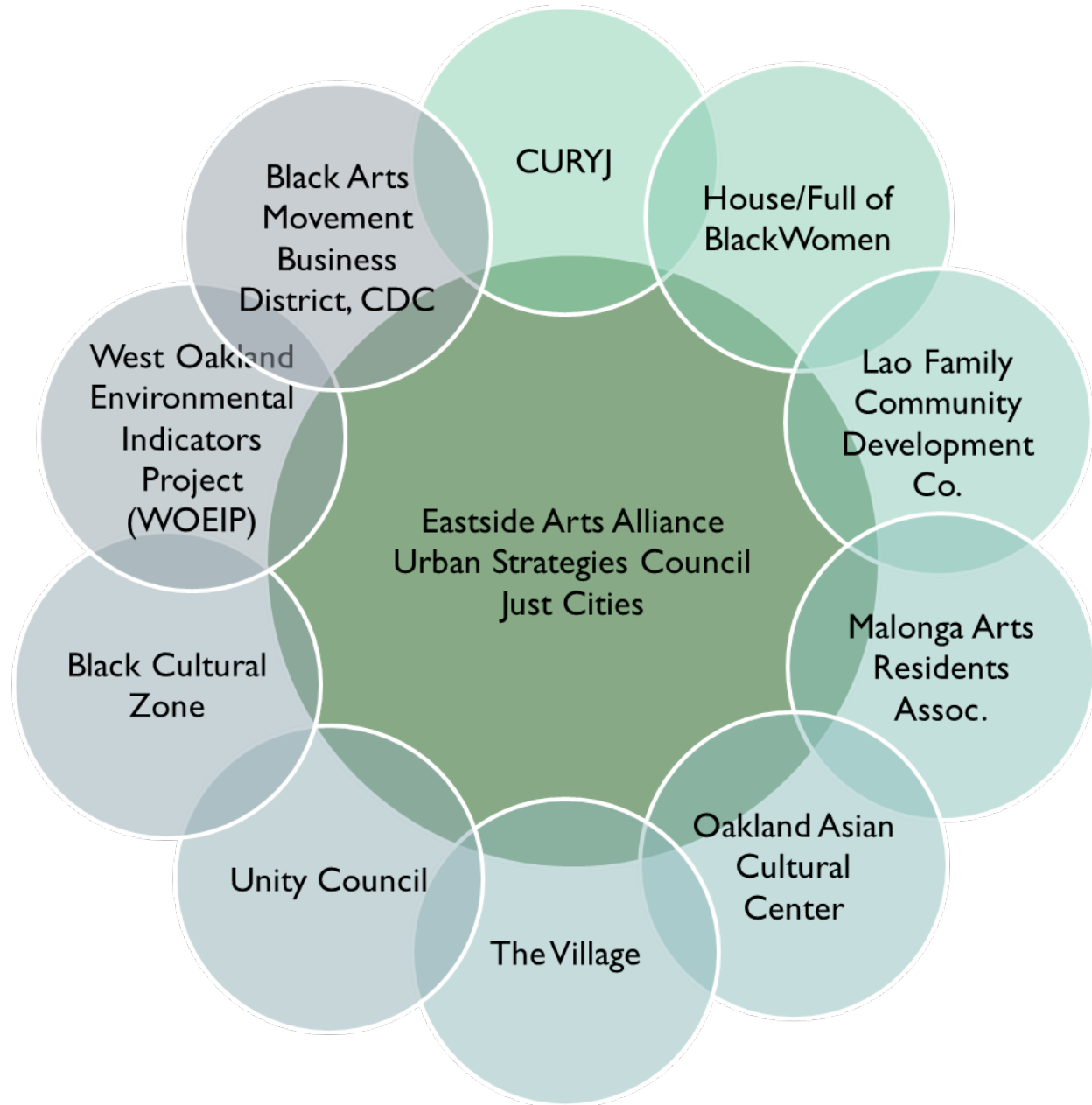
- 3 CBOs will serve as the Community Consultant. They will be a “backbone” organization for partnering with other community-based groups.
- Lead the community engagement process, founded on a comprehensive, equity-driven public engagement approach, which will support identification of key issues, development of an overarching vision and guiding principles, and input into the Elements.
- Provide targeted engagement to geographies and communities that experience socio-economic, environmental, and racial disparities.

PROJECT TEAM



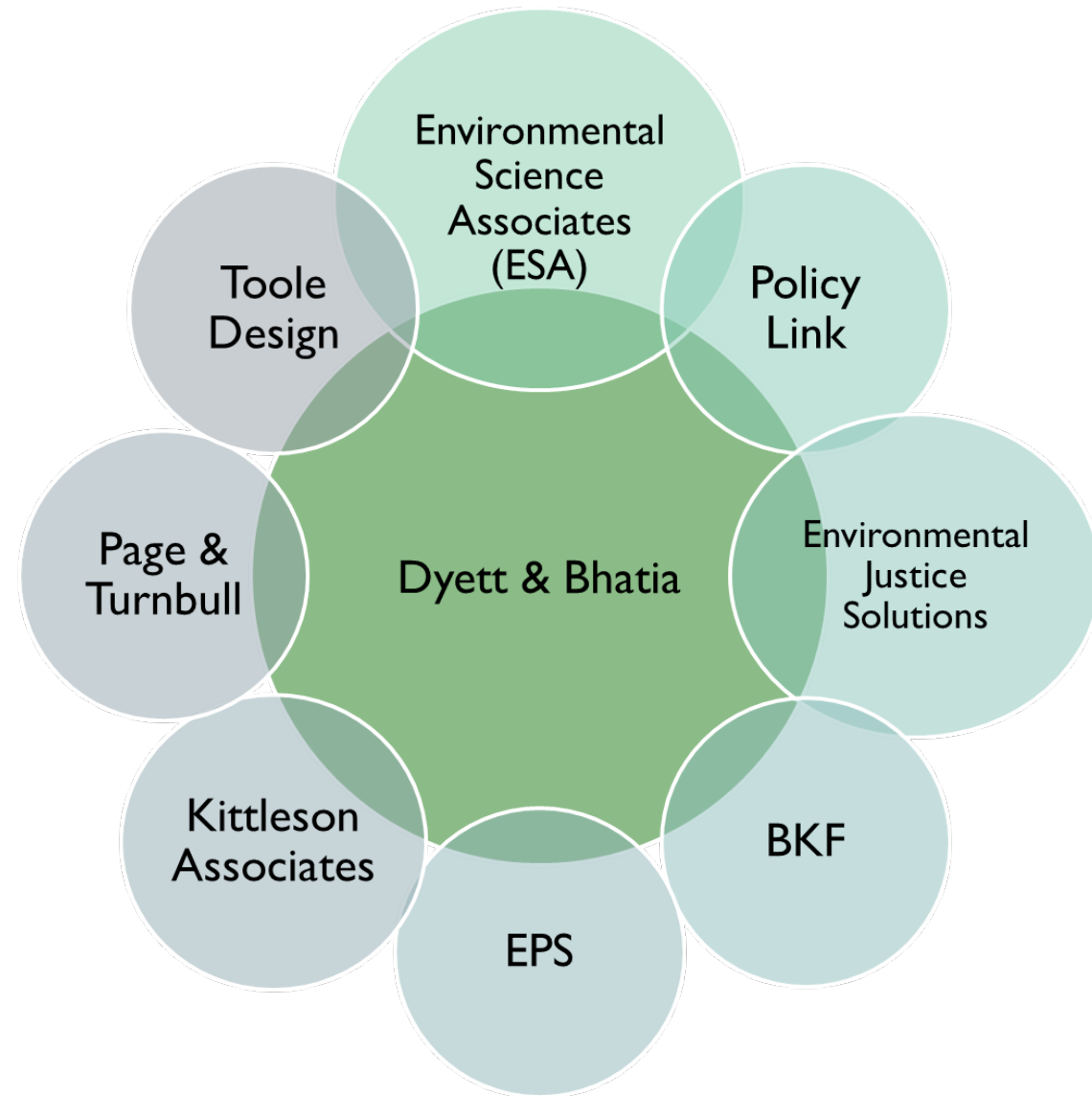
COMMUNITY CONSULTANT

- Convene Equity Working Group.
- Work with local CBOs & artists to create pop-ups & engagement spaces and activities at cultural events throughout the City.
- Ensure outreach is multi-lingual and reduces other potential barriers to participation.



TECHNICAL CONSULTANT

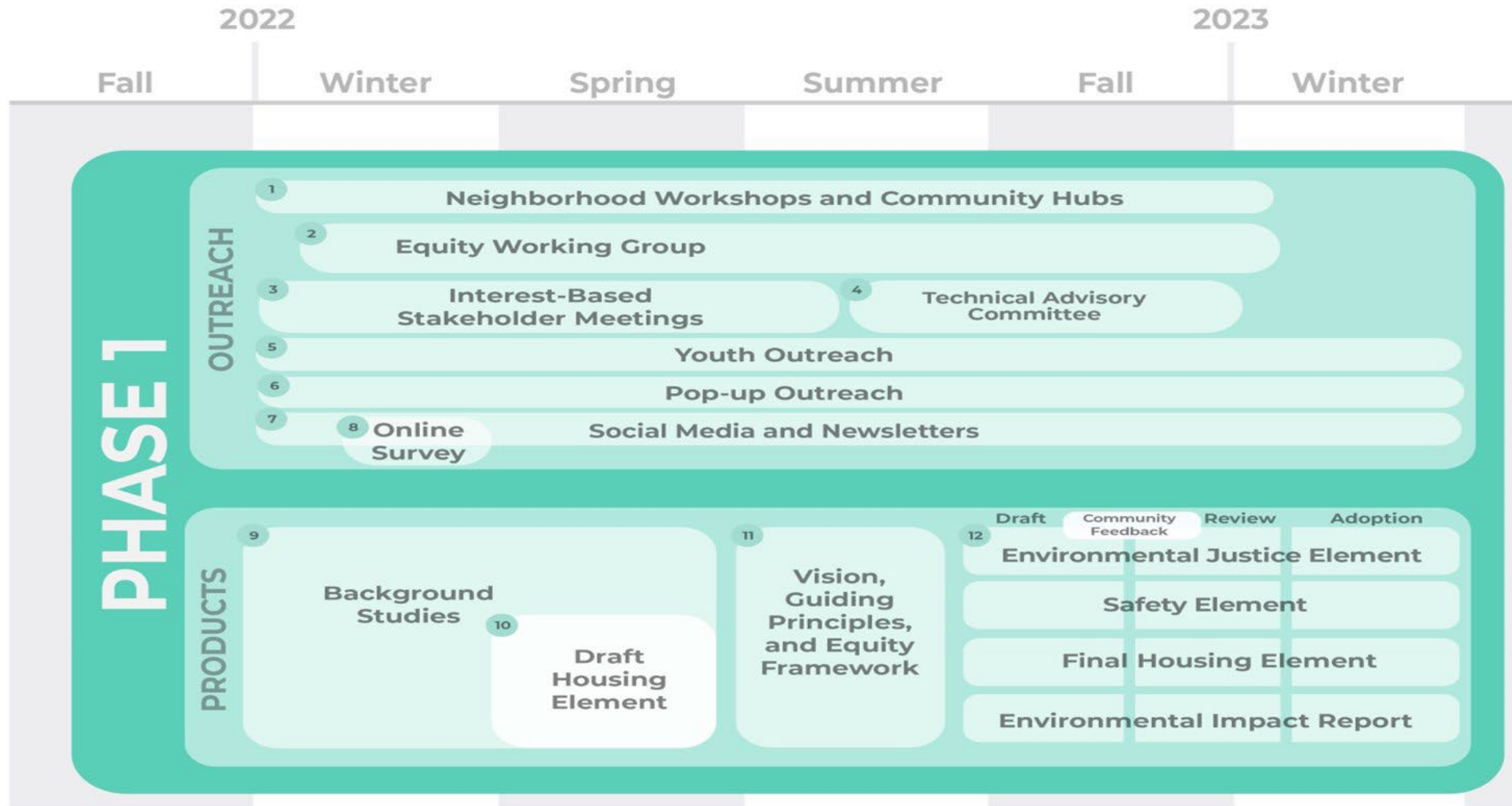
- Update five General Plan Elements and create two new Elements.
- Create two Environmental Impact Reports (EIR).
- Create two Racial Equity Impact Analyses (REIA).
- Zoning Code and Map updates.



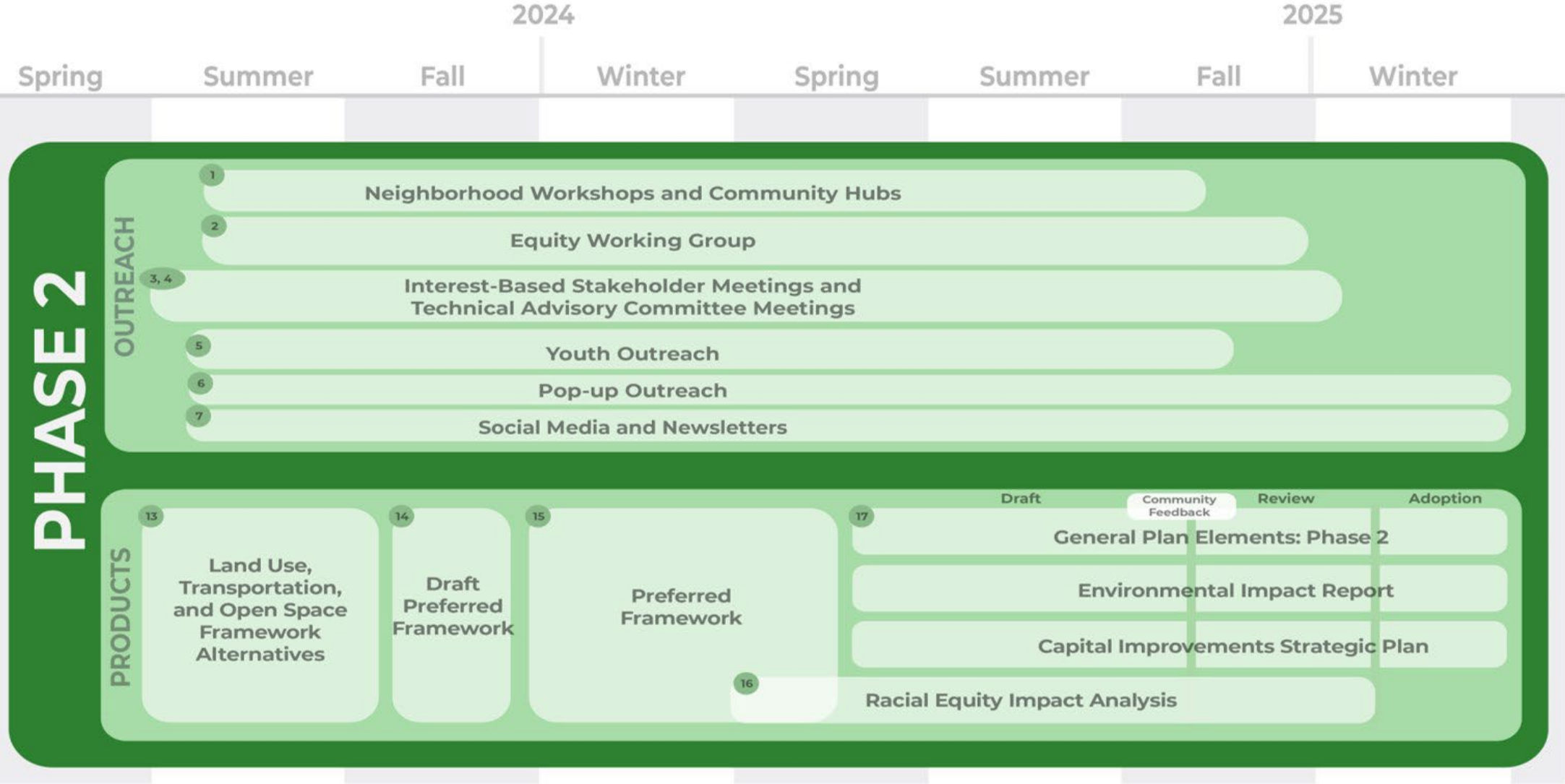
The General Plan
Update will happen in
two phases



PHASE I SCHEDULE

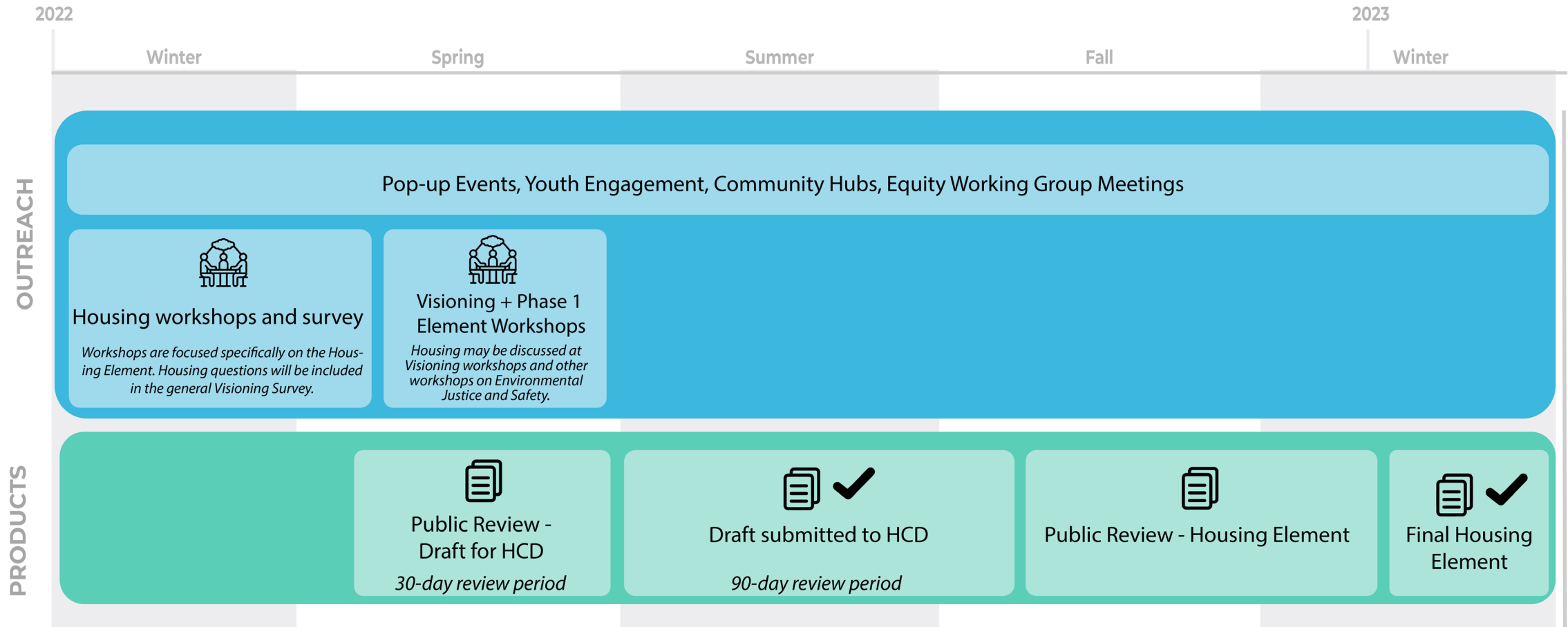


PHASE 2 SCHEDULE



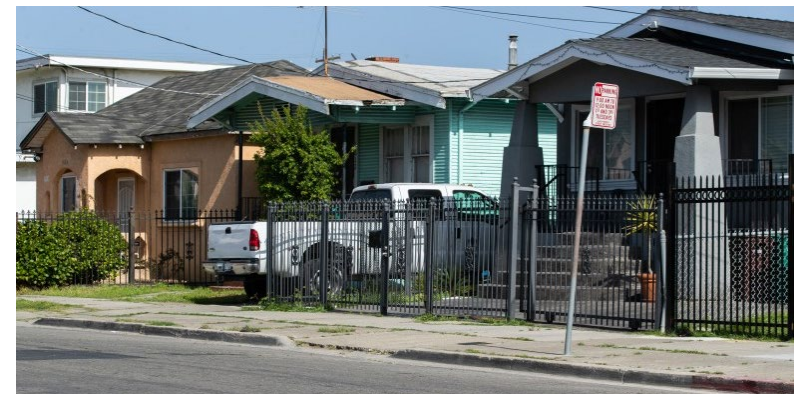
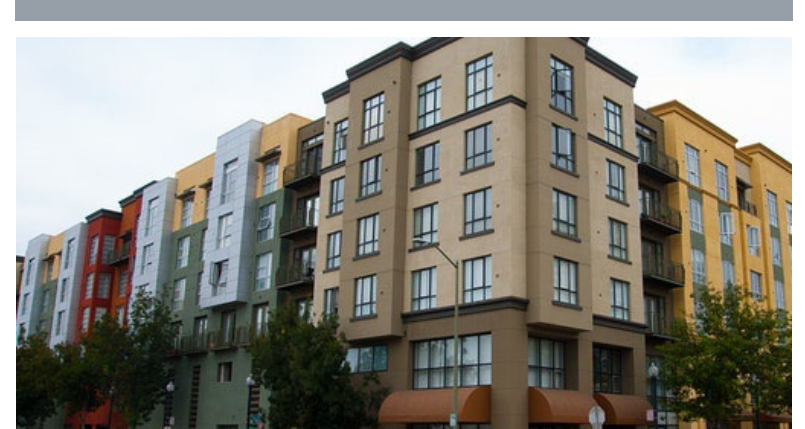
OAKLAND2045

Housing Element Timeline



HOUSING ELEMENT

- City's blueprint for housing the City's residents, at all economic levels including low income and households with special needs.
- Subject to state approval
- Covers 8 years (2023-2031)
- Must accommodate forecasted need
 - Regional Housing Need Allocation (RHNA) of 26,000 units
- More equitable distribution of housing within Oakland
- Assembly Bill 686 adds a fair and equitable housing requirement
- Plan for affordable housing in high resource areas





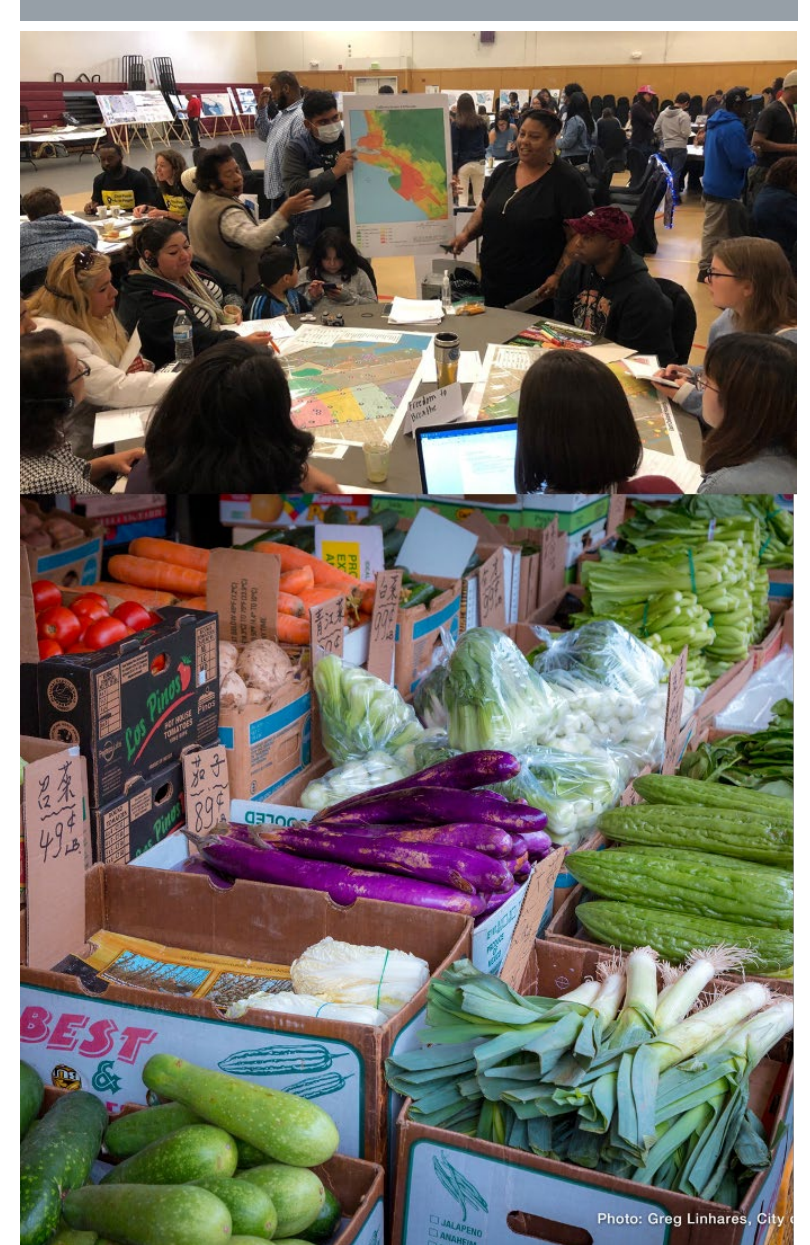
SAFETY ELEMENT

- Identifies safety issues - environmental and man-made in Oakland and focuses on protecting the community.
- Establishes the General Plan policies to minimize risk, reduce exposure, protect people, property, and the environment from environmental hazards in Oakland
- **Safety Element to incorporate Local Hazard Mitigation Plan (LHMP)**
- Adopted LHMP, SB379, and Climate Change
- Will include a climate change vulnerability assessment and will focus on new and increased hazards and risks in the city, including wildfire and sea level rise

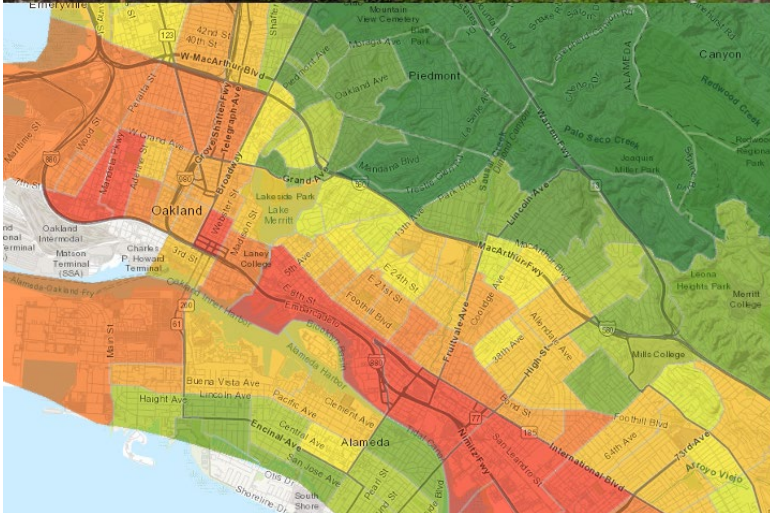
ENVIRONMENTAL JUSTICE ELEMENT

- Environmental Justice (EJ) Element Required by Senate Bill (SB) 1000
- Reduce the unique or compounded health risks in Environmental Justice* Communities by decreasing pollution exposure, increasing community assets, and improving overall health.
- Identify Environmental Justice Communities
- Goals and Policies
 - Pollution Exposure, Public Facilities, Food Access, Safe and Sanitary Homes, Physical Activity
 - Promote community engagement in the public decision-making process.
 - Prioritize improvements and programs for addressing the needs of frontline/EJ communities.

* Defined as “Disadvantaged Communities” in Senate Bill (SB) 1000



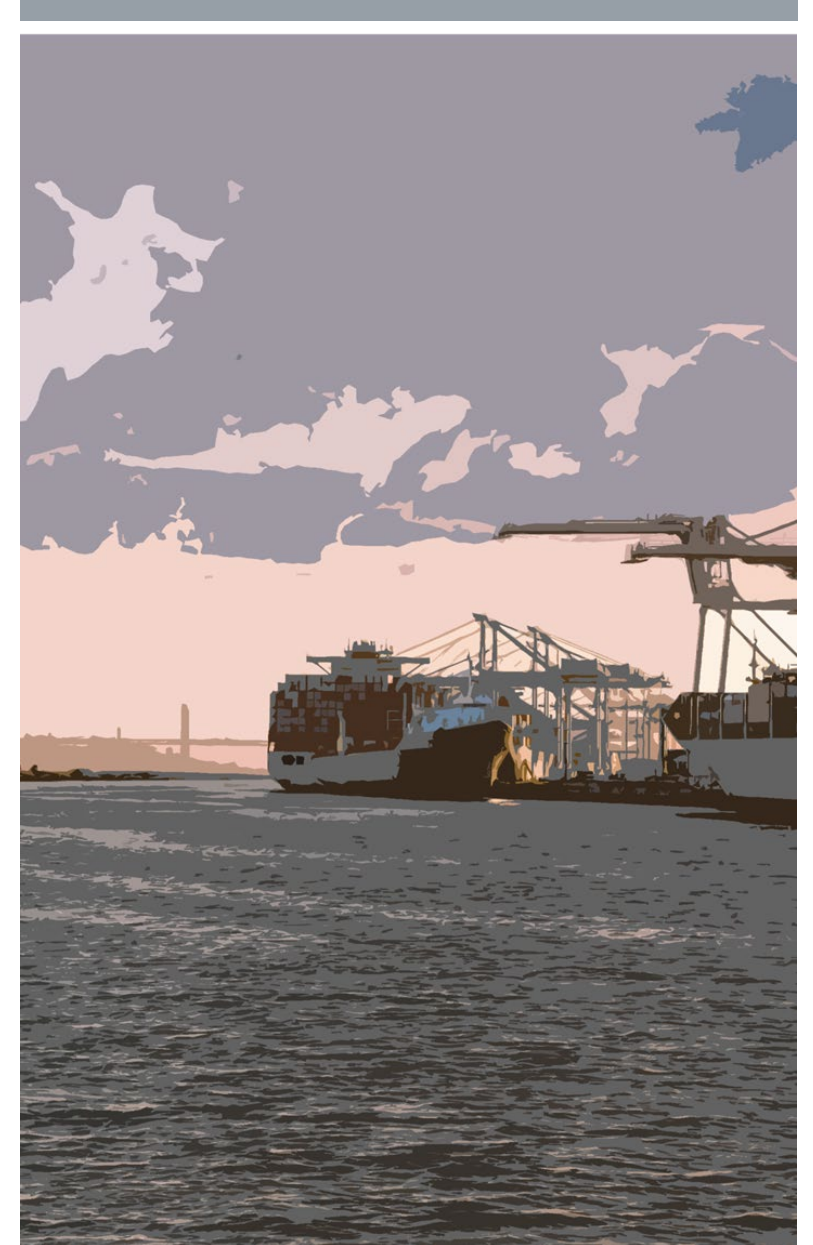
HOW WILL ENVIRONMENTAL JUSTICE COMMUNITIES BE DEFINED?



- A Close Look at Senate Bill (SB) 1000:
 - An area identified by the California Environmental Protection Agency (CalEPA): The 25 percent of highest scoring census tracts in CalEPA's **Communities Environmental Health Screening Tool** (CalEnviroScreen); Or
 - An area that is a **low-income area** that is **disproportionately** impacted by environmental pollution and other hazards that can lead to **negative health effects**, exposure, or environmental degradation.
- Process and Outcome
 - An **Environment Justice Communities Map** that supplements CalEnviroScreen 4.0 with **local data** and **community knowledge** to identify additional low-income areas that are disproportionately impacted by environmental pollution and health inequity.

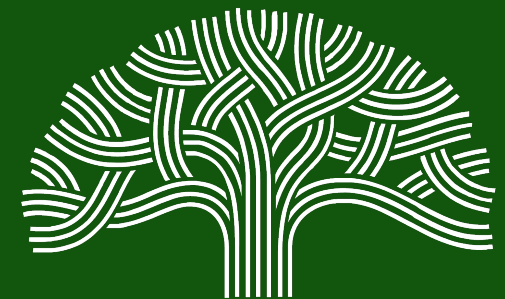
INDUSTRIAL LANDS POLICY

- Identify the most suitable sites for heavy industry accounting for livability and proximity to “sensitive uses.”
- Support established industrial businesses that have strong labor forces benefitting local residents with using cleaner technology.
- Identify new industrial sectors the City should support that would create job-dense businesses with little environmental impacts.
- Use zoning and land use tools to achieve equitable outcomes:
 - Improve health and reduce pollution in impacted communities
 - Eliminate racial disparities in air pollution and job access
 - Engage industrial businesses and impacted communities in solution finding



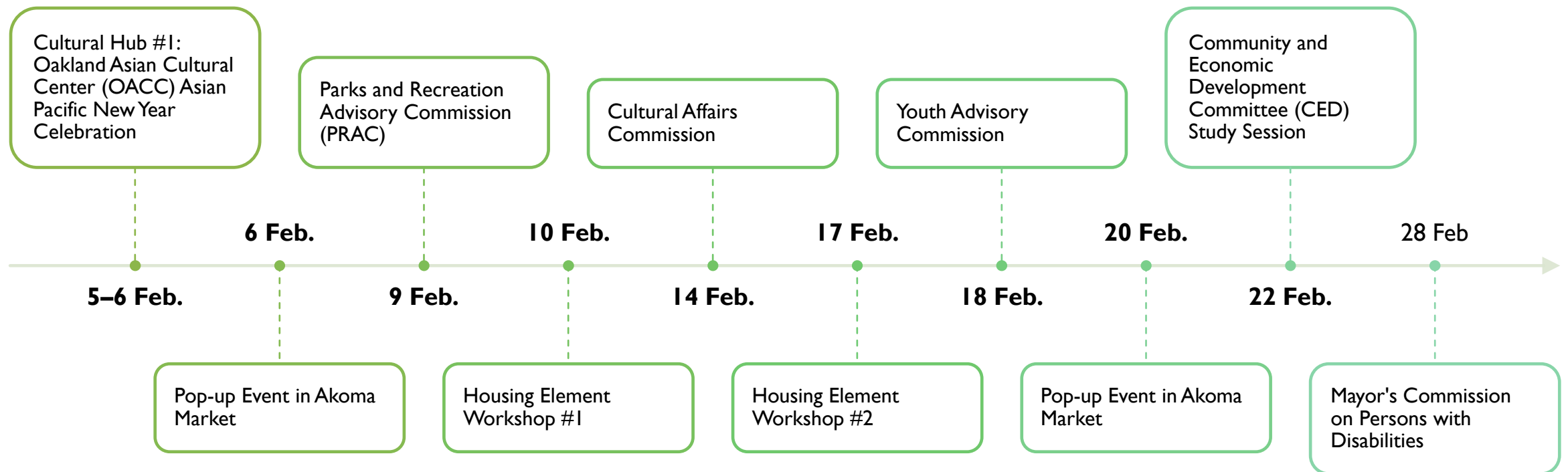


COMMUNITY ENGAGEMENT



OAKLAND 2045
GENERAL PLAN

CALENDAR OF EVENTS – FEBRUARY 2022



**FOR EVENT DETAILS
VISIT OUR WEBSITE:
[BIT.LY/OAKLANDGPU](https://bit.ly/OaklandGPU)**



VISIT THE GENERAL PLAN UPDATE WEBSITE FOR
MORE INFORMATION AND TO SIGN-UP FOR
REGULAR UPDATES:

[WWW.OAKLANDCA.GOV/TOPICS/GENERAL-
PLAN-UPDATE](http://WWW.OAKLANDCA.GOV/TOPICS/GENERAL-PLAN-UPDATE)