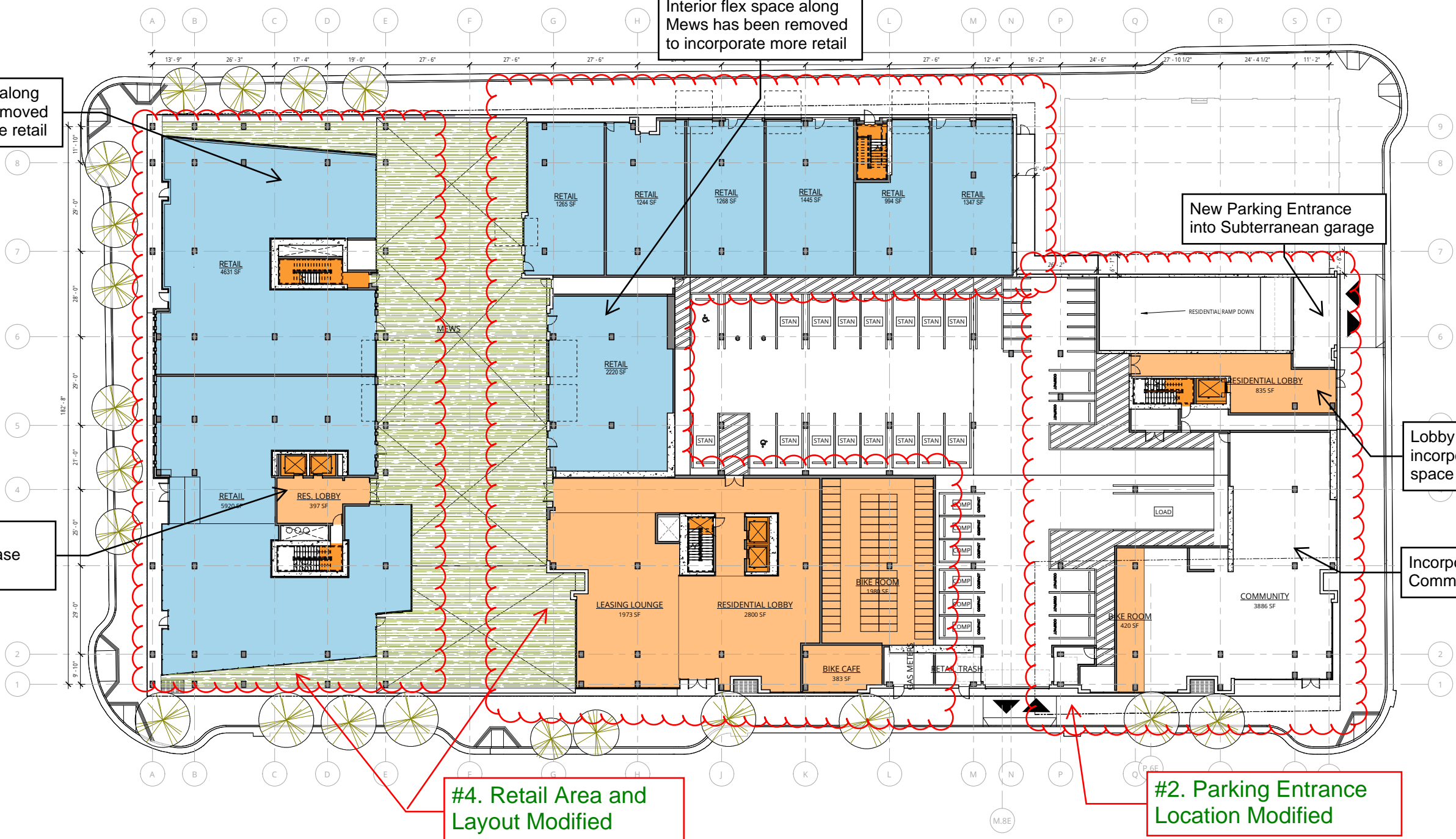


**Attachment A1:
Clouded Site Plans**

8/22/2016 5:57:55 PM
C:\Revit\Projects\MacArthur Station - Parcel A1\42010-15-MacArthur Station-Parcel A_sheets.rvt



1 PARCEL A LEVEL 1
A.2.01 | 1/16" = 1'-0"

Ankrom Moisan
6720 SW MACADAM AVENUE, SUITE 100
PORTLAND, OR 97219
T 503.245.7100
117 SOUTH MAIN STREET, SUITE 400
SEATTLE, WA 98104
T 206.576.1600
© ANKROM MOISAN ARCHITECTS, INC.

TIPPING MAR
STRUCTURAL
1906 SHATTUCK AVE
BERKELEY, CA 94704
T 510.549.1906

SANDIS
CIVIL
636 9TH ST
OAKLAND, CA 94607
T 510.590.3415

MILLER COMPANY LANDSCAPE
LANDSCAPE
1585 FOLSOM ST
SAN FRANCISCO, CA 94103
T 415.252.7288

MACARTHUR STATION PARCEL A
40TH STREET AND TELEGRAPH AVENUE, OAKLAND, CA
BRIDGE HOUSING

PARCEL A GROUND LEVEL

HINES DEVELOPMENT SET

DATE	REVISION
04.20.2016	

PROJECT NUMBER	SHEET NUMBER
142010	A 2.01

SCALE 1/16" = 1'-0"


4/9/2015 10:24:12 AM

C:\Revit\Projects\MacArthur Station - FPP - 142010-15\MacArthur Station\FDP_Site_A_SitePlan.rvt



1 LEVEL 1 OVERVIEW
A 1.00 | 1" = 30'-0"



 Ankrom Moisan	
6720 SW MACADAM AVENUE, SUITE 100 PORTLAND, OR 97219 T 503.245.7100 117 SOUTH MAIN STREET, SUITE 400 SEATTLE, WA 98104 T 206.576.1600 © ANKROM MOISAN ARCHITECTS, INC.	
TIPPING MAR STRUCTURAL 1906 SHATTUCK AVE BERKELEY, CA 94704 T 510.549.1906	
SANDIS CIVIL 635 9TH ST OAKLAND, CA 94607 T 510.590.3415	
MILLER COMPANY LANDSCAPE LANDSCAPE 1585 FOLSOM ST SAN FRANCISCO, CA 94103 T 415.252.7288	
MACARTHUR STATION BLOCKS A & C1 40TH AND TELEGRAPH OAKLAND, CA BRIDGE HOUSING	
OVERVIEW PARCELS A & C1	
FINAL DEVELOPMENT PACKAGE	
DATE 04.09.2015	REVISION
PROJECT NUMBER 142010	SHEET NUMBER A 1.00
SCALE 1" = 30'-0"	

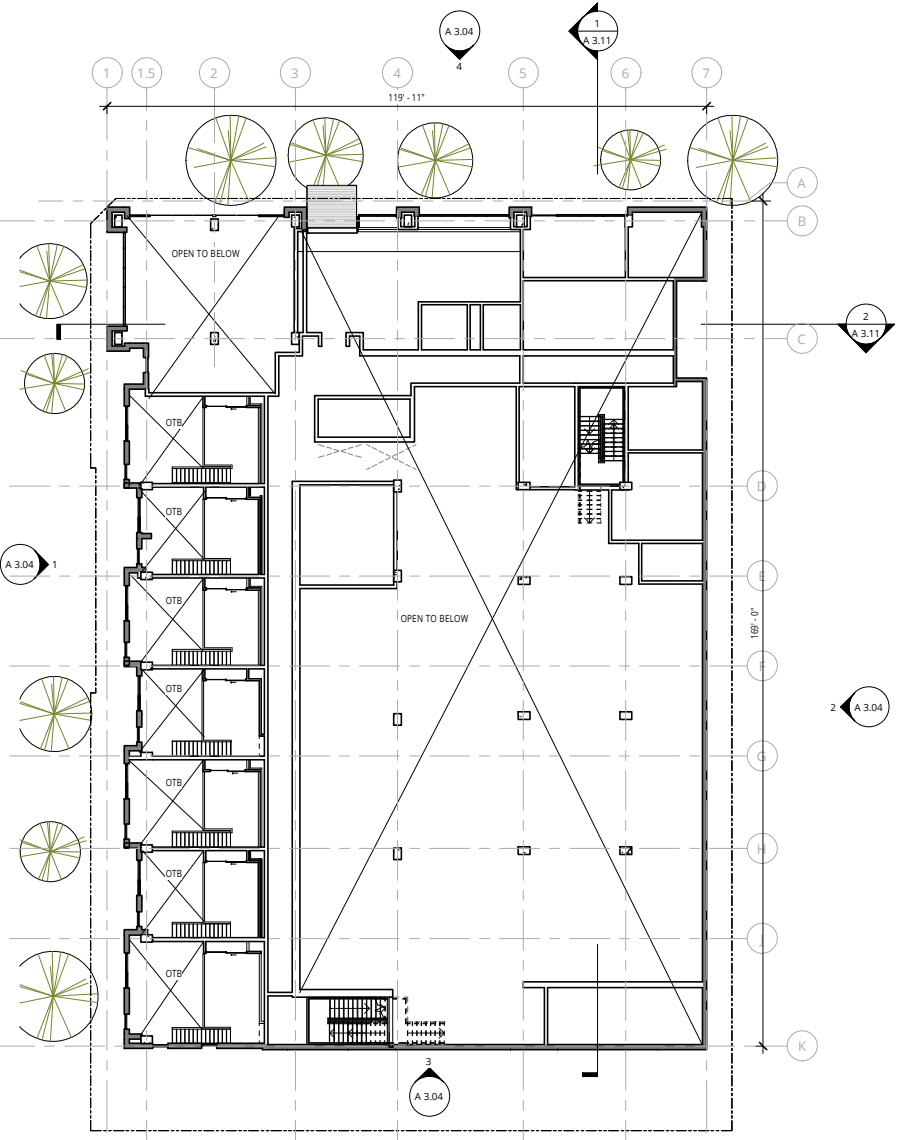
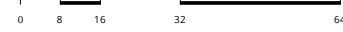
4/9/2015 10:24:50 AM

C:\Revit\Projects\MacArthur Station - FDP - 361142010-15\MacArthur Station\FDP_Sht-A_SitePlan.rvt



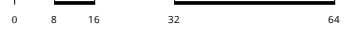
1 PARCEL C1 LEVEL 1

A 2.20 | 1/16" = 1'-0"

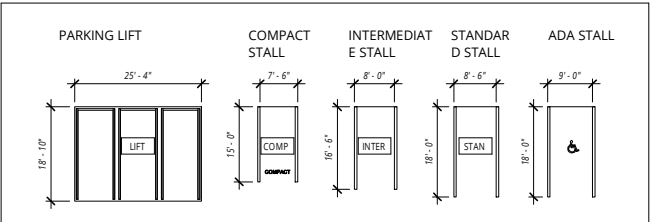


2 BLOCK C1 LOFT LEVEL

A 2.20 | 1/16" = 1'-0"



PARKING LEGEND



No Changes to Site Plan from FDP



6720 SW MACADAM AVENUE, SUITE 100
 PORTLAND, OR 97219
 T 503.245.7100

117 SOUTH MAIN STREET, SUITE 400
 SEATTLE, WA 98104
 T 206.576.1600

© ANKROM MOISAN ARCHITECTS, INC.

TIPPING MAR

STRUCTURAL
 1906 SHATTUCK AVE
 BERKELEY, CA 94704
 T 510.549.1906

SANDIS

CIVIL
 636 9TH ST
 OAKLAND, CA 94607
 T 510.590.3415

MILLER COMPANY LANDSCAPE

LANDSCAPE
 1585 FOLSOM ST
 SAN FRANCISCO, CA 94103
 T 415.252.7288

MACARTHUR STATION BLOCKS A & C1
40TH AND TELEGRAPH OAKLAND, CA

BRIDGE HOUSING

PARCEL C1 GROUND & MEZZANINE LEVELS

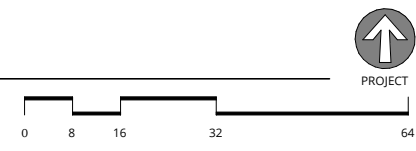
FINAL DEVELOPMENT PACKAGE

DATE 04.09.2015	REVISION
PROJECT NUMBER 142010	SHEET NUMBER
SCALE 1/16" = 1'-0"	A 2.20

4/20/2016 5:19:36 PM
C:\Revit\Projects\MacArthur Station - Parcel C\1142010-15-MacArthur Station-Parcel C1_sarah.rvt



1 PARCEL C LEVEL 1
A 2.20 | 1/16" = 1'-0"



6720 SW MACADAM AVENUE, SUITE 100
PORTLAND, OR 97219
T 503.245.7100

117 SOUTH MAIN STREET, SUITE 400
SEATTLE, WA 98104
T 206.576.1600

© ANKROM MOISAN ARCHITECTS, INC.

STRUCTURAL CONSULTANT NAME

STRUCTURAL
7434 E McDONALD DR
SCOTTSDALE, AZ 85250
T 480.922.8854

CIVIL CONSULTANT NAME

CIVIL
3561 E SUNRISE DR, SUITE 225
TUCSON, AZ 85718
T 520.318.1950

MACARTHUR STATION - BLOCK C1
39TH STREET AND TELEGRAPH AVENUE, OAKLAND, CA

BRIDGE HOUSING

REVISION	DATE	REASON FOR ISSUE

PARCEL C1
GROUND & MEZZ

HINES
DEVELOPMENT SET

DATE 04.20.2016	REVISION
PROJECT NUMBER 142010	SHEET NUMBER A 2.20
SCALE 1/16" = 1'-0"	